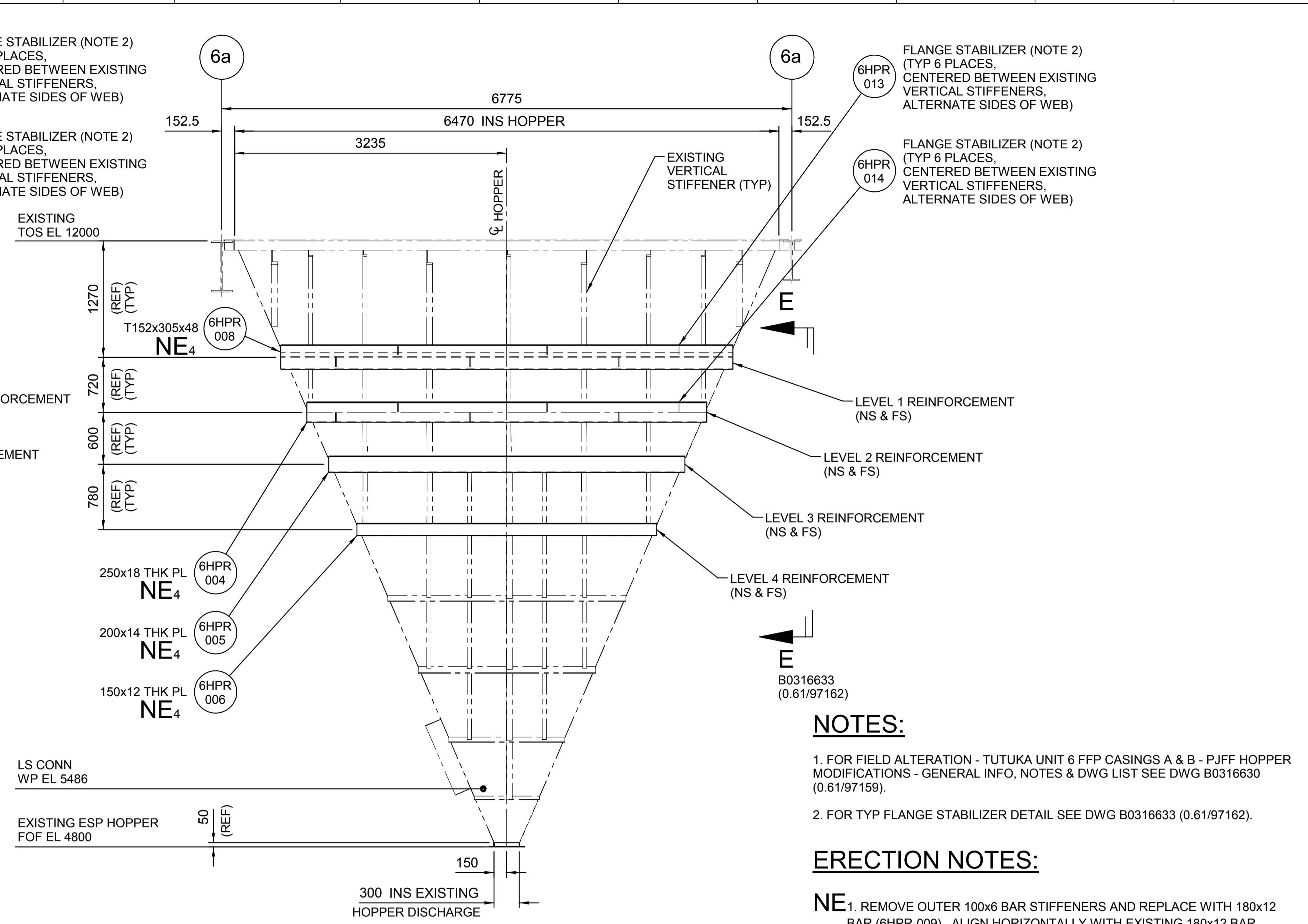
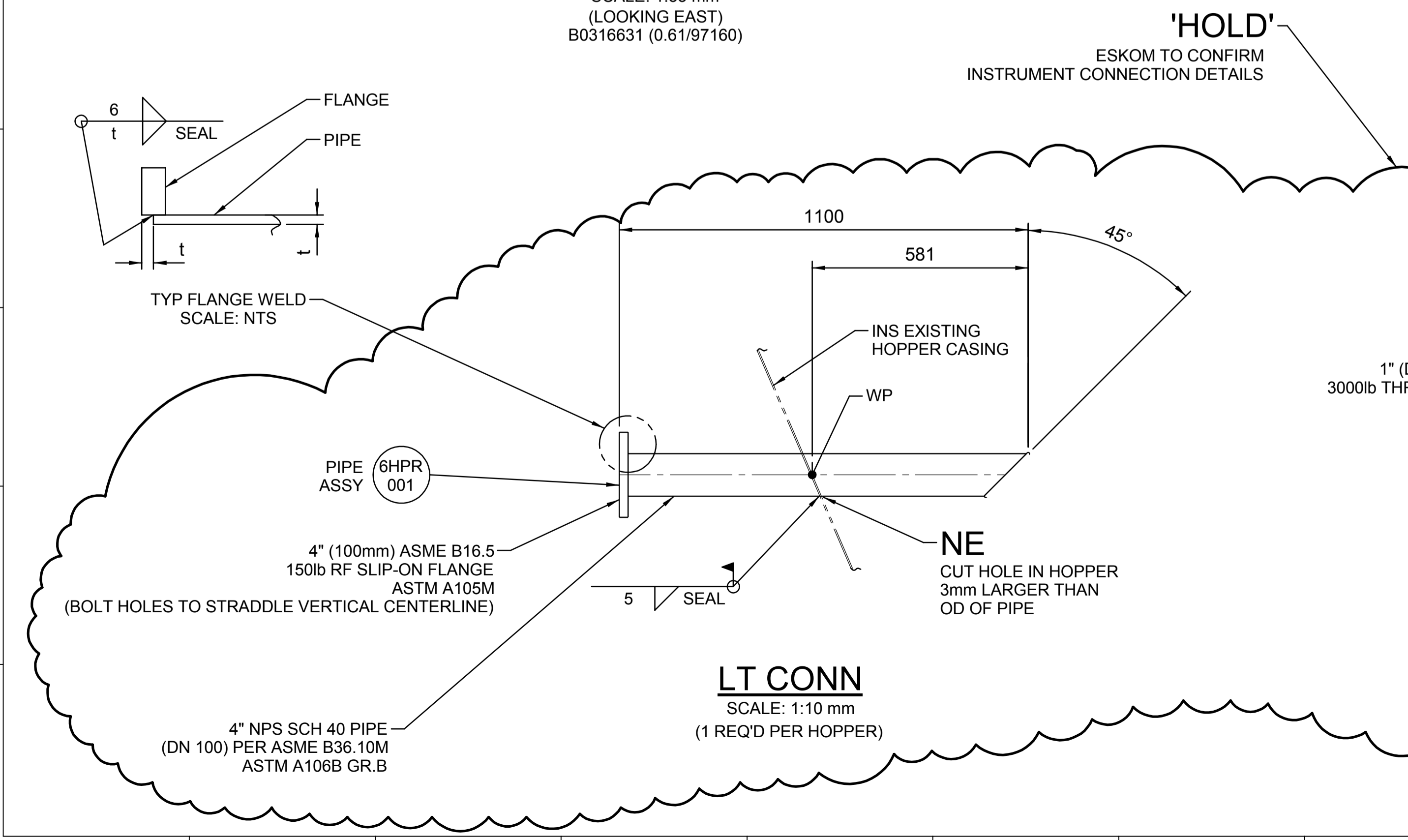


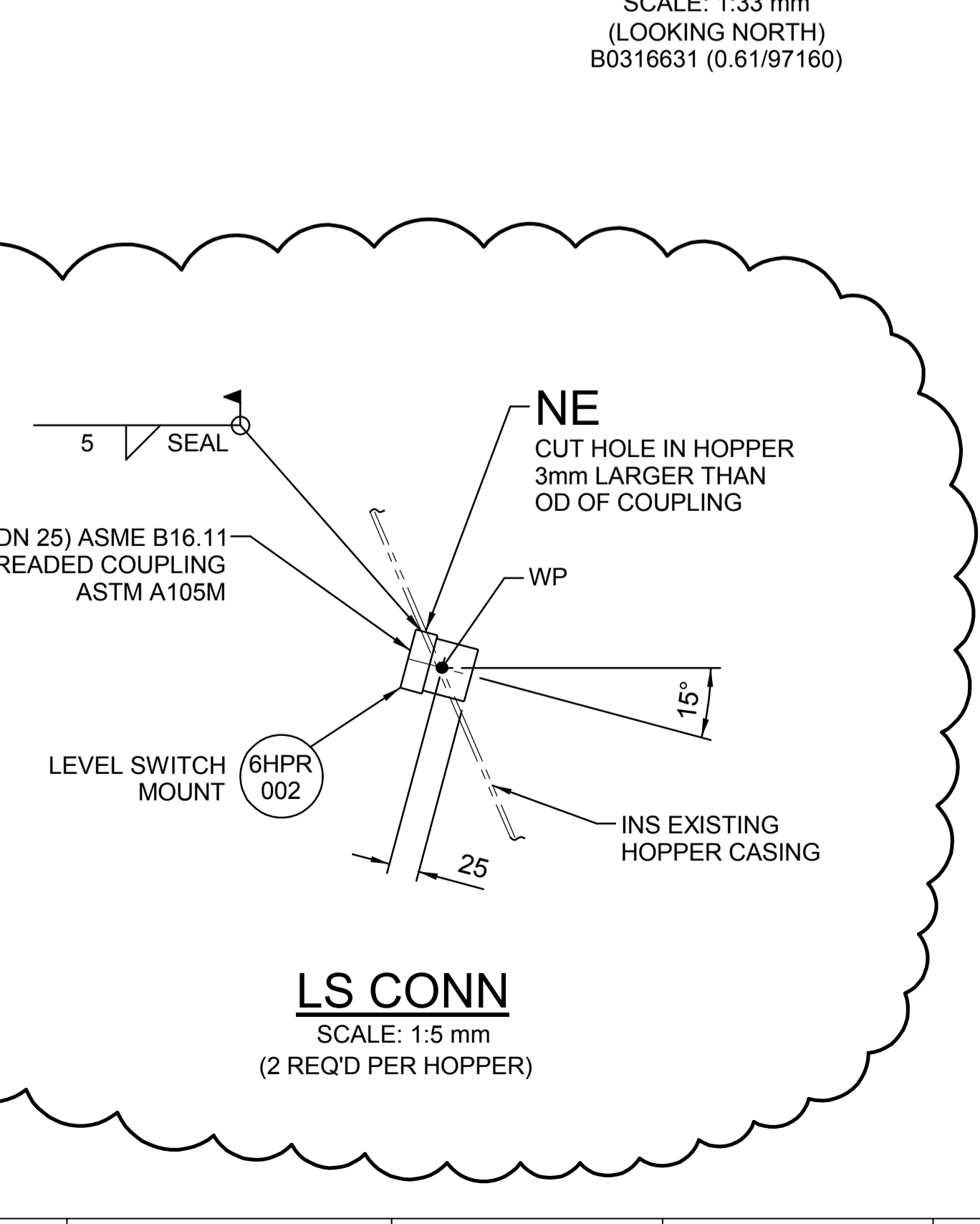
SECTION B-B
SCALE: 1:33 mm
(LOOKING EAST)
B0316631 (0.61/97160)



SECTION C-C
SCALE: 1:33 mm
(LOOKING NORTH)
B0316631 (0.61/97160)



LT CONN
SCALE: 1:10 mm
(1 REQ'D PER HOPPER)



LS CONN
SCALE: 1:5 mm
(2 REQ'D PER HOPPER)

NOTES:

- FOR FIELD ALTERATION - TUTUKA UNIT 6 FFP CASINGS A & B - PJFF HOPPER MODIFICATIONS - GENERAL INFO, NOTES & DWG LIST SEE DWG B0316630 (0.61/97159).
- FOR TYP FLANGE STABILIZER DETAIL SEE DWG B0316633 (0.61/97162).

ERECTION NOTES:

- NE1.** REMOVE OUTER 100x6 BAR STIFFENERS AND REPLACE WITH 180x12 BAR (6HPR-009). ALIGN HORIZONTALLY WITH EXISTING 180x12 BAR STIFFENER. (REF TYP FIELD SPLICE DWG B0316633 (0.61/97162)).
- NE2.** REMOVE OUTER 70x6 & 65x6 BAR STIFFENERS AND REPLACE WITH 150x8 BAR (6HPR-010). ALIGN HORIZONTALLY WITH EXISTING 150x8 BAR STIFFENER. (REF TYP FIELD SPLICE DWG B0316633 (0.61/97162)).
- NE3.** ERECTOR TO CUT AND REPAIR EXISTING VERTICAL STIFFENERS AS NECESSARY WHEN REPLACING OUTER BAR STIFFENERS.
- NE4.** ERECTOR TO CUT LENGTH OF REINFORCEMENT TO MATCH THAT OF EXISTING HOPPER STIFFENER.

"PROPRIETARY AND CONFIDENTIAL INFORMATION"

Powertech
System Integrators

THIS DESIGN DRAWING IS THE SOLE PROPERTY OF POWERTECH INDUSTRIAL & MAY NOT BE COPIED OR USED IN PART OR WHOLE WITHOUT WRITTEN PERMISSION. COPYRIGHT RESERVE.

Private Bag 95355
Waterkloof, 0145
South Africa
Tel: +27 12 426 7200
Fax: +27 12 426 7494

Babcock & Wilcox Power Generation Group, Inc.
20 SOUTH VAN BUREN AVENUE, BARBERTON, OHIO

THIS DRAWING IS THE PROPERTY OF BABCOCK & WILCOX POWER GENERATION GROUP, INC. AND CONTAINS CONFIDENTIAL AND PROPRIETARY INFORMATION OWNED BY BABCOCK & WILCOX POWER GENERATION GROUP, INC. ANY COPYING, USE, OR DISCLOSURE OF THIS DRAWING WITHOUT THE WRITTEN PERMISSION OF BABCOCK & WILCOX POWER GENERATION GROUP, INC. IS STRICTLY PROHIBITED. THIS MATERIAL IS PROTECTED UNDER TRADE SECRET AND UNFAIR COMPETITION LAWS AND THE EXPRESSION OF THE INFORMATION CONTAINED THEREIN IS PROTECTED UNDER FEDERAL COPYRIGHT LAWS.

PROJECT NO. 0635-302B	COA GB1300	DWG. NO. B0316632	REV. A1 00
Dist. Cust. YES	Dist. Erec. YES	Dist.MFG. YES	YES

2015/08/14

D.O. REV. DATE	REVISION	REV BY	CHKD BY	APP BY	AUTH BY	KKS APP	REFERENCE DRAWINGS

AUTHORISED FOR ESKOM BY: SPF CODE **360-448**

COPIED BY: **PBS PATH**

APPROVED BY: **M.J. STELLABUTO**

CHECKED BY: **M.R. DENK**

CREATED BY: **J.M. GIMEREK**

SCALE: AS NOTED

Powertech
System Integrators

B&W
BABCOCK & WILCOX

Eskom
ESKOM HOLDINGS SOC LTD.
REG. NO. 2002/01552/30

FIELD ALTERATION
TUTUKA UNIT 6 FFP CASINGS A & B
PJFF HOPPER MODIFICATIONS
SECTIONS & VIEWS

CONTRACTOR DRAWING NO.
B0316632

ESKOM DRAWING NO.
0.61/97161

SHT
1

REV
0

DRAWING CLASSIFICATION: CONFIDENTIAL