



**DEPARTMENT OF WATER AND SANITATION
REPUBLIC OF SOUTH AFRICA**

DUE AT 11:00

CLOSING DATE: 05 DECEMBER 2025

WTE188CE

SUPPLY, DELIVERY, INSTALLATION, TESTING AND COMMISSIONING OF LOCAL CONTENT DOUBLE ACCESS SECURING DOORS AND LOUVERED WALL MOUNTED VENTILATORS TO MTHATHA DAM MCC BUILDING IN THE EASTERN CAPE PROVINCE - CIDB CONTRACTOR GRADING DESIGNATION OF CIDB 1ME OR HIGHER.

SUBMIT COMPLETED BID DOCUMENTS TO:

TO BE DEPOSITED IN:

The bid box at the entrance of
Mthatha Dam Office Building
Department of Water and Sanitation
MTHATHA DAM
5100

Compulsory Briefing Session

Date: 28.11.2025

Time: 10:00am

Venue: Mthatha Dam

Construction East Site Offices

GPS Co-ordinates - S 31° 33' 03" E 28° 44' 35"

BIDDER: (Company Address OR Stamp)

COMPILED BY: CONSTRUCTION CENTRAL

DEPARTMENT OF WATER AND SANITATION

WTE188CE

**SUPPLY, DELIVERY, INSTALLATION, TESTING AND COMMISSIONING OF LOCAL
CONTENT DOUBLE ACCESS SECURING DOORS AND LOUVERED WALL MOUNTED
VENTILATORS TO MTHATHA DAM MCC BUILDING IN THE EASTERN CAPE PROVINCE -
CIDB CONTRACTOR GRADING DESIGNATION OF CIDB 1ME OR HIGHER.**

CONTENTS

INVITATION TO BID (SBD 1)

SECTION 1: LEGALITIES

SECTION 2: PRICE QUOTATION DATA

SECTION 3: PRICING SCHEDULE

**PART A
INVITATION TO BID**

BID NUMBER:	WTE 188 CE	CLOSING DATE:	05.December 2025	CLOSING TIME:	11:00
DESCRIPTION	SUPPLY, DELIVERY, INSTALLATION, TESTING AND COMMISSIONING OF LOCAL CONTENT DOUBLE ACCESS SECURING DOORS AND LOUVERED WALL MOUNTED VENTILATORS TO MTHATHA DAM MCC BUILDING IN THE EASTERN CAPE PROVINCE-CIDB CONTRACTOR GRADING DESIGNATION OF CIDB 1ME OR HIGHER.				
BID RESPONSE DOCUMENTS MAY BE DEPOSITED IN THE BID BOX SITUATED AT (STREET ADDRESS)					
The bid box at the entrance of Mthatha dam Office Building Mthatha Dam Mthatha 5100					
BIDDING PROCEDURE ENQUIRIES MAY BE DIRECTED TO			TECHNICAL ENQUIRIES MAY BE DIRECTED TO:		
CONTACT PERSON	Daniel Mongwe		CONTACT PERSON	PT Nzama	
TELEPHONE NUMBER	017 7201604		TELEPHONE NUMBER	066 302 0544	
E-MAIL ADDRESS	MongweS2@dws.gov.za		E-MAIL ADDRESS	NzamaP@dws.gov.za	
SUPPLIER INFORMATION					
NAME OF BIDDER					
POSTAL ADDRESS					
STREET ADDRESS					
TELEPHONE NUMBER	CODE		NUMBER		
CELLPHONE NUMBER					
FACSIMILE NUMBER	CODE		NUMBER		
E-MAIL ADDRESS					
VAT REGISTRATION NUMBER					
SUPPLIER COMPLIANCE STATUS	TAX COMPLIANCE SYSTEM PIN:		OR	CENTRAL SUPPLIER DATABASENo:	MAAA
B-BBEE STATUS LEVEL VERIFICATION CERTIFICATE	TICK APPLICABLE BOX] <input type="checkbox"/> Yes <input type="checkbox"/> No		B-BBEE STATUS LEVEL SWORN AFFIDAVIT	[TICK APPLICABLE BOX] <input type="checkbox"/> Yes <input type="checkbox"/> No	
[A B-BBEE STATUS LEVEL VERIFICATION CERTIFICATE/ SWORN AFFIDAVIT (FOR EMES & QSEs) MUST BE SUBMITTED IN ORDER TO QUALIFY FOR PREFERENCE POINTS FOR B-BBEE]					
ARE YOU THE ACCREDITED REPRESENTATIVE IN SOUTH AFRICA FOR THE GOODS /SERVICES /WORKS OFFERED?	<input type="checkbox"/> Yes <input type="checkbox"/> No [IF YES ENCLOSE PROOF]		ARE YOU A FOREIGN BASED SUPPLIER FOR THE GOODS /SERVICES /WORKS OFFERED?	<input type="checkbox"/> Yes <input type="checkbox"/> No [IF YES, ANSWER PART B:3]	
QUESTIONNAIRE TO BIDDING FOREIGN SUPPLIERS					
IS THE ENTITY A RESIDENT OF THE REPUBLIC OF SOUTH AFRICA (RSA)?			<input type="checkbox"/> YES <input type="checkbox"/> NO		
DOES THE ENTITY HAVE A BRANCH IN THE RSA?			<input type="checkbox"/> YES <input type="checkbox"/> NO		
DOES THE ENTITY HAVE A PERMANENT ESTABLISHMENT IN THE RSA?			<input type="checkbox"/> YES <input type="checkbox"/> NO		
DOES THE ENTITY HAVE ANY SOURCE OF INCOME IN THE RSA?			<input type="checkbox"/> YES <input type="checkbox"/> NO		
IS THE ENTITY LIABLE IN THE RSA FOR ANY FORM OF TAXATION?			<input type="checkbox"/> YES <input type="checkbox"/> NO		
IF THE ANSWER IS "NO" TO ALL OF THE ABOVE, THEN IT IS NOT A REQUIREMENT TO REGISTER FOR A TAX COMPLIANCE STATUS SYSTEM PIN CODE FROM THE SOUTH AFRICAN REVENUE SERVICE (SARS) AND IF NOT REGISTER AS PER 2.3 BELOW.					

**PART B
TERMS AND CONDITIONS FOR BIDDING**

1. BID SUBMISSION:
1.1. BIDS MUST BE DELIVERED BY THE STIPULATED TIME TO THE CORRECT ADDRESS. LATE BIDS WILL NOT BE ACCEPTED FOR CONSIDERATION.
1.2. ALL BIDS MUST BE SUBMITTED ON THE OFFICIAL FORMS PROVIDED-(NOT TO BE RE-TYPED) OR IN THE MANNER PRESCRIBED IN THE BID DOCUMENT.
1.3. THIS BID IS SUBJECT TO THE PREFERENTIAL PROCUREMENT POLICY FRAMEWORK ACT, 2000 AND THE PREFERENTIAL PROCUREMENT REGULATIONS, 2022, THE GENERAL CONDITIONS OF CONTRACT (GCC) AND, IF APPLICABLE, ANY OTHER SPECIAL CONDITIONS OF CONTRACT.
1.4. THE SUCCESSFUL BIDDER WILL BE REQUIRED TO FILL IN AND SIGN A WRITTEN CONTRACT FORM (SBD7).
2. TAX COMPLIANCE REQUIREMENTS
2.1 BIDDERS MUST ENSURE COMPLIANCE WITH THEIR TAX OBLIGATIONS.
2.2 BIDDERS ARE REQUIRED TO SUBMIT THEIR UNIQUE PERSONAL IDENTIFICATION NUMBER (PIN) ISSUED BY SARS TO ENABLE THE ORGAN OF STATE TO VERIFY THE TAXPAYER'S PROFILE AND TAX STATUS.
2.3 APPLICATION FOR TAX COMPLIANCE STATUS (TCS) PIN MAY BE MADE VIA E-FILING THROUGH THE SARS WEBSITE WWW.SARS.GOV.ZA.
2.4 BIDDERS MAY ALSO SUBMIT A PRINTED TCS CERTIFICATE TOGETHER WITH THE BID.
2.5 IN BIDS WHERE CONSORTIA / JOINT VENTURES / SUB-CONTRACTORS ARE INVOLVED; EACH PARTY MUST SUBMIT A SEPARATE TCS CERTIFICATE / PIN / CSD NUMBER.
2.6 WHERE NO TCS IS AVAILABLE BUT THE BIDDER IS REGISTERED ON THE CENTRAL SUPPLIER DATABASE (CSD), A CSD NUMBER MUST BE PROVIDED.
2.7 NO BIDS WILL BE CONSIDERED FROM PERSONS IN THE SERVICE OF THE STATE, COMPANIES WITH DIRECTORS WHO ARE PERSONS IN THE SERVICE OF THE STATE, OR CLOSE CORPORATIONS WITH MEMBERS PERSONS IN THE SERVICE OF THE STATE."

NB: FAILURE TO PROVIDE / OR COMPLY WITH ANY OF THE ABOVE PARTICULARS MAY RENDER THE BID INVALID.

SIGNATURE OF BIDDER:

CAPACITY UNDER WHICH THIS BID IS SIGNED:
(Proof of authority must be submitted e.g., company resolution)

DATE:

DEPARTMENT OF WATER AND SANITATION

WTE188CE

SUPPLY, DELIVERY, INSTALLATION, TESTING AND COMMISSIONING OF LOCAL CONTENT DOUBLE ACCESS SECURING DOORS AND LOUVERED WALL MOUNTED VENTILATORS TO MTHATHA DAM MCC BUILDING IN THE EASTERN CAPE PROVINCE - CIDB CONTRACTOR GRADING DESIGNATION OF CIDB 1ME OR HIGHER.

SECTION 1: LEGALITIES

CONTENTS

1. Instructions to Bidders
2. Declaration of Interest (SBD 4)
3. Preference Points Claim in terms of the Preferential Procurement Regulation, 2022 (SBD 6.1)
4. Instructions to Bidders: Purchases (Annexure 7)
5. General conditions of contract

DEPARTMENT OF WATER AND SANITATION

WTE188CE

SUPPLY, DELIVERY, INSTALLATION, TESTING AND COMMISSIONING OF LOCAL CONTENT DOUBLE ACCESS SECURING DOORS AND LOUVERED WALL MOUNTED VENTILATORS TO MTHATHA DAM MCC BUILDING IN THE EASTERN CAPE PROVINCE - CIDB CONTRACTOR GRADING DESIGNATION OF CIDB 1ME OR HIGHER.

1. INSTRUCTIONS TO BIDDERS

CONTENTS

1. Issuing of documents
2. Queries with respect to this bid
3. Completion of Bids
4. Submission of Bids
5. Signature on Bids
6. General Conditions of Contract
7. Bids to comply with documents
8. Telegraphic bids
9. The Department's right to decline any bid
10. Department is not liable for bidder's expenses
11. Payments made under this contract
12. Evaluation Criteria
13. Rejection of bids
14. Results of bids

INSTRUCTIONS TO BIDDERS

1. ISSUING OF DOCUMENTS

- (a)
 1. A complete set of bid documents is issued to a list of prospective Bidders, sourced from National Treasury's Central Supplier Database.
 2. Bid documents for bids advertised on CIDB will be made available on written request via E-mail.
 3. A complete set of bid documents can be downloaded from E-Portal for the bids advertised on E-Portal
- (b) Bidders must satisfy themselves that the document is complete and conform to the index of this document. Should any figures or writing be indistinct, or should any pages be missing from this document or should this document or the drawing(s) contain any obvious errors, the Bidders must immediately notify the Department in order to have any discrepancy rectified or clarified before submitting his bid. Such clarification will be valid only if made by the Department by means of formal amendment as described hereunder prior to the date of submission of bids. The Department may issue amendments to clarify or modify the Bid Documents. A copy of each amendment will be issued to each bidder and shall be acknowledged on the form issued with the amendments. No claim whatsoever will be entertained for faults in the bid price resulting from the above-mentioned discrepancies.
- (c) No alterations, omissions or additions shall be made to this document, but should it be deemed necessary to do so, the Bidder is at liberty to qualify his bid.
- (d) All Bidders shall be deemed to have waived, renounced and abandoned any conditions printed or written upon any stationery used by them for the purpose of or in connection with the submission of bids which are in conflict with the conditions laid down in this document.
- (e) Only locally produced or locally manufactured steel products from local raw material or input will be considered for this bid. The stipulated minimum threshold for local production and content for steel sector is 100%.

2. QUERIES WITH RESPECT TO THIS BID

Queries of a specific administration nature should be directed to Mr Mongwe Daniel in writing to: DD of SCM Office, Department of Water and Sanitation at MongweS2@dws.gov.za or telephonically on 017 7201604

Queries of a specific technical nature should be directed to PT Nzama in writing to NzamaP@dws.gov.za or telephonically on 066 302 0544.

3. COMPLETION OF BIDS

- (a) The bid must be signed on the Invitation to Bid form (SBD 1) annexed hereto with all blanks in the bid and the appendix filled in.
- (b) All spaces in the bid forms and other annexures shall be completed in full.
- (c) **Section 3 in the bid document and the Pricing Schedule must be fully completed and priced out by the bidder.**
- (d) The bid documents shall not be separated in any way, nor must any pages be detached from the original documents.

4. SUBMISSION OF BIDS

The Bid Document shall be completed, signed, and submitted as follows:

- (a) The original Bid, together with a cover letter and supporting documents, shall be sealed in an envelope endorsed:
"Original Bid: **WTE188CE: SUPPLY, DELIVERY, INSTALLATION, TESTING AND COMMISSIONING OF LOCAL CONTENT DOUBLE ACCESS SECURING DOORS AND LOUVERED WALL MOUNTED VENTILATORS TO MTHATHA DAM MCC BUILDING IN THE EASTERN CAPE PROVINCE -CIDB CONTRACTOR GRADING DESIGNATION OF CIDB 1ME OR HIGHER.**"

and the name of the Bidder shall be clearly shown.

- (b) Bids sealed and endorsed as above, will be deposited in the bid box at the entrance of the Mthatha dam Office Building, Department of Water and Sanitation, Mthatha Dam and not later than 11:00 on the date stipulated on the front cover of this document.

5. SIGNATURE ON BIDS

The Bid, if by an individual, must be signed by that individual or by someone on his behalf duly authorised thereto and proof of such authority must be produced. If the bid is by a Company, it must be signed by a person duly authorised thereto by a Resolution of a Board of Directors a copy of which Resolution, duly certified by the Chairman of the Company is to be submitted.

If the bid is submitted by joint venture of more than one person and/or Companies and/or firms it shall be accompanied by the following:

- (a) The original or a notarially certified copy of the original document under which such joint venture was constituted which must define precisely inter alia the conditions under which the joint venture will function, its period of duration and the participation of the several constituent persons and/or companies and/or firms.
- (b) A certificate signed by or on behalf of each participating person and/or company and/or firm authorising the person who signed the bid to do so.

Each page of the completed document that will be submitted should be initialled by the Bidder at the bottom of the page.

6. GENERAL CONDITIONS OF CONTRACT

The General Conditions of Contract (National Treasury 2010), as attached shall be regarded as an integral part of the contract documents.

7. BIDDERS TO COMPLY WITH DOCUMENTS

Where applicable, Bidders must allow in their Bids for all labour, material, machinery, and everything necessary for the execution and completion of the Contract in accordance with the bid documents. No alterations may be made in the Invitation to Bid, Schedule of Quantities or other documents and the bid will be deemed to comply entirely with the terms of the documents.

8. TELEGRAPHIC BIDS

No bid forwarded by telegram, telex, facsimile, e-mail will be considered.

9. THE DEPARTMENTS RIGHT TO DECLINE ANY BID

The Department does not bind itself to accept the lowest or any bid.

10. DEPARTMENT NOT LIABLE FOR BIDDER'S EXPENSES

The Department will not be held liable for any expenses incurred in preparing and submitting bids.

11. PAYMENTS UNDER THE CONTRACT

All payments due to the Bidders in terms of the contract will be done by means of Electronic Fund Transfer. Bid price must be firm.

12. EVALUATION CRITERIA

Bids will be evaluated in accordance with the new Preferential Procurement Regulations, 2022, using 80/20 preference points system as prescribed in the Preferential Procurement Policy Framework Act (PPPFA, Act 5 of 2000). The lowest acceptable bid in terms of value will score 80 points for price and a maximum of 20 points will be awarded for attaining the Broad-Based Black Economic Empowerment (B-BBEE) Status Level of Contribution.

Bid proposals will be evaluated based on the 80/20 preference points where a maximum of 80 points will be awarded in respect of price and a maximum of 20 points will be awarded for goals.

13. AWARD CONDITION: OBJECTIVE CRITERIA

- In terms of section 2(1) (f) of the PPPFA, the state may award a contract to a tenderer that did not score the highest points.
- With the above provision, a tender may be awarded to a bidder offering goods that meet the local content requirements than the tenderer scoring the highest points.
- A letter from the local manufacturer confirming local production and content outlining types and sizes of the items to be provided must be submitted.
- The stipulated minimum threshold percentage for local production and content of **steel is 100%** as stipulated by the Department of Trade, Industry and Competition (**the dtic**) is applicable.
- An exemption letter from **the dtic** must be obtained as per the exemption process followed by **the dtic** for items or materials that are imported and in cases whereby local content requirements cannot be met for various reasons (see exemption process followed by the dtic).

The evaluation of bids will be conducted in four (4) phases as follows:

- **Phase 1: Mandatory Requirements**
- **Phase 2: Administrative Compliance**
- **Phase 3: Technical Evaluation and Specification Compliance**
- **Phase 4: Preference Points system**

**Phase 1:
Mandatory Requirements:**

Failure to attend compulsory site briefing listed in table 1 below will render your bid non-responsive and will be disqualified.

Failure to submit any of the documents listed below will render your bid non-responsive and will be disqualified.

Table 1

No	Criteria	Yes	No
1.	Compulsory site briefing session attendance		
2.	Complete, sign, and submit SBD1, SBD 3.1, SBD 4.		
3.	Those tenderers who are registered with the CIDB, or are capable of being so prior to the evaluation of submissions, in a contractor grading designation equal to or higher than a contractor grading designation determined in accordance with the sum tendered, or a value determined in accordance with Regulation 25 (1B) or 25(7A) of the Construction Industry Development Regulations, for a 1ME Or higher class of construction work, are eligible to have their tenders 1ME evaluated. The proof of CIDB registration shall be submitted with the bid document at the closure of the Bid. A CIDB classification of at least 1ME or Higher.		
4.	Submit proof of COIDA registration		
5.	Material data sheet to be included		

Phase 2:

Administrative Compliance

Bidders are required to comply with the following listed below:

Table 2

No	Criteria	Yes	No
1.	Complete, sign, and submit SBD 6.1 according to PPR 2022 (failure to submit, the Bidder will forfeit the preferential points to be claimed)		
2.	Companies must be registered and compliant with National Treasury's Central Supplier Database.		
3.	Companies must be tax compliant with SARS (to be verified through CSD and SARS).		
4.	Companies must be actively registered with Company Intellectual Property Commission (to be verified through CSD and CIPC).		
5.	Submit an original or Certified copy of B-BBEE Status Level Verification Certificate /Sworn affidavit. (failure to submit, the Bidder will forfeit the preferential points to be claimed)		
6.	A letter from the manufacturer/supplier confirming supply arrangements must be submitted (the letter should be on the letter head of the manufacturer/supplier addressed to the bidder and be signed by the manufacturer/supplier. The letter should include the contact details of the manufacturer/supplier).		
7.	The stipulated minimum threshold percentage for local production and content for different types of steel material must be 100% local content asper stipulated by the Department of Trade and Industry (DTI) is applicable. Please make yourself aware of the stipulated minimum threshold percentage of the specific item(s) as per the specification.		
8.	Sign and submit Annexure C (Local Content), D & E with the bidding document		
9.	Complete, sign and submit LC Declaration Document in line with the PPR.doc 2022		

Phase 3:

Technical Evaluation and Specification Compliance

Compliance requirements:

- Indicate by marking the relevant column to confirm specification compliance. A bidder who fails to comply with the specification requirements as described in section 2 of this document will be disqualified and not considered for further evaluation.

Table 3

ITEM NO	DESCRIPTION (Spec / ToR)	QUANTITY	COMPLY	NOT COMPLY
1.	Outlet Louvre L1 (1 100mm Height x 1 100mm Width)	1		
2.	Inlet/Outlet Louvre L2 (1 800mm Height x 2 200mm width)	1		
3.	Inlet/Outlet Louvre L3 (1 300mm Height x 2 200mm Width)	1		
4.	Louvred Door D1 (2 100mm Height x 900mm Width)	1		
5.	Robust Stainless-Steel Door D2 (2 100mm Height x 1 500mm Width)	1		
6.	Robust Stainless-Steel Door D3 (2 100mm Height x 3 200mm Width)	1		

Note: Phase 3, Table 3 must be completed in full and section 2 (Price quotation data) must be signed.

Phase 4:

Preference Points system

The bid will be awarded in terms of Regulation 4: Preferential Procurement Regulations, 2022 pertaining to the Preferential Procurement Policy Framework Act, 2000 (Act 5 of 2000).

Bid proposals will be evaluated based on the 80/20 preference points where a maximum of 80 points will be awarded in respect of price and a maximum of 20 points will be awarded for goals.

Points claimed will be according to a bidder's specific goals claimed as indicated in Table 4 below.

Table 4: Specific goals for the tender and points allocation are indicated as per the table below:

In terms of Regulation 4(2); 5(2) of the Preferential Procurement Regulations, preference points must be awarded for specific goals stated in the tender. For the purposes of this bid the bidder will be allocated points based on the bidder's goals claimed as per table 4. Bidder's goal claimed must be supported by proof/ documentation stated as per table 4 and the special conditions of this bid where applicable:

Table 4

The specific goals allocated points in terms of this tender	Number of maximum points allocated (80/20 system)	Bidder's points claimed for specific goals (To be completed by Bidder)
Women Ownership	5	
Disability Ownership	5	
Youth Ownership	5	
Location of enterprise (local equals province) Eastern Cape Province	2	
B-BBEE status level contribution from level 1 to 2 which are QSE or EME	3	
TOTAL SCORED POINTS	20	

Specific goals” means specific goals as contemplated in section 2(1)(d) of the PPPFA Act which may include contracting with persons, or categories of persons, historically disadvantaged by unfair discrimination on the basis of race, gender and disability including the implementation of programmes of the Reconstruction of Development Programme as published in *Government Gazette* No. 16085 date 23 November 1994.

“Ownership” means the percentage ownership and control, exercised by individuals within an enterprise.

“Disability” means, in respect of a person, a permanent impairment of a physical, intellectual, or sensory function, which results in restricted, or lack of, ability to perform an activity in the manner, or within the range, considered normal for a human being.

- i. A blind person (in terms of the Blind Persons Act, 1968 (Act no.26 of 1968);
- ii. A deaf person, whose hearing is impaired to such an extent that he/she cannot use it as a primary means of communication.
- iii. A person who, because of permanent disability, requires a wheelchair, calliper or crutch to assist him/her to move from one place or another.
- iv. A person who requires an artificial limb; or
- v. A person who suffers from a mental illness (in terms of the Mental Health Act, 1973 (Act no. 18 of 1973).

“Youth” means, in respect of a person younger than 35 years of age.

“Location of enterprise” Local equals province. Where a project cuts across more than one province, the bidder may be located in any of the relevant provinces to claim and be allocated the points.

Women, disability, and youth will be measured by calculating the pro-rata percentage of ownership of the bidding company which meets the criterion. E.g., Company A has five shareholders each of whom own 20% of the company. Three of the five shareholders meet the criterion, i.e., they are women/disability/youth. Therefore, this bidder will obtain 60% of the points allowable for this goal.

Table 5: Documents required for verification of Bidder's claimed points

Documents/ information listed on the below table 5 must be submitted to support and verify points claimed as per table 4 above.

Table 5

Specific Goal	Requires Proof Documents
Women Ownership	Full CSD Report
Disability Ownership	Full CSD Report
Youth Ownership	Full CSD Report
Location of enterprise	Full CSD Report
B-BBEE status level contribution from level 1 to 2 which are QSE or EME	Valid B-BBEE certificate/sworn affidavit Consolidated B-BBEE certificate in cases of Joint Ventures (JV) Full CSD Report for each bidder who formed a (JV)

Failure on the part of a bidder to submit proof of documentation required in terms of this tender to claim for specific goals with the bid, will be interpreted to mean that preference points for specific goals are not claimed and will not be allocated.

13. REJECTION OF BID

Bids not complying with the above-mentioned requirements and specifications will be regarded as incomplete and will not be considered.

14. RESULTS OF BIDS

Results of non-acceptance of bids will be sent to individual unsuccessful bidders in due course.

DEPARTMENT OF WATER AND SANITATION**INSTRUCTIONS TO BIDDERS: PURCHASES**

1. The standard bidding forms should not be retyped or redrafted.
2. Should standard bid forms not be filled in by means of mechanical devices, for example typewriters, black ink must be used to fill in bids.
3. Bidders shall check the numbers of the pages and satisfy themselves that none are missing or duplicated. No liability shall be accepted in regard to claims arising from the fact that pages are missing or duplicated.
4. The specifications form an integral part of the bid document and bidders shall indicate in the space provided whether the items offered are to specification or not.
5. In respect of the paragraphs where the items offered are strictly to specification, bidders shall insert the words "as specified".
6. In cases where the items are not to specification, the deviations from the specifications shall be indicated.
7. The bid prices shall be given in the units shown and must be firm.
8. With the exception of basic prices, where required, all prices shall be quoted in South African currency.
9. Delivery basis:
 - (a) Supplies which are held in stock or are in transit or on order from South African manufacturers at the date of bid, shall be offered on a basis of delivery into consignee's store or on his site within the free delivery area of the bidder's centre, or carriage paid consignee's station if the goods are required elsewhere.
 - (b) Notwithstanding the provisions of paragraph 9(a), bid prices for supplies in respect of which installation/erection/assembly is a requirement, shall include ALL costs on a basis of delivered on site as specified.
10. Unless specifically provided for in the bid document, no bids transmitted by telegram, telex, facsimile, or similar apparatus shall be considered.
11. Bids received after the closing date and time are late and will as a rule is not accepted for consideration.
12. Bids will be opened in public, that is, bidders or their representatives may be present. If requested by any bidder, the names of bidders and if practical the total amount of each bid, will be read aloud.
13. The period for which offers are to remain valid and binding is indicated in the bid documents and is calculated from the closing date on the understanding that offers are to remain in force and binding until the close of business on the last day of the period calculated and if this day falls on a Saturday, Sunday or public holiday, the bid is to remain valid and binding until the close of business on the following working day.
14. These conditions (ANNEXURE 7) form part of the bid and failure to comply therewith may invalidate a bid.
15. Bidders are requested to promote local content optimally. Bidders who use locally manufactured components, products, equipment and systems, must complete the Declaration for Annexure C (Local Production and Content)
16. After public opening of bids, information relating to the examination, clarification and evaluation of bids and recommendations concerning awards will not be disclosed to bidders or other persons not officially concerned with the process, until the successful bidder is notified of the award. The bid documentation of bidders is considered to be confidential and will under no circumstances be made available to other bidders or other persons.

17. The financial standing of bidders and their ability to manufacture or to supply goods or to render a service may be examined before their bids are considered for acceptance.
18. The Department may, where a bid relates to more than one item, accept such bid in respect of any specific item or items and also accept part of the specified quantity of any specific item or items.
19. The Department is not obliged to accept any bid. The evaluation of a bid will be done in accordance with the Preferential Procurement Policy Framework Act, 2000 (Act no. 5 of 2000) and its regulations.
20. After approval of the bid, both parties must sign a written contract.
21. Failure of the successful bidder to sign the Contract Form in ink may result in the invalidation of their bid.

DEPARTMENT OF WATER AND SANITATION

WTE188CE

SUPPLY, DELIVERY, INSTALLATION, TESTING AND COMMISSIONING OF LOCAL CONTENT DOUBLE ACCESS SECURING DOORS AND LOUVERED WALL MOUNTED VENTILATORS TO MTHATHA DAM MCC BUILDING IN THE EASTERN CAPE PROVINCE - CIDB CONTRACTOR GRADING DESIGNATION OF CIDB 1ME OR HIGHER.

SECTION 2: PRICE QUOTATION DATA

CONTENTS

1. STIPULATIONS

STIPULATIONS

1.	<p>SERVICE</p> <p>The service to be rendered is:</p> <p>SUPPLY, DELIVERY, INSTALLATION, TESTING AND COMMISSIONING OF LOCAL CONTENT DOUBLE ACCESS SECURING DOORS AND LOUVERED WALL MOUNTED VENTILATORS TO MTHATHA DAM MCC BUILDING IN THE EASTERN CAPE PROVINCE -CIDB CONTRACTOR GRADING DESIGNATION OF CIDB 1ME OR HIGHER</p>
2.	<p>SITE</p> <p>Department of Water and Sanitation Mthatha Dam Office Building MTHATHA DAM Eastern Cape Province</p> <p>Coordinates - S 31° 33' 03" E 28° 44' 35</p>
3.	<p>STANDARD SPECIFICATIONS</p> <p>ITEM 1: SECURITY DOORS</p> <p>➤ Security doors (Security door type –TDI – Rasmatech or equal) Complete with frame (Retrofit type) with no ventilation louvre panels fitted on the doors. The doors shall be fitted into pre-cast openings in concrete walls.</p> <ul style="list-style-type: none"> ➤ Material: Stainless steel 304 Coated – (Colour coated) ➤ Front panel: 3mm Stainless steel 304 plate min. ➤ Rear Panel: 1.2 mm Stainless steel 304 plate min. ➤ Louvre Panels: None required. ➤ Top inside bolt: 16 mm stainless steel rod ➤ Bottom inside bolt: 16 mm stainless steel rod ➤ Hinges: Continuous full length both sides if applicable. (stainless steel) ➤ Paint coating colour: Olive green ➤ Panels to be secured with stainless steel rivets - (4mm min) ➤ Retro-fit: Yes ➤ Door frame gap: 0-2mm max. ➤ Panels to be secured with stainless steel rivets - (4mm min) ➤ Doors complete with handles on in and outsides and fitted with internal stiffeners. ➤ High security type locks to be provided. ➤ Door shall be supplied with bottom brush weather strip and automatic door catches. ➤ Door shall be supplied with a retrofit frame to fit into pre-cast openings in concrete walls. (Exact dimensions to be verified on the site.)

- Corrosion protection shall comply to DWS 9900 specification.

ITEM 2: WALL MOUNTED LOUVERED VENTILATORS

- Secure ventilation louver – Retrofit type: (Rasmatech or equal)
- The ventilated louvres shall fit into pre-cast openings in concrete walls. The ventilation louver shall prevent ingress of water to the inside of the room and shall be supplied with stainless steel vermin proofing on the inside.
- Material: 3mm (Min.) Stainless steel 304 plate - Coated – (Colour coated)
- Louvre blade: Double bend type for high security
- Vertical reinforcing bars: Inside and outside
- Paint coating colour: Olive green
- Securing of 3mm plates: Stainless steel monobolts - (4mm min)
- Retro-fit: Yes (To be secured into existing opening in a concrete wall)
- Vermin proof mesh: Stainless steel woven mesh on inside room.
- The Ventilation louver shall be retrofit to fit into pre-cast openings in concrete walls with stainless steel anchor bolts (M10 Min.) (Exact dimensions to be verified on the site)
- Corrosion protection shall comply with DWS 9900 specification.

See attached specification (particular specification MTA 1-2) and drawings Reg. No.180 096/23, Reg. No. 180 098/23 and Reg. No. 180 098/23

4. SCOPE OF CONTRACT

Bidder

The Bidder will be required to perform the following service as part of this contract and comply with PARTICULAR SPECIFICATION MTA 1-2:

- I. Supply, delivery installation, fitting, test and commissioning of double access security doors.
- II. Supply, delivery, installation, test and commissioning of louvered wall mounted ventilators.
- III. Workshop corrosion protection of all items manufactured, complete with (where applicable) welded in-situ ancillaries (nozzles, sliding support reinforcement, anchorages, etc.)
- IV. Remedial corrosion protection where necessary to remedy damage to items supplied by others occurring after installation of such equipment but prior to handing over to the Department.
- V. Supply of all fasteners and washers for complete installation of all the items.
- VI. Providing manufacturing drawings for all equipment prior to manufacturing.
- VII. Providing as-built drawings for all items for record purposes.
- VIII. Supply a full set of Quality Control documents (Data pack) for the doors.
- IX. Supply a full set of Quality Control documents (Data pack) for the ventilation louvers.

5.	<p>QUANTITIES REQUIRED / DELIVERY</p> <p>The total quantity as per SBD 3.1</p> <p>The Bidder will not be entitled to claim any form of compensation for any requirement variations in the total quantities or specific quantities whatsoever.</p> <p>NOTE: THE DEPARTMENT RESERVES THE RIGHT TO CHANGE THE QUANTITY/ QUANTITIES TO BE ORDERED FROM THE SUCCESSFUL BIDDER.</p>
6.	<p>PROGRAMME OF WORKS</p> <p>The supply of the required goods must be supplied in specified time after receipt of official DWS order.</p>
7.	<p>COSTS</p> <p>Bidders shall provide in their bid for all labour, plant, material, implements and vehicles necessary for the execution of the contract and all operating and maintenance costs in accordance with the bid documents.</p>
8.	<p>DELIVERY</p> <p>Deliveries may be made during the following working hours 7h30 to 15h00 from Monday to Thursday but not on the following days or periods:</p> <ul style="list-style-type: none"> (i) Fridays 14h00 to Mondays 7h00 (ii) All public holidays (iii) The period 10 December to 07 January (iv) The last Thursday and Friday of the month <p>The Bidder shall nominate a contact person with whom the Department will arrange and schedule deliveries. Official Purchase orders for material will be placed 48 hours before delivery is required.</p> <p>Additionally, will DWS Construction perform testing of all supplied material delivered to site to ensure that all material do comply with the relevant specification.</p> <p>The declined consignments must be removed from site within 5 working days at the Bidders own cost. The ownership of and risk for purchased material will pass to the Department at the point of delivery i.e., where a signed acceptance take place.</p>
9.	<p>DELIVERY PERIOD</p> <p>A firm delivery period is required. Adherence to bid delivery period is of utmost importance.</p> <p>Note that the penalty for late delivery prescribed in paragraph 13 of the Specification will be imposed.</p>
10.	<p>BID PRICE AND DELIVERY PERIODS</p> <p>All-inclusive bid prices are required, meaning delivery and any other cost mentioned in the specification for the Bidders account must be included in the unit price.</p>

11.	<p>PENALTIES AND DELAY DAMAGES</p> <p>The penalties referred to in clause 25 of the General Conditions of Contract state if the supplier fails to deliver any or all of the goods or to perform the services within the period(s) specified in the contract, the purchaser shall, without prejudice to its other remedies under the contract, deduct from the price as a penalty, a sum services using the current prime interest rate calculated for each day of the delay until actual delivery or performance. The purchaser may also consider termination of the contract pursuant to GCC clause 23.</p>
12.	<p>PAYMENT</p> <p>Payment will be made as per pricing schedule; no interim payments will be made.</p> <p>The Department reserves the right to check the quantities of goods supplied at any time.</p> <p>Payment will not be made for consignment unless supported by delivery notes duly signed by the official checking the delivery.</p> <p>Payment will be done within 30 days of receipt and approval of original invoice by depositing the payment directly into the bank account of the successful bidder. No cash or cheque payment will be done.</p>
13.	<p>SAFETY AND ENVIRONMENTAL</p> <p>Bidders are required to adhere to the Departments Safety and Environmental policies.</p>

Herewith I, _____(Bidder's Name) declare that I have read, completed and understood the above specifications.

BIDDER'S SIGNATURE

DEPARTMENT OF WATER AND SANITATION

WTE188CE

SUPPLY, DELIVERY, INSTALLATION, TESTING AND COMMISSIONING OF LOCAL CONTENT DOUBLE ACCESS SECURING DOORS AND LOUVERED WALL MOUNTED VENTILATORS TO MTHATHA DAM MCC BUILDING IN THE EASTERN CAPE PROVINCE - CIDB CONTRACTOR GRADING DESIGNATION OF CIDB 1ME OR HIGHER.

SECTION 3: SBD 3.1 – PRICING SCHEDULE

CONTENTS

1. PREAMBLE TO THE SBD 3.1 – PRICING SCHEDULE

PREAMBLE TO THE SBD 3.1 – PRICING SCHEDULE

1. GENERAL

The SBD 3.1 forms part of the Contract Documents and must be read and priced in conjunction with all the other documents which include the Conditions of Contract and all other Specifications in the bid document.

2. QUANTITIES REFLECTED IN THE PRICING SCHEDULE

The quantities given in the SBD 3.1 can be subject to change. The Department reserves the right to purchase a lesser/higher quantity as indicated in the SBD 3.1

The validity of the contract will in no way be affected by differences between the quantities in the SBD 3.1 and the quantities finally certified for payment.

Only fair market prices will be accepted, and the Department reserves the right to not award the bid to the lowest scoring bidder if it is determined that the prices quoted is not market related.

3. PRICING OF THE SCHEDULE

The rates to be filled in the SBD 3.1 should include all costs. All rates and amounts quoted in the SBD 3.1 shall be in rand and shall include VAT.

4. CORRECTION OF ENTRIES

Incorrect entries shall not be erased or obliterated with correction fluid but must be crossed out neatly. The correct figures must be entered above or adjacent to the deleted entry, and the alteration must be initialled by the Bidder.

PRICING SCHEDULE

(Firm Price)

DEPARTMENT OF WATER AND SANITATION

WTE188CE

SUPPLY, DELIVERY, INSTALLATION, TESTING AND COMMISSIONING OF LOCAL CONTENT DOUBLE ACCESS SECURING DOORS AND LOUVERED WALL MOUNTED VENTILATORS TO MTHATHA DAM MCC BUILDING IN THE EASTERN CAPE PROVINCE - CIDB CONTRACTOR GRADING DESIGNATION OF CIDB 1ME OR HIGHER.

THIS PRICING SCHEDULE MUST BE COMPLETED IN FULL

CLOSING TIME: 11:00

CLOSING DATE: 05 December 2025

BID NO. WTE188CE

NAME OF BIDDER:

OFFER TO BE VALID FOR 120 DAYS FROM CLOSING DATE OF BID

ITEM NO.	DESCRIPTION	QUANTITY	BID PRICE
1.	Outlet Louvre L1 , (1 100mm Height x 1 100mm Width)	1	R.....
2.	Inlet/Outlet Louvre L2 , (1 800mm Height x 2 200mm width)	1	R.....
3.	Inlet/Outlet Louvre L3 , (1 300mm Height x 2 200mm Width)	1	R.....
4.	Louvred Door D1 (2 100mm Height x 900mm Width)	1	R.....
5.	Robust Stainless-Steel Door D2 , (2 100mm Height x 1 500mm Width)	1	R.....
6.	Robust Stainless-Steel Door D3 , (2 100mm Height x 3 200mm Width)	1	R.....
SUB TOTAL			R
VAT @ 15%			R
TOTAL BID PRICE			R

- Delivery basis.
(See note hereunder)

**To Site
Mthatha dam
Eastern Cape Province**

- **Period required for delivery after receipt of order:**

14 Days

NOTE:

- **All delivery costs must be included in the bid price.**
- **All the relevant information in SBD 3.1 must be completed**

Any enquiries regarding bidding procedures may be directed to the –

Department Water and Sanitation
Supply Chain Management Office
Construction East,
PRIVATE BAG X2023
Standerton
2430.

Administrative information:

Mr Daniel Mongwe, E-mail: MongweS2@dws.gov.za

or

For Technical or site information:

Ms. P Nzama/066 302 0544, E-mail: NzamaP@dws.gov.za

SPECIFICATIONS:

1. CONCRETE CONCRETE
ROOF WALLS AND TRANSFORMER CHAMBER FOUNDATION 15/20
2. COVER TO REINFORCEMENT - 50 mm
3. ALL EXPOSED CONCRETE SURFACES TO BE FINISHED WITH SIZE 15/20
4. TOP AND BOTTOM SURFACES OF TRANSFORMER ROOM AND MCC ROOM FLOORS AND ALL PLATES TO BE REINFORCED WITH SIZE 15/20
5. FINAL FOUNDATION DEPTH TO BE CONFIRMED BY THE ENGINEERING GEOLOGIST OR ENGINEER ON SITE
6. 150 CONCRETE SHALL BE INCORPORATED 2 m DEEP AND ROCK FOUNDATION CONCRETE SHALL BE SPACED AT 2 m C/C BOTH WAVES. THE DONUTS SHALL BE REINFORCED WITH 20 mm DIA BARS. THE REINFORCEMENT SHALL BE 200 mm DIA BARS. THE REINFORCEMENT SHALL BE 200 mm DIA BARS. THE REINFORCEMENT SHALL BE 200 mm DIA BARS.
7. NO-PORE CONCRETE SHALL NOT BE USED ANYWHERE IN THE STRUCTURE
8. AN APPROVED EXPANSION/ISOLATION JOINT SHALL BE PROVIDED TO LOCATE THE TRANSFORMER FROM INITIAL DESIGN TO THE MAXIMUM LEVEL DURING INSTALLATION. THE TRANSFORMER PUMP CAN BE WELDED FROM THE STEEL CONCRETE. CHECK WITH THE CONTRACTOR OF THE MATERIAL.

FINISHES:

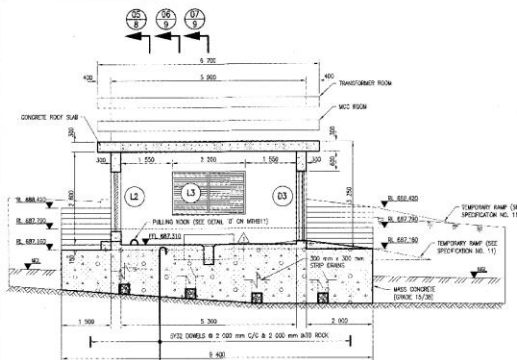
1. THE FLOOR SURFACE OF THE TRANSFORMER ROOM AND MCC ROOM TO BE FINISHED OFF AS FOLLOWS:
- THE FINISHED CONCRETE SURFACE SHALL BE FINISHED WITH SIZE 15/20. THE FINISHED CONCRETE SURFACE SHALL BE FINISHED WITH SIZE 15/20. THE FINISHED CONCRETE SURFACE SHALL BE FINISHED WITH SIZE 15/20.
2. THE FLOOR SHALL BE FINISHED OFF AS FOLLOWS:
- THE FLOOR SHALL BE FINISHED OFF AS FOLLOWS. THE FLOOR SHALL BE FINISHED OFF AS FOLLOWS. THE FLOOR SHALL BE FINISHED OFF AS FOLLOWS.
3. ALL EXPOSED PARTS SHALL BE AS FOLLOWS EXCEPT WHERE OTHERWISE SHOWN:
CLASS F2 AND G2
CLASS F1 AND G1
CLASS F3 AND G3

NOTES:

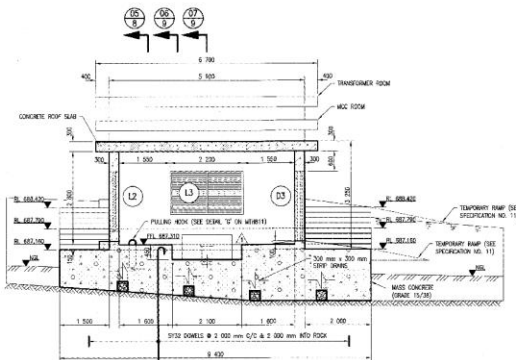
1. FOR DOOR AND WINDOW SCHEDULES SEE ENCL. REF. NO. 100 (S/21)
2. FOR ALL MECHANICAL AND ELECTRICAL ITEMS AND THEIR SPECIFICATIONS, REFER TO MECHANICAL DRAWINGS AND ELECTRICAL DRAWINGS, RESPECTIVELY.

ROOF WATERPROOFING:

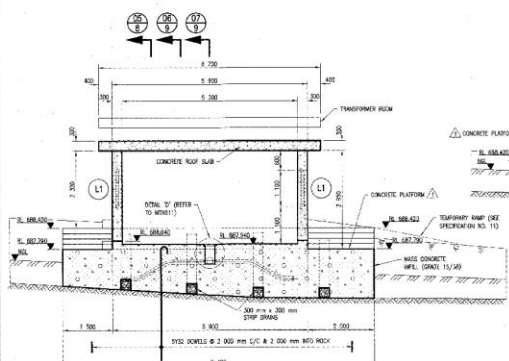
WATERPROOFING TO BE A MEMBRANE TYPE ON PLASTERING WATERPROOFING MEMBRANE FOR ALL VERTICAL AND HEAVY DUTY APPLICATIONS. FINISH WITH TWO COATS OF NON-ELECTRIC PAINT. THE CONTRACTOR TO SUBMIT DETAILS OF THE PRODUCT HE INTENDS TO USE FOR APPROVAL BY THE DESIGN ENGINEER, AS WELL AS THE DETAILS OF THE SUB-CONTRACTOR HE INTENDS TO USE FOR THE APPLICATION.



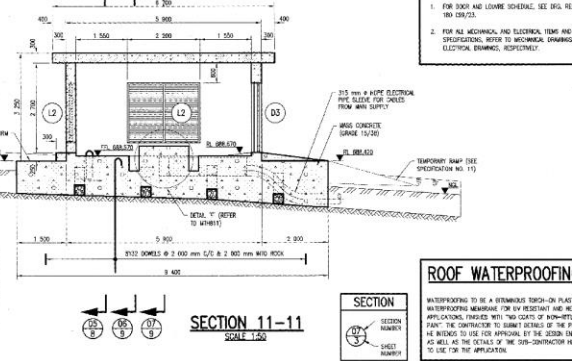
SECTION 08-08
SCALE 1:50



SECTION 09-09
SCALE 1:50



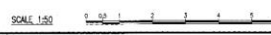
SECTION 10-10
SCALE 1:50



SECTION 11-11
SCALE 1:50

LEGEND:

- NATURAL FINISH LEVEL
- REINFORCED / FOUNDATION LEVEL



NO.	DATE	REVISION	BY	CHKD.	APP.
1	10/16	ISSUED FOR TENDER			
2	10/16	REVISIONS			

REVISIONS

NO. 1 DATE 10/16 BY [Signature] CHKD. [Signature] APP. [Signature]

NO. 2 DATE 10/16 BY [Signature] CHKD. [Signature] APP. [Signature]

GENERAL LAYOUT

INTENTED 180 098/23

DATE 10/16

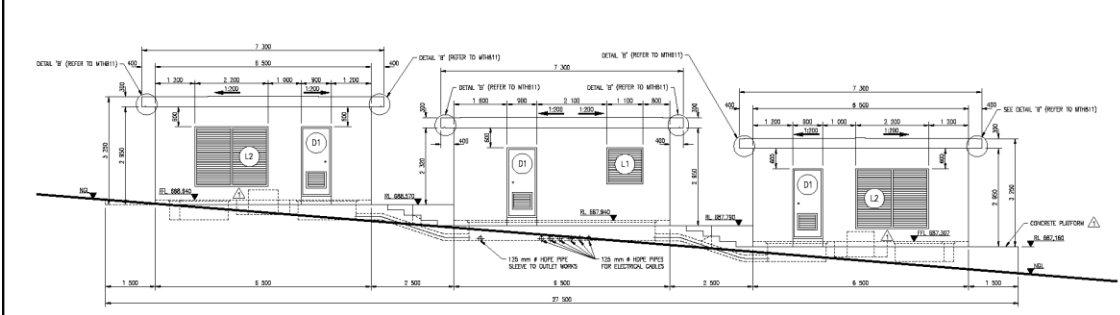
PROJECT MTHATHA DAM

TRANSFORMER ROOMS AND MCC ROOM

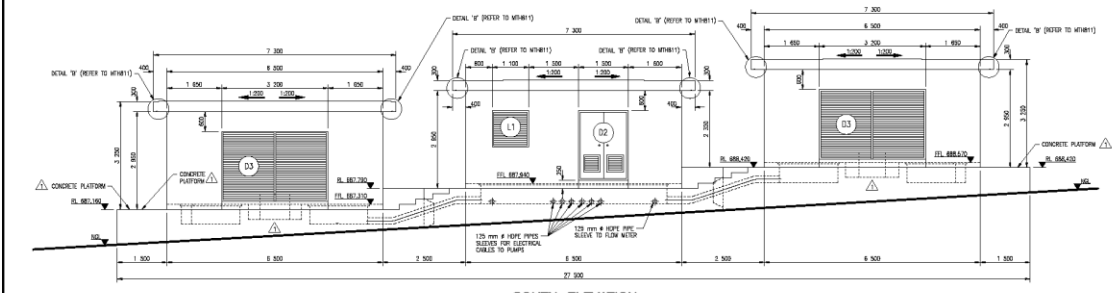
SECTION 08-08 TO SECTION 11-11

SCALE 1:50

180 098/23 01



NORTH ELEVATION
SCALE 1:50



SOUTH ELEVATION
SCALE 1:50

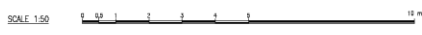
- SPECIFICATIONS:**
- CONCRETE GRADES:
ROOF, WELLS, AND STORMWATER CHANNEL: 20/70
FOUNDATION: 15/25
 - CORNER REINFORCEMENT - 40 mm.
 - ALL EXPOSED CONCRETE GRADES TO BE FINISHED TO 28 mm x 125 mm.
 - TOP AND BOTTOM FACES OF TRANSFORMER ROOM AND MCC ROOM FLOORS AND ALL FINISHES TO BE REINFORCED WITH STEEL MESH NO. 617.
 - FINAL FOUNDATION DEPTH TO BE CONFIRMED BY THE ENGINEERING CONSULTANT OF FOUNDERS ON SITE.
 - 125 mm DIAMETERS SHALL BE PROVIDED IN A 100 mm DEEP NON-COMPRESSION GROUT AND SPACED AT 3 m C/C BOTH SIDES. THE SPACERS SHALL BE PLACED PERPENDICULAR TO EACH SIDE OF THE PILE / CONCRETE. REINFORCE WITH A 100 mm EPOXY RESIN COATING USING SHANGHAI-43N OR EQUAL. COLOUR OF SHANGHAI-43N FOR APPROVAL BY THE ENGINEER.
 - AN APPROPRIATE EMISSION/INSULATION FROM SPRAY SHOULD BE USED TO SEAL ALL ELECTRICAL DUCTS.

- NOTES:**
- FOR DOOR AND WINDOW SCHEDULES, SEE CHG. RES. NO. 100/000/001.
 - FOR ALL MECHANICAL AND ELECTRICAL ITEMS AND THEIR SPECIFICATIONS, REFER TO MECHANICAL DRAWINGS AND ELECTRICAL DRAWINGS, RESPECTIVELY.

- FINISHES:**
- THE FLOOR SURFACE OF THE TRANSFORMER ROOM AND MCC ROOM TO BE FINISHED OFF AS FOLLOWS:
- THE FINISHED CONCRETE RESUME SURFACE SHALL HAVE AN EXPOSED CORNER AGGRESSIVE FINISH. IF NOT, IT SHALL BE LIGHTLY ROUGHENED, AND ALL LAMINAE BE REMOVED.
- THE FLOOR SHALL BE SUFFICIENTLY CURED FOR AT LEAST 28 DAYS BEFORE APPLICATION OF THE FLOOR SURFACING. ALL STANDING WATER BE REMOVED BEFORE APPLICATION.
- THE FLOOR SURFACING MIX SHALL BE SAND-DRIED AND BLENDED TO 1.5 m x 1.5 m MAXIMUM SIZE, WHICH WILL BE FILLED AUTOMATICALLY.
- IMMEDIATELY BEFORE APPLICATION OF THE FLOOR SURFACING, A CONTINUOUS SUPPLY MIXED WITH SUBSEQUENT LAYER SHALL BE APPLIED TO THE RECEIVING SURFACE.
- THE FLOOR SURFACING SHALL BE 25 mm THICK AND CONSIST OF FLOORING OVERLAY OR EQUAL.
- THE FINISHING SURFACING SHALL BE STEEL-FLOURED.
- CURING TO BE DONE FOR 7 DAYS MINIMUM.
 - ALL SHOOTER FINISHES SHALL BE AS FOLLOWS, EXCEPT WHERE SPECIFICED OTHERWISE:
CLASS F3 AND U1
- TO SURFACES EXPOSED TO VIEW.
CLASS F1 AND U1
- TO SURFACES AGAINST WHICH SHROUFL OR FURTHER CHANGES WILL BE PLACED.
OTHER FINISHES INDICATED AS FOLLOWS:
CLASS F3 CLASS U2

ROOF WATERPROOFING:

WATERPROOFING TO BE A BITUMINOUS TYPICAL PLASTIMERIC WATERPROOFING MEMBRANE FOR LOW RESISTANT AND HEAVY DUTY APPLICATIONS. FINISHED WITH TWO COATS OF NON-BITUMINOUS PAINT. THE CONTRACTOR TO SUBMIT DETAILS OF THE PRODUCT HE INTENDS TO USE FOR APPROVAL BY THE DESIGN ENGINEER, AS WELL AS THE DETAILS OF THE SUB-CONTRACTOR HE INTENDS TO USE FOR THE APPLICATION.



REVISION NO. DATE DESCRIPTION BY CHK. 15/74 OIL TRUCKS, PLANTING, AND WIND-DRIVEN AIRRAID SM		ENGINEERING OFFICE REPUBLIC OF SOUTH AFRICA 160 PRINCE ALBERT STREET JOHANNESBURG 2001		CLIENT S.S. MATHATHA 180 094/23	
PROJECT MTHATHA RIVER GOVERNMENT WATER SCHEME MTHATHA DAM TEMPORARY BY-PASS SPURTON TRANSFORMER ROOMS AND MCC ROOM NORTH ELEVATION AND SOUTH ELEVATION		DESIGNER S.S. MATHATHA		DATE 1981-03	
SCALE 1:50		PROJECT NO. 180 094/23		REV. NO. 01	