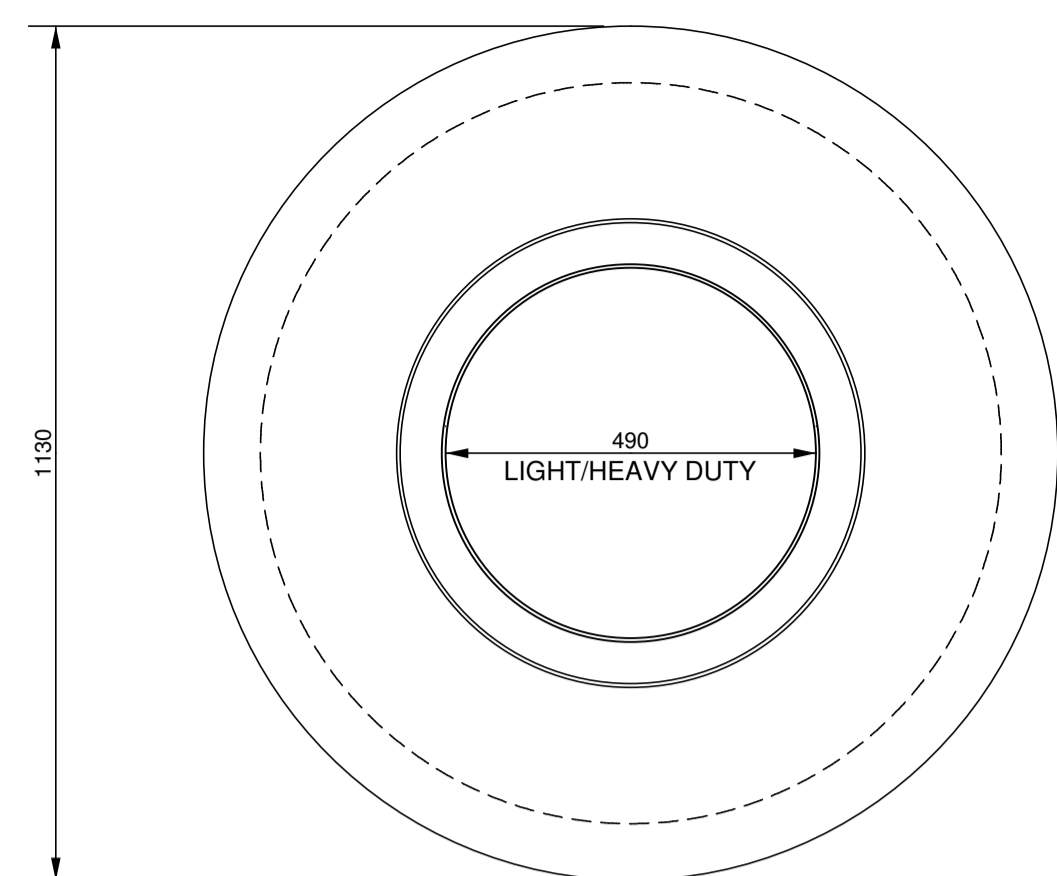
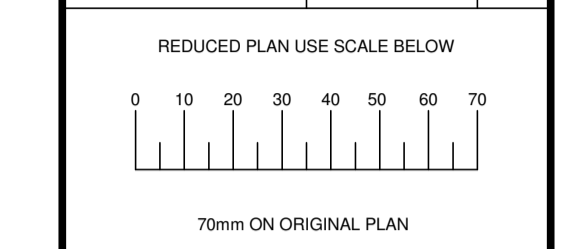
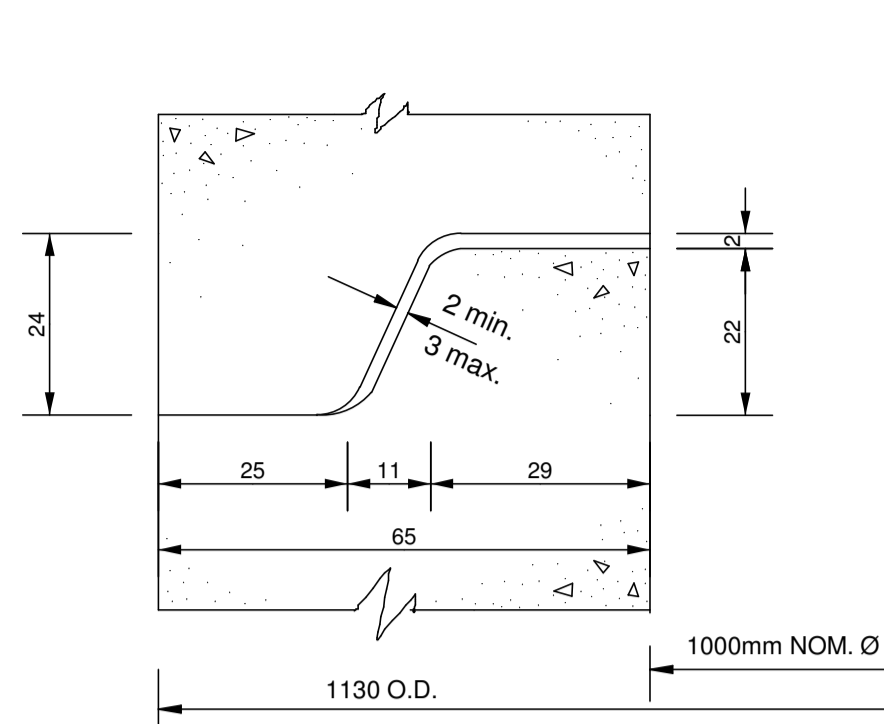




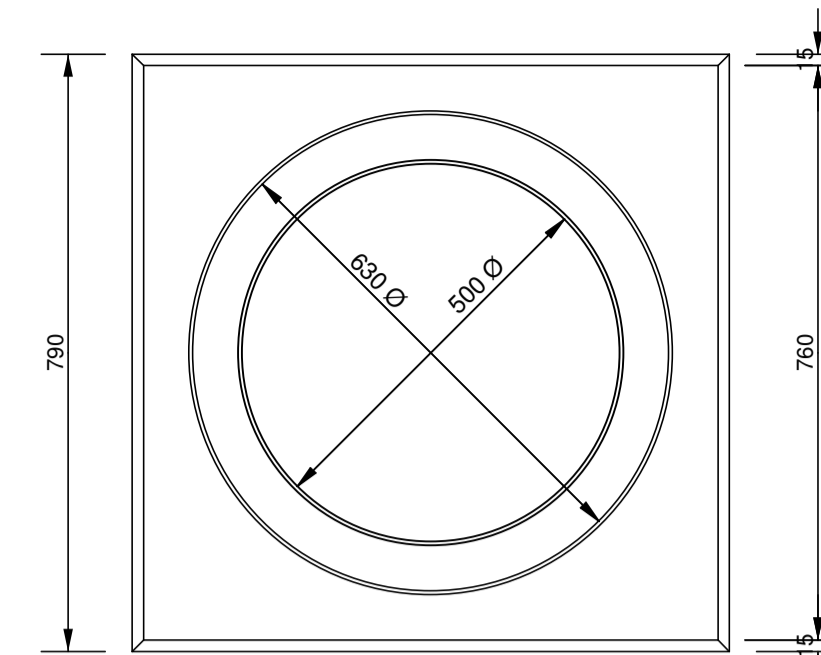
CITY ENGINEERS	
SERVICE UNIT	
ROADS DEPARTMENT	
PLAN DESCRIPTION	DWG. NO.
CONTINUED FROM	
CONTINUED ON	
CROSS SECTIONS	
TYPICAL CROSS SECTION	
SURVEY LAYOUT	



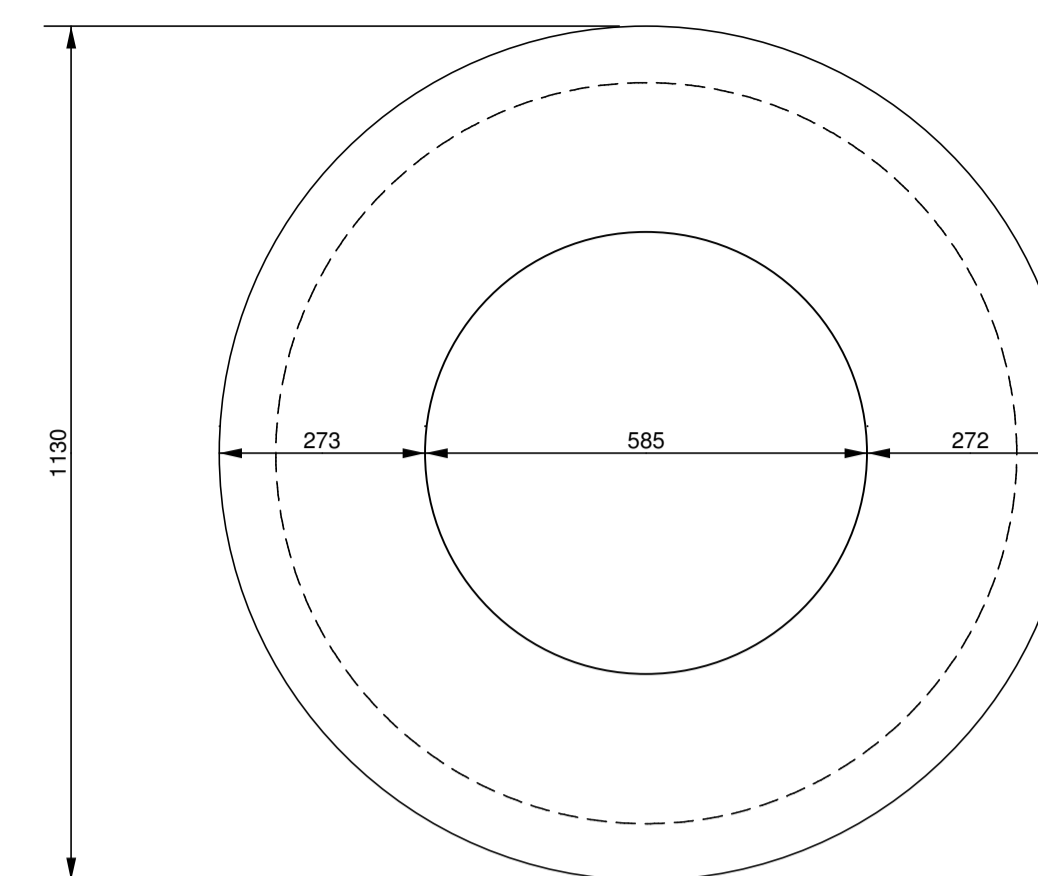
PLAN OF CIRCULAR LIGHT AND HEAVY DUTY FRAME FOR 1000 NOM. DIA. MANHOLE



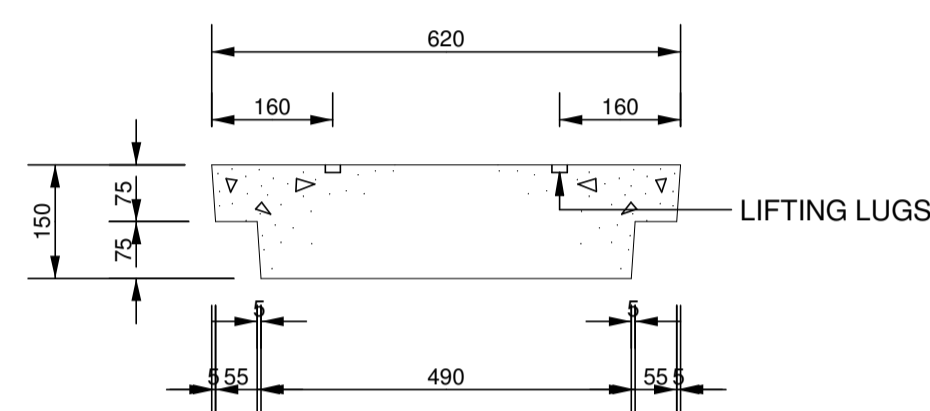
ALL RADII TO BE 10mm
DETAIL OF JOINT



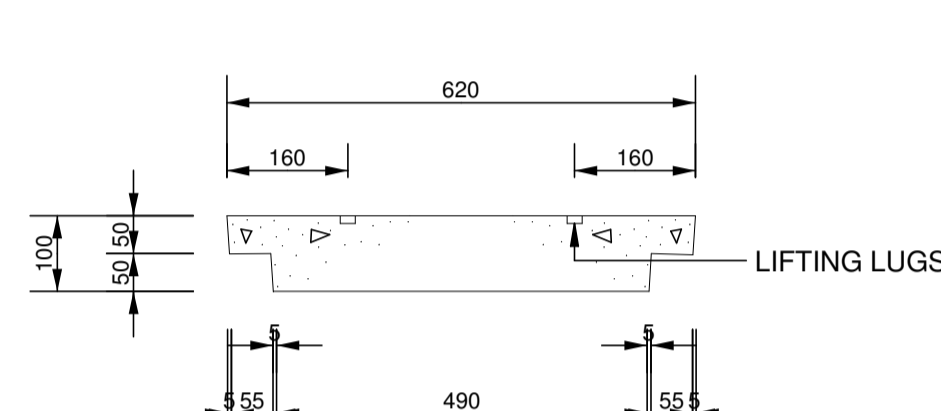
PLAN



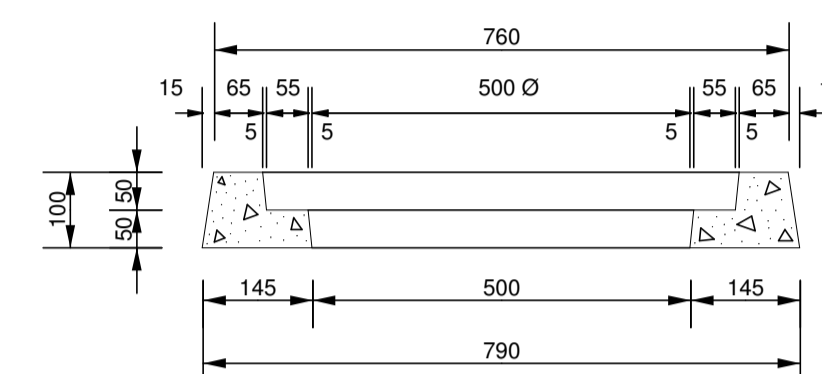
PLAN OF CIRCULAR COVER SLAB



SECTION OF CIRCULAR HEAVY DUTY MH COVER



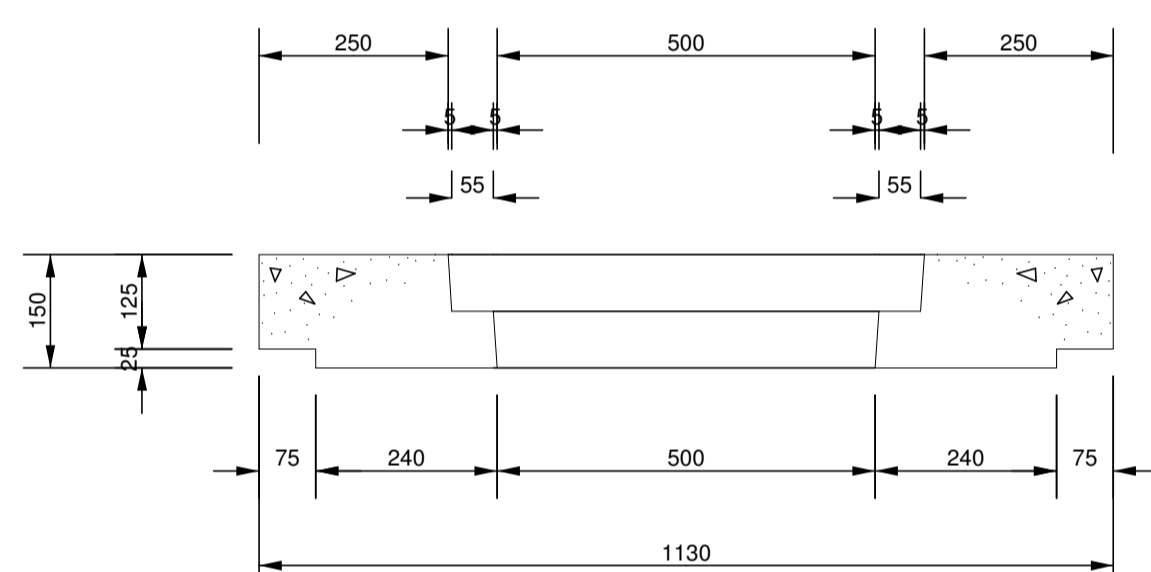
SECTION OF CIRCULAR LIGHT DUTY MH COVER



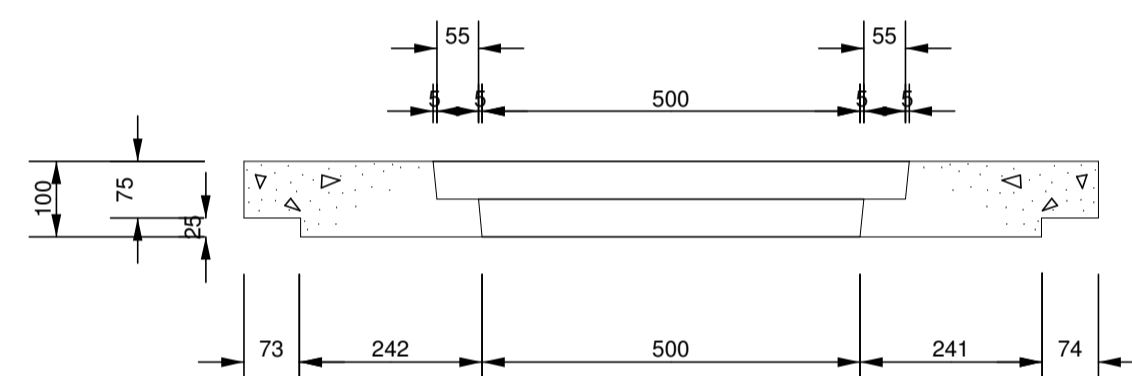
SECTION OF LIGHT DUTY SQUARE MANHOLE FRAME



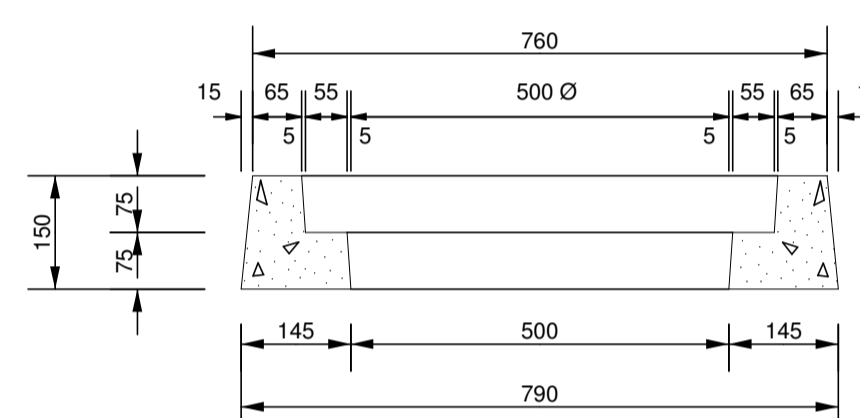
SECTION OF CIRCULAR COVER SLAB



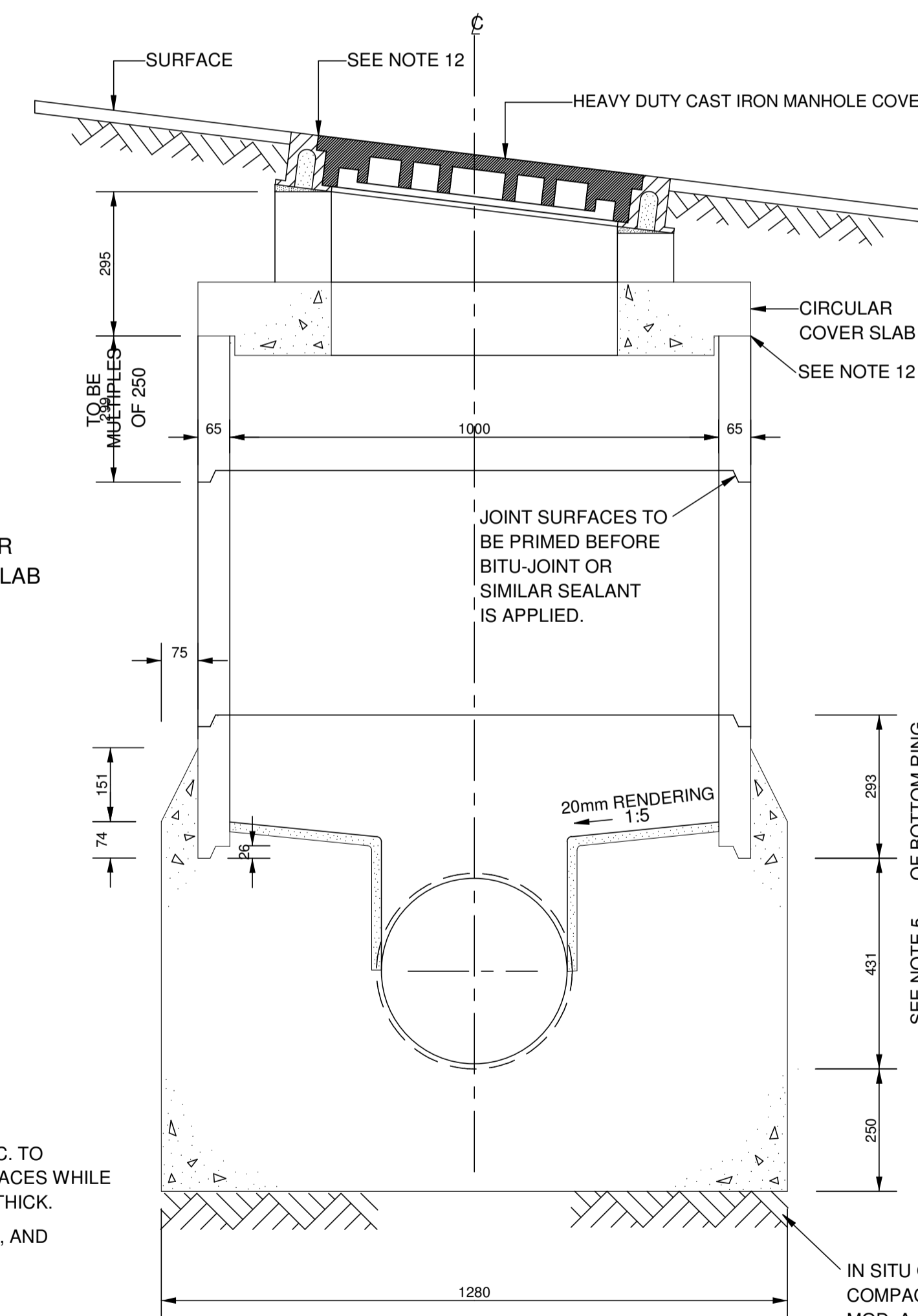
SECTION OF CIRCULAR HEAVY DUTY M.H. FRAME



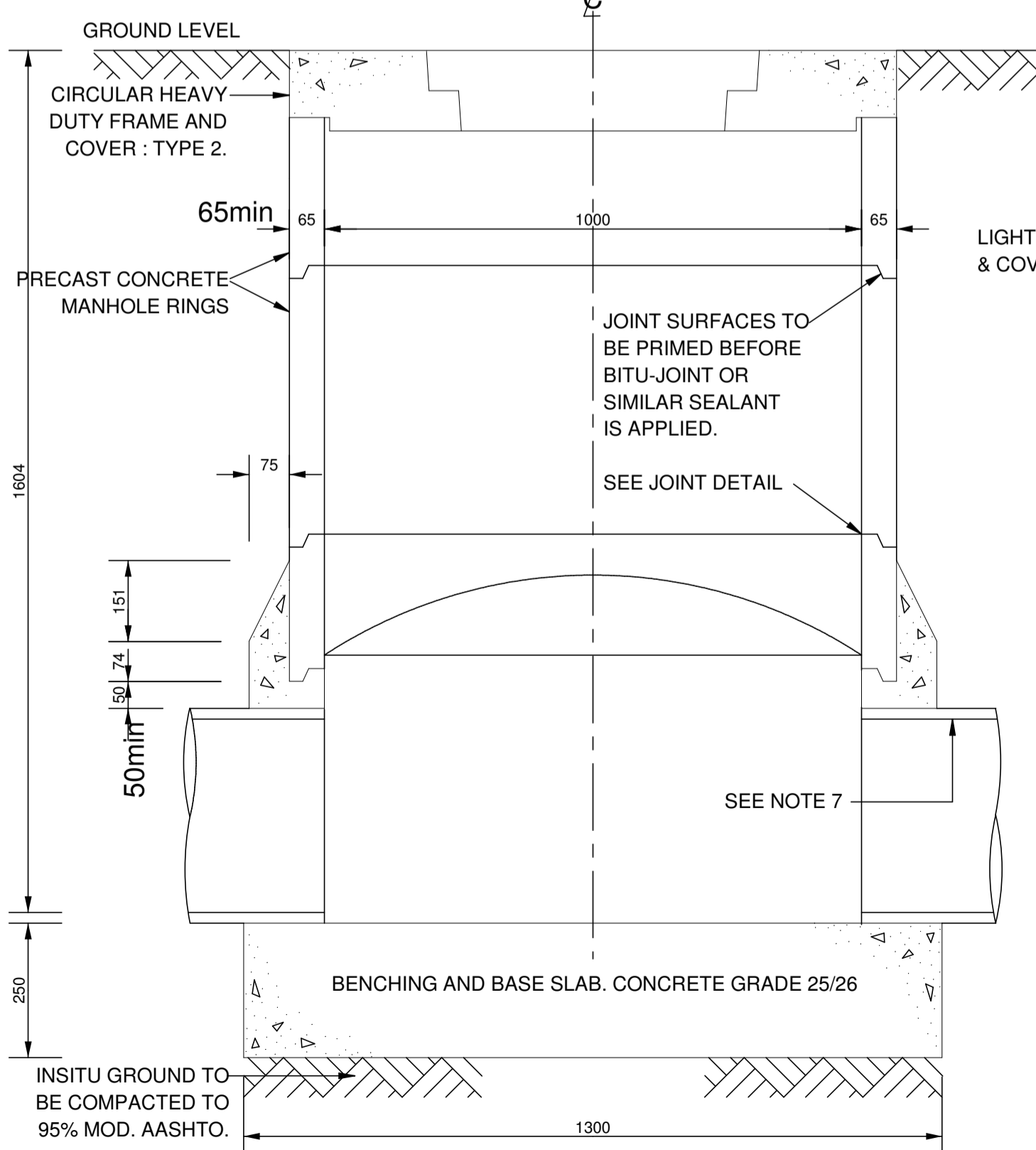
SECTION OF CIRCULAR LIGHT DUTY MH FRAME



SECTION OF HEAVY DUTY SQUARE MANHOLE FRAME



SECTION OF 1000 DIA. MANHOLE



SECTION OF 1000 DIA. MANHOLE

NOTES:

- A. GENERAL
- ALL PRECAST CONCRETE MANHOLE COMPONENTS TO COMPLY WITH THE REQUIREMENTS OF S.A.B.S.1294 (WHERE APPLICABLE)
 - LENGTHS OF INDIVIDUAL WALL UNITS ARE TO VARY IN MULTIPLES OF 250mm.
 - HEAVY DUTY CAST IRON COVERS AND FRAMES TO DRG.NO.DMW1281/A ARE TO BE USED ON MANHOLES UNDER VEHICULAR TRAFFIC.
 - FOR DETAILS OF STEEL REINFORCEMENT TO MANHOLE COVERS, COVER SLABS AND FRAMES - SEE STANDARD PRECAST DETAILS LISTED ABOVE.
- B. STORMWATER MANHOLE
- DIMENSION D VARIES WITH THE DIAMETER OF THE PIPES. DIMENSION D SHALL BE TO A POINT 50mm ABOVE THE HIGHEST CROWN OF THE PIPES.
 - RENDERING FOR MANHOLE BENCHING SHALL CONSIST OF 1 PART CEMENT TO 3 PARTS SAND THOROUGHLY MIXED AND APPLIED TO CONCRETE SURFACES WHILE THE LATTER ARE STILL GREEN. RENDERING SHALL BE AT LEAST 20mm THICK.
 - THE LENGTH OF PIPE BUILT INTO THE MANHOLE SHALL NOT EXCEED 2.5m.

C. SEWER MANHOLE:-

- THIS DRAWING TO BE READ IN CONJUNCTION WITH DRAWING 38574.
- RENDERING FOR MANHOLE BENCHING SHALL CONSIST OF 1 PART H.A.C. TO 2 PARTS SAND THOROUGHLY MIXED AND APPLIED TO CONCRETE SURFACES WHILE THE LATTER ARE STILL GREEN. RENDERING SHALL BE AT LEAST 20mm THICK.
- ALL PIPES BUILT INTO MANHOLES SHALL NOT EXCEED 1.0m IN LENGTH, AND AND THE ADJOINING PIPE SHALL NOT EXCEED 2.0m IN LENGTH.
- EVERY U.P.V.C. PIPE BUILT INTO A MANHOLE SHALL HAVE CLEAN DRY SAND (TO S.A.B.S. 1083 TABLE 1.) GLUED TO ITS OUTSIDE AS RECOMMENDED BY PIPE MANUFACTURER USING SPECIAL PVC CEMENT (HENKEL S.A. PTY. LTD. TANGIT OR SIMILAR) TO ENSURE GOOD ADHESION TO BASE CONCRETE.
- IN LOCATIONS DEFINED BY THE ENGINEER AS SUBJECT TO FLOODING, C.I. MANHOLE COVERS AND JOINTS SEALED WITH BOSTIK BUTYL TAPE OR SIMILAR, SHALL BE USED.

PRECAST PRODUCT DETAILS	
RING MANHOLES	Drig. No. 38850
CIRCULAR FRAMES AND COVER SLAB	Drig. No. 38851
SQUARE MANHOLE FRAMES	Drig. No. 38852
MANHOLE COVERS	Drig. No. 38853

Revision	Date	Description

NOTE: No construction work to commence until land and servitude acquisitions have been completed.		
Acquisitions completed		NORTH POINT

UNDERGROUND SERVICES CHECKED		
SERVICE	DATE	SIGNATURE
SEWERS		
WATER MAINS		
C.P.P. CABLES		
ELECTRIC CABLES		
T.E.A.R. CABLES		
E.S.C. CABLES		
OIL PIPE LINE		

NOTE: City underground services affected by new construction work are shown. Care must be taken during excavation for road foundations, trenches etc. to avoid damage to underground services such as sewers, drains, cables, water mains and connections. Wherever possible these must be located before work proceeds.

Contract No.	
Project Title	

STANDARD DRAWING

RING MANHOLES

Scales	DATE OF ISSUE
1:10	FEBRUARY 1990
Designed	Date
Checked	Drawn
Manager RD(N)	
Director - Roads	
R.A.Moore	Executive Director

Drawing No	38570	Sheet of	Sheets
------------	-------	----------	--------