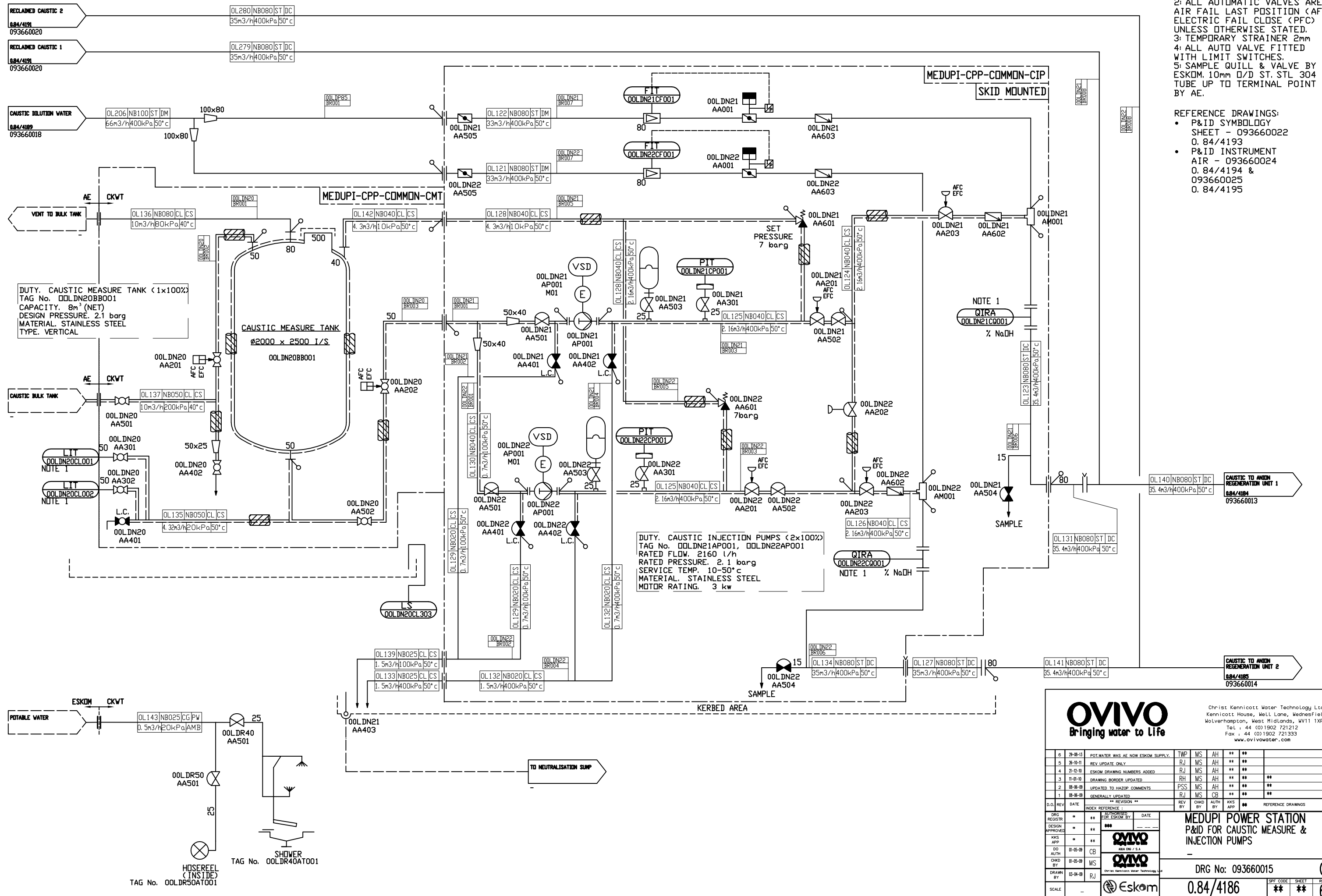



NOTE:  
 1: ALL INSTRUMENTS SCOPE OF SUPPLY SEE LOSS DIAGRAMS.  
 2: ALL AUTOMATIC VALVES ARE AIR FAIL LAST POSITION (AFL) ELECTRIC FAIL CLOSE (EFC) UNLESS OTHERWISE STATED.  
 3: TEMPORARY STRAINER 2mm  
 4: ALL AUTO VALVE FITTED WITH LIMIT SWITCHES.  
 5: SAMPLE QUILL & VALVE BY ESKOM. 10mm O/D ST. STL 304 TUBE UP TO TERMINAL POINT BY AE.

REFERENCE DRAWINGS:  
 • P&ID SYMBOLY SHEET - 093660022 0.84/4193  
 • P&ID INSTRUMENT AIR - 093660024 0.84/4194 & 093660025 0.84/4195





Bringing water to Life

Christ Kennicott Water Technology Ltd  
 Kennicott House, Wel Lane, Wednesfield,  
 Wolverhampton, West Midlands, WV11 1XR  
 Tel : 44 (0)1902 721212  
 Fax : 44 (0)1902 721333  
 www.ovivowater.com

NO.	DATE	DESCRIPTION	BY	CHKD	APP	REF
6	28-08-13	POT. WATER WAS AE. NOW ESKOM SUPPLY.	TWP	MS	AH	** **
5	26-10-11	REV. UPDATE ONLY	RJ	MS	AH	** **
4	21-12-10	ESKOM DRAWING NUMBERS ADDED	RJ	MS	AH	** **
3	11-01-10	DRAWING BORDER UPDATED	RH	MS	AH	** **
2	08-08-09	UPDATED TO HAZOP COMMENTS	PSS	MS	AH	** **
1	08-08-09	GENERALLY UPDATED	RJ	MS	CB	** **

D.O. REV. DATE

DESIGN APPROVED

KKS APP

DO. AUTH



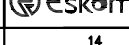
CHKD BY

DRAWN BY

SCALE

INDEX REFERENCE

\*\*\* AUTHORIZED FOR ESKOM BY

REFERENCE DRAWINGS

**MEDUPI POWER STATION**  
**P&ID FOR CAUSTIC MEASURE &**  
**INJECTION PUMPS**

DRG No: 093660015

**0.84/4186**

SPT CODE SHEET REV  
**\*\* \*\* 6**