

PART 4: SITE INFORMATION

Document reference	Title	No of pages
C4	This cover page	1
	Site Information	3
	Total number of pages	

PART 4: SITE INFORMATION

Core clause 11.2(16) states

“Site Information is information which

- describes the Site and its surroundings and
- is in the documents which the Contract Data states it is in.”

In Contract Data, reference has been made to this Part 4 of the contract for the location of Site Information.

1. General description

1.1 Project Background

The Eskom Kusile Power Station is located in Mpumalanga Province, approximately 23 kilometres south-east of Bronkhorstspuit. The coal fired plant consists of six units, each producing 800 Megawatts (MW) with a gross output of 4 800 MW to the National Grid.

Eskom’s objective is to construct and commission a 60 Year Ash Disposal Facility (60 Year ADF) to accommodate ash that will be produced by the power station over its design life of 60 years.

The footprint of the proposed ADF will result in extensive permanent loss of wetlands (both hillslope seeps and channelled valley bottom wetlands). A detailed wetland offset strategy was developed based on the direct and indirect impacts of the ADF construction. In line with this strategy, various interventions are to be constructed and installed in various identified wetland areas.

The scope of works to be executed by the Contractor, as described in this Technical Specification, covers the works within Environmental Management Units A, B, F, G and the Klipfonteinspruit.

This document covers the Site Information that will be applicable to the Contract and are to be adhered to by the *Contractor* in order to meet the Employer’s objectives for this project.

PLEASE NOTE:

1. It is to be noted that access to Environmental Management Unit G may be delayed. 2 weeks’ notice will be given to the *Contractor* when access becomes available.
2. The *Employer* reserves the right to take out the scope for Environmental Management Unit G, after giving notice to the *Contractor*.

1.2 Site Location

The Power Station Site for Kusile Power Station is situated approximately in the area between Witbank and Bronkhorstspuit, between the N4 and N12 freeways. Figure 1 below shows the Power Station Site.



Figure 1: Locality Map of the Victor Khanye Municipality Area Between N4 and N12

The Working Area is located within Mpumalanga Province, approximately 23 kilometres south-east of Bronkhorstspuit. Figure 2 below shows the location of the interventions to the South (ADF), north-west (EMU A), south-west (EMU B), north-east (EMU F) and south-east (EMU G) of Kusile Power Station.

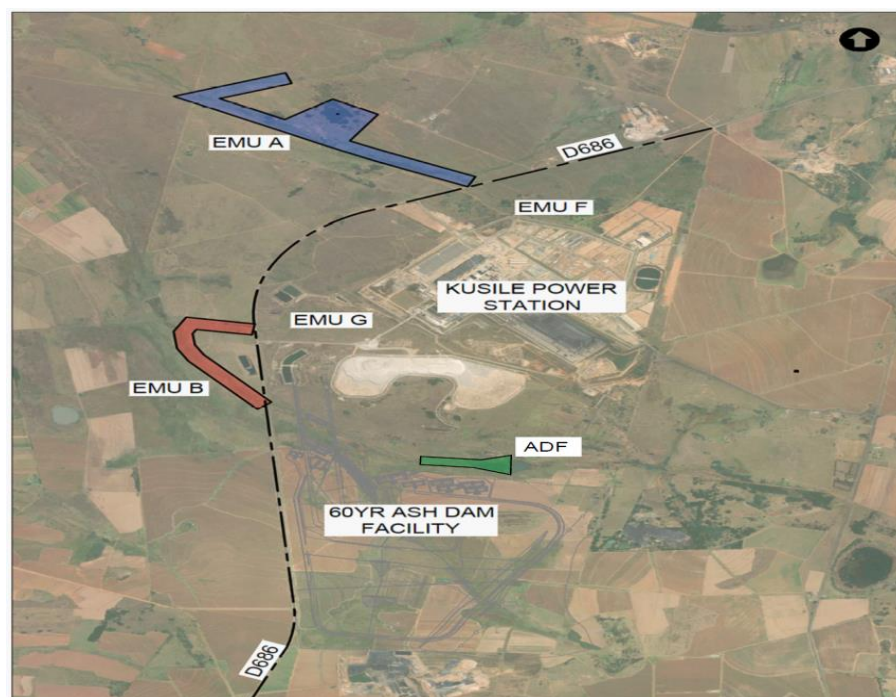


Figure 2: Locality Map of the Working Area Next to Kusile Power Station

1.3 Road Access

The closest national access route roads are the N12 and the N4.

The Project Site is accessed from the existing trunk road that runs from either N4 or N12. Accordingly, great care must be taken in managing the traffic flow through this route in order to minimise disruption and maximise public safety.

The Contractor provides suitable management measures for the regulation of construction traffic, particularly at the junctions of the existing and new roads in the vicinity of the Project Site. These measures are subject to the Project Manager's approval and complies with the specific requirements imposed by the applicable Law or otherwise to ensure public safety.

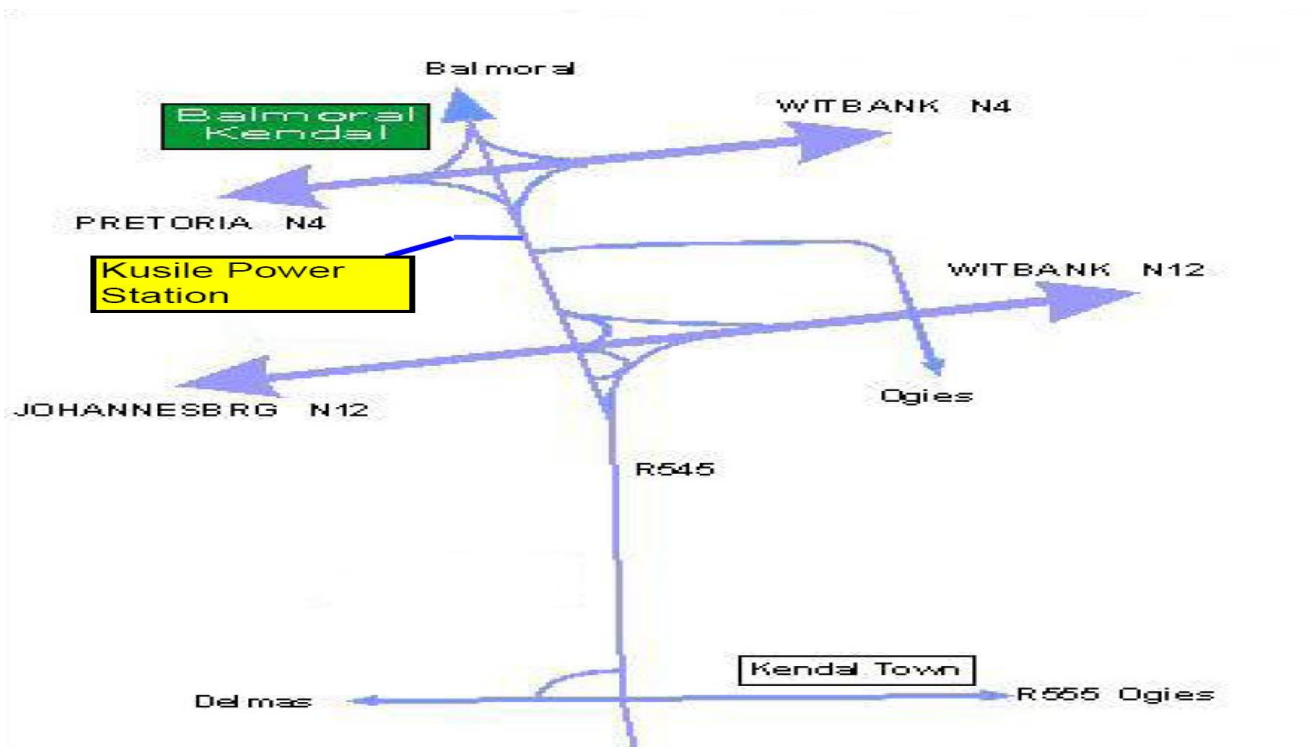


Figure 3: Road Access Map

2. Existing buildings, structures, and plant & machinery on the Site

The Working Area is near the Kusile Power Station. There are limited scattered building structures around the Working Area. The Contractor is invited for the non-compulsory Site visit.

3. Subsoil information

The Site where the Contractor will be executing the activities is wetland area. Construction shall be executed with manual labour.