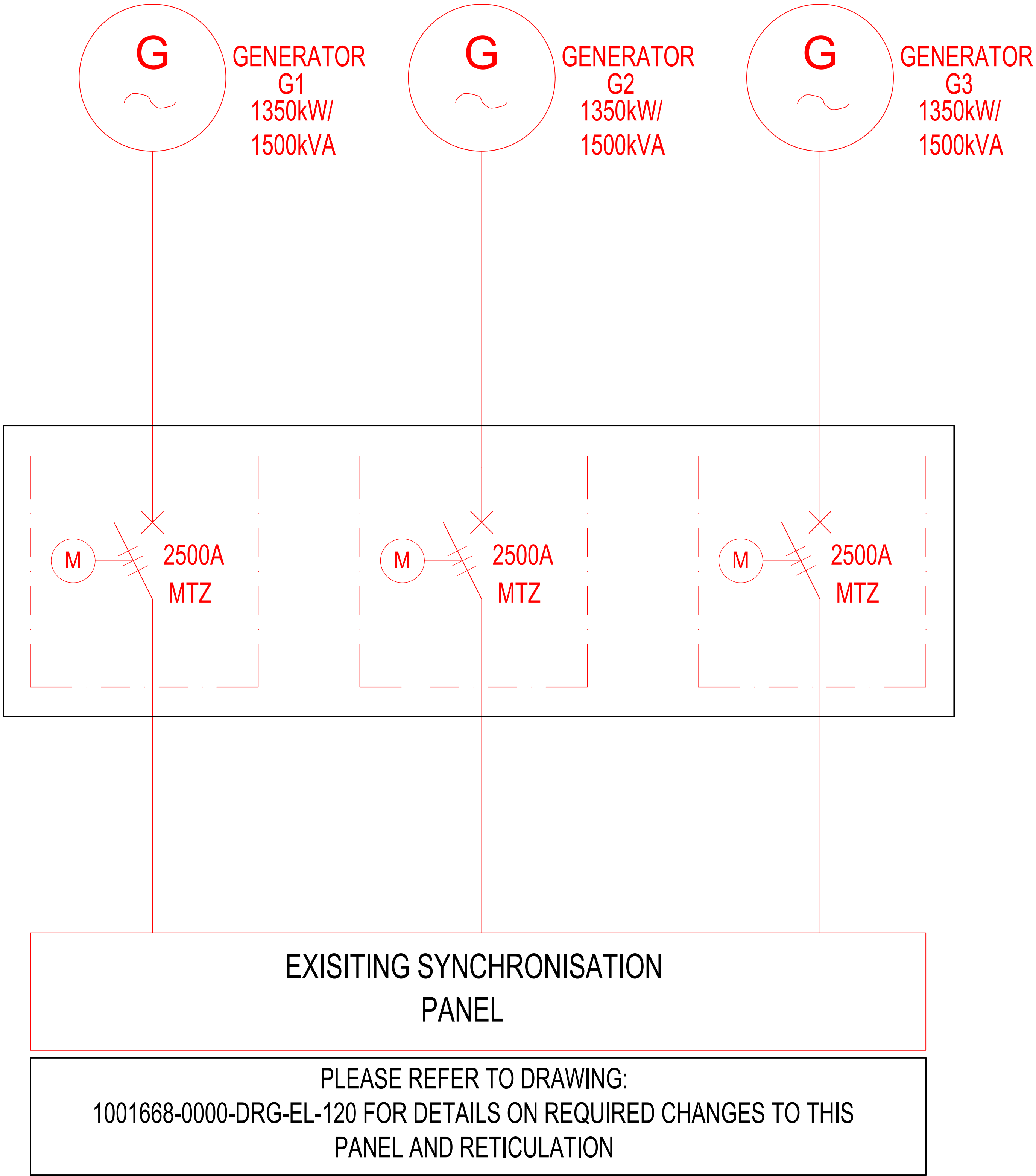
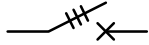




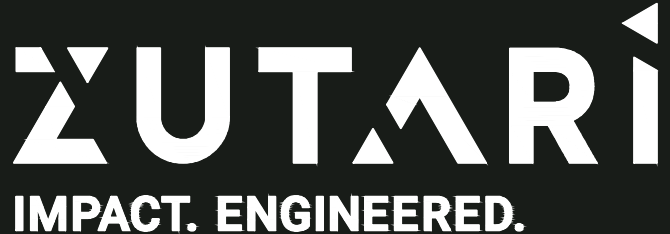
Path: C:\Users\BECO\Downloads\1001668-0000-DRG-EL-120-NEW RETICULATION.DWG
Pct Date: 21/10/2022 11:40:48 am
Office: ZAD1

NEW BREAKERS TO BE PROVIDED
IN THE LOCAL CONTROL PANEL
(SET-MOUNTED) OF EACH
GENERATOR ALONG WITH NEW
GENERATOR CONTROLLER AND
AUXILIARIES TO ALLOW FOR FULL
FINAL-DAY, STAND-ALONE
GENERATOR OPERATION




DISCLAIMER
IF CONSTRUCTION DRAWINGS ARE ISSUED UNSIGNED, THE MASTER
WITH THE ORIGINAL SIGNATURE OF APPROVAL WILL BE HELD AT THE
ZUTARI OFFICE OF THE APPROVER

LEGEND	
	CIRCUIT BREAKER (3-PHASE)
	GENERATOR
	MOTORIZED CIRCUIT BREAKER



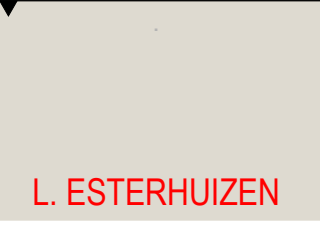
IMPACT. ENGINEERED.

CLIENT



REV	DATE	REVISION DETAILS	APPROVED
A	21-06-22	ISSUED FOR TENDER	L. ESTERHUIZEN
B	21-10-22	NEW GENERATOR INSTALLATION	L. ESTERHUIZEN

SCALE	SIZE	FOR TENDER NOT FOR CONSTRUCTION	
N.T.S	A1		

DRAWN	APPROVED	
N. FISHER		DATE
DESIGNED W.GÖLLNITZ		21-10-22
REVIEWED A. BARNARD		PR. ENG 20130291

PROJECT

SITA BETA
DATA CENTRE

TITLE

ELECTRICAL SERVICES
GENERATOR LAYOUT

DRAWING NUMBER					
PROJECT No.	WBS	TYPE	DISC	NUMBER	REV
1001668-	0000	- DRG -	EL -	122	- B