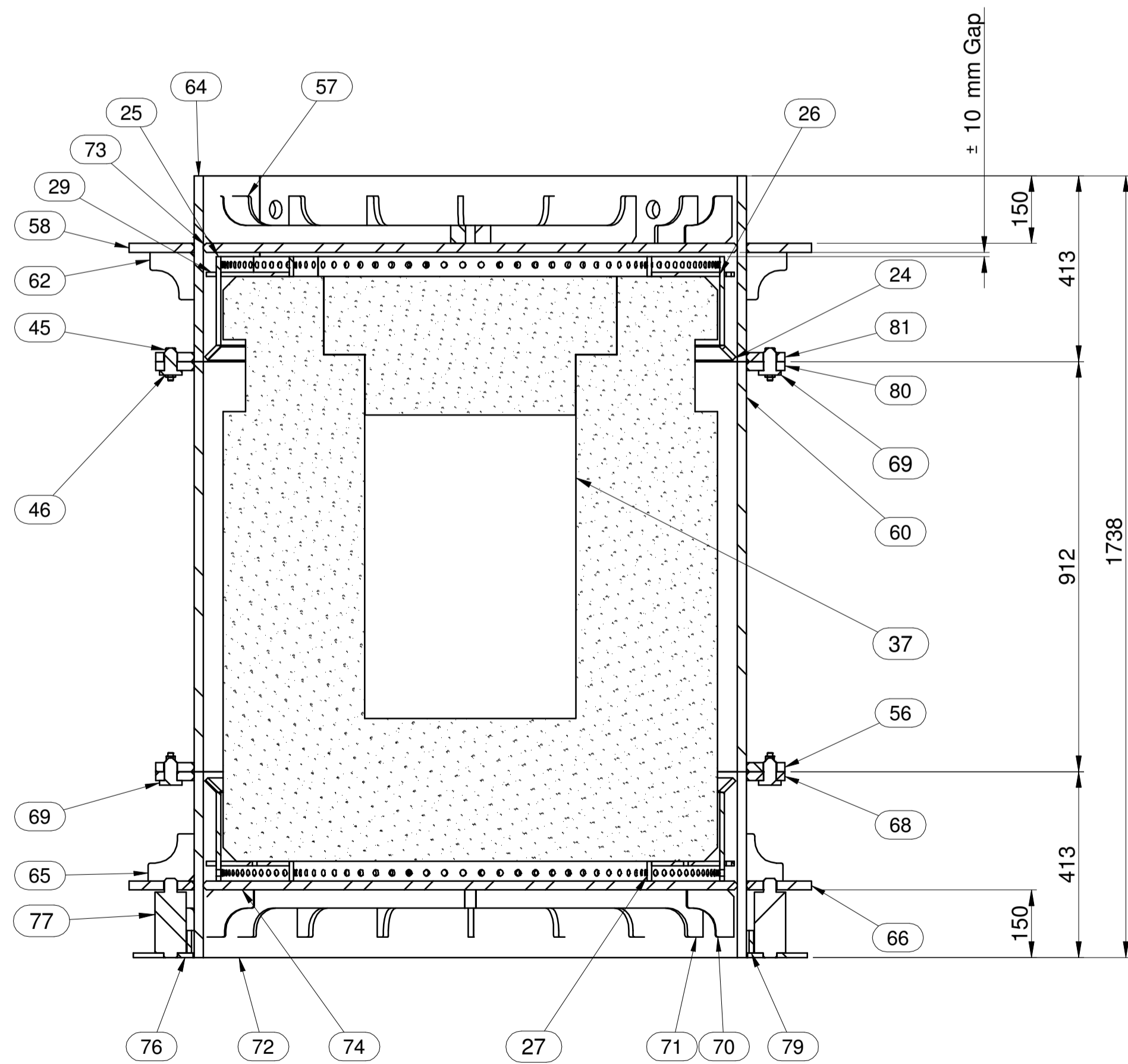
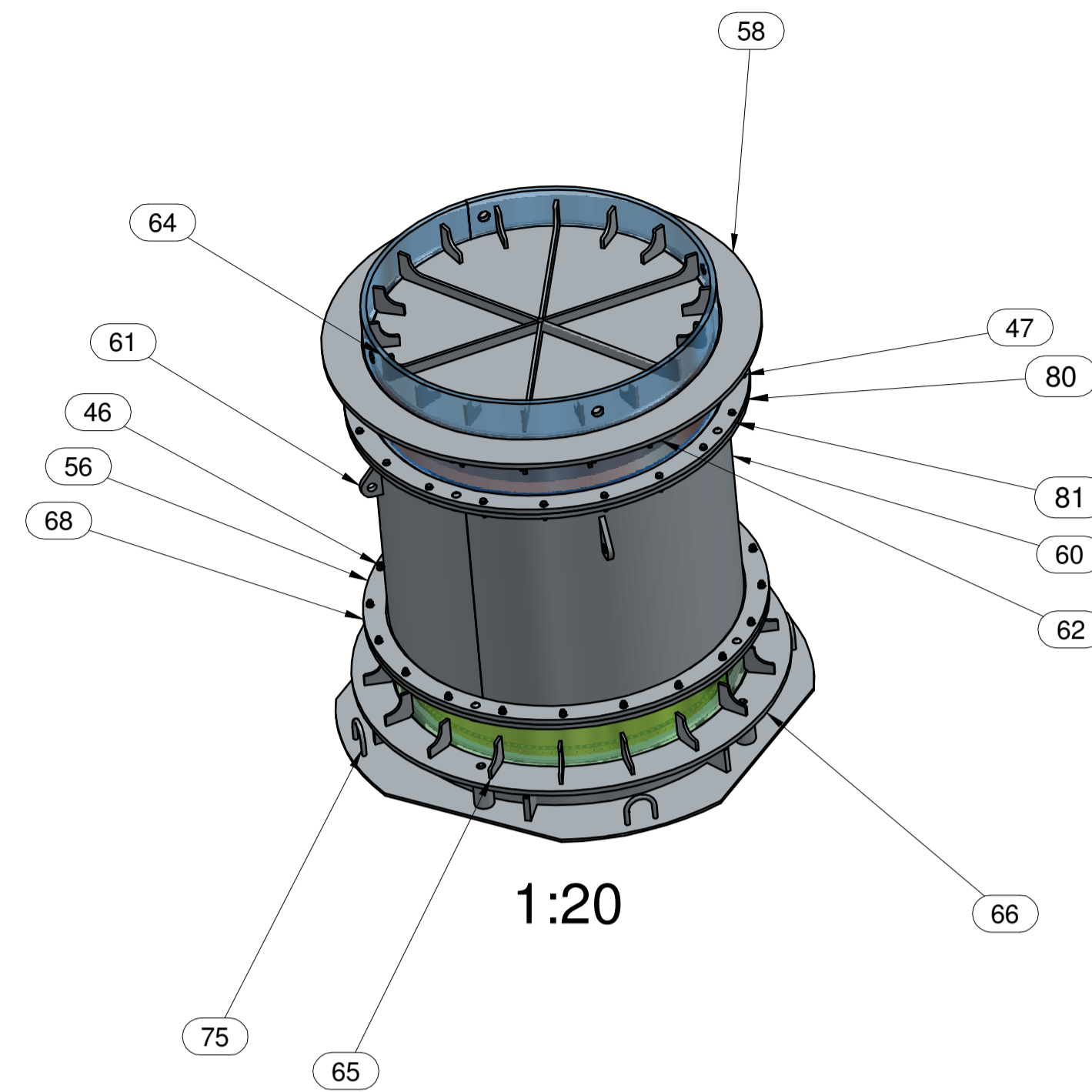
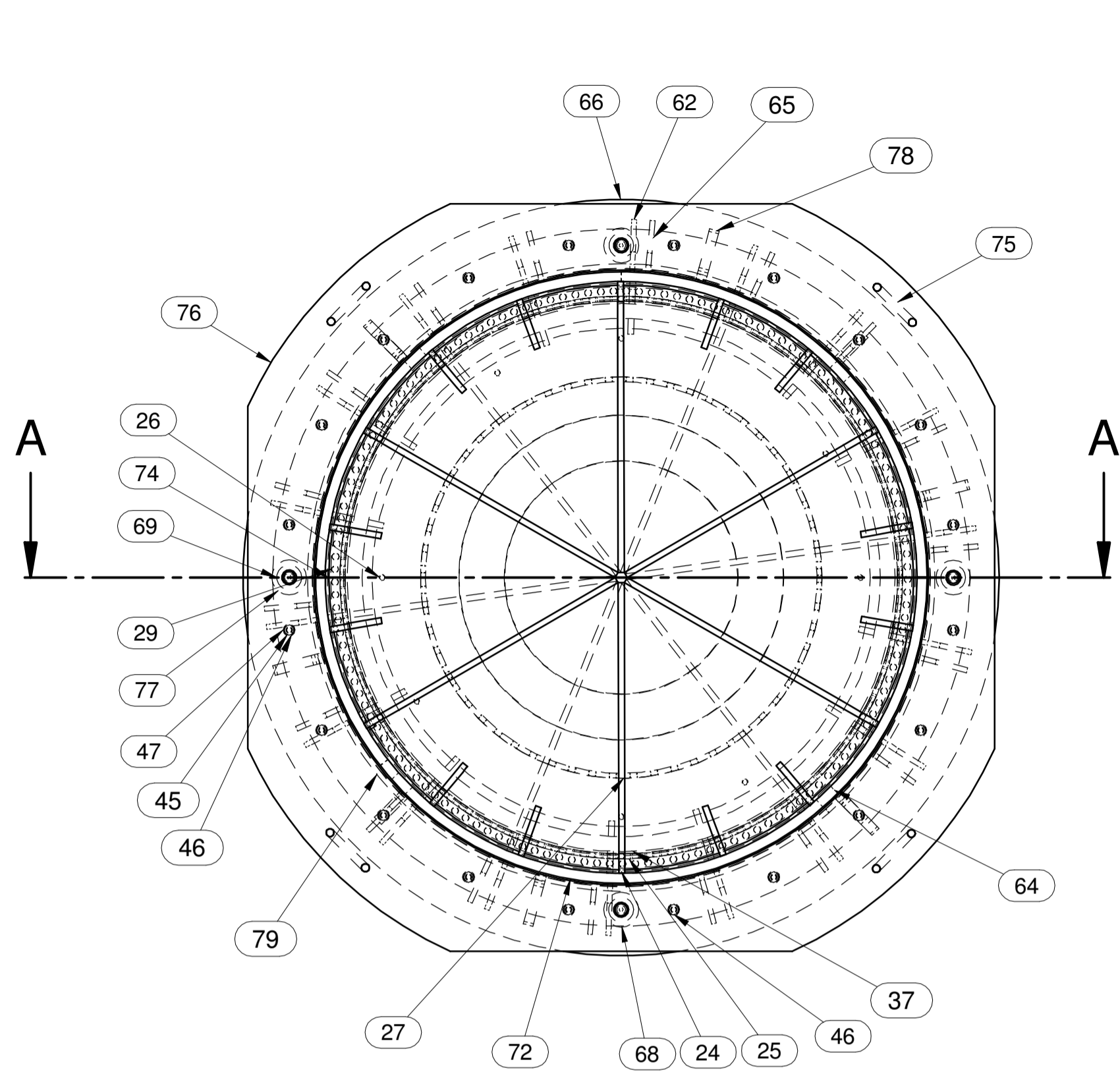


READ THE NOTES AND LEADERS TO PREVENT MISHAPS



SECTION A-A

**IMPORTANT PAINT NOTE:**

- IF THE OVERPACK IS GOING TO STORE UNDERGROUND.
- PAINT MUST WITHSTAND CHIPPING.
- PAINT MUST BE MOISTURE RESISTANT FOR A LONG TIME.

**GENERAL NOTES:**

- BREAK ALL SHARP EDGES AND REMOVE ALL BURRS.
- ALL WELDS TO BE DETERMINE AND SPECIFY BY WELDING ENGINEER FROM MANUFACTURING.
- ALL WELDS TO BE FULL PENETRATION UNLESS OTHERWISE STATED DONE BY EXPERIENCE WELDER.
- VISUAL INSPECTION ON ALL WELDS.
- MAGNETIC PARTICLE AND UT TESTING ON ALL LUGS.
- ALL REMAINING WELDS TO BE DYE PENETRANT TESTED.

**STATUARY NOTE:**

**DOCUMENT NO. HSE-INS-2100 REFERS**

THE CONTAINER ROAD TRANSPORT EQUIPMENT IS CLASSIFIED AS STATUARY EQUIPMENT AND AS SUCH THE FOLLOWING STATUARY REQUIREMENTS ARE APPLICABLE:

- ALL THE MAJOR WELDS SHALL BE DYE PENETRANT TESTED AGAIN AFTER LOAD TEST.
- THE DESIGN CALCULATIONS AND THE WORKING DRAWINGS SHALL BE APPROVED BY THE CHIEF ENGINEER.
- THE LIFTING POINT SHALL BE SUBJECTED TO A LOAD TEST OF 1.1 X 6840 kg BEFORE BEING PLACED IN SERVICE. IF THIS IS DISMANTLED AND RE-ERECTED ELSEWHERE, THE LOAD TEST SHALL BE REPEATED.
- NO REPAIRS AND/OR MODIFICATIONS SHALL BE CARRIED OUT ON THIS EQUIPMENT WITHOUT THE PRIOR NOTIFICATION OF THE ENGINEERING DESIGN OFFICE.

PAINT ACCORDING TO SPECS IN TABLE	
PAINT COLOUR	
GOLDEN YELLOW - NO. B49	SANS 1091 : 2004
DARK GREY NO. G14	
PWR BROWN	
UNDERCOATS FOR PAINT	
SPECIFICATION STANDARD	SANS 681 : 2007
THIS STANDARD SPECIFIES REQUIREMENT FOR TWO GRADES OF UNDERCOAT FOR USE UNDER AIR DRYING PAINTS AND FOR APPLICATION OVER PRIMED STEEL.	
PREPARATION OF STEEL FOR COATING	
SPECIFICATION STANDARD	SANS 10064 : 2005
CONTAINS DETAILED INFORMATION ON THE METHODS AVAILABLE FOR CLEANING AND PREPARING STEEL IN ORDER TO PRODUCE A SURFACE SUITABLE FOR THE APPLICATION OF COATINGS.	

Over_Pack				
Item Number	Description	Material	Mass (Item)	Quantity
1	Bottom Lid.asm		601.764 kg	1
65	Gusset Top	EN 10025-2: 2008 S355JR	0.565 kg	18
66	Outer Ring	EN 10025-2: 2008 S355JR	96.053 kg	1
68	Top Ring	EN 10025-2: 2008 S355JR	53.360 kg	1
69	Locating Pin	EN 10025-2: 2008 S355JR	0.369 kg	4
70	Gusset Bottom	EN 10025-2: 2008 S355JR	0.678 kg	12
71	Gusset Big	EN 10025-2: 2008 S355JR	2.478 kg	6
72	Ring	EN 10025-2: 2008 S355JR	245.477 kg	1
74	Base Plate	EN 10025-2: 2008 S355JR	172.226 kg	1
10	Main Shell.asm		654.350 kg	1
56	Bottom Ring	EN 10025-2: 2008 S355JR	53.302 kg	1
60	Main Shell	EN 10025-2: 2008 S355JR	542.070 kg	1
61	Fastening Lug	EN 10025-2: 2008 S355JR	1.036 kg	4
69	Locating Pin	EN 10025-2: 2008 S355JR	0.369 kg	4
80	Top Ring	EN 10025-2: 2008 S355JR	53.360 kg	1
15	Top_Lid.asm		599.888 kg	1
57	Gusset Top	EN 10025-2: 2008 S355JR	0.678 kg	12
58	Outer Ring	EN 10025-2: 2008 S355JR	96.496 kg	1
62	Gusset Bottom	EN 10025-2: 2008 S355JR	0.565 kg	18
63	Gusset Big	EN 10025-2: 2008 S355JR	2.478 kg	6
64	Ring	EN 10025-2: 2008 S355JR	244.690 kg	1
73	Base Plate	EN 10025-2: 2008 S355JR	172.226 kg	1
81	Bottom Ring	EN 10025-2: 2008 S355JR	53.302 kg	1
23	Bottom Inner_1_New_1.asm		115.057 kg	1
24	Locating Ring	Stainless Steel, 304 L	11.485 kg	1
25	Crumble Ring Outer	Stainless Steel, 304 L	54.141 kg	1
26	Base plate	Stainless Steel, 304 L	36.695 kg	1
27	Crumble Ring Inner	Stainless Steel, 304 L	8.088 kg	1
29	Crumble Ring Base Plate	Stainless Steel, 304 L	4.649 kg	1
30	Top Inner_1_New_1.asm		115.057 kg	1
24	Locating Ring	Stainless Steel, 304 L	11.485 kg	1
25	Crumble Ring Outer	Stainless Steel, 304 L	54.141 kg	1
26	Base plate	Stainless Steel, 304 L	36.695 kg	1
27	Crumble Ring Inner	Stainless Steel, 304 L	8.088 kg	1
29	Crumble Ring Base Plate	Stainless Steel, 304 L	4.649 kg	1
37	Concrete_Con_1_1.par	Concrete NTP	4745.269 kg	1
38	Base_1.asm		105.545 kg	1
75	Handling Lug	EN 10025-2: 2008 S355JR	0.436 kg	4
76	Base Plate	EN 10025-2: 2008 S355JR	62.591 kg	1
77	Locating Pin	EN 10025-2: 2008 S355JR	4.261 kg	4
78	Locating Gusset	EN 10025-2: 2008 S355JR	1.465 kg	6
79	Locating Ring	EN 10025-2: 2008 S355JR	15.376 kg	1
43	M12_B&M_1.asm		0.107 kg	40
45	M12 Bolt	Steel 8.8	0.075 kg	40
46	M12 Nut	Steel 8.8	0.019 kg	40
47	M12 Washer	Steel 8.8	0.007 kg	80

**COPYRIGHT**

THIS DRAWING IS THE PROPERTY OF NECSA. BY SIGNING ACCEPTANCE OF THE DRAWING TRANSMITTAL SHEET THE USER ACKNOWLEDGES THIS.

THE USER UNDERTAKES TO CONSIDER ANY INFORMATION CONTAINED IN THIS DRAWING AS CONFIDENTIAL.

THEREFORE THE USER UNDERTAKES NOT TO COPY, DISCLOSE OR SEND ANY CONFIDENTIAL INFORMATION TO A THIRD PARTY WITHOUT NECSA'S PRIOR WRITTEN CONSENT.

ALL CONFIDENTIAL INFORMATION IN TANGIBLE FORM OF EXPRESSION WHICH HAS BEEN DISCLOSED TO OR THEREAFTER CREATED, WHETHER BY COPY OR REPRODUCTION, SHALL BE AND REMAIN THE PROPERTY OF NECSA.

REV	DESCRIPTION	CHK'D	DATE
0.2	ISSUED COMMENT & APPROVAL	JMK.	2023/03/29
1.0	ISSUED FOR MANUFACTURING	JMK.	2023/03/30

REFERENCE DRAWINGS:

DISCIPLINE	NAME	SIGNED	A	C	N	DATE
CLIENT:						
MECH ENG:						
SHEQ:						
L&SA:						

INDICTE : A - APPROVAED C - COMMENT N- NOTED

APPROVED BY PROFESSIONAL ENGINEER

ORIGINAL SCALE: AS SHOWN ON VIEW

DRAWN: jank

CHECKED: [Signature]

DATE: 2023/03/31



PROJECT: OVERPACK PECRON CONTAINER

TITLE: OVERPACK ASSY

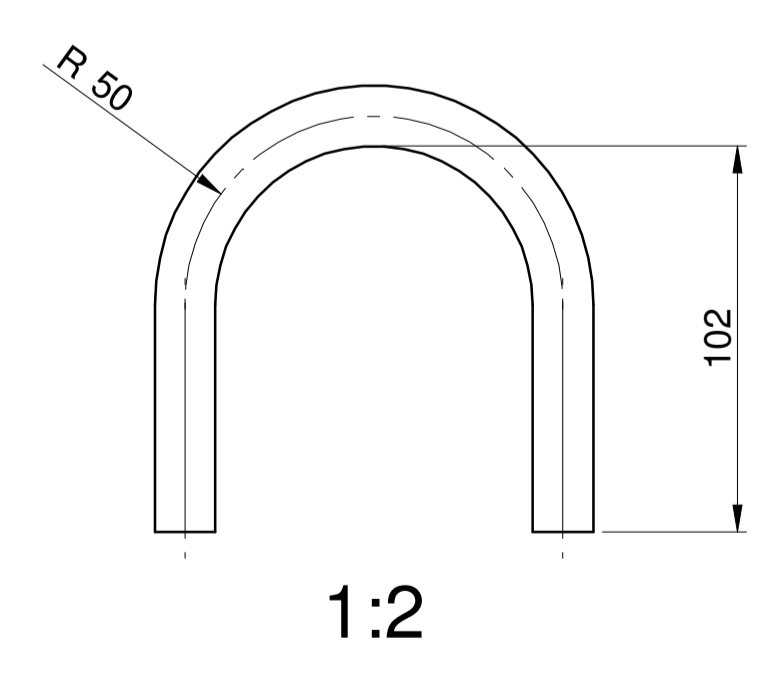
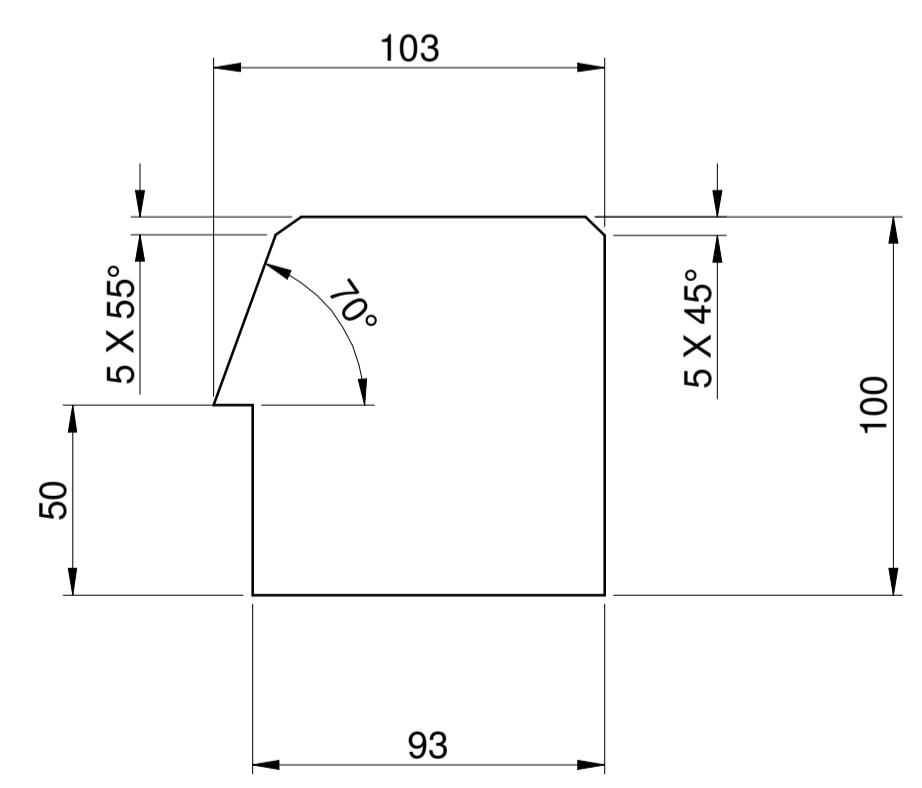
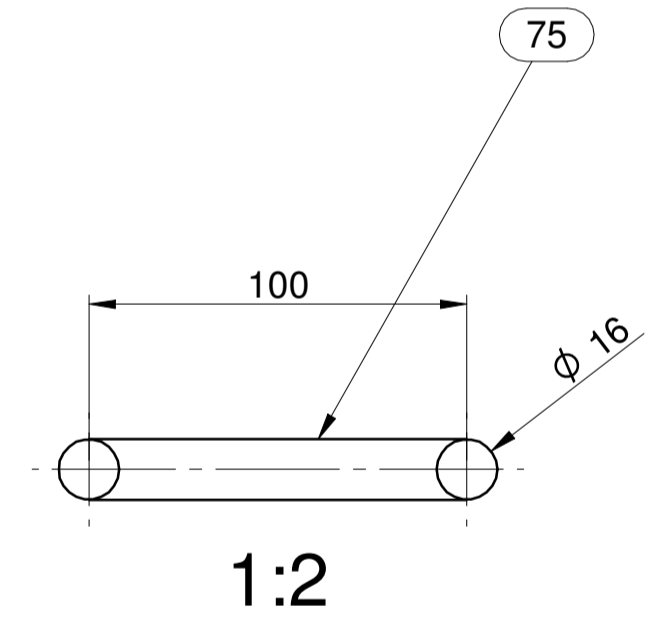
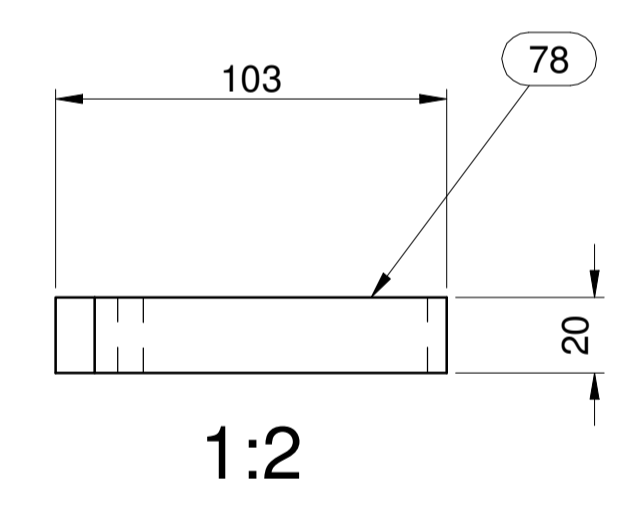
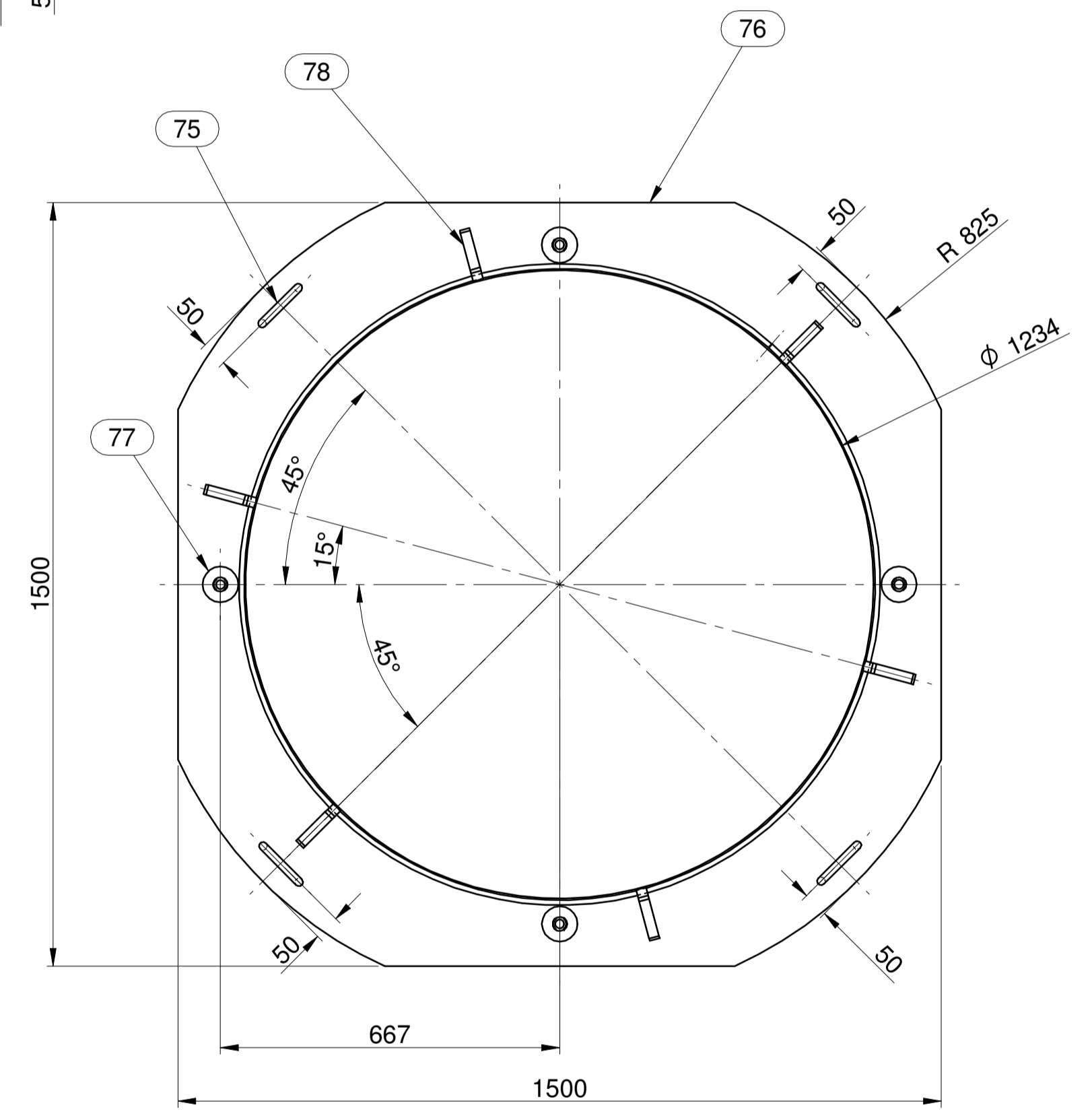
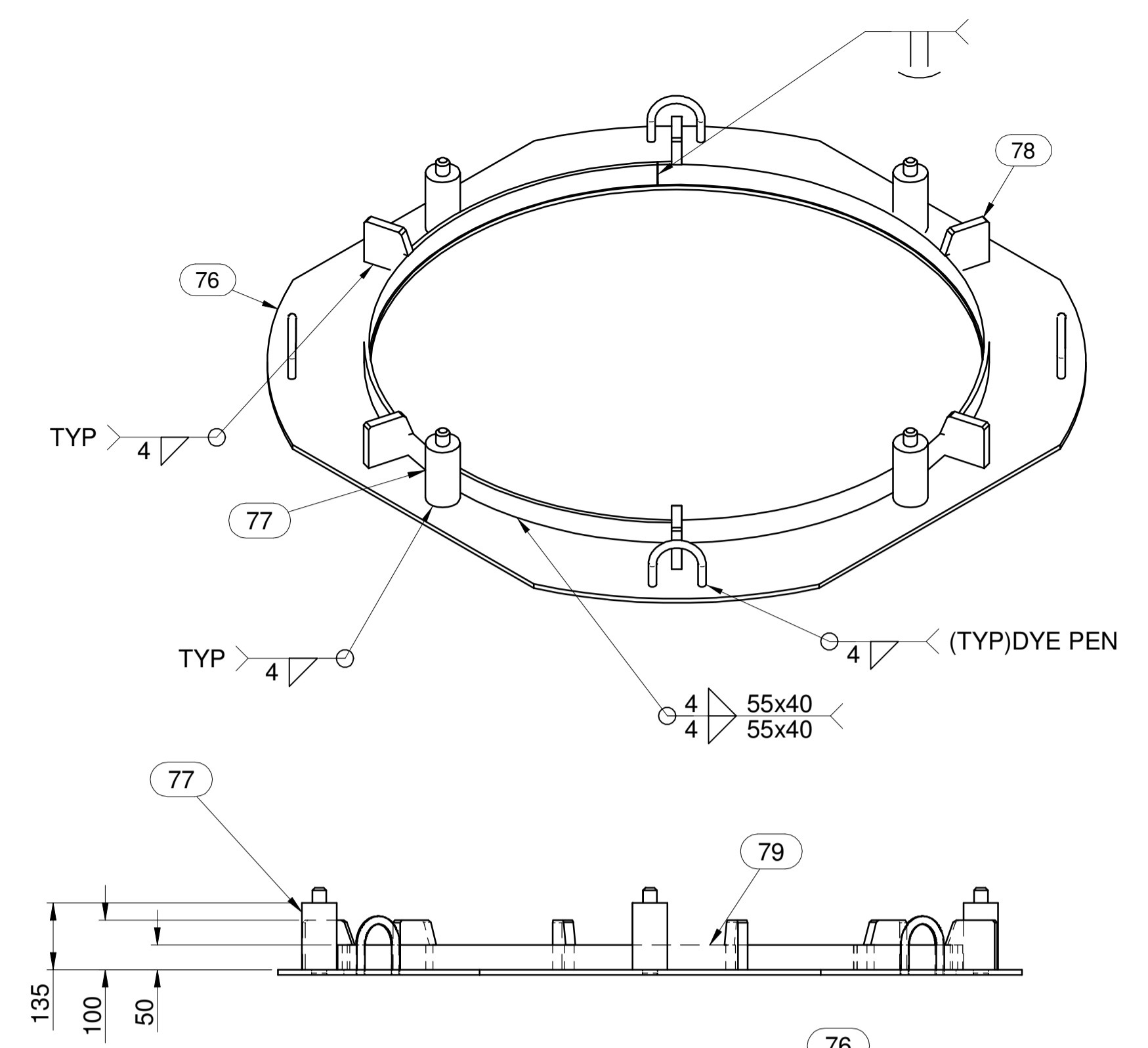
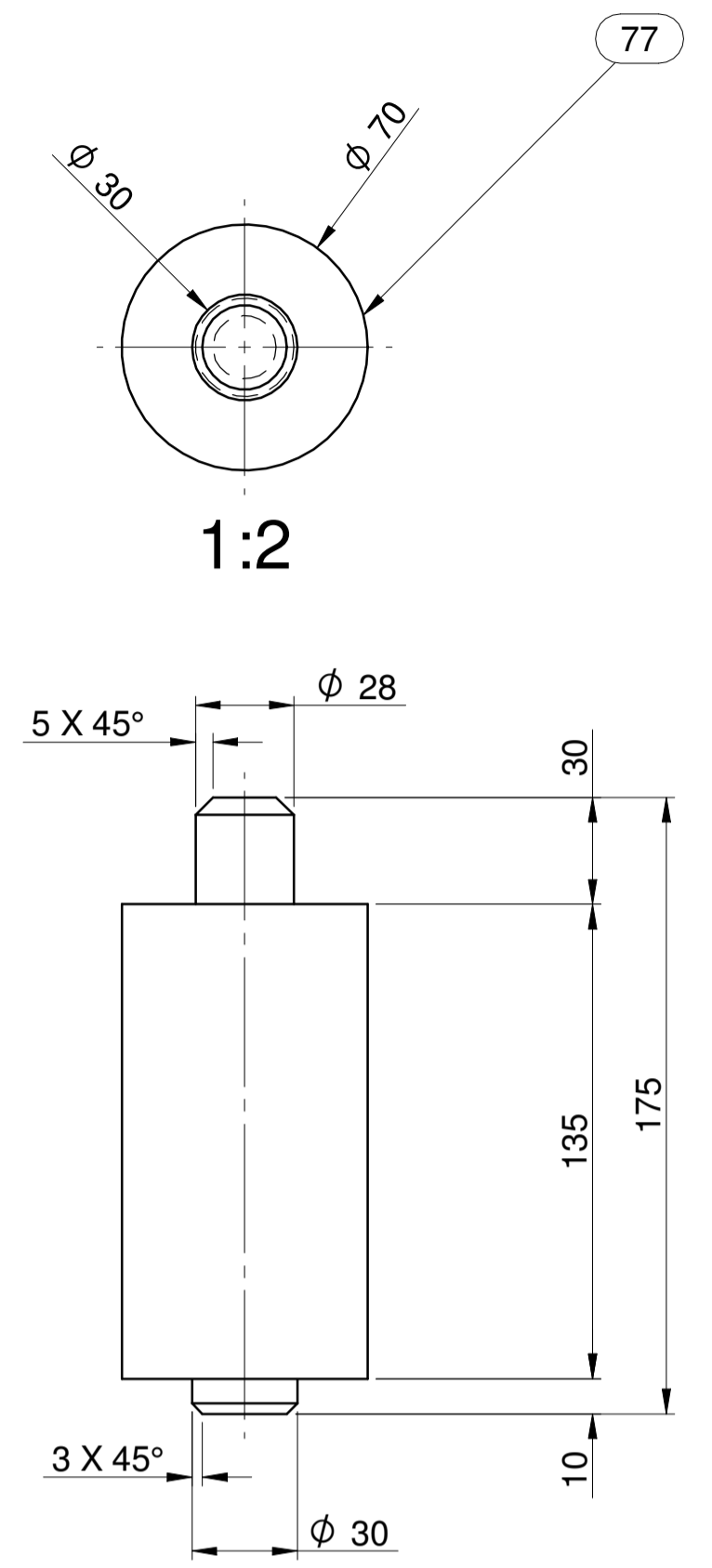
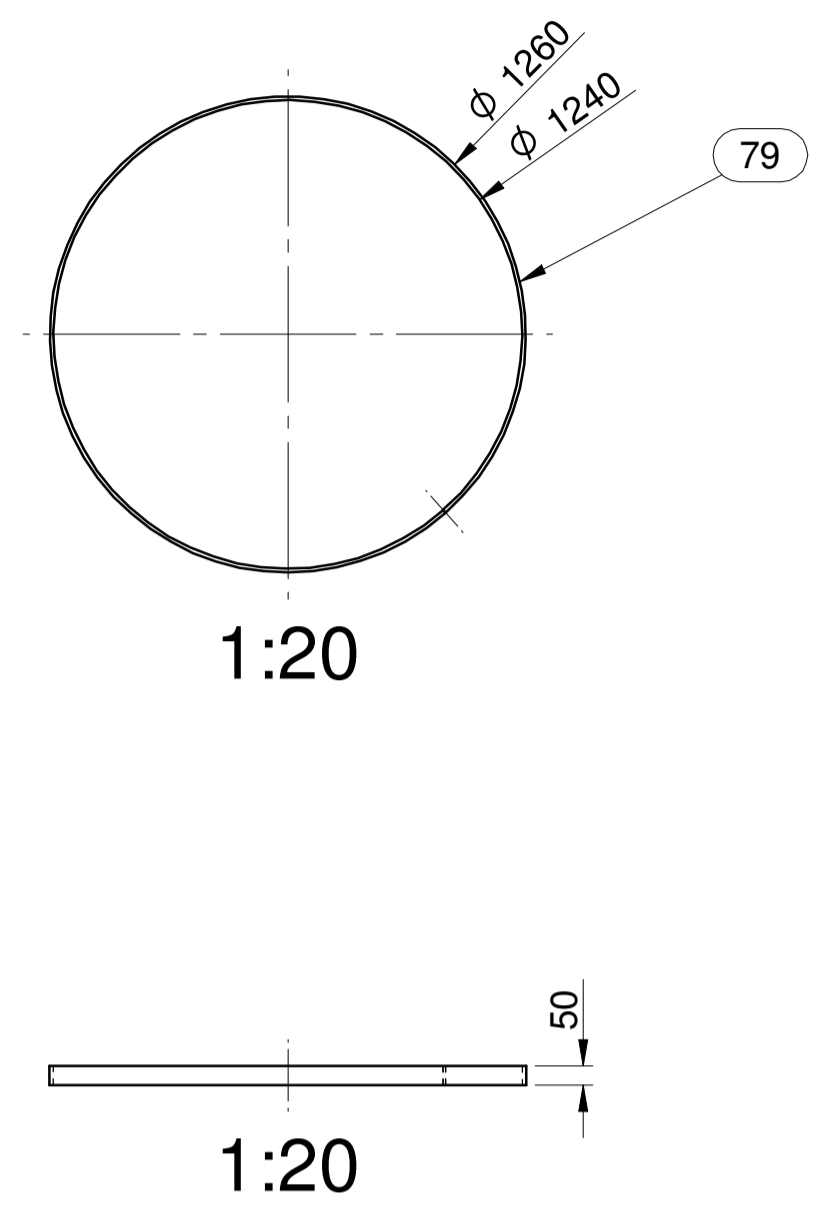
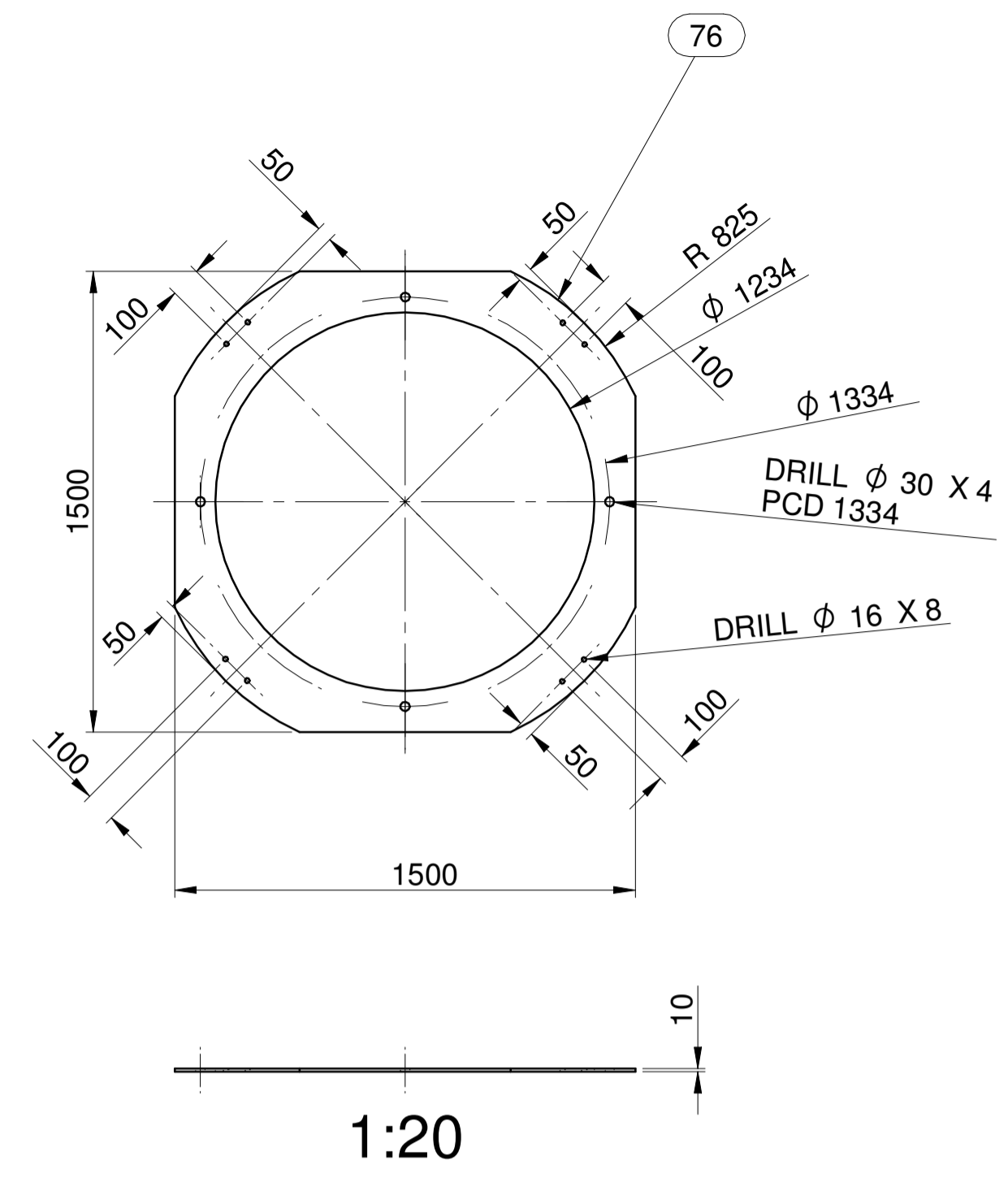
LAST UPDATE: 2023/03/31

DRG. NO: NNDD-IP2TRANS-M-115\_R1 SHT 1 OF 7

REVISION: A1

CIVIL

READ THE NOTES AND LEADERS TO PREVENT MISHAPS



- GENERAL NOTES:**
- BREAK ALL SHARP EDGES AND REMOVE ALL BURRS.
  - ALL WELDS TO BE DETERMINE AND SPECIFY BY WELDING ENGINEER FROM MANUFACTURING.
  - ALL WELDS TO BE FULL PENETRATION UNLESS OTHERWISE STATED DONE BY EXPERIENCE WELDER.
  - VISUAL INSPECTION ON ALL WELDS.
  - MAGNETIC PARTICLE AND UT TESTING ON ALL LUGS.
  - ALL REMAINING WELDS TO BE DYE PENETRANT TESTED.

Over_Pack				
Item Number	Description	Material	Mass (Item)	Quantity
38	Base_1.asm		105.545 kg	1
75	Handling Lug	EN 10025-2: 2008 S355JR	0.436 kg	4
76	Base Plate	EN 10025-2: 2008 S355JR	62.591 kg	1
77	Locating Pin	EN 10025-2: 2008 S355JR	4.261 kg	4
78	Locating Gusset	EN 10025-2: 2008 S355JR	1.465 kg	6
79	Locating Ring	EN 10025-2: 2008 S355JR	15.376 kg	1

**COPYRIGHT**  
 THIS DRAWING IS THE PROPERTY OF NECSA. BY SIGNING ACCEPTANCE OF THE DRAWING TRANSMITTAL SHEET THE USER ACKNOWLEDGES THIS.  
 THE USER UNDERTAKES TO CONSIDER ANY INFORMATION CONTAINED IN THIS DRAWING AS CONFIDENTIAL.  
 THEREFORE THE USER UNDERTAKES NOT TO COPY, DISCLOSE OR SEND ANY CONFIDENTIAL INFORMATION TO A THIRD PARTY WITHOUT NECSA'S PRIOR WRITTEN CONSENT.  
 ALL CONFIDENTIAL INFORMATION IN TANGIBLE FORM OF EXPRESSION WHICH HAS BEEN DISCLOSED TO OR THEREAFTER CREATED, WHETHER BY COPY OR REPRODUCTION, SHALL BE AND REMAIN THE PROPERTY OF NECSA.

REV	DESCRIPTION	CHK'D	DATE
0.2	ISSUED COMMENT & APPROVAL	JMK.	2023/03/29
1.0	ISSUED FOR MANUFACTURING	JMK.	2023/03/30

DISCIPLINE	NAME	SIGNED	A C N	DATE
CLIENT :				
MECH ENG :				
SHEQ :				
L&SA :				

APPROVED BY PROFESSIONAL ENGINEER  
  
 2023/03/31  
 DATE

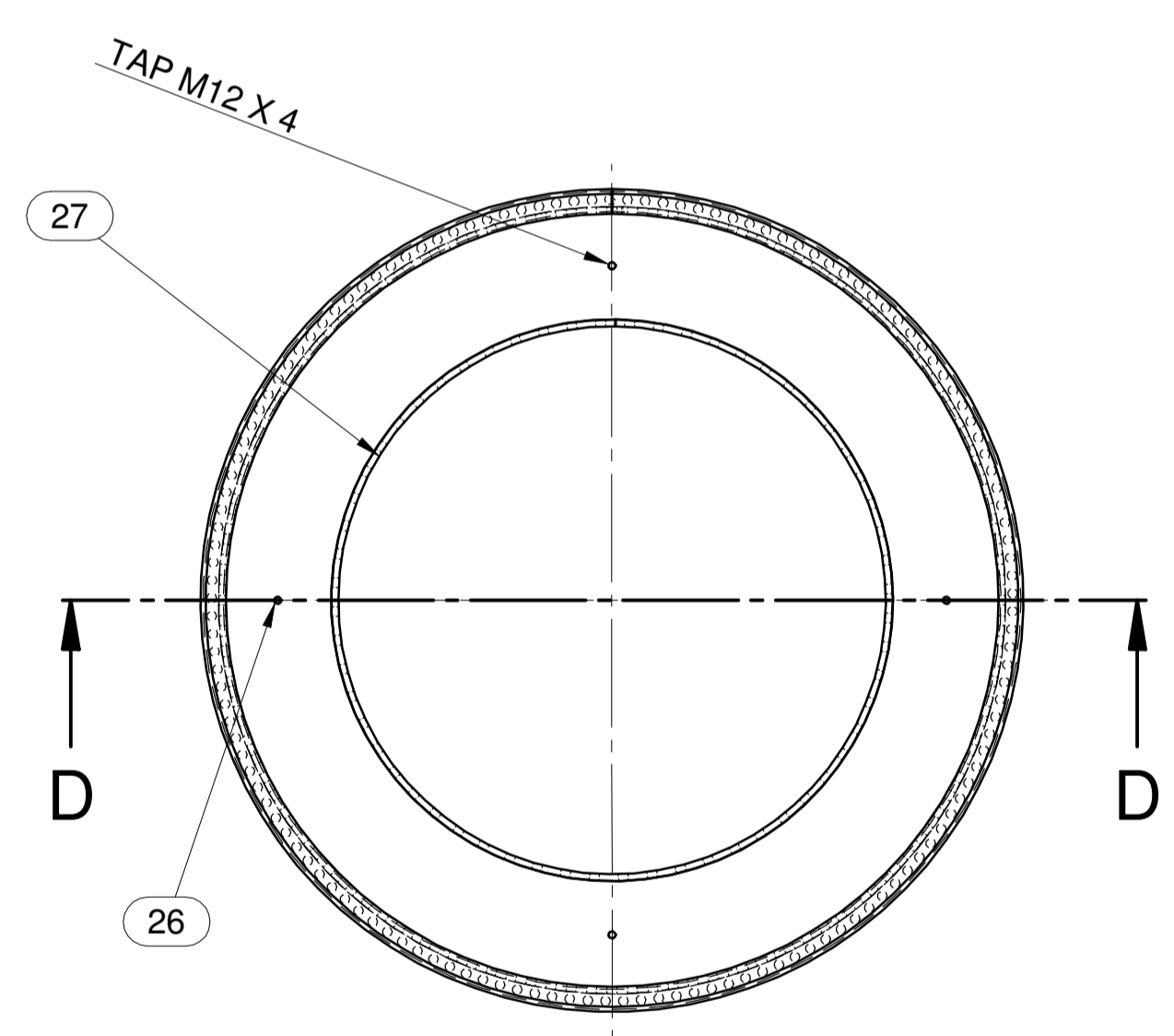
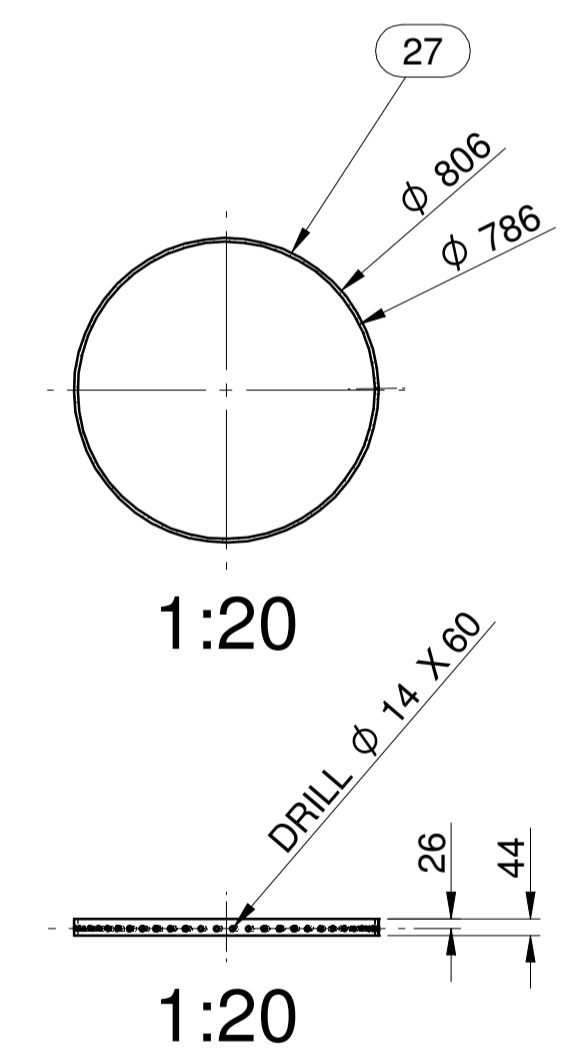
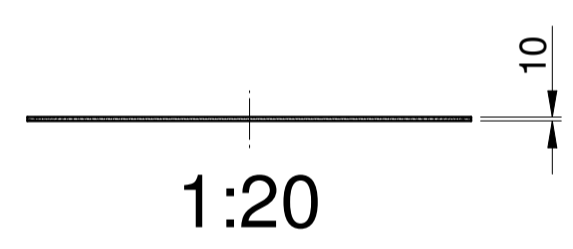
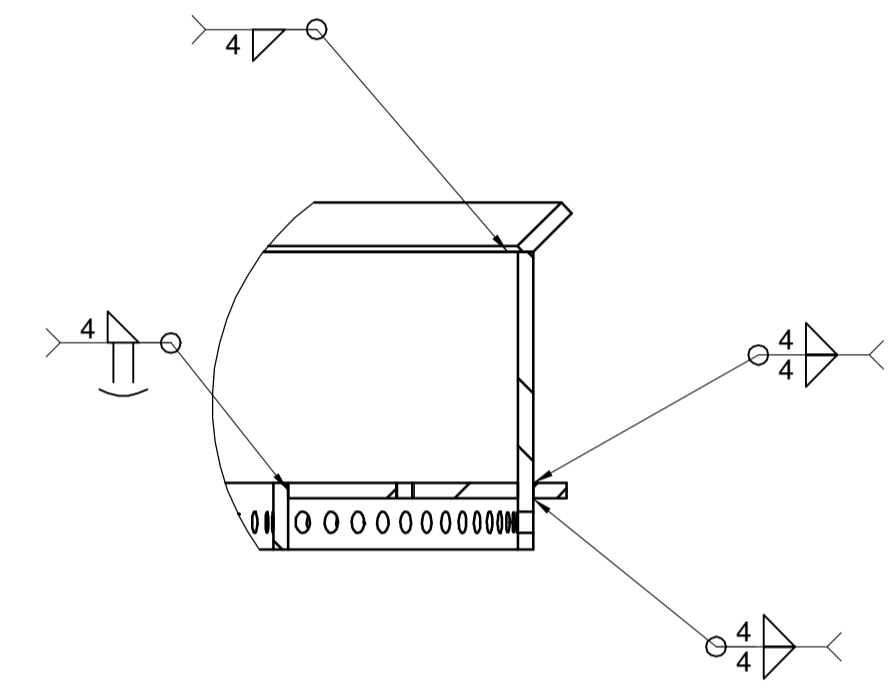
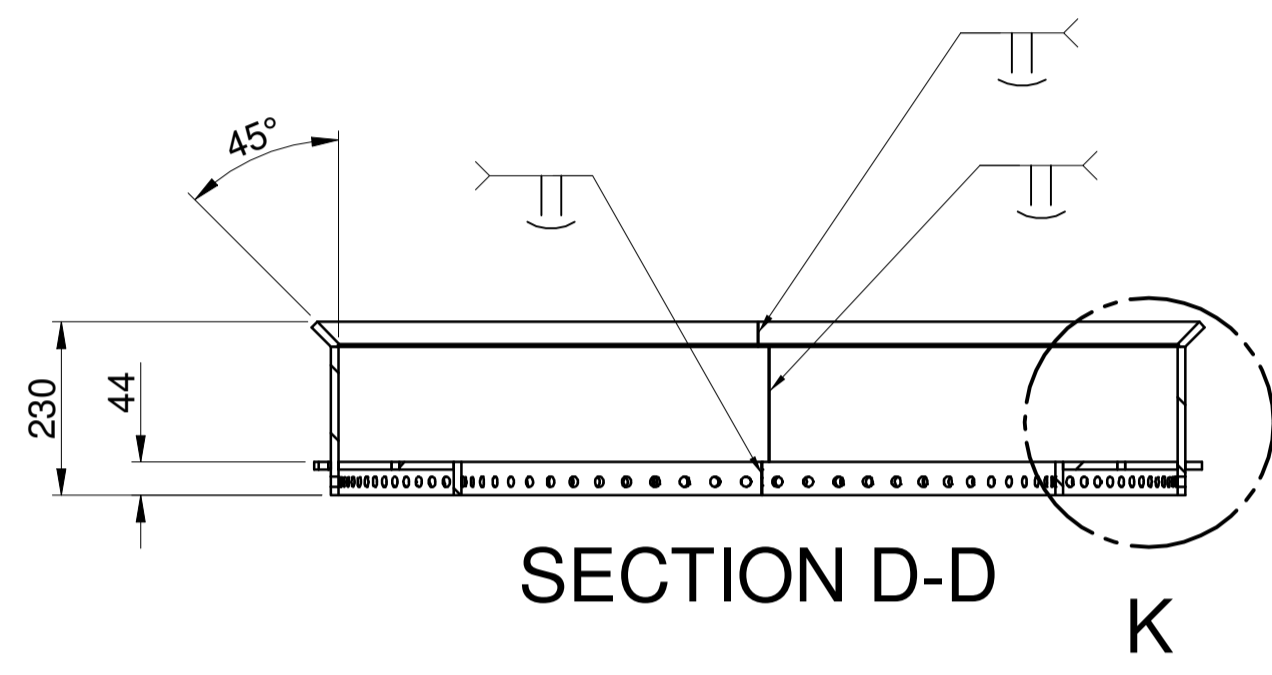
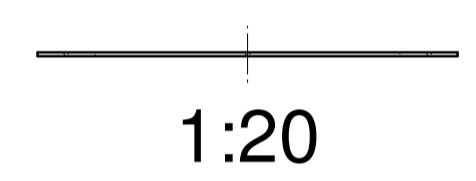
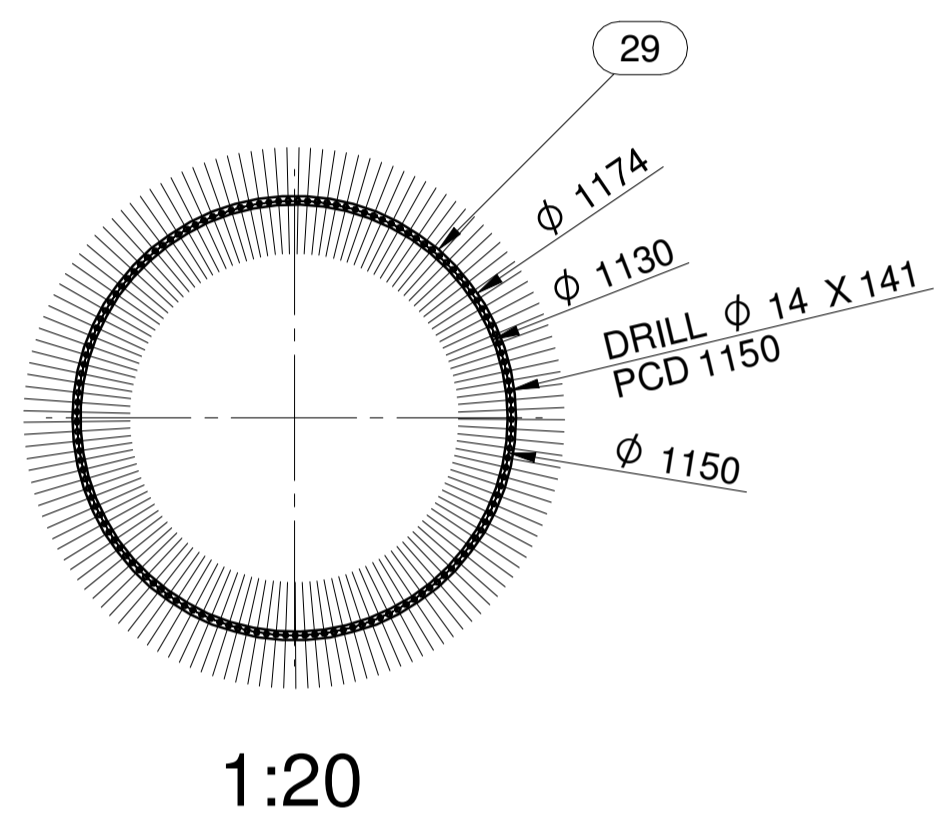
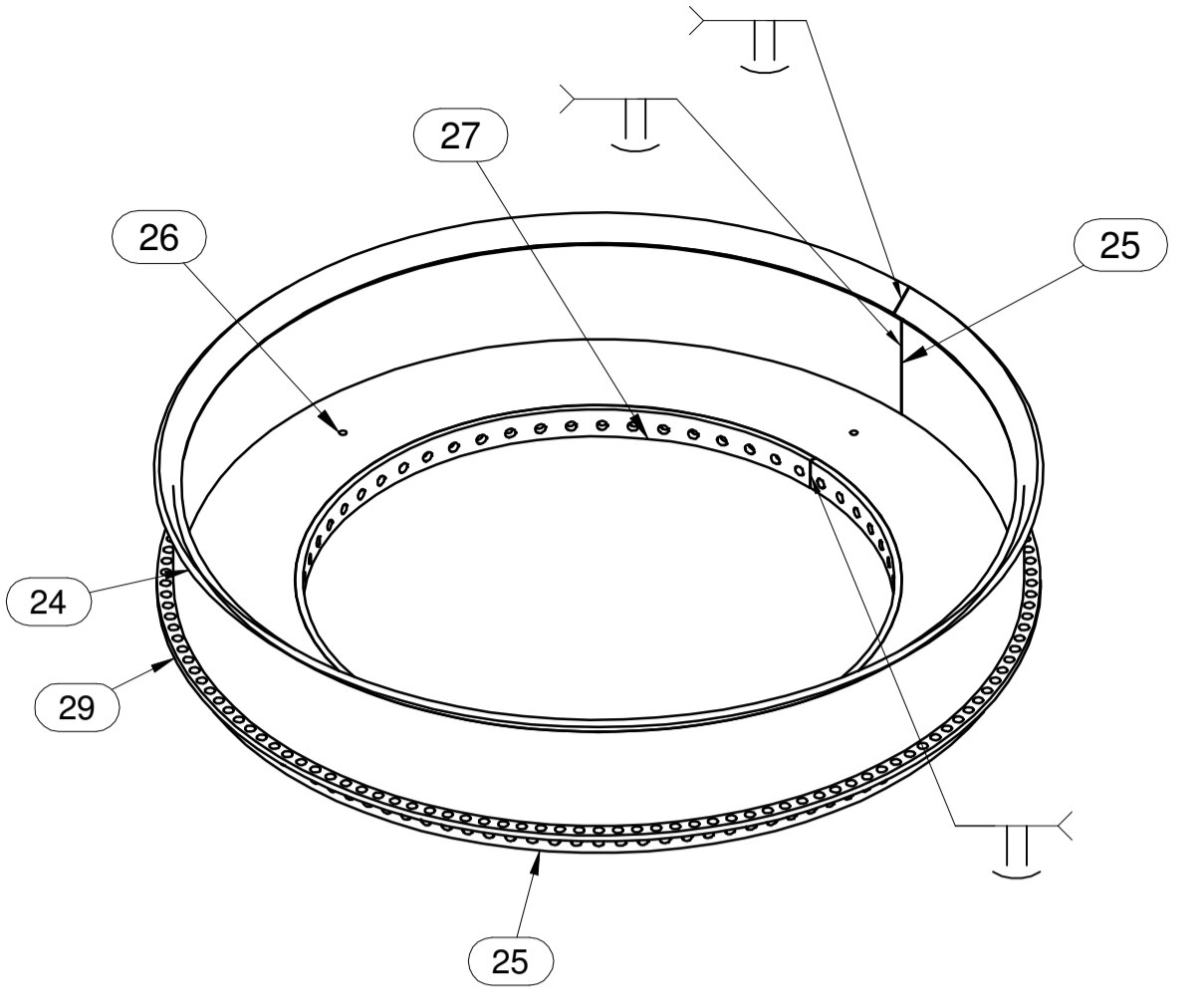
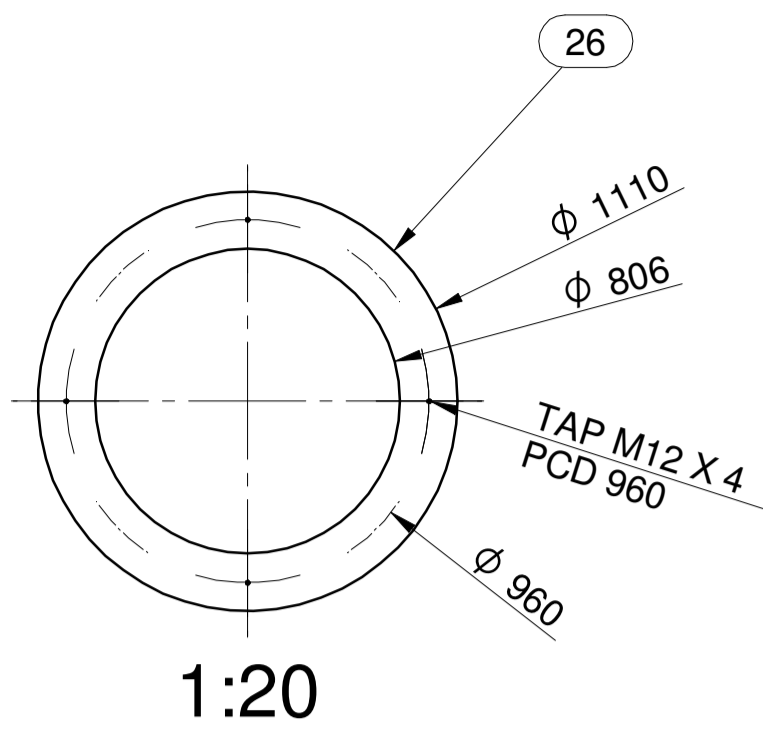
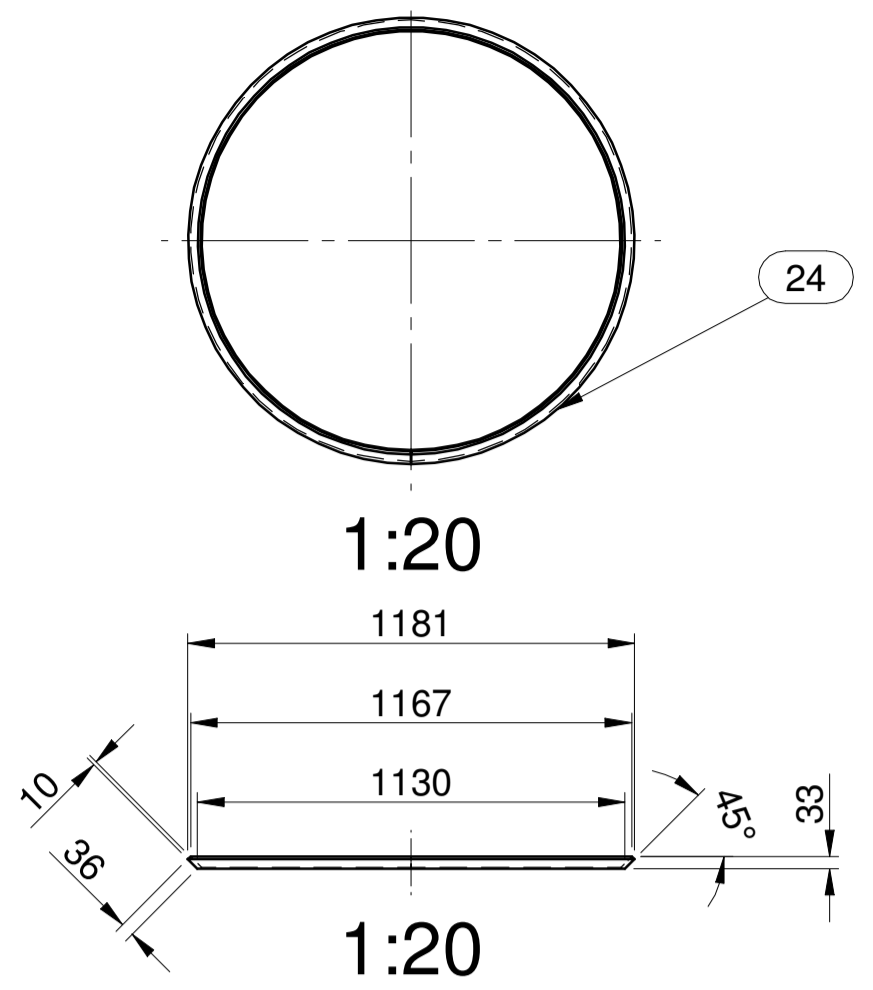
ORIGINAL SCALE: AS SHOWN ON VIEW  
 DRAWN jank  
 CHECKED

PROJECT: OVERPACK PECRON CONTAINER  
 TITLE: BASE PLATE ADAPTOR

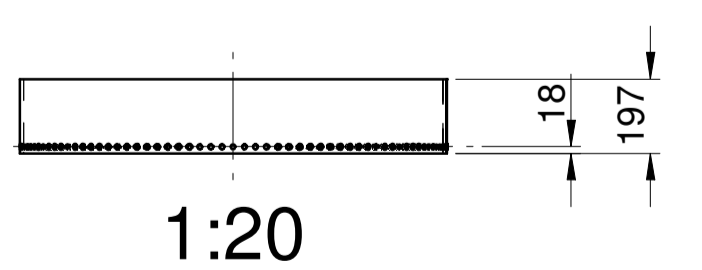
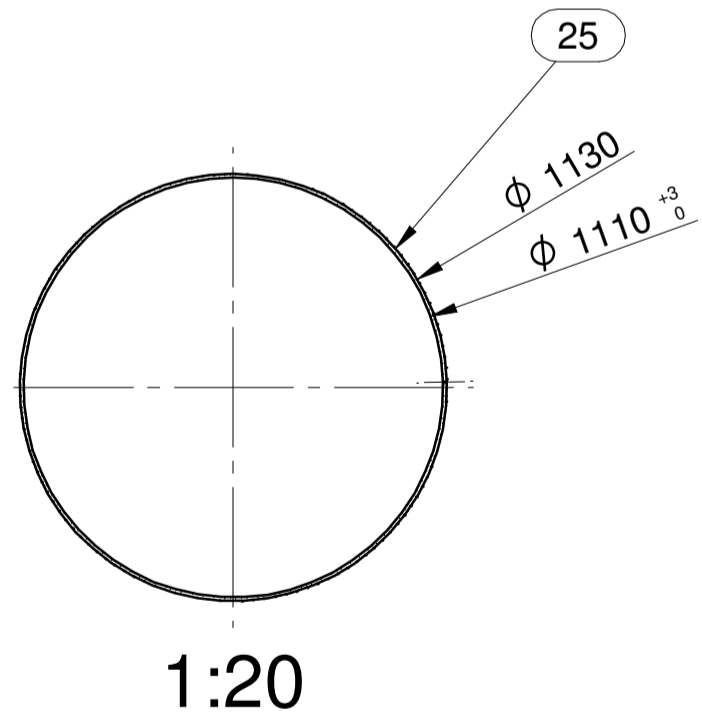
LAST UPDATE 2023/03/31  
 DRG. NO: NNDD-IP2TRANS-M-115\_R1 SHT 2 OF 7

A1  
  
 REVISION

READ THE NOTES AND LEADERS TO PREVENT MISHAPS



DETAIL K  
1:5



**NOTE:**  
1. ALL PARTS DIMENSIONS MUST BE FIT TO ITEM 25 CRUMBLE RING OUTER.

- GENERAL NOTES:**
1. BREAK ALL SHARP EDGES AND REMOVE ALL BURRS.
  2. ALL WELDS TO BE DETERMINE AND SPECIFY BY WELDING ENGINEER FROM MANUFACTURING.
  3. ALL WELDS TO BE FULL PENETRATION UNLESS OTHERWISE STATED DONE BY EXPERIENCE WELDER.
  4. VISUAL INSPECTION ON ALL WELDS.
  5. MAGNETIC PARTICLE AND UT TESTING ON ALL LUGS.
  6. ALL REMAINING WELDS TO BE DYE PENETRANT TESTED.

Over_Pack				
Item Number	Description	Material	Mass (Item)	Quantity
23	Bottom Inner_1_New_1.asm		115.057 kg	1
24	Locating Ring	Stainless Steel, 304 L	11.485 kg	1
25	Crumble Ring Outer	Stainless Steel, 304 L	54.141 kg	1
26	Base plate	Stainless Steel, 304 L	36.695 kg	1
27	Crumble Ring Inner	Stainless Steel, 304 L	8.088 kg	1
29	Crumble Ring Base Plate	Stainless Steel, 304 L	4.649 kg	1

**COPYRIGHT**  
THIS DRAWING IS THE PROPERTY OF NECSA. BY SIGNING ACCEPTANCE OF THE DRAWING TRANSMITTAL SHEET THE USER ACKNOWLEDGES THIS.  
THE USER UNDERTAKES TO CONSIDER ANY INFORMATION CONTAINED IN THIS DRAWING AS CONFIDENTIAL.  
THEREFORE THE USER UNDERTAKES NOT TO COPY, DISCLOSE OR SEND ANY CONFIDENTIAL INFORMATION TO A THIRD PARTY WITHOUT NECSA'S PRIOR WRITTEN CONSENT.  
ALL CONFIDENTIAL INFORMATION IN TANGIBLE FORM OF EXPRESSION WHICH HAS BEEN DISCLOSED TO OR THEREAFTER CREATED, WHETHER BY COPY OR REPRODUCTION, SHALL BE AND REMAIN THE PROPERTY OF NECSA.

REV	DESCRIPTION	CHK'D	DATE
0.2	ISSUED COMMENT & APPROVAL	JMK.	2023/03/29
1.0	ISSUED FOR MANUFACTURING	JMK.	2023/03/30

DISCIPLINE	NAME	SIGNED	A	C	N	DATE
CLIENT:						
MECH ENG:						
SHEQ:						
L&SA:						

APPROVED BY PROFESSIONAL ENGINEER  
*[Signature]*  
2023/03/31  
DATE

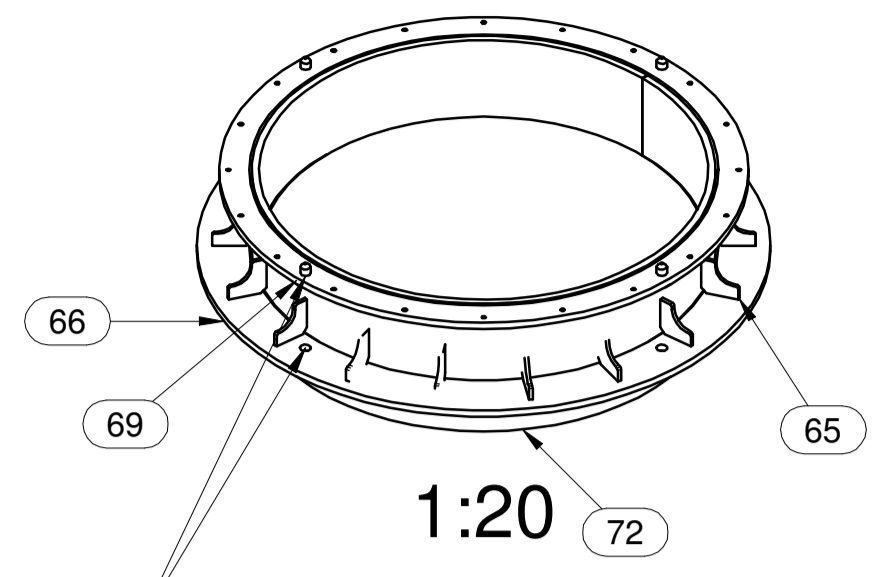
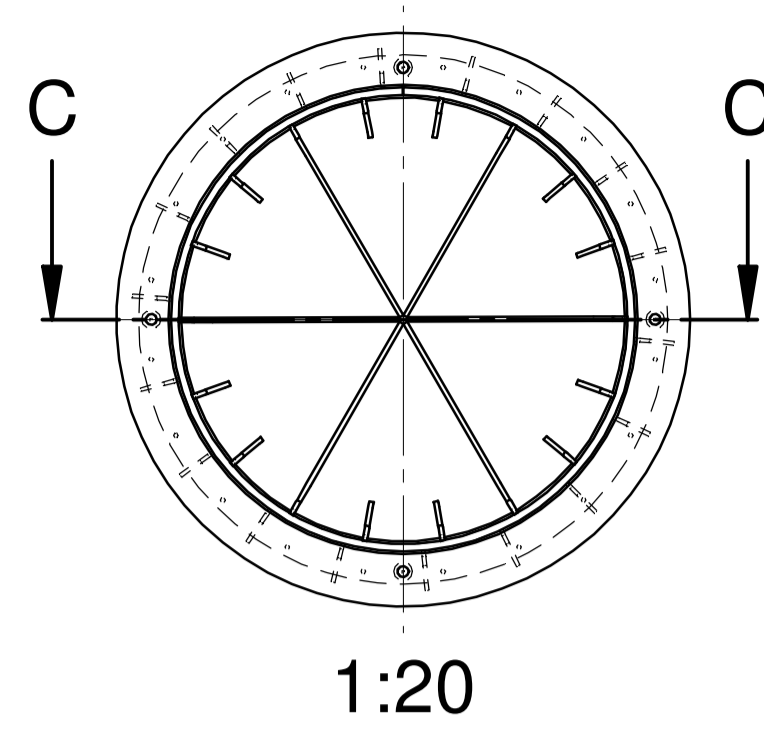
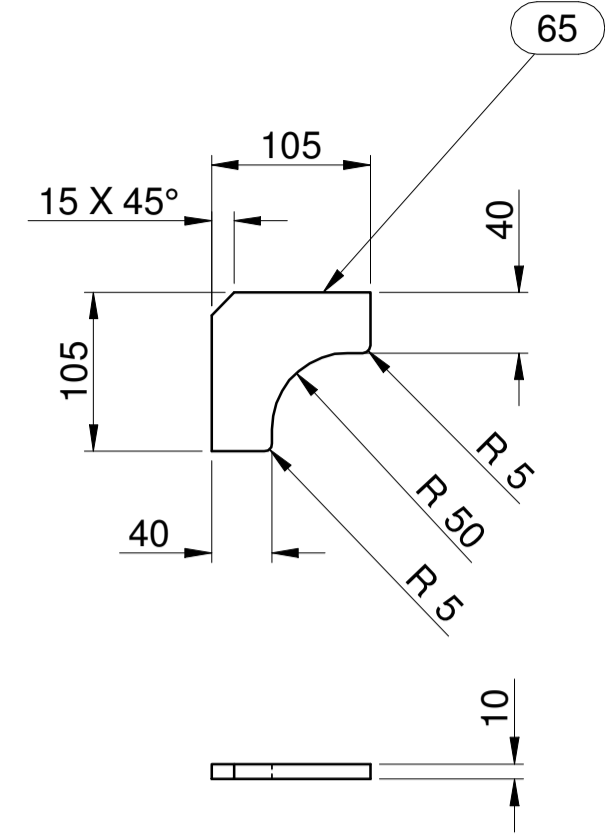
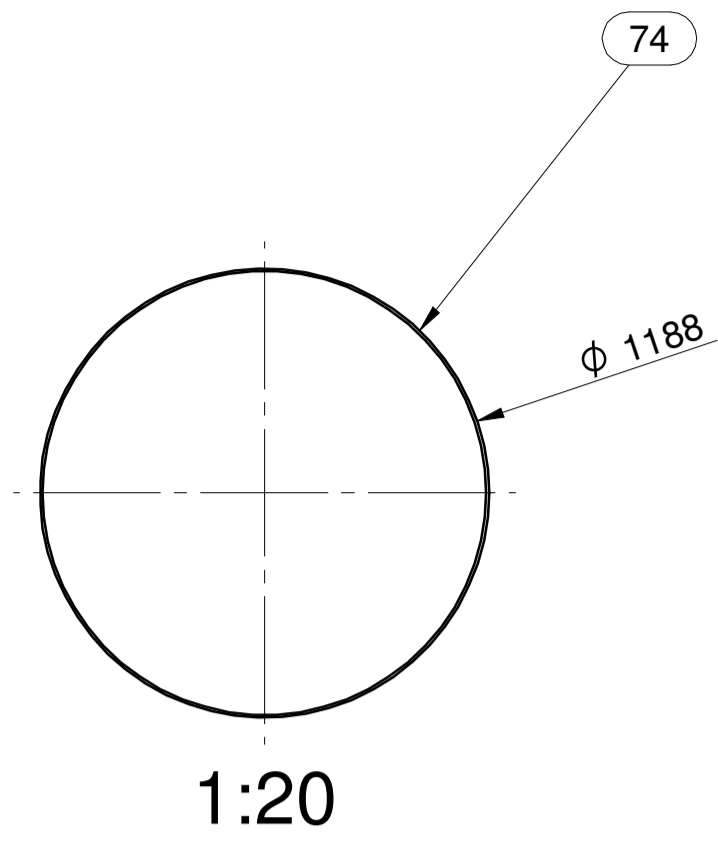
ORIGINAL SCALE: AS SHOWN ON VIEW  
DRAWN: jank  
CHECKED: *[Signature]*

PROJECT: OVERPACK PECRON CONTAINER  
TITLE: BOTTOM INNER

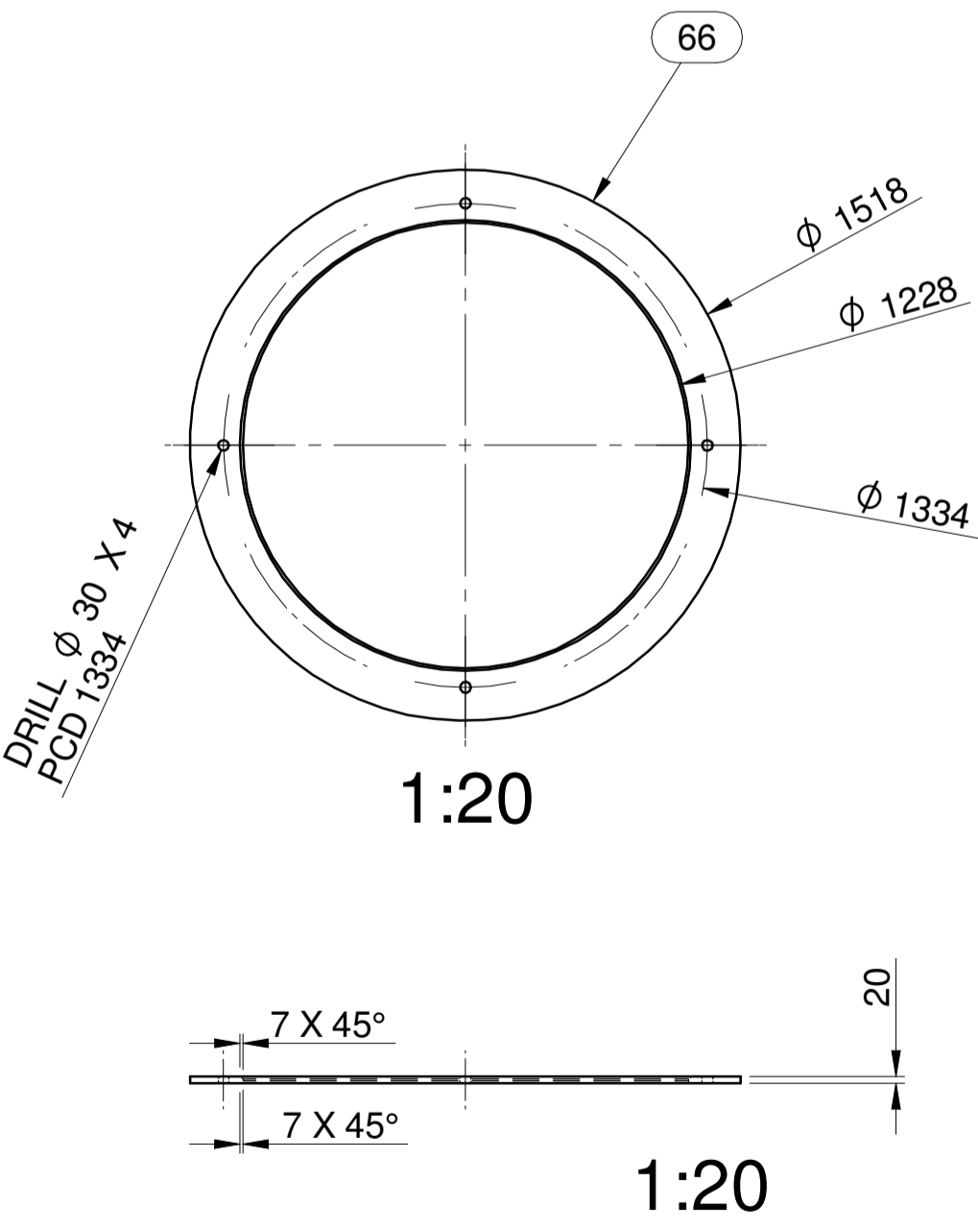
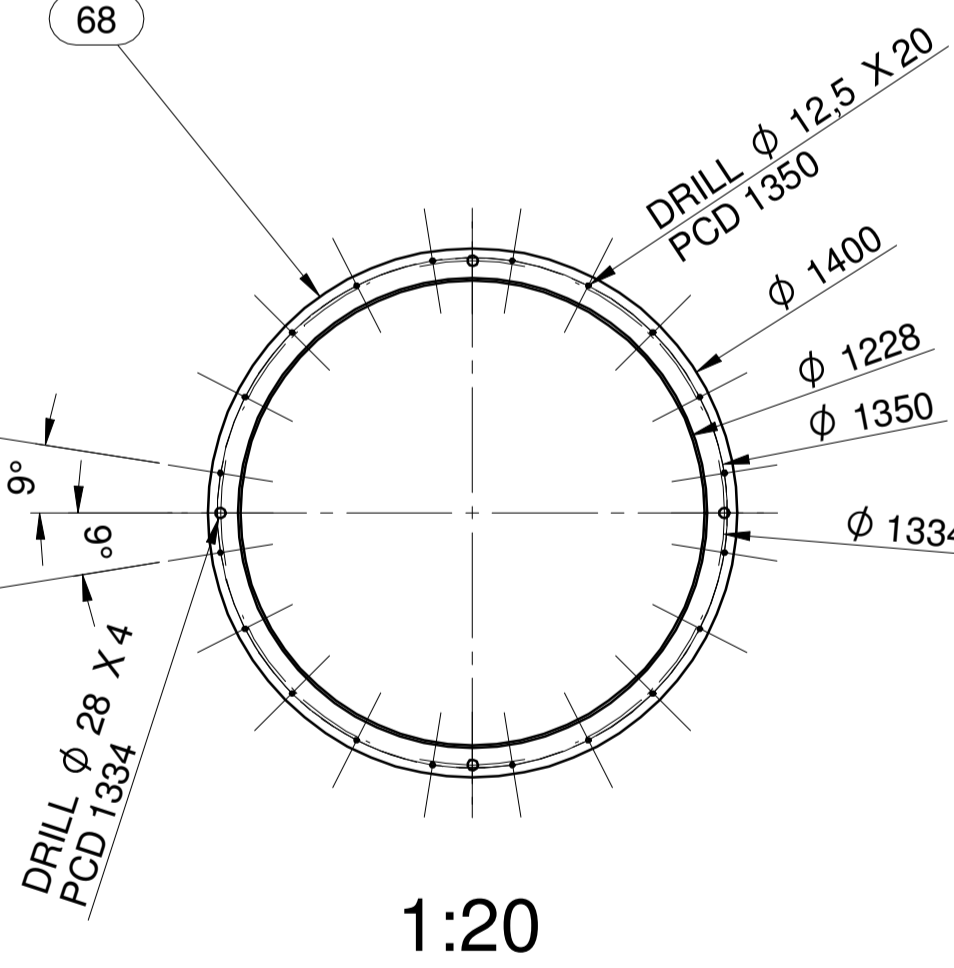
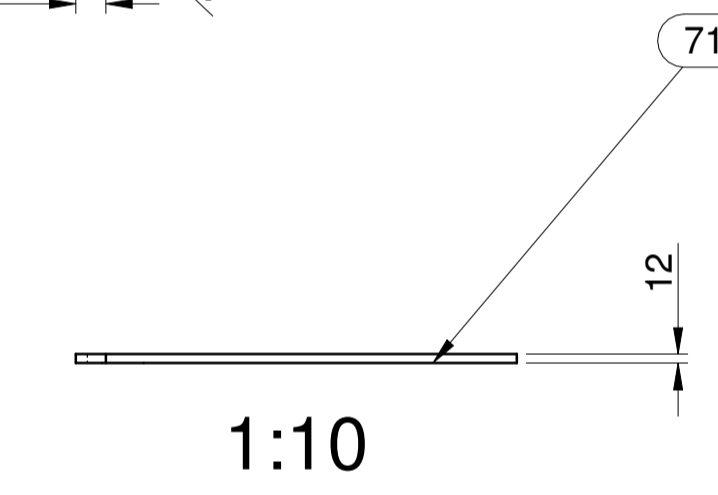
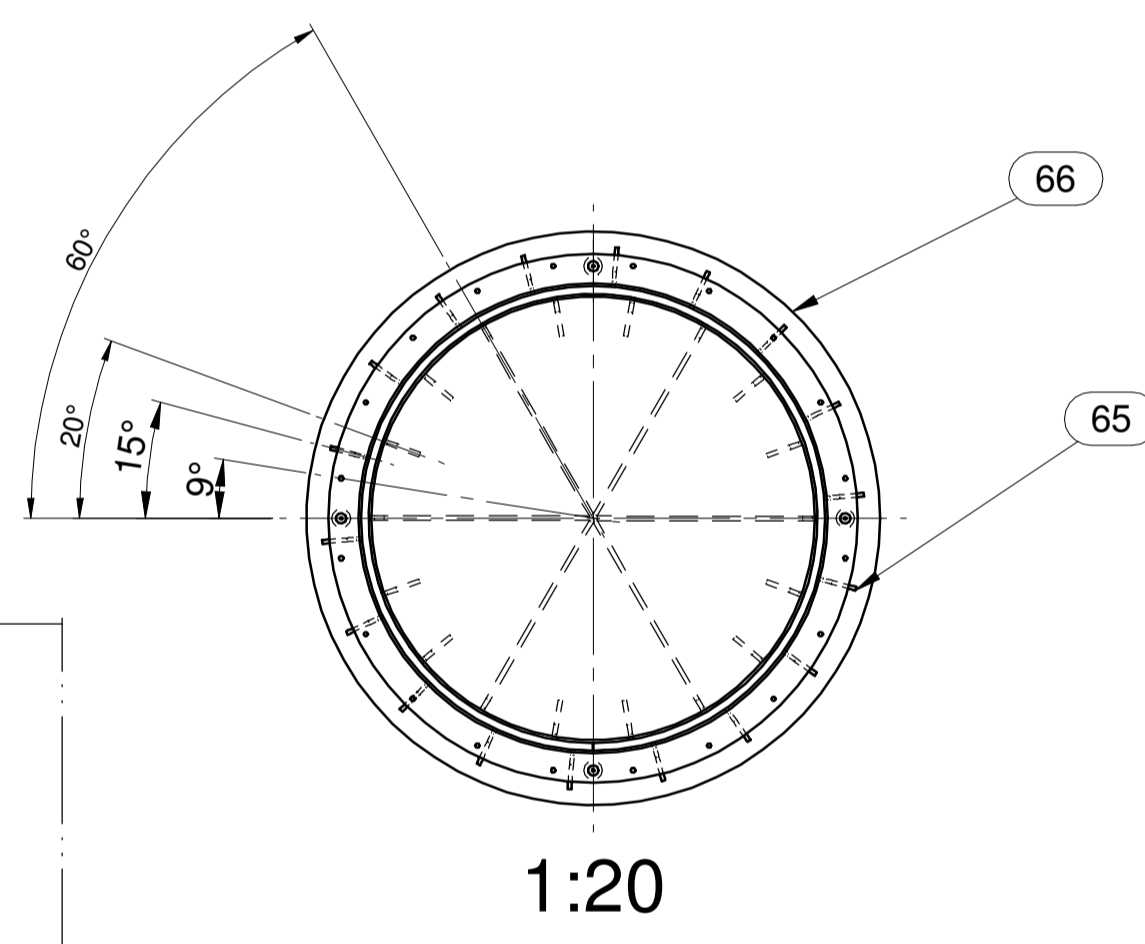
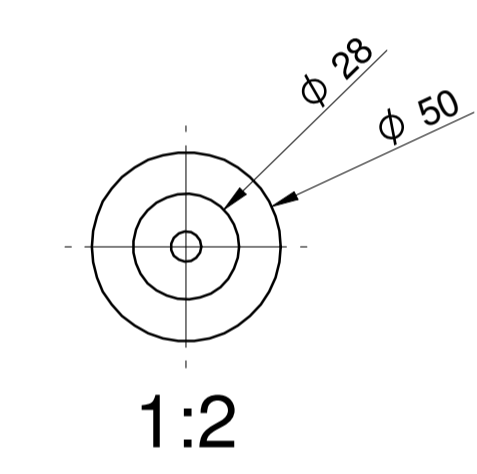
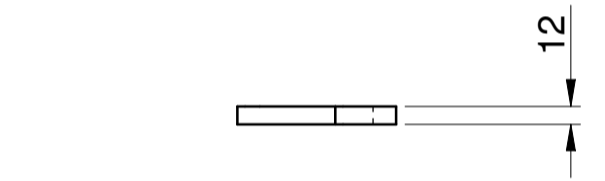
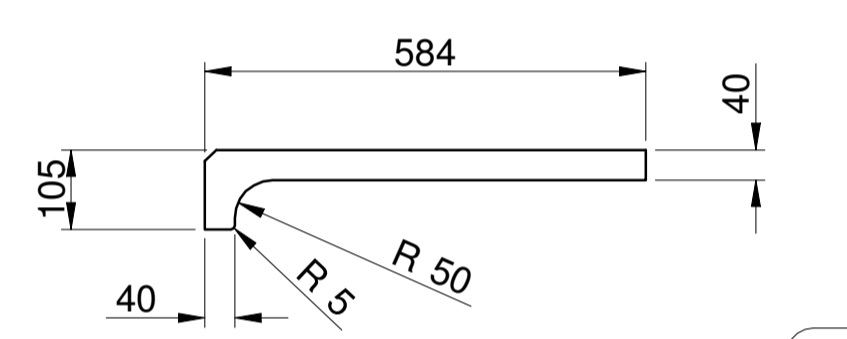
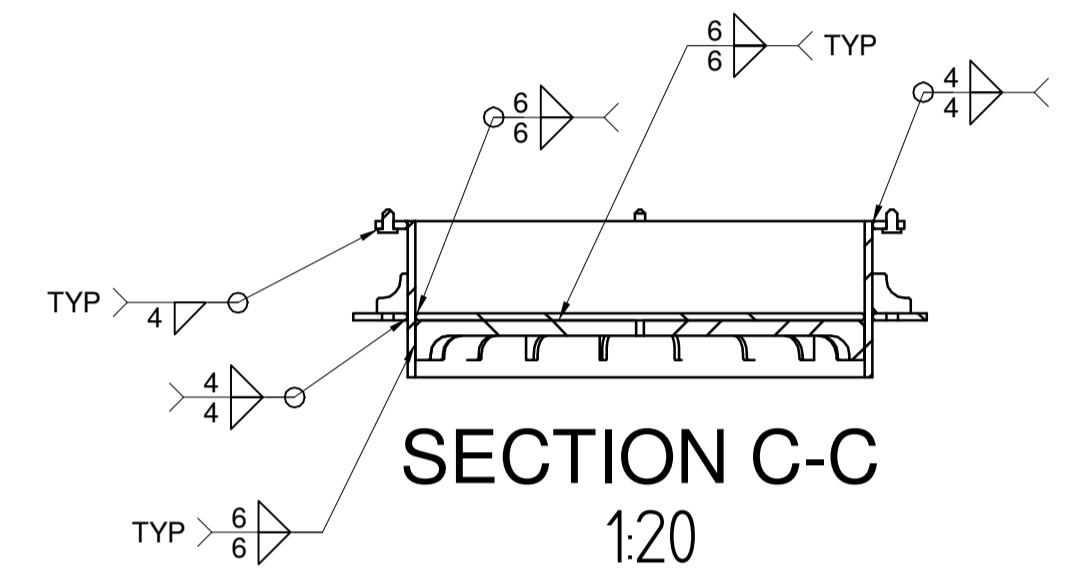
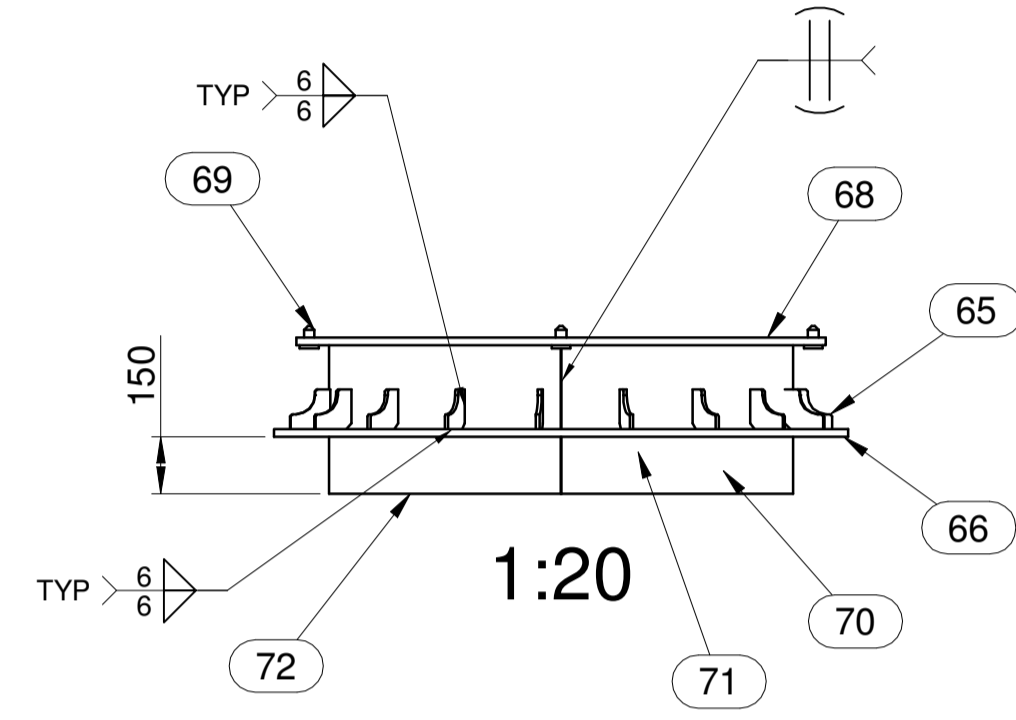
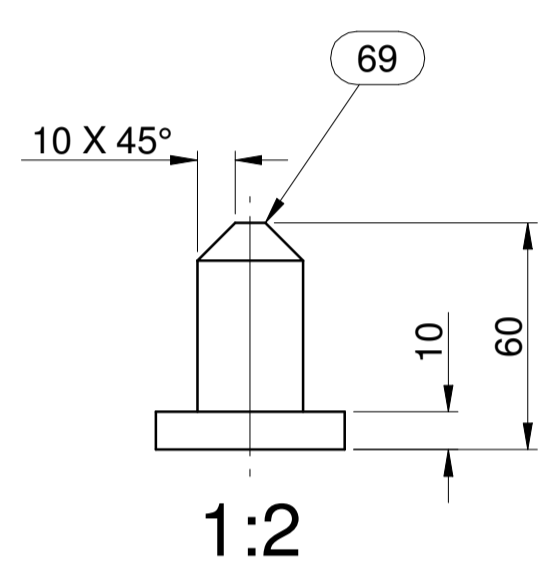
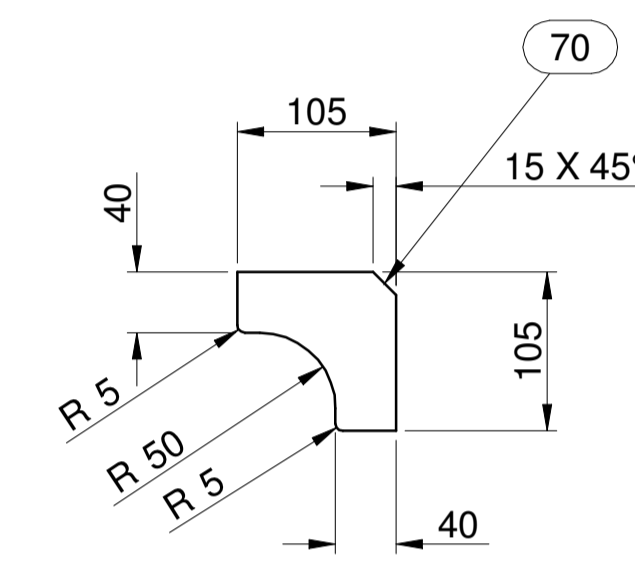
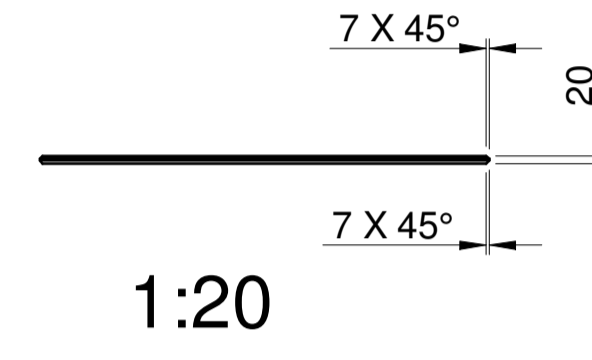
LAST UPDATE: 2023/03/31  
DRG. NO: NNDD-IP2TRANS-M-115\_R1 SHT 3 OF 7

A1  
1.0  
REVISION

READ THE NOTES AND LEADERS TO PREVENT MISHAPS



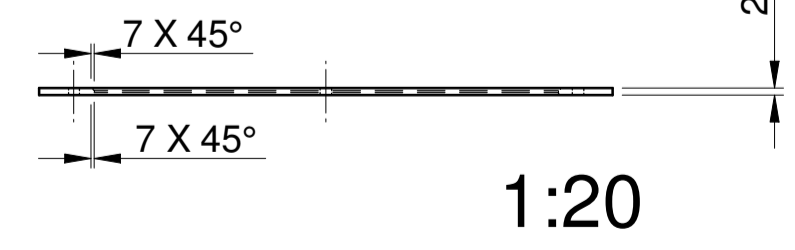
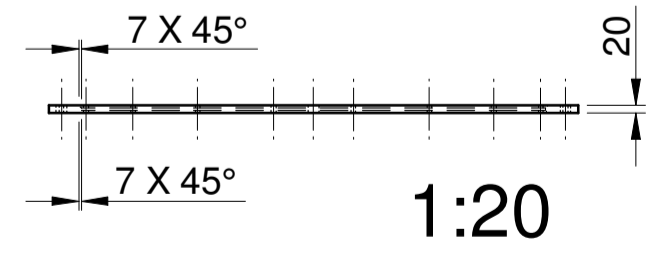
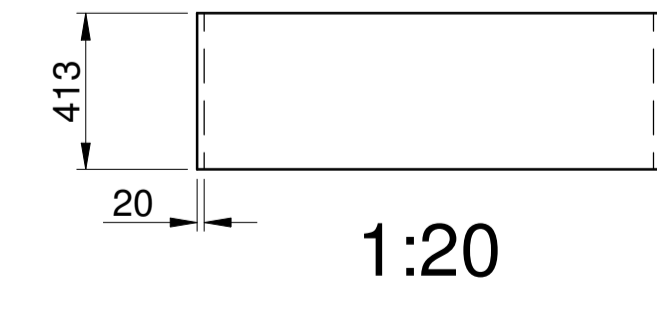
IMPORTANT TO ALIGN THIS HOLES.



**NOTE:**  
 1. THE ALIGNMENT OF THE LOCATING HOLES OF THE TOP FLANGE, BOTTOM FLANGE IS VERY IMPORTANT.  
 2. ALL PARTS DIMENSIONS MUST BE FIT TO ITEM 72 RING.

**GENERAL NOTES:**  
 1. BREAK ALL SHARP EDGES AND REMOVE ALL BURRS.  
 2. ALL WELDS TO BE DETERMINE AND SPECIFY BY WELDING ENGINEER FROM MANUFACTURING.  
 3. ALL WELDS TO BE FULL PENETRATION UNLESS OTHERWISE STATED DONE BY EXPERIENCE WELDER.  
 4. VISUAL INSPECTION ON ALL WELDS.  
 5. MAGNETIC PARTICLE AND UT TESTING ON ALL LUGS.  
 6. ALL REMAINING WELDS TO BE DYE PENETRANT TESTED.

Over_Pack				
Item Number	Description	Material	Mass (Item)	Quantity
1	Bottom Lid.asm		601.764 kg	1
65	Gusset Top	EN 10025-2: 2008 S355JR	0.565 kg	18
66	Outer Ring	EN 10025-2: 2008 S355JR	96.053 kg	1
68	Top Ring	EN 10025-2: 2008 S355JR	53.360 kg	1
69	Locating Pin	EN 10025-2: 2008 S355JR	0.369 kg	4
70	Gusset Bottom	EN 10025-2: 2008 S355JR	0.678 kg	12
71	Gusset Big	EN 10025-2: 2008 S355JR	2.478 kg	6
72	Ring	EN 10025-2: 2008 S355JR	245.477 kg	1
74	Base Plate	EN 10025-2: 2008 S355JR	172.226 kg	1



**COPYRIGHT**  
 THIS DRAWING IS THE PROPERTY OF NECSA. BY SIGNING ACCEPTANCE OF THE DRAWING TRANSMITTAL SHEET THE USER ACKNOWLEDGES THIS.  
 THE USER UNDERTAKES TO CONSIDER ANY INFORMATION CONTAINED IN THIS DRAWING AS CONFIDENTIAL.  
 THEREFORE THE USER UNDERTAKES NOT TO COPY, DISCLOSE OR SEND ANY CONFIDENTIAL INFORMATION TO A THIRD PARTY WITHOUT NECSA'S PRIOR WRITTEN CONSENT.  
 ALL CONFIDENTIAL INFORMATION IN TANGIBLE FORM OF EXPRESSION WHICH HAS BEEN DISCLOSED TO OR THEREAFTER CREATED, WHETHER BY COPY OR REPRODUCTION, SHALL BE AND REMAIN THE PROPERTY OF NECSA.

REV	DESCRIPTION	CHK'D	DATE
0.2	ISSUED COMMENT & APPROVAL	JMK.	2023/03/29
1.0	ISSUED FOR MANUFACTURING	JMK.	2023/03/30

DISCIPLINE	NAME	SIGNED	A	C	N	DATE
CLIENT:						
MECH ENG:						
SHEQ:						
LASA:						

APPROVED BY PROFESSIONAL ENGINEER  
  
 2023/03/3  
 DATE

ORIGINAL SCALE: AS SHOWN ON VIEW  
 DRAWN: jank  
 CHECKED:   
 TITLE

PROJECT: OVERPACK PECRON CONTAINER  
 BOTTOM LID

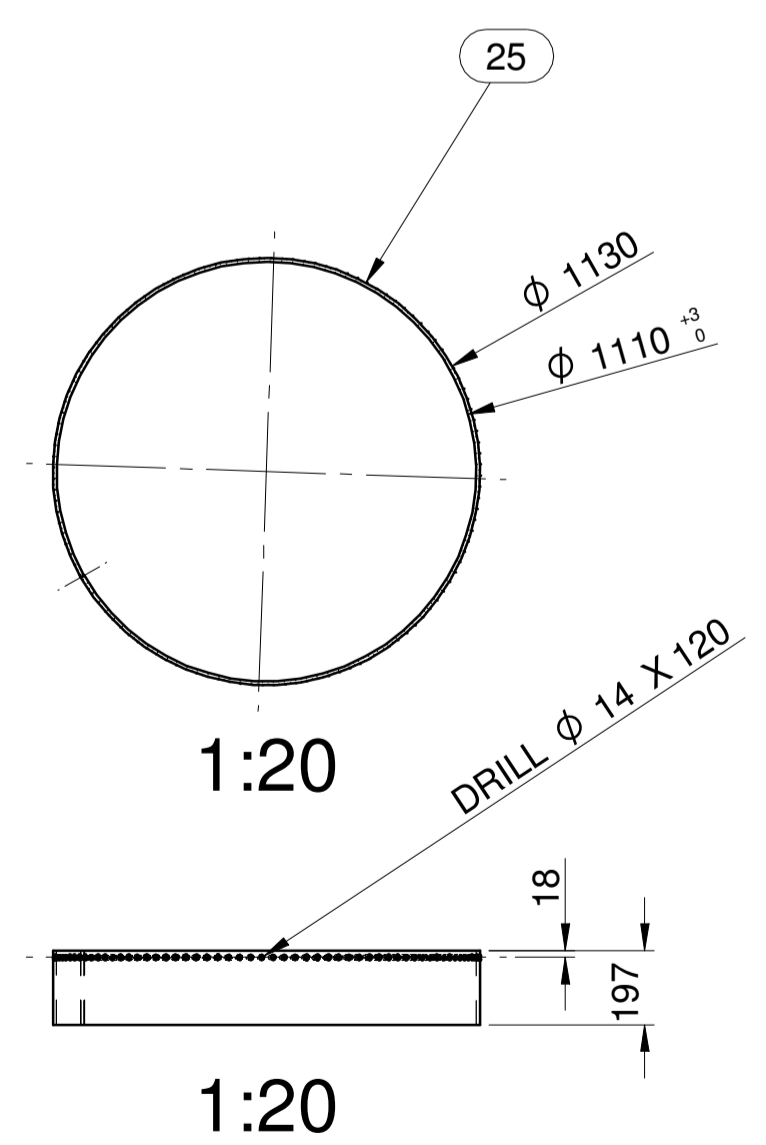
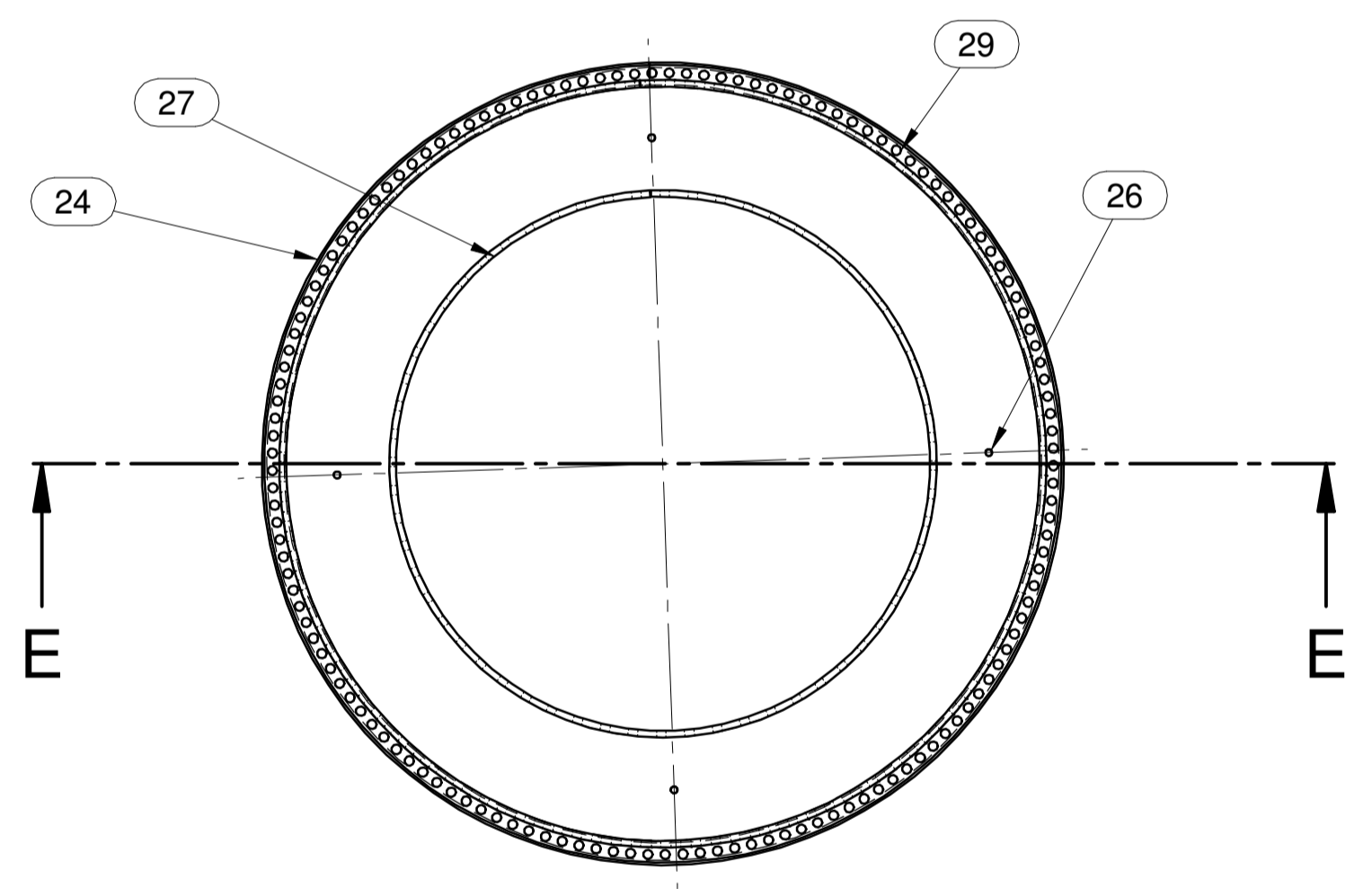
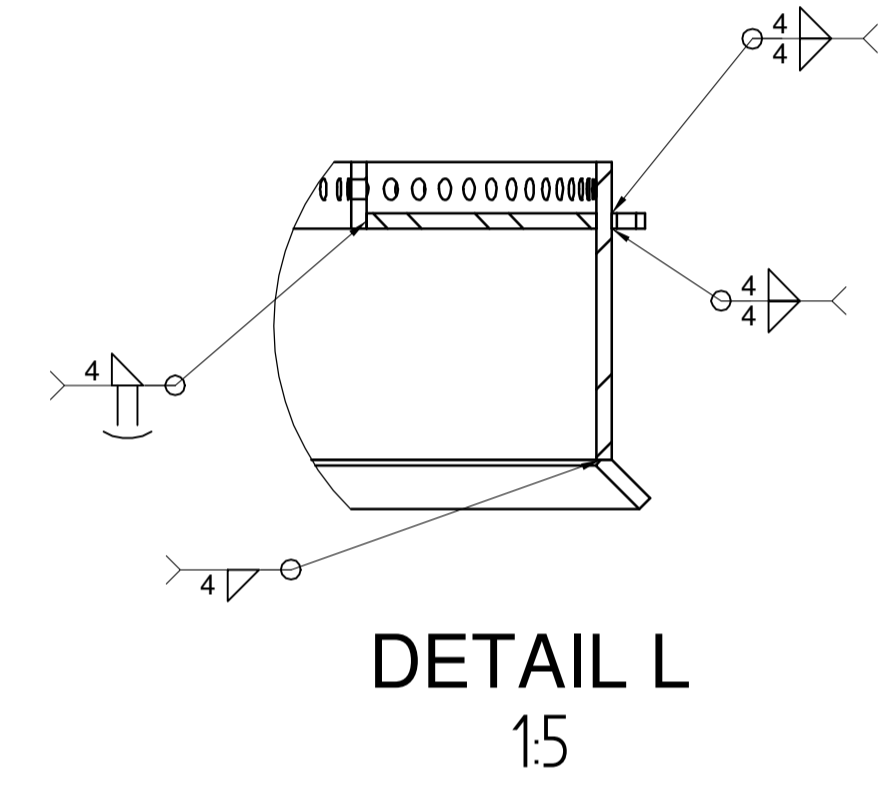
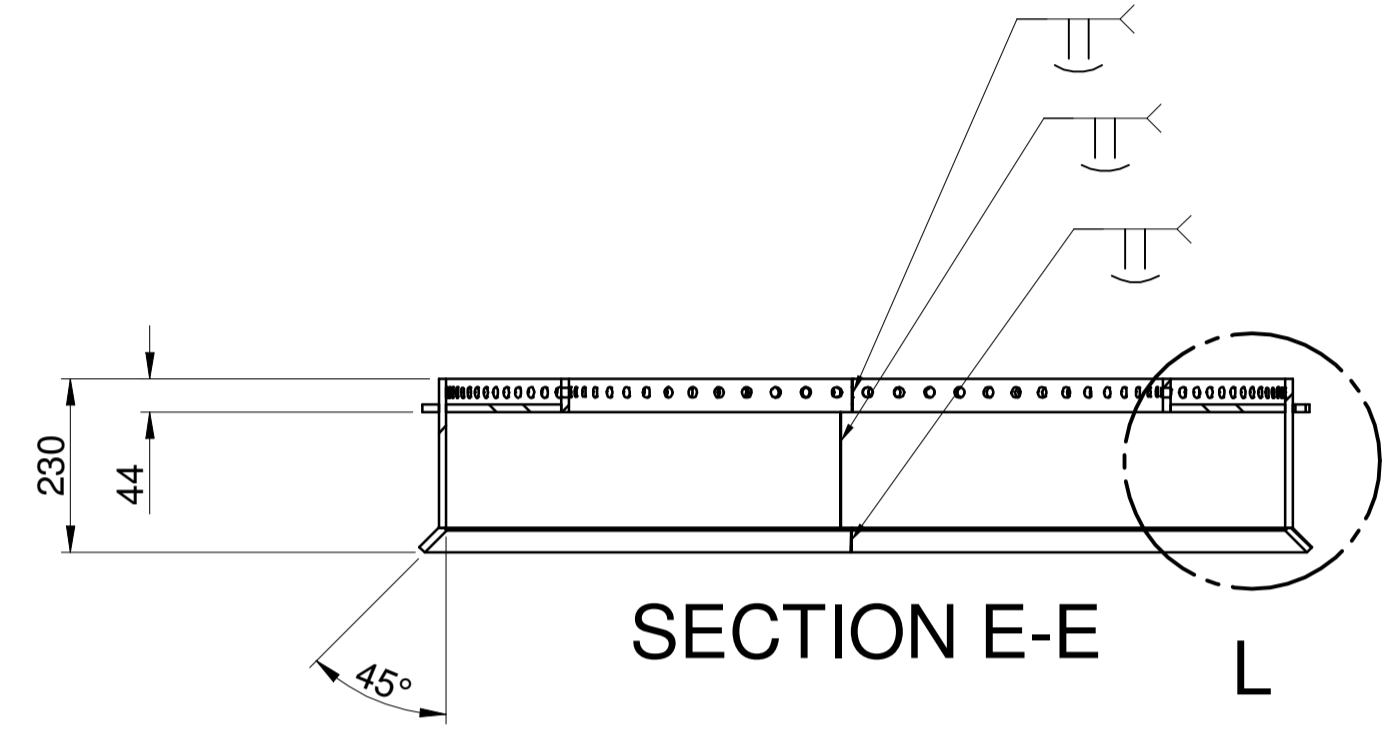
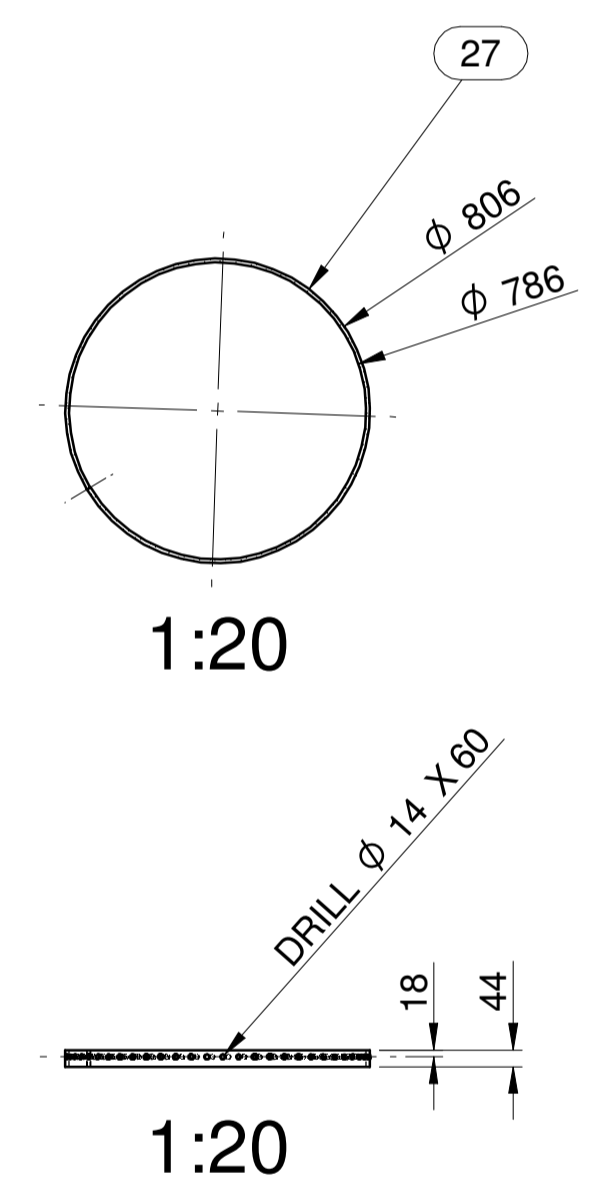
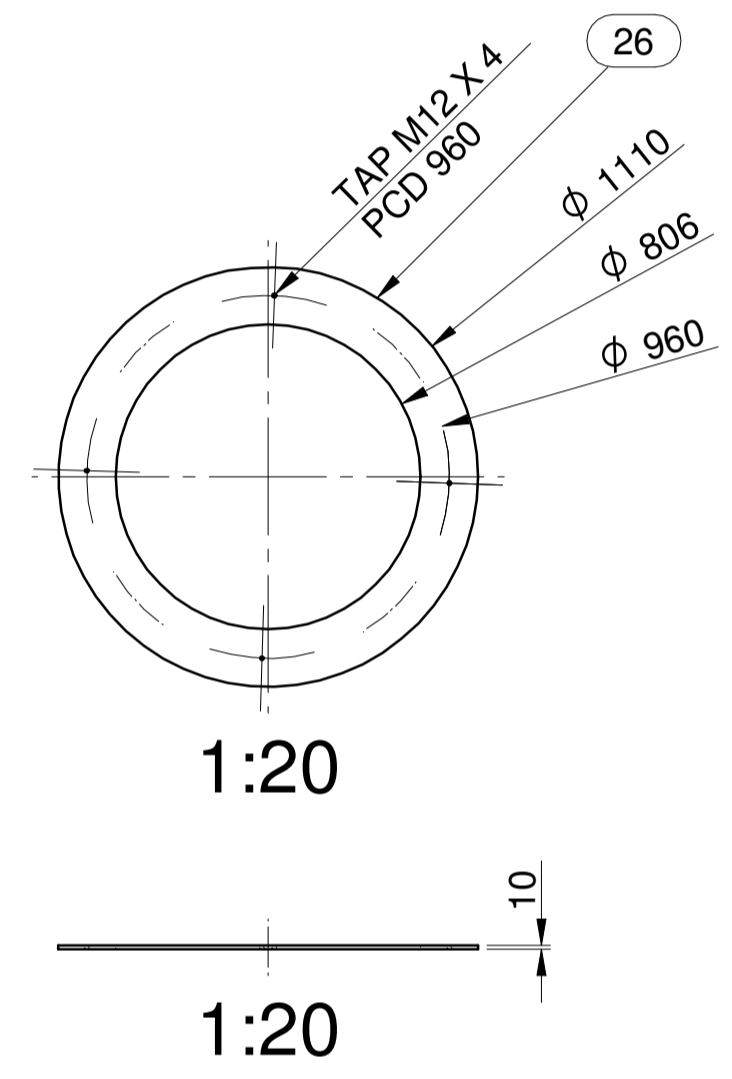
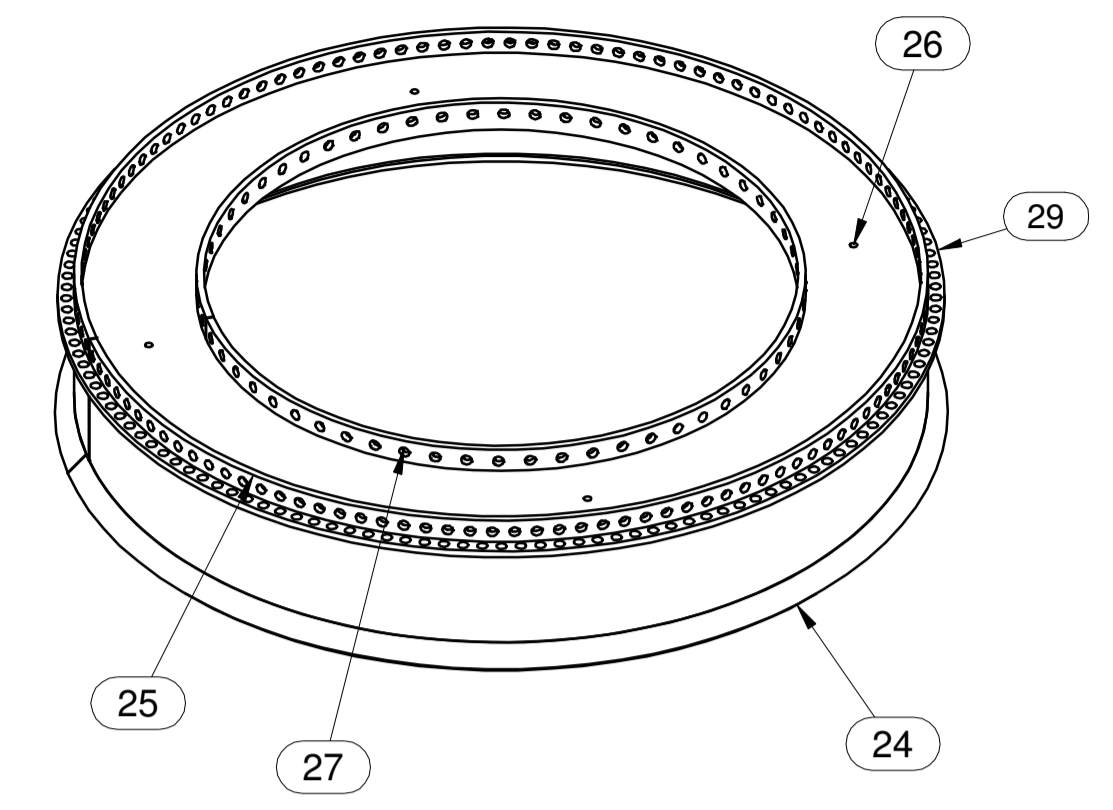
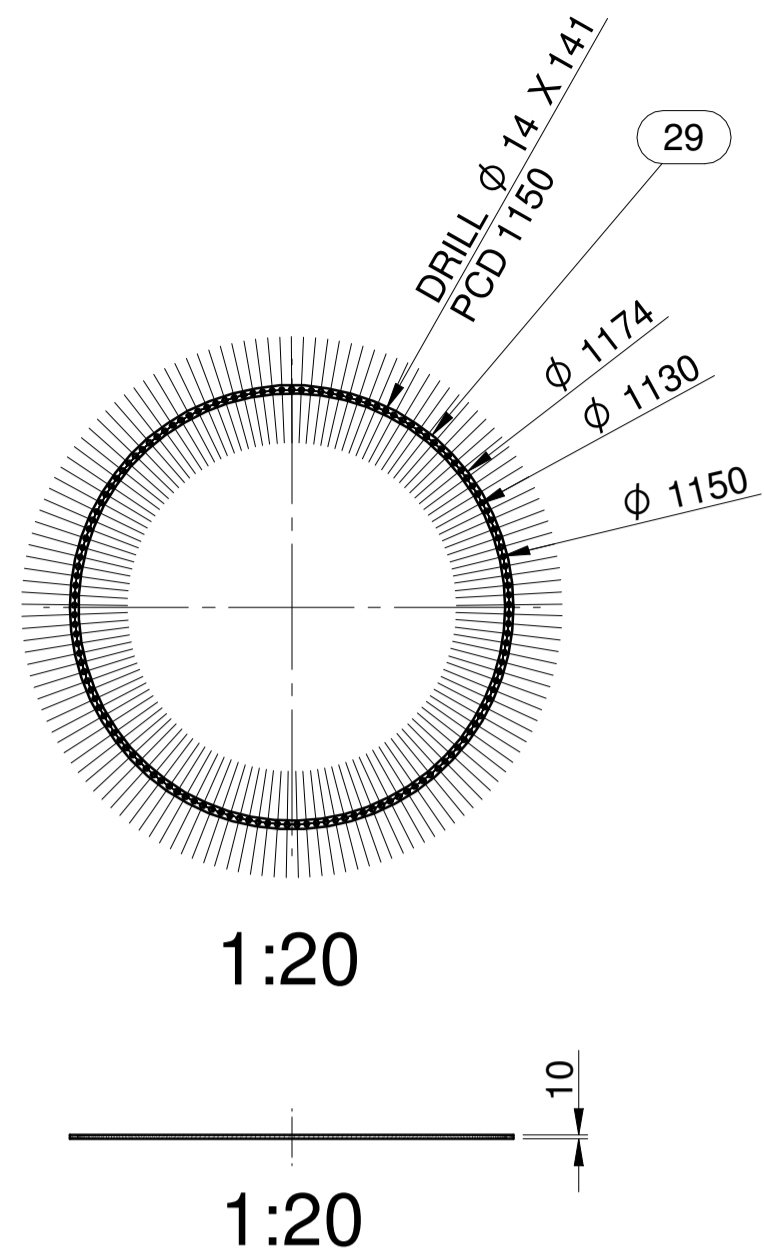
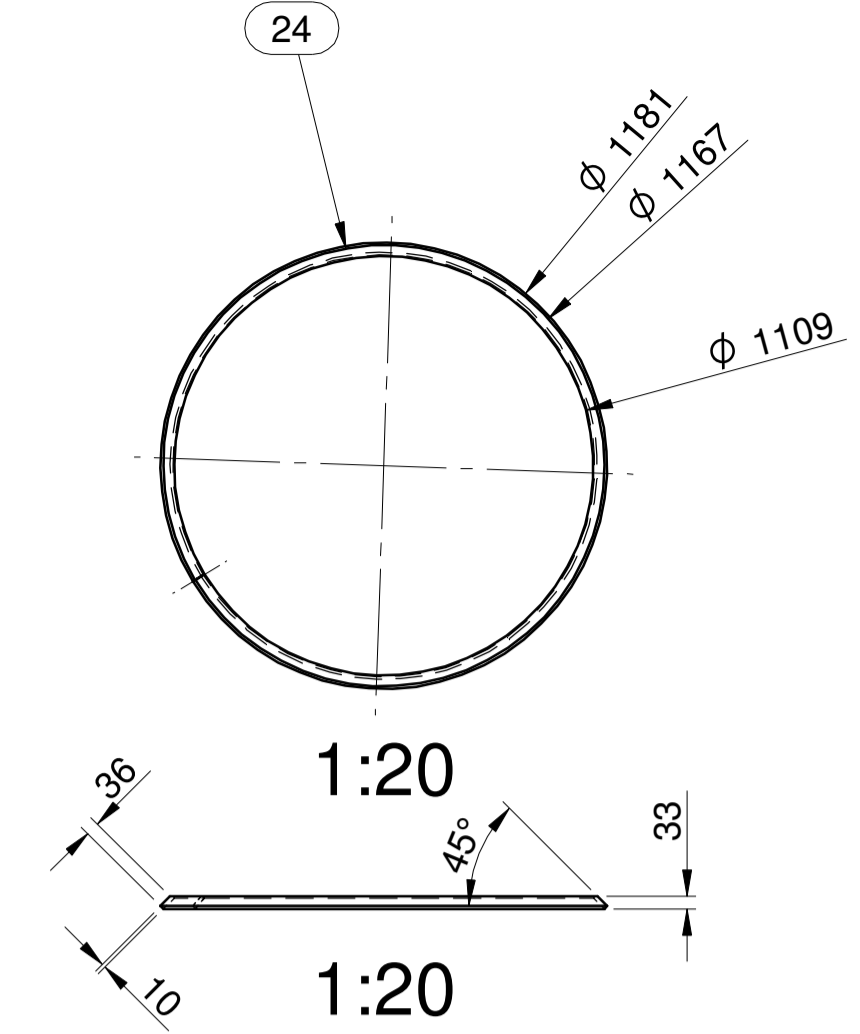
LAST UPDATE: 2023/03/31  
 DRG. NO: NNDD-IP2TRANS-M-115\_R1 SHT 4 OF 7

A1  
 1.0  
 REVISION



CIVIL

READ THE NOTES AND LEADERS TO PREVENT MISHAPS



**NOTE:**  
1. ALL PARTS DIMENSIONS MUST BE FIT TO ITEM 25 CRUMBLE RING OUTER.

- GENERAL NOTES:**
- BREAK ALL SHARP EDGES AND REMOVE ALL BURRS.
  - ALL WELDS TO BE DETERMINE AND SPECIFY BY WELDING ENGINEER FROM MANUFACTURING.
  - ALL WELDS TO BE FULL PENETRATION UNLESS OTHERWISE STATED DONE BY EXPERIENCE WELDER.
  - VISUAL INSPECTION ON ALL WELDS.
  - MAGNETIC PARTICLE AND UT TESTING ON ALL LUGS.
  - ALL REMAINING WELDS TO BE DYE PENETRANT TESTED.

Over_Pack				
Item Number	Description	Material	Mass (Item)	Quantity
30	Top Inner_1_New_1.asm		115.057 kg	1
24	Locating Ring	Stainless Steel, 304 L	11.485 kg	1
25	Crumble Ring Outer	Stainless Steel, 304 L	54.141 kg	1
26	Base plate	Stainless Steel, 304 L	36.695 kg	1
27	Crumble Ring Inner	Stainless Steel, 304 L	8.088 kg	1
29	Crumble Ring Base Plate	Stainless Steel, 304 L	4.649 kg	1

**COPYRIGHT**  
THIS DRAWING IS THE PROPERTY OF NECSA. BY SIGNING ACCEPTANCE OF THE DRAWING TRANSMITTAL SHEET THE USER ACKNOWLEDGES THIS.  
THE USER UNDERTAKES TO CONSIDER ANY INFORMATION CONTAINED IN THIS DRAWING AS CONFIDENTIAL.  
THEREFORE THE USER UNDERTAKES NOT TO COPY, DISCLOSE OR SEND ANY CONFIDENTIAL INFORMATION TO A THIRD PARTY WITHOUT NECSA'S PRIOR WRITTEN CONSENT.  
ALL CONFIDENTIAL INFORMATION IN TANGIBLE FORM OF EXPRESSION WHICH HAS BEEN DISCLOSED TO OR THEREAFTER CREATED, WHETHER BY COPY OR REPRODUCTION, SHALL BE AND REMAIN THE PROPERTY OF NECSA.

REV	DESCRIPTION	CHK'D	DATE
0.2	ISSUED COMMENT & APPROVAL	JMK.	2023/03/29
1.0	ISSUED FOR MANUFACTURING	JMK.	2023/03/30

DISCIPLINE	NAME	SIGNED	A	C	N	DATE
CLIENT :						
MECH ENG :						
SHEQ :						
L&SA :						

APPROVED BY  
PROFESSIONAL  
ENGINEER  
*[Signature]*  
2023/03/31  
DATE

ORIGINAL SCALE:  
AS SHOWN  
ON VIEW  
DRAWN jank  
CHECKED *[Signature]*



PROJECT:  
OVERPACK  
PECRON CONTAINER  
TOP INNER

LAST UPDATE  
2023/03/31  
DRG. NO:  
NNDD-IP2TRANS-M-115\_R1 SHT 6 OF 7

