

Building Design – Fenestration – Buildings with Natural Environmental Control

Climatic Zone: 1

Conductance (C_U) constant:	1,20
Heat Gain (C_{SHGC}) constant:	0,15

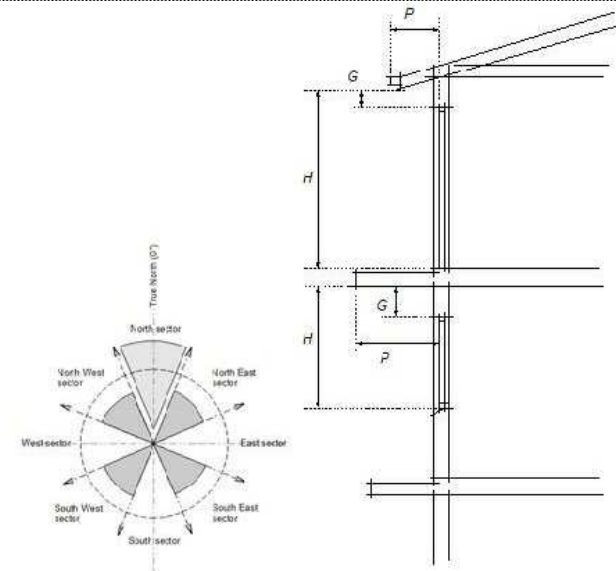
Net Floor Area of Storey / Room:	m ²	445,000
Penetration Area of Storey / Room:	m ²	26,138
Penetration Area to Nett Floor Area:	%	5.874

Max. Conductance (C_U) for Storey / Room:	534,000	Permissible
Solar Heat Gain (C_{SHGC}) for Storey / Room:	66,750	Permissible

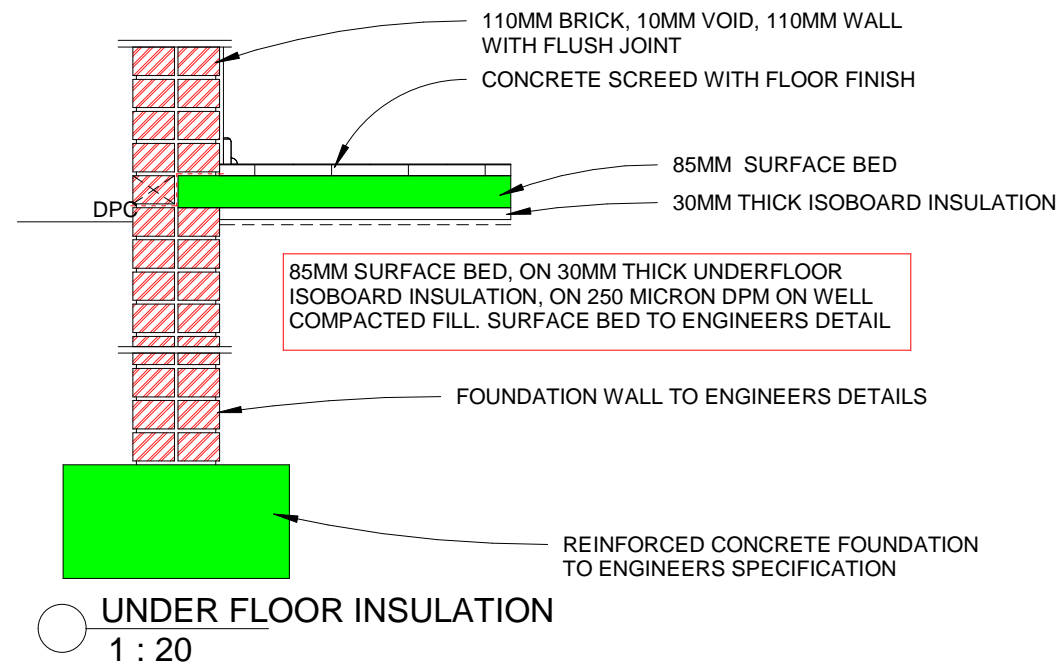
Conductance / Solar Heat Gain Available

Solar Heat Gain (C_{SHGC}) for Storey / Room:	59,69
---	-------

Glazing Elements					Glazing Element		Sector	Shading				Solar Exposure	Energy Constants			Multipliers	
Storey Level	Identifier No.	No. of Units	Size w x h	Area (m²)	U-value	SHGC	Orientation	Projection (P)	Height (H)	Height (G)	P/H	Factor (E)	C _A	C _B	C _C	Heating S _H	Cooling S _C
Ground Storey	w06	15	0.9 x 0.875	11.81	7.90	0.81	North	0.900	1.385	0.510	0.325	0.440				0.995	0.940
Ground Storey	w07	6	0.889 x 0.457	2.44	7.90	0.81	North	0.900	0.967	0.510	0.465	0.360				0.990	0.910
Ground Storey	w06	12	0.9 x 0.875	9.45	7.90	0.81	South	3.090	1.385	0.510	1.116	0.230				0.860	0.790
Ground Storey	w07	6	0.889 x 0.457	2.44	7.90	0.81	South	3.090	0.967	0.510	1.598	0.190				0.815	0.730



ROOF INSULATION AS PER BUILDING SECTIONS ALL TO MECHANICAL ENGINEERS APPROVAL



1	2	3	4	5
Glass Description	Performance Values			
	Aluminium / Steel Framing		Timber / uPVC / *Aluminium Framing	
	Total U-value	SHGC	Total U-value	SHGC
Single – clear	7.9	0.31	5.6	0.77
Single – tinted	7.9	0.39	5.6	0.65
Single Low E	5.75	0.36	4.06	0.63
Clear Double (3/6/3)	4.25	0.72	3	0.68
Tinted Double	4.25	0.59	3	0.56
Clear Double Low E	5.4	0.36	2.41	0.62
Tinted Double Low E	5.4	0.54	2.41	0.51

Job No.	Drawing No.	Rev.
2020	TSNS_BNFP_XA	01