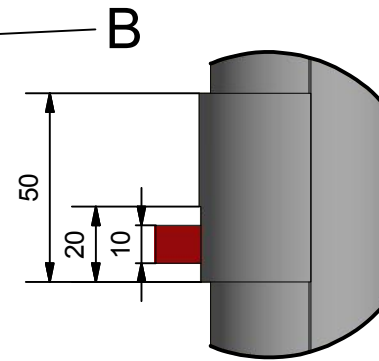
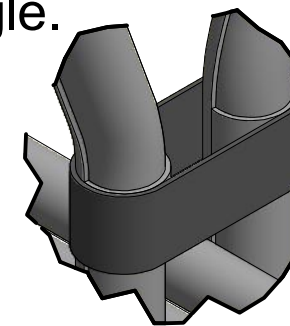
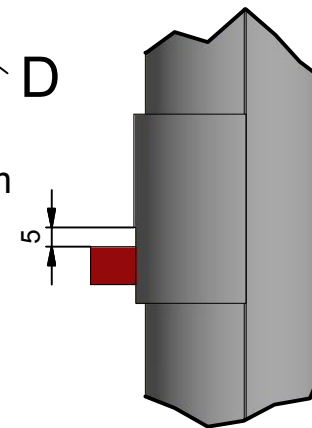


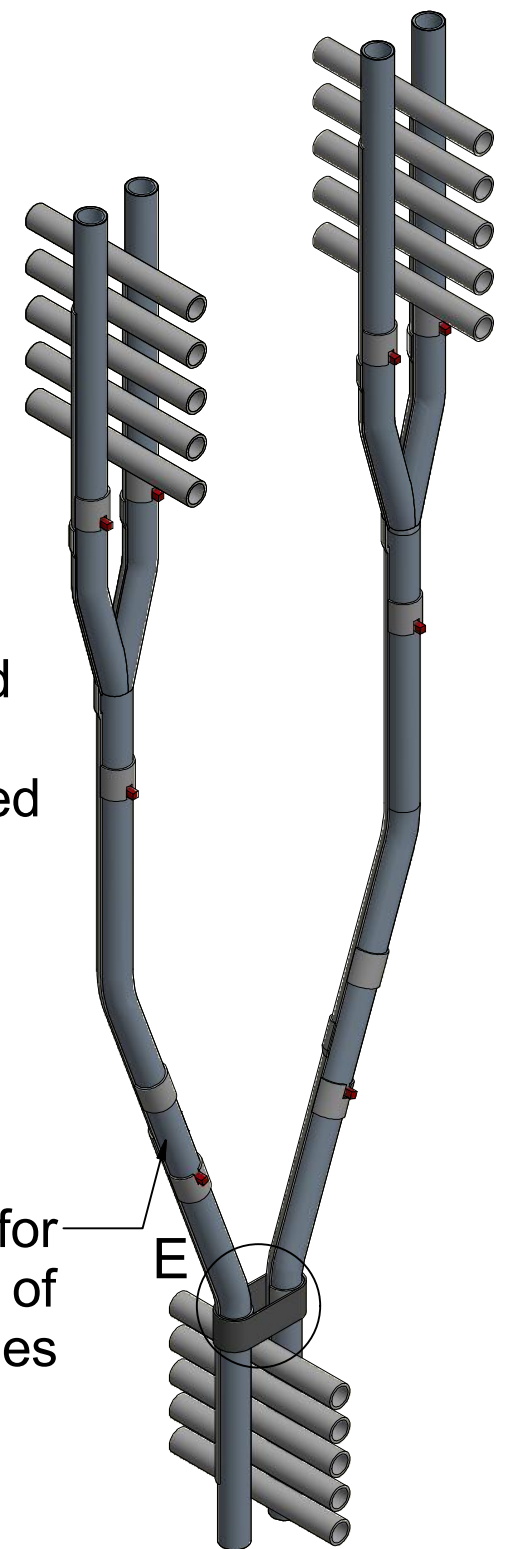
NB: The bangle closes to the Superheater 3 Outlet must be installed with out stopper block. Bow tie must be installed over bangle.



NB: Stopper Block MUST be fitted with a 5mm gap between shield and stopper block as shown on the sketch.



See Sketch for placement of bangles



NOTE: The 60ml Sling tube shield will consist of three parts which will overlap each other at the joints.

MAT FLOW	STOCK NO	MATERIAL	O/D	WT	MIN 't
SHIELD	NA	310 STAINLESS STEEL	50.5	3	NA
STOPPER BLOCK	NA	10CrMo910	NA	NA	NA

THIS DRAWING IS NOT TO BE USED FOR MANUFACTURING	ROW#	ROW PITCH#	LATEST REV:	ESKOM DWG REF:
	N/A	N/A	A	0.61_02133_REV_2

THIS DRAWING IS THE PROPERTY OF ESKOM. IT MAY ONLY BE ALTERED BY THE CARAB TEKNIVA GROUP. CONTROLLED REVISIONS ARE ADMINISTERED BY CARAB TEKNIVA GROUP. A4

DRAWN BY:	MB PRETORIUS	22/08/2011	TITLE:	60ml Sling Tubes Shield 3-Pieces-Rev1
CHECKED BY:	DJP HUYSAMEN	22/08/2011	TUTUKA POWER STATION	
APPROVED BY:	AW CLAASSENS		SCALE:	N/A
			CARAB DWG NO:	TUT-PP-GEN-119

