



**LUNIKA INVESTMENTS (Pty) Ltd**

**BID NO: MNQ/SCM/61/23-24**

**PROJECT NAME: SUB-CONSTRUCTION FOR UPGRADING OF MCHUBAKAZI INTERNAL STREETS & NGQAMAKWE STORMWATER**

**CLOSING DATE: 28 FEBRUARY 2024**

**CLOSING TIME: 12H00**

**TENDER BOX ADDRESS: MNQUMA LOCAL MUNICIPALITY - CORNER KING AND MTHATHA STREET BUTTERWORTH – 4960**

**TENDER DOCUMENT FEE: NONE**

**IMPORTANT NOTES TO BIDDERS:**

- a) Tenders must be properly received and deposited in the above mentioned tender box on or before the closing date at **Mnquma Local Municipality, Corner King and Mthatha Street, Butterworth, 49560**. No late, couriered, faxed or emailed tenders will be accepted under any circumstances. Tender offers must be submitted in a sealed envelope clearly reflecting the tender number and tender description as indicated above.
- b) Do not reproduce this tender document (do not take it apart, omit pages, change wording or put documents between its pages). All other mandatory documents must be attached as per the advert requirements.
- c) Initial each and every page. Site meetings will be reflected on adverts if attendance is compulsory.

<b>TENDERER</b>	
<b>NAME of Company/Close Corporation or Partnership /Consortium/ Joint Venture or Sole Proprietor /Individual/Other</b>	
<b>TRADING AS</b> (if different from above)	
<b>COMPANY REGISTRATION NUMBER</b>	
<b>CSD NUMBER</b>	
<b>CIDB Grading</b>	
<b>CIDB CRS Number</b>	

**MNQUMA LOCAL MUNICIPALITY**

**TENDER NUMBER: MNQ/SCM/61/23-24**

**UPGRADING OF MCHUBAKAZI INTERNAL STREETS & NGQAMAKWE  
STORMWATER- SUBCONTRACTING**

**CONTRACTPART 2 (OF 4) : PRICING DATA**

- C2.1 Pricing Instructions**
- C2.2 Bill of Quantities**
- C2.3 Summary Page for Bill of Quantities**

## C2.1 : PRICING INSTRUCTIONS

### C2.1.1      **PREAMBLE TO THE BILL OF QUANTITIES**

1) The conditions of contract, the contract data, the specifications (including the project specifications) and the issued drawings shall be read in conjunction with the bill of quantities.

2) The bill comprises items covering the contractor's profit and costs of general liabilities and of the construction of temporary and permanent works.

although the tenderer is at liberty to insert a rate of his own choosing for each item in the bill, he should note the fact that the contractor is entitled, under various circumstances, to payment for additional work carried out and that the engineer is obliged to base his assessment of the rates to be paid for such additional work on the rates the contractor inserted in the bill. Clause 8 of each standardized specification, and the measurement and payment clause of each particular specification, read together with the relevant clauses of the project specifications, all set out which ancillary or associated activities are included in the rates for the specified operations.

3) Descriptions in the bill of quantities are abbreviated and may differ from those in the standardized and project specifications. No consideration will be given to any claim by the contractor submitted on such a basis. The bill has been drawn up generally in accordance with the latest issue of civil engineering quantities. Should any requirement of the measurement and payment clause of the appropriate standardized or project specification(s) be contrary to the terms of the bill or, when relevant, to the civil engineering quantities, the requirement of the appropriate standardized, project, or particular specification as the case may be, shall prevail.

4) Unless stated to the contrary, items are measured net in accordance with the drawings without any allowance having been made for waste.

5) The amounts and rates to be inserted in the bill of quantities shall be the full inclusive amounts to the employer for the work described under the several items. such amounts shall cover all the costs and expenses that may be required in and for the construction of the work described, and shall cover the costs of all general risks, profits, taxes (but excluding value-added tax), liabilities and obligations set forth or implied in the documents on which the tender is based.

6) An amount or rate shall be entered against each item in the bill of quantities, whether or not quantities are stated. An item against which no amount or rate is entered will be considered to be covered by the other amounts or rates in the bill.

The tenderer shall also fill in a rate against the items where the words "rate only" appear in the amount column. Although no work is foreseen under these items and no quantities are consequently given in the quantity column, the tendered rates shall apply should work under these items actually be required.

should the tenderer group a number of items together and tender one sum for such group of items, the single tendered sum shall apply to that group of items and not to each individual item, or should he indicate against any item that full compensation for such item has been included in another item, the rate for the item included in another item shall be deemed to be nil.

The tendered rates, prices and sums shall, subject only to the provisions of the conditions of contract, remain valid irrespective of any change in the quantities during the execution of the contract.

7) The quantities of work as measured and accepted and certified for payment in accordance with the conditions of contract, and not the quantities stated in the bill of quantities, will be used to determine payments to the contractor. The validity of the contract shall in no way be affected by differences between the quantities in the bill of quantities and the quantities certified for payment. Ordering of materials is not to be based on the bill of quantities.

8) For the purposes of this bill of quantities, the following words shall have the meanings hereby assigned to them:

**Unit:** the unit of measurement for each item of work as defined in the standardized, project or particular specifications

**Quantity:** the number of units of work for each item

**Rate:** the payment per unit of work at which the tenderer tenders to do the work

**Amount:** the quantity of an item multiplied by the tendered rate of the (same) item

**Sum:** an amount tendered for an item, the extent of which is described in the bill of quantities, the specifications or elsewhere, but of which the quantity of work is not measured in units

9) The units of measurement described in the Schedule/Bill of Quantities are metric units. Abbreviations used in the Schedule/Bill of Quantities are as follows :

mm	=	millimetre	h	=	hour
m	=	metre	kg	=	kilogram
km	=	kilometre	t	=	ton (1 000 kg)
m <sup>2</sup>	=	square metre	No.	=	number
m <sup>2</sup> .pass	=	square metre-pass	sum	=	lump sum
ha	=	hectare	MN	=	MegaNewton
m <sup>3</sup>	=	cubic metre	MN.m	=	MegaNewton-
metre					
m <sup>3</sup> .km	=	cubic metre-kilometre	P C sum	=	Prime Cost sum
ℓ	=	litre	Prov sum	=	Provisional sum
kl	=	kilolitre	%	=	per cent
MPa	=	MegaPascal	kW	=	kilowatt

#### 10) Expanded public works programme (EPWP) implications

Those parts of the contract to be constructed using labour-intensive methods have been marked in the schedule of quantities or bill of quantities with the letters li in a separate column filled in against every item so designated. works, or parts of the works so designated are to be constructed using labour-intensive methods only. The use of plant to provide such works, other than plant specifically provided for in the scope of work, is a variation to the contract. The items marked with the letters li are not necessarily an exhaustive list of all the activities which must be done by hand, and this clause does not over-ride any of the requirements in the generic labour intensive specification in the scope of works.

Payment for items which are designated to be constructed labour-intensively (either in this schedule or in the scope of works) will not be made unless they are constructed using labour intensive methods. Any unauthorised use of plant to carry out work which was to be done labour-intensively will not be condoned and any works so constructed will not be certified for payment.

11) The cost of all samples and tests as may be required to ascertain and check the quality of materials and workmanship or any part of the works are deemed to be included in the relevant rates in the bill of quantities. The contractor shall at his/her own expense take levels and prepare cross sections as required for the measurement and computation of excavation and fill quantities etc.

12) Value added tax (vat) shall not be included in the individual rates but is to be added as a total at the end of the summary.

13) All materials to be provided by the contractor will be SABS, ISO OR JASWIC approved where such a specification exists, whether specifically stated in the schedule or not.

14) Where a particular make of item is specified, the words "or similar approved" shall mean approval by the engineer in writing.

15) The quantities set out in the Schedule/Bill of Quantities are the estimated quantities of the Contract Works, but the Contractor will be required to undertake whatever quantities may be directed by the Engineer from time to time. The Contract Price for the completed contract shall be computed from the actual quantities of work done, valued at the relevant unit rates and prices.

16) The prices and rates to be inserted in the Schedule/Bill of Quantities are to be the full inclusive prices for the work described under the several items. Such prices and rates shall cover all costs and expenses that may be required in and for the execution of the work described, and shall cover the cost of all general risks, liabilities, and obligations set forth or implied in the documents on which the tender is based, as well as overhead charges and profit. Reasonable prices shall be inserted as these will be used as a basis for assessment of payment for additional work that may have to be carried out.

17) A price or rate is to be entered against each item in the Schedule/Bill of Quantities, whether the quantities are stated or not. An item against which no price is entered will be considered to be covered by the other prices or rates in the Schedule.

18) Except where rates only are required, the Tenderer shall insert all amounts to be included in his total tendered price in the "Amount" column and show the corresponding total tendered price.

19) All prices or rates inserted in the Bill of Quantities shall be Excluding VAT. Provision has been made on the Summary Page, of the Bill of Quantities, for the addition of VAT.

20) Arithmetical errors of responsive tenders will be corrected in the following manner:

- Where there is a discrepancy between an amount shown in figures, and the corresponding amount stated in words, the amount stated in words shall take preference.
- In the Bill of Quantities, if there is an error in the line item total resulting from the product of the quantity and the unit rate, the line item total shall govern, and the rate shall be corrected. Where there is a misplacement of the decimal point in the unit rate, the line item total shall govern and the unit rate will be corrected.
- Where there is an error in the total of the prices either as a result of other corrections required by this checking process or in the tenderer's addition of prices, the total of the prices shall

govern and the tenderer will be asked to revise selected item prices (and their rates in the Bill of Quantities) to achieve the tendered total of the prices.

- Should a tenderer be unwilling to make the corrections ordered by the Project Engineer, the tender may be disqualified.
- 21) The quantities set out in the Price Schedule are the estimated quantities of the Works, but the Contractor will be required to undertake whatever quantities as may be directed by the Engineer from time to time. The Contract Price for the completed contract shall be computed from the actual quantities of work done, valued at the relevant unit rates and prices.
- 22) A price or rate is to be entered against each item in the Price Schedule, whether the quantities are stated or not. An item against which no price is entered or where a word or phrase such as "included" or "provided elsewhere" will be accepted as a rate of nil (R0,00) having been entered against such items and covered by the other prices or rates in the Schedule.

**Note: Any work executed to which such a pay item applies, shall be measured under the appropriate items in the Price Schedule and valued at a rate of nil (R0,00). The rate of nil shall be valid irrespective of any change in the quantities during the execution of the Contract.**

#### **CORRECTION OF ENTRIES MADE BY TENDERER**

*Any entry made by the Tenderer in the Price Schedule, forms, etc, which the tenderer desires to change, shall not be erased or painted out. A line shall be drawn through the incorrect entry and the correct entry shall be written above in black ink and the full signature of the Tenderer shall be placed next to the correction.*

#### **NOTE**

Tenderers are to refer to the Scope of Works and in particular the Specification Data when pricing the Bills of Quantities. Certain clauses in the Standard Specifications and the Particular Specifications have been omitted, amended or added to and these changes must be taken into account when pricing the tender.

As it is not always practical or possible to cross reference every change to the Specifications, the onus rests on the tenderer to ensure that he is aware of the changes and to structure his rates accordingly.

Is to be in line with the Standard Specifications for Road and Bridge Works.

**C2.2 : BILL OF QUANTITIES**

**Upgrading of Mchubakazi Internal Streets & Ngqamakwe Stormwater  
MNQ/SCM/61/23-24**

**SECTION 1 : PRELIMINARY AND GENERAL**

ITEM NO	PAYMENT	DESCRIPTION	UNIT	BILL QTY	RATE	BILL AMOUNT(R)
	SABS 1200A & PS1200A	SECTION 1 : PRELIMINARY AND GENERAL				
1,1	PSA8.3	SCHEDULED FIXED-CHARGE & VALUE RELATED ITEMS				
1.1.1	PSA 8.3.1	Fixed preliminary and general charges	Sum	1		
1.1.2	PSA 8.3.2	Value-related preliminary and general charges	Sum	1		
1,2	PSA 8.4	SCHEDULE TIME-RELATED ITEMS				
1.2.1	PSA 8.4.1	Time-related preliminary and general items	Sum	1		
<b>Total Carried Forward</b>						

**Upgrading of Mchubakazi Internal Streets & Ngqamakwe Stormwater  
MNQ/SCM/61/23-24**

SECTION 2 : ROADS

ITEM NO	PAYMENT	DESCRIPTION	UNIT	QTY	RATE	BILL AMOUNT(R)
	SABS 1200 MF	SECTION : BASE				
		20mm Sandbed	m <sup>3</sup>	1		
		80mm Interlocking Paving Block	m <sup>2</sup>	1		
Total Carried Forward						

**Upgrading of Mchubakazi Internal Streets & Ngqamakwe Stormwater  
MNQ/SCM/61/23-24**

**SECTION 2 : ROADS  
BILL AMOUNT(R)**

ITEM NO	PAYMENT	DESCRIPTION	UNIT	QTY	RATE	BILL AMOUNT(R)
Brought Forward						
2.4	SABS 1200 MK	KERBING AND CHANNELLING				
2.4.1	8.2.2	Fig.8 (KB1022) Roll over kerb with channel as per dwg no. P2282/CD01	m	1		
2.4.2		Fig.12 (KB1029) Edging	m	1		
2.4.3.	8.2.2	Fig.8 (KB1022) Roll over kerb as per dwg no. P2282/CD01	m	1		
2.4.4	8.2.2	Figure 4 Barrier Kerb	m	1		
ANCILLARY ROADWORKS						
PERMANENT TRAFFIC SIGNS						
2.5	8.3.1	Sign faces with painted or galvanized (as stated) back- ground. Symbols, characters, legend, and borders in engineering grade retro- reflective material with sign-boards constructed from				
2.5.1	PSMM1.2	a) Chromadek sheet (2,0 mm thick), of area over 2 m2 and up to 10 m2	m <sup>2</sup>	1		
2.5.2		b) Sheet steel (1,6 mm thick),of area Over and Up to 0 to 1 m2	m <sup>2</sup>	1		
2.5.3		Backing for street names to beas per Cementile Products code No KB 1153 or similarly approved	No.	1		
Total Carried Forward To Summary						

**Upgrading of Mchubakazi Internal Streets & Ngqamakwe Stormwater  
MNQ/SCM/61/23-24**

**SECTION 3 : STORMWATER**

ITEM NO	PAYMENT	DESCRIPTION	UNIT	QTY	RATE	BILL AMOUNT(R)
3.1	1200 LE	SECTION 3 : STORMWATER DRAINAGE				
		Excavation, in preparation of stormwater pipes in select materials, backfill and dispose of surplus/unsuitable material				
3.1.1		0,0 TO 1,0m	m	1		
3.1.2		1,0 TO 1,5m	m	1		
3.1.3		Bedding of trenches to 90% Mod ASSTHO	m <sup>2</sup>	1		
3.2		PIPELINES				
	8.2.1	Supply, handle, lay bed Class 100D. concrete pipe Type Inter locking on Class C bedding				
3.2.1		a) 450mm diam.	m	1		
3.2.2		b) 600mm diam.	m	1		
		b) 900mm diam.	m	1		
3.3		BEDDING				
3.3.1		Compaction in road reserves to 95% Mod AASHTO Bedding	m <sup>2</sup>	1,0		
3.3.2		Provision for bedding where ordered by the Engineer in writing	m <sup>2</sup>	1		
3.4		STORMWATER HEADWALLS				
3.4.1	8.2.8	Construct headwalls complete as per Dwg P2282/CD03	No.	1		
3.5		STORMWATER KERB AND GRATE INLETS				
3.5.1		Construct kerb inlets complete as per Dwg P2282/CD02	No.	1		
3.5.2		Construct catchpits complete as per Dwg P2282/CD05	No.	1		
3.6		STORMWATER MANHOLES				
		Construct manholes complete as per dwg P2282/CD04 up to depth:				
3.6.1		Exceeding 1,0 m but not exceeding 2,0 m	No.	1		
3.6.2		Clean our 2.5m, 0.5deep wide stone pitched channels and remove vegetation	m	1		
3.6.3		Clean out soiled and silted catchpits along road	No	1		
3.6.4		Construct 100mm ,15 Mpa concrete U channels (1m wide x 0.8 deep), with constr joints every 3m	m	1		
3.6.5		Constrct new 450mm dia, 15m long pipe crossings with headwalls on both ends	No	1		
3.6.6		Replace Storm water Kerb Inlet lids with new lids, size as per P2282/CD02	No	1		
3.6.7		Construct new catchpits as per P2282 cd06	No	1		
<b>Total Carried Summary</b>						

**Upgrading of Mchubakazi Internal Streets & Ngqamakwe Stormwater  
MNQ/SCM/61/23-24**

						SECTION 4 : DUCTS
ITEM NO	PAYMENT	DESCRIPTION	UNIT	QTY	RATE	BILL AMOUNT(R)
		SECTION 4 : DUCTS				
4.1	1200 LC	ELECTRICAL DUCTS				
		Excavation for ducts 600mm wide for 2 x 110mm dia. ducts				
4.1.1		Not exceeding 1,2m deep	m	1,0		
		Excavation for ducts 900mm wide for 6 x 110mm dia. ducts in double layer.				
		Not exceeding 1,2m deep				
		Supply, lay, bed and prove:				
4.1.3		110mm uPVC Kabelflex" ducts"	m	1,0		
4.1.4		Imported bedding including royalty and haulage.	m <sup>2</sup>	1,0		
4.2		CABLE MARKERS				
4.2.1		P.C. concrete duct marker as per Cementile Code No MS 2440	No.	1,0		
4.3	8.2.2	EXCAVATION				
	8.2.5	Take delivery from P & T, excavate (not exceeding 1.2m depth), lay, bed, backfill and prove ducts				
4.3.1		100 mm diam. pitch-impregnated fibre pipes	m	1,0		
4.3.2		160 mm diam. uPVC pipes	m	1,0		
4.3.3	8.2.6	IMPORT BEDDING MATERIAL (provisional)	m <sup>2</sup>	1,0		
4.3.4	8.2.8	CABLE ROUTE MARKERS Complete, installed, and record submitted	No.	1,0		
<b>Total Carried Forward To Summary</b>						

**Upgrading of Mchubakazi Internal Streets & Ngqamakwe Stormwater  
MNQ/SCM/61/23-24**

**SUMMARY OF SECTIONS**

SECTION	DESCRIPTION	BILL AMOUNT(R)
1	SECTION 1 : PRELIMINARY AND GENERAL	
2	SECTION 2 : ROADS	
3	SECTION 3 : STORMWATER	
4	SECTION 4 : DUCTS	
	Sub-total	
	Add VAT 15%	
<b>TOTAL TENDER VALUE TO FORM OF OFFER</b>		

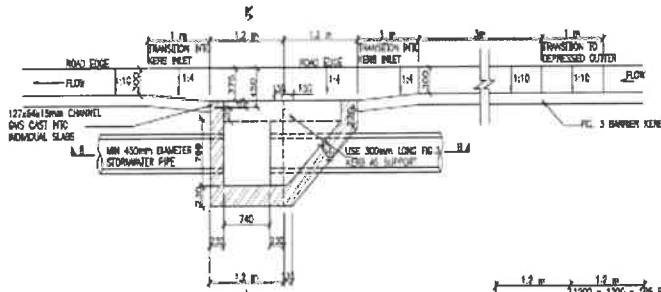
*The undersigned, who warrants that he / she is duly authorised to do so on behalf of the enterprise, confirms that the contents of this schedule are within my personal knowledge and are to the best of my belief both true and correct.*

Signed ..... Date .....

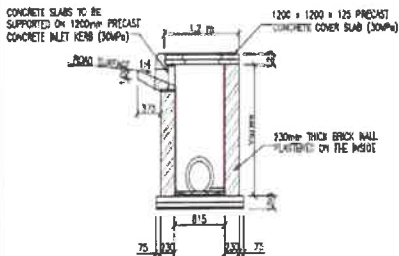
Name ..... Position .....

Tenderer .....

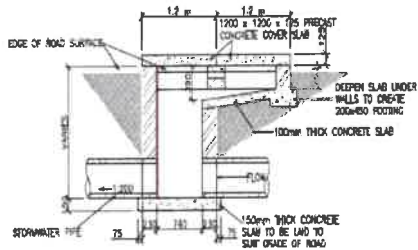
## **DRAWINGS**



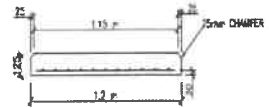
PLAN - 2m KERB INLET  
SCALE 1:40



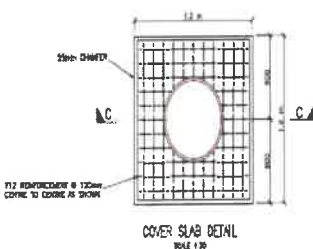
SECTION A - A  
SCALE 1:40



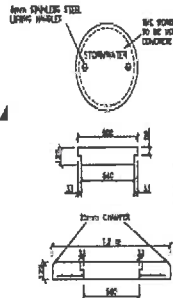
SECTION B-B  
SCALE 1:40



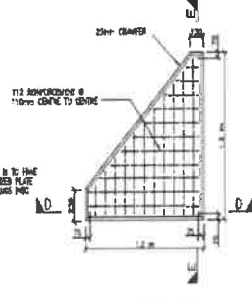
SECTION C - D  
SCALE 1:20



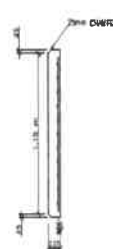
COVER SLAB DETAIL  
SCALE 1:10



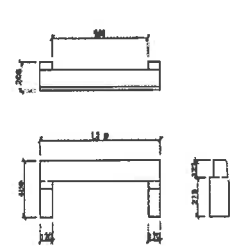
SECTION C - C



INLET COVER SLAB  
SCALE 1:20



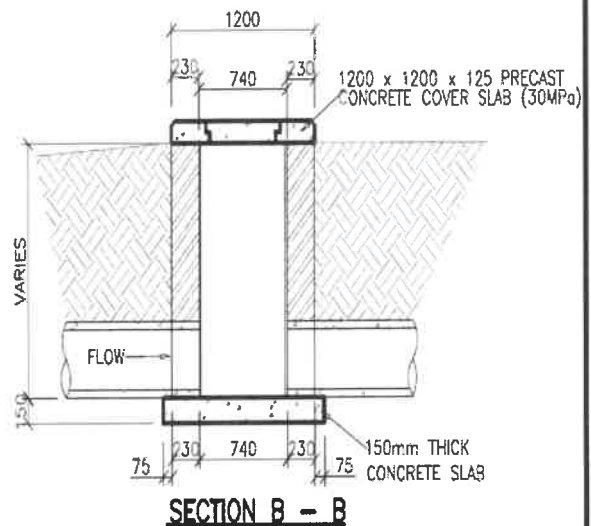
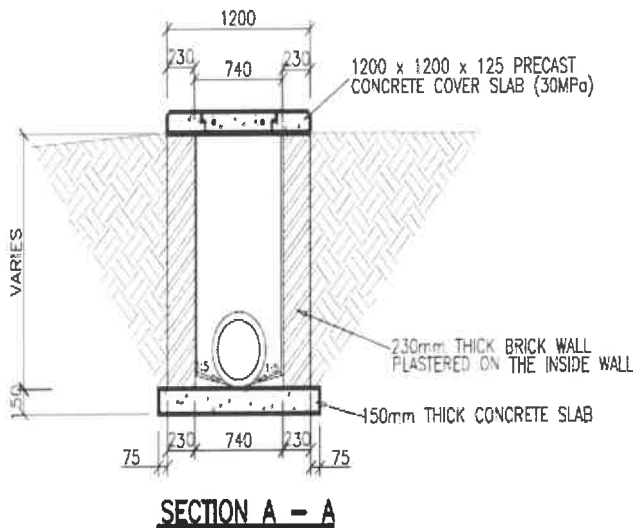
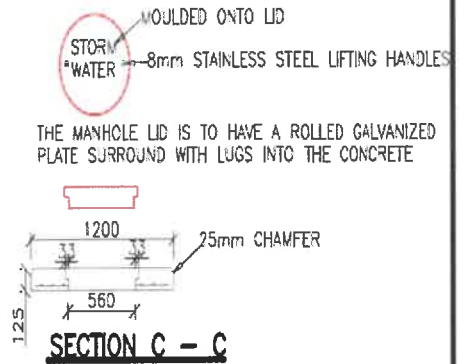
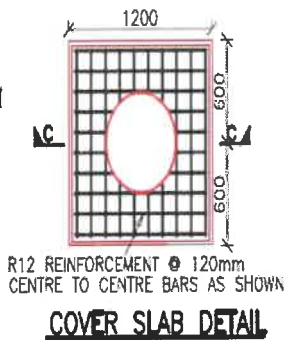
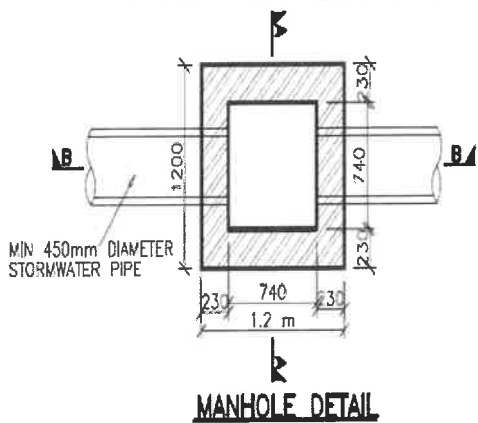
SECTION E - E  
SCALE 1:20



INLET KERB DETAILS  
SCALE 1:20

Date	Revision	Project Title	HSC		
03/05/21	Issued for Report	MNQUMA INTERNAL STREETS	31 St. Marks Road EAST LONDON, S21 7 5JN Tel: 01823 743 9538 Fax: 01823 743 1941 E-Mail: hsc@hsc.co.uk		
Drawing Title		CATCHPIT DETAILS (AT GRADE)	Project No. Dwg No. Rev.		
Scale		AS SHOWN	Date	Dwg. No.	Checked
			03/05/21	N.B	B.G
					P2282 CD02 0





Rev.	Date	Revision
0	15/9/23	Issued for report

Project Title  
**MNQUMA INTERNAL STREETS**

Drawing Title  
**STORMWATER MANHOLE DETAILS**

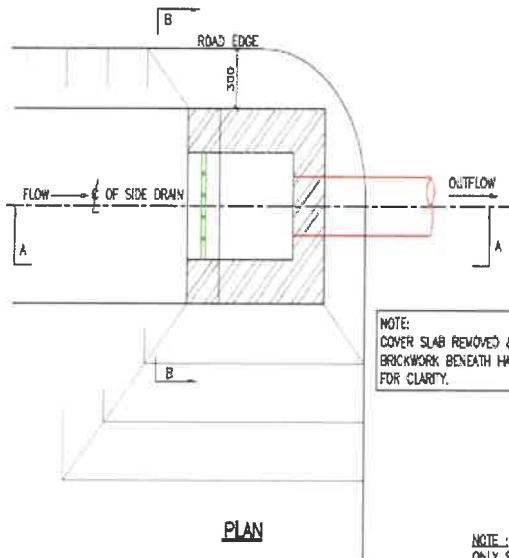
Scale 1 : 40	Date 03/05/21	Drawn N.B.	Checked B.S.G
-----------------	------------------	---------------	------------------



18 St. Marks Road  
East London, 5201  
P O Box 11166  
Southernwood, 5213

tel : (043) 743 9528  
fax : (043) 743 5347  
e-mail : hsc@hsc.co.za

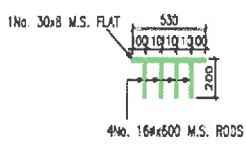
Project No. <b>P2282</b>	Dwg No. <b>CD04</b>	Rev. <b>0</b>
-----------------------------	------------------------	------------------



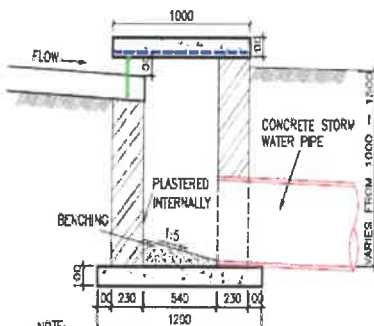
NOTE:  
COVER SLAB REMOVED &  
BRICKWORK BENEATH HATCHED  
FOR CLARITY.

NOTE:  
ONLY SOLID NFX CLAY BRICKS  
WITH CLASS II MORTAR TO BE  
USED.

STEEL CORROSION PROTECTION  
1. CLEANED TO SIS 055900 SA2 FINISH  
2. "COPOX" EPOXY PAINTED

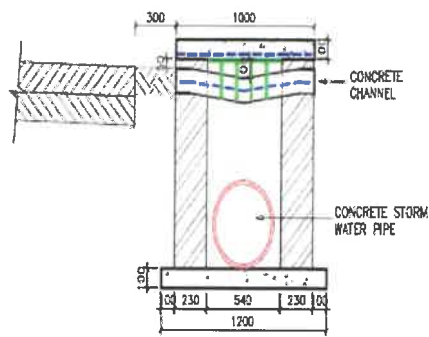


DETAIL OF INLET GRATING



NOTE:  
1. ALL BENCHING TO HAVE STEEL FLOAT FINISH

SECTION A-A



SECTION B-B

Rev.	Date	Revision
0	4/11/21	Issued for tender

Project Title  
**MNQUMA INTERNAL STREET**

Drawing Title  
**CATCH PIT**

Scale 1:25 Date 29/05/15 Drawn T.M. Checked N.B.

25 Schalks Road  
East London, 5201  
P O Box 11166  
Southernwood, 5213  
tel: (043) 743 9528  
fax: (043) 743 5347  
e mail: hsc@hsc.co.za

Project No. **P2282** Draw No. **CD06** Rev. **0**