



## C1.1 Forms of Offer and Acceptance

### Offer

The employer, identified in the acceptance signature block, wishes to enter into a contract for the

#### MAINTENANCE OF ELEVATORS FOR 4 MONTHS

The Contractor, identified in the offer signature block, has examined this document and addenda hereto as listed in the schedules, and by submitting this offer has accepted the conditions thereof.

By the representative of the Contractor, deemed to be duly authorised, signing this part of this form of offer and acceptance, the Contractor offers to perform all the obligations and liabilities of the Contractor under the contract including compliance with all its terms and conditions according to their true intent and meaning for an amount to be determined in accordance with the Conditions of Contract identified in the Contract Data.

<b>The offered total of the Prices exclusive of VAT is</b>	
<b>Value Added Tax @ 15% is</b>	
<b>The total offered amount due inclusive of VAT is</b>	
(in words)	

*(The above amount should be calculated as per the guide provided in the Pricing Data [Subtotal F]. In the event of any conflict between the amount above and the Pricing Data [Subtotal F], the former shall prevail.)*

### for the Contractor

Signature ..... Date .....

Name ..... Capacity .....

(Name and address of organisation) .....  
 .....

Name and signature .....  
 of witness ..... signature .....

This offer may be accepted by the employer by signing the acceptance part of this form of offer and acceptance and returning one copy of this document to the Contractor before the end of the period of validity stated in the tender data, whereupon the Contractor becomes the party named as the Contractor in the conditions of contract identified in the contract data.



## Acceptance

By signing this part of this form of offer and acceptance, the employer identified below accepts the Contractor's offer. In consideration thereof, the employer shall pay the Contractor the amount due in accordance with the conditions of contract identified in the contract data. Acceptance of the Contractor's offer shall form an agreement between the employer and the Contractor upon the terms and conditions contained in this agreement and in the contract that is the subject of this agreement.

The terms of the contract, are contained in:

- Part C1: Agreements and contract data, (which includes this agreement)
  - Part C2: Pricing data and Price List
  - Part C3: Service information.
  - Part C4: Site information
- and schedules, drawings and documents or parts thereof where so indicated.

Deviations from and amendments to the documents listed in the tender data and any addenda thereto as listed in the tender schedules as well as any changes to the terms of the offer agreed by the Contractor and the employer during this process of offer and acceptance, are contained in the schedule of deviations attached to and forming part of this agreement. No amendments to or deviations from said documents are valid unless contained in this schedule.

The Contractor shall within two weeks after receiving a completed copy of this agreement, including the schedule of deviations (if any), contact the employer's agent (whose details are given in the contract data) to arrange the delivery of any bonds, guarantees, proof of insurance and any other documentation to be provided in terms of the conditions of contract identified in the contract data. Failure to fulfil any of these obligations in accordance with those terms shall constitute a repudiation of this agreement.

Notwithstanding anything contained herein, this agreement comes into effect on the date when the Contractor receives one fully completed original copy of this document, including the schedule of deviations (if any). Unless the Contractor (now Contractor) within five working days of the date of such receipt notifies the employer in writing of any reason why he cannot accept the contents of this agreement, this agreement shall constitute a binding contract between the parties.

### for the Employer

Signature ..... Date .....

Name ..... Capacity .....

**Airports Company South Africa,  
3<sup>rd</sup> Floor ACSA North Wing Offices  
O R Tambo International Airport  
Kempton Park  
1627**

Name of witness ..... signature .....



Schedule of Deviations

1 Subject

Details

2 Subject

Details

3 Subject

Details

4 Subject

Details

5 Subject

Details

By the duly authorised representatives signing this agreement, the employer and the Contractor agree to and accept the foregoing schedule of deviations as the only deviations from and amendments to the documents listed in the tender data and addenda thereto as listed in the tender schedules, as well as any confirmation, clarification or changes to the terms of the offer agreed by the Contractor and the employer during this process of offer and acceptance.

It is expressly agreed that no other matter whether in writing, oral communication or implied during the period between the issue of the tender documents and the receipt by the Contractor of a completed signed copy of this Agreement shall have any meaning or effect in the contract between the parties arising from this agreement.



## C1.2 Contract Data

### **Precedence in interpretation of the contract:**

In the event of any ambiguity, inconsistency or conflict between the General Conditions of Contract, Special Conditions, Pricing Data, Service information, or other, the order of precedence shall be as follows:

Firstly, the Contract Data (C1.2) and Conditions of Contract;

Secondly the Pricing data;

Thirdly, the Service information (C3) and Annexes thereto shall prevail;

Fourthly, the additional conditions of contract under these Z clauses

Lastly any schedules, drawings and other documents included with this agreement.

### **General Conditions of Contract**

The General Conditions of Contract comprise the NEC3 Term Service Contract, April 2013, published by the NEC, and the following "Particular Conditions", which include amendments and additions to such General Conditions.

The following Particular Conditions amplify the General Conditions of Contract and highlight areas in that document that require specific attention.

**Wherein in the contract it is stated no contract data is required accordingly the *conditions of contract* remain unaltered as per NEC3 Term Service Contract, April 2013.**



## C1.2a - Data provided by the *Employer*

Clause	Statement	Data
1	<b>General</b>	
	The <i>conditions of contract</i> are the core clauses and the clauses for main Option:	
	dispute resolution Option:	<p>A: Priced contract with price list</p> <p>W1: Dispute resolution procedure</p> <p>X1: Price Adjustment for inflation</p>
	and secondary Options:	<p>X2: Changes in the law</p> <p>X5: Sectional Completion</p> <p>X7: Delay damages</p> <p>X13: Performance Bond</p> <p>X16: Retention</p> <p>X17: Low service damages</p> <p>X18: Limitation of Liability (as amended in Option Z)</p> <p>X19: Task Order</p> <p>X20: Key performance indicators</p> <p>Z: Additional conditions of contract</p>
	of the NEC3 Term Service Contract (April 2013)	
10.1	The <i>Employer</i> is:	Airports Company South Africa SOC Limited (ACSA), Registration No 1993/004149/30, VAT no 4930138393, a juristic person incorporated in terms of the company laws of the Republic of South Africa
	Address	O. R. Tambo International Airport Private Bag X1 3 <sup>rd</sup> Floor ACSA North Wing Offices OR Tambo International Airport 1627
	Tel No.	011 921 6911
10.1	The <i>Service Manager</i> is:	TBA



Address

Tel No.

e-mail

11.2(2)	The <i>Affected Property</i> is	O. R. Tambo International Airport
11.2(13)	The <i>service</i> is	Maintenance of Elevators at O.R. Tambo International Airport, Western Precinct and Cargo building for a period of Four (4) months as more fully set out in section C3 <i>Service Information</i> .
11.2(14)	The following matters will be included in the Risk Register	<p>1. Risk of financial loss and/or injury of 3<sup>rd</sup> parties due to the proximity of the <i>service</i> (or of persons providing the <i>service</i>) to all airport users</p> <p>2. Risk of injury to contract personnel and all airport users due to lifting/moving of heavy objects</p> <p>3. Work in confined spaces</p> <p>4. Work with flammable and toxic gases</p> <p>5 Refer to Annexure C for more risks</p>
11.2(15)	The <i>Service Information</i> is in	Part C3: Employer's Service Information and all documents and drawings and other specifications to which it makes reference
12.2	The <i>law of the contract</i> is the law of	the Republic of South Africa
13.1	The <i>language of this contract</i> is	English
13.3	The <i>period for reply</i> is	3 working days
<b>2</b>	<b>The Contractor's main responsibilities</b>	Detailed in Part C3 (Service Information)
21.1	The <i>Contractor</i> submits a first plan for acceptance within	8 weeks of the Contract Date
<b>3</b>	<b>Time</b>	
30.1	The <i>starting date</i> is	Upon signing of the contract by ACSA
30.2	The <i>Service Period</i> is	Four (4) Months after signing of the contract by ACSA or when the amount in the Form of Offer has been fully expended, whichever occurs first



<b>4</b>	<b>Testing and Defects</b>	No data is required for this section of the <i>conditions of contract</i>
<b>5</b>	<b>Payment</b>	
50.1	The <i>assessment interval</i> is on the	<b>between the 1<sup>st</sup> and 15<sup>th</sup> day of each successive month.</b>
51.1	The <i>currency of this contract</i> is the	<b>South African Rand (ZAR)</b>
51.2	The period within which payments are made is	<b>30 days</b>
51.4	The <i>interest rate</i> is	<b>The prime lending rate of the Nedbank Bank, as determined from time to time.</b>
<b>6</b>	<b>Compensation events</b>	No data is required for this section of the <i>conditions of contract</i> .
<b>7</b>	<b>Use of Equipment Plant and Materials</b>	No data is required for this section of the <i>conditions of contract</i> .
<b>8</b>	<b>Risks and insurance</b>	
83.1	The <i>Employer</i> provides these insurances from the Insurance Table	<p>(i) Insurance against loss of or damage to the <i>services</i>, Plant and Materials comprising Contract Works Insurance, SASRIA Special Risks Insurance and Marine &amp; Air Cargo insurance; and</p> <p>(ii) Insurance (Public Liability Insurance) against liability for loss or damage to property (except the <i>services</i>, Plant and Materials and Equipment) and liability for bodily injury to or death of a person (not an employee of the <i>Contractor</i>) caused by activity in connection with the contract;</p> <p><b>Note: The terms and other matters applicable to these insurances provided by the Employer (and to insurances generally) are detailed in the insurance schedule attached as section C1.5 to the <i>contract</i> ("the Insurance Schedule").</b></p>
83.1	The <i>Contractor</i> provides these additional insurances	<p><b>Professional Indemnity Insurance</b></p> <p><b>Note: The terms and other matters applicable to this insurance provided by the Employer are likewise detailed in section C1.5 to the <i>contract</i>.</b></p>
83.2	The minimum amounts of cover or minimum limits of indemnity required for the insurance table	<b>Refer to section C1.5 Insurance Schedule</b>



83.1	The <i>Employer</i> provides these insurances from the Insurance Table	<b>Refer to section C1.5 Insurance Schedule</b>
83.1	The <i>Employer</i> provides these additional insurances	<b>Refer to section C1.5 Insurance Schedule</b>
83.1	The minimum amount of cover for insurance against loss and damage caused by the <i>Contractor</i> to the <i>Employer's</i> property is	<b>Refer to section C1.5 Insurance Schedule</b>
83.1	The minimum amount of cover for loss of or damage to Plant and Materials provided by the <i>Employer</i> is:	<b>Refer to section C1.5 Insurance Schedule</b>
83.1	The minimum amount of cover for insurance in respect of loss of or damage to property (except the <i>Employer's</i> property, Plant and Materials and Equipment) and liability for bodily injury to or death of a person (not an employee of the <i>Contractor</i> ) arising from or in connection with the <i>Contractor's</i> Providing the Service for any one event is:	<b>Refer to section C1.5 Insurance Schedule</b>
83.1	The minimum limit of indemnity for insurance in respect of death of or bodily injury to employees of the <i>Contractor</i> arising out of and in the course of their employment in connection with this contract for any one event is:	<b>As prescribed by the Compensation for Occupational Injuries and Diseases Act No. 130 of 1993 and the <i>Contractor's</i> common law liability for people falling outside the scope of the Act with a limit of Indemnity of not less than R [●] ([●] Rands)</b>
<b>9</b>	<b>Termination</b>	There is no reference to Contract Data in this section of the core clauses and terms in italics used in this section are identified elsewhere in this Contract Data.
<b>10</b>	<b>Data for main Option clause</b>	
<b>A</b>	<b>Priced contract with price list</b>	
20.5	The <i>Contractor</i> prepares forecasts of the final total of the Prices for the whole of the <i>service</i> at intervals no longer than	<b>4 weeks.</b>





<b>11</b>	<b>Data for Option W1</b>	
W1.1	The <i>Adjudicator</i> is	<p>The person selected from the ICE-SA list of Adjudicators by the Party intending to refer a dispute to him</p> <p>[ICE-SA is a joint Division of the South African Institution of Civil Engineering and the Institution of Civil Engineers (London) (see <a href="http://www.ice-sa.org.za">www.ice-sa.org.za</a> ) or its successor body]</p>
W1.2(3)	The <i>Adjudicator nominating body</i> is:	The Chairman of ICE-SA a joint Division of the South African Institution of Civil Engineering and the Institution of Civil Engineers (London) (see <a href="http://www.ice-sa.org.za">www.ice-sa.org.za</a> ) or its successor body
W1.4(2)	The <i>tribunal</i> is:	arbitration
W1.4(5)	The <i>arbitration procedure</i> is	The latest edition of Rules for the Conduct of Arbitrations published by The Association of Arbitrators (Southern Africa) or its successor body
	The place where arbitration is to be held is	Johannesburg, South Africa
	The person or organization who will choose an arbitrator	The Chairman for the time being or his nominee of the Association of Arbitrators (Southern Africa) or its successor body
<b>12</b>	<b>Data for secondary Option</b>	
X1	Price Adjustment for inflation	The index referred to in this clause shall be deemed to refer to the CPI index on the <i>starting date</i> . Price adjustment for inflation shall only take place on contract anniversary
X2	Changes in the law	No data is required for this secondary Option
X5	Sectional Completion	Completion of installation, commissioning and handover of each elevator.
X17	Low service damages	As per the Service Information (C3) – Annex G
X17.1	The <i>service level table</i> is in	The Service Information, Annex G
<b>X18</b>	<b>Limitation of liability</b>	
X18.1	The <i>Contractor's</i> liability to the <i>Employer</i> for indirect or consequential loss is limited to	Nil - Neither Party is liable to the other for any consequential or indirect loss, including but not limited to loss of profit, loss of income or loss of revenue



X18.2	For any one event, the <i>Contractor's</i> liability to the <i>Employer</i> for loss of or damage to the <i>Employer's</i> property is limited to	<b>The total of the Prices</b>
X18.3	The <i>Contractor's</i> liability for Defects due to his design of an item of Equipment is limited to	<b>The total of the Prices</b>
X18.4	The <i>Contractor's</i> total liability to the <i>Employer</i> , for all matters arising under or in connection with this contract, other than the excluded matters, is limited to	<p><b>The Contractor's total direct liability to the Employer for all matters arising under or in connection with this contract, other than the excluded matters, is limited to the total of the Prices and applies in contract, tort or delict and otherwise to the extent allowed under the law of the contract.</b></p> <p><b>The excluded matters are amounts payable by the Contractor as stated in this contract for:</b></p> <ul style="list-style-type: none"> <li>- Loss of or damage to the Employer's property,</li> <li>- Defects liability,</li> <li>- Insurance liability to the extent of the Contractor's risks</li> <li>- death of or injury to a person;</li> </ul> <p><b>infringement of an intellectual property right</b></p>
X18.5	The <i>end of liability date</i> is	<b>52 weeks after the end of the service period.</b>
<b>X19</b>	<b>Task Order</b>	
X19.5	The <i>Contractor</i> submits a Task Order programme to the <i>Service Manager</i> within	<b>5 days of receiving the Task Order</b>
<b>X20</b>	<b>Key Performance Indicators</b>	
X20.2	A report of performance against each Key Performance Indicator is provided at intervals of	<b>month</b>

<b>Z</b>	<b>The <i>additional conditions of contract</i> are</b>
----------	---

#### AMENDMENTS TO THE CORE CLAUSES

#### **Z1 Interpretation of the law**

**Z1.1 Add to core clause 12.3:** Any extension, concession, waiver, non-enforcement of any terms of the contract or relaxation of any action stated in this contract by the Parties, the *Service Manager*, the, or the *Adjudicator* does not constitute a waiver of rights, and does not give rise to an estoppel unless the Parties agree otherwise and confirm such agreement in writing.



- Z2**                    **Providing the Service: Delete core clause 20.1 and replace with the following:**
- Z2.1**                The *Contractor* provides the *service* in accordance with the *Service* Information and warrants that the results of the *service*, when complete, shall be fit for their intended purpose.
- Z3.**                    **Other responsibilities: add the following at the end of core clause 27:**
- Z3.1**                The *Contractor* shall have satisfied himself, prior to the *starting date*, as to the completeness, sufficiency and accuracy of all information and drawings provided to him as at the *starting date*.
- Z3.2**                The *Contractor* shall be responsible for the correct setting out or carrying out of the *service* in accordance with the original points, lines and levels stated in the *Service* Information or notified by the *Service Manager*. Any errors in the setting or carrying out of the *service* shall be rectified by the *Contractor* at the *Contractor's* own costs.
- Z4.**                    **Termination**
- Z4.1**                **Add the following to core clause 91.1, at the second main bullet, fourth sub-bullet point, after the words “assets or”:** “business rescue proceedings are initiated or steps are taken to initiate business rescue proceedings”.
- Z4.2**                **Add the following to core clause 91.8,** The *Employer* may terminate the Contract in the event that the *Contractor* is unable to maintain an average availability of 95% for a continuous period of twenty-four (24) weeks as measured by ACSA IMCS system (R22).
- Z4.3**                **Add the following to the Termination Table:** If the Employer terminates in terms of this clause 91.8, the procedures on termination are P1, P3 and P4 as stated in clause 92, and the amount due is A1 and A2 as stated in clause 93.
- Z5**                    **Ambiguities and inconsistencies: Delete core clause 17 and replace with the following:**
- Z5.1**                If there is any ambiguity or inconsistency in or between the documents which are part of this contract, the priority of the documents is in accordance with the following sequence:
- Firstly, the Contract Data (C1.2) and Conditions of Contract;
  - Secondly the Pricing data;
  - Thirdly, the Service information (C3) and Annexes thereto shall prevail;
  - Fourthly, the additional conditions of contract under these Z clauses
  - Lastly any schedules, drawings and other documents included with this agreement.
- Z5.2**                The *Service Manager* or the *Contractor* notifies the other as soon as either becomes aware of any such ambiguity or inconsistency in or between the documents which are part of this contract. The *Service Manager* gives an instruction resolving the ambiguity or inconsistency. Notwithstanding any other provision of this contract, any such ambiguity, inconsistency and/or instruction does not automatically result in any increase to the *price list* or any delay to the end of the *service period*.



**Z6 Payment: Add the following at the end of core clause 51:**

**51.5** The *Employer* does not pay interest to the *Contractor* on a late payment resulting from the *Contractor's* failure to provide the *Employer* with a correctly rendered VAT invoice within the period stated in clause 51.1 above.

**51.5** The *Employer* is entitled to deduct from or set off against any money due to the *Contractor*

- any sum due to the *Employer* from the *Contractor* or
- any amount for which the *Contractor* is liable to pay to the *Employer* (whether liquidated or otherwise) arising under this contract.

**AMENDMENTS TO THE SECONDARY OPTION CLAUSES**

**Z7. Changes in Law: Add the following clause to secondary option X2 as X2.2:**

**Z7.1** A change in law is defined as:

**Z7.1.1** the adoption, enactment, promulgation, coming into effect, repeal, amendment, reinterpretation, change in application or other modification after the starting date of any law, excluding (i) the promulgation of any bill, unless such bill is enacted into the *law of the country*, and (ii) any such modification in law relating to any taxes, charges, imposts, duties, levies or deductions that are assessed in relation to a person's income;

**Z7.1.2** any permit being terminated, withdrawn, amended, modified or replaced, other than (i) in accordance with the terms upon which it was originally granted, (ii) as a result of the failure by the *Contractor* to comply with any condition set out therein, or (iii) as a result of any act or omission of the *Contractor*, any subContractor or any affiliate to the *Contractor*.

**Z8. Performance Bond: The following amendments are made to clause X13:**

**Z8.1** **Amend the first sentence of clause X13.1 to read as follows:** The *Contractor* gives the *Employer* an unconditional, on-demand performance bond, provided by a bank or insurer which the *Service Manager* has accepted in his or her discretion, for the amount stated in the Contract Data and in the form set out in Section C1.4 of this Contract Data.

**Z8.2** **Add the following new clause as Option X13.2:** The *Contractor ensures* that the performance bond is valid and enforceable until the end of the *service period*. If the terms of the performance bond specify its expiry date and the end of the *service period* does not coincide with such expiry date, four weeks prior to the said expiry date, the *Contractor* extends the validity of the performance bond until the end of the *service period*. If the *Contractor* fails to so extend the validity of the performance bond, the *Employer* may claim the full amount of the performance bond and retain the proceeds as cash security.

**Z9 Limitation of liability: Insert the following new clause as Option X18.6:**

**Z9.1** The *Employer's* liability to the *Contractor* for the *Contractor's* indirect or consequential loss or damage of any kind is limited to R0.00.



- Z9.2** Notwithstanding any other clause in this contract, any proceeds received from any insurance or any proceeds which would have been received from any insurances but for the conduct of the *Contractor* shall be excluded from the calculation of the limitations of liability listed in the contract.

#### ADDITIONAL Z CLAUSES

**Z10 Cession, delegation and assignment**

- Z10.1** The *Contractor* shall not cede, delegate or assign any of its rights or obligations to any person without the written consent of the *Employer*, which consent shall not be unreasonably withheld. This clause shall be binding on the liquidator/business rescue practitioner /trustee (whether provisional or final) of the *Contractor*.

- Z10.2** The *Employer* may, on written notice to the *Contractor*, cede and delegate its rights and obligations under this contract to any person or entity.

**Z11 Joint and several liability**

- Z11.1** If the *Contractor* constitutes a joint venture, consortium or other unincorporated grouping of two or more persons, these persons are deemed to be jointly and severally liable to the *Employer* for the performance of this Contract.

- Z11.2** The *Contractor* shall, within 1 week of the starting date, notify the *Service Manager* and the *Employer* of the key person who has the authority to bind the *Contractor* on its behalf.

- Z11.3** The *Contractor* does not materially alter the composition of the joint venture, consortium or other unincorporated grouping of two or more persons without prior written consent of the *Employer*.

**Z12. Ethics**

- Z12.1** The *Contractor* undertakes:

- Z12.1.2** not to give any offer, payment, consideration, or benefit of any kind, which constitutes or could be construed as an illegal or corrupt practice, either directly or indirectly, as an inducement or reward for the award or in execution of this contract;

- Z12.1.2** to comply with all laws, regulations or policies relating to the prevention and combating of bribery, corruption and money laundering to which it or the *Employer* is subject, including but not limited to the Prevention and Combating of Corrupt Activities Act, 12 of 2004.

- Z12.2** The *Contractor's* breach of this clause constitutes grounds for terminating the *Contractor's* obligation to Provide the Service in accordance with the procedures stated P2, P3 or P4 in core clause 92.2 or taking any other action as appropriate against the *Contractor* (including civil or criminal action). However, lawful inducements and rewards shall not constitute grounds for termination.

- Z12.3** If the *Contractor* is found guilty by a competent court, administrative or regulatory body of participating in illegal or corrupt practices, including but not limited to the making of offers (directly or indirectly), payments, gifts, gratuities, commission or benefits of any kind, which are in any way whatsoever in connection with the contract with the *Employer*, the *Employer* shall be entitled to terminate the contract in accordance with the procedures stated in core clause 92.2, the amount due on termination is A1.

**Z13 Confidentiality**



- Z13.1** All information obtained in terms of this contract or arising from the implementation of this contract shall be treated as confidential by the *Contractor* and shall not be used or divulged or published to any person not being a party to this contract, without the prior written consent of the *Service Manager*, whose consent shall not be unreasonably withheld.
- Z13.2** If the *Contractor* is uncertain about whether any such information is confidential, it is to be regarded as such until otherwise notified by the *Service Manager*.
- Z13.3** This undertaking shall not apply to –
- Z13.3.1** information disclosed to the employees of the *Contractor* for the purposes of the implementation of this contract. The *Contractor* undertakes to ensure that its employees are aware of the confidential nature of the information so disclosed and that they comply with the provisions of this clause;
- Z13.3.2** information which the *Contractor* is required by law to disclose, provided that the *Contractor* notifies the *Employer* prior to disclosure so as to enable the *Employer* to take the appropriate action to protect such information. The *Contractor* may disclose such information only to the extent required by law and shall use reasonable efforts to obtain assurances that confidential treatment will be afforded to the information so disclosed;
- Z13.3.3** information which at the time of disclosure or thereafter, without default on the part of the *Contractor*, enters the public domain or to information which was already in the possession of the *Contractor* at the time of disclosure (evidenced by written records in existence at that time);
- Z13.4** The taking of images (whether photographs, video footage or otherwise) of the *services* or *Affected Property* or any portion thereof, in the course of providing the *services* or at the end of the service period requires the prior written consent of the *Service Manager*. All rights in and to all such images vests exclusively in the *Employer*.
- Z13.5** The *Contractor* ensures that all his SubContractors abide by the undertakings in this clause.
- Z14** ***Employer's Step-in rights***
- Z14.1** If the *Contractor* defaults by failing to comply with its obligations in terms of this contract and fails to remedy such default within two (2) weeks of the notification of the default by the *Service Manager*, the *Employer*, without prejudice to its other rights, powers and remedies under the contract, or at law may remedy the default either, itself or procure a third party (including any subContractor or supplier of the *Contractor*) to do so on its behalf. The reasonable costs of the *Employer* exercising its step-in rights in respect of any subContractor or supplier of the *Contractor* shall be borne by the *Contractor*.
- Z14.2** The *Contractor* co-operates with the *Employer* and facilitates and permits the use of all required information, materials and other matter (including but not limited to documents and all other drawings, CAD materials, data, software, models, plans, designs, programs, diagrams evaluations, materials, specifications, schedules, reports, calculations, manuals or other documents or recorded information (electronic or otherwise) which have been or are at any time prepared by or on behalf of the *Contractor* under the contract or otherwise for and/or in connection with the *works*) and generally does all things required by the *Service Manager* to achieve this end
- Z15** ***Liens and Encumbrances***
- Z15.1** The *Contractor* keeps the Equipment used to Provide the Service free of all liens and other encumbrances at all times. The *Contractor*, vis-a-vis the *Employer*, waives all and any liens which he may from time to time have, or become entitled to over such Equipment and any part thereof and ensures that his SubContractors similarly, vis-a-vis the *Employer*, waive all liens they may have or become entitled to over such Equipment from time to time





## **Z16 Intellectual Property**

- Z16.1** Intellectual Property ("IP") rights means all rights in and to any patent, design, copyright, trade mark, trade name, trade secret, other intellectual or industrial property rights, technical information and concepts, know-how, specifications, data, formulae, computer programs, memoranda, scripts, reports, manuals, diagrams, drawings, prototypes, drafts and any rights to them created during the performance of the service and include applications for and rights to obtain or use any such intellectual property whether under South African or foreign law.
- Z16.2** IP rights remain vested in the originator and shall not be used for any reason whatsoever other than carrying out the *service*.
- Z16.3** The *Contractor* gives the *Employer* an irrevocable, transferrable, non-exclusive, royalty free licence to use and copy all IP related to the *service* for the purposes of constructing, repairing, demolishing, operating and maintaining the *service* or the *Affected Property*.
- Z16.4** The written approval of the *Contractor* is to be obtained before the *Contractor's* IP made available to any third party which approval will not be unreasonably withheld or delayed. Prior to making any *Contractor's* IP available to any third party the *Employer* shall obtain a written confidentiality undertaking from any such third party on terms no less onerous than the terms the *Employer* would use to protect its IP.
- Z16.5** The *Contractor* shall indemnify and hold the *Employer* harmless against and from any claim alleging an infringement of IP rights ("**the claim**"), which arises out of or in relation to:
- Z16.5.1** the *Contractor's service*;
- Z16.5.2** the use of the *Contractor's* Equipment, or
- Z16.5.3** the proper use of the *Affected Property* on which the service is provided.
- Z16.6** The *Employer* shall, at the request and cost of the *Contractor*, assist in contesting the claim and the *Contractor* may (at its cost) conduct negotiations for the settlement of the claim, and any litigation or arbitration which may arise from it.
- Z17. Dispute resolution: The following amendments are made to Option W1:**
- Z17.1** Under clause W1.3, in the fourth row of the first column of the adjudication table, the following words are added after the words "any other matter": "excluding disputes relating to termination of the contract".
- Z17.2** The following clauses are added at the end of clause W1.3 as sub-clauses (12) and (13) respectively:
- Z17.2.1** "The Adjudicator shall decide the dispute solely on the written submissions of the parties. No oral submissions shall be heard during adjudication."
- Z17.2.2** "Disputes relating to or arising from termination of the Contract shall not be determined by an adjudicator. Any such dispute shall be referred directly to the tribunal in accordance with the procedures set out in clause W1.4."

## **Z18 Day:**



**Z18.1** Any reference to a day in terms of this contract shall be construed as a calendar day.

**Z19 Safety:**

**Z19.1** The *Employer*, *Service Manager* or any of his nominated representatives may stop any unsafe *service*. The *Contractor* does not proceed with the relevant service until the safety violation is corrected. This instruction to stop or not to start the *service* is not a compensation event.

**Z19.2** As stipulated by section 37(2) of the Occupational Health and Safety Act No. 85 of 1993 (**OHS Act**) as amended the Contractor agrees to the following:

**Z19.2.1** As part of the contract, the *Contractor* acknowledges that it is an *Employer* in its own right with duties as prescribed in the OHS Act, as amended and agrees to ensure that all work performed, or equipment and materials used, are in accordance with the provisions of the OHS Act.

**Z19.2.2** The *Contractor* furthermore agrees to comply with the requirements set forth by the *Service Manager* and agree to liaise with the *Employer* should the *Contractor*, for whatever reason, be unable to perform in terms of the clause Z18.

**Z19.3** The *Contractor* acknowledges that it is an *Employer* in its own right and is registered with duties as prescribed in the Compensation for Occupational Injuries & Diseases Act No. 130 of 1993.





## C1.2 b - DATA PROVIDED BY THE *CONTRACTOR*

Clause	Statement	Data
10.1	The Contractor is (Name):	
	Company Registration Number	
	Company VAT Number	
	Address	
	Telephone no.	
	Fax No.	
11.2	The <i>working areas</i> are	See C3 'Service Information'
24.1	The <i>Contractor's Key people</i> are:	<b>CV's to be appended to Resource Proposal (Annex F)</b>
<b>1</b>	<b>SITE MANAGER/SUPERVISOR</b>	
	Name:	
	Qualifications relevant to this contract	
	Experience	
<b>2</b>	<b>Technician (Lift mechanic)</b>	
	Name:	



Qualifications relevant to this contract

Experience

### 3 Assistant Technician

Name:

Qualifications relevant to this contract

Experience

### 4 Storeman

Name:

Qualifications relevant to this contract

Experience

### 5 Others

Name:

Qualifications relevant to this contract

Experience



---

11.2 The following matters will be 1.  
included in the Risk Register

2.

3.

4.

5.

6.

---



## C1.3 Occupational Health and Safety Agreement

### OCCUPATIONAL HEALTH AND SAFETY AGREEMENT

**AGREEMENT IN TERMS OF SECTION 37(2) OF THE OCCUPATIONAL HEALTH & SAFETY ACT (ACT 85 OF 1993) & CONSTRUCTION REGULATION 5.1(k)**

### **OBJECTIVES**

To assist Airport Company South Africa (ACSA) in order to comply with the requirements of:

1. The Occupational Health & Safety (Act 85 of 1993) and its regulations and
2. The Compensation for Occupational Injuries & Diseases Act (Act 130 of 1993) also known as the (COID Act).

**To this end an Agreement must be concluded before any Contractor/ subcontracted work may commence**

**The parties to this Agreement are:**

<b>Name of Organization:</b> <b>AIRPORTS COMPANY SOUTH AFRICA</b> <b>O R TAMBO INTERNATIONAL AIRPORT</b>
<b>Physical Address:</b> <b>Airport Company South Africa</b> <b>OR Tambo International Airport</b> <b>ACSA Building, 4th Floor</b>

**Hereinafter referred to as “Client”**

<b>Name of organisation:</b>
<b>Physical Address:</b>

**Hereinafter referred to as “the Mandatary/ Principal Contractor”**



## MANDATORY'S MAIN SCOPE OF WORK

---



---



---



---

<b>GENERAL INFORMATION FORMING PART OF THIS AGREEMENT</b>
---

1. The Occupational Health & Safety Act comprises of SECTION 1-50 and all unrepealed REGULATIONS promulgated in terms of the former Machinery and Occupational Safety Act No.6 of 1983 as amended as well as other REGULATIONS which may be promulgated in terms of the Act and other relevant Acts pertaining to the job in hand.
2. "Mandatory" is defined as including as agent, a principal Contractor or a Contractor for work, but WITHOUT DEROGATING FROM HIS/HER STATUS IN HIS/HER RIGHT AS AN EMPLOYER or user of the plant
3. Section 37 of the Occupational Health & Safety Act potentially punishes Employers (PRINCIPAL CONTRACTOR) for unlawful acts or omissions of Mandataries (CONTRACTORS) save where a Written Agreement between the parties has been concluded containing arrangements and procedures to ensure compliance with the said Act BY THE MANDATARY.
4. All documents attached or refer to in the above Agreement form an integral part of the Agreement.
5. To perform in terms of this agreement Mandataries must be familiar and conversant with the relevant provisions of the Occupational Health & Safety Act 85 of 1993 (OHS Act) and applicable Regulations.
6. Mandatories who utilise the services of their own Mandatories (Contractors) must conclude a similar Written Agreement with them.
7. Be advised that this Agreement places the onus on the Mandatory to contact the CLIENT in the event of inability to perform as per this Agreement.
8. This Agreement shall be binding for all work the Mandatory undertakes for the client.
9. All documentation according to the Safety checklist including a copy of the written Construction Manager appointment in terms of construction regulation 8, must be submitted 7 days before work commences.



## THE UNDERTAKING

The Mandatary undertakes to comply with:

### INSURANCE

1. The Mandatary warrants that all their employees and/or their Contractor's employees if any are covered in terms of the COID Act, which shall remain in force whilst any such employees are present on the Client's premises. A letter is required prior commencing any work on site confirming that the Principal Contractor or Contractor is in good standing with the Compensation Fund or Licensed Insurer.
2. The Mandatary warrants that they are in possession of the following insurance cover, which cover shall remain in force whilst they and /or their employees are present on the Client's premises, or which shall remain in force for that duration of their contractual relationship with the Client, whichever period is the longest.
  - a. Public Liability Insurance Cover as required by the Subcontract Agreement.
  - b. Any other Insurance cover that will adequately makes provision for any possible losses and/or claims arising from their and /or their SubContractors and/or their respective employee's acts and/or omissions on the Client's premises.

## COMPLIANCE WITH THE OCCUPATIONAL HEALTH & SAFETY ACT 85 OF 1993

The Mandatary undertakes to ensure that they and/or their subContractors if any and/or their respective employees will at all times comply with the following conditions:

1. All work performed by the Mandatary on the Client's premises must be performed under the close supervision of the Mandatary's employees who are to be trained to understand the hazards associated with any work that the Mandatary performs on the Client's premises.
2. The Mandatary shall be assigned the responsibility in terms of Section 16(1) of the OHSAct 85 of 1993, if the Mandatary assigns any duty in terms of Section 16(2), a copy of such written assignment shall immediately be forwarded to the Client.
3. The Mandatary shall ensure that he/she familiarise himself/herself with the requirements of the OHS Act 85 of 1993 and that s/he and his/her employees and any of his subContractors comply with the requirements.
4. The Mandatary shall ensure that a baseline risk assessment is performed by a competent person before commencement of any work in the Client's premises. A baseline risk assessment document will include identification of hazards and risk, analysis and evaluation of the risks and hazards identified, a documented plan and safe work procedures to mitigate, reduce or control the risks identified, and a monitoring and review plan of the risks and hazards.



5. The Mandatary shall appoint competent persons who shall be trained on any Occupational Health & Safety aspect pertaining to them or to the work that is to be performed.
6. The Mandatary shall ensure that discipline regarding Occupational Health & Safety shall be strictly enforced.
7. Any personal protective equipment required shall be issued by the Mandatary to his/her employees and shall be worn at all times.
8. Written safe working practices/procedures and precautionary measures shall be made available and enforced and all employees shall be made conversant with the contents of these practises.
9. No unsafe equipment/machinery and/or articles shall be used by the Mandatary or Contractor on the Client's premises.
10. All incidents/accidents referred to in OHSAct shall be reported by the Mandatary to the Provincial Director: Department of Labour as well as to the Client.
11. No use shall be made by the Mandatary and/or their employees and or their sub Contractors of any of the Client's machinery/article/substance/plant/personal protective equipment without prior written approval.
12. The Mandatary shall ensure that work for which the issuing of permit is required shall not be performed prior to the obtaining of a duly completed approved permit.
13. The Mandatary shall ensure that no alcohol or any other intoxicating substance shall be allowed on the Client's premises. Anyone suspected to be under the influence of alcohol, or any other intoxicating substance shall not be allowed on the premises. Anyone found on the premises suspected to be under the influence of alcohol or any other intoxicating substance shall be escorted off the said premises immediately.
14. Full participation by the Mandatary shall be given to the employees of the Client if and when they inquire into Occupational Health & Safety.



#### **FURTHER UNDERTAKING**

1. Only a duly authorised representative appointed in terms of Section 16.2 of the OHS Act is eligible to sign this agreement on behalf of the Mandatary. The signing power of this representative must be designated in writing by the Chief Executive Officer of the Mandatary. A copy of this letter must be made available to the Client.
2. The Mandatary confirms that he has been informed that he must report to the Client's management, in writing anything he/she deems to be unhealthy and /or unsafe. He has versed his employees in this regard.
3. The Mandatary warrants that he/she shall not endanger the health & safety of the Client's employees and other persons in any way whilst performing work on the Client's premises.
4. The Mandatary understands that no work may commence on the Client's premises until this procedure is duly completed, signed and received by the Client.
5. Non-compliance with any of the above clauses may lead to an immediate cancellation of the contract.





**ACCEPTANCE BY MANDATARY**

In terms of section 37(2) of the Occupational Health & Safety Act 85 of 1993 and section 5.1(k) of the Construction Regulations 2014,

I .....a duly authorised 16.2 Appointee acting for and on behalf of .....(company name) undertake to ensure that the requirements and the provision of the OHS Act 85 of 1993 and its regulations are complied with.

Mandatory – WCA/ Federated Employers Mutual No.....

Expiry date .....

\_\_\_\_\_  
**SIGNATURE ON BEHALF OF MANDATARY**  
(Warrant his authority to sign)

\_\_\_\_\_  
**DATE**

\_\_\_\_\_  
**SIGNATURE ON BEHALF OF THE CLIENT**  
**AIRPORT COMPANY SOUTH AFRICA**

\_\_\_\_\_  
**DATE**



## C1.4 Forms of Securities

**No performance bond or parent company guarantee is required in this contract**

**Pro forma Performance Bond – Demand Guarantee (for use with Option X13)** (to be reproduced exactly as shown below on the letterhead of the Bank providing the Bond / Guarantee)

**Airports Company South Africa SOC Limited**  
**Reg. No 1993/004149/30 VAT no 4930138393**  
**O R Tambo International Airport**  
**Private Bag X1**  
**3rd Floor ACSA North Wing Offices**  
**OR Tambo International Airport**  
**1627**

Bank reference No.

Date:

Dear Sirs,

**Performance Bond – Demand Guarantee for [insert name of Contractor] required in terms of contract [insert Contractor's contract reference number or title]**

1. In this Guarantee the following words and expressions shall have the following meanings:-

1.1	"Bank" means	[Insert name of Bank], [●] Branch, Registration No. [●]
1.2	"Bank's Address" means	[Insert physical address of Bank]
1.3	"Contract" means	the written agreement relating to the Service, entered into between the Employer and the Contractor on or about the [●] day of [●] 20[●] (Contract Reference No. [●]) as amended, varied, restated, novated or substituted from time to time;
1.4	"Contractor" means	[●] a company registered in accordance with the laws of [●] under Registration No [●].
1.5	"Employer" means	Airports Company South Africa SOC Limited, a company registered in accordance with the laws of the Republic of South Africa under Registration Number 1993/004149/30
1.6	"Expiry Date" means	the earlier of <ul style="list-style-type: none"> <li>the date that the Bank receives a notice from the Employer stating that all amounts due from the Contractor as certified in terms of the contract have been received by the Employer and that the Contractor has fulfilled all his obligations under the Contract, or</li> <li>the date that the Bank issues a replacement Bond for such lesser or higher amount as may be required by the Employer.</li> </ul>
1.7	"Guaranteed Sum" means	0% of the sum of Subtotal J, ([●] Rand)
1.8	"Service" means	Maintenance of Elevators set out in the Section C3, Works Information



2. At the instance of the Contractor, we the undersigned \_\_\_\_\_ and \_\_\_\_\_, in our respective capacities as \_\_\_\_\_ and \_\_\_\_\_ of the Bank, and duly authorized thereto, confirm that we hold the Guaranteed Sum at the disposal of the Employer as security for the proper performance by the Contractor of all of its obligations in terms of and arising from the Contract and hereby undertake to pay to the Employer, on written demand from the Employer received prior to the Expiry Date, any sum or sums not exceeding in total the Guaranteed Sum.
3. A demand for payment under this guarantee shall be made in writing at the Bank's address and shall:
  - be signed on behalf of the Employer by a director of the Employer;
  - state the amount claimed ("the Demand Amount");
  - state that the Demand Amount is payable to the Employer in the circumstances contemplated in the Contract.
4. Notwithstanding the reference herein to the Contract the liability of the Bank in terms hereof is as principal and not as surety and the Bank's obligation/s to make payment:
  - is and shall be absolute provided demand is made in terms of this bond in all circumstances; and
  - is not, and shall not be construed to be, accessory or collateral on any basis whatsoever.
5. The Bank's obligations in terms of this Guarantee:
  - shall be restricted to the payment of money only and shall be limited to the maximum of the Guaranteed Sum; and
  - shall not be discharged and compliance with any demand for payment received by the Bank in terms hereof shall not be delayed, by the fact that a dispute may exist between the Employer and the Contractor.
6. The Employer shall be entitled to arrange its affairs with the Contractor in any manner which it sees fit, without advising us and without affecting our liability under this Guarantee. This includes, without limitation, any extensions, indulgences, release or compromise granted to the Contractor or any variation under or to the Contract.
7. Should the Employer cede its rights against the Contractor to a third party where such cession is permitted under the Contract, then the Employer shall be entitled to cede to such third party the rights of the Employer under this Guarantee on written notification to the Bank of such cession.
8. This Guarantee:
  - shall expire on the Expiry Date until which time it is irrevocable;
  - is, save as provided for in 7 above, personal to the Employer and is neither negotiable nor transferable;
  - shall be returned to the Bank upon the earlier of payment of the full Guaranteed Sum or expiry hereof;
  - shall be regarded as a liquid document for the purpose of obtaining a court order; and
  - shall be governed by and construed in accordance with the law of the Republic of South Africa and shall be subject to the jurisdiction of the Courts of the Republic of South Africa.
  - will be invalid and unenforceable if any claim which arises or demand for payment is received after the Expiry Date.
9. The Bank chooses domicilium citandi et executandi for all purposes in connection with this Guarantee at the Bank's Address.

Signed at \_\_\_\_\_ on this \_\_\_\_\_ day of \_\_\_\_\_ 20\_\_



For and on behalf of the Bank

Bank Signatories(s)

Name(s) (printed)

Witness(s)

Bank's seal or stamp




## C1.5 Insurance Schedule

### **Summary of Terms and other Matters Applicable to Employer Provided Insurance**

#### **Part 1:**

##### Notes to Schedule:

- The provision of insurance by the *Employer* does not limit the obligations, liabilities or responsibilities of the *Contractor* under this contract in any way whatsoever (including but not limited to any requirement for the provision by the *Contractor* of any other insurances).
- Unless specifically otherwise stated, capitalised terms in this schedule (other than *Employer*, *Contractor* and *works* where written in italics) have the meaning assigned to them in the relevant policy of insurance.
- This Insurance Schedule is a generic term sheet generally applicable to the Employer's projects. In the circumstances:
  - If this Insurance Schedule reflects the amount of any cover provided by the *Employer* to be higher than the amount required in the Contract Data, the *Employer's* obligation under this Contract is limited to the lower amount; and
  - If this Insurance Schedule provides for any cover which is not stated to be provided by the *Employer* in the Contract Data, the *Employer's* obligation under this Contract is limited to the cover stated in the Contract Data.
- [The terms governing the Employer provided policies of insurance are the terms detailed in the policies themselves. This schedule is merely a summary of the key terms. It is the responsibility of the tenderer to obtain copies of the policies and satisfy itself of the actual terms as required by the tenderer.]

#### **Part 2:**

##### **ACSA Maintenance Contracts Insurance Clause. Insurance Affected by the Employer.**

Notwithstanding anything elsewhere contained in the Contract and without limiting the obligations liabilities or responsibilities of the Contractor in any way whatsoever (including but not limited to any requirement for the provision by the Contractor of any other insurances) the Employer shall effect and maintain as appropriate in the joint names of the Employer , Contractors and Sub-Contractors, Consultants and Sub-Consultants the following insurances which are subject to the terms, limits, exceptions and conditions of the Policy:

- a) **PUBLIC LIABILITY Insurance** – which will provide indemnity against the insured parties legal liability in the event of accidental death of or injury to third party persons and/or accidental loss of or damage to third party property arising directly from the execution of the contract with a limit of indemnity of **R 100 million** in respect of all claims arising from any one occurrence or series of occurrences consequent on or attributable to one source or original cause. The policy will be subject to a Deductible of **R25 000** for Property Damage claims only but **R250 000** where Loss or Damage involves Aircraft.
  - (i) The Employer shall pay any premium due in connection with the insurance affected by the Employer.
  - (ii) The Contractor shall not include any premium charges for this insurance except to the extent that he may deem necessary in his own interests to effect supplementary insurance to the insurance effected by the Employer. The Employer reserves the



right to call for full information regarding insurance costs included by the Contractor.

- (iii) Any further clarification of the scope of cover provided by the Policies arranged by the Employer should be obtained from the Employer.
- (iv) In the event of any occurrence which is likely to or could give rise to a claim under the insurances arranged by the Employer the Contractor shall:
  - (A) in addition to any statutory requirement or other requirements contained in the Contract immediately notify the Employer's Insurance Broker or the Insurers by telephone or telefax giving the circumstances nature and an estimate of the loss or damage or liability
  - (B) complete a Claims Advice Form available from the Insurance Brokers to whom the form must be returned without delay.
  - (C) negotiate the settlement of claims with the Insurers through the Employer's Insurance Brokers and shall when required to do so obtain the Employer's approval of such settlement.

The Employer and Insurers shall have the right to make all and any enquiries to the site of the Works or elsewhere as to the cause and results of any such occurrence and the Contractor shall co-operate in the carrying out of such enquiries.

- (v) The Contractor will be liable for the amount of the Deductible (First Amount Payable in respect of any claim made by or against the Contractor or Sub-Contractors under the insurances effected by the Employer.  
Where more than one Contractor is involved in the same claim the Deductible will be borne in pro-rata amounts by each Contractor in proportion to the extent of each Contractor's admitted claim.
- (vi) Any amount which becomes payable to the Contractor or any of his Sub-Contractors as a result of a claim under the Contact Works Insurance shall if required by the Employer be paid net of the Deductible to the Employer who shall pay the Contractor from the proceeds of such payment upon rectification repair or reinstatement of the loss or damage but this provision shall not in any way affect the Contractor's obligations liabilities or responsibilities in terms of the Contract.  
In respect of any amount which becomes payable as a result of a claim under any Public Liability Insurance the Contractor or his Sub-Contractors shall be required to pay the amount of the Deductible to the Insurer to facilitate settlement of such claim.

#### **Insurance Affected by the Contractor.**

Without in any way detracting from any requirements contained elsewhere in this contract the Contractor and Sub-Contractors shall where applicable, provide as a minimum the following:

- (a) INSURANCE OF CONTRACTORS EQUIPMENT (including tools offices and other temporary structures and contents) and other things (except those intended for incorporation into the Works) brought onto the Site for a sum sufficient to provide for their replacement.
- (b) Insurance in terms of the provisions of the Compensation for Occupational Injuries and Diseases Act No. 130 of 1993 as may be amended or in terms of any similar Workers Compensation and Unemployment Insurance enactment's in the Suppliers' or Sub Supplier's operational, manufacturing or assembly locations.
- (c) Motor Vehicle Liability Insurance comprising (as a minimum) "Balance of Third Party" Risks including Passenger Liability indemnity.
- (d) Public Liability Insurance for an amount sufficient to cover the Contractors obligations in terms of the Deductible of **R25 000** or **R250 000** as stated above.
  - i. The insurances to be provided by the Contractor and his Sub-Contractors shall:



- (A) be affected with Insurers and on terms approved by the Employer.
  - (B) be maintained in force for whatever period the perils to be insured by the Contractor are at risk (including any defects liability period during which the Contractor is responsible for the care of the Works)
  - (C) submit to the Employer the relevant Policy or Policies of Insurance or evidence acceptable to the Employer that such insurances have been affected.
- ii. In the event that the Contractor or his Sub-Contractor receives any notice of cancellation or restrictive modification to the insurance provided to them they shall immediately notify the Employer in writing of such cancellation or restriction and shall advise what action the Contractor or his Sub-Contractor will take to remedy such action.
- If the Contractor fails to effect and keep in force the insurances referred to then the Employer may effect and keep in force any such insurances and pay such premium or premiums as may be necessary for that purpose and from time to time deduct the amount paid by the Employer from any monies due or which may become due to the Contractor or recover same as a debt from the Contractor.

#### **Sub-Contractors**

The Contractor shall:

- a) ensure that all potential and appointed Sub-Contractors are aware of the whole contents of this clause, and
- b) enforce the compliance by Sub-Contractors with this clause where applicable.”

## C2.1 Pricing assumptions: Option A

### The conditions of contract

### How work is priced and assessed for payment

Clause 11 in NEC3 Term Service Contract, April 2013 (TSC3) core clauses and Option A states:

- |  |                    |   |
|--|--------------------|---|
| <p><b>Identified and defined terms</b></p> | <p>11<br/>11.2</p> | <p>(12) The Price List is the <i>price list</i> unless later changed in accordance with this contract.</p> <p>(17) The Price for Services Provided to Date is the total of</p> <p style="padding-left: 40px;">the Price for each lump sum item in the Price List which the <i>Contractor</i> has completed and</p> <p style="padding-left: 40px;">where a quantity is stated for an item in the Price List, an amount calculated by multiplying the quantity which the <i>Contractor</i> has completed by the rate.</p> <p>(19) The Prices are the amounts stated in the Price column of the Price List. Where a quantity is stated for an item in the Price List, the Price is calculated by multiplying the quantity by the rate.</p> |
|--|--------------------|---|

This confirms that Option A is a priced contract where the Prices are derived from a list of items of service which can be priced as lump sums or as expected quantities of service multiplied by a rate or a mix of both. Where it is contemplated that the Price List represents the type of work, quantity and cost thereof which may or not be selected by the Employer, it is important to ensure that service items listed do not create liability on a daily basis if that is not the intention. For example, if the service is maintenance of an installation on an ad hoc or call-off basis which may require the Contractor to be on standby but not permanently on the Affected Property, avoid listing service items which may be treated as preliminary and general (P&Gs) items, whether fixed or time-related such as contractual requirements, establishing on site, offices, storage, ablutions, water supplies, power supply, telecommunications. The Price List should align with the intention of the contract and selection of Option X 19 should be considered. If the Contractor is required to price P&G items ensure that the tender, contract and Price List provides clearly that daily charges are applicable only as necessitated by the specific activity and authorised by the Service Manager. Particular care should be taken when utilising SANS 1200 as a guide for tenderers or for preparing templates for Price Lists in tenders. Avoid referring to the Price List as the Activity Schedule.

### Function of the Price List

Clause 54.1 in Option A states: "Information in the Price List is not Service Information". This confirms that instructions to do work or how it is to be done are not included in the Price List but in the Service Information. This is further confirmed by Clause 20.1 which states, "The *Contractor* Provides the Service in accordance with the Service Information". Hence the *Contractor* does **not** Provide the Service in accordance with the Price List. The Price List is only a pricing document.

### Link to the *Contractor's* plan

Clause 21.4 states "The *Contractor* provides information which shows how each item description on the Price List relates to the operations on each plan which he submits for acceptance". Hence when compiling the *price*



*list*, the tendering Contractor needs to develop his first clause 21.2 plan in such a way that operations shown on it can be priced in the *price list* and result in a satisfactory cash flow in terms of clause 11.2(17).

## Preparing the *price list*

It will be assumed that the tendering Contractor has read Pages 14, 15 and 76 of the TSC3 Guidance Notes before preparing the *price list*. Items in the *price list* may have been inserted by the *Employer* and the tendering Contractor should insert any additional items which he considers necessary. Whichever party provides the items in the *price list* the total of the Prices is assumed to be fully inclusive of everything necessary to Provide the Service as described at the time of entering into this contract.

1 As the *Contractor* has an obligation to correct Defects (core clause 42.1) and there is no compensation event for this unless the Defect was due to an *Employer's* risk, the lump sum Prices and rates must also include for the correction of Defects.

2 If the *Contractor* has decided not to identify a particular item in the *price list* at the time of tender the cost to the *Contractor* of doing the work must be included in, or spread across, the other Prices and rates in the *price list* in order to fulfil the obligation to complete the *service* for the tendered total of the Prices.

3 There is no adjustment to lump sum prices in the *price list* if the amount, or quantity, of work within that lump sum item of service later turns out to be different to that which the *Contractor* estimated at time of tender. The only basis for a change to the Prices is as a result of a compensation event. See Clause 60.1.

4 Hence the Prices and rates tendered by the *Contractor* in the *price list* are inclusive of everything necessary and incidental to Providing the Service in accordance with the Service Information, as it was at the time of tender, as well as correct any Defects not caused by an *Employer's* risk.

5 The Contractor does not have to allow in his Prices and rates for matters that may arise as a result of a compensation event. It should be noted that the list of compensation events includes those arising as a result of an *Employer's* risk event listed in core clause 80.1.

## Format of the *price list*

(From page 76 of the TSC3 Guidance Notes)

Entries in the first four columns in the *price list* in section C2.2 are made either by the *Employer* or the tendering Contractor.

If the *Contractor* is to be paid an amount for the item which is not adjusted if the quantity of work in the item changes, the tendering Contractor enters the amount in the Price column only, the Unit, Expected Quantity and Rate columns being left blank.

If the *Contractor* is to be paid an amount for an item of work which is the rate for the work multiplied by the quantity completed, the tendering Contractor enters the rate which is then multiplied by the Expected Quantity to produce the Price, which is also entered.

If the *Contractor* is to be paid a Price for an item proportional to the length of time for which a service is provided, a unit of time is stated in the Unit column and the expected length of time (as a quantity of the stated units of time) is stated in the Expected Quantity column.



## C2.2 Price List

The following Activity Schedule is provided “as-is” for the benefit of the Contractor. ACSA (the Employer) cannot guarantee that it is complete in all respects. The Contractor is responsible for providing an Activity Schedule which is accurate, complete and in accordance with their proposal. Also, refer to C3 (Service information) for activities that need to be priced. Only items listed in this Activity Schedule may be billed to the Employer.

ACSA reserves the right to vary all the activities according to the rates given in this contract.

### Part 1 - Activity Schedule

#### Part 1a – Preliminaries and General- (All Item mandatory)

Item no.	Activity Description	Total (per year)
1	Airport personnel access permits, vehicle airside access permits – <i>provisional sum</i>	R 2500.00
2	Parking fees – <i>provisional sum</i>	R 5000.00
3	Once-off decals to be affixed on each elevator (total elevators=117) showing, name, address and Telephone number of the maintenance service provider	R 115 000.00
4	Maintenance of elevators and support of Control systems, Cloud BMS, intercoms, Predictive analytics tool updates and analytic visualisations reports	R
5	Other ( <i>please define</i> ):	R
<b>Preliminaries and General Sub-Total A (per year)</b>		<b>R</b>

#### Part 1b – Activity Schedule-(All Item Mandatory )

Item no.	Activity Description	Frequency	Quantity (per Months)	Amount (per single item)	Total ( )
1	Contract Management and administration (including required reporting such as monthly reports, spares inventory management reports, office overheads etc.).	Monthly	4	R	R
2	Insurance (Other, excluding ACSA required insurance)	Monthly	4	R	R
3	All required labour for quarterly preventative maintenance and inspections	Quarterly	1	R	R
4	All required labour for preventative maintenance corrective and inspections	Monthly	4	R	R
<b>Preventative Maintenance Sub-Total B (4 Months)</b>					<b>R</b>

**NB: All labour required will not be charged extra.**

Part 1 is inclusive of corrective maintenance labour and etc

\*The above activity schedule is minimum work required and the Contractor as the subject expect matter on these services they are bidding for **shall fill in any other** activity with prices for “other” activities which they deem necessary to achieve the set out comes on availability, reliability, maintainability, MTTR, MTBF, legislative and all other targets set in this contract. **Should an alternative not**



***be presented, the offer will be deemed as the Contractor's optimal proposal for which they will be liable for.***

**\*\***All rates for all activities including diagnostic and repair shall include all required tools, software, hardware and consumables (including all applicable specialized tools and software, hardware and consumables) Onus is on the Contractor to price correctly).

**\*\*\***It is noted that the required labour resources and skills for this contract is not prescribed in detail. The Contractor is fully responsible to ensure that labour resources remain adequate and competent in order to maintain required service levels, system performance levels and according to all applicable laws and regulations. The Tenderer shall also ensure that all required maintenance is catered for as per the Original Equipment Manufacturer in the pricing above.

**\*\*\*\***Low service damages will be applicable as per the Low service damages table in this contract

### **Labour rates and Mark-up**

Any work not included under part 1 shall be deemed additional work or non-scheduled items and will be charged at the following rates:

#### **Activity Schedule – part 2 (Labour rates and Mark-up - Breakdowns)**

Any work not included under part 1 shall be deemed additional work or non-scheduled items and will be charged at the following rates:

**\***All rates to exclude vat. Subject to mutual agreement between ACSA and the Contractor, the number of staff allocated to the contract may be increased/decreased to cater for special needs that may arise from time to time.

Labour rates shall include all personnel insurance, holidays with pay, incentive bonuses.

**Note:** No labour shall be charged for travel or travelling. Labour time shall be calculated for the time spent on site.

### **LABOUR RATES: (to be filled in)**

Item	Description	Normal hours(R/hour)	Sunday	After hours(R/hour)	
				Saturday	Sunday/public holiday
1	Site Supervisor				
2	Lift Mechanic				
3	Competent operator (Operative/Assi				
4	Storeman				
5	Other				
6					
7					
8					

### **Detail requirements regarding staff**

The Contractor shall continuously ensure that all staff is suitable, able and competent for the duties required of them. Staff must have experience and applicable competencies as per OEM and all legislations in the maintenance and/or installation of Elevators. The Contractor shall continuously ensure that all staff is knowledgeable on all equipment relating to the Elevators.

Note the following minimum below:

#### **SITE MANAGER/TECHNICIAN**

- Must be in a permanent employee of the company.



- The ability to prepare comprehensive reports, sign off all maintenance records and verify that the systems are safe and fit for use on monthly basis.
- Should have working experience in the maintenance and/or installation of Elevators or similar works.
- Have knowledge of relevant regulation or standard

#### TECHNICIAN /TECHNICIAN ASSISTANT

- Must be in a permanent employee of the company.
- Properly trained and competent in category of work that he is required to perform.
- Should have working experience in the maintenance and/or installation of Elevators or similar works.

*Note the following minimum below as per standardised Mechanical resources per infrastructure:*

Description of Key Resources	Minimum Qualifications/Registrations of Key resources	Experience of key resources
Site Supervisor	<ul style="list-style-type: none"> <li>• Completed Apprenticeship in the trade of Lift Mechanic or</li> <li>• Electrical or Mechanical Trade test or</li> <li>• Engineering studies N4 or higher And Any management certificate. and</li> <li>• Any Occupational Health or Safety Training Certificate/course</li> </ul>	<ul style="list-style-type: none"> <li>• Min 3 years experience post qualification in Maintenance of elevators or Installation/modernising of elevators and</li> <li>• Min 3 years supervisory experience post qualification and</li> <li>• Minimum 2 years experience of OHS</li> </ul>
Lift Mechanic (3)	<ul style="list-style-type: none"> <li>• Completed Apprenticeship in the trade of Lift Mechanic and Electrical or Mechanical Trade test or Electrical/Mechanical N5 and Safety Training Certificate</li> </ul>	Min 3 years' experience post qualification in Maintenance or Installation of Lifts And 1 Year experience on OHS
Competent operator (Operative/Assistant)	Mechanical or Electrical N3 And Safety Training Certificate	Min 1 year experience in maintenance of electrical <ul style="list-style-type: none"> <li>• or</li> <li>• Mechanical Equipment</li> <li>• And</li> </ul> 1 Year experience on OHS
Storeman	Certificate In Storemanship Or, Stock & store control certificate; And MS office training certificate	Min 3 years experience post qualification in stock management and or store management



### iii) SPARES and MARK -UP

\***Spares** will be managed using ACSA's manual inventory management system.

The manual inventory management system will include but not limited to;

- Conducting and submission of monthly and quarterly stock count to the Service Manager by the Contractor,
- Keeping up-to-date inventory cards by the Contractor,
- Management of spares movement by the Contractor,
- Keeping an up-to-date inventory file (purchase order and request, work order, delivery note, stock count records, etc.).
- Ensure safety and security of the storeroom by the Contractor as per space given to them.
- The space for spare storage shall be allocated by ACSA to the Contractor and can be a shared space as per space availability.
- Management of inventory by the Contractor as per ACSA inventory procedure

Spares:

Description	Total (excluding VAT)
<b>Subtotal C- provisional sum for spares</b>	<b>R500 000 per month</b>

### Mark-up (third party procured items/services)

#### Contractor to complete

Value of Item or Services	**Mark-up (Contractor to fill in)	Spares amount for budget purposes *Z*	Total mark-up values to be budgeted- (Contractor to fill in)  = (*Z* x Y)
R0 - R2,000	%	R2 000.00	
R2,001 - R5,000	%	R5 000.00	
R5,001 - R10,000	%	R10 000.00	
R10,001 +	%	R73 000.00	
<b>Sub-total D (Third party Mark-up)</b> (Note: Should be part of the form of offer and acceptance)			R

<sup>b</sup>Cost shall be net cost (excluding VAT) of parts delivered to site with all discounts deducted.

\*The inserted amount \*Z\* are for budgeting purposes. The Total mark -up amount in the table is not guaranteed, but the mark-up will be applicable on third party quotations as per requirements of the system. Thus, the Contractor will be held accountable to the mark-up filled in this table.

\*\*The mark-up will be applicable to the total of the third-party quotation not on a single line items in a quotation.



Spares and sub – Contractors work will be charged at cost plus mark-up. VAT shall not form part of mark-up calculations. Cost shall be net cost (excluding VAT) of parts supplied to site with all discounts deducted.

The spares list must be prepared based on tenderers best current spares prices (excl. VAT). The actual costs of spares will be reimbursed on submission of invoices and suppliers supporting documents.

#### **Contract value**

Below, the guide that must be used in estimating the contract value. This amount must be reported as the Contract Value in the corresponding schedules. Tenderers are reminded that this amount is for illustrative purposes only and that ACSA will not be under any obligation to expend the full or any portion of this amount. Monthly contract expenditure will be strictly calculated according to the Activity Schedule as provided above.

#### **4 Months Maintenance of Elevators Expenditure**

Description	Total (excluding VAT)
Sub-total A (Total Preliminary & General)	R
Sub-total B (*All Preventative Maintenance Labour)	R
Sub-total C (Spares provisional sum)	R2 000 000
Sub-total D (Third party Mark-up)	R
<b>*Sub Total E- Total maintenance cost for <u>4 months</u></b>	<b>R</b>



Expenditure over Four (4)-year contract excluding CPI yearly price adjustments (As per Statistic SA)

Description	Total (excluding VAT)
Sub-Total E: December 2023	R
Sub-Total F: January 2024	R
Sub-Total G: February 2024	R
Sub-Total H: March 2024	R
Four (4) Months estimated contract value Sub-Total I	R

\*Contract values will be increased/decreased per the current index stipulated in Statistic SA – Consumer Price Indices - all income groups. **0% escalation should be used for illustrative purposes.**

*The values in this table/contract are not guaranteed, payment will be done as per approved work/activity done and assessments in this contract.*

## C3 Service Information

### DESCRIPTION OF THE WORKS

#### Employer's objectives

The objective is to provide service of Maintenance of Elevators at OR Tambo International Airport, Western Precinct and Cargo building in a sustainable manner at the lowest operating and maintenance costs while ensuring compliance to general safety and aviation related legislation. The Contractor will be appointed directly by the Airports Company of South Africa.

The Contractor will provide Maintenance of Elevators at O.R. Tambo International Airport, Western Precinct and Cargo building for a period of four (4) months. The specifications and requirements in this document comprise the description of the Works. The Contractor will be appointed directly by the Airports Company of South Africa.

Onus is on the Contractor to provide assurance that competent persons would be carrying out all tasks in accordance to all the applicable standards, OEM requirements, procedures, regulations and legislative requirements.

**The maintenance staff is required to be onsite around the clock (24 hours per day), 365 days per year, including public holidays.**

#### Scope of work (OPEX)

The *Contractor* will provide maintenance Services for Elevator infrastructure which is located on the landside and airside of OR Tambo International Airport, Western Precinct and Cargo building. The specifications and requirements in this document comprise the description of the *Service (Annex I)*.

In brief, the Contractor will be responsible for the maintenance of 117 Elevators at O. R. Tambo International Airport., Western Precinct and Cargo building.

The works entails the following:

- **Servicing** - performing routine preventive maintenance as prescribed by the original equipment manufacturer (OEM) specifications and ACSA's planned maintenance activities routes.
- **Minor Repairs** – responding to breakdowns by maintenance personnel and restoring the equipment to a safe working condition.
- **Major Repairs** – responding to major breakdowns that require special skills and that cannot be executed by the maintenance personnel and restoring the equipment to a safe working condition.
- **Call outs** – attend to general call outs for fault finding and restore equipment into safe working conditions.



#### OEM Requirements

The O.E.M recommended the below preventive maintenance for the Elevators:

- ❖ Monthly maintenance
- ❖ Quarterly maintenance
- ❖ Bi- annual maintenance
- ❖ Annual Maintenance

ACSA: O.R Tambo international Airport has since implemented daily inspections for the Elevators ensure compliance and alignment .

#### Condition of the plant

The maintenance history of the equipment has been logged with ACSA Integrated maintenance centre.

- ❖ The list breakdowns and faults experienced and the estimated time for repair on the Elevators are listed on **Annexure F**.
- ❖ The preventative maintenance previously performed on the Elevators are listed on **Annex I**, for the actual work orders with tasks, ACSA Integrated maintenance centre can be contacted to issue actual.
- ❖ A sample of root cause analysis on the Elevators has been attached on **Annex E**. Also, the root cause analysis must be performed, and the Root cause analysis form completed by the Contractor and handed over to ACSA service manager after each breakdown.

#### Site Information

- ❖ The Elevators are located at on the airside and landside at O. R. Tambo International Airport including and Western Precinct Building (refer to Annexure A for a full list of equipment).
- ❖ The airport layout and site information has been provided on **Annex B**.

#### Minimum work requirements and Legislations:

Maintenance of Elevators shall as minimum conform to the following Procedure and or other legislative references (Gazetted Standards or OHS Regulations):

- ❖ ACSA maintenance procedure for Elevators - as provided in **Annex L**.
- ❖ The preventative maintenance previously performed on the Elevators are listed on **Annex I**, for the actual work orders, ACSA Integrated maintenance centre can be contacted on 011 921 6210.

Note: above is the list of minimum regulations and legislative requirements that the Contractor needs to adhere to as mandatory requirements (**work should be carried out by competent people as prescribed in the law and shall be auditable by the employer at any given time**)

#### Access to site

- ❖ Airside training and permit should be completed and issued before accessing airside and commencement of work.
- ❖ AVOP training and permit should be completed and issued before the commencement of work for personnel driving required to drive on airside.
- ❖ Permission must be obtained from ACSA operations and IMC before an equipment can handed over to the Contractor for works and such arrangements must be done prior and timeously.

#### Site Restrictions

- ❖ Airside training and permit should be completed and issued before accessing airside and commencement of work.
- ❖ AVOP training and permit should be completed and issued before the commencement of work for personnel driving required to drive on airside.

- ❖ The safety file should be completed and approved by the safety department before commencement of work. The safety file is a living document and must be continuously updated with all requirements as specified by law. Also, will be auditable from time to time.
- ❖ Personal Protective Equipment should be issued before the commencement of work.

### **Risk**

The are some of the risks identified but not limited to the below and to **Annex E** list.

### **Current Guarantees and warranties to be maintained:**

- ❖ Annex W - N/A

### **Extent of the works**

The Contractor will be fully responsible for meeting all requirements in this document regarding the Works.

For each piece of equipment, all work will be carried out to standards as required by the Original Equipment Manufacturer (OEM) as well as any applicable governing law and/or regulations. Where OEM standards differ from those required by this document the more stringent requirement shall apply. The Contractor will be fully responsible for obtaining (and keeping up to date with) said requirements.

Where, such a need is mutually agreed between the Contractor and the Employer, the Employer shall put in place a "Hotline" (i.e. 24-hour telephonic support by product specialist) agreement with the relevant OEM. In this event the Contractor shall be responsible that such Hotline services are always operational and available, but all costs in this regard shall be carried by the Employer. The Contractor shall NOT add any mark-up to any Hotline related expenses. A "Hotline" agreement shall typically ensure that problems relating to system controls are promptly rectified. It is intended that Hotline agreements will be in place with OEMs for PLC related controls and computerised control systems.

The Contractor will be responsible for providing staff which are sufficiently skilled and qualified for successful execution of the works. The Contractor shall comply with the Minimum Staffing Schedule always – as stipulated in the Annexes. This may be amended by mutual arrangement between the Employer and the Contractor from time to time.

The Contractor shall always remain responsible to ensure that the on-site staff compliment and maintenance regime is sufficient to maintain the service levels and system performance indicators as stipulated in the Annexes. Should the Contractor not be able to maintain adequate system performance indicators due to constraints caused by the Employer, it shall be timeously reported, in writing, to the Contract Manager. Refer to the Annexes for the required system performance indicators.

The Contractor will ensure that his/her staff compliment is of a sufficient quantity to allow for uninterrupted supply of labour in the event of his/her staff taking sick leave, paid leave and will allow for all staff related eventualities.

The Contractor shall continuously ensure that all staff is suitable, able and competent for the duties required of them. The Contractor shall continuously ensure that all staff is knowledgeable and dependable in Elevators maintenance activities/procedures in the area. The Contractor shall further ensure that any staff member reasonably suspected of partaking in criminal activities is immediately removed from site and his permit returned to and/or cancelled at the ACSA Permit Office.

All work shall be performed within the required Response Times – as stipulated in the Annexes. Any breakdown impacting on operations shall be attended-to until restored to good reliable condition. No breakdown may be left unattended or incomplete for the next day or shift. All repair work shall carry a defect free be guaranteed for a period of 3 months after completion of work.

All work shall be charged according to the Activity Schedule. However, no labour shall be charged for any non-scheduled work, repair work or other work when carried out by a scheduled maintenance shift.

The Contractor will be responsible for keeping spares levels up to a sufficient quantity and standard as to comply with the requirements of this contract and will charge the Employer accordingly. All spares will be charged according to the Activity Schedule. The Contractor shall arrange for the spares room. The Contractor shall keep the spares room in a neat and clean state and an updated spares list will always be available on-site. Spares will be neatly arranged and easily locatable via an appropriate index on the spares list. Wherever practicable, a notice will be placed on the rack, next to the spare part, as to where the part is used in the installation. A resource will be dedicated to ensuring that spares are effectively managed and scrapped parts and waste removed from site. The space for spare storage shall be allocated by ACSA to the Contractor and can be a shared space as per space availability.

The Contractor will be responsible for holding all tools and/or special equipment that might be required for the execution of the works, either on site or on their premises in order to comply with the Response Time requirements of this contract. Any exclusion to the above should be clearly communicated in the returnable schedules when submitting the tender.

The Contractor shall ensure that, unless a special arrangement is made with the Service Manager, all senior staff members and on-site support staff is always immediately reachable via cell phone.

The Contractor shall ensure that all maintenance staff are issued with uniforms that will comply with a minimum requirement as agreed with the Service Manager from time to time. Current airport requirements are safety shoes, track suit and a uniquely numbered reflective jacket (for easy identification via CCTV).

#### **Location of the works**

The Works are located at O. R. Tambo International Airport including and Western Precinct Building at various locations – mostly in controlled areas. It is crucial for the Contractor to note that O. R. Tambo International Airport is a National Key Point and governed as such.

### **PROCUREMENT**

#### **Preferential procurement procedures**

##### **Requirements**

The Contractor will respect OEM warranties to the Employer always when procuring spare parts, products or 3<sup>rd</sup> party services. It will be the Contractor's sole responsibility to ensure that OEM warranty requirements are adhered to always.

Where Contractors use or quote on spare parts of a lower quality than recommended by the OEM, or parts not recommended by the OEM, this shall be clearly indicated to the Service Manager on the quotation. This also implies that the Contractor must build relationships with the various key OEM's.

The Contractor must adhere to all airport requirements regarding fire, health and safety when procuring replacement conveyor belts and/or other equipment or spares.

No casual labour (i.e. "off the street" labour) may be employed by the Contractor unless pre-arranged with the Employer. Whenever this is required, the Contractor shall come to a suitable arrangement with the Employer regarding sourcing and screening of such individuals.

### **Subcontracting**

No part of this Contract may be subcontracted unless with written approval from the Employer. the Employer shall be under no obligation to grant such approval. Should any part of this Contract be subcontracted, the Contractor will be responsible for all Works (or failure to affect the Works) as if it was done so by the Contractor.

## **MANAGEMENT**

### **Management of the works**

#### **Particular / generic specifications**

All work shall conform to all relevant SANS standards, OHS ACT regulations and all other legislation that might be relevant to this Contract and the execution thereof.

All work shall be carried out in accordance with prevailing industry norms and best practice and will always comply with OEM requirements.

### **Planning and programming**

All maintenance work shall be scheduled, and a roster presented to the Service Manager at the end of the preceding month. Work shall be scheduled in a manner as not to interfere with any normal airport operations.

Normal airport operational hours shall be **from 04:00 to 24:00** for every day of the year.

As a **minimum** requirement, the Contractor shall roster **scheduled** preventative maintenance activities.

Maintenance teams will attend to scheduled preventative maintenance, non-scheduled maintenance and breakdown maintenance. The Contractor must ensure that no scheduled maintenance work is carried over to the following week.

All Preventative Maintenance shall be scheduled, at least, to the requirements of the annexures (The Contractor must ensure that sufficient allowances for all these items are made with his/her pricing in the Activity Schedule.)

### **Methods and procedures**

The Contractor must accept and respect the fact that the Airport is continuously undergoing construction and improvement and that a variety of stakeholders are involved in the Employer's business. Therefore, within reason and with prior arrangement with the Contractor, the Employer might require the following from time to time:

- Assisting with emergency repairs on
- Assisting with airport operations Re-scheduling of work to accommodate other Contractors
- Allowing access and providing assistance to OEM suppliers to correct defects on equipment and/or systems
- Checking on other Contractors in order to reduce risk to Elevators
- Pointing out services to consultants or other Contractors
- Providing access to other Contractors
- Attending co-ordination and planning meetings
- Removing rubble and/or equipment from site
- Training of ACSA operators and/or technicians
- Training of check-in of Elevators staff
- Providing of system data and/or statistics to ACSA
- Recommending improvements on maintenance procedures
- Recommending improvements on operational procedures
- Co-operating with ACSA Security relating to security issues
- Safe / legal disposal of used and irreparable spares

The Service Manager may instruct operational and works procedures to the Contractor as might be required from time to time. The Contractor will instruct his/her staff accordingly and implement measures to ensure that these procedures are strictly adhered to.

#### **Quality plans and control**

All work must be executed in accordance with prevailing industry norms and standards relating to quality. In this regard, the Contractor will be expected to draft quality plans for the Service Manager from time to time. Emphasis must be on improving system reliability and on ensuring that rostered maintenance work is indeed performed as and when required.

#### **Environment**

The Contractor will keep noise and dust levels to a minimum. At no time, shall his/her work result in nuisance, interference or danger to the public or any other person working at the Airport.

At no time, shall the Contractor:

- allow any pollutive or toxic substance to be released into the air or storm water systems
- interfere with, or put at risk, the functionality of any system or service
- cause a fire or safety hazard

#### **Format of communications**

Work instructions, daily check sheets, monthly maintenance reports, inventory reports, breakdown reports, exception reports, etc. will all be in a format as agreed with the Service Manager.

#### **Key personnel**

A schedule of key personnel to this Contract (as per the Schedules) will be provided to the Service Manager at commencement of this Contract. This will, as a minimum, include all persons from technician level to management level. For the full duration of this Contract, none of these persons will be replaced by a person of lesser ability or qualification. All on-site staff leaves shall be reported and agreed with the Service Manager.

#### **Management meetings**

The Contractor will be expected to attend meetings relating to maintenance, operations, contract management and other issues that may arise from time to time. As far as is practicable, the Contractor will make all required persons available for these meetings. The Contractor shall not submit claims for payment for staff attending any of these meetings.

#### **Electronic payments**

The Contractor should arrange with the Employer's finance department for making all payments electronically.

#### **Daily records**

The Contractor shall keep accurate daily records of staff attendance, maintenance work, safety inspections and exception reports. Records shall be available for scrutiny by the Service Manager at any time. All records shall be in a format as agreed with the Service Manager.

#### **Monthly reports**

When invoicing, the Contractor shall ensure that all required reports for the corresponding month are attached to the monthly invoice. This will include monthly reports on but not limited to:

1. system availability (averaged per week)
2. maintenance work (including % of scheduled maintenance work completed)
3. daily checks performed
4. maintenance plan for the next month
5. the latest spares inventory

6. Assets register up to date including equipment data
7. Root cause analysis records
8. Safety/Environmental or legislative issues and compliance
9. Outstanding maintenance issues

The Contractor shall keep copies of all reports and records for at least 1 year. All reports shall be in a format as agreed with the Service Manager from time to time.

#### **Permits**

The Contractor shall not be compensated for costs relating to the Employer's required permits, or for labour/time spent in obtaining it. An allowance must be made in the Activity Schedule in this regard.

The Contractor must ensure that he/she is, always, familiar with the Employer's safety and security requirements relating to permits for no work to be delayed as a result thereof. This will include the permit application process.

Note that (within reason) the Contractor will have no claim against the Employer if a permit request is refused.

The following table is not all inclusive, but is provided for illustration purposes:

<b>Permit</b>	<b>Required by/for</b>	<b>Department</b>
AVOP – Airside Vehicle Operator permit	All drivers of vehicles on airside	ACSA Safety
Airside Vehicle Permit	All vehicles that enter airside	ACSA Safety
Basement Parking permit	All vehicles allowed to enter the delivery basement	ACSA Parking
Personal permit	All persons employed on the airport	ACSA Security
Cell phone permit	All persons taking cell phones to airside	ACSA Security
Lap top permit	All persons taking lap top computers to airside	ACSA Security
Camera permit	All persons taking cameras or camera equipment to airside	ACSA Security
Hot Works Permit	All welding and/metal cutting work	ACSA Safety

Proof of having attended the airside induction training course is required for all personal permit applications. Persons applying for an AVOP must provide proof of having attended an AVOP course. Fees are levied for these courses. Fees are further levied for all permit renewals and refresher courses - where applicable.

#### **Proof of compliance with the law**

The Service Manager may at any time request from the Contractor reasonable proof that the Contractor is in compliance with a law or regulation.

#### **Health and safety**

##### **Health and safety requirements and procedures**

The Service Manager shall be entitled to fine the Contractor low service damages for each non-conformance to Health and Safety matters. This shall not transfer any of the Contractor's responsibilities in this regard to the Employer by any means.

#### **Price list**



The Contractor shall be fully responsible for compliance to the Occupational Health and Safety Act for all persons, equipment and installations relating to this Contract. The Contractor is expected to sign the undertaking in this regard as attached in the annexes.

It shall be the Contractor's responsibility to ensure that all relevant labour and safety legislation is adhered to in rostering staff.

All persons on company premises shall obey all health and safety rules, procedures and practices. NO SMOKING signs and the prohibition of the carrying of smoking materials in designated areas shall always be obeyed. A copy of the Safety Rules booklet is available on request from the ACSA Safety Department.

All the applicable requirements of the Occupational Health and Safety Act (1993) and Regulations and any amendments thereto, shall be met. Where the OHS Act prescribes certification of competency of persons performing certain tasks, proof of such certification shall be provided to the Service Manager.

The Contractor's Workmen's Compensation fees must be up to date. A copy of the Contractor's WCA registration shall be produced on request.

The following areas in the company are declared as "HOT WORKS PERMIT" areas:

All airside areas

All basement areas

All areas accessible to the public

All enclosed areas

The terminal building

*Any process in the above-mentioned areas involving open flames, sparks, or heat shall be authorised by the issue of a permit to work - obtainable from the ACSA Safety department. Any work done under the protection of a permit to work shall be in strict compliance with every prescription regarding the permit.*

Safety equipment shall be used where applicable (e.g. safety, goggles, boots, harness, etc.) The Contractor, at his/her own expense shall provide such equipment, for his/her employees. The Contractor shall apply the necessary discipline and control to ensure compliance by his workers.

All Contractors must ensure that his/her employees are familiar with the existing emergency procedures and must co-operate in any drills or exercises, which might be held. Emergency / fire equipment and extinguishers shall not be obstructed at any time

No person shall perform an unsafe / unhygienic act or operation whilst on Company premises.

No unsafe/dangerous equipment or tools may be brought onto or used on Company premises. The Company reserves the right to inspect all equipment/tools at any time and to prevent/prohibit their use, without any penalty to the Company and without affecting the terms of the Contract in any way.

The Company reserves the right to act in any way to ensure the safety/security of any persons, equipment or goods on its premises and will not be liable for any costs or loss evoked by the action. This includes the right to search all vehicles and persons entering, leaving or on the premises and to inspect any parcel, package, handbag and pockets. Persons who are not willing to permit such searches may not bring any such items or vehicles onto the premises.

The Contractor shall maintain good housekeeping standards in the area where he is working for the duration of the contract.

At no time, must the Contractor interfere with, or put at risk, the functionality of any Sprinklers and/or fire prevention system. Care must also be taken to prevent fire hazards.

The Contractor is required to issue all staff with standard uniforms. This shall as a minimum include steel-tipped safety shoes/boots, overalls (clearly marked with Contractor's company logo) and numbered reflective jackets (also clearly marked with Contractor's company logo, the team members unique personnel number in a font size to be instructed by the Service Manager). All costs relating to uniforms shall be for the Contractor's account.



**Cell phones and two-way radios**

Use of cell phones on airside is **not** permitted unless the user is in possession of an appropriate Airport permit for the device. Cell phone permit issuing authority lies with the ACSA Security department.

The Contractor will **not** be allowed to use two-way radios at the Airport unless these radios are of the type, model and frequency range as approved by the ACSA IT department.

**Protection of the public**

The Contractor shall take special care in order not to harm or endanger the public in any way. Work shall be sufficiently hoarded and guarded to safeguard children and the general public from injury relating to machinery, work or other.

**Barricades and lighting**

Where hoarding, barricades or lighting is required in the execution of the Works, the Contractor shall provide same at his/her own expense. Hoarding, barricades and lighting shall comply with industry accepted norms and standards and may not be used for purposes of advertising or any other purpose than safeguarding the Works.



**ANNEXES to C3 (Service information)**

<b>Title</b>	<b>Annex number</b>	<b>Applicable or N/A</b>
Schedule of Equipment	Annex A	Applicable
Site information	Annex B	Applicable
Risk assessment	Annex C	Applicable
Previous completed PMs	Annex D	Applicable
Root cause analysis	Annex E	Applicable
Estimated times for breakdowns/faults	Annex F	Applicable
Key Performance Indicators	Annex G	Applicable
OHS Act Appointment by Contractor	Annex H	Applicable
Minimum Maintenance Programme	Annex I	Applicable
Environmental Terms and Conditions	Annex J	Applicable
Maintenance of Elevators Spares List	Annex K	Applicable
ACSA maintenance procedure for Elevators	Annex L	Applicable
IMCC procedure	Annex M	Applicable
Internal and external factors outside the Contractor's control	Annex N	Applicable
ACSA Mechanical Standardised Minimum: legal requirements and minimum competency requirements	Annex O	Applicable
ACSA Inventory management procedure	Annex P	Applicable
Detail Technical Specification	Annex Q	Applicable
Schedule of equipment To Be Replaced	Annex R	Applicable

## ANNEX A

**SCHEDULE OF EQUIPMENT**

The tender must not that this is a close estimate of the number of equipment and systems on site.

**Equipment**

Count	Equipment	Gov No	Type	OEM	Floor	Location	Cost
1	L14A	02/7956	Elevator	IFE	5	TA	
2	L14B	02/L7957	Elevator	IFE	5	TA	
3	FL2	01/L1792	Elevator	Kone	13	TA	
4	L7A	01/L1793	Elevator	Kone	6	TA	
5	L7B	01/L1794	Elevator	Kone	6	TA	
6	L6A	01/L1795	Elevator	Kone	5	TA	
7	L5A	01/L1796	Elevator	Kone	6	TA	
8	L5B	01/L1797	Elevator	Kone	6	TA	
9	L18A	02/7958	Elevator	IFE	6	TA	
10	L18B	02/L7959	Elevator	IFE	6	TA	
11	L17B	01/L1800	Elevator	Kone	6	TA	
12	L17A	01/L1801	Elevator	Kone	6	TA	
13	L15A	01/L1802	Elevator	Kone	3	TA	
14	L15B	01/L1803	Elevator	Kone	3	TA	
15	L16A	02/L7963	Elevator	IFE	6	TA	
16	L16B	02/L7964	Elevator	IFE	3	TA	
17	L20A	PE5846	Elevator	Kone	2	TA	
18	L20B	PE5847	Elevator	Kone	2	TA	
19	CL1	01/L1788	Elevator	Kone	2	TA	
20	CL2	01/L1789	Elevator	Kone	2	TA	
21	CL3	01/L1790	Elevator	Kone	2	TA	
22	CL4	01/L1791	Elevator	Kone	2	TA	
23	IPL1	02/7951	Elevator	IFE	2	North Pier	
24	IPL2	02/L7955	Elevator	IFE	2	North Pier	
25	IPL3	01/L2108	Elevator	Thyssen Krupp	4	North Pier	
26	IPL4	02/7952	Elevator	IFE	4	North Pier	
27	L2A	JE9281	Elevator	Kone	4	TA	
28	L2B	JE9285	Elevator	Kone	4	TA	
29	L32	02/7960	Elevator	IFE	4	TA	
30	L33	JE9280	Elevator	Kone	4	TA	
31	L34A	02/7961	Elevator	IFE	4	TA	
32	L34B	02/7962	Elevator	IFE	4	TA	
33	L35A	02/L7953	Elevator	IFE	4	TA	
34	L35B	02/L7954	Elevator	IFE	4	TA	

35	VIP1	01/L3040	Elevator	Kone	4	TA	
36	L19	01/L2823	Elevator	Kone	4	TA	
37	VIP2	01/L4759	Elevator	Kone	4	TA	
38	ML1	01/L3117	Elevator	Schindler	7	MSP1	
39	ML2	01/L3118	Elevator	Schindler	7	MSP1	
40	ML3	01/L2771	Elevator	Schindler	7	MSP1	
41	ML4	01/L2772	Elevator	Schindler	7	MSP1	
42	ML5	02/L7968	Elevator	IFE	5	MSP1	
43	ML6	02/7969	Elevator	IFE	5	MSP1	
44	ML7	02/7970	Elevator	IFE	5	MSP1	
45	ML8	01/L3448	Elevator	Schindler	8	MSP2	
46	ML9	01/L3449	Elevator	Schindler	8	MSP2	
47	ML10	01/L3524	Elevator	Schindler	8	City Lodge	
48	ML11	01/L3450	Elevator	Schindler	8	City Lodge	
49	ML12	01/L3451	Elevator	Schindler	8	City Lodge	
50	ML13	01/L3452	Elevator	Schindler	8	City Lodge	
51	ML14	01/L3453	Elevator	Schindler	8	City Lodge	
52	MSPTA	01/L9373	Elevator	Schindler	6	MSP	
53	MSPTB	01/L9374	Elevator	Schindler	6	MSP	
54	L1A	01/L547	Elevator	Otis	5	TB	
55	L1B	01/L548	Elevator	Otis	5	TB	
56	L2	02/L7965	Elevator	IFE	6	TB	
57	L3A	01/L550	Elevator	Otis	2	TB	
58	L3B	01/L551	Elevator	Otis	2	TB	
59	L4A	01/L552	Elevator	Otis	4	TB	
60	L4B	01/L553	Elevator	Otis	4	TB	
61	L5A	01/L554	Elevator	Otis	3	TB	
62	L5B	01/L555	Elevator	Otis	3	TB	
63	L6	01/L556	Elevator	Otis	4	TB	
64	L7	01/L557	Elevator	Otis	2	TB	
65	PL1	NE5874	Elevator	Otis	3	TB	
66	PL2	NE5873	Elevator	Otis	3	TB	
67	L1A	01/L2771	Elevator	Schindler	5	TB	
68	L1B	01/L2772	Elevator	Schindler	5	TB	
69	L2A	01/L2812	Elevator	Schindler	4	CTB	
70	L2B	01/L2812	Elevator	Schindler	4	CTB	
71	L2C	01/L2820	Elevator	Schindler	4	CTB	
72	L3	01/L2816	Elevator	Schindler	3	CTB	
73	L4A	01/L2824	Elevator	Schindler	4	CTB	
74	L4B	01/L2813	Elevator	Schindler	4	CTB	
75	L4C	01/L2817	Elevator	Schindler	4	CTB	

76	L5A	01/L2827	Elevator	Schindler	3	CTB	
77	L5B	01/L2821	Elevator	Schindler	3	CTB	
78	L6A	02/L9766	Elevator	IFE	5	CTB	
79	L6B	02/L7967	Elevator	IFE	5	CTB	
80	L7	01/L2828	Elevator	Schindler	3	CTB	
81	L8A	01/L2818	Elevator	Schindler	3	CTB	
82	L8B	01/L2833	Elevator	Schindler	3	CTB	
83	L9A	01/L2834	Elevator	Schindler	3	CTB	
84	L9B	01/L3041	Elevator	Schindler	3	CTB	
85	L10A	01/L3040	Elevator	Schindler	4	CTB	
86	L10B	01/L3299	Elevator	Schindler	4	CTB	
87	L11A	01/L3300	Elevator	Schindler	3	CTB	
88	L11B	01/L2815	Elevator	Schindler	3	CTB	
89	L12	01/L2829	Elevator	Schindler	2	CTB	
90	L15A	01/L2819	Elevator	Schindler	3	CTB	
91	L15B	01/L2826	Elevator	Schindler	3	CTB	
92	L16	01/L2822	Elevator	Schindler	2	CTB	
93	L17A	01/L2830	Elevator	Schindler	4	CTB	
94	L17B	01/L2832	Elevator	Schindler	4	CTB	
95	FL26	01/L243	Elevator	Mitsubishi	12	Freight Agent	
96	FL27	01/L244	Elevator	Mitsubishi	12	Freight Agent	
97	FL28	01/L245	Elevator	Mitsubishi	13	Freight Agent	
98	FL29	01/L246	Elevator	Mitsubishi	12	Freight Agent	
99	FL30	01/L247	Elevator	Mitsubishi	12	Freight Agent	
100	FL31	01/L248	Elevator	Mitsubishi	12	Freight Agent	
101	L37	01/L430	Elevator	Mitsubishi	4	CTB	
102	L9		Elevator	Otis	4	TB	
103	Vimec Stair Lift	V65	Wheelchair stairlift	Vimec	N/A	TB	
104	Vimec Stair Lift	V65	Wheelchair stairlift	Vimec	N/A	TB	
105	Omega Platform		Wheelchair stairlift	Jessen	N/A	TA	
Total Cost							

**Elevator MAINTENANCE at Western Precinct**

Count	WP Block	Lift DoL Unique number	Lift ID number
1	A	01/L8205	Lift -A
2		01/L8206	Lift -B
3		01/L8209	Lift - C
4		01/L8210	Lift - D
5		01/L8211	Lift - E
6	B	01/L8212	Lift - F
7		01/L8213	Lift - G
8		01/L8214	Lift - H
9		01/L8207	Lift - I

10		01/L8208	Lift - J
11	C	01/L8217	Lift - M
12		01/L8218	Lift - N
13		01/L8219	Lift - O
14	Parking	01/L8216	Lift - L
15		01/L8215	Lift - K

**ANNEX B****Site Information****Description**

The *services* are situated on the airside of O. R. Tambo International Airport.

**General Site Conditions**

Temperature (Min - Max)	6°C to 40°C
Relative Humidity	15% to 60%
Wind	28m/s
Height above Sea Level	1,680 m
Slope (Existing/Modified)	Level
Seismic	N/A



Figure 1: OR Tambo international Airport





# O·R·TAMBO

## INTERNATIONAL AIRPORT

AIRPORTS COMPANY SOUTH AFRICA

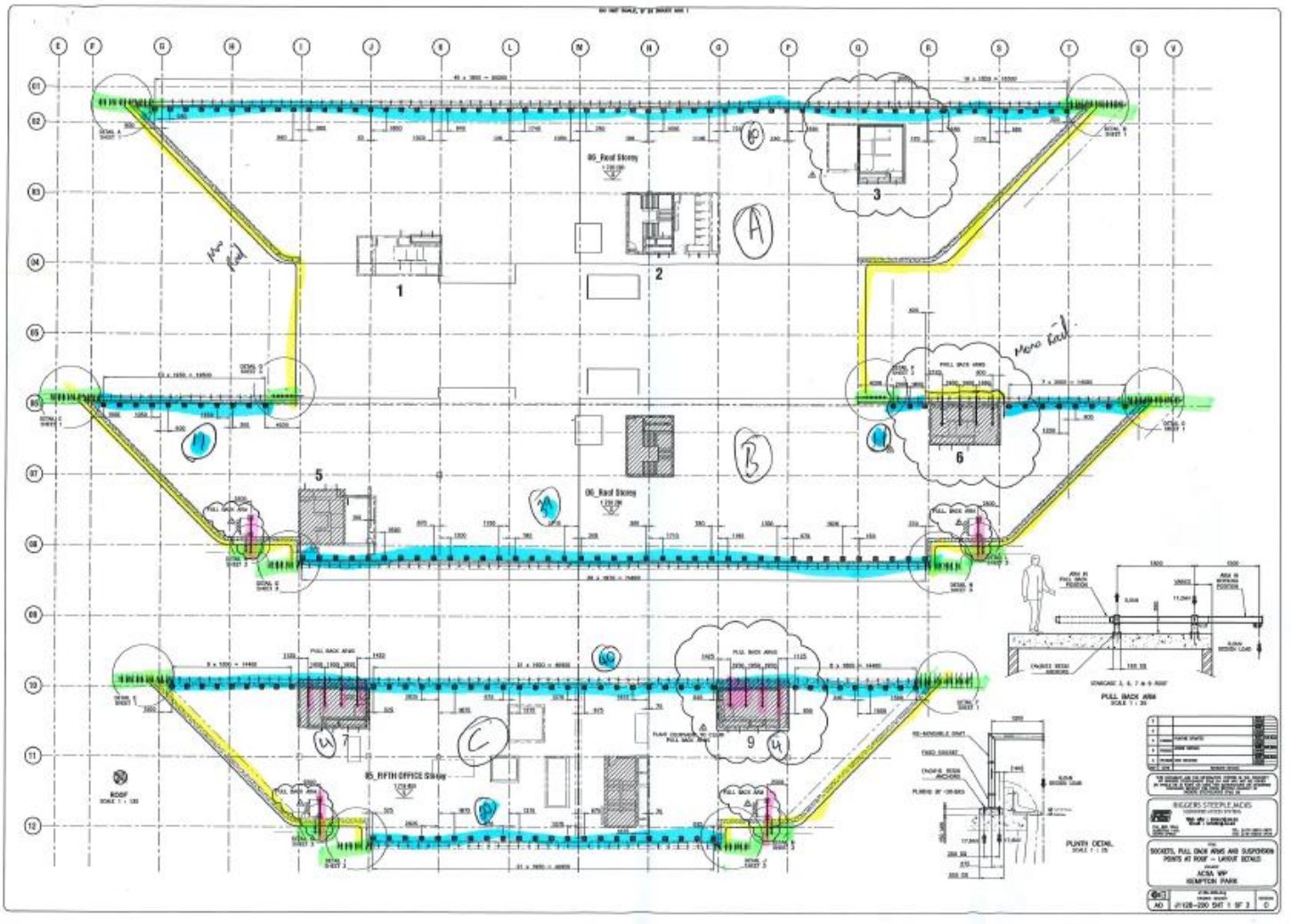


Figure 2: Western Precinct Building



**ANNEX C****Risk assessment****OHS Risks**

Available from the Service manager on request

**Administrative Risks**

<b>Risk Number</b>	<b>Risk Description and mitigation measures</b>
1	Safety File not being 100% compliant or safety/environmental infringement could lead to the Contractor being taken off site
2	Expired COIDA letter; Contractor will be taken off site.
3	Insufficient resources on site to perform the work required roster; Contractor will be penalized accordingly
4	Failure to annually present a compliant Tax Clearance Certificate which is considered a material breach of the conditions of this Contract
5	Not meeting set availability target; Contractor will be penalized and failing rehabilitation contract will be terminated as specified in this contract
6	Not meeting set MTTR target; Contractor will be penalized and failing rehabilitation contract will be terminated as specified in this contract
7	Spares list not being updated could lead to extended equipment down times; Contractor will be penalized and failing rehabilitation contract will be terminated as specified in this contract
8	Root cause analysis not performed could lead to repeated equipment failures; Contractor will be Low service damages will be imposed and failing rehabilitation contract will be terminated as specified in this contract
10	Failure to annually present compliant BEE certificate which is considered a material breach of the conditions of this Contract
11	Contract value being expended before contract expiry date; contract will be terminated
12	Contractor not giving documentation for work assessments and payment on time; Contractor will not be paid on time
13	Updated and compliant safety file regarding Covid 19 PPE and risk assessment, as per OHS and regulation.
14	Any change in the law that is reinforced as per clause X2(Changes in the law)
15	Department of labour as an Electrical Contractor



ANNEX D



**Previously completed PMs**


Available upon request from IMCS

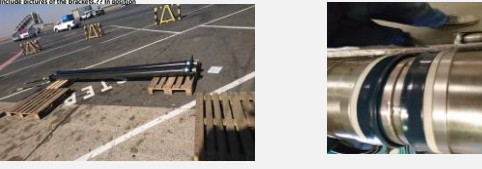
## ANNEX E

Root cause analysis

**Root cause analysis must be done for each failure and the form is per below must be handed over after closing any works.**

ORTIA ME Root Cause Analysis Sheet							
Function failure ( Which function was no longer execute)		Alpha 12passenger loading bridge was not moving due to wheel puncher		Date: 2 December 18	Time of incident:	Reported by/Operator: IMCS Tsholofelo	
The bridge could not drive due to torn wheel							
Asset class: AIRBRIDGE - APRON DRIVE	Asset Description: PLB A12	Total downtime: 25 hours	Warning signs before the breakdown: NO WARNING SIGNS				
Dept: Mech							
Repaired by: E. Opperman	Repair time: 5 hrs	Waiting time: 22.25hrs	Sketch the working principle and the failure mode ( Event which caused functional failure) Include pictures of the brackets.?? In position				
Description fault finding and repair ( what was done to fix the machine/equipment and start operations) The wheel rubber teared off.			 				
Part(s)/component(s) replaced: 1. Bearings, 2. Wheel		Work order/Work Request: UO 342949	Failure mode ( Event which caused functional failure) Torn wheel rubber				
Why1: Was rubber torn	Why2: Shear force 1. Driven over an object 2. Driven with high speed	Why3: out of the expectation was reached 1. Rushing to dock the A/C	Why4: Replacement cycle/ not replaced in cycle 1. Operator not at the loading bridge in time.	Why5:	Counter measures: 1. Operator's procedure to be enforced 2. wheel inspections to be included in the preventive maintenance	Category: <input checked="" type="checkbox"/> Man <input checked="" type="checkbox"/> Machine <input type="checkbox"/> Method <input type="checkbox"/> Material <input type="checkbox"/> Environment	Who:     
							Date complete:

ORTIA ME Root Cause Analysis Sheet																											
Function failure (Which function was no longer executed) Alpha 12 passenger loading bridge was not moving due to wheel puncher				Date: Monday, 20 May 2019		Time of incident: 09:00		Reported by/Operator: LMC / Locomot																			
Passenger loading bridge cannot extend or retract.																											
Asset class: AIRBRIDGE - APRON DRIVE		Asset Description: CLR AL28		Total downtime: 11 Days		Warning signs before the breakdown: ALB struggles to move and is shaking forward and backwards.																					
Dept: Mech		Repair time: 14 hrs		Waiting time: 20 days		Sketch the working principles and the failure mode (Event which caused functional failure)																					
Repaired by: J. Fourie																											
Description of fault finding and repair (what was done to fix the machine/equipment and start operations) Steel wire rope was replaced, set new limits and guide bearings was adjusted.																											
Part(s)/component(s) replaced: 2. Steel wire rope 2. Bearing roller adjustment				Work order/Work Request: WKO 408905		Failure mode (Event which caused functional failure) Steel wire rope damaged																					
<table border="1"> <thead> <tr> <th>Why1: Was the steel wire rope damaged</th> <th>Why2: Cable Tension</th> <th>Why3: Out of the expectancy/rate was reached</th> <th>Why4: Replacement cycle/hot replaced in cycle</th> <th>Why5</th> <th>Counter measures:</th> <th>Category</th> <th>Who</th> <th>Date complete</th> </tr> </thead> <tbody> <tr> <td>Reason of cable incorrect</td> <td>Tension of bearings between terminals</td> <td>Visual inspection to be done prior to use</td> <td>Bearing roller adjustments</td> <td></td> <td>1. Operator's procedure to be informed 2. Steel wire rope tension to be included in inspections 3. Keep spare steel wire rope in stock</td> <td> <input checked="" type="checkbox"/> Man  <input checked="" type="checkbox"/> Machine  <input type="checkbox"/> Method  <input type="checkbox"/> Material  <input type="checkbox"/> Environment </td> <td></td> <td></td> </tr> </tbody> </table>										Why1: Was the steel wire rope damaged	Why2: Cable Tension	Why3: Out of the expectancy/rate was reached	Why4: Replacement cycle/hot replaced in cycle	Why5	Counter measures:	Category	Who	Date complete	Reason of cable incorrect	Tension of bearings between terminals	Visual inspection to be done prior to use	Bearing roller adjustments		1. Operator's procedure to be informed 2. Steel wire rope tension to be included in inspections 3. Keep spare steel wire rope in stock	<input checked="" type="checkbox"/> Man <input checked="" type="checkbox"/> Machine <input type="checkbox"/> Method <input type="checkbox"/> Material <input type="checkbox"/> Environment		
Why1: Was the steel wire rope damaged	Why2: Cable Tension	Why3: Out of the expectancy/rate was reached	Why4: Replacement cycle/hot replaced in cycle	Why5	Counter measures:	Category	Who	Date complete																			
Reason of cable incorrect	Tension of bearings between terminals	Visual inspection to be done prior to use	Bearing roller adjustments		1. Operator's procedure to be informed 2. Steel wire rope tension to be included in inspections 3. Keep spare steel wire rope in stock	<input checked="" type="checkbox"/> Man <input checked="" type="checkbox"/> Machine <input type="checkbox"/> Method <input type="checkbox"/> Material <input type="checkbox"/> Environment																					

ORTIA ME Root Cause Analysis Sheet																											
Function failure (Which function was no longer executed) Bridge had an auto level failure. Cylinder were leaking internally				Date: 09/06/2019		Time of incident: 14:30		Reported by/Operator: LMC																			
This handrail was not turning/moving																											
Asset class: AIRBRIDGE - APRON DRIVE		Asset Description: BLE AL3		Total downtime: 2495 hours		Warning signs before the breakdown: Auto level failure																					
Dept: Mech		Repair time: complete 09-10-2019		Waiting time: 1100 hrs		Sketch the working principles and the failure mode (Event which caused functional failure) Include pictures of the brackets 77 in position.																					
Repaired by: E. Opperman																											
Description of fault finding and repair (what was done to fix the machine/equipment and start operations) Hyd cylinders were leaking internally.																											
Part(s)/component(s) replaced: Hyd cylinders repaired, flush hyd system, new hyd filter				Work order/Work Request: WKO 190338		Failure mode (Event which caused functional failure) Hyd cylinders leaking through																					
<table border="1"> <thead> <tr> <th>Why1: Did it lower by itself</th> <th>Why2: seals collapse</th> <th>Why3</th> <th>Why4</th> <th>Why5</th> <th>Counter measures:</th> <th>Category</th> <th>Who</th> <th>Date complete</th> </tr> </thead> <tbody> <tr> <td>Internal seals were leaking through</td> <td>Hydraulic seals collapse</td> <td></td> <td></td> <td></td> <td>1. Do more regular test on bridge cylinders</td> <td> <input checked="" type="checkbox"/> Man  <input checked="" type="checkbox"/> Machine  <input type="checkbox"/> Method  <input type="checkbox"/> Material  <input type="checkbox"/> Environment </td> <td></td> <td></td> </tr> </tbody> </table>										Why1: Did it lower by itself	Why2: seals collapse	Why3	Why4	Why5	Counter measures:	Category	Who	Date complete	Internal seals were leaking through	Hydraulic seals collapse				1. Do more regular test on bridge cylinders	<input checked="" type="checkbox"/> Man <input checked="" type="checkbox"/> Machine <input type="checkbox"/> Method <input type="checkbox"/> Material <input type="checkbox"/> Environment		
Why1: Did it lower by itself	Why2: seals collapse	Why3	Why4	Why5	Counter measures:	Category	Who	Date complete																			
Internal seals were leaking through	Hydraulic seals collapse				1. Do more regular test on bridge cylinders	<input checked="" type="checkbox"/> Man <input checked="" type="checkbox"/> Machine <input type="checkbox"/> Method <input type="checkbox"/> Material <input type="checkbox"/> Environment																					

### Estimated times for breakdowns/faults

[illegible]

**ANNEX G****Key Performance Indicators****1. Performance objectives**

Normal airport operational hours shall be **from 04:00 to 24:00** for every day of the year but will be confirmed/amended by the Service Manager from time to time. The Contractor must allow for sufficient after-hours work in order for scheduled work not to interfere with airport operations

**Minimum Staffing Schedule**

The Contractor must always maintain the following minimum staff available and should price accordingly but not limited to the listed resources:

<b>Designation</b>	<b>Quantity/Shift</b>	<b>Night Shift</b>
Technician	3	22h00 -05h00
Technician's Assistant	3	22h00 -05h00

<b>Designation</b>	<b>Quantity/Shift</b>	<b>Morning afternoon Shift</b>
Site Manager/Supervisor	1	Working days 08:00 -17:000
Storeman	1	Working days 08:00 -17:000
Technician	2	05h00 – 14h00
Technician's Assistant	3	
Technician	2	14h00 – 22h00
Technician Assistant	3	

\* The Contractor must maintain at all times the above **minimum** staff and should price accordingly but not limited to the listed resources.

The Contractor must have additional resources available to attend to lengthy breakdowns or breakdowns of a specialised nature.

It shall be the Contractor's responsibility to ensure that all relevant labour and safety legislation is adhered to in scheduling staff.

The Contractor shall schedule staff to complete the preventative maintenance schedule accordingly. The Tenderer must ensure that sufficient allowance for all these items is made for in his/her pricing in the Activity Schedule.

**Minimum qualifications of staff for duration of contract**

Description of Key Resources	Minimum Qualifications/Registrations of Key resources	Experience of key resources
<b>Site Supervisor</b>	<ul style="list-style-type: none"> <li>• Completed Apprenticeship in the trade of Lift Mechanic or</li> <li>• Electrical or Mechanical Trade test or</li> <li>• Engineering studies N4 or higher And Any management certificate. and</li> <li>• Any Occupational Health or Safety Training Certificate/course</li> </ul>	<ul style="list-style-type: none"> <li>• Min 3 years experience post qualification in Maintenance of elevators or Installation/modernising of elevators and</li> <li>• Min 3 years supervisory experience post qualification and</li> <li>• Minimum 3 years experience of OHS</li> </ul>
<b>Lift Mechanic</b>	<ul style="list-style-type: none"> <li>• Completed Apprenticeship in the trade of Lift Mechanic and</li> <li>• Electrical or Mechanical Trade test or</li> <li>• Electrical/Mechanical N5 and Safety Training Certificate</li> </ul>	<ul style="list-style-type: none"> <li>• Min 3 years experience post qualification in Maintenance or Installation of Lifts And 1 Year experience on OHS</li> </ul>
<b>Competent operator (Operative/Assistant)</b>	Mechanical or Electrical N3 And Safety Training Certificate	Min 1 year experience in maintenance of electrical or Mechanical Equipment And 1 Year experience on OHS
<b>Storeman</b>	Certificate In Storemanship Or, Stock & store control certificate And MS office training certificate	Min 3 years experience post qualification in stock management and or store management

Reference Requirement to be completed by Reference

## 2. Availability, mean time before failure and mean time to repair.

The Contractor must comply with the following minimum system performance benchmarks:

\*The Period of review shall be Monthly.

Availability	Target
Elevators	99.5%

Description	Call Response time	Call Closure Time
Stops/General calls during normal airport hours	15min	45min
Unlocking Trapped Passengers from the Elevators	15min	30min
Breakdown requiring a field engineer	8 hours	24 hours
Breakdown requiring major repairs	8 hours	72 hours
% of planned maintenance completed per month	100%	

## 3. Emergency Response time

ACSA deems an emergency as a situation caused by unforeseen circumstance. This is only instances where:

- ❖ Delaying sourcing the required goods,
- ❖ Works or services will result in Loss of life or injury,
- ❖ Reputational harm,
- ❖ Financial losses,
- ❖ Legal consequences,
- ❖ Interruption of essential or
- ❖ Business services and
- ❖ Any other relevant consideration

Below are the some of the emergencies identified but not limited to the below list

Description	Call Response time	Call Closure Time
Stops/General calls during normal airport hours	15min	45min
Unlocking Trapped Passengers from the Elevators	15min	30min
Breakdown requiring a field engineer	8 hours	24 hours
Breakdown requiring major repairs	8 hours	72 hours
% of planned maintenance completed per month	100%	



#### 4. Guarantees

The defect free period is defined as that period following completion of the work where no defect directly associated with the Contractors workmanship is detected.

Defect free liability period – preventative maintenance	The defect free period will be no less than the interval between preventative maintenance intervals.
Defect free liability period – corrective or breakdown maintenance	The defect free period will be no less than 90 days.
Defect free liability period – project work	The defect free period will be no less than 12 months.

There are no current (the time of this bid) warranties and guarantees on the infrastructure to be maintained by the Contractor.

#### 5. Assessments and Reviews

- Monthly assessment/review shall be done according to this NEC Term Service contract.
- Safety issues and file reviewed quarterly or as per Safety department frequency.
- Contract shall be Audited and Assessed the from time to time.
- The Contractor will be assessed and scored quarterly also through the ACSA supplier development system or any other ACSA system.

#### 6. Low service damages

##### Notification of Low service damages

The Service Manager will notify the Contractor in writing of any Low service damages.

The Service Manager will also notify the Contractor of any claims directed and incurred by ACSA as a result of the Contractor failure of duties, **this will be for the account of the Contractor.**

The sources of the information shall be all reports and Audit reports which the infrastructure is subjected to (e.g. any authorised ACSA employees and any internal and external audits).

ACSA must notify the Contractor in writing of its intention to claim a Low service damages within 30 days of an event or ACSA will lose its right to claim the Low service damages. Should ACSA not claim a Low service damages for an event it shall not be interpreted that the level of performance is acceptable or that ACSA shall not be entitled to claim Low service damages for similar future events. Under no circumstances shall a Low service damages be regarded as the only action ACSA may take against the Contractor or the only amount it may claim from the Contractor.

#### Low service damages tables

Progressive Punitive low service agreement which are entirely the Contractor's fault shall be applied as below:

Item	Low service damages Criteria	Low service damages amount
Response time	Noncompliance with response times	R10 000,00 per event
Closure duration	Noncompliance with closure duration times	R10 000,00 per week
Closure of corrective work orders	Noncompliance with closure times for corrective maintenance work orders	R2 000,00 per week
Closure of preventative maintenance work orders	All preventative maintenance work orders should be closed within 14 days of issue	R5 000,00 per event
<b>System Availability as Measure by Oracle CMMS (IMCS)</b>	<b>Noncompliance with the system availability</b>	<b>R10 000,00 per system</b>
Other Occupational Health and Safety Act 85 of 1993 which are criminal offences according to the OHS act	Termination after having followed the NEC early warning and risk reduction process	
There is consecutive Occupational Health and Safety Act 85 of 1993 of the same offence/class	Termination after having followed the NEC early warning and risk reduction process	

***\*Availability less than 91% for six consecutive months as measure by the IMCS system (which is the entirely the Contractor's fault) will lead to contract termination.***

#### **Emergency Response time**

ACSA deems an emergency as a situation caused by unforeseen circumstance. This is only instances where:

- ❖ Delaying to source the required goods,
- ❖ Works or services will result in Loss of life or injury,
- ❖ Reputational harm,
- ❖ Financial losses,
- ❖ Legal consequences,
- ❖ Interruption of essential or
- ❖ Business services and
- ❖ Any other relevant consideration

Discretionary annual Contractor's performance review/assessment will be performed to consider the renewal of contract. Should the Contractor's performance deemed below satisfactory the contract will not be renewed upon contract anniversary, therefore the contract will be terminated.

#### Continuous Improvement Program and the Computerized Maintenance Management System

It is hereby required that the Contractor ensures that a continuous improvement program is in place. For example, the criteria below may be used but not only limited to the items mentioned below.

1. An improvement in the availability of systems
2. An improvement on the minimization of spares holding (for example by increasing Mean Time to Failure of components)
3. Etc.

As mentioned above this list is not comprehensive and it is only used for illustrative purposes. Upon implementation of the contract the Employer and the Contractor shall agree targets for the continuous improvement program.

It is important to note that continuous improvement will only apply to those items that meet minimum benchmarks. Continuous improvement initiatives shall be reviewed every quarter or when deemed necessary by the Employer or the Contractor.

The Contractor shall take all reasonable actions to ensure that they facilitate successful implementation and execution of the CMMS. The Contractor shall before each anniversary date of the Contract investigate available CMMS data and report if savings can be achieved on the Contract for the next year. This may also include savings on the Contract monthly maintenance amount.

#### **Internal and external factors**

A list of some of the internal and external factors which may affect equipment SLAs / availability and are beyond the Contractor's control are listed in **Annex T**. In such an event the Contractor will not pay for low services damages which were caused by factors which were proven to be beyond the Contractor's control.

#### **MAINTENANCE RECORD SHEETS**

When maintenance is performed, record sheets must be completed and signed off by both the Technician and an ACSA representative.

These record sheets must be stored for the duration of the contract and should be available for inspection at any time. **The lack of complete history files will result in immediate cancellation of the contract.**

All record sheets, job cards, history reports etc. will stay the property of ACSA and should be available on request. At the end of the contract period a complete set of documentation must be handed over to ACSA.

The Contractor shall further provide copies of these record sheets to the ACSA contract manager by the fifth day of every month. **No money will be paid out if record sheets are not handed in.**



**ANNEX H**

**OCCUPATIONAL HEALTH AND SAFETY AGREEMENT  
IN TERMS OF SECTION 37(2) OF THE OCCUPATIONAL HEALTH & SAFETY ACT (ACT 85 OF 1993) &  
CONSTRUCTION REGULATION 5.1(k)**

This form is in C1.3 in this contract and must be filled in by the Contractor

**ANNEX I****Minimum Maintenance Programme**

The Tenderer shall include a suggested maintenance programme that must attempt to cover all requirements under this contract. The below list should be used as a minimum. The responsibility lies with the Contractor in ensuring compliance to OEM instructions

<b>Legislative Records / Certificates and Maintenance records needed</b>	<b>Frequency of records</b>
Annex A - Certificate of Commissioning acceptance test for electric lifts (SANS 1545-1)	<ul style="list-style-type: none"> <li>• Before a people mover is put into use for the first time</li> <li>• After any modification has been effected</li> <li>• After a failure that could have endangered lives of users</li> <li>• Whenever there has been a change in the competent lift service provider</li> <li>• Every 24 months</li> </ul>
Annex A - Certificate of commissioning acceptance test for Elevators and passenger conveyors (SANS 1543)	
Annex B - Comprehensive report for Electric Lifts (SANS 1545-1)	
Annex B - Comprehensive report for Elevators and Passenger conveyors (SANS 1543)	

### Maintenance Schedule for Elevators

Monthly Maintenance	
Item	Description
1	Check for no admittance sign on motor room door
2	Check function of barrel bolt
3	Check function of motor room lock
4	Check function of motor room door
5	Check function of windows
6	Check function of ventilation
7	Check function of lights
8	Check function of diagrams
9	Check function of brake
10	Check function of main ropes
11	Check function of rope selector
12	Check function of rope governor
13	Check function of limits and overrun
14	Check function of safeties
15	Lubricate motor bearings
16	Lubricate pedestal bearings
17	Lubricate gearbox
18	Lubricate sheaves
19	Clean motor room
20	Check function of car safety edge
21	Check function of car door photocell
22	Check function of car alarm
23	Check function of car lights
24	Check function of car emergency light
25	Check function of car intercom
26	Check function of car push buttons
27	Check function of car indicator lamps
28	Check function of car direction arrows
29	Check function of car gongs
30	Check function of car handrails
31	Check function of car Egg crating
32	Check function of car levels

33	Check function of car inspection control
34	Check function of car inspection lights
35	Check function of car safeties
36	Lubricate car sheaves
37	Lubricate car oil lubricator
38	Clean car platform
39	Check function of shaft locks and door locking devices
40	Check function of shaft landing buttons
41	Check function of shaft indicator lamps
42	Check function of shaft direction arrows
43	Check function of shaft telephone plate
44	Check function of shaft gongs
45	Check function of shaft hinges
46	Check function of shaft closers
47	Check function of shaft handles
48	Check function of shaft beadings
49	Check function of shaft vision panels
50	Check function of shaft pit lights
51	Check function of shaft pit ladder
52	Check function of shaft pit switches
53	Lubricate hinges
54	Clean pit sheaves
55	Lubricate pit sheaves
56	Clean pit
57	All services and checks must be done in compliance with SANS 50081-1
58	Check counterweight

Quarterly Maintenance	
Item	Description
1	ELEVATOR/TYPE A CAR SERVICE
2	Check function/adjust/overhaul/renew/replace door hangers
3	Check function/adjust/overhaul/renew/replace door tracks
4	Check function/adjust/overhaul/renew/replace door sill
5	Check function/adjust/overhaul/renew/replace door slippers
6	Check function/adjust/overhaul/renew/replace door bolt
7	Check function/adjust/overhaul/renew/replace door brake
8	Check function/adjust/overhaul/renew/replace door chain or V-belt
9	Check function/adjust/overhaul/renew/replace door switches
10	Check function/adjust/overhaul/renew/replace RC motor
11	Check function/adjust/overhaul/renew/replace RC linkage
12	Check function/adjust/overhaul/renew/replace door setting
13	Check function/adjust/overhaul/renew/replace door pressure
14	Check function/adjust/overhaul/renew/replace PC unit
15	Check function/adjust/overhaul/renew/replace Bi-stable
16	Check function/adjust/overhaul/renew/replace magnetic switch
17	Check function/adjust/overhaul/renew/replace car suspension
18	Check function/adjust/overhaul/renew/replace car guide shoes
19	Check function/adjust/overhaul/renew/replace CWT suspension
20	Check function/adjust/overhaul/renew/replace CWT shoes
21	Check function/adjust/overhaul/renew/replace compensating chain
22	Check function/adjust/overhaul/renew/replace ropes and contact
23	Check function/adjust/overhaul/renew/replace safety gear
24	Check function/adjust/overhaul/renew/replace trailing cable
25	Clean ropes
26	Lubricate ropes
27	Clean car
28	Clean door drive
29	Lubricate door drive
ELEVATOR/TYPE B SHAFT SERVICE	
30	Check function/adjust/overhaul/renew/replace door hangers
31	Check function/adjust/overhaul/renew/replace door tracks
32	Check function/adjust/overhaul/renew/replace door sill
33	Check function/adjust/overhaul/renew/replace door slippers



34	Check function/adjust/overhaul/renew/replace tension weights
35	Check function/adjust/overhaul/renew/replace door hinges
36	Check function/adjust/overhaul/renew/replace door closers
37	Check function/adjust/overhaul/renew/replace landing doors
38	Check function/adjust/overhaul/renew/replace door cords
39	Check function/adjust/overhaul/renew/replace door chains
40	Check function/adjust/overhaul/renew/replace door contacts
41	Check function/adjust/overhaul/renew/replace limits and switches
42	Check function/adjust/overhaul/renew/replace guide brackets
43	Check function/adjust/overhaul/renew/replace landing board
44	Check function/adjust/overhaul/renew/replace pit switches
45	Check function/adjust/overhaul/renew/replace pit sheaves
46	Check function/adjust/overhaul/renew/replace slack rope contact buffers
47	Check function/adjust/overhaul/renew/replace compensating sheaves ropes and chains
48	Lubricate car counterweights guides
49	Lubricate landing doors
50	Clean landing tracks
51	Clean landing sills
52	Clean car tracks
53	Clean car sill
54	Clean hinges
55	Clean closers
ELEVATOR/TYPE D MOTOR ROOM SERVICE	
56	Check function/adjust/overhaul/renew/replace main switch
57	Check function/adjust/overhaul/renew/replace control voltage (Check reverse phase)
58	Check function/adjust/overhaul/renew/replace fuses
59	Check function/adjust/overhaul/renew/replace star delta
60	Check function/adjust/overhaul/renew/replace controllers
61	Check function/adjust/overhaul/renew/replace selectors
62	Check function/adjust/overhaul/renew/replace contactors
63	Check function/adjust/overhaul/renew/replace relays
64	Check function/adjust/overhaul/renew/replace contacts
65	Check function/adjust/overhaul/renew/replace commutators
66	Check function/adjust/overhaul/renew/replace brushes
67	Check function/adjust/overhaul/renew/replace slip rings
68	Check function/adjust/overhaul/renew/replace coupling and bearing play
69	Check function/adjust/overhaul/renew/replace thrust bearing (noise)

70	Check function/adjust/overhaul/renew/replace friction main sheave
71	Check function/adjust/overhaul/renew/replace starter centrifugal switch
72	Check function/adjust/overhaul/renew/replace limit switches
73	Check function/adjust/overhaul/renew/replace speed governor
74	Check function/adjust/overhaul/renew/replace hydraulic brake
75	Check function/adjust/overhaul/renew/replace gearless brake
76	Check function/adjust/overhaul/renew/replace piston oil seal
77	Check function/adjust/overhaul/renew/replace oil tank level
78	Lubricate selector gears
79	Lubricate reverse gear
80	Lubricate brake gear
81	Lubricate brake pivots
82	Lubricate motor bearings
83	Lubricate generator bearings
84	Lubricate sheaves
85	Lubricate diverters
86	Lubricate hydraulic brakes
87	Clean machine
88	Clean selector gears
89	Clean governor
90	Lubricate governor
91	Clean main motor
92	Clean all fans
93	All services and checks must be done in compliance with SANS 1545

**Contract start-up proposal**

The Tenderer shall include the start-up proposal for the maintenance contract. It must include timelines and the number of equipment (per category and total) that must be serviced per month. The total number of equipment is indicated in schedule of equipment (Annex F) or reflected below. The proposal must be such that monthly preventive maintenance hours are distributed evenly over the months of the year. The tenderer must develop a reasonable maintenance plan. The number of equipment to be serviced every month must be indicated for each category as well as the monthly total. The figure below is a typical plan for January which repeats over the rest of the year with the corresponding estimated number of equipment per month. The tenderer to issue a more detailed and accurate plan after award of tender.

Service category	Jan.			F	M	A	M	J	J	A	S	O	N	D	Units/month	
															Estimated	Proposed
M, Q, S, A															166.7	
M, Q, S															166.7	
M, Q															333.3	
M															1333.3	
Total															2,000	

M= Monthly service, Q=Quarterly service, S= Semi-annual service, A=

Annual service M, Q, S, A: Equipment that undergo all four services in a month

M, Q, S: Equipment that undergo three services in a month

M, Q: Equipment that undergo two services in a month

M: Equipment that undergo one service in a month

The tenderer must also show on the plan his resources (e.g. John, Peter, Abe, etc.) allocation to complete each category of service. It is assumed 20 working days per month, 7 working hours per day and one unit serviced per one hour. Clearly explain the plan and show how objectives will be achieved. Please ensure a same resource is not used where tasks that overlap. Show start and end dates of each category of service.

**ANNEX J (Contractor to fill in)**

**ACSA SERVICE & MAINTENANCE CONTRACTORS**  
**ENVIRONMENTAL TERMS AND CONDITIONS TO COMMENCE WORK - EMS 048**

The following Environmental Terms and Conditions shall be strictly adhered to by all Contractors when conducting works for the Employer. The Employer shall audit Contractor activities, products and services on an ad hoc basis to ensure compliance to these environmental conditions. Any pollution clean-up costs shall be borne by the Contractor.

ISSUE	REQUIREMENT
<b>Environmental Policy</b>	ACSA's (the Employer's) Environmental Policy shall be communicated, comprehended and implemented by all appointed Contractor staff.
<b>Storm water, Soil and Groundwater Pollution</b>	<ul style="list-style-type: none"> <li>No solid or liquid material may be permitted to contaminate or potentially contaminate storm water, soil or groundwater resources.</li> <li>Any pollution that risks contamination of these resources must be cleaned-up immediately. Spills must be reported to the Employer immediately. Contractors shall supply their own suitable clean-up materials where required.</li> <li>Washing, maintenance and refuelling of equipment shall only be allowed in designated service areas on the Employer property. It is the Contractor's responsibility to determine the location of these areas.</li> <li>No leaking equipment or vehicles shall be permitted on the airport.</li> </ul>
<b>Air Pollution</b>	<ul style="list-style-type: none"> <li>Dust: Dust resulting from work activities that could cause a nuisance to employees or the public shall be kept to a minimum.</li> <li>Odours and emissions: All practical measures shall be taken to reduce unpleasant odours and emissions generated from work related activities.</li> <li>Fires: No open fires shall be permitted on site.</li> </ul>
<b>Noise Pollution</b>	<ul style="list-style-type: none"> <li>All reasonable measures shall be taken to minimize noise generated on site due to work operations.</li> <li>The Contractor shall comply with the applicable regulations regarding noise.</li> </ul>
<b>Waste Management</b>	<ul style="list-style-type: none"> <li>Waste shall be separated as general or hazardous waste.</li> <li>General and hazardous waste shall be disposed of appropriately at a permitted landfill site should recycling or re-use of waste not be feasible.</li> <li>Under no circumstances shall solid or liquid waste be dumped, buried or burnt.</li> <li>Contractors shall maintain a tidy, litter free environment always in their work area.</li> <li>Contractors must keep on file: <ol style="list-style-type: none"> <li>The name of the contracting waste company</li> <li>Waste disposal site used</li> <li>Monthly reports on quantities – separated into general, hazardous and recycled</li> <li>Maintained file of all Waste Manifest Documents and Certificates of</li> </ol> </li> </ul>

	<p>Safe Disposal</p> <p>5. Copy of waste permit for disposal site</p> <p>This information must be available during audits and inspections.</p>
<p><b>Handling &amp; Storage of Hazardous Chemical Substances (HCS)</b></p>	<ul style="list-style-type: none"> <li>• All HCS shall be clearly labelled, stored and handled in accordance to Materials Safety Data Sheets.</li> <li>• Materials Safety Data Sheets shall be stored with all HCS.</li> <li>• All spillages of HCS must be cleaned-up immediately and disposed of as hazardous waste. (HCS spillages must be reported to the Employer immediately).</li> <li>• All Contractors shall be adequately informed with regards to the handling and storage of hazardous substances.</li> <li>• Contractors shall comply with all relevant national, regional and local legislation regarding the transport, storage, use and disposal of hazardous substances.</li> </ul>
<p><b>Water and Energy Consumption</b></p>	<p>the Employer promotes the conservation of water and energy resources. The Contractor shall identify and manage those work activities that may result in water and energy wastage.</p>
<p><b>Training &amp; Awareness</b></p>	<p>The conditions outlined in this permit shall be communicated to all Contractors and their employees prior to commencing works at the airport.</p>

### Low Service Damages

Low service damages shall be imposed by the Employer on Contractors who are found to be infringing these requirements and/or legislation. The Contractor shall be advised in writing of the nature of the infringement and the amount of the low service damages to be imposed. The Contractor shall take the necessary steps (e.g. training/remediation) to prevent a recurrence of the infringement and shall advise the Employer accordingly. The Contractor is also advised that the imposition of low service damages does not replace any legal proceedings the Council, authorities, landowners and/or members of the public may institute against the Contractor.

Low service damages shall be between R 200.00 and R 20,000.00, depending upon the severity of the infringement. The decision on how much low service damages to impose will be made by ACSA's (the Employer) Airport Environmental Management Representative in consultation with the Airport Manager or his/her designate and will be final. In addition to the low service damages, the Contractor shall be required to make good any damage caused due to the infringement at his/her own expense.

I, \_\_\_\_\_ (name & surname) of  
\_\_\_\_\_

\_\_\_\_\_ (company) agree to the above conditions and acknowledge the Employer's right to impose low service damages should I or any of my employees or sub-Contractors fail to comply with these conditions.

Signed: \_\_\_\_\_ on this date: \_\_\_\_\_ (dd/mm/yyyy)

at: \_\_\_\_\_ (airport name).



**ANNEX K**

Maintenance of Elevators Spares List

To be provided to contractor (upon award)



**ANNEX L**

ACSA maintenance procedure for Elevators

- Available upon request from the ACSA service manager





**ANNEX M**

ACSA IMC procedure for call out and work orders

Available upon Request from the ACSA service manager

**ANNEX N**Internal and external factors

Below is a list of internal and external factors which may affect equipment availability and are beyond the Contractor's control:

	Type	Comment
External resources	Utilities •Water •Electricity •Gas •IT Support and other interfaces outside the Contractor battery limit	-No impact to reliability/Maintainability. -It Impact on availability from operations view
External causes	•Outside Operating conditions/parameters •Operator fault/incorrect operation, consider shifting the risk to the Service provider by giving him responsibility to support Operations/Operators •Damage by others( users and Third parties) i.e. Elevator doors •Incorrect use •Foreign material is system	-No impact to reliability/Maintainability. -Impact on availability from operations view This are some of the occurrences that may not be considered the Normal Operating conditions
Other	•Lack of information/Drawings •Lack of access due to no fault of the Contractor after they have requested access timeously •Equipment's under Projects •Other factors that can be proven that was beyond the Contractor's fault	
Spares	Availability of spares (if the spares are not under the control of the Service provider to the limit of the budget)	-Affect Maintainability



	<p>Typically: It is the responsibility of the Client to ensure adequate administration and re-order spares timely, It is the responsibility of the service provider to ensure that the stores administration is done and minimum stock levels are adhered to, the request to buy spare are replenished are done on time intime</p>	<p>No impact on service provider.</p> <p>The Risk is not sitting with a single owner</p>
--	--	--



## ANNEX O

ACSA Mechanical Standardised Minimum: legal requirements and minimum competency requirements



**ANNEX P**

ACSA Inventory procedure

Available upon Request from the ACSA service manager

