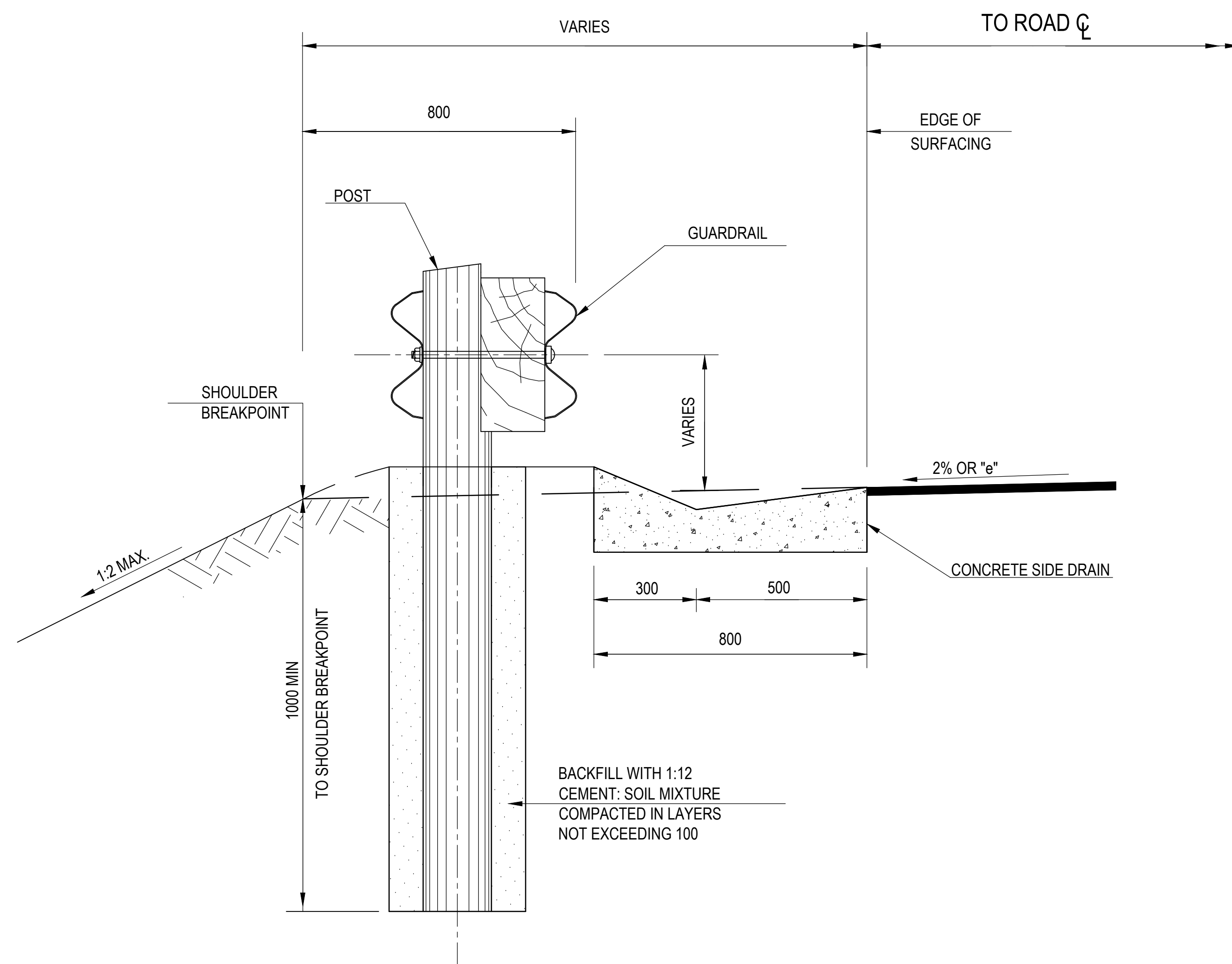
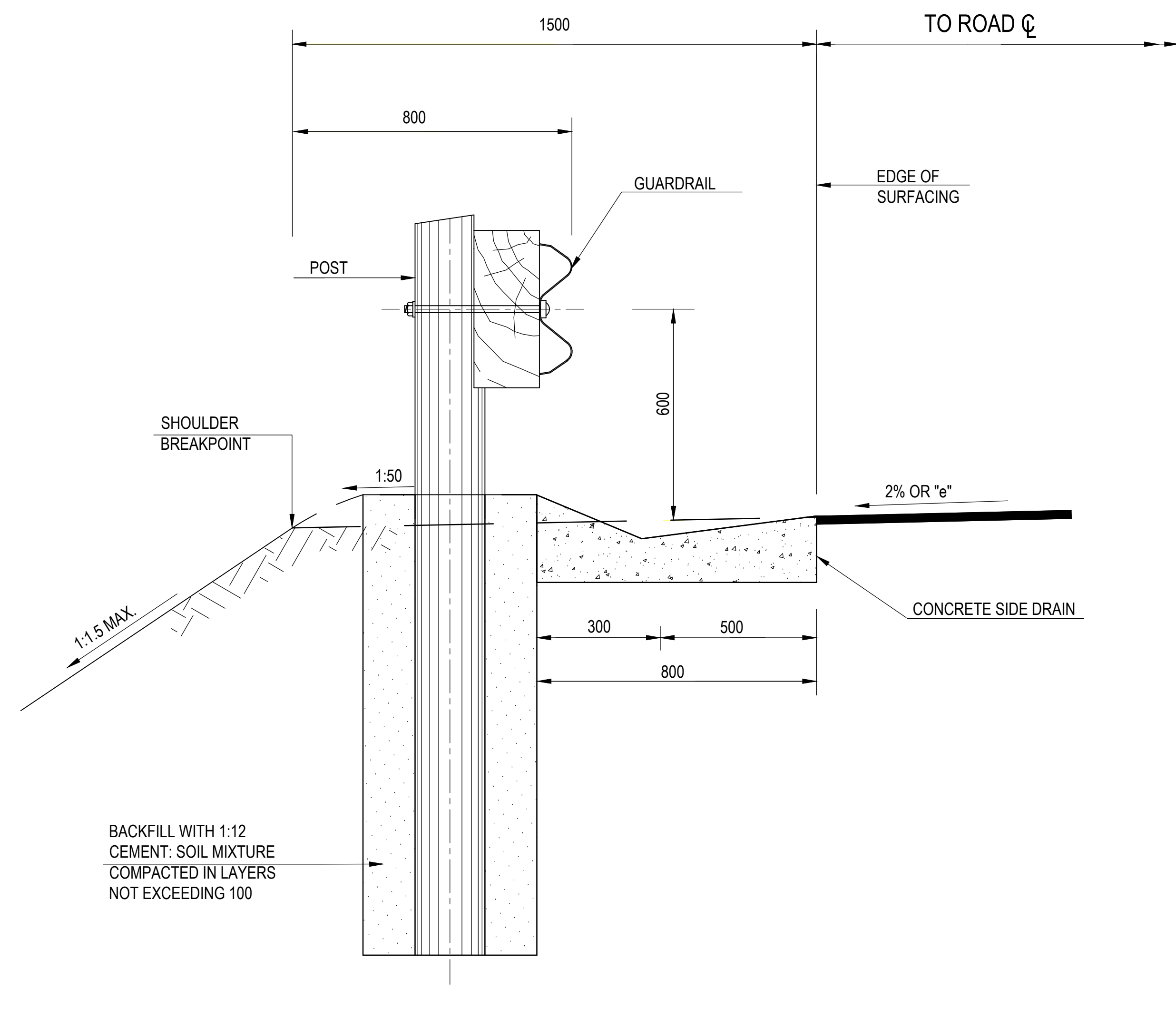


SECTION A - A
Scale 1: 10



SECTION B - B
Scale 1: 10



SECTION B-B WITH CONCRETE SIDE DRAIN
Scale 1: 10

NOTE

1. THE LENGTH OF GUARDRAILS = 4 130
2. NORMAL SPACING OF POSTS = 3 810

NOTES ON ERECTION DETAILS

1. THE HOLES FOR TIMBER POSTS SHALL BE OF SUFFICIENT SIZE TO PERMIT PROPER SETTING OF THE POSTS AND TO ALLOW SUFFICIENT ROOM FOR BACKFILLING.
2. AT LEAST 1,0m OF POST SHALL BE EMBEDDED IN THE GROUND
3. HOLES FOR TIMBER POSTS SHALL BE SPACED TO SUIT THE STANDARD LENGTH OF GUARDRAIL SUPPLIED.
4. HOLES SHALL BE BACKFILLED WITH (12:1) SOIL : CEMENT MIXTURE AT OPTIMUM MOISTURE CONTENT IN COMPACTED LAYERS NOT EXCEEDING 100mm.
5. WHERE JOINTED, THE END OF THE GUARDRAIL WHICH OVERLAPS ON THE SIDE OF THE TRAFFIC SHALL POINT IN THE DIRECTION OF THE TRAFFIC MOVEMENT.

GUARDRAIL WARRANT

1. WHERE THE ROAD IS IN FILL > 3,0m.
2. WHERE THERE IS PERMANENT WATER ADJACENT TO THE ROADWAY.
3. ON ALL BRIDGE APPROACHES.
4. AT OBSTRUCTIONS 1,0m AWAY FROM THE SHOULDER BREAKPOINT.
5. AT ANY DANGER POINT WHERE THE OFF-SHOULDER HAZARD IS GREATER THAN THE HAZARD OF THE GUARDRAIL.

THE ABOVE CRITERIA ARE TO BE APPLIED WITH DISCRETION AND THE POSITION OF ALL GUARDRAILS MUST BE CONFIRMED WITH THE ENGINEER PRIOR TO THE ERECTION THEREOF.

				<div>CONSTRUCTION RECORD</div> <div>WORKS CONTRACT ENGINEER</div>						<div>DESIGNED BY</div> <div>NAME</div> <div>F L E ROUX</div> <div>Prof. Reg. No.:</div>		<div>CONSULTANT APPROVAL</div> <div>NAME</div> <div>S NAICKER</div> <div>Prof. Reg. No.:</div> <div>13 DECEMBER 2019</div> <div>Date</div>		<div>HEAD OFFICE</div> <div>48 Tambotie Avenue</div> <div>Val de Grace</div> <div>Pretoria</div> <div>0184</div> <div>PO Box 415</div> <div>Pretoria 0001</div> <div>South Africa</div> <div>Tel: (012) 844 8000</div>		<div>SANRAL</div> <div>SOUTH AFRICAN NATIONAL ROADS AGENCY SOC LTD</div> <div>BUILDING SOUTH AFRICA</div> <div>THROUGH BETTER ROADS</div>		<div>NORTHERN REGION</div> <div>38 Ida Street</div> <div>Menlo Park</div> <div>Pretoria</div> <div>0081</div> <div>Private Bag X17</div> <div>Lynnwood Ridge</div> <div>0040</div> <div>Tel: (012) 426 6200</div>		<div>ACCEPTANCE</div> <div>THIS ACCEPTANCE IS FOR PROCEDURAL AND ADMINISTRATIVE REVIEW PURPOSES ONLY AND DOES NOT ATTRACT LEGAL LIABILITY OR LIABILITY OF ANY KIND FROM WHATEVER CAUSE OR HOWEVER ARISING</div>		<div>PROJECT DESCRIPTION</div> <div>THE REHABILITATION AND STRENGTHENING OF NATIONAL ROAD R504 SECTION 4 FROM LEEUDORINGSTAD (KM 0.0) TO NW/FS BORDER (KM 24.1)</div>		<div>PROJECT NUMBER</div> <div>R.504-040-2018/1F</div>																																																																																																																																																																																																																																																																																																																																																																																																																																																																																																																																																																																																																																																																																																																																																																																																																																																																																																																																									
				<div>Name</div> <div>S NAICKER</div> <div>Prof. Reg. No.:</div> <div>20040015</div> <div>Date</div> <div>13 DECEMBER 2019</div>		<div>SANRAL PROJECT MANAGER</div>		<div>NAME</div> <div>S VAN HUYSSTEEN</div> <div>Prof. Reg. No.:</div> <div>20040015</div> <div>DATE</div> <div>13 DECEMBER 2019</div>		<div>NAME</div> <div>S NAICKER</div> <div>Prof. Reg. No.:</div> <div>20040015</div> <div>DATE</div> <div>13 DECEMBER 2019</div>												<div>DRAWING NAME</div> <div>GUARDRAILS DETAIL OF TERMINAL SECTIONS</div> <div>SHEET 2 OF 2</div>		<div>DRAWING NO</div> <div>20215/SD/13</div>		<div>SCALE</div> <div>1:1</div>																																																																																																																																																																																																																																																																																																																																																																																																																																																																																																																																																																																																																																																																																																																																																																																																																																																																																																																																							
				<div>NAME</div> <div>R OERLEMANS</div> <div>Prof. Reg. No.:</div> <div>20040015</div> <div>DATE</div> <div>13 DECEMBER 2019</div>																																																																																																																																																																																																																																																																																																																																																																																																																																																																																																																																																																																																																																																																																																																																																																																																																																																																																																																																																													