

C4: SITE INFORMATION

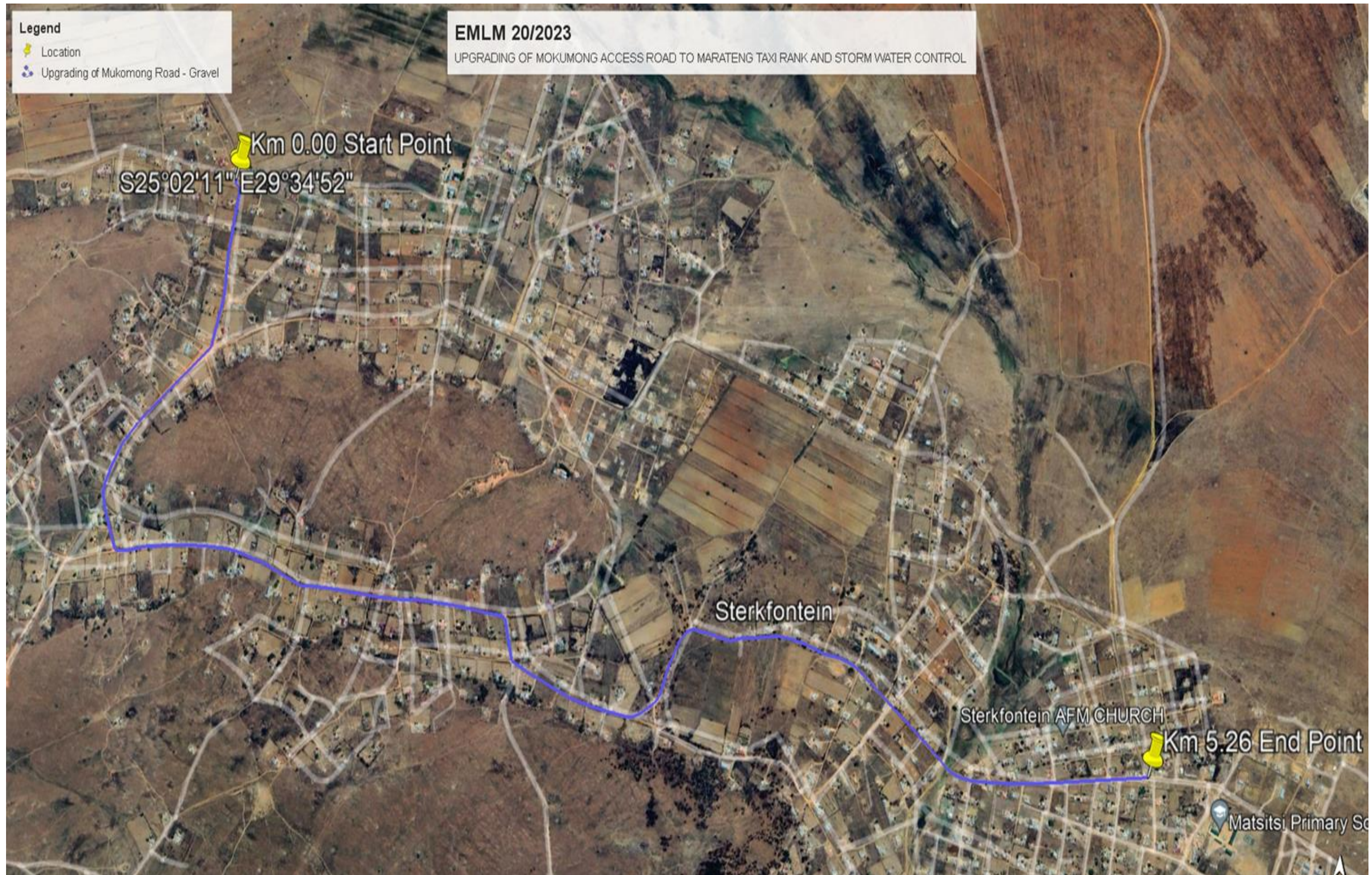
C4.1: SITE INFORMATION

- C4.1.1 Material site investigation
- C4.1.2 Pavement and layer works design

In order to optimize the use of the materials available on site and taking into account the insitu sub-grade material which consists of unsuitable quality material and the expected material available from borrow pits, the following pavement design is proposed:

- Traffic Accommodation
- Box cutting - Earthworks
- Construction of 150 mm thick Roadbed.
- Construction of 150 mm thick selected layers
- Construction of 150 mm thick unstabilised subbase layer
- Construction of 150 mm thick stabilised base layer

C4.2 LOCALITY PLAN



C4.2 TENDER DRAWINGS