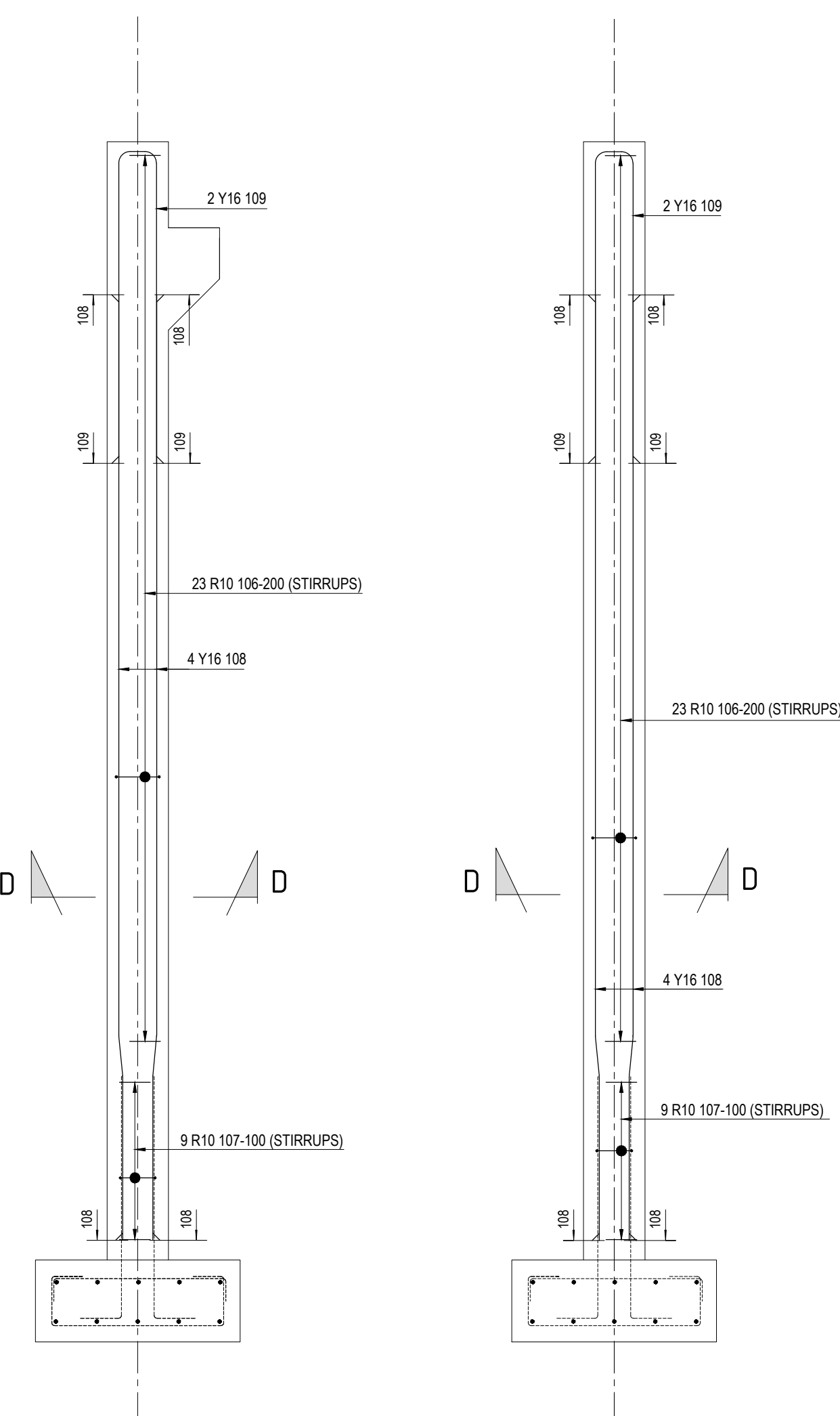


STRIP FOOTING
REINFORCEMENT DETAIL
SCALE 1:50

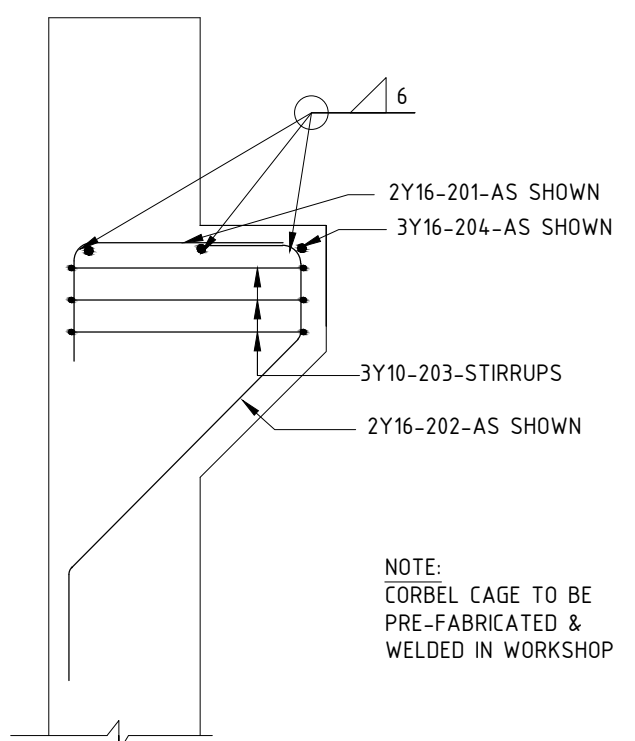
BENDING SCHEDULE

MEMBER	No OF	BARS PER MEMB	DIA.	LENGTH	TOTAL NUM- BER	MARK	S	C	B E N D I N G				
									A	B	C	D	E/r
Strip footings	1	16	Y12	1850	16	001	20	(1860)					
		48	Y12	2150	48	002	20	(2160)					
		72	R10	1640	72	003	160	280	480		60		
		16	Y12	3100	16	004	20	(3090)					
Base Type "A"	9	5	Y16	1900	45	101	55	300	280	880	280	(300)	
		5	Y16	1150	45	102	35	880					
		5	Y16	1800	45	103	55	300	245	880	245	(300)	
		4	Y16	1150	45	104	35	880					
Column Type "A"	6	23	R10	1000	138	106	160	220	220		60		
		9	R10	840	54	107	160	180	180		60		
		4	Y16	4650	24	108	41	800	200	3620		35	
		2	Y16	3200	12	109	38	1530	200	(1530)	60		
Column Type "B"	3	23	R10	1000	69	106	160	220	220		60		
		9	R10	840	27	107	160	180	180		60		
		4	Y16	4650	12	108	41	800	200	3620		35	
		2	Y16	3200	6	109	38	1530	200	(1530)	60		
Corbel	6	2	Y16	650	12	201	37	450	(235)		180	460	
		2	Y16	1200	12	202	42	210	660		470		
		3	Y10	1500	18	203	160	220					
		3	Y16	200	18	204	20	(200)					
	8	10	12	16	20	25	32	40	TOT	Date			
R	Y	242	17	162	904				242	Det. by			
TOT		259	162	904					1325	Ref Dwg			
										Job No			
										Revision			
										Schedule No			

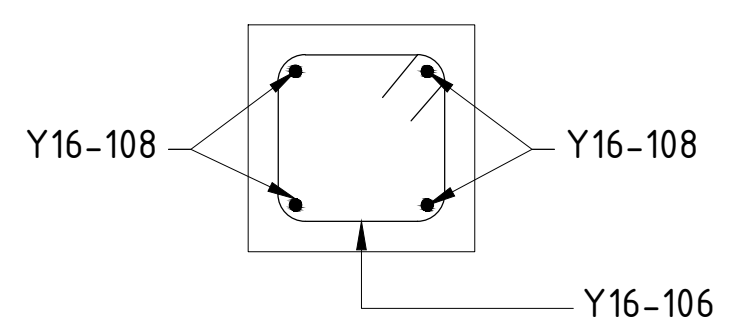


COLUMN TYPE A
REINFORCEMENT (6 NO OFF)
SCALE 1:25

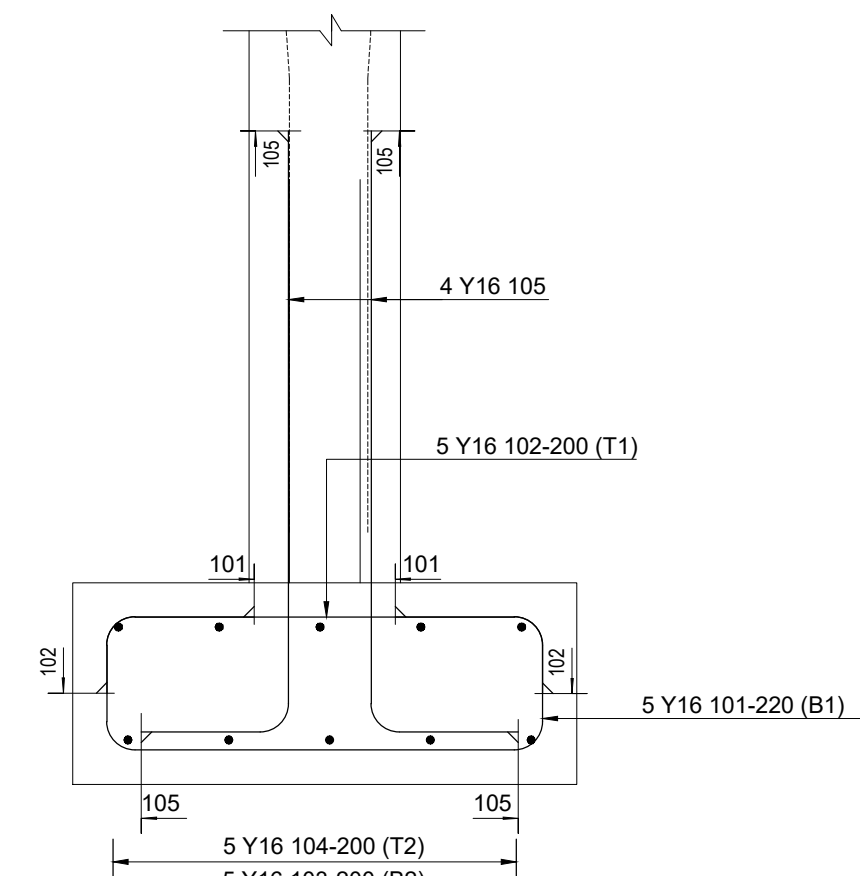
COLUMN TYPE B
REINFORCEMENT (3 NO OFF)
SCALE 1:25



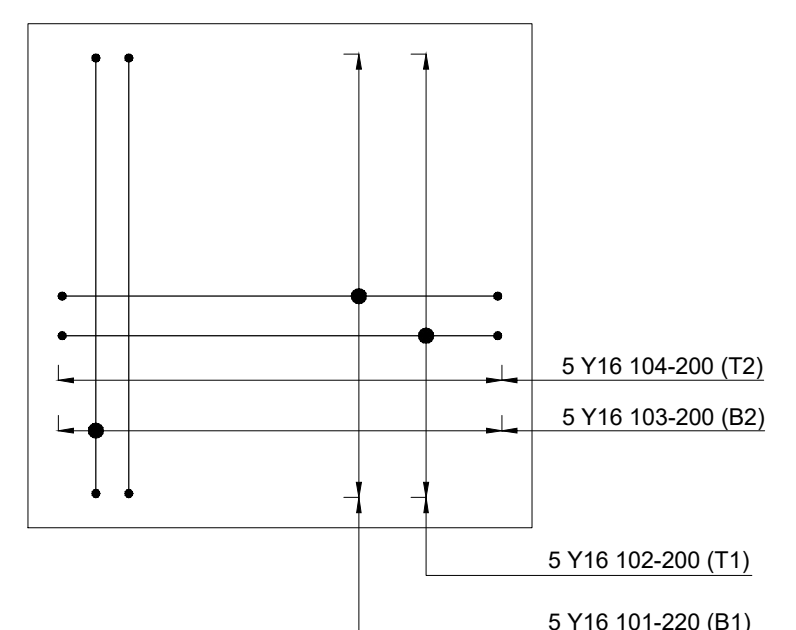
SECTION: CORBEL
REINFORCEMENT (6 NO OFF)
SCALE 1:15



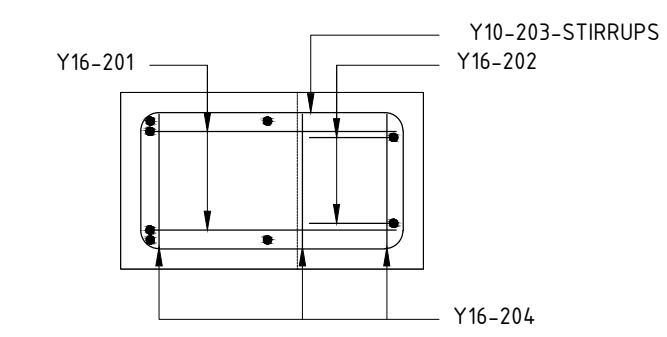
SECTION D-D
SCALE 1:10



SECTION: COLUMN BASE
REINFORCEMENT (9 NO OFF)
SCALE 1:15



PLAN: COLUMN BASE
REINFORCEMENT (9 NO OFF)
SCALE 1:15



PLAN: CORBEL
REINFORCEMENT (6 NO OFF)
SCALE 1:15


AS BUILT

STATION DATUM = 902.25

SEE ESKOM STANDARD FOR
EARTHING REINFORCEMENT

Issued by Nyeleti Consulting
Marelize Mostert
PrEng no: 2001 0150

KKS CODE: 0 0UGC

5	26 05 23	AS BUILT per EEN P45-EEN-ASB-164	MSM	MM	MM								
4	12 06 18	AS BUILT per EEN P45-EEN-ASB-019	WP	MM	MM								
3	15 01 13	KKS CODE ADDED	MRM	MM	WGB								
2	22 10 12	COLUMN & STRIP FOOTING REBAR REVISED	TKM	MM	WGB		0.84/13027-2	TYPICAL DETAILS					
1	06 05 10	BM 202 AND 107	DM	MM	WGB		0.84/13027-1	LAYOUT PLAN					
	28 11 08	FOR REVIEW	DM	MM	WGB								
** REVISION **													
D.O.	REV	DATE	INDEX REFERENCE			REV BY	CHKD BY	AUTH BY	KKS APP	REFERENCE DRAWINGS			
DWG REGISTERED			AUTHORISED FOR ESKOM BY			DATE			<div>MEDUPI POWER STATION</div> <div>WATER TREATMENT PLANT AREA</div> <div>CHLORINATION BUILDING REINFORCEMENT</div>				
DESIGN APPROVED	13 05 10	MM	WG BEETGE			13-05-10							
KKS APP			2 Lynwood Galleries 254 Rosemary Road Lynwood, Tshwane Tel: (012) 961 9600 Fax: (012) 961 9605										
D.O.	13 05 10	MM											
AUTH													
CHKD BY	13 05 10	MM							14 133 - T - 302				
DRAWN BY	13 05 10	DM											
SCALE	AS SHOWN				0.84 / 13027					SHEET	REV		
										4	5		