

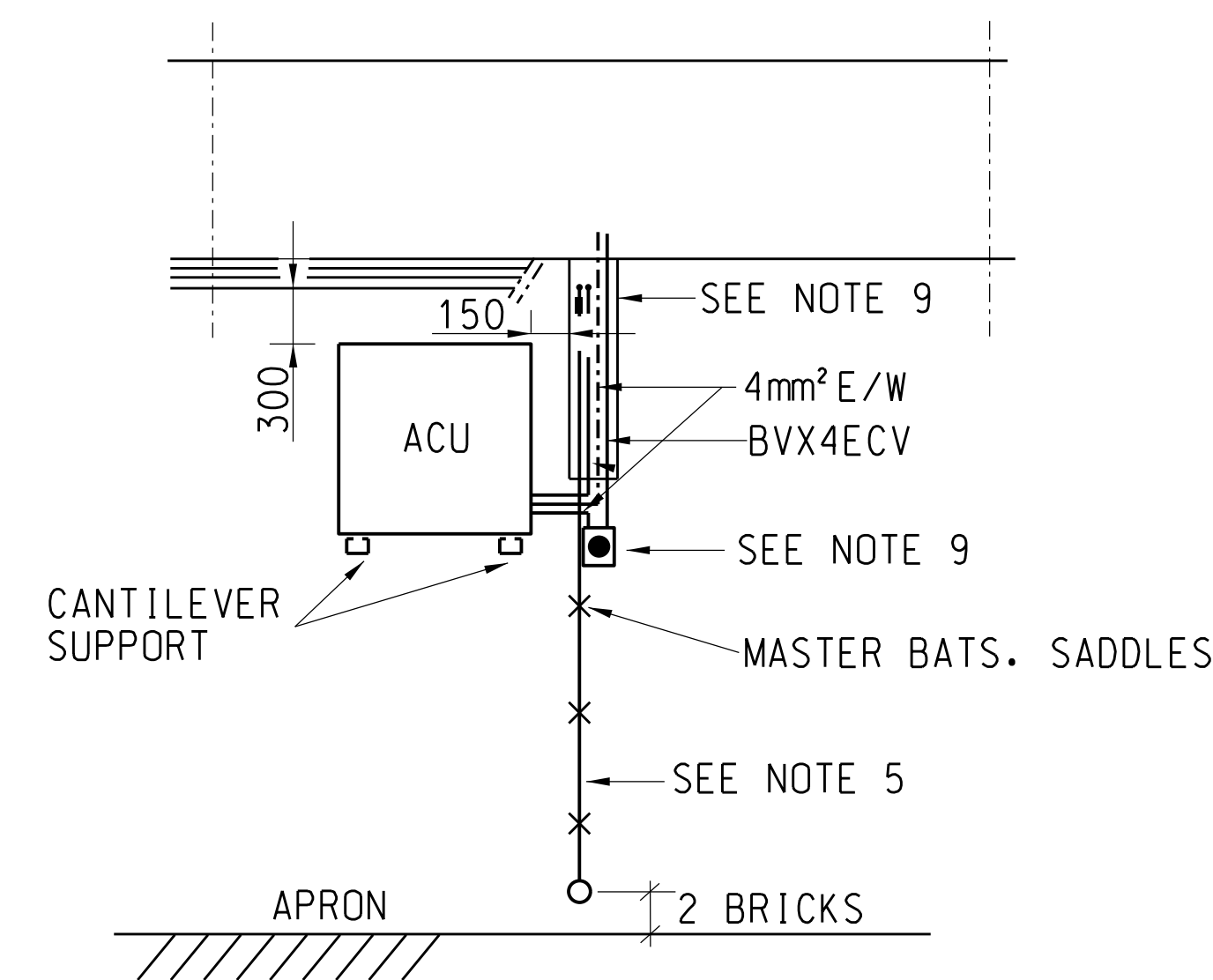
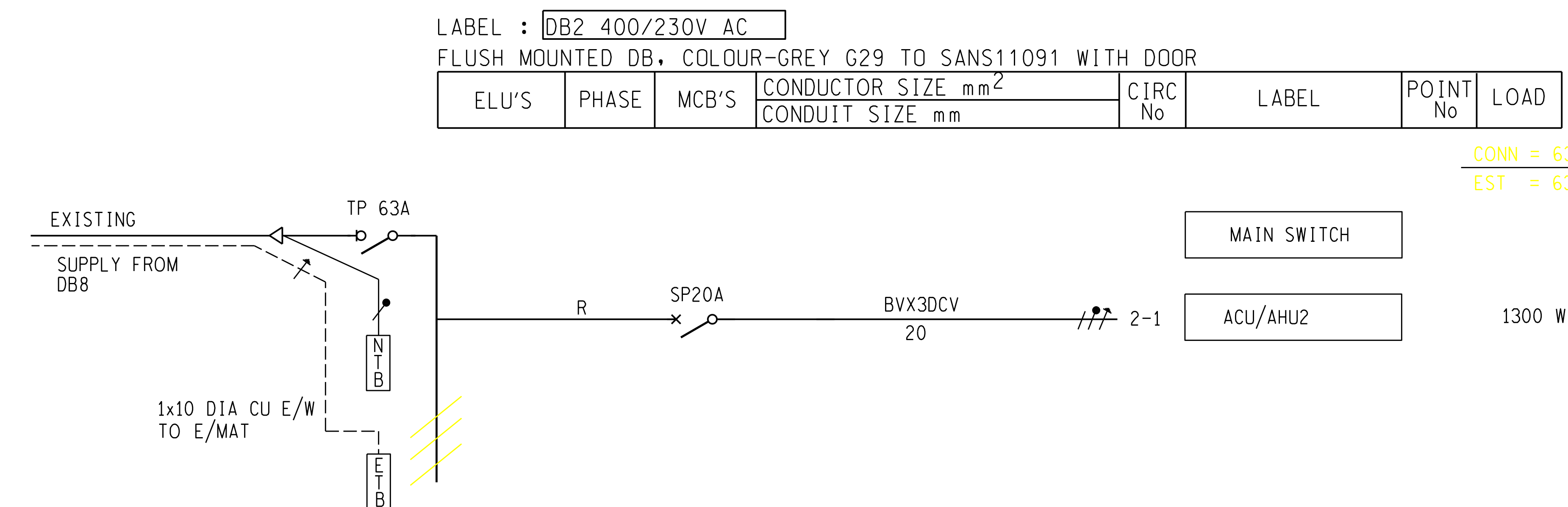
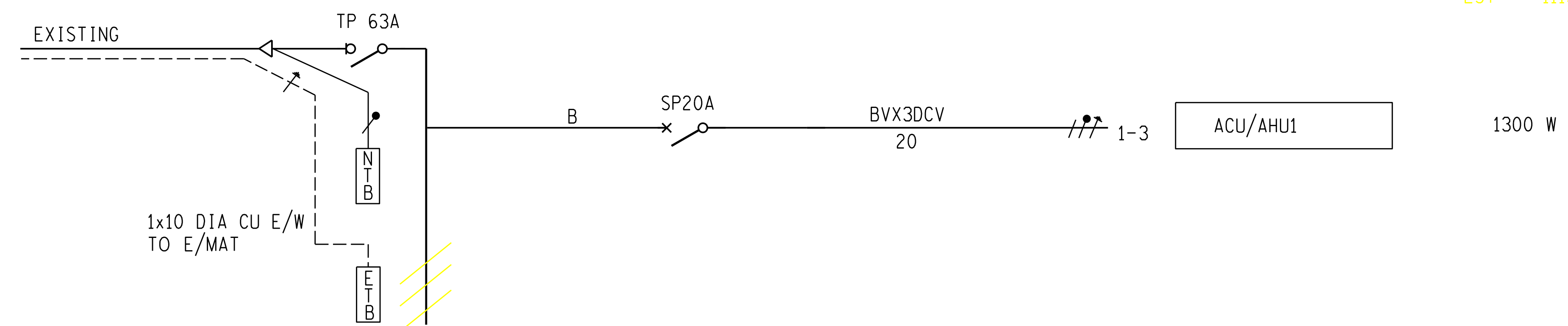
NEW PLAN LAYOUT

AIRCONDITIONING UNITS SCHEDULE:

PLAN REF	DESCRIPTION	COOLING CAPACITY	SUPPLIER	No A/C UNIT
ACU/AHU1 & 2	WALL MOUNTED UNIT WITH HEATPUMP	3.1KW		

NOTES

1. ELECTRICAL INSTALLATION SHALL BE IN ACCORDANCE WITH:
  - 1.1. SANS 10142
  - 1.2. MODEL PREAMBLES FOR TRADES, SECTION 'S' ELECTRICAL WORK
  - 1.3. TECHNICAL SPECIFICATION
2. ALL WIRING SHALL BE CARRIED OUT USING PVC CABLES IN PVC CONDUITS TYPE OF INSTALLATION-FLUSH
3. COLOUR OF LIGHT SWITCHES & SOCKET-OUTLET COVERS-WHITE
4. POWER/CONTROL CABLES IN ROOF SPACE SHALL BE INSTALLED ON CABLE RACKING
5. POWER/CONTROL CABLES AND REFRIGERANT PIPES IN ROOF SPACE IN CONTROL ROOM SHALL BE INSTALLED IN TRUNKING WITH COVERS
6. POWER/CONTROL CABLES AND REFRIGERANT PIPES ON OUTSIDE WALLS SHALL BE INSTALLED IN TRUNKING WITH COVERS
7. TRUNKING SHALL BE FABRICATED FROM 1mm SHEET STEEL MEASURING 127x76,2 WITH CLIP-ON COVER, CORROSION PROTECTION: HOT-DIPPED GALVANISED TO SANS 1763. EXPOSED SURFACES ON OUTSIDE WALL SHALL BE BEIGE EPOXY-POWDER COATING
8. CONTROL CABLES FROM REMOTE CONTROL UNITS TO HANDLING UNIT SHALL BE SURFACE MOUNTED WITHIN WHITE MINI TRUNKING ON WALL
9. LIGHT DUTY CABLE TRAYS SHALL BE INSTALLED IN ROOF VOID WITH OVERALL WIDTH 50mm FOR CABLES & EARTH WIRE RUNNING FROM TRUNKING TO THE UNITS
10. DRAIN PIPE FROM HANDLING UNITS SHALL BE POLYCOP PIPE WITH SUITABLE CONNECTOR, TYPE JG SPEEDFIT OR CONNEX, BETWEEN POLYCOP AND UNIT DRAIN PIPES. PVC TAPE IS NOT ACCEPTABLE. WATER SHALL BE DISCHARGED TO THE APRON SLAB (PIPE SHALL RUN IN TRUNKING, & ON OUTSIDE WALL FIXED ON MASTER BATS SADDLES & DISCHARGED 2 COURSE OF BRICKS ABOVE APRON SLAB & 200mm FROM WALL
11. MOUNTING BRACKETS FOR OUTDOOR UNITS SHALL BE CANTILEVER SUPPORT ARMS TYPE OL-CAO FROM O-LINE OR EQUAL WITH STAINLESS STEEL BOLTS/WASHERS/NUTS
12. ALL AIR CONDITIONING UNITS SHALL BE INSTALLED AS PER MANUFACTURERS INSTALLATION INSTRUCTIONS
13. ALL EXISTING AIR CONDITIONERS SHALL BE REMOVED AND REPLACED WITH UNITS AS SHOWN










TYPICAL FRONT VIEW OF ACU

N.T.S

ELECTRICAL LEGEND:

( IN ACCORDANCE WITH NRS002 )

-  16A DOUBLE SWITCH SOCKET OUTLET
-  CIRCUIT BREAKER
-  SWITCH-DISCONNECTOR
-  CABLE GLAND WITH EARTH TAG
-  EARTHSTUD
-  TERMINALS

1	AIRCON SCHEDULE REVISED		JA	<i>[Signature]</i>	<i>[Signature]</i>	09/06/2025		
REV	REVISION DESCRIPTION		DRAWN	CHKD	AUTH	DATE	REFERENCE DRAWINGS	
APPROVED BY AR NAUDE		 <b>Eskom</b>				Eskom Holdings SOC Ltd Reg No 2002/015527/30		
DATE 25/07/2024								
CHECKED BY SS SEBOSE		<div style="text-align: center;"> <h1 style="color: red;">HERMES</h1> <h2>ACCESS CONTROL BUILDING ELECTRICAL INSTALLATION AND SCHEMATIC DIAGRAM</h2> </div>						
DATE 25/07/2024								
DRAWN BY AR NAUDE		<div style="text-align: center;"> <h1 style="color: red;">HER23P12-SE-E43</h1> </div>						
DATE 25/07/2024								
SCALE		©				SHEET NUMBER		REVISION
						0		1

**FINAL DESIGN  
FOR CONSTRUCTION**