



PORT OF DURBAN PDFP

Date : 2024

PDFPS UPDATE – **PORT OF DURBAN**

PDFPs UPDATE

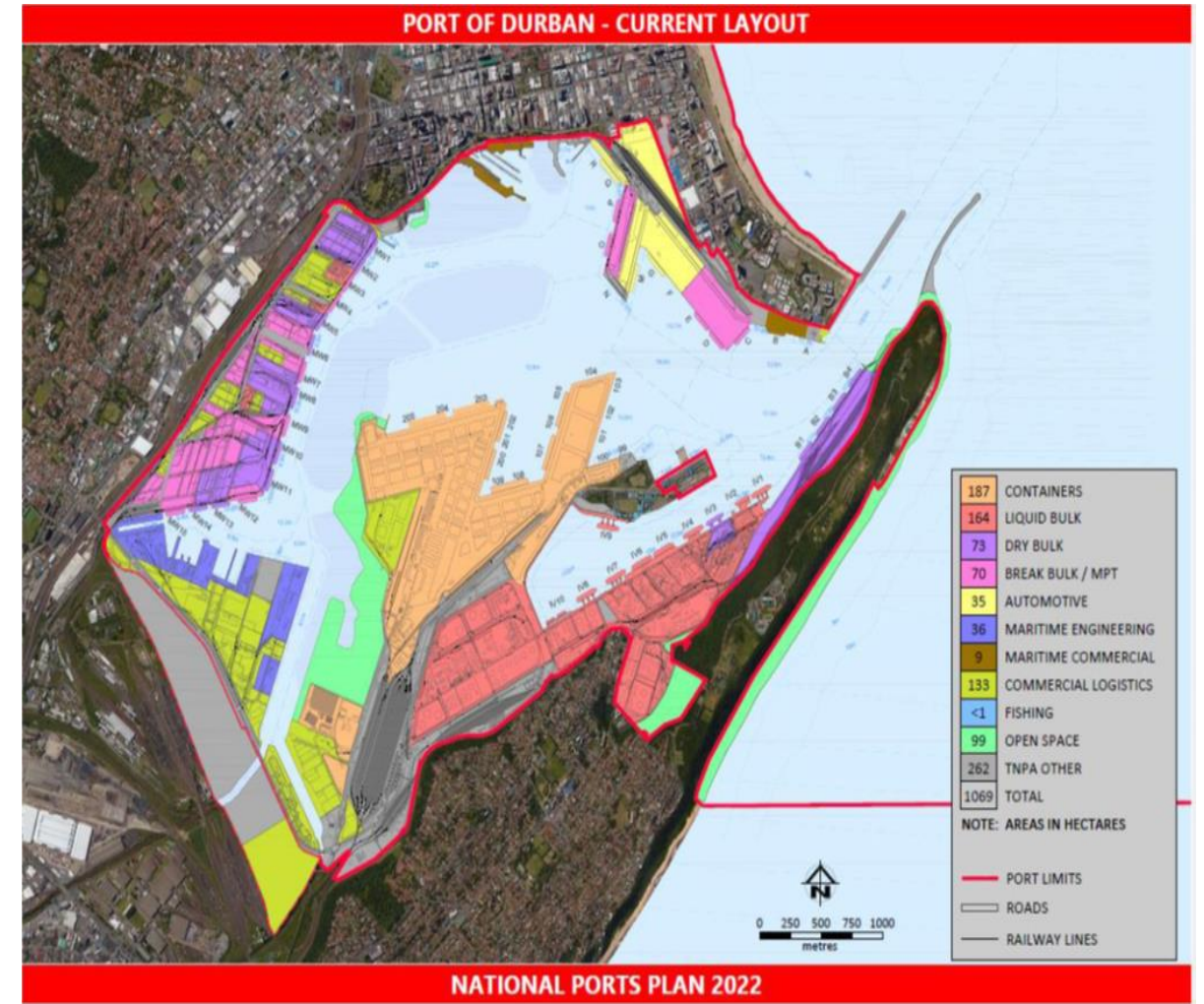
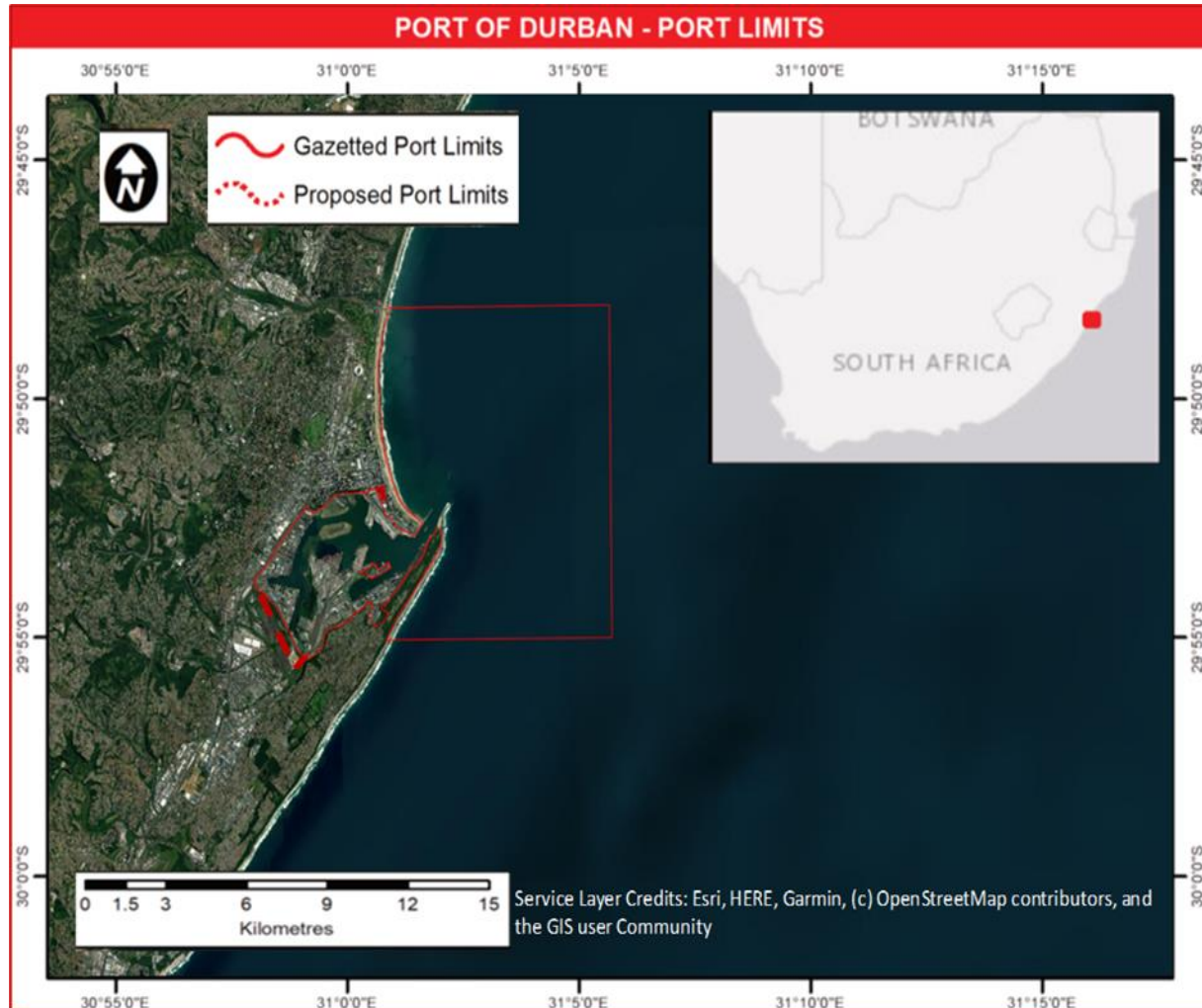
Port of Durban



Category	Type of operation	Description
Freight traffic	Containers	Imports, exports and transhipments of containers.
	Break bulk	Import of rice and steel products and export of citrus fruit, granite and paper products.
	Dry bulk	Import of wheat and agricultural products and export of maize, manganese ore and wood chips.
	Liquid bulk	Crude oil imported via the Durban SBM, while refined liquid bulk products, chemicals and edible oils imported via Island View.
	Automotive	Import and export of automotive vehicles.
Maritime services	Fishing	Fishing trawlers are accommodated at the fishing jetty north of Maydon Wharf.
	Maritime engineering	Ship repair facilities include a graving dock and three floating docks.
	Harbour services	Related to port operations and cargo handling.
	Maritime commercial	Cruise liners are accommodated at A Berth. There are three marinas and they accommodate yacht clubs and restaurants.
	Bunker services	The port offers bunkering services.

PDFPs UPDATE – PORT OF DURBAN

Current Port Layout



PDFPS UPDATE – PORT OF DURBAN

Short Term Layout

PORT OF DURBAN - SHORT TERM LAYOUT - 2032



NATIONAL PORTS PLAN 2022

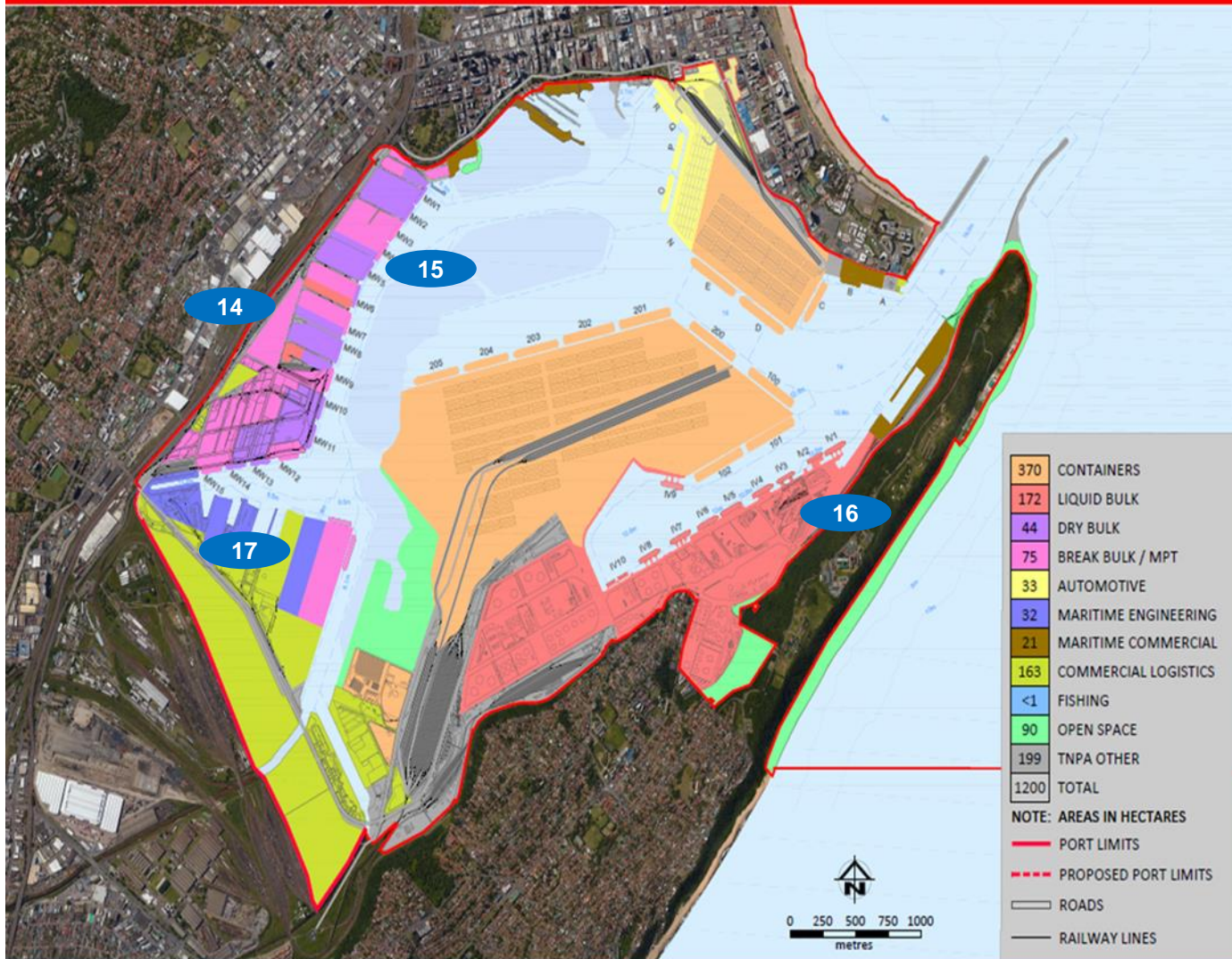
From the current to short-term layout, the following changes are predicted:

- A. New Cruise Terminal
 - B. TPT – DCT Pier 2 PSP
 - C. Durban Marina Waterfront Development
 - D. Second Access Road
 - E. Container Storage for Pier 2
1. Amendment of Port Limits to include Ex Cars for Africa and Ambrose sites
 2. Automotive Terminal Expansion
 3. Bayhead & Langeberg Roads Upgrade
 4. New Point Container Terminal
 5. Maydon Wharf Channel Deepening
 6. Entrance Channel Widening & Deepening
 7. Pier 2 Berths 203 -205 Deepening
 8. New Multi Purpose Terminal
 9. SA Navy Satellite Station
 10. Pier Phase 1 Container Terminal and Rail Expansion
 11. New Dry Dock
 12. Infill DCT Basin
 13. Reconstruction of Island View Berth 1

PDFPS UPDATE – PORT OF DURBAN

Short Term Layout: 2032 cont.

PORT OF DURBAN - SHORT TERM LAYOUT - 2032



NATIONAL PORTS PLAN 2022

14. Reconfiguration of Maydon Wharf Precinct
15. Deepening of Maydon Wharf Berth 5 -11 & 15
16. IV Berth 3 converted from Dry bulk to Liquid Bulk
17. New Propose Ship Lift

PDFPS UPDATE – PORT OF DURBAN

Medium Term Layout: 2032 - 2052

PORT OF DURBAN - MEDIUM TERM LAYOUT - 2052



443	CONTAINERS
128	LIQUID BULK
27	DRY BULK
43	BREAK BULK / MPT
33	AUTOMOTIVE
32	MARITIME ENGINEERING
20	MARITIME COMMERCIAL
160	COMMERCIAL LOGISTICS
<1	FISHING
90	OPEN SPACE
186	TNPA OTHER
1163	TOTAL
NOTE: AREAS IN HECTARES	
—	PORT LIMITS
- - -	PROPOSED PORT LIMITS
—	ROADS
—	RAILWAY LINES

Changes predicted the medium-term layout for the port of Durban are as follows:

1. Pier 1 Phase 2 Container Terminal and Island View turning Basin
2. Maydon Wharf New Container Terminal and rail expansion

PDFPS UPDATE – PORT OF DURBAN

Long Term Layout: 2052 and Beyond

PORT OF DURBAN - LONG TERM LAYOUT - BEYOND 2052



NATIONAL PORTS PLAN 2022

No change is envisioned for the long-term layout at the Port of Durban.



Thank you

