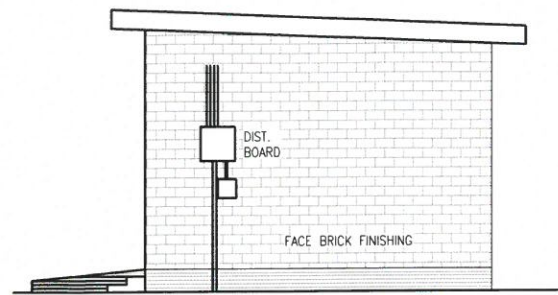


BRICKWORK NOTES!

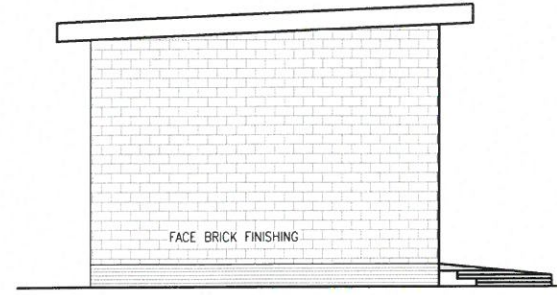
- (i). ALL BRICKWORK IN WALLS, TRENCHES AND FOUNDATIONS TO BE FACEBRICK INSIDE AND OUT
- (ii). MORTAR TO BE CLASS II
- (iii). BRICKFORCE TO BE BUILT INTO EVERY FOURTH COURSE
- (iv). PRECAST LINTELS TO BE INSTALLED OVER ALL OPENINGS

BRICKWORK SPECIFICATION:

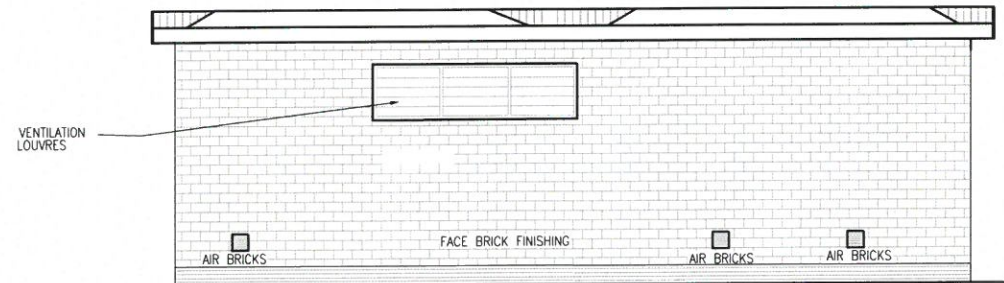
- (1). BRICKWALL TO MATCH THE ADJACENT BUILDING



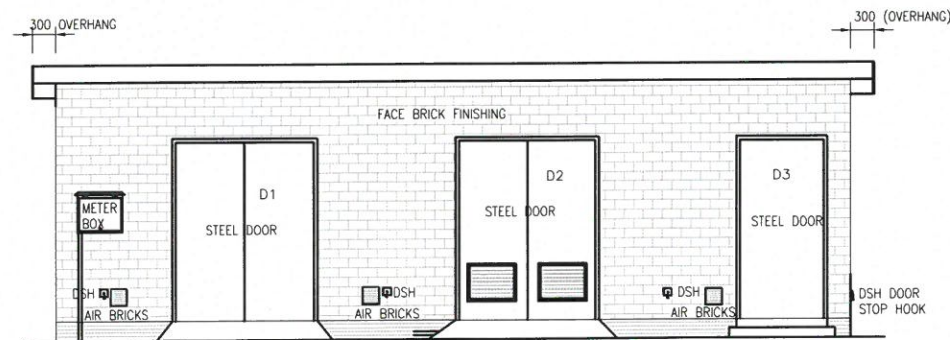
SIDE VIEW
SCALE 1:50



SIDE VIEW
SCALE 1:50



BACK VIEW
SCALE 1:50



FRONT VIEW
SCALE 1:50

DOOR SCHEDULE & WINDOW SCHEDULE:

MARK	QTY.	SIZE	DESCRIPTION	
D1	1	1830 WIDE x 2438 HIGH	TYPE: DV DOUBLE STEEL WITHOUT LOUVRES ONLY FOR SWITCHING ROOM: PRESSED STEEL FOR 330MM WALL PLASTER ONLY ON ONE SIDE DOOR: PRESSED STEEL DOORS WITH LOUVRES (SEE NOTE) LOCK: SPRING LOAD HAND LOCK GRIP AND PULL CAMP PLUS PADLOCK EYES PLUS LOCK PROTECTOR SQUARE OR RING AS PER NRS 059 - 2000 NOTE: DOORS TYPICAL TO: (CRITTALHOPE WESPICO (FS LTD)) BARREL BOLTS: 152mm BOLTS UPPER AND UNDER ON INNER SIDE OF FIRST LOCK. WING OF TYPE M DOUBLE DOORS TYPE D AND Y 152mm STEEL BOLTS ON BOTTOM SIDE AND SPRING CHAN BOLTS ON TOP SIDE DOOR HOOKS AND EYES: EYES MUST BE FIXED TO EACH DOOR WING. DOOR HOOKS MUST BE BUILT INTO WALL TO PREVENT SELF CLOSING OF DOOR	
D2	1	1830 WIDE x 2438 HIGH	TYPE: DV DOUBLE STEEL WITH LOUVRES ONLY FOR TRANSFORMER ROOM: PRESSED STEEL FOR 330MM WALL PLASTER ONLY ON ONE SIDE DOOR: PRESSED STEEL DOORS WITH LOUVRES (SEE NOTE) LOCK: SPRING LOAD HAND LOCK GRIP AND PULL CAMP PLUS PADLOCK EYES PLUS LOCK PROTECTOR SQUARE OR RING AS PER NRS 059 - 2000 NOTE: DOORS TYPICAL TO: (CRITTALHOPE WESPICO (FS LTD)) BARREL BOLTS: 152mm BOLTS UPPER AND UNDER ON INNER SIDE OF FIRST LOCK. WING OF TYPE M DOUBLE DOORS TYPE D AND Y 152mm STEEL BOLTS ON BOTTOM SIDE AND SPRING CHAN BOLTS ON TOP SIDE DOOR HOOKS AND EYES: EYES MUST BE FIXED TO EACH DOOR WING. DOOR HOOKS MUST BE BUILT INTO WALL TO PREVENT SELF CLOSING OF DOOR	
D3	1	1200 WIDE x 2134 HIGH	TYPE: HW WITHOUT LOUVRES FRAME: PRESSED STEEL FOR 330MM WALL PLASTER ONLY ON ONE SIDE DOOR: PRESSED STEEL DOORS WITH LOUVRES (SEE NOTE) LOCK: SPRING LOAD HAND LOCK GRIP AND PULL CAMP PLUS PADLOCK EYES PLUS LOCK PROTECTOR SQUARE OR RING AS PER NRS 059 - 2000 NOTE: DOORS TYPICAL TO: (CRITTALHOPE WESPICO (FS LTD)) BARREL BOLTS: 152mm BOLTS UPPER AND UNDER ON INNER SIDE OF FIRST LOCK. WING OF TYPE M DOUBLE DOORS TYPE D AND Y 152mm STEEL BOLTS ON BOTTOM SIDE AND SPRING CHAN BOLTS ON TOP SIDE DOOR HOOKS AND EYES: EYES MUST BE FIXED TO EACH DOOR WING. DOOR HOOKS MUST BE BUILT INTO WALL TO PREVENT SELF CLOSING OF DOOR	
LOUVRES	1	3 x (745 x 903) LOUVRES WELDED TOGETHER	INSTALL 3 x STANDARD STEEL LOUVRES AS PER "WESPICO TRANSFORMER LOUVRE" UNITS (745 x 903) OR ALTERNATIVE WITH A MINIMUM OF 1,45m² VENTILATION OPEN AREA. LOUVRES TO BE WELDED TO EACH OTHER AND RAWL BOLTED (M12) INTO WALL AFTER FIT IN POSITION. IP RATING OF 23	

GENERAL NOTES:

- THIS DRAWING TO BE READ IN CONJUNCTION WITH ALL RELEVANT ARCHITECTS' DRAWINGS AND ENGINEER'S DRAWINGS.
- DIMENSIONS MUST NOT BE SCALED OR ASSUMED. AFTER NOTIFICATION, DISCREPANCIES OR MISSING DIMENSIONS WILL BE CORRECTED IN WRITING BY THE ENGINEER.
- UNLESS OTHERWISE NOTED, FINISH TO CONCRETE TO BE AS FOLLOWS:
GROUND FLOOR: STEEL TROWEL
CONCRETE STRENGTH:
GROUND FLOOR : 30Mpa
GROUND BEAMS : 30Mpa
COLUMNS : 30Mpa
- COVER TO REINFORCEMENT: AS SHOWN ON BENDING SCHEDULES.
- 50mm BLINDING TO BE 10Mpa CAST BELOW FOUNDATIONS
- CURING TO BE CARRIED OUT USING APPROVED SANS CURING COMPOUND OR POLYTHENE SHEETING. IN EXTREME HEAT CONDITIONS, I.E. >35°C, SHADING MUST BE PROVIDED BY THE CONTRACTOR.
- SEALANT SHALL BE JACOFLEX 972 FLOW GRADE (OR SIMILAR APPROVED) POLYSULPHIDE SEALANT WITH AN APPROVED EPOXY PRIMER.
- CEMENT TO BE OPC OR PC 15.
- PROVIDE BUTTERFLY TIES 150-200mm LENGTH, 75-100 WIDE WITH MOISTURE DRIP SPACED AT 600mm CENTRES
- ALL CONCRETE TO HAVE A MINIMUM CEMENT CONTENT OF 420 kg/m³ AND MINIMUM CEMENT/WATER RATIO OF 2.2
- ENGINEER TO INSPECT THE SLAB PRIOR TO CASTING OF CONCRETE.

Rev. No.	Description	Rev.	Description	Rev.	Description	Rev.	Description	Rev.	Description
E404-S-702	BRICK WORK, APRON LAYOUT & DETAILS	0	ISSUED FOR CONSTRUCTION	ALM	S.K.	S.D.	MAY 2016		
E404-S-701	FOUNDATION LAYOUT & DETAILS	0	ISSUED FOR CONSTRUCTION	BY	CH/A	Eng	Date		
Reference Drawings									

FREE STATE PROVINCIAL
GOVERNMENTDEPARTMENT OF HUMAN
SETTLEMENT

Physical Address
LEOHWAG BUILDING
ST ANDREW STREET
BLOEMFONTEIN
9301

Postal Address
PO BOX 221
BLOEMFONTEIN
9300

LTE CONSULTING

Physical Address	Postal Address
LTE House Building 1 Office Park (Belvedere Place) 5 Eglen Road, Sunning 148 2157 Tel: +27 (0) 11 061 5700 Fax: +27 (0) 11 061 5755	PO Box 050050 Rondelet, 1665 South Africa
PROJECT NAME: DARK & SILVER CITY HOUSING DEVELOPMENT (BOTTOM SITE)	Project Number: E404
Drawing Title: SUBSTATION BUILDING ELEVATIONS, DOOR AND WINDOW SCHEDULE	

APPROVED ENGINEER CHECKED DRAWN AS SHOWN	K. MUDZAMIRI S. DUBE B. NOLUWU C.W. KASIRORI	MAY/2016 MAY/2016 MAY/2016 MAY/2016
ALL RIGHTS ON THIS DRAWING REST AT ANY TIME WITH LTE CONSULTING, WITHOUT WHOSE WRITTEN CONSENT IT MAY NOT BE COPIED, REPRODUCED, COMMUNICATED OR RENDERED ACCESSIBLE TO THIRD PARTIES.		
LTE Drawing No.		
E404-S-703		
Rev		
0		