

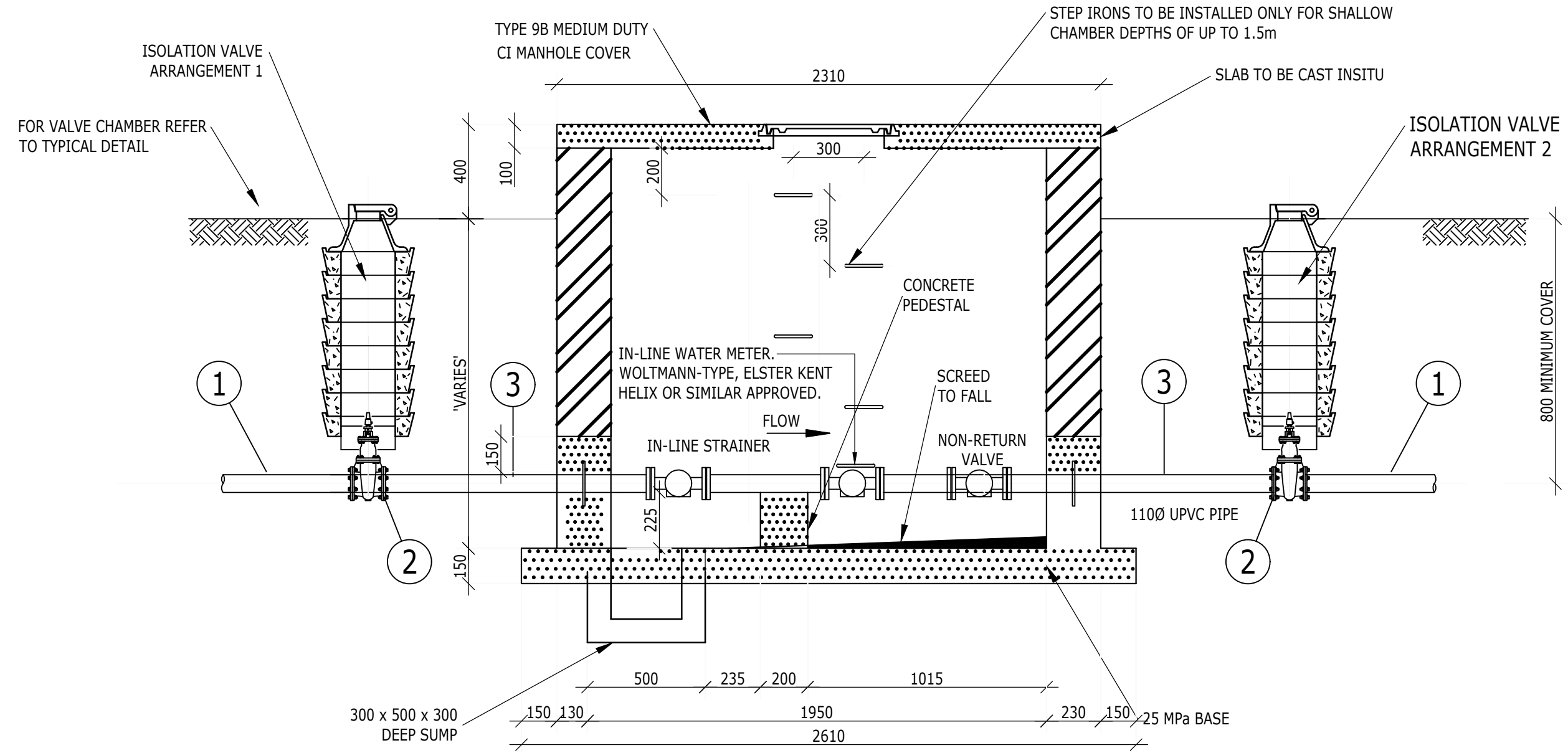
FLEXIBLE PIPE BEDDING DETAIL
SCALE 1:10

PIPE SCHEDULE FOR 50/100/150Ø ARRANGEMENT
(ALL SPECIALS TO BE SUITABLE FOR 16 BAR WORKING PRESSURE.)

ITEM	NO.	DETAILS	DESCRIPTION
1	2		1100 uPVC PIPE 500mm LONG, BOTH ENDS FLANGED.
2	2	STANDARD ITEM	1000 FLANGED GATE VALVE OR 1000 BRASS VALVE TO SUIT 1100 FLANGED UPVC PIPE.
3	2		1100 UPVC PIPE 1750mm LONG, BOTH ENDS FLANGED WITH PUDDLE FLANGE.

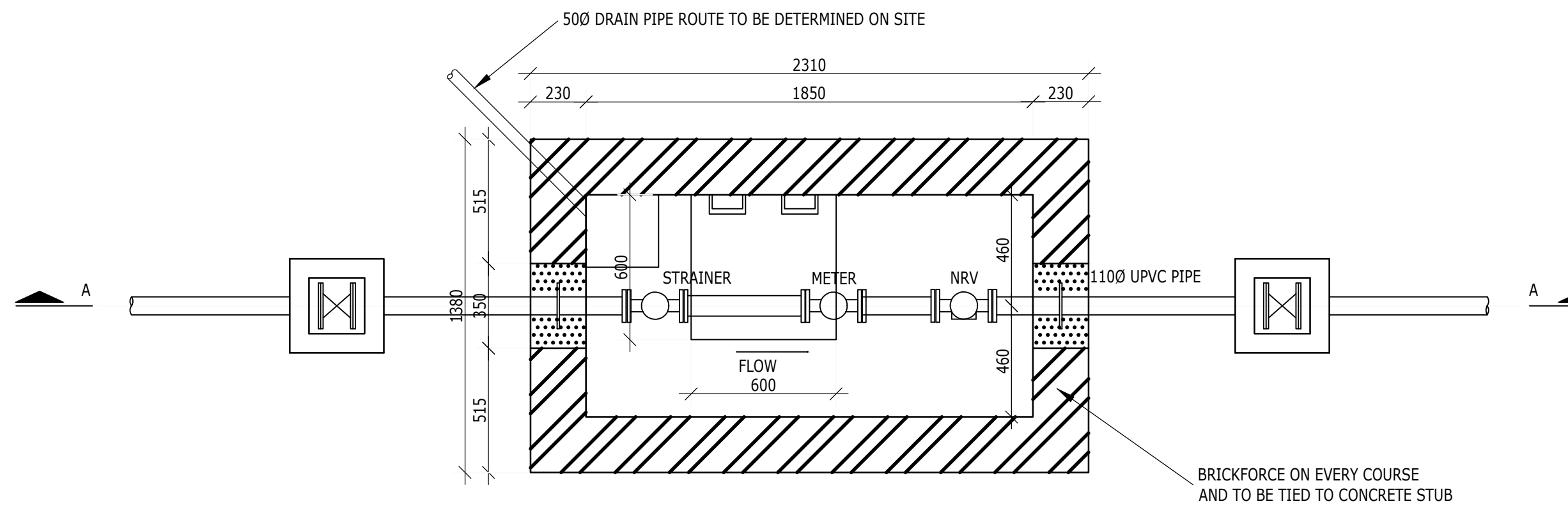
LEGEND

PF - PUDDLE FLANGE
FL - FLANGE
PE - PLAIN ENDED



SECTION A-A

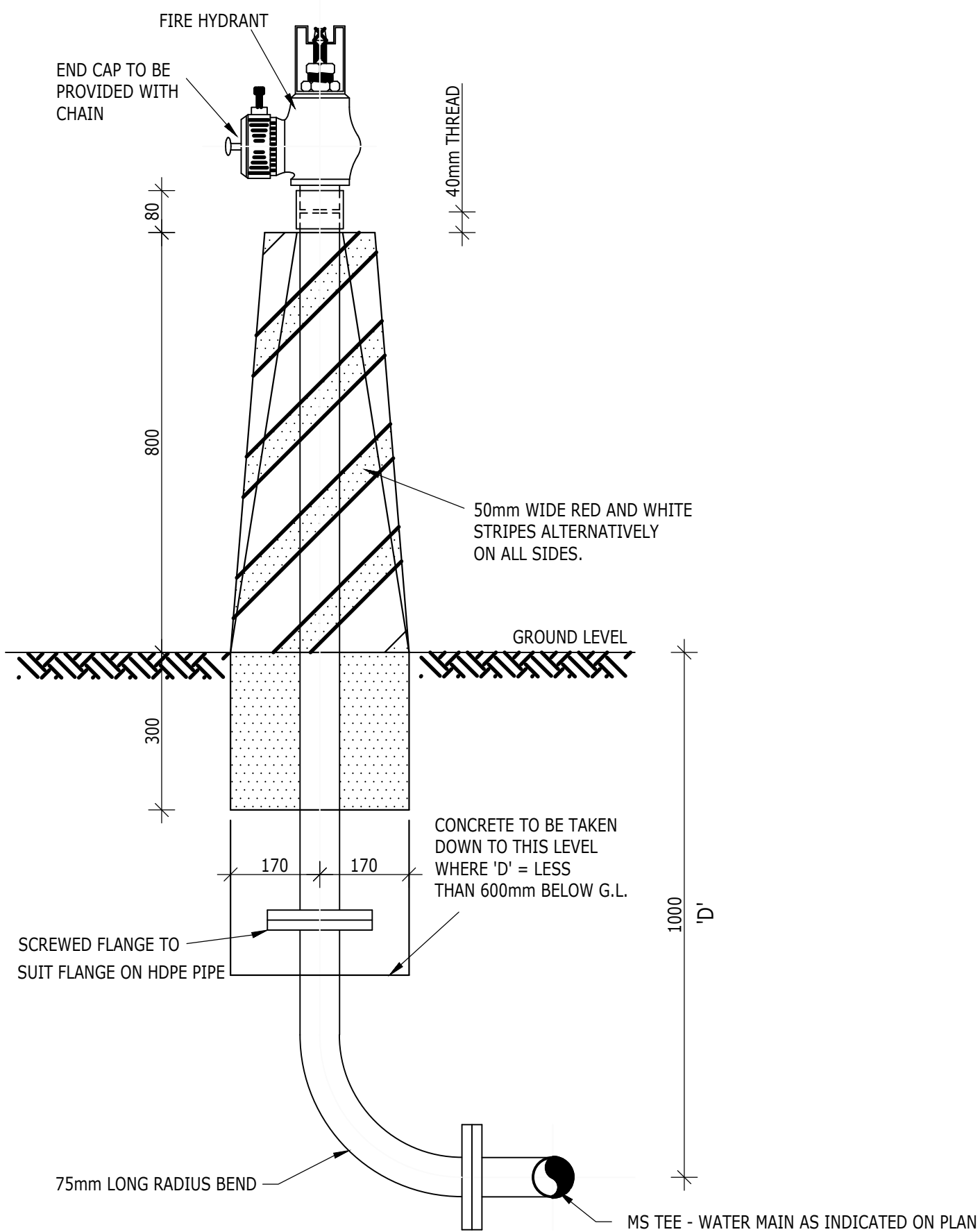
SCALE 1:20



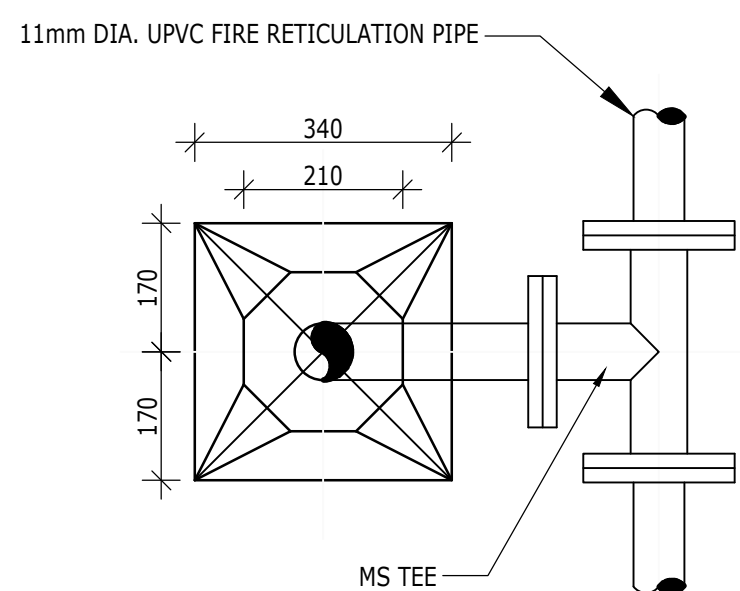
PLAN ON METER CHAMBER

SCALE 1:20

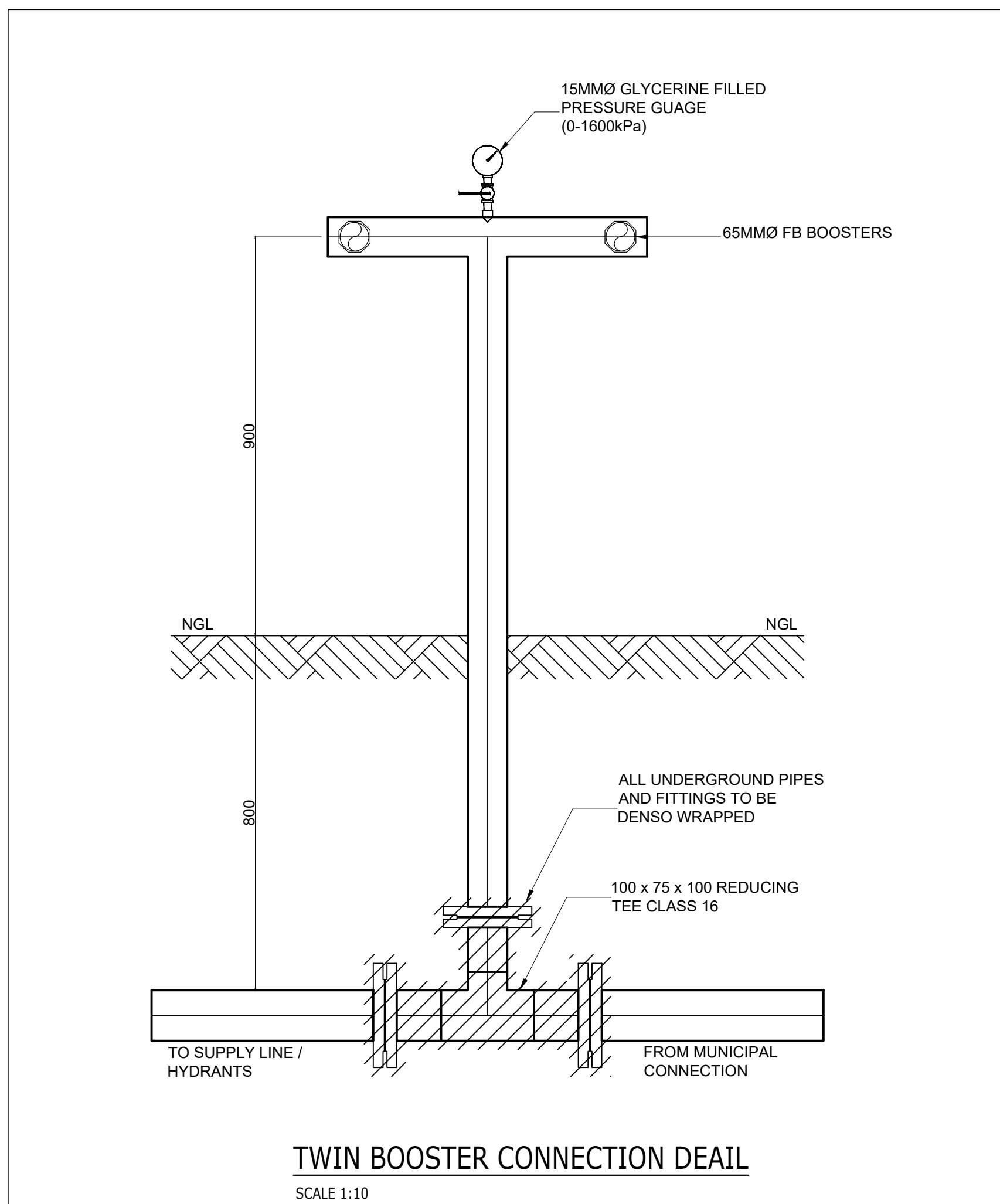
NOTE:
TWO HYDRANT KEYS AND SNAP-ON FIRE HOSES TO BE KEPT AT HOSTEL SECURITY OFFICES. THE FIRE DEPARTMENT OF THE MUNICIPALITY TO BE PROVIDED WITH FOUR HYDRANT KEYS.



ELEVATION ON HYDRANT DETAIL
SCALE 1:10

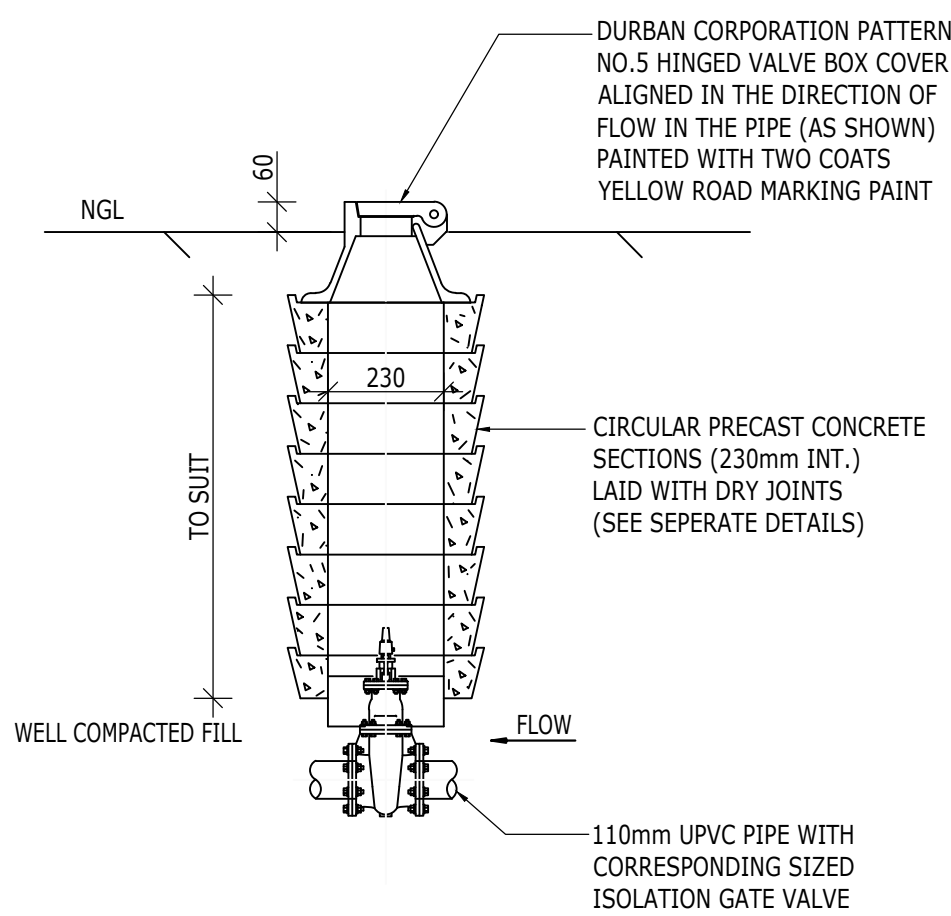


PLAN ON HYDRANT
SCALE 1:10



TWIN BOOSTER CONNECTION DEAIL

SCALE 1:10



TYPICAL DETAIL OF VALVE CHAMBER

SCALE 1:15

REVISIONS			
No.	Description	Date	By
T01	ISSUED FOR TENDER	20/08/2024	TM

NOTES

- ALL CIVIL DRAWINGS TO BE READ IN CONJUNCTION WITH THE RELEVANT ARCHITECTURAL, STRUCTURAL, MECHANICAL, ELECTRICAL AND FIRE ENGINEERING DRAWINGS.
- ANY DISCREPANCIES AND AMBIGUITIES ON THE ENGINEERS DRAWINGS TO BE REPORTED TO INHIV IMMEDIATELY BY MEANS OF AN RFI (REQUEST FOR INFORMATION).
- LEVELS AND DIMENSIONS TO BE CHECKED BEFORE ANY WORK COMMENCES. DIMENSIONS ARE NOT TO BE SCALED.
- ALL CIVIL DRAWINGS TO BE READ IN CONJUNCTION WITH THE PRESCRIBED CODE OF PRACTICES OR DESIGN SPECIFICATIONS, AND THE BILL OF QUANTITIES.
- IN CASE OF A CONFLICT BETWEEN SPECIFICATIONS OCCURRING ON THE DRAWINGS AND THE BILL OF QUANTITIES, THE DRAWING SPECIFICATION SHALL TAKE PREFERENCE OVER THE SPECIFICATION IN THE BILL OF QUANTITIES.
- ALL WORK SHALL BE CONSTRUCTED IN ACCORDANCE WITH THE LATEST REVISION OF SABS 1200 AND THE PROJECT SPECIFICATION IN THE CONTRACT DOCUMENTATION.
- ALL INSTRUCTIONS FROM THE ENGINEER SHALL BE WRITTEN IN THE SITE INSTRUCTION BOOK, WHICH SHALL BE PROVIDED BY THE CONTRACTOR.
- PRODUCTS DIFFERENT TO THOSE SPECIFIED MAY ONLY BE USED IF APPROVED BY THE ENGINEER.
- THE MAIN CONTRACTOR SHALL PROVIDE ALL SUB-CONTRACTORS WITH RELEVANT DRAWINGS AND INFORMATION.
- THE CONTRACTOR IS RESPONSIBLE FOR IDENTIFYING AND PROTECTING ALL EXISTING SERVICES ON SITE.
- THE CONTRACTOR IS RESPONSIBLE FOR PROTECTING THE WORKS FROM DAMAGE CAUSED BY SURFACE WATER OR SUBSURFACE WATER BY USING BERMS, CHANNELS, PUMPS ETC.

HEALTH DEPARTMENT SIGNATURES

DEPUTY DIRECTOR GENERAL

HEAD OFFICE PROGRAMME / SERVICE

DISTRICT MANAGER

CEO / MANAGER OF THE FACILITY

DOH PROJECT MANAGER

IMPLEMENTING AGENT PROJECT MANAGER

PROFESSIONAL SERVICE PROVIDER

NAME

SIGNATURE DATE

PROFESSIONAL:



SOUTHERN REGION

Project
WIMS NO. 044044: SOUTHERN REGION: PORT SHEPSTONE: DEPARTMENT OF HEALTH: PORT SHEPSTONE: PORT SHEPSTONE HOSPITAL: NEW PSYCHIATRIC WARD

Drawing Description

POTABLE AND FIRE WATER RETICULATION DETAILS

Scale AS SHOWN Drawn TM Date 20/08/2024

Consultant Project No. MD1075 Drawing No. MD-1075-012 Rev T01

DOW Drawing number

WIMS no. 044044

Stamped by Plans Approval Committee

ISSUED FOR TENDER