

Room Schedule			
Number	Name	Area	Floor Finish
1	Grade R Ablutions	14.61 m²	Wood Floated
2	Disabled Toilet	3.46 m²	Wood Floated

1 Ground Storey Plan
1 : 50

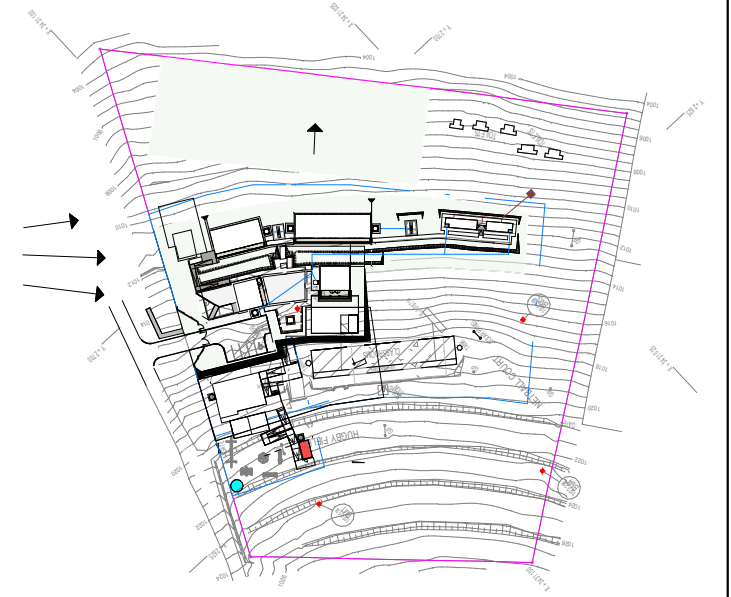
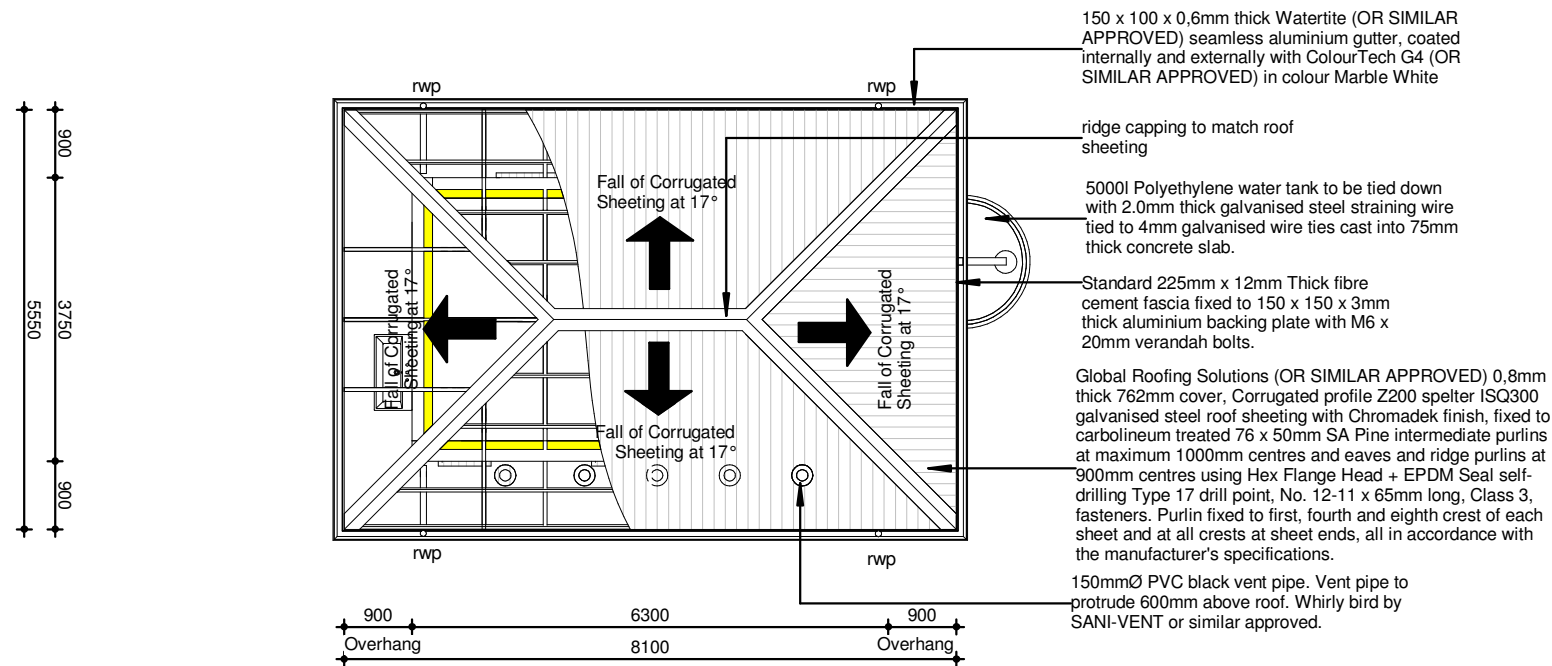


REVISION			
rev.	date	name	description
02	20/02/17	ZM	Dimensions to height of facebrick plinth on elevations and sections added wall height to toilet cubicles reduced to 1200 and doors made half height to suite G4 changes to G1 W7 changes to W3

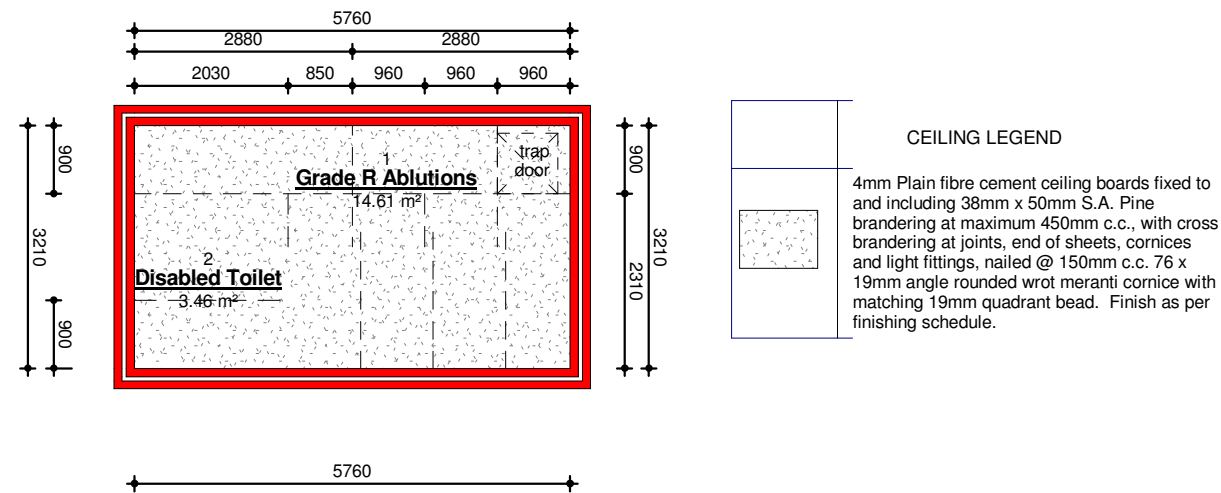
RECOMMEND	Approver
ISSUED	Designer
DRAWN	Author
SCALE	As indicated
DATE	28 February 2017

PROJECT	
CABANE JUNIOR SECONDARY SCHOOL	

EMIS NUMBER	200400546
CO-ORDINATES	31°37'14.17"S 28°47'18.75"E
DRAWING TITLE	GROUND STOREY
PROJ NO	0405
DWG NO	100A
REV.	PR02



2
101A
Roof Plan
1 : 100



1
101A
Ceiling Plan
1 : 100

QUEENSTOWN
P.O. Box 1500, Queenstown, 5320
Tel.(045) 839 - 4777 Fax.(045) 839 - 3716
Email: qtn@ikamva-architects.co.za

IKAMVA
architects

CLIENT

IMPLEMENTING AGENT

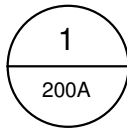
CLIENT
PROVINCE OF THE EASTERN CAPE ROADS & PUBLIC WORKS

REVISION			
rev.	date	name	description
02	20/02/17	ZM	Dimensions to height of facebrick plinth on elevations and sections added wall height to toilet cubicles reduced to 1200 and doors made half height to suite G4 changes to G1 W7 changes to W3

RECOMMEND	Approver
ISSUED	Designer
DRAWN	Author
SCALE	As indicated
DATE	28 February 2017

PROJECT
CABANE JUNIOR SECONDARY SCHOOL

EMIS NUMBER	200400546	
CO- ORDINATES	31°37'14.17"S /28°47'18.75"E	
DRAWING TITLE	ROOF PLAN AND CEILING PLAN	
PROJ NO 0405	DWG NO 101A	REV. PR02

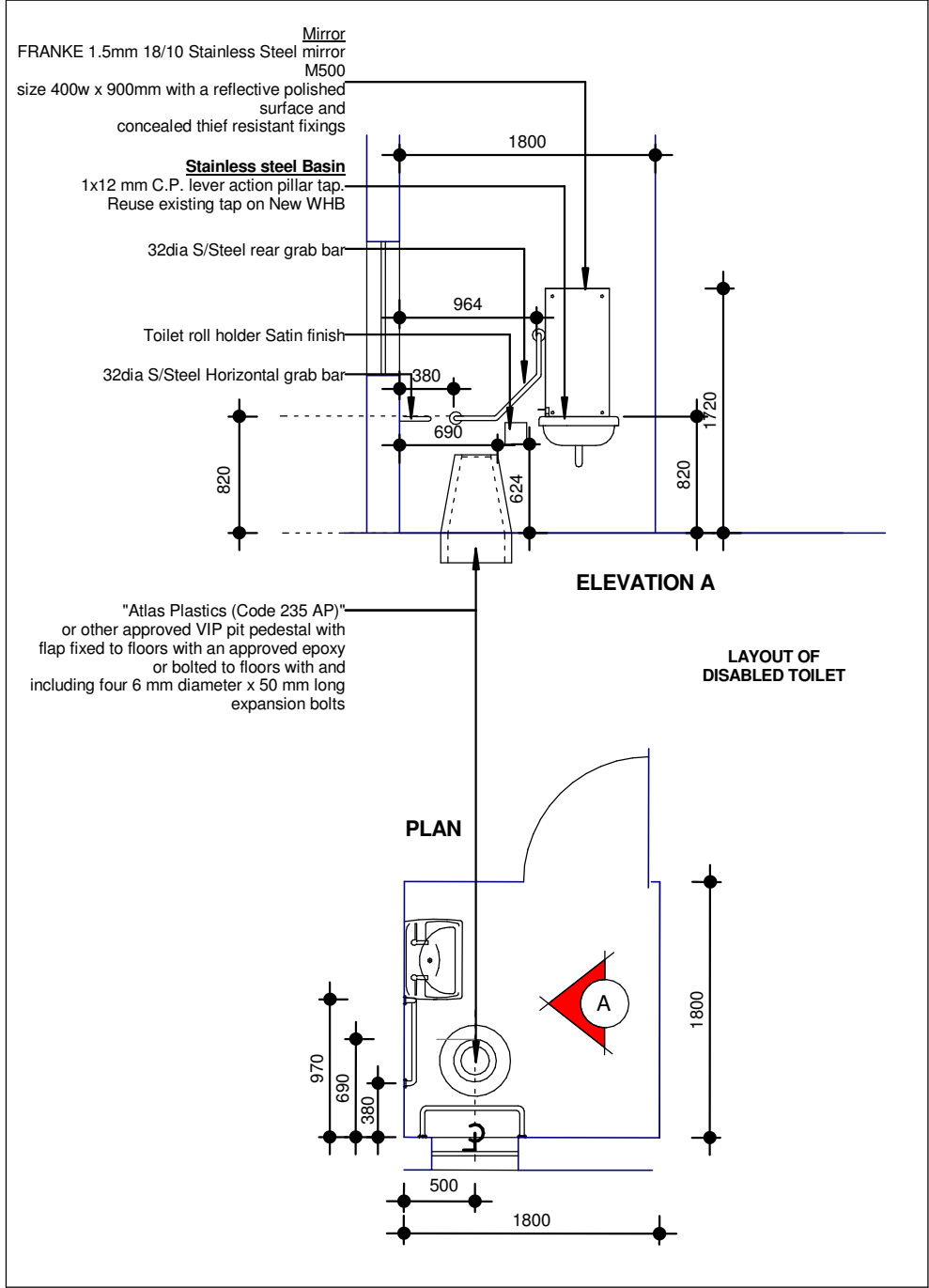


1 : 50

WINDOWS:
Refer to Window Schedule.

EXTERNAL - Brick on edge to match adjacent wall. End bricks to be solids.

INTERNAL - As per Finishes Schedule.



Z:\Projects\Projects 0405 Cabane - ISS\CD\0405 PR\PR0405 100 PR03 Grade R Ablutions.rvt

QUEENSTOWN
P.O. Box 1500, Queenstown, 5320
Tel.(045) 839 - 4777 Fax.(045) 839 - 3716
Email: qtn@ikamva-architects.co.za

IKAMVA
architects



IMPLEMENTING AGENT

CLIENT
**PROVINCE OF THE EASTERN CAPE ROADS &
PUBLIC WORKS**

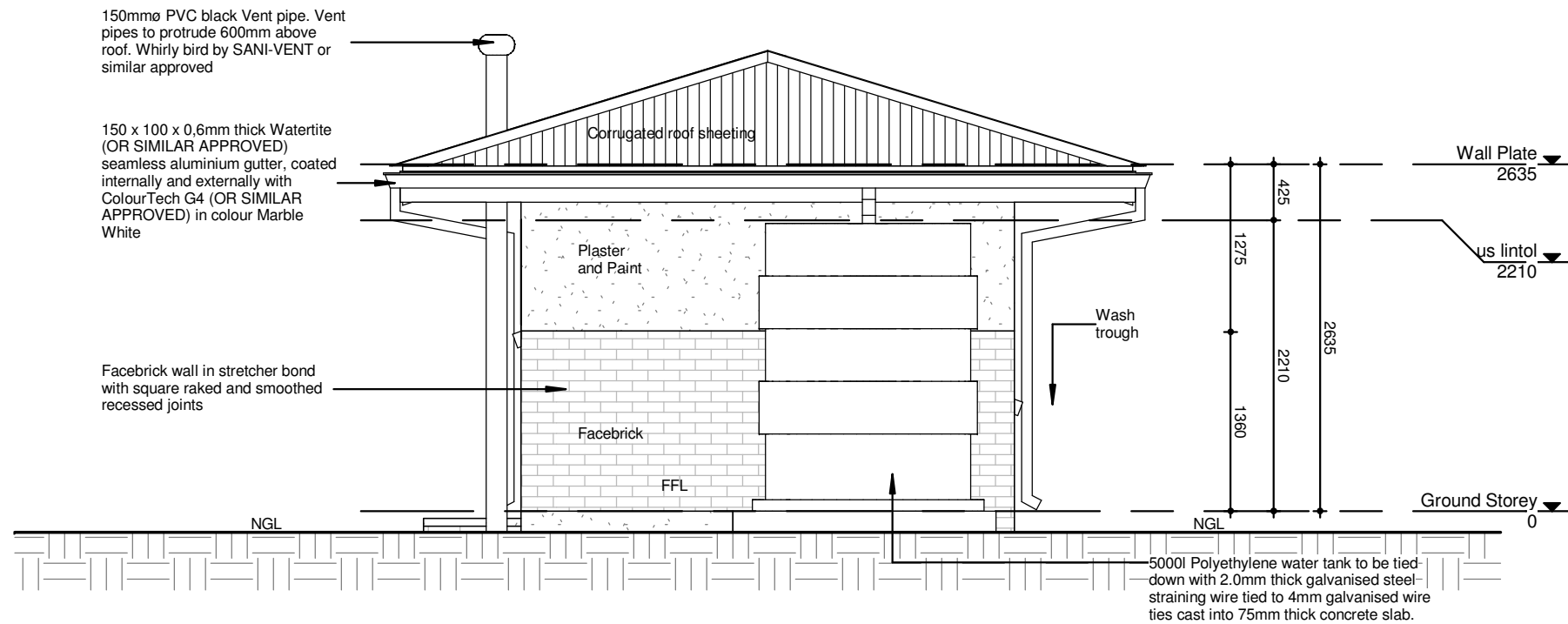
REVISION			
rev.	date	name	description

RECOMMEND	Approver
ISSUED	Designer
DRAWN	Author
SCALE	1 : 50
DATE	28 February 2017

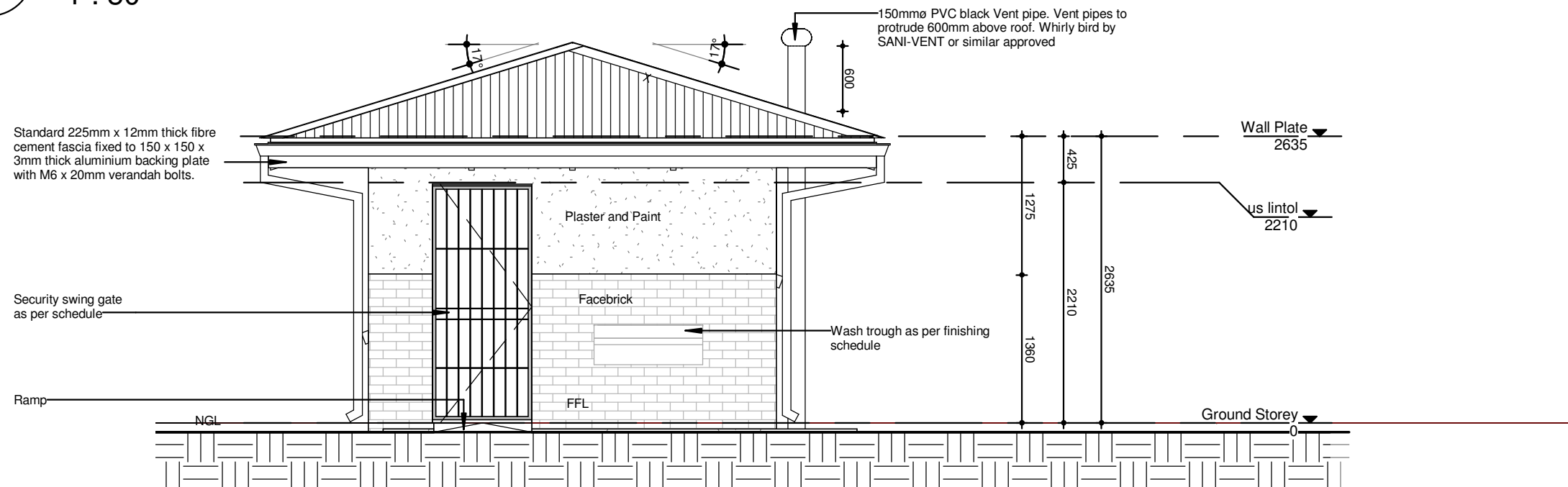
PROJECT

**CABANE JUNIOR
SECONDARY SCHOOL**

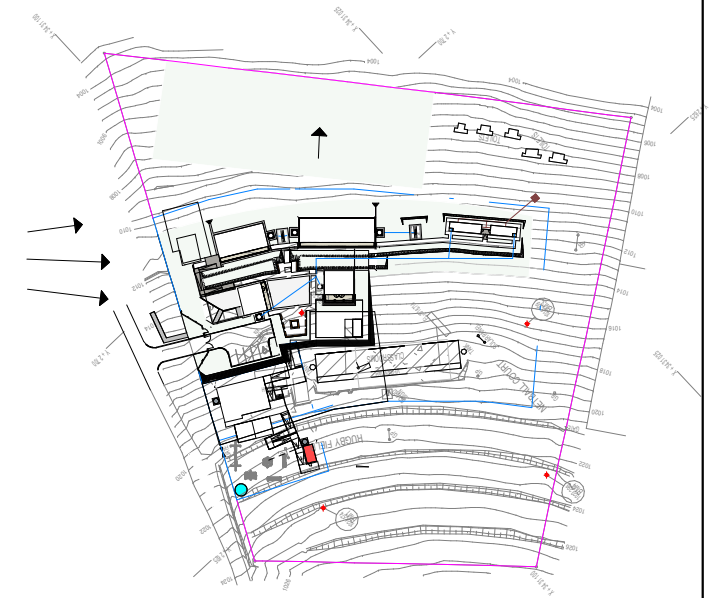
EMIS NUMBER	200400546	
CO- ORDINATES	31°37'14.17"S /28°47'18.75"E	
DRAWING TITLE DISABLED TOILET DETAIL		
PROJ NO 0405	DWG NO 201	REV. PR00



1
300A
Left Elevation
1 : 50



2
300A
Right Elevation
1 : 50



Z:\Projects\Projects\0405 Cabane - ISS\CD\000 PR\PR030405 100 PR03 Grade - R Ablation.dwg

QUEENSTOWN
P.O. Box 1500, Queenstown, 5320
Tel.(045) 839 - 4777 Fax.(045) 839 - 3716
Email: qtn@kamva-architects.co.za

KAMVA
architects



CLIENT
PROVINCE OF THE EASTERN CAPE ROADS & PUBLIC WORKS

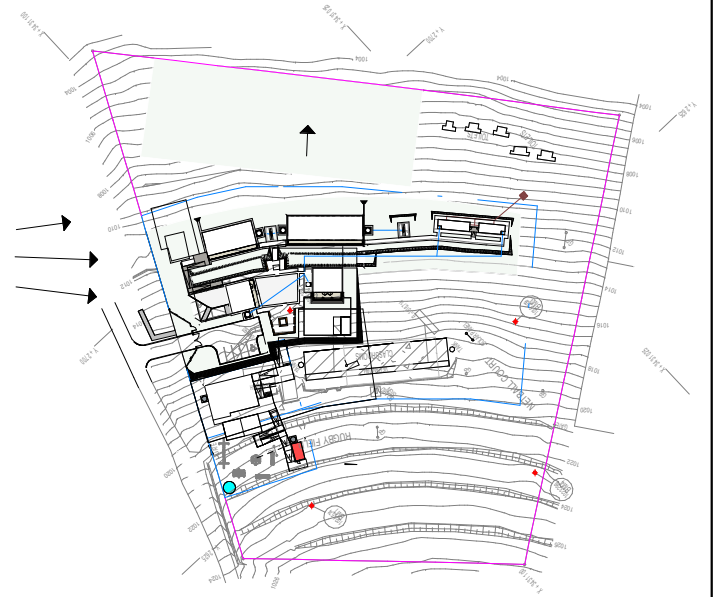
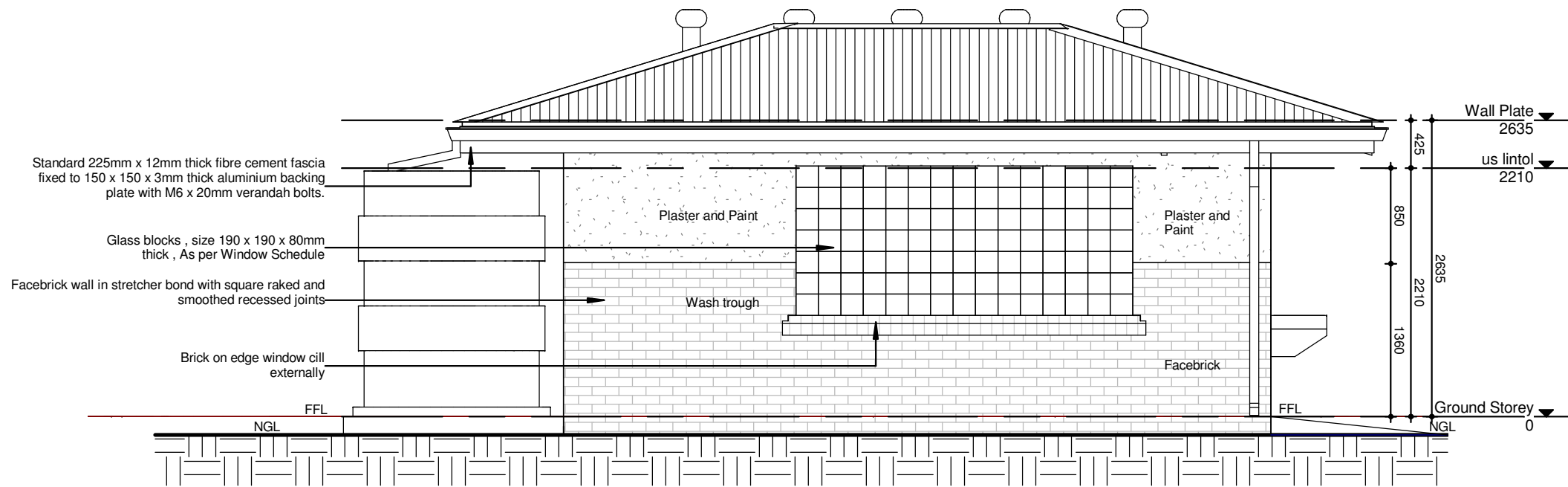
IMPLEMENTING AGENT
idit
Independent development trust

REVISION			
rev.	date	name	description
02	20/02/17	ZM	Dimensions to height of facebrick plinth on elevations and sections added wall height to toilet cubicles reduced to 1200 and doors made half height to suite G4 changes to G1 W7 changes to W3

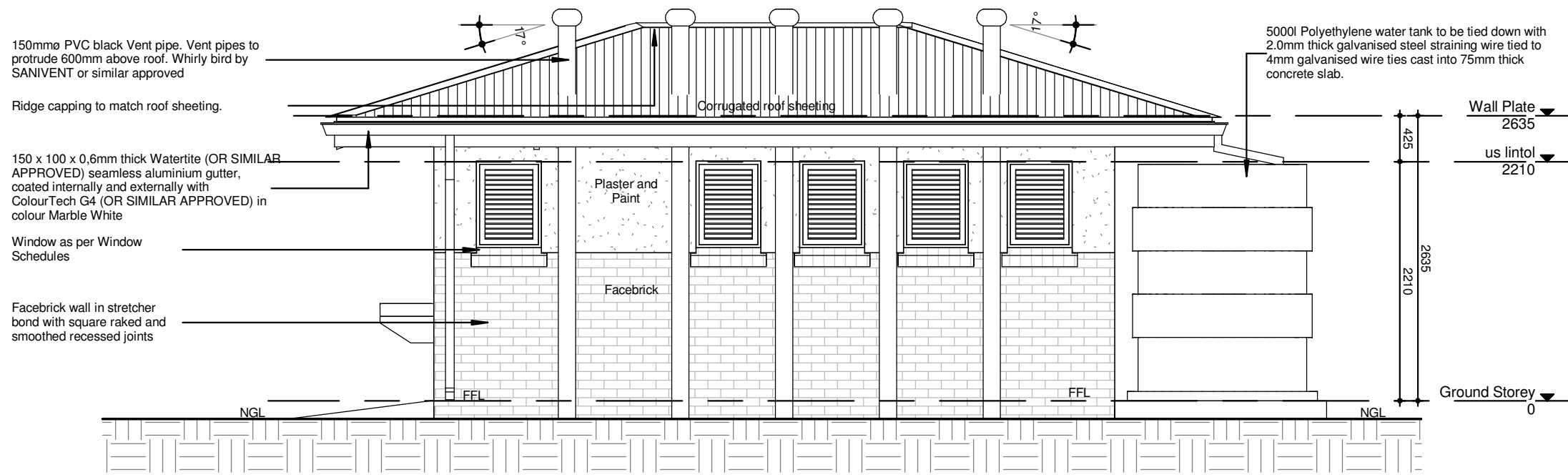
RECOMMEND	Approver
ISSUED	Designer
DRAWN	Author
SCALE	As indicated
DATE	28 February 2017

PROJECT
CABANE JUNIOR SECONDARY SCHOOL

EMIS NUMBER	200400546
CO-ORDINATES	31°37'14.17"S 28°47'18.75"E
DRAWING TITLE	ELEVATIONS
PROJ NO	0405
DWG NO	300A
REV.	PR02



2
301A
Front Elevation
1 : 50



1
301A
Back Elevation
1 : 50

QUEENSTOWN
P.O. Box 1500, Queenstown, 5320
Tel.(045) 839 - 4777 Fax.(045) 839 - 3716
Email: qtn@ikamva-architects.co.za

IKAMVA
architects



CLIENT
PROVINCE OF THE EASTERN CAPE ROADS & PUBLIC WORKS

IMPLEMENTING AGENT
idit
Independent development trust

REVISION			
rev.	date	name	description
02	20/02/17	ZM	Dimensions to height of facebrick plinth on elevations and sections added wall height to toilet cubicles reduced to 1200 and doors made half height to suite G4 changes to G1 W7 changes to W3

RECOMMEND	Approver
ISSUED	Designer
DRAWN	Author
SCALE	As indicated
DATE	28 February 2017

PROJECT
CABANE JUNIOR SECONDARY SCHOOL

EMIS NUMBER	200400546	
CO-ORDINATES	31°37'14.17"S /28°47'18.75"E	
DRAWING TITLE	ELEVATIONS	
PROJ NO 0405	DWG NO 301A	REV. PR02

Z:\Projects\Projects\0405 Cabane - ISS\CD\000 PR\PR02\0405 100 PR02 Grade - R Abulovs.rvt