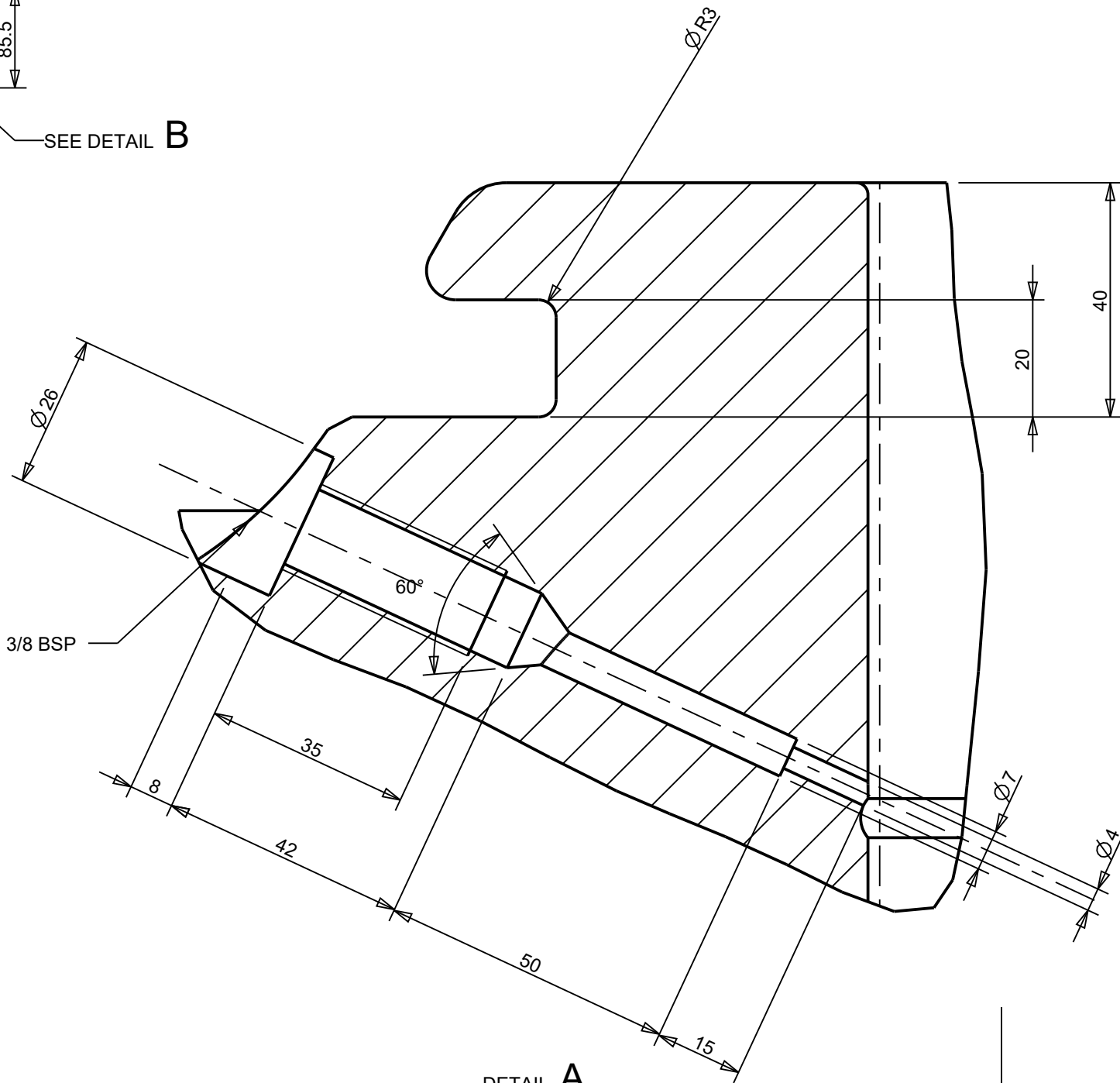


DETAIL B
SCALE 2:5



DETAIL A
SCALE 1:1

NOTE:

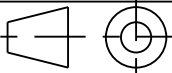
- 1) $\sqrt[6.3]{}$ ALL OVER EXCEPT WHERE OTHERWISE INDICATED.
REMOVE ALL SHARP EDGES.
- 2) STENCIL ON EACH WHEEL AS PER RS/ME/SP/021.
- 3) THE SUPPLIER MUST MACHINE THE WHEEL TREAD PROFILE NO.22 (RSA_088_0001_234) UP TO TOP OF THE FLANGE BUT THE FLANGE THICKNESS AT 32MM WHEEL WIDTH AT 137MM.
- 4) FORGED WHEELS TO BE 100% MACHINED.
NO FORGED SURFACES ALLOWED ON THE SURFACE OF THE WHEELS.
- 5) EDGES DEBURRED.
- 6) TENDERERS ARE TO SUPPLY DIMENSIONED DRAWINGS WITH TENDERS SHOWING THE SECTION BETWEEN THE RIM AND THE BOSS OF THE WHEEL THEY PROPOSE TO SUPPLY.
- 7) MAXIMUM ALLOWABLE ECCENTRICITY BETWEEN ROUGH BORE AND TREAD AT TAPPING LINE, 0.2mm.
- 8) WHEELS TO CONFORM TO THE REQUIREMENTS OF RS/ME/SP/021 FOR WROUGHT STEEL WHEELS.
- 9) ROTUNDITY-MAX ALLOWABLE GAP BETWEEN TREAD AND A RING GAUGE: 0.025
- 10) PROTECTION AS PER RS/ME/SP/021.
- 11) CONDEMNING LIMIT GROOVE TO BE AS PER MANUFACTURER'S FEA AT DIA = 1140mm

FOR FEA PURPOSES	
Condemning limit (worn diameter)	1140mm
Axle load	25.5T
Designed maximum speed	100km/h
Wheel bore nominal size	252mm
Wheel interference fit	0.27 - 0.32mm

COPYRIGHT
THIS DRAWING TOGETHER WITH THE COPYRIGHT
IS THE PROPERTY OF
TRANSNET
THIS DRAWING OR ANY PART THEREOF IS NOT
TO BE COPIED OR OTHERWISE REPRODUCED
OR USED FOR MANUFACTURE OR ANY OTHER
PURPOSE WITHOUT THE WRITTEN PERMISSION
FROM
CHIEF EXECUTIVE,
TRANSNET ENGINEERING

A-2

PROJECTION



ASSEMBLY DRG No.	DRAWN	N.C.L.
	CHECKED	N.T.N.
CLASS 21E	APPROVED	B.E.D.
TYPE ELECTRIC LOCOMOTIVE	DATE	2021-10-05
	SCALE	1:5
DOCUMENT REFERENCE No.	PD_PEL_KLP_DRW_167Z	

KILNER PARK		WHEELS	
WHEEL		MATERIAL	
1220mm LOCOWHEEL		STEEL	
21E		RS/ME/SP/021	
		CLASS C	
TRANSNET ENGINEERING		SHEET 1 OF 1	
		No.	
		PELG 176Z 0568	
		REV. -	

AMENDMENTS	
MASS	690.58 Kg