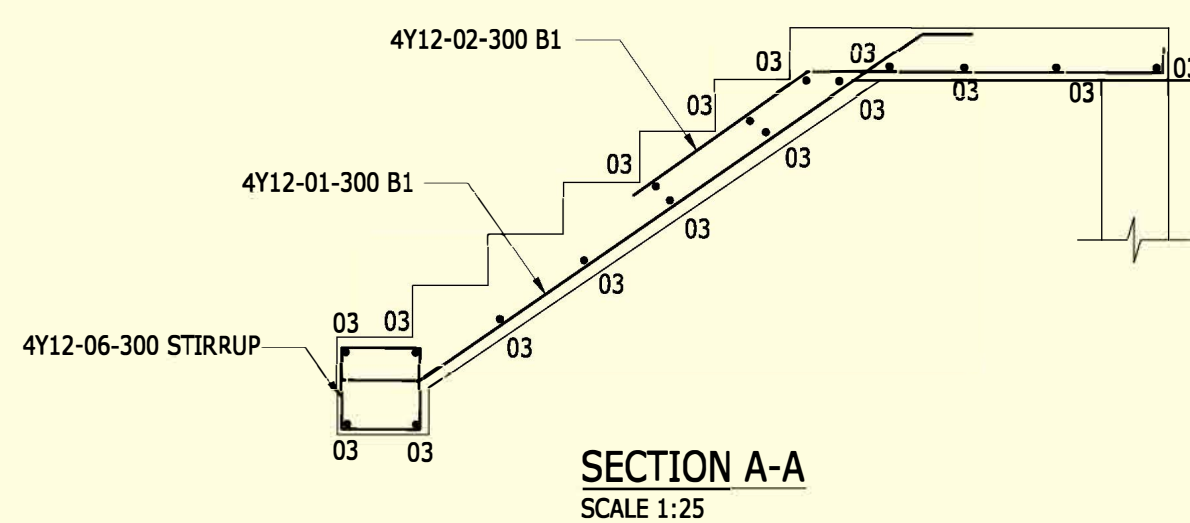


ELEVATION :TYPICAL BRICK COLUMN BASE
850x850x250 DP 15 No.OFF
SCALE 1:25



1. REINFORCEMENT TO SANS 920 AND SANS 282
2. COVER TO REINFORCEMENT:

COLUMN BASE	50mm
STRIP FOOTING	50mm
STAIRS	30mm
3. MINIMUM BAR LAP LENGTH TO BE 50 x BAR DIA
Y10 = 500mm
Y12 = 600mm
Y16 = 800mm

REINFORCING LEGEND:

T - TOP
M - MIDDLE
B - BOTTOM
T1 - FIRST TOP LAYER
T2 - SECOND TOP LAYER
B1 - FIRST BOTTOM LAYER
B2 - SECOND BOTTOM LAYER
ABR - ALTERNATE BARS REVERSED
ALT - ALTERNATING BARS
NF - NEAR FACE
FF - FAR FACE
EF - EACH FACE
EW - EACH WAY

REINFORCING NOTATION:

10 - Y12- 01 - 250 T1

- BAR PLACEMENT
- CENTRES
- BAR MARK
- BAR TYPE AND DIAMETER
- NUMBER OF BARS

NOTES:

1. THIS DRAWING IS TO BE READ IN CONJUNCTION WITH ALL RELEVANT ARCHITECTS', ENGINEERS AND SERVICES DRAWINGS AS WELL AS SPECIFICATION.
2. ANY DISCREPANCIES AND AMBIGUITIES ON THE ENGINEERS DRAWINGS TO BE REPORTED IMMEDIATELY BY MEANS OF AN RFI (REQUEST FOR INFORMATION).
3. LEVELS AND DIMENSIONS TO BE CHECKED BEFORE ANY WORK COMMENCES. DIMENSIONS ARE NOT TO BE SCALED.
4. GENERALLY ALL CONCRETE WORK IS TO BE IN ACCORDANCE WITH EITHER THE CONTRACT SPECIFICATIONS, SANS 1200, SANS 0100 OR SANS 0161.
5. ALL REINFORCEMENT STEEL TO BE CHECKED BY THE ENGINEER BEFORE ANY CONCRETE IS CAST. ENSURE THAT THE ENGINEER IS NOTIFIED OF THE INSPECTION DATE IN REASONABLE TIME BEFORE THE CAST TO ALLOW FOR TRAVEL ARRANGEMENTS.
6. CONCRETE STRENGTH TO BE AS FOLLOWS, UNLESS OTHERWISE INDICATED:

10 MPa	BLINDING:
30 MPa	R.C. STRIP FOOTINGS:
30 MPa	R.C. BASES:
20 MPa	SURFACE BED:
30 MPa	STUB COLUMNS:
15 MPa	APRON:
30 MPa	STAIRS:
- THE ABOVE MENTIONED STRENGTH IS TO BE ACHIEVED AT 28 DAYS WITH 19mm APPROVED STONE
7. UNLESS OTHERWISE INDICATED, THE MINIMUM CONCRETE COVER TO MAIN REINFORCEMENT SHALL BE:

30mm	STUB COLUMNS:
50mm	STRIP FOOTING
50mm	BASES:
25mm (TOP)	SURFACE BED & APRONS
30mm	STAIRS:
8. ALL CONCRETE TO BE MOIST CURED FOR MINIMUM OF 7 DAYS AFTER FINAL SET OF CONCRETE USING A METHOD APPROVED BY THE ENGINEER.
9. NO HOLES OR CHASES SHALL BE CUT OR FORMED IN CONCRETE UNLESS INDICATED ON DRAWINGS, DETAILED IN SPECIFICATIONS OR APPROVED BY ENGINEER.
10. NO CONDUITS, PIPES OR ELECTRICAL OR MECHANICAL EQUIPMENT SHALL BE CAST INTO CONCRETE UNLESS INDICATED ON DRAWINGS, DETAILED IN SPECIFICATIONS OR APPROVED BY ENGINEER.
11. STRIPPING OF FORMWORK AS PER SPECIFICATION AND ONLY WITH APPROVAL OF ENGINEER.
STRIPPING OF SHUTTERING CAN TAKE PLACE AFTER 14 DAYS, UNLESS OTHERWISE INDICATED. BACK PROP TO BE IN PLACE FOR A MINIMUM OF 28 DAYS.
12. FINISHES OF CONCRETE ACCORDING TO ARCHITECT'S SPECIFICATIONS.
13. BRICKFORCE AT EVERY 4TH COURSE
14. MIN BEARING CAPACITY 150kPa

NOTES:

1. DO NOT SCALE THIS DRAWING.
2. WORK IN FIGURED DIMENSIONS ONLY. ANY DISCREPANCIES ON THIS DRAWING TO BE BROUGHT TO THE ENGINEERS ATTENTION PRIOR TO IMPLEMENTATION OF ANY WORK.
3. STEEL REINFORCING SHALL COMPLY WITH SANS 920.
4. BENDING OF STEEL REINFORCING SHALL COMPLY WITH SANS 282.
5. MINIMUM LAPS IN REINFORCEMENT TO BE 50 X BAR DIAMETER UNLESS SHOWN OTHERWISE.
6. REINFORCEMENT THAT IS TOO LONG SHOULD BE 'PULLED' INTO SLAB RATHER THAN CUTTING IT.
7. STOOLS AT 1000MM CENTRES BOTH WAYS ARE TO SIT ON THE B1 LAYER AND ARE TO SUPPORT THE T2 LAYER UNLESS SHOWN OTHERWISE.
8. COVER TO REINFORCEMENT TO BE 30MM UNLESS SHOWN OTHERWISE.
9. ALL BARS REFERRED TO AS DOWEL BARS ARE TO BE GROUTED 150 MM INTO CONCRETE USING HILTI HIT RE 500.

CLIENT



CONSULTANT



Gauteng Office (Head Office)

GladAfrica House, Hertford Office Park
90 Bekker Road, Vorna Valley, Midrand, 1686
P.O Box 6723 Halfway House 1685
Tel. +27 11 312 2537/2584
Fax +27 11 805 1905
www.glad africa.com

	NAME	REG. NO.	SIGNATURE
DRAWN	MN PHAHLAMOHLAKA	N/A	N/A
DESIGNED	E. TLOMATSANA	2017305033	

PROJECT DESCRIPTION

TROMPSBURG SCHOOL

DRAWING TITLE
MOTOR MECHANIC WORKSHOP
REINFORCEMENT

STATUS LEGEND		SHEET SIZE	
I	= INFORMATION	A1	
CV	= CONCEPT AND VIABILITY		
D	= DESIGN DEVELOPMENT	SCALE	
T	= TENDER		
C	= CONSTRUCTION	AS SHOWN	
AB	= AS BUILT		
DISCIPLINE	PROJECT NUMBER	STATUS	REVISION
STRUCTURAL	CE00092-ST-MMW-300	T	0

**FOR
TENDER**