

**GENERAL NOTES**

This drawing is issued for Electrical purposes only, and should be read in conjunction with the Electrical Specification, Specification and Regulations.

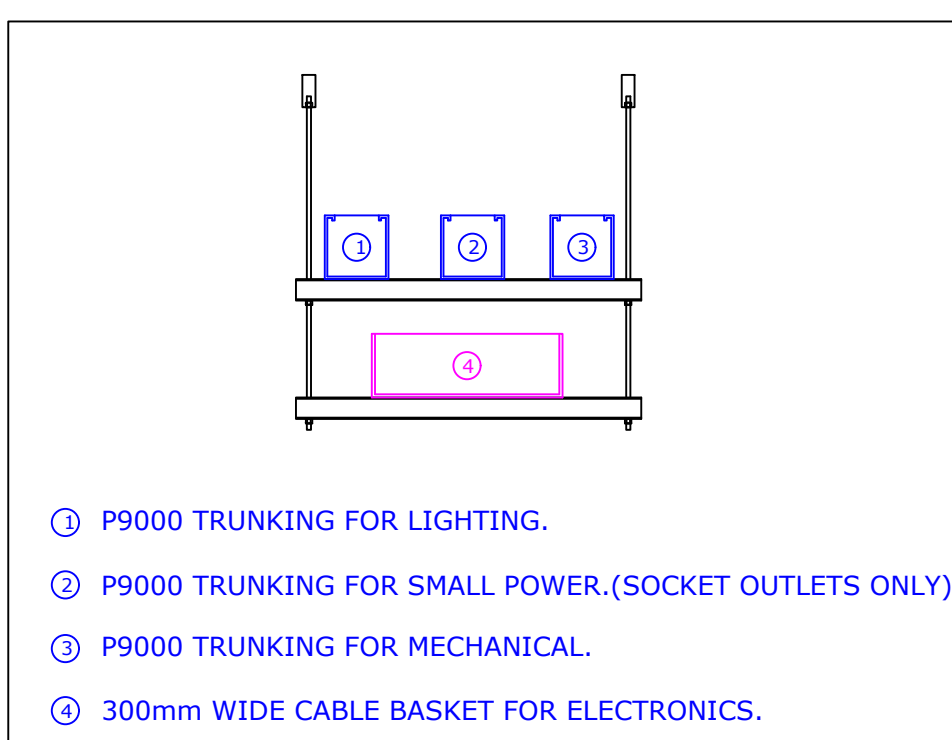
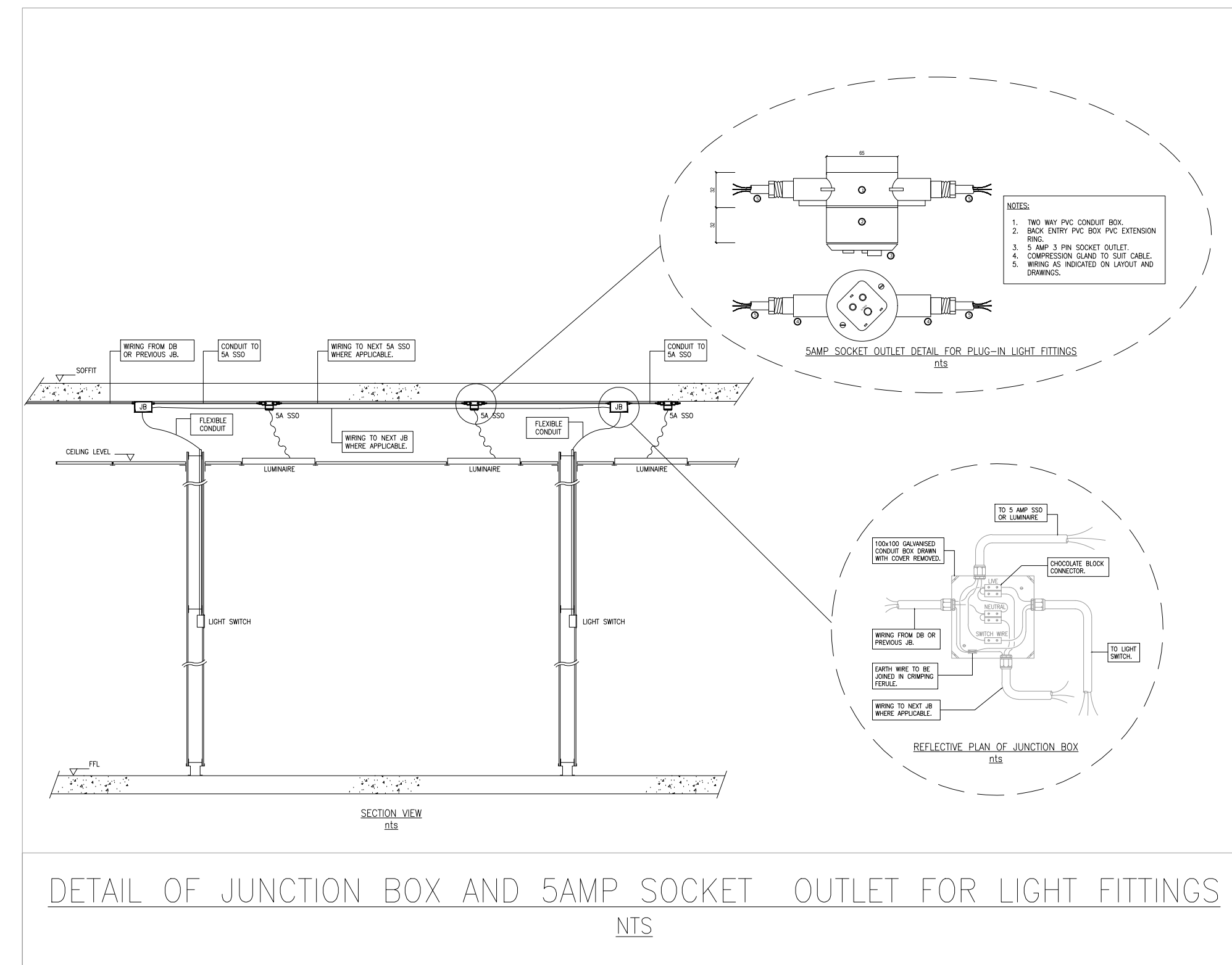
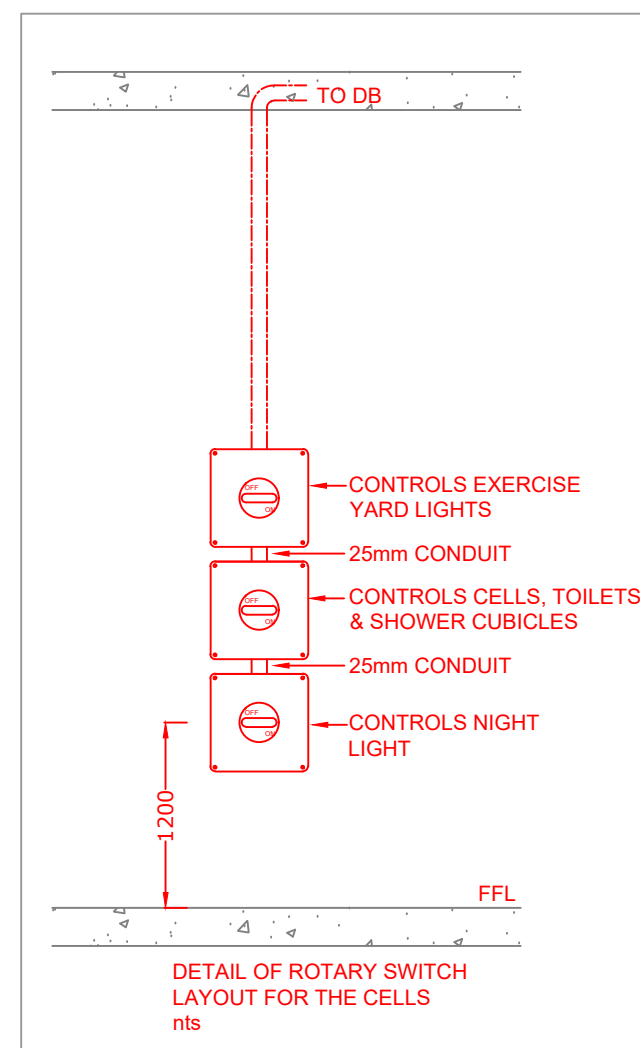
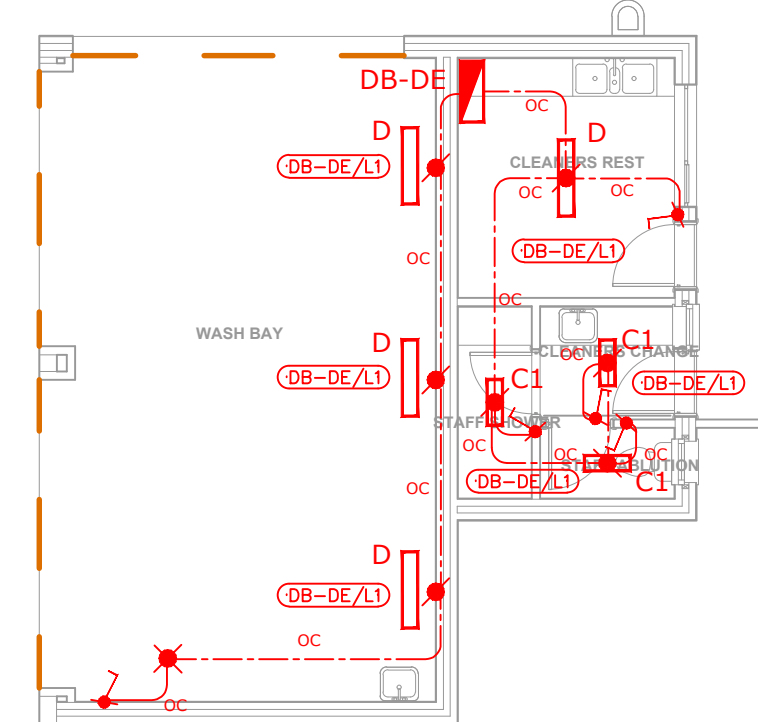
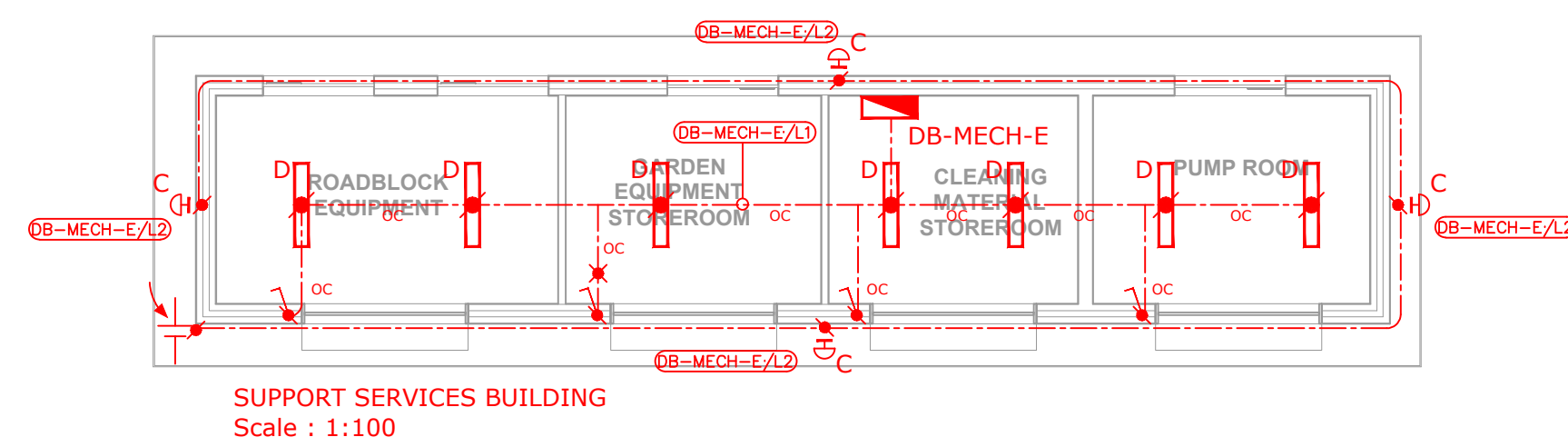
Refer to Architects and Structural Drawings for all building dimensions, latest building revisions and services.

Do not scale this drawing.

All work to comply with relevant Standards, Codes of Practice, Specification and Regulations.

Notwithstanding anything to the contrary, all rights reserved. No part of this drawing may be reproduced in any material form (including photocopying or storage in any medium) or by electronic means and whether or not transiently or incidentally to some other use of this drawing. In addition, this drawing may not be used for any purpose or reason other than for which it was originally issued, without written permission of the author.

- DRAWING NOTES**
- LIGHT SWITCHES TO BE MOUNTED AT 1100mm AFFL UNLESS OTHERWISE STATED.
- EXTERNAL LIGHTS TO BE AT 2300mm AFFL (BULKHEAD).
- OCCUPANCY SENSORS TO BE SET AT 30min. TIME SETTING
- ① 3 - LEVER LIGHT SWITCH  
② 2 - LEVER LIGHT SWITCH  
③ 2 - WAY LIGHT SWITCH  
④ EXIT SIGNS ABOVE DOORS (E) TO BE MOUNTED AT 2300mm AFFL  
⑤ EXIT SIGNS IN PASSAGES (E1) TO BE SUSPENDED FROM CEILING  
⑥ FITTINGS (12) MOUNTED AT 3900mm AFFL  
⑦ PHOTOCELL MOUNTED BELOW ROOF EAVES  
⑧ REFER TO DETAIL FOR SWITCH LAYOUT  
⑨ SERVICE DUCT LIGHTING TO BE WALL MOUNTED AT 2300mm AFFL



DETAIL B  
CEILING VOID CABLE LADDER/BASKET AND P9000  
TRUNKING DETAIL  
NTS

*JMK*

Approved in Principle  
Justin McKelvie-King  
Pr Eng : 20120548

REV	DATE	BY	REVISIONS
B	12/11/24	CM	Revised to Client's Request
A	18/09/24	CM	Light Switches to Offices Removed
O	13/09/24	CM	Original Issue



PROJECT INFORMATION	
Makhaza Police Station Electrical Installation	
Ground Floor Lighting Layout	
PROJECT NO.	22207
DRAWING NO.	100
SHEET	1
DATE	24/11/23
CHECKED	AD
SCALE	1:100

NOTES: (1) - Contractor to ensure max distance between draw boxes 20 metres notwithstanding anything to contrary. (2) - Draw boxes required after every second 90 deg. bend or 180 deg. total of slow bends. (3) - All unwired conduits to be provided with draw wires. These will be withdrawn and checked at random. (4) - Cast in conduits to be spaced 35mm. minimum.	
1. 100x100 CONDUIT BOX 2. 100x100 CONDUIT BOX AT 500AFFL 3. 100x100 CONDUIT BOX AT 1400AFFL 4. 100x50 CONDUIT BOX 5. 100x50 CONDUIT BOX AT 500AFFL 6. 100x50 CONDUIT BOX AT 1100AFFL 7. ROUND CONDUIT BOX	8. ROUND DRAW BOX 9. 100x100 DRAW BOX 10. 100x50 BOX BEHIND POWER SKIRTING 11. CONDUIT TURNED UP ("D" FOR DOWN) 12. DOWN CONDUIT TO EARTH OR EARTH TIE 13. ROUND CONDUIT BOX FOR: 14. DM - DOOR MONITOR 15. CAM - CAMERA 16. ACCESS ALARM 17. ACCESS CONTROL 18. CARD READER 19. COMMUNICATION/INTERCOM 20. BOM - BACK GROUND MUSIC 21. EL - ELECTRIC LOCK/STRIKE 22. SD - SMOKE DETECTOR 23. HD - HEAT DETECTOR
24. 20mm. DIA. CONDUIT 25. 25mm. DIA. CONDUIT 26. 32mm. DIA. CONDUIT 27. 50mm. DIA. CONDUIT 28. SECTION OF CONDUIT OMITTED FOR CLARITY 29. SURF - SURFACE 30. TWIN AND EARTH 31. CABLE ROUTE	32. OVERHEAD CAST-IN 33. OVERHEAD ON SURFACE OR LAD ON CEILING 34. FLOOR SLAB CAST-IN 35. POWER SKIRTING 36. TRUNKING 37. CABLE SLEEVE 38. CABLE TRAY/LADDER 39. SQUARE GALV. STEEL DRAW TRAY SIZE AS SHOWN 40. TELEPHONE JUNCTION BOX 41. INTERCOM JUNCTION BOX 42. DATA/COMMS JUNCTION BOX 43. SECURITY, ETC. JUNCTION BOX 44. DISTRIBUTION BOARD POSITION 45. DB-1 BOARD DESIGNATION NUMBER
46. 16AMP. SWITCHED SOCKET OUTLET (SSO) 47. DOUBLE 16AMP. SSO 48. 16AMP. SSO ON PEDESTAL 49. 16AMP. CLEAN SSO WITH RED COVER PLATE, SQUARE EARTH AND PLUG TOP 50. 16AMP. CLEAN SSO WITH RED COVER PLATE, SQUARE EARTH AND PLUG TOP ON PEDESTAL 51. 3 PHASE SSO 52. 16AMP. SQUARE PIN SSO 53. 16AMP. 3 PIN UNSWITCHED SOCKET OUTLET	54. INTERMEDIATE LIGHT SWITCH 55. SINGLE LEVER ONE WAY LIGHT SWITCH 56. TWO WAY LIGHT SWITCH 57. LIGHT SWITCH WITH MOTION SENSOR 58. FLUORESCENT LUMINAIRE 59. BULKHEAD/DOWNLIGHTER, ETC. 60. WALL MOUNTED LUMINAIRE 61. POLE MOUNTED LUMINAIRE 62. TWO POLE ISOLATOR 63. THREE POLE ISOLATOR 64. FOUR POLE ISOLATOR 65. AIR CONDITIONING 66. TELEPHONE POINT 67. TELEPHONE POINT ON PEDESTAL 68. DIRECT OUTSIDE LINE TELEPHONE POINT (CALL BOX) 69. TV OUTLET 70. DATA/COMMS OUTLET 71. INTERCOM REDIFFUSION SPEAKER POSITION
72. BELL PUSH 73. BELL OUTLET 74. SIGN POINT 75. CLOCK OUTLET 76. PHOTOCELL	77. REFERENCE TO QUANTITY i.e. 3No. 78. REFERENCE TO A DETAIL i.e. DETAIL 2. 79. REFERENCE TO AN ELECTRICAL NOTE i.e. NOTE 4. 80. REFERENCE TO A STANDARD DRAWING i.e. STANDARD DRAWING No.34 81. CABLE NUMBER - REFER CABLE SCHEDULE FOR DETAILS. 82. LUMINAIRE TYPE i.e. TYPE "T" - REFER LUMINAIRE SCHEDULE.