

# Annexure A

## **SOMKHANDA GAME RESERVE COMMUNITY PROJECT**

### **BUILDING MEASUREMENTS** (08/10/25)

#### **1. Main building and kitchen**







5.M



→ 7.071

→ 18.309

→ 9M



## Main Building

Front = 18.400 m

Roof Edge = 9.111 m

Corner = 10.212 m

btwn corners = 10.500 m

Middle = 5.514 m

---

## Main Kitchen

Roof Edge = 5 m

longer side = 13.500 m

btwn corners = 9 m

Corner = 7.071 m

Middle = 14 m x

---

## Bathroom

Roof Edge = 2.105 m

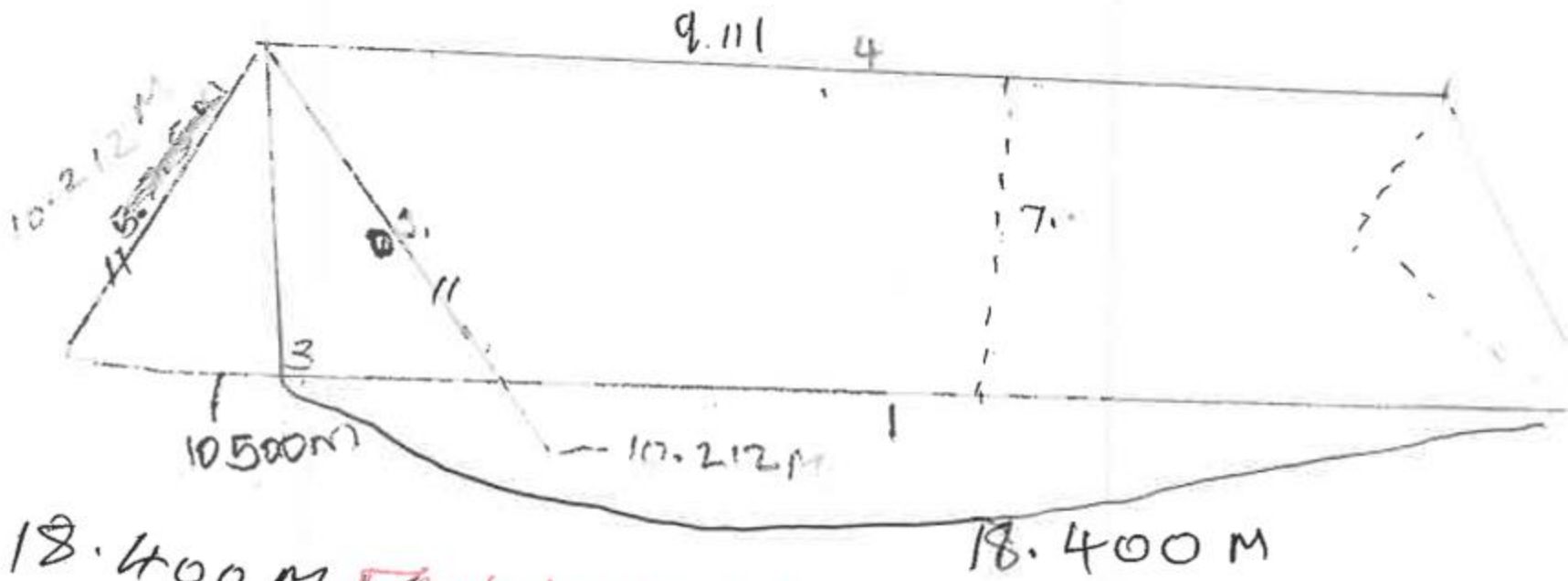
btwn corners = 5.100

from longer side = 7.7 m

Corner = 3.692 m

---

# 1. Main building and kitchen



• 18.400 M *Front - longer side*

\*

• 5.514 M *- Middle*

• 9.111 M *Roof Edge*

• ~~7.5 M~~ 10.212 *Gable Front*

# 1. MAIN BUILDING AND KITCHEN

1. 18.05 m / 18 400 Front

5 Kudu Lodge Room

2. ~~to~~ <sup>cancelled</sup> 6.972 + 2.603 = ?

3. 5.514 m

4. 9.111 - roof up (umqoko)

6.972 + 2.603 (2.9 verand) veran. = ? for 2

4. 9.111 roof - up 10m + 5m - 15° / 2 = 7.5m

2. VIEW SIDE DECK

6. Kudu Kitchen

1. 6.755 + 1.710 m =
2. 3.70 + 0.85 m =
3. 2.267 m + 0.85 m =
4. 3.455 + 0.695 m =
5. 4.362 + 1.392 m =
6. 3.675 m + 0.874 m =

3. BATHROOM

1. 2.105 m

2. 1.602 + 1.033

3. 7.7 m

1. 7.800 m / 2 =

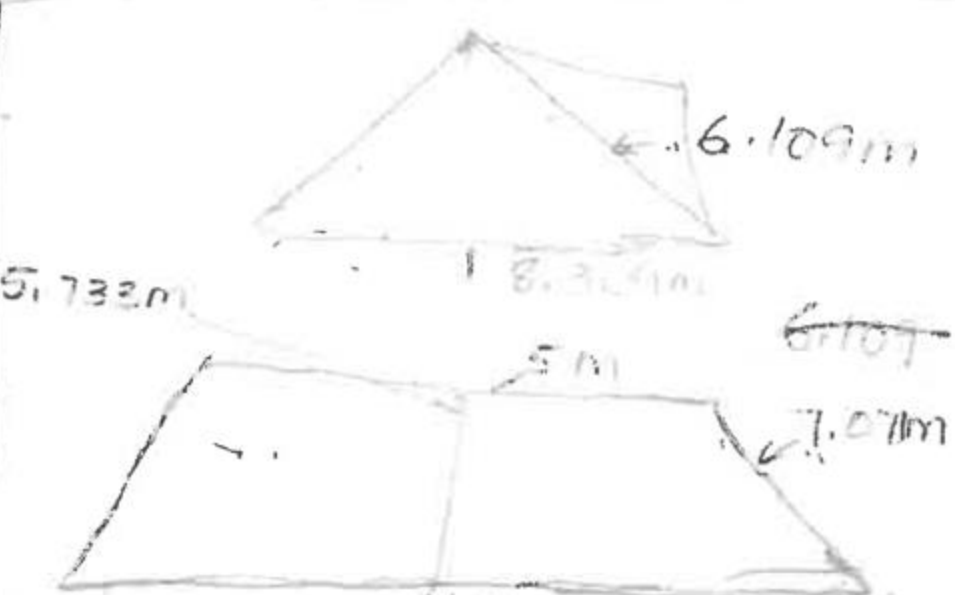
2. 5.100 m

7.800 m / 2 =

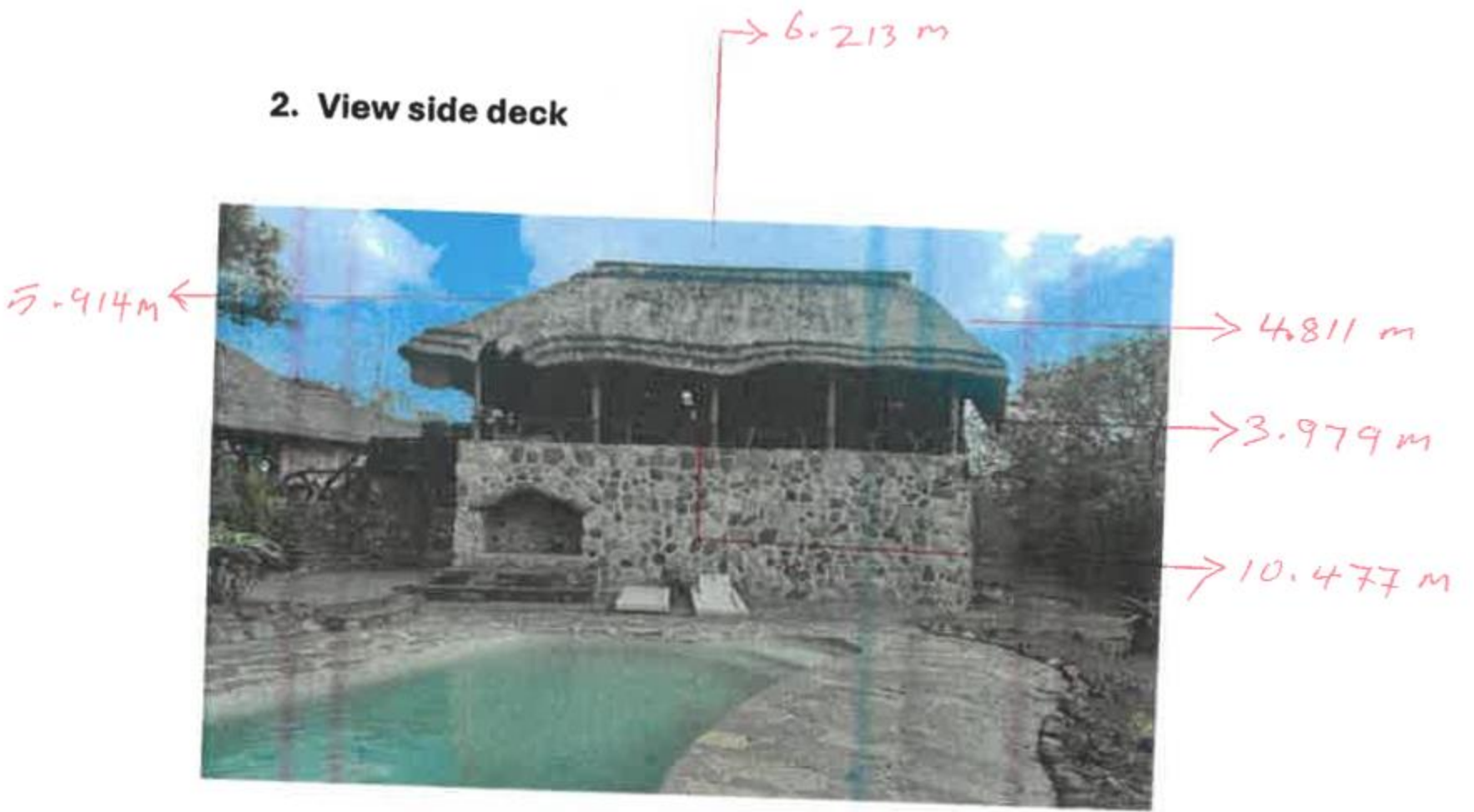


(Kitchen in main build)

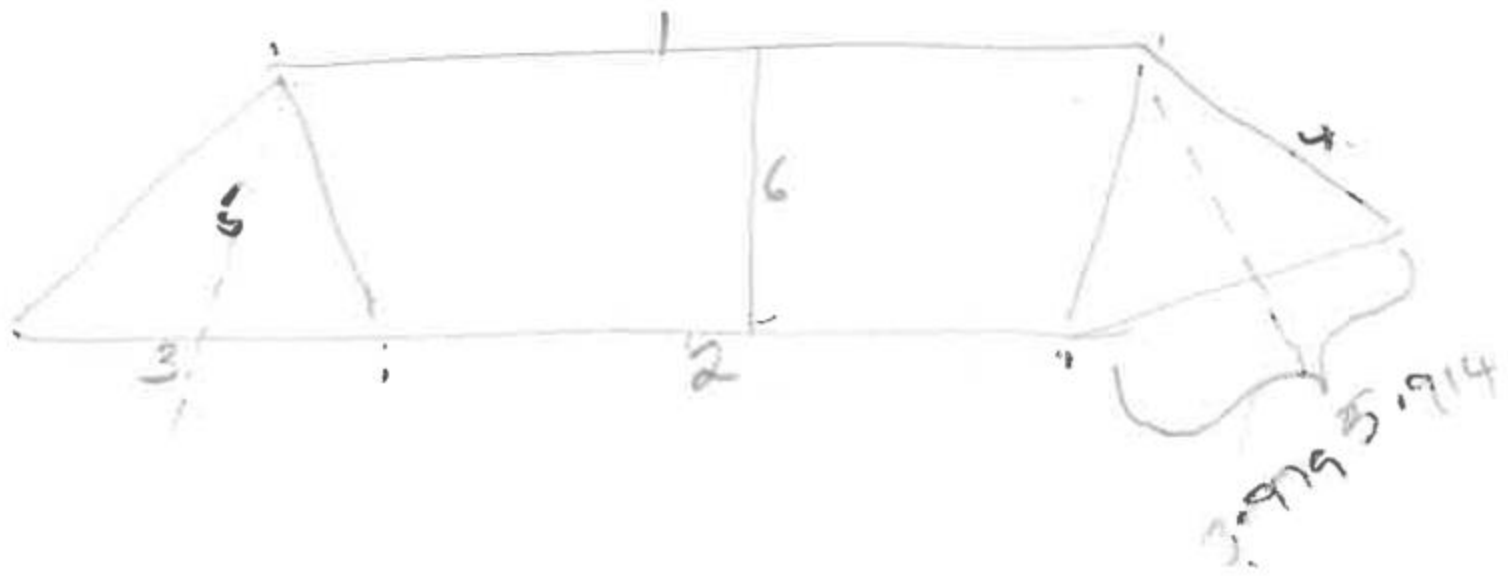
4. Kudu Lodge Room



2. View side deck

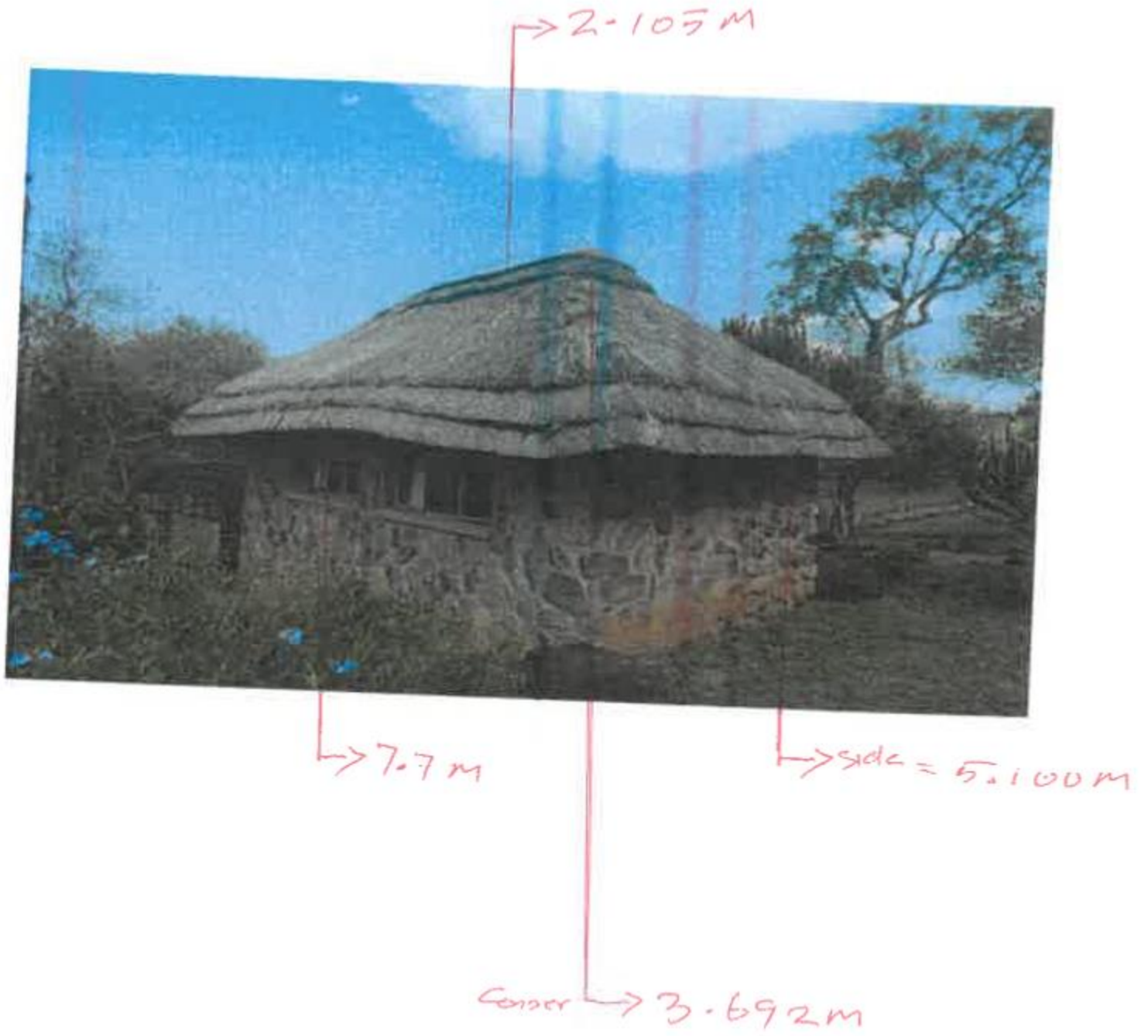


# GAME View - Side DECK



1. 6.213 m
2. 10.477 m
3. 5.914 m
4. 4.811 m
5. 3.979 m
6. 4.369 m.

### 3. Bathroom



Roof Edge = 2.105 m  
Between corners = 5.100 m  
longer side = 7.7 m  
Corner = 3.692 m

#### 4. Kudu Lodge Room







**5.Kudu kitchen**





# Head / Kitchen ?

