

POINT	Y - COORD	X - COORD
SOP-1	41696.933	2964090.245
SOP-2	41706.151	2964105.308
SOP-3	41755.19	2964075.768
SOP-4	41746.076	2964060.875

NOTES:

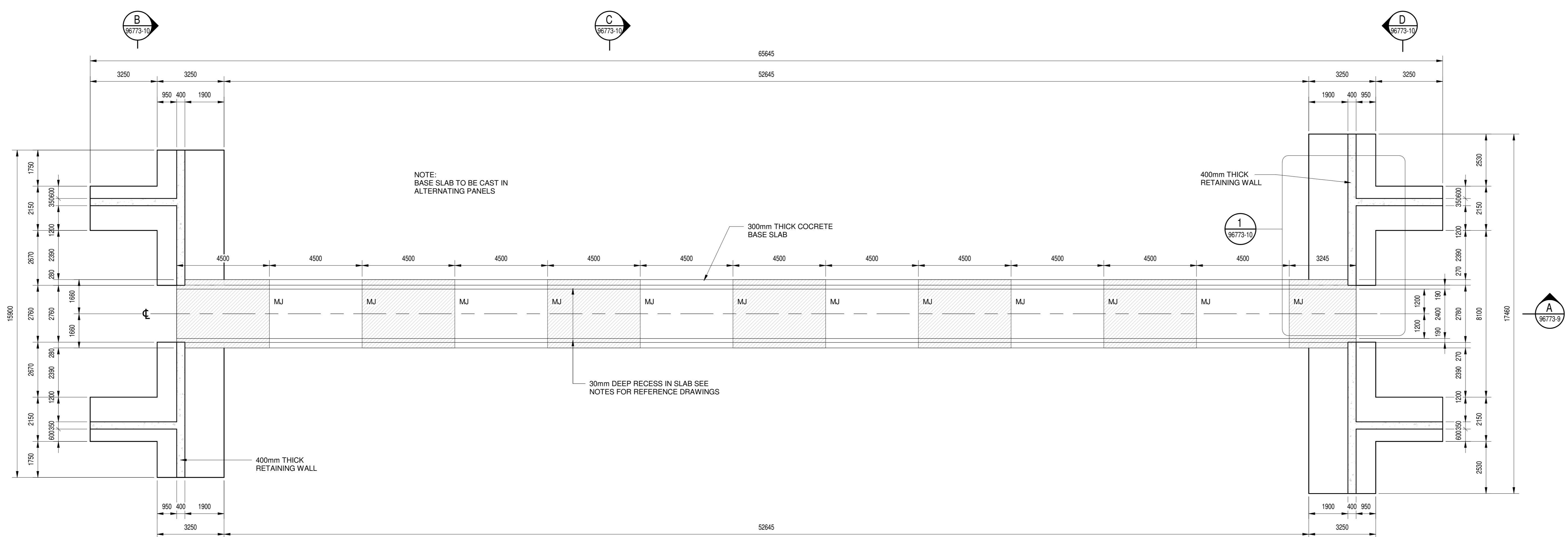
- GENERAL**
- THIS DRAWING IS TO BE READ IN CONJUNCTION WITH THE RELEVANT REFERENCE DRAWINGS AND TYPICAL DETAILS DRAWINGS LISTED IN THE REFERENCE DRAWINGS TABLE
 - ALL DIMENSIONS ON THIS DRAWING ARE IN MILLIMETERS
 - ALL DISCREPANCIES BETWEEN THIS DRAWING AND SHOULD BE BROUGHT TO THE ATTENTION OF THE ENGINEER
 - THE ENGINEER REQUIRES 24HRS NOTICE FOR ALL INSPECTIONS.

- EARTHWORKS**
- THE MAXIMUM SAFE BEARING PRESSURE 150kPa.
 - ENGINEER TO CONFIRM LEVEL OF TOP OF FOUNDATION ON SITE BEFORE EXCAVATION COMMENCES.
 - NO BACKFILLING SHALL COMMENCE UNTIL PERMISSION TO DO SO HAS BEEN GIVEN BY THE ENGINEER.
 - BACKFILLING SHALL BE COMPACTED IN 150 mm LAYERS.

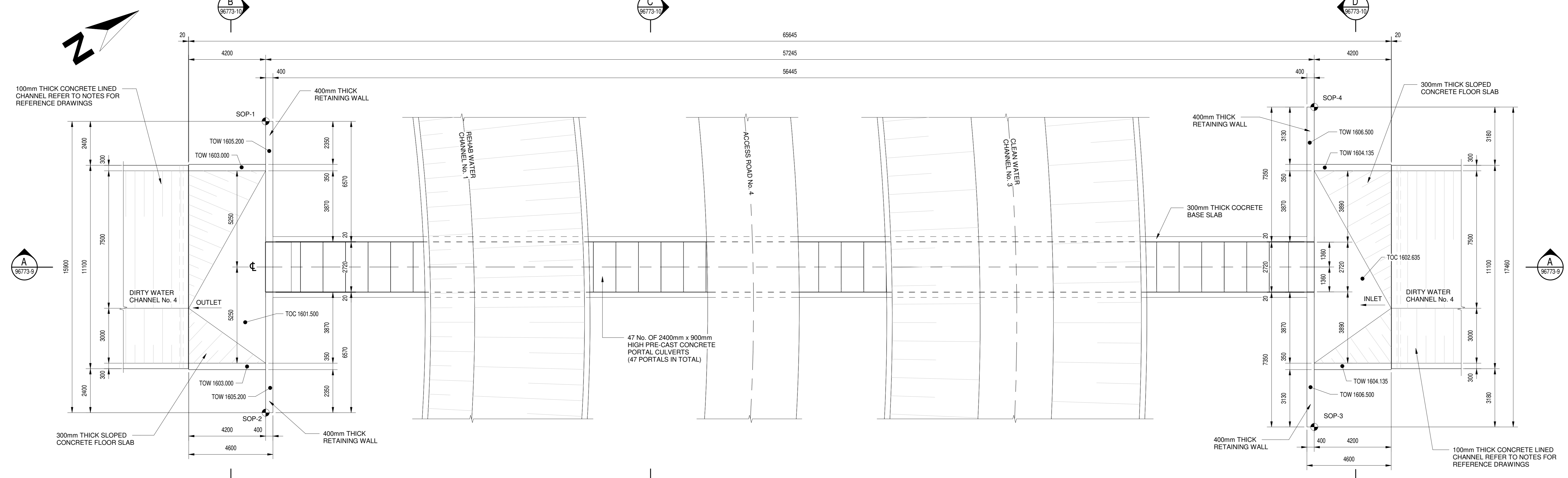
- CONCRETE**
- ALL CONCRETE WORK TO COMPLY WITH SABS 1200G.
 - ALL CULVERTS TO COMPLY WITH SABS 986.
 - CONCRETE GRADE:
 - STRIP FOUNDATIONS = 30/20
 - RETAINING WALLS = 30/20
 - BASE SLABS = 30/20
 - BUNDING & MASS CONCRETE = 15/20
 - ALL REBAR TO BE INSPECTED BY THE ENGINEER PRIOR TO CASTING CONCRETE.
 - EXPOSED RETAINING WALL AND HEADWALL SURFACES ARE TO HAVE A SMOOTH FINISH AND HIDDEN SURFACES TO HAVE A ROUGH FINISH.
 - ALL FOUNDATION EXCAVATIONS AND LEVELS TO BE INSPECTED BY THE ENGINEER PRIOR TO CASTING OF CONCRETE.
 - BASE SLAB TO BE CAST IN ALTERNATING PANELS WITH MOVEMENT JOINTS (MJ) AS DETAILED IN THE TYPICAL DETAILS DRAWINGS.
 - BASE SLAB AND CONCRETE SLABS TO BE HAVE A WOOD FLOAT FINISH.
 - THE MINIMUM CONCRETE COVER TO ALL REINFORCEMENT IS 50 mm.
 - SIX CUBES TO BE TAKEN PER POUR, THREE TO BE TESTED AT SEVEN DAYS, THE REMAINDER AT TWENTY-EIGHT DAYS. THE RESULTS TO BE FORWARDED TO THE ENGINEER TIMELY.
 - ALL STRUCTURAL CONCRETE TO BE CURED FOR A MINIMUM OF FIVE DAYS. THE METHOD OF CURING SHALL BE APPROVED BY THE ENGINEER.
 - ALL EXPOSED CONCRETE CORNERS TO HAVE 20 x 20 mm CHAMFER.

- REFERENCE DRAWINGS**
- FOR GENERAL ARRANGEMENT AND CULVERT LOCALITY SEE DWG : 0.61/96345-03
 - FOR CULVERT TYPICAL DETAILS SEE DWG : 0.61/96772-01
 - FOR CULVERT LAYER WORKS SEE DWG : 0.61/96772-01
 - FOR ACCESS ROADS SEE DWG : 0.61/96772-01
 - FOR CHANNEL DETAILS SEE DWG : 0.61/96772-02
 - FOR REINFORCEMENT DETAILS SEE DWGS : 0.61/96773-20 - 0.61/96773-36
 - FOR JOINT DETAILS SEE DWG : 0.61/96772-01
 - BASE SLAB TO BE CAST IN ALTERNATING PANELS

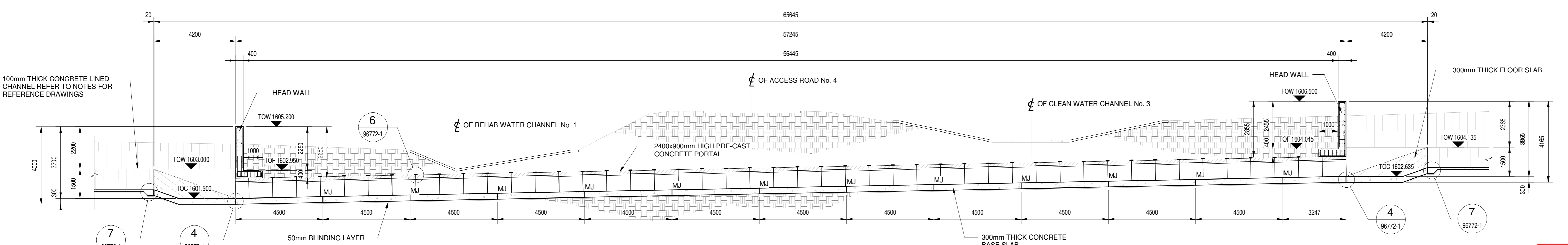
- ABBREVIATIONS**
- TOC - TOP OF CONCRETE
 - TOP - TOP OF FOUNDATION
 - TOW - TOP OF WALL
 - SOP - SETTING OUT POINT
 - MJ - MOVEMENT JOINT
 - IJ - ISOLATION JOINT
 - NGL - NATURAL GROUND LEVEL



BASE SLAB LAYOUT OF CULVERT No. 8
1:100



LAYOUT OF CULVERT No. 8
1:100



SECTION A
1:100

NO	DATE	BY	CHKD	APPD	SCALE	DESCRIPTION
01	15/05/20	ET/BS/202			AS SHOWN	ISSUED FOR TENDER

**TUTUKA POWER STATION
ASH DISPOSAL FACILITY
SITE SERVICES
CULVERT No. 8 (1 OF 2)**

ESKOM HOLDINGS LTD.
REG. NO. 2002/15027/08

Scale: 0.61 / 96773

Sheet: 9 of 01

ISSUED FOR TENDER

THIS DRAWING HAS BEEN CREATED ON A C.A.D. SYSTEM
ANY AMENDMENT MUST BE EFFECTED ON THE SAME SYSTEM