

APPENDIX C

Piling Record : Contiguous Piled Wall

Piling Record : Foundation Piles

Soil Nail Quality Control Sheet

Pull-out Test Record : Soil Nail Type 1

Pull-out Test Record : Soil Nail Type 2



DRENNAN MAUD (PTY) LTD
GEOTECHNICAL ENGINEERS AND ENGINEERING GEOLOGISTS

T: +27 31 201 8992

Reg. No. 2014/038872/07

Project No: WIMS 044044 / 31319 Project Name: New Psych. Ward, PS Hospl.
 Client: DOH c/o DOPW Contractor: _____
 Contract No: _____ Foreman: _____
 Weather conditions: _____ Signature: _____
 Date: _____

PILING RECORD - CONTIGUOUS PILED WALL

| PILE | | | LEVELS | | | | | REINFORCEMENT | | | | CONCRETE | | | | NOTES | |
|-----------|------|--------|-----------|---------|----------|------------------------|-----------------|----------------|---------|-----|-----------------|----------|----------------|----------------------|--------------------------|-------|---|
| Name / No | Type | Ø (mm) | Pile Base | Cut-off | Trim (m) | Groundwater (bel. EGL) | Pile Length (m) | Soil Sample No | No bars | Ø | Cage length (m) | Links | Strength (Mpa) | Batch No / Date Cast | Volume (m ³) | | Cube No |
| P100 | CFA | 600 | 41 550 | 48 470 | 0.580 | | 7.5 | | 7 | Y25 | 7.5 | R8-300 | 35 | | | | All information regarding obstructions and any other information regarding interruptions and delays in the sequence of work. Any circumstance that would effect load-carrying capacity. |
| P101 | CFA | 600 | 41 550 | 48 470 | 0.580 | | 7.5 | | 7 | Y25 | 7.5 | R8-300 | 35 | | | | |
| P102 | CFA | 600 | 41 550 | 48 470 | 0.580 | | 7.5 | | 7 | Y25 | 7.5 | R8-300 | 35 | | | | |
| P103 | CFA | 600 | 41 550 | 48 470 | 0.580 | | 7.5 | | 7 | Y25 | 7.5 | R8-300 | 35 | | | | |
| P104 | CFA | 600 | 41 550 | 48 470 | 0.580 | | 7.5 | | 7 | Y25 | 7.5 | R8-300 | 35 | | | | |
| P105 | CFA | 600 | 41 550 | 48 470 | 0.580 | | 7.5 | | 7 | Y25 | 7.5 | R8-300 | 35 | | | | |
| P106 | CFA | 600 | 41 550 | 48 470 | 0.580 | | 7.5 | | 7 | Y25 | 7.5 | R8-300 | 35 | | | | |
| P107 | CFA | 600 | 41 550 | 48 470 | 0.580 | | 7.5 | | 7 | Y25 | 7.5 | R8-300 | 35 | | | | |
| P108 | CFA | 600 | 41 550 | 48 470 | 0.580 | | 7.5 | | 7 | Y25 | 7.5 | R8-300 | 35 | | | | |
| P109 | CFA | 600 | 41 550 | 48 470 | 0.580 | | 7.5 | | 7 | Y25 | 7.5 | R8-300 | 35 | | | | |
| P110 | CFA | 600 | 41 550 | 48 470 | 0.580 | | 7.5 | | 7 | Y25 | 7.5 | R8-300 | 35 | | | | |
| P111 | CFA | 600 | 41 550 | 48 470 | 0.580 | | 7.5 | | 7 | Y25 | 7.5 | R8-300 | 35 | | | | |
| P112 | CFA | 600 | 41 550 | 48 470 | 0.580 | | 7.5 | | 7 | Y25 | 7.5 | R8-300 | 35 | | | | |
| P113 | CFA | 600 | 41 550 | 48 470 | 0.580 | | 7.5 | | 7 | Y25 | 7.5 | R8-300 | 35 | | | | |
| P114 | CFA | 600 | 41 550 | 48 470 | 0.580 | | 7.5 | | 7 | Y25 | 7.5 | R8-300 | 35 | | | | |
| P115 | CFA | 600 | 41 550 | 48 470 | 0.580 | | 7.5 | | 7 | Y25 | 7.5 | R8-300 | 35 | | | | |
| P116 | CFA | 600 | 41 550 | 48 470 | 0.580 | | 7.5 | | 7 | Y25 | 7.5 | R8-300 | 35 | | | | |
| P117 | CFA | 600 | 41 550 | 48 470 | 0.580 | | 7.5 | | 7 | Y25 | 7.5 | R8-300 | 35 | | | | |
| P118 | CFA | 600 | 41 550 | 48 470 | 0.580 | | 7.5 | | 7 | Y25 | 7.5 | R8-300 | 35 | | | | |
| P119 | CFA | 600 | 41 550 | 48 470 | 0.580 | | 7.5 | | 7 | Y25 | 7.5 | R8-300 | 35 | | | | |
| P120 | CFA | 600 | 41 550 | 48 470 | 0.580 | | 7.5 | | 7 | Y25 | 7.5 | R8-300 | 35 | | | | |
| P121 | CFA | 600 | 41 550 | 48 470 | 0.580 | | 7.5 | | 7 | Y25 | 7.5 | R8-300 | 35 | | | | |
| P122 | CFA | 600 | 41 550 | 48 470 | 0.580 | | 7.5 | | 7 | Y25 | 7.5 | R8-300 | 35 | | | | |
| P123 | CFA | 600 | 41 550 | 48 470 | 0.580 | | 7.5 | | 7 | Y25 | 7.5 | R8-300 | 35 | | | | |
| P124 | CFA | 600 | 41 550 | 48 470 | 0.580 | | 7.5 | | 7 | Y25 | 7.5 | R8-300 | 35 | | | | |
| P125 | CFA | 600 | 41 550 | 48 470 | 0.580 | | 7.5 | | 7 | Y25 | 7.5 | R8-300 | 35 | | | | |
| P126 | CFA | 600 | 41 550 | 48 470 | 0.580 | | 7.5 | | 7 | Y25 | 7.5 | R8-300 | 35 | | | | |
| P127 | CFA | 600 | 41 550 | 48 470 | 0.580 | | 7.5 | | 7 | Y25 | 7.5 | R8-300 | 35 | | | | |
| P200 | CFA | 700 | 36 855 | 52 775 | 0.580 | | 16.5 | | 8 | Y25 | 16.5 | R8-300 | 35 | | | | |
| P201 | CFA | 700 | 36 855 | 52 775 | 0.580 | | 16.5 | | 8 | Y25 | 16.5 | R8-300 | 35 | | | | |
| P202 | CFA | 700 | 36 855 | 52 775 | 0.580 | | 16.5 | | 8 | Y25 | 16.5 | R8-300 | 35 | | | | |
| P203 | CFA | 700 | 36 855 | 52 775 | 0.580 | | 16.5 | | 8 | Y25 | 16.5 | R8-300 | 35 | | | | |
| P204 | CFA | 700 | 36 855 | 52 775 | 0.580 | | 16.5 | | 8 | Y25 | 16.5 | R8-300 | 35 | | | | |
| P205 | CFA | 700 | 36 855 | 52 775 | 0.580 | | 16.5 | | 8 | Y25 | 16.5 | R8-300 | 35 | | | | |
| P206 | CFA | 700 | 36 855 | 52 775 | 0.580 | | 16.5 | | 8 | Y25 | 16.5 | R8-300 | 35 | | | | |
| P207 | CFA | 700 | 36 855 | 52 775 | 0.580 | | 16.5 | | 8 | Y25 | 16.5 | R8-300 | 35 | | | | |
| P208 | CFA | 700 | 36 855 | 52 775 | 0.580 | | 16.5 | | 8 | Y25 | 16.5 | R8-300 | 35 | | | | |
| P209 | CFA | 700 | 36 855 | 52 775 | 0.580 | | 16.5 | | 8 | Y25 | 16.5 | R8-300 | 35 | | | | |
| P210 | CFA | 700 | 36 855 | 52 775 | 0.580 | | 16.5 | | 8 | Y25 | 16.5 | R8-300 | 35 | | | | |
| P211 | CFA | 700 | 36 855 | 52 775 | 0.580 | | 16.5 | | 8 | Y25 | 16.5 | R8-300 | 35 | | | | |
| P212 | CFA | 700 | 36 855 | 52 775 | 0.580 | | 16.5 | | 8 | Y25 | 16.5 | R8-300 | 35 | | | | |
| P213 | CFA | 700 | 36 855 | 52 775 | 0.580 | | 16.5 | | 8 | Y25 | 16.5 | R8-300 | 35 | | | | |
| P214 | CFA | 700 | 36 855 | 52 775 | 0.580 | | 16.5 | | 8 | Y25 | 16.5 | R8-300 | 35 | | | | |
| P215 | CFA | 700 | 36 855 | 52 775 | 0.580 | | 16.5 | | 8 | Y25 | 16.5 | R8-300 | 35 | | | | |
| P216 | CFA | 700 | 36 855 | 52 775 | 0.580 | | 16.5 | | 8 | Y25 | 16.5 | R8-300 | 35 | | | | |
| P217 | CFA | 700 | 36 855 | 52 775 | 0.580 | | 16.5 | | 8 | Y25 | 16.5 | R8-300 | 35 | | | | |
| P218 | CFA | 700 | 36 855 | 52 775 | 0.580 | | 16.5 | | 8 | Y25 | 16.5 | R8-300 | 35 | | | | |
| P219 | CFA | 700 | 36 855 | 52 775 | 0.580 | | 16.5 | | 8 | Y25 | 16.5 | R8-300 | 35 | | | | |



DRENNAN MAUD (PTY) LTD
GEOTECHNICAL ENGINEERS AND ENGINEERING GEOLOGISTS

T: +27 31 201 8992

Reg. No. 2014/038872/07

Project No: WIMS 044044 / 31319 Project Name: New Psych. Ward, PS Hospl.
 Client: DOH c/o DOPW Contractor: _____
 Contract No: _____ Foreman: _____
 Weather conditions: _____ Signature: _____
 Date: _____

PILING RECORD - CONTIGUOUS PILED WALL

| PILE | | | LEVELS | | | | | REINFORCEMENT | | | | CONCRETE | | | | NOTES |
|-----------|------|--------|-----------|---------|----------|------------------------|-----------------|----------------|---------|-----|-----------------|----------|----------------|----------------------|--------------------------|-------|
| Name / No | Type | Ø (mm) | Pile Base | Cut-off | Trim (m) | Groundwater (bel. EGL) | Pile Length (m) | Soil Sample No | No bars | Ø | Cage length (m) | Links | Strength (Mpa) | Batch No / Date Cast | Volume (m ³) | |
| P220 | CFA | 700 | 36 855 | 52 775 | 0.580 | | 16.5 | | 8 | Y25 | 16.5 | R8-300 | 35 | | | |
| P221 | CFA | 700 | 36 855 | 52 775 | 0.580 | | 16.5 | | 8 | Y25 | 16.5 | R8-300 | 35 | | | |
| P222 | CFA | 700 | 36 855 | 52 775 | 0.580 | | 16.5 | | 8 | Y25 | 16.5 | R8-300 | 35 | | | |
| P223 | CFA | 700 | 36 855 | 52 775 | 0.580 | | 16.5 | | 8 | Y25 | 16.5 | R8-300 | 35 | | | |
| P224 | CFA | 700 | 36 855 | 52 775 | 0.580 | | 16.5 | | 8 | Y25 | 16.5 | R8-300 | 35 | | | |
| P225 | CFA | 700 | 36 855 | 52 775 | 0.580 | | 16.5 | | 8 | Y25 | 16.5 | R8-300 | 35 | | | |
| P226 | CFA | 700 | 36 855 | 52 775 | 0.580 | | 16.5 | | 8 | Y25 | 16.5 | R8-300 | 35 | | | |
| P227 | CFA | 700 | 36 855 | 52 775 | 0.580 | | 16.5 | | 8 | Y25 | 16.5 | R8-300 | 35 | | | |
| P228 | CFA | 700 | 36 855 | 52 775 | 0.580 | | 16.5 | | 8 | Y25 | 16.5 | R8-300 | 35 | | | |
| P229 | CFA | 700 | 36 855 | 52 775 | 0.580 | | 16.5 | | 8 | Y25 | 16.5 | R8-300 | 35 | | | |
| P230 | CFA | 700 | 36 855 | 52 775 | 0.580 | | 16.5 | | 8 | Y25 | 16.5 | R8-300 | 35 | | | |
| P231 | CFA | 700 | 36 855 | 52 775 | 0.580 | | 16.5 | | 8 | Y25 | 16.5 | R8-300 | 35 | | | |
| P232 | CFA | 700 | 36 855 | 52 775 | 0.580 | | 16.5 | | 8 | Y25 | 16.5 | R8-300 | 35 | | | |
| P233 | CFA | 700 | 36 855 | 52 775 | 0.580 | | 16.5 | | 8 | Y25 | 16.5 | R8-300 | 35 | | | |
| P234 | CFA | 700 | 36 855 | 52 775 | 0.580 | | 16.5 | | 8 | Y25 | 16.5 | R8-300 | 35 | | | |
| P235 | CFA | 700 | 36 855 | 52 775 | 0.580 | | 16.5 | | 8 | Y25 | 16.5 | R8-300 | 35 | | | |
| P236 | CFA | 700 | 36 855 | 52 775 | 0.580 | | 16.5 | | 8 | Y25 | 16.5 | R8-300 | 35 | | | |
| P237 | CFA | 700 | 36 855 | 52 775 | 0.580 | | 16.5 | | 8 | Y25 | 16.5 | R8-300 | 35 | | | |
| P238 | CFA | 700 | 36 855 | 52 775 | 0.580 | | 16.5 | | 8 | Y25 | 16.5 | R8-300 | 35 | | | |
| P239 | CFA | 700 | 36 855 | 52 775 | 0.580 | | 16.5 | | 8 | Y25 | 16.5 | R8-300 | 35 | | | |
| P240 | CFA | 700 | 36 855 | 52 775 | 0.580 | | 16.5 | | 8 | Y25 | 16.5 | R8-300 | 35 | | | |
| P241 | CFA | 700 | 36 855 | 52 775 | 0.580 | | 16.5 | | 8 | Y25 | 16.5 | R8-300 | 35 | | | |
| P242 | CFA | 700 | 36 855 | 52 775 | 0.580 | | 16.5 | | 8 | Y25 | 16.5 | R8-300 | 35 | | | |
| P243 | CFA | 700 | 36 855 | 52 775 | 0.580 | | 16.5 | | 8 | Y25 | 16.5 | R8-300 | 35 | | | |
| P244 | CFA | 700 | 36 855 | 52 775 | 0.580 | | 16.5 | | 8 | Y25 | 16.5 | R8-300 | 35 | | | |
| P245 | CFA | 700 | 36 855 | 52 775 | 0.580 | | 16.5 | | 8 | Y25 | 16.5 | R8-300 | 35 | | | |
| P246 | CFA | 700 | 36 855 | 52 775 | 0.580 | | 16.5 | | 8 | Y25 | 16.5 | R8-300 | 35 | | | |
| P247 | CFA | 700 | 36 855 | 52 775 | 0.580 | | 16.5 | | 8 | Y25 | 16.5 | R8-300 | 35 | | | |
| P248 | CFA | 700 | 36 855 | 52 775 | 0.580 | | 16.5 | | 8 | Y25 | 16.5 | R8-300 | 35 | | | |
| P249 | CFA | 700 | 36 855 | 52 775 | 0.580 | | 16.5 | | 8 | Y25 | 16.5 | R8-300 | 35 | | | |
| P250 | CFA | 700 | 36 855 | 52 775 | 0.580 | | 16.5 | | 8 | Y25 | 16.5 | R8-300 | 35 | | | |
| P251 | CFA | 700 | 36 855 | 52 775 | 0.580 | | 16.5 | | 8 | Y25 | 16.5 | R8-300 | 35 | | | |
| P252 | CFA | 700 | 36 855 | 52 775 | 0.580 | | 16.5 | | 8 | Y25 | 16.5 | R8-300 | 35 | | | |
| P253 | CFA | 700 | 36 855 | 52 775 | 0.580 | | 16.5 | | 8 | Y25 | 16.5 | R8-300 | 35 | | | |
| P254 | CFA | 700 | 36 855 | 52 775 | 0.580 | | 16.5 | | 8 | Y25 | 16.5 | R8-300 | 35 | | | |
| P255 | CFA | 700 | 36 855 | 52 775 | 0.580 | | 16.5 | | 8 | Y25 | 16.5 | R8-300 | 35 | | | |
| P256 | CFA | 700 | 36 855 | 52 775 | 0.580 | | 16.5 | | 8 | Y25 | 16.5 | R8-300 | 35 | | | |
| P257 | CFA | 700 | 36 855 | 52 775 | 0.580 | | 16.5 | | 8 | Y25 | 16.5 | R8-300 | 35 | | | |
| P258 | CFA | 700 | 36 855 | 52 775 | 0.580 | | 16.5 | | 8 | Y25 | 16.5 | R8-300 | 35 | | | |
| P259 | CFA | 700 | 36 855 | 52 775 | 0.580 | | 16.5 | | 8 | Y25 | 16.5 | R8-300 | 35 | | | |
| P260 | CFA | 700 | 36 855 | 52 775 | 0.580 | | 16.5 | | 8 | Y25 | 16.5 | R8-300 | 35 | | | |
| P261 | CFA | 700 | 36 855 | 52 775 | 0.580 | | 16.5 | | 8 | Y25 | 16.5 | R8-300 | 35 | | | |
| P262 | CFA | 700 | 36 855 | 52 775 | 0.580 | | 16.5 | | 8 | Y25 | 16.5 | R8-300 | 35 | | | |
| P263 | CFA | 700 | 36 855 | 52 775 | 0.580 | | 16.5 | | 8 | Y25 | 16.5 | R8-300 | 35 | | | |
| P264 | CFA | 700 | 36 855 | 52 775 | 0.580 | | 16.5 | | 8 | Y25 | 16.5 | R8-300 | 35 | | | |
| P300 | CFA | 700 | 38 000 | 50 920 | 0.580 | | 13.5 | | 8 | Y25 | 13.5 | R8-300 | 35 | | | |
| P301 | CFA | 700 | 38 000 | 50 920 | 0.580 | | 13.5 | | 8 | Y25 | 13.5 | R8-300 | 35 | | | |
| P302 | CFA | 700 | 38 000 | 50 920 | 0.580 | | 13.5 | | 8 | Y25 | 13.5 | R8-300 | 35 | | | |



DRENNAN MAUD (PTY) LTD
GEOTECHNICAL ENGINEERS AND ENGINEERING GEOLOGISTS

T: +27 31 201 8992

Reg. No. 2014/038872/07

Project No: WIMS 044044 / 31319 Project Name: New Psych. Ward, PS Hospl.
 Client: DOH c/o DOPW Contractor: _____
 Contract No: _____ Foreman: _____
 Weather conditions: _____ Signature: _____
 Date: _____

PILING RECORD - CONTIGUOUS PILED WALL

| PILE | | | LEVELS | | | | | | REINFORCEMENT | | | | CONCRETE | | | | NOTES |
|-----------|------|--------|-----------|---------|----------|------------------------|-----------------|----------------|---------------|-----|-----------------|--------|----------------|----------------------|--------------------------|---------|-------|
| Name / No | Type | Ø (mm) | Pile Base | Cut-off | Trim (m) | Groundwater (bel. EGL) | Pile Length (m) | Soil Sample No | No bars | Ø | Cage length (m) | Links | Strength (Mpa) | Batch No / Date Cast | Volume (m ³) | Cube No | |
| P303 | CFA | 700 | 38 000 | 50 920 | 0.580 | | 13.5 | | 8 | Y25 | 13.5 | R8-300 | 35 | | | | |
| P304 | CFA | 700 | 38 000 | 50 920 | 0.580 | | 13.5 | | 8 | Y25 | 13.5 | R8-300 | 35 | | | | |
| P305 | CFA | 700 | 38 000 | 50 920 | 0.580 | | 13.5 | | 8 | Y25 | 13.5 | R8-300 | 35 | | | | |
| P306 | CFA | 700 | 38 000 | 50 920 | 0.580 | | 13.5 | | 8 | Y25 | 13.5 | R8-300 | 35 | | | | |
| P307 | CFA | 700 | 38 000 | 50 920 | 0.580 | | 13.5 | | 8 | Y25 | 13.5 | R8-300 | 35 | | | | |
| P308 | CFA | 700 | 38 000 | 50 920 | 0.580 | | 13.5 | | 8 | Y25 | 13.5 | R8-300 | 35 | | | | |
| P309 | CFA | 700 | 38 000 | 50 920 | 0.580 | | 13.5 | | 8 | Y25 | 13.5 | R8-300 | 35 | | | | |
| P310 | CFA | 700 | 38 000 | 50 920 | 0.580 | | 13.5 | | 8 | Y25 | 13.5 | R8-300 | 35 | | | | |
| P311 | CFA | 700 | 38 000 | 50 920 | 0.580 | | 13.5 | | 8 | Y25 | 13.5 | R8-300 | 35 | | | | |
| P312 | CFA | 700 | 38 000 | 50 920 | 0.580 | | 13.5 | | 8 | Y25 | 13.5 | R8-300 | 35 | | | | |
| P313 | CFA | 700 | 38 000 | 50 920 | 0.580 | | 13.5 | | 8 | Y25 | 13.5 | R8-300 | 35 | | | | |
| P408 | CFA | 600 | 37 000 | 50 920 | 0.580 | | 14.5 | | 7 | Y20 | 14.5 | R8-240 | 35 | | | | |
| P400 | CFA | 600 | 37 000 | 50 920 | 0.580 | | 14.5 | | 7 | Y20 | 14.5 | R8-240 | 35 | | | | |
| P401 | CFA | 600 | 37 000 | 50 920 | 0.580 | | 14.5 | | 7 | Y20 | 14.5 | R8-240 | 35 | | | | |
| P402 | CFA | 600 | 37 000 | 50 920 | 0.580 | | 14.5 | | 7 | Y20 | 14.5 | R8-240 | 35 | | | | |
| P403 | CFA | 600 | 37 000 | 50 920 | 0.580 | | 14.5 | | 7 | Y20 | 14.5 | R8-240 | 35 | | | | |
| P404 | CFA | 600 | 37 000 | 50 920 | 0.580 | | 14.5 | | 7 | Y20 | 14.5 | R8-240 | 35 | | | | |
| P405 | CFA | 600 | 37 000 | 50 920 | 0.580 | | 14.5 | | 7 | Y20 | 14.5 | R8-240 | 35 | | | | |
| P406 | CFA | 600 | 37 000 | 50 920 | 0.580 | | 14.5 | | 7 | Y20 | 14.5 | R8-240 | 35 | | | | |
| P407 | CFA | 600 | 37 000 | 50 920 | 0.580 | | 14.5 | | 7 | Y20 | 14.5 | R8-240 | 35 | | | | |
| P500 | CFA | 500 | 40 000 | 47 420 | 0.580 | | 8.0 | | 6 | Y20 | 8.0 | R8-240 | 35 | | | | |
| P501 | CFA | 500 | 40 000 | 47 420 | 0.580 | | 8.0 | | 6 | Y20 | 8.0 | R8-240 | 35 | | | | |
| P502 | CFA | 500 | 40 000 | 47 420 | 0.580 | | 8.0 | | 6 | Y20 | 8.0 | R8-240 | 35 | | | | |
| P503 | CFA | 500 | 40 000 | 47 420 | 0.580 | | 8.0 | | 6 | Y20 | 8.0 | R8-240 | 35 | | | | |
| P504 | CFA | 500 | 40 000 | 47 420 | 0.580 | | 8.0 | | 6 | Y20 | 8.0 | R8-240 | 35 | | | | |
| P505 | CFA | 500 | 40 000 | 47 420 | 0.580 | | 8.0 | | 6 | Y20 | 8.0 | R8-240 | 35 | | | | |
| P506 | CFA | 500 | 40 000 | 47 420 | 0.580 | | 8.0 | | 6 | Y20 | 8.0 | R8-240 | 35 | | | | |
| P507 | CFA | 500 | 40 000 | 47 420 | 0.580 | | 8.0 | | 6 | Y20 | 8.0 | R8-240 | 35 | | | | |
| P508 | CFA | 500 | 40 000 | 47 420 | 0.580 | | 8.0 | | 6 | Y20 | 8.0 | R8-240 | 35 | | | | |
| P509 | CFA | 500 | 40 000 | 47 420 | 0.580 | | 8.0 | | 6 | Y20 | 8.0 | R8-240 | 35 | | | | |
| P510 | CFA | 500 | 40 000 | 47 420 | 0.580 | | 8.0 | | 6 | Y20 | 8.0 | R8-240 | 35 | | | | |
| P511 | CFA | 500 | 40 000 | 47 420 | 0.580 | | 8.0 | | 6 | Y20 | 8.0 | R8-240 | 35 | | | | |
| P512 | CFA | 500 | 40 000 | 47 420 | 0.580 | | 8.0 | | 6 | Y20 | 8.0 | R8-240 | 35 | | | | |
| P513 | CFA | 500 | 40 000 | 47 420 | 0.580 | | 8.0 | | 6 | Y20 | 8.0 | R8-240 | 35 | | | | |
| P514 | CFA | 500 | 40 000 | 47 420 | 0.580 | | 8.0 | | 6 | Y20 | 8.0 | R8-240 | 35 | | | | |
| P515 | CFA | 500 | 40 000 | 47 420 | 0.580 | | 8.0 | | 6 | Y20 | 8.0 | R8-240 | 35 | | | | |
| P516 | CFA | 500 | 40 000 | 47 420 | 0.580 | | 8.0 | | 6 | Y20 | 8.0 | R8-240 | 35 | | | | |
| P517 | CFA | 500 | 40 000 | 47 420 | 0.580 | | 8.0 | | 6 | Y20 | 8.0 | R8-240 | 35 | | | | |
| P518 | CFA | 500 | 40 000 | 47 420 | 0.580 | | 8.0 | | 6 | Y20 | 8.0 | R8-240 | 35 | | | | |
| P519 | CFA | 500 | 40 000 | 47 420 | 0.580 | | 8.0 | | 6 | Y20 | 8.0 | R8-240 | 35 | | | | |
| P520 | CFA | 500 | 40 000 | 47 420 | 0.580 | | 8.0 | | 6 | Y20 | 8.0 | R8-240 | 35 | | | | |
| P521 | CFA | 500 | 40 000 | 47 420 | 0.580 | | 8.0 | | 6 | Y20 | 8.0 | R8-240 | 35 | | | | |
| P522 | CFA | 500 | 40 000 | 47 420 | 0.580 | | 8.0 | | 6 | Y20 | 8.0 | R8-240 | 35 | | | | |
| P523 | CFA | 500 | 40 000 | 47 420 | 0.580 | | 8.0 | | 6 | Y20 | 8.0 | R8-240 | 35 | | | | |
| P524 | CFA | 500 | 40 000 | 47 420 | 0.580 | | 8.0 | | 6 | Y20 | 8.0 | R8-240 | 35 | | | | |
| P525 | CFA | 500 | 40 000 | 47 420 | 0.580 | | 8.0 | | 6 | Y20 | 8.0 | R8-240 | 35 | | | | |
| P526 | CFA | 500 | 40 000 | 47 420 | 0.580 | | 8.0 | | 6 | Y20 | 8.0 | R8-240 | 35 | | | | |
| P527 | CFA | 500 | 40 000 | 47 420 | 0.580 | | 8.0 | | 6 | Y20 | 8.0 | R8-240 | 35 | | | | |



DRENNAN MAUD (PTY) LTD
GEOTECHNICAL ENGINEERS AND ENGINEERING GEOLOGISTS

T: +27 31 201 8992

Reg. No. 2014/038872/07

| | | | |
|----------------------------|---------------------|----------------------|----------------------------|
| Project No: | WIMS 044044 / 31319 | Project Name: | New Psych. Ward, PS Hospl. |
| Client: | DOH c/o DOPW | Contractor: | _____ |
| Contract No: | _____ | Foreman: | _____ |
| Weather conditions: | _____ | Signature: | _____ |
| | | Date: | _____ |

PILING RECORD - CONTIGUOUS PILED WALL

| PILE | | | LEVELS | | | | | | REINFORCEMENT | | | | CONCRETE | | | | NOTES |
|-----------|------|--------|-----------|---------|----------|------------------------|-----------------|----------------|---------------|-----|-----------------|--------|----------------|----------------------|--------------------------|---------|-------|
| Name / No | Type | Ø (mm) | Pile Base | Cut-off | Trim (m) | Groundwater (bel. EGL) | Pile Length (m) | Soil Sample No | No bars | Ø | Cage length (m) | Links | Strength (Mpa) | Batch No / Date Cast | Volume (m ³) | Cube No | |
| P528 | CFA | 500 | 40 000 | 47 420 | 0.580 | | 8.0 | | 6 | Y20 | 8.0 | R8-240 | 35 | | | | |
| P529 | CFA | 500 | 40 000 | 47 420 | 0.580 | | 8.0 | | 6 | Y20 | 8.0 | R8-240 | 35 | | | | |
| P530 | CFA | 500 | 40 000 | 47 420 | 0.580 | | 8.0 | | 6 | Y20 | 8.0 | R8-240 | 35 | | | | |
| P531 | CFA | 500 | 40 000 | 47 420 | 0.580 | | 8.0 | | 6 | Y20 | 8.0 | R8-240 | 35 | | | | |
| P532 | CFA | 500 | 40 000 | 47 420 | 0.580 | | 8.0 | | 6 | Y20 | 8.0 | R8-240 | 35 | | | | |



DRENNAN MAUD (PTY) LTD
GEOTECHNICAL ENGINEERS AND ENGINEERING GEOLOGISTS

T: +27 31 201 8992

Reg. No. 2014/038872/07

Project No: WIMS 044044 / 31319 Project Name: New Psych. Ward, PS Hospl.
 Client: DOH c/o DOPW Contractor: _____
 Contract No: _____ Foreman: _____
 Weather conditions: _____ Signature: _____
 Date: _____

PILING RECORD - FOUNDATION PILES

| PILE | | | LEVELS | | | | | REINFORCEMENT | | | | CONCRETE | | | | NOTES |
|-----------|------|--------|---------|----------|------------------------|-----------------|----------------|---------------|-----|-----------------|--------|----------------|----------------------|--------------------------|---------|---|
| Name / No | Type | Ø (mm) | Cut-off | Trim (m) | Groundwater (bel. EGL) | Pile Length (m) | Soil Sample No | No bars | Ø | Cage length (m) | Links | Strength (Mpa) | Batch No / Date Cast | Volume (m ³) | Cube No | |
| B5p1 | CFA | 450 | 45 125 | 0.575 | | 13.5 | | 7 | Y16 | 10.5 | R8-190 | 25 | | | | All information regarding obstructions and any other information regarding interruptions and delays in the sequence of work. Any circumstance that would effect load-carrying capacity. |
| B5p2 | CFA | 450 | 45 125 | 0.575 | | 13.5 | | 7 | Y16 | 10.5 | R8-190 | 25 | | | | |
| B5p3 | CFA | 450 | 45 125 | 0.575 | | 13.5 | | 7 | Y16 | 10.5 | R8-190 | 25 | | | | |
| B6p1 | CFA | 450 | 45 125 | 0.575 | | 13.5 | | 7 | Y16 | 10.5 | R8-190 | 25 | | | | |
| B6p2 | CFA | 450 | 45 125 | 0.575 | | 13.5 | | 7 | Y16 | 10.5 | R8-190 | 25 | | | | |
| B6p3 | CFA | 450 | 45 125 | 0.575 | | 13.5 | | 7 | Y16 | 10.5 | R8-190 | 25 | | | | |
| B8p1 | CFA | 450 | 45 125 | 0.575 | | 13.5 | | 7 | Y16 | 10.5 | R8-190 | 25 | | | | |
| B8p2 | CFA | 450 | 45 125 | 0.575 | | 13.5 | | 7 | Y16 | 10.5 | R8-190 | 25 | | | | |
| B8p3 | CFA | 450 | 45 125 | 0.575 | | 13.5 | | 7 | Y16 | 10.5 | R8-190 | 25 | | | | |
| B9p1 | CFA | 450 | 45 125 | 0.575 | | 13.5 | | 7 | Y16 | 10.5 | R8-190 | 25 | | | | |
| B9p2 | CFA | 450 | 45 125 | 0.575 | | 13.5 | | 7 | Y16 | 10.5 | R8-190 | 25 | | | | |
| B9p3 | CFA | 450 | 45 125 | 0.575 | | 13.5 | | 7 | Y16 | 10.5 | R8-190 | 25 | | | | |
| C2p1 | CFA | 450 | 45 125 | 0.575 | | 13.5 | | 7 | Y16 | 10.5 | R8-190 | 25 | | | | |
| C2p2 | CFA | 450 | 45 125 | 0.575 | | 13.5 | | 7 | Y16 | 10.5 | R8-190 | 25 | | | | |
| C2p3 | CFA | 450 | 45 125 | 0.575 | | 13.5 | | 7 | Y16 | 10.5 | R8-190 | 25 | | | | |
| C3p1 | CFA | 450 | 45 125 | 0.575 | | 13.5 | | 7 | Y16 | 10.5 | R8-190 | 25 | | | | |
| C3p2 | CFA | 450 | 45 125 | 0.575 | | 13.5 | | 7 | Y16 | 10.5 | R8-190 | 25 | | | | |
| C3p3 | CFA | 450 | 45 125 | 0.575 | | 13.5 | | 7 | Y16 | 10.5 | R8-190 | 25 | | | | |
| C9p1 | CFA | 450 | 45 125 | 0.575 | | 13.5 | | 7 | Y16 | 10.5 | R8-190 | 25 | | | | |
| C9p2 | CFA | 450 | 45 125 | 0.575 | | 13.5 | | 7 | Y16 | 10.5 | R8-190 | 25 | | | | |
| C9p3 | CFA | 450 | 45 125 | 0.575 | | 13.5 | | 7 | Y16 | 10.5 | R8-190 | 25 | | | | |
| D9p1 | CFA | 450 | 45 125 | 0.575 | | 13.5 | | 7 | Y16 | 10.5 | R8-190 | 25 | | | | |
| D9p2 | CFA | 450 | 45 125 | 0.575 | | 13.5 | | 7 | Y16 | 10.5 | R8-190 | 25 | | | | |
| D9p3 | CFA | 450 | 45 125 | 0.575 | | 13.5 | | 7 | Y16 | 10.5 | R8-190 | 25 | | | | |
| E2p1 | CFA | 450 | 45 125 | 0.575 | | 13.5 | | 7 | Y16 | 10.5 | R8-190 | 25 | | | | |
| E2p2 | CFA | 450 | 45 125 | 0.575 | | 13.5 | | 7 | Y16 | 10.5 | R8-190 | 25 | | | | |
| E2p3 | CFA | 450 | 45 125 | 0.575 | | 13.5 | | 7 | Y16 | 10.5 | R8-190 | 25 | | | | |
| E9p1 | CFA | 450 | 45 125 | 0.575 | | 13.5 | | 7 | Y16 | 10.5 | R8-190 | 25 | | | | |
| E9p2 | CFA | 450 | 45 125 | 0.575 | | 13.5 | | 7 | Y16 | 10.5 | R8-190 | 25 | | | | |
| E9p3 | CFA | 450 | 45 125 | 0.575 | | 13.5 | | 7 | Y16 | 10.5 | R8-190 | 25 | | | | |
| F2p1 | CFA | 450 | 45 125 | 0.575 | | 13.5 | | 7 | Y16 | 10.5 | R8-190 | 25 | | | | |
| F2p2 | CFA | 450 | 45 125 | 0.575 | | 13.5 | | 7 | Y16 | 10.5 | R8-190 | 25 | | | | |
| F2p3 | CFA | 450 | 45 125 | 0.575 | | 13.5 | | 7 | Y16 | 10.5 | R8-190 | 25 | | | | |
| F10ap1 | CFA | 450 | 45 125 | 0.575 | | 13.5 | | 7 | Y16 | 10.5 | R8-190 | 25 | | | | |
| F10ap2 | CFA | 450 | 45 125 | 0.575 | | 13.5 | | 7 | Y16 | 10.5 | R8-190 | 25 | | | | |
| F10ap3 | CFA | 450 | 45 125 | 0.575 | | 13.5 | | 7 | Y16 | 10.5 | R8-190 | 25 | | | | |
| H5ap1 | CFA | 450 | 44 275 | 0.575 | | 13.5 | | 7 | Y16 | 10.5 | R8-190 | 25 | | | | |
| H5ap2 | CFA | 450 | 44 275 | 0.575 | | 13.5 | | 7 | Y16 | 10.5 | R8-190 | 25 | | | | |
| H5ap3 | CFA | 450 | 44 275 | 0.575 | | 13.5 | | 7 | Y16 | 10.5 | R8-190 | 25 | | | | |
| M13p1 | CFA | 450 | 45 125 | 0.575 | | 13.5 | | 7 | Y16 | 10.5 | R8-190 | 25 | | | | |
| M13p2 | CFA | 450 | 45 125 | 0.575 | | 13.5 | | 7 | Y16 | 10.5 | R8-190 | 25 | | | | |
| M13p3 | CFA | 450 | 45 125 | 0.575 | | 13.5 | | 7 | Y16 | 10.5 | R8-190 | 25 | | | | |
| B3p1 | CFA | 450 | 45 075 | 0.625 | | 13.5 | | 7 | Y16 | 10.5 | R8-190 | 25 | | | | |
| B3p2 | CFA | 450 | 45 075 | 0.625 | | 13.5 | | 7 | Y16 | 10.5 | R8-190 | 25 | | | | |
| B3p3 | CFA | 450 | 45 075 | 0.625 | | 13.5 | | 7 | Y16 | 10.5 | R8-190 | 25 | | | | |
| B3p4 | CFA | 450 | 45 075 | 0.625 | | 13.5 | | 7 | Y16 | 10.5 | R8-190 | 25 | | | | |
| C5p1 | CFA | 450 | 45 075 | 0.625 | | 13.5 | | 7 | Y16 | 10.5 | R8-190 | 25 | | | | |



DRENNAN MAUD (PTY) LTD
GEOTECHNICAL ENGINEERS AND ENGINEERING GEOLOGISTS

T: +27 31 201 8992

Reg. No. 2014/038872/07

| | | | |
|---------------------|---------------------|---------------|----------------------------|
| Project No: | WIMS 044044 / 31319 | Project Name: | New Psych. Ward, PS Hospl. |
| Client: | DOH c/o DOPW | Contractor: | _____ |
| Contract No: | _____ | Foreman: | _____ |
| Weather conditions: | _____ | Signature: | _____ |
| | | Date: | _____ |

PILING RECORD - FOUNDATION PILES

| PILE | | | LEVELS | | | | | REINFORCEMENT | | | | CONCRETE | | | | NOTES |
|-----------|------|--------|---------|----------|------------------------|-----------------|----------------|---------------|-----|-----------------|--------|----------------|----------------------|--------------------------|---------|-------|
| Name / No | Type | Ø (mm) | Cut-off | Trim (m) | Groundwater (bel. EGL) | Pile Length (m) | Soil Sample No | No bars | Ø | Cage length (m) | Links | Strength (Mpa) | Batch No / Date Cast | Volume (m ³) | Cube No | |
| C5p2 | CFA | 450 | 45 075 | 0.625 | | 13.5 | | 7 | Y16 | 10.5 | R8-190 | 25 | | | | |
| C5p3 | CFA | 450 | 45 075 | 0.625 | | 13.5 | | 7 | Y16 | 10.5 | R8-190 | 25 | | | | |
| C5p4 | CFA | 450 | 45 075 | 0.625 | | 13.5 | | 7 | Y16 | 10.5 | R8-190 | 25 | | | | |
| C6p1 | CFA | 450 | 45 075 | 0.625 | | 13.5 | | 7 | Y16 | 10.5 | R8-190 | 25 | | | | |
| C6p2 | CFA | 450 | 45 075 | 0.625 | | 13.5 | | 7 | Y16 | 10.5 | R8-190 | 25 | | | | |
| C6p3 | CFA | 450 | 45 075 | 0.625 | | 13.5 | | 7 | Y16 | 10.5 | R8-190 | 25 | | | | |
| C6p4 | CFA | 450 | 45 075 | 0.625 | | 13.5 | | 7 | Y16 | 10.5 | R8-190 | 25 | | | | |
| C8p1 | CFA | 450 | 45 075 | 0.625 | | 13.5 | | 7 | Y16 | 10.5 | R8-190 | 25 | | | | |
| C8p2 | CFA | 450 | 45 075 | 0.625 | | 13.5 | | 7 | Y16 | 10.5 | R8-190 | 25 | | | | |
| C8p3 | CFA | 450 | 45 075 | 0.625 | | 13.5 | | 7 | Y16 | 10.5 | R8-190 | 25 | | | | |
| C8p4 | CFA | 450 | 45 075 | 0.625 | | 13.5 | | 7 | Y16 | 10.5 | R8-190 | 25 | | | | |
| D3p1 | CFA | 450 | 45 075 | 0.625 | | 13.5 | | 7 | Y16 | 10.5 | R8-190 | 25 | | | | |
| D3p2 | CFA | 450 | 45 075 | 0.625 | | 13.5 | | 7 | Y16 | 10.5 | R8-190 | 25 | | | | |
| D3p3 | CFA | 450 | 45 075 | 0.625 | | 13.5 | | 7 | Y16 | 10.5 | R8-190 | 25 | | | | |
| D3p4 | CFA | 450 | 45 075 | 0.625 | | 13.5 | | 7 | Y16 | 10.5 | R8-190 | 25 | | | | |
| D5p1 | CFA | 450 | 45 075 | 0.625 | | 13.5 | | 7 | Y16 | 10.5 | R8-190 | 25 | | | | |
| D5p2 | CFA | 450 | 45 075 | 0.625 | | 13.5 | | 7 | Y16 | 10.5 | R8-190 | 25 | | | | |
| D5p3 | CFA | 450 | 45 075 | 0.625 | | 13.5 | | 7 | Y16 | 10.5 | R8-190 | 25 | | | | |
| D5p4 | CFA | 450 | 45 075 | 0.625 | | 13.5 | | 7 | Y16 | 10.5 | R8-190 | 25 | | | | |
| D6p1 | CFA | 450 | 45 075 | 0.625 | | 13.5 | | 7 | Y16 | 10.5 | R8-190 | 25 | | | | |
| D6p2 | CFA | 450 | 45 075 | 0.625 | | 13.5 | | 7 | Y16 | 10.5 | R8-190 | 25 | | | | |
| D6p3 | CFA | 450 | 45 075 | 0.625 | | 13.5 | | 7 | Y16 | 10.5 | R8-190 | 25 | | | | |
| D6p4 | CFA | 450 | 45 075 | 0.625 | | 13.5 | | 7 | Y16 | 10.5 | R8-190 | 25 | | | | |
| D8p1 | CFA | 450 | 45 075 | 0.625 | | 13.5 | | 7 | Y16 | 10.5 | R8-190 | 25 | | | | |
| D8p2 | CFA | 450 | 45 075 | 0.625 | | 13.5 | | 7 | Y16 | 10.5 | R8-190 | 25 | | | | |
| D8p3 | CFA | 450 | 45 075 | 0.625 | | 13.5 | | 7 | Y16 | 10.5 | R8-190 | 25 | | | | |
| D8p4 | CFA | 450 | 45 075 | 0.625 | | 13.5 | | 7 | Y16 | 10.5 | R8-190 | 25 | | | | |
| E3p1 | CFA | 450 | 45 075 | 0.625 | | 13.5 | | 7 | Y16 | 10.5 | R8-190 | 25 | | | | |
| E3p2 | CFA | 450 | 45 075 | 0.625 | | 13.5 | | 7 | Y16 | 10.5 | R8-190 | 25 | | | | |
| E3p3 | CFA | 450 | 45 075 | 0.625 | | 13.5 | | 7 | Y16 | 10.5 | R8-190 | 25 | | | | |
| E3p4 | CFA | 450 | 45 075 | 0.625 | | 13.5 | | 7 | Y16 | 10.5 | R8-190 | 25 | | | | |
| E5p1 | CFA | 450 | 45 075 | 0.625 | | 13.5 | | 7 | Y16 | 10.5 | R8-190 | 25 | | | | |
| E5p2 | CFA | 450 | 45 075 | 0.625 | | 13.5 | | 7 | Y16 | 10.5 | R8-190 | 25 | | | | |
| E5p3 | CFA | 450 | 45 075 | 0.625 | | 13.5 | | 7 | Y16 | 10.5 | R8-190 | 25 | | | | |
| E5p4 | CFA | 450 | 45 075 | 0.625 | | 13.5 | | 7 | Y16 | 10.5 | R8-190 | 25 | | | | |
| E6p1 | CFA | 450 | 45 075 | 0.625 | | 13.5 | | 7 | Y16 | 10.5 | R8-190 | 25 | | | | |
| E6p2 | CFA | 450 | 45 075 | 0.625 | | 13.5 | | 7 | Y16 | 10.5 | R8-190 | 25 | | | | |
| E6p3 | CFA | 450 | 45 075 | 0.625 | | 13.5 | | 7 | Y16 | 10.5 | R8-190 | 25 | | | | |
| E6p4 | CFA | 450 | 45 075 | 0.625 | | 13.5 | | 7 | Y16 | 10.5 | R8-190 | 25 | | | | |
| E8p1 | CFA | 450 | 45 075 | 0.625 | | 13.5 | | 7 | Y16 | 10.5 | R8-190 | 25 | | | | |
| E8p2 | CFA | 450 | 45 075 | 0.625 | | 13.5 | | 7 | Y16 | 10.5 | R8-190 | 25 | | | | |
| E8p3 | CFA | 450 | 45 075 | 0.625 | | 13.5 | | 7 | Y16 | 10.5 | R8-190 | 25 | | | | |
| E8p4 | CFA | 450 | 45 075 | 0.625 | | 13.5 | | 7 | Y16 | 10.5 | R8-190 | 25 | | | | |
| F3p1 | CFA | 450 | 45 075 | 0.625 | | 13.5 | | 7 | Y16 | 10.5 | R8-190 | 25 | | | | |
| F3p2 | CFA | 450 | 45 075 | 0.625 | | 13.5 | | 7 | Y16 | 10.5 | R8-190 | 25 | | | | |
| F3p3 | CFA | 450 | 45 075 | 0.625 | | 13.5 | | 7 | Y16 | 10.5 | R8-190 | 25 | | | | |
| F3p4 | CFA | 450 | 45 075 | 0.625 | | 13.5 | | 7 | Y16 | 10.5 | R8-190 | 25 | | | | |



DRENNAN MAUD (PTY) LTD
GEOTECHNICAL ENGINEERS AND ENGINEERING GEOLOGISTS

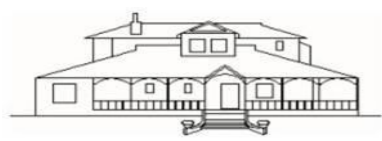
T: +27 31 201 8992

Reg. No. 2014/038872/07

| | | | |
|---------------------|---------------------|---------------|----------------------------|
| Project No: | WIMS 044044 / 31319 | Project Name: | New Psych. Ward, PS Hospl. |
| Client: | DOH c/o DOPW | Contractor: | _____ |
| Contract No: | _____ | Foreman: | _____ |
| Weather conditions: | _____ | Signature: | _____ |
| | | Date: | _____ |

PILING RECORD - FOUNDATION PILES

| PILE | | | LEVELS | | | | | REINFORCEMENT | | | | CONCRETE | | | | NOTES |
|-----------|------|--------|---------|----------|------------------------|-----------------|----------------|---------------|-----|-----------------|--------|----------------|----------------------|--------------------------|---------|-------|
| Name / No | Type | Ø (mm) | Cut-off | Trim (m) | Groundwater (bel. EGL) | Pile Length (m) | Soil Sample No | No bars | Ø | Cage length (m) | Links | Strength (Mpa) | Batch No / Date Cast | Volume (m ³) | Cube No | |
| F5p1 | CFA | 450 | 45 075 | 0.625 | | 13.5 | | 7 | Y16 | 10.5 | R8-190 | 25 | | | | |
| F5p2 | CFA | 450 | 45 075 | 0.625 | | 13.5 | | 7 | Y16 | 10.5 | R8-190 | 25 | | | | |
| F5p3 | CFA | 450 | 45 075 | 0.625 | | 13.5 | | 7 | Y16 | 10.5 | R8-190 | 25 | | | | |
| F5p4 | CFA | 450 | 45 075 | 0.625 | | 13.5 | | 7 | Y16 | 10.5 | R8-190 | 25 | | | | |
| F6p1 | CFA | 450 | 45 075 | 0.625 | | 13.5 | | 7 | Y16 | 10.5 | R8-190 | 25 | | | | |
| F6p2 | CFA | 450 | 45 075 | 0.625 | | 13.5 | | 7 | Y16 | 10.5 | R8-190 | 25 | | | | |
| F6p3 | CFA | 450 | 45 075 | 0.625 | | 13.5 | | 7 | Y16 | 10.5 | R8-190 | 25 | | | | |
| F6p4 | CFA | 450 | 45 075 | 0.625 | | 13.5 | | 7 | Y16 | 10.5 | R8-190 | 25 | | | | |
| F8p1 | CFA | 450 | 45 075 | 0.625 | | 13.5 | | 7 | Y16 | 10.5 | R8-190 | 25 | | | | |
| F8p2 | CFA | 450 | 45 075 | 0.625 | | 13.5 | | 7 | Y16 | 10.5 | R8-190 | 25 | | | | |
| F8p3 | CFA | 450 | 45 075 | 0.625 | | 13.5 | | 7 | Y16 | 10.5 | R8-190 | 25 | | | | |
| F8p4 | CFA | 450 | 45 075 | 0.625 | | 13.5 | | 7 | Y16 | 10.5 | R8-190 | 25 | | | | |
| F9p1 | CFA | 450 | 45 075 | 0.625 | | 13.5 | | 7 | Y16 | 10.5 | R8-190 | 25 | | | | |
| F9p2 | CFA | 450 | 45 075 | 0.625 | | 13.5 | | 7 | Y16 | 10.5 | R8-190 | 25 | | | | |
| F9p3 | CFA | 450 | 45 075 | 0.625 | | 13.5 | | 7 | Y16 | 10.5 | R8-190 | 25 | | | | |
| F9p4 | CFA | 450 | 45 075 | 0.625 | | 13.5 | | 7 | Y16 | 10.5 | R8-190 | 25 | | | | |
| G6p1 | CFA | 450 | 45 075 | 0.625 | | 13.5 | | 7 | Y16 | 10.5 | R8-190 | 25 | | | | |
| G6p2 | CFA | 450 | 45 075 | 0.625 | | 13.5 | | 7 | Y16 | 10.5 | R8-190 | 25 | | | | |
| G6p3 | CFA | 450 | 45 075 | 0.625 | | 13.5 | | 7 | Y16 | 10.5 | R8-190 | 25 | | | | |
| G6p4 | CFA | 450 | 45 075 | 0.625 | | 13.5 | | 7 | Y16 | 10.5 | R8-190 | 25 | | | | |
| G8p1 | CFA | 450 | 45 075 | 0.625 | | 13.5 | | 7 | Y16 | 10.5 | R8-190 | 25 | | | | |
| G8p2 | CFA | 450 | 45 075 | 0.625 | | 13.5 | | 7 | Y16 | 10.5 | R8-190 | 25 | | | | |
| G8p3 | CFA | 450 | 45 075 | 0.625 | | 13.5 | | 7 | Y16 | 10.5 | R8-190 | 25 | | | | |
| G8p4 | CFA | 450 | 45 075 | 0.625 | | 13.5 | | 7 | Y16 | 10.5 | R8-190 | 25 | | | | |
| G9p1 | CFA | 450 | 45 075 | 0.625 | | 13.5 | | 7 | Y16 | 10.5 | R8-190 | 25 | | | | |
| G9p2 | CFA | 450 | 45 075 | 0.625 | | 13.5 | | 7 | Y16 | 10.5 | R8-190 | 25 | | | | |
| G9p3 | CFA | 450 | 45 075 | 0.625 | | 13.5 | | 7 | Y16 | 10.5 | R8-190 | 25 | | | | |
| G9p4 | CFA | 450 | 45 075 | 0.625 | | 13.5 | | 7 | Y16 | 10.5 | R8-190 | 25 | | | | |
| H6p1 | CFA | 450 | 44 225 | 0.625 | | 13.5 | | 7 | Y16 | 10.5 | R8-190 | 25 | | | | |
| H6p2 | CFA | 450 | 44 225 | 0.625 | | 13.5 | | 7 | Y16 | 10.5 | R8-190 | 25 | | | | |
| H6p3 | CFA | 450 | 44 225 | 0.625 | | 13.5 | | 7 | Y16 | 10.5 | R8-190 | 25 | | | | |
| H6p4 | CFA | 450 | 44 225 | 0.625 | | 13.5 | | 7 | Y16 | 10.5 | R8-190 | 25 | | | | |
| H8p1 | CFA | 450 | 44 225 | 0.625 | | 13.5 | | 7 | Y16 | 10.5 | R8-190 | 25 | | | | |
| H8p2 | CFA | 450 | 44 225 | 0.625 | | 13.5 | | 7 | Y16 | 10.5 | R8-190 | 25 | | | | |
| H8p3 | CFA | 450 | 44 225 | 0.625 | | 13.5 | | 7 | Y16 | 10.5 | R8-190 | 25 | | | | |
| H8p4 | CFA | 450 | 44 225 | 0.625 | | 13.5 | | 7 | Y16 | 10.5 | R8-190 | 25 | | | | |
| H9p1 | CFA | 450 | 45 075 | 0.625 | | 13.5 | | 7 | Y16 | 10.5 | R8-190 | 25 | | | | |
| H9p2 | CFA | 450 | 45 075 | 0.625 | | 13.5 | | 7 | Y16 | 10.5 | R8-190 | 25 | | | | |
| H9p3 | CFA | 450 | 45 075 | 0.625 | | 13.5 | | 7 | Y16 | 10.5 | R8-190 | 25 | | | | |
| H9p4 | CFA | 450 | 45 075 | 0.625 | | 13.5 | | 7 | Y16 | 10.5 | R8-190 | 25 | | | | |
| M12p1 | CFA | 450 | 44 225 | 0.625 | | 13.5 | | 7 | Y16 | 10.5 | R8-190 | 25 | | | | |
| M12p2 | CFA | 450 | 44 225 | 0.625 | | 13.5 | | 7 | Y16 | 10.5 | R8-190 | 25 | | | | |
| M12p3 | CFA | 450 | 44 225 | 0.625 | | 13.5 | | 7 | Y16 | 10.5 | R8-190 | 25 | | | | |
| M12p4 | CFA | 450 | 44 225 | 0.625 | | 13.5 | | 7 | Y16 | 10.5 | R8-190 | 25 | | | | |
| N12p1 | CFA | 450 | 45 075 | 0.625 | | 13.5 | | 7 | Y16 | 10.5 | R8-190 | 25 | | | | |
| N12p2 | CFA | 450 | 45 075 | 0.625 | | 13.5 | | 7 | Y16 | 10.5 | R8-190 | 25 | | | | |
| N12p3 | CFA | 450 | 45 075 | 0.625 | | 13.5 | | 7 | Y16 | 10.5 | R8-190 | 25 | | | | |
| N12p4 | CFA | 450 | 45 075 | 0.625 | | 13.5 | | 7 | Y16 | 10.5 | R8-190 | 25 | | | | |



DRENNAN MAUD (PTY) LTD
GEOTECHNICAL ENGINEERS AND ENGINEERING GEOLOGISTS

T: +27 31 201 8992

Reg. No. 2014/038872/07

Project No: WIMS 044044 / 31319 Project Name: New Psych. Ward, PS Hospl.
 Client: DOH c/o DOPW Contractor: _____
 Contract No: _____ Foreman: _____
 Weather conditions: _____ Signature: _____
 Date: _____

PILING RECORD - FOUNDATION PILES

| PILE | | | LEVELS | | | | | REINFORCEMENT | | | | CONCRETE | | | | NOTES |
|-----------|------|--------|---------|----------|------------------------|-----------------|----------------|---------------|-----|-----------------|--------|----------------|----------------------|--------------------------|---------|-------|
| Name / No | Type | Ø (mm) | Cut-off | Trim (m) | Groundwater (bel. EGL) | Pile Length (m) | Soil Sample No | No bars | Ø | Cage length (m) | Links | Strength (Mpa) | Batch No / Date Cast | Volume (m ³) | Cube No | |
| O12p1 | CFA | 450 | 45 075 | 0.625 | | 13.5 | | 7 | Y16 | 10.5 | R8-190 | 25 | | | | |
| O12p2 | CFA | 450 | 45 075 | 0.625 | | 13.5 | | 7 | Y16 | 10.5 | R8-190 | 25 | | | | |
| O12p3 | CFA | 450 | 45 075 | 0.625 | | 13.5 | | 7 | Y16 | 10.5 | R8-190 | 25 | | | | |
| O12p4 | CFA | 450 | 45 075 | 0.625 | | 13.5 | | 7 | Y16 | 10.5 | R8-190 | 25 | | | | |
| P13p1 | CFA | 450 | 45 075 | 0.625 | | 13.5 | | 7 | Y16 | 10.5 | R8-190 | 25 | | | | |
| P13p2 | CFA | 450 | 45 075 | 0.625 | | 13.5 | | 7 | Y16 | 10.5 | R8-190 | 25 | | | | |
| P13p3 | CFA | 450 | 45 075 | 0.625 | | 13.5 | | 7 | Y16 | 10.5 | R8-190 | 25 | | | | |
| P13p4 | CFA | 450 | 45 075 | 0.625 | | 13.5 | | 7 | Y16 | 10.5 | R8-190 | 25 | | | | |
| A10p | CFA | 350 | 45 275 | 0.425 | | 11.0 | | 5 | Y16 | 9.0 | R8-190 | 25 | | | | |
| M15p | CFA | 350 | 45 275 | 0.425 | | 11.0 | | 5 | Y16 | 9.0 | R8-190 | 25 | | | | |
| N15p | CFA | 350 | 45 275 | 0.425 | | 11.0 | | 5 | Y16 | 9.0 | R8-190 | 25 | | | | |
| O15p | CFA | 350 | 45 275 | 0.425 | | 11.0 | | 5 | Y16 | 9.0 | R8-190 | 25 | | | | |
| Q15p | CFA | 350 | 45 275 | 0.425 | | 11.0 | | 5 | Y16 | 9.0 | R8-190 | 25 | | | | |
| A6p1 | CFA | 350 | 45 275 | 0.425 | | 11.0 | | 5 | Y16 | 9.0 | R8-190 | 25 | | | | |
| A6p2 | CFA | 350 | 45 275 | 0.425 | | 11.0 | | 5 | Y16 | 9.0 | R8-190 | 25 | | | | |
| A7p1 | CFA | 350 | 45 275 | 0.425 | | 11.0 | | 5 | Y16 | 9.0 | R8-190 | 25 | | | | |
| A7p2 | CFA | 350 | 45 275 | 0.425 | | 11.0 | | 5 | Y16 | 9.0 | R8-190 | 25 | | | | |
| A8p1 | CFA | 350 | 45 275 | 0.425 | | 11.0 | | 5 | Y16 | 9.0 | R8-190 | 25 | | | | |
| A8p2 | CFA | 350 | 45 275 | 0.425 | | 11.0 | | 5 | Y16 | 9.0 | R8-190 | 25 | | | | |
| A10ap1 | CFA | 350 | 45 275 | 0.425 | | 11.0 | | 5 | Y16 | 9.0 | R8-190 | 25 | | | | |
| A10ap2 | CFA | 350 | 45 275 | 0.425 | | 11.0 | | 5 | Y16 | 9.0 | R8-190 | 25 | | | | |
| B10ap1 | CFA | 350 | 45 275 | 0.425 | | 11.0 | | 5 | Y16 | 9.0 | R8-190 | 25 | | | | |
| B10ap2 | CFA | 350 | 45 275 | 0.425 | | 11.0 | | 5 | Y16 | 9.0 | R8-190 | 25 | | | | |
| B10bp1 | CFA | 350 | 45 275 | 0.425 | | 11.0 | | 5 | Y16 | 9.0 | R8-190 | 25 | | | | |
| B10bp2 | CFA | 350 | 45 275 | 0.425 | | 11.0 | | 5 | Y16 | 9.0 | R8-190 | 25 | | | | |
| C10ap1 | CFA | 350 | 45 275 | 0.425 | | 11.0 | | 5 | Y16 | 9.0 | R8-190 | 25 | | | | |
| C10ap2 | CFA | 350 | 45 275 | 0.425 | | 11.0 | | 5 | Y16 | 9.0 | R8-190 | 25 | | | | |
| D10bp1 | CFA | 350 | 45 275 | 0.425 | | 11.0 | | 5 | Y16 | 9.0 | R8-190 | 25 | | | | |
| D10bp2 | CFA | 350 | 45 275 | 0.425 | | 11.0 | | 5 | Y16 | 9.0 | R8-190 | 25 | | | | |
| E10ap1 | CFA | 350 | 45 275 | 0.425 | | 11.0 | | 5 | Y16 | 9.0 | R8-190 | 25 | | | | |
| E10ap2 | CFA | 350 | 45 275 | 0.425 | | 11.0 | | 5 | Y16 | 9.0 | R8-190 | 25 | | | | |
| L13p1 | CFA | 350 | 44 425 | 0.425 | | 11.0 | | 5 | Y16 | 9.0 | R8-190 | 25 | | | | |
| L13p2 | CFA | 350 | 44 425 | 0.425 | | 11.0 | | 5 | Y16 | 9.0 | R8-190 | 25 | | | | |
| L14p1 | CFA | 350 | 44 425 | 0.425 | | 11.0 | | 5 | Y16 | 9.0 | R8-190 | 25 | | | | |
| L14p2 | CFA | 350 | 44 425 | 0.425 | | 11.0 | | 5 | Y16 | 9.0 | R8-190 | 25 | | | | |
| P12p1 | CFA | 350 | 45 275 | 0.425 | | 11.0 | | 5 | Y16 | 9.0 | R8-190 | 25 | | | | |
| P12p2 | CFA | 350 | 45 275 | 0.425 | | 11.0 | | 5 | Y16 | 9.0 | R8-190 | 25 | | | | |
| A9p1 | CFA | 350 | 45 275 | 0.425 | | 10.0 | | 7 | Y12 | 9.0 | R8-140 | 25 | | | | |
| A9p2 | CFA | 350 | 45 275 | 0.425 | | 10.0 | | 7 | Y12 | 9.0 | R8-140 | 25 | | | | |
| A9p3 | CFA | 350 | 45 275 | 0.425 | | 10.0 | | 7 | Y12 | 9.0 | R8-140 | 25 | | | | |
| E10bp1 | CFA | 350 | 45 275 | 0.425 | | 10.0 | | 7 | Y12 | 9.0 | R8-140 | 25 | | | | |
| E10bp2 | CFA | 350 | 45 275 | 0.425 | | 10.0 | | 7 | Y12 | 9.0 | R8-140 | 25 | | | | |
| E10bp3 | CFA | 350 | 45 275 | 0.425 | | 10.0 | | 7 | Y12 | 9.0 | R8-140 | 25 | | | | |
| L12p1 | CFA | 350 | 44 425 | 0.425 | | 10.0 | | 7 | Y12 | 9.0 | R8-140 | 25 | | | | |
| L12p2 | CFA | 350 | 44 425 | 0.425 | | 10.0 | | 7 | Y12 | 9.0 | R8-140 | 25 | | | | |
| L12p3 | CFA | 350 | 44 425 | 0.425 | | 10.0 | | 7 | Y12 | 9.0 | R8-140 | 25 | | | | |
| B2p1 | CFA | 350 | 45 275 | 0.425 | | 10.0 | | 7 | Y12 | 9.0 | R8-140 | 25 | | | | |
| B2p2 | CFA | 350 | 45 275 | 0.425 | | 10.0 | | 7 | Y12 | 9.0 | R8-140 | 25 | | | | |



DRENNAN MAUD (PTY) LTD
GEOTECHNICAL ENGINEERS AND ENGINEERING GEOLOGISTS

T: +27 31 201 8992

Reg. No. 2014/038872/07

Project No: WIMS 044044 / 31319 Project Name: New Psych. Ward, PS Hospl.
 Client: DOH c/o DOPW Contractor: _____
 Contract No: _____ Foreman: _____
 Weather conditions: _____ Signature: _____
 Date: _____

PILING RECORD - FOUNDATION PILES

| PILE | | | LEVELS | | | | | REINFORCEMENT | | | | CONCRETE | | | | NOTES |
|-----------|------|--------|---------|----------|------------------------|-----------------|----------------|---------------|-----|-----------------|--------|----------------|----------------------|--------------------------|---------|-------|
| Name / No | Type | Ø (mm) | Cut-off | Trim (m) | Groundwater (bel. EGL) | Pile Length (m) | Soil Sample No | No bars | Ø | Cage length (m) | Links | Strength (Mpa) | Batch No / Date Cast | Volume (m ³) | Cube No | |
| B2p3 | CFA | 350 | 45 275 | 0.425 | | 10.0 | | 7 | Y12 | 9.0 | R8-140 | 25 | | | | |
| B2p4 | CFA | 350 | 45 275 | 0.425 | | 10.0 | | 7 | Y12 | 9.0 | R8-140 | 25 | | | | |
| D2p1 | CFA | 350 | 45 275 | 0.425 | | 10.0 | | 7 | Y12 | 9.0 | R8-140 | 25 | | | | |
| D2p2 | CFA | 350 | 45 275 | 0.425 | | 10.0 | | 7 | Y12 | 9.0 | R8-140 | 25 | | | | |
| D2p3 | CFA | 350 | 45 275 | 0.425 | | 10.0 | | 7 | Y12 | 9.0 | R8-140 | 25 | | | | |
| D2p4 | CFA | 350 | 45 275 | 0.425 | | 10.0 | | 7 | Y12 | 9.0 | R8-140 | 25 | | | | |
| N13p1 | CFA | 350 | 45 275 | 0.425 | | 10.0 | | 7 | Y12 | 9.0 | R8-140 | 25 | | | | |
| N13p2 | CFA | 350 | 45 275 | 0.425 | | 10.0 | | 7 | Y12 | 9.0 | R8-140 | 25 | | | | |
| N13p3 | CFA | 350 | 45 275 | 0.425 | | 10.0 | | 7 | Y12 | 9.0 | R8-140 | 25 | | | | |
| N13p4 | CFA | 350 | 45 275 | 0.425 | | 10.0 | | 7 | Y12 | 9.0 | R8-140 | 25 | | | | |
| O13p1 | CFA | 350 | 45 275 | 0.425 | | 10.0 | | 7 | Y12 | 9.0 | R8-140 | 25 | | | | |
| O13p2 | CFA | 350 | 45 275 | 0.425 | | 10.0 | | 7 | Y12 | 9.0 | R8-140 | 25 | | | | |
| O13p3 | CFA | 350 | 45 275 | 0.425 | | 10.0 | | 7 | Y12 | 9.0 | R8-140 | 25 | | | | |
| O13p4 | CFA | 350 | 45 275 | 0.425 | | 10.0 | | 7 | Y12 | 9.0 | R8-140 | 25 | | | | |
| LSp1 | CFA | 450 | 43 925 | 0.925 | | 14.0 | | 7 | Y16 | 10.5 | R8-190 | 25 | | | | |
| LSp2 | CFA | 450 | 43 925 | 0.925 | | 14.0 | | 7 | Y16 | 10.5 | R8-190 | 25 | | | | |
| LSp3 | CFA | 450 | 43 925 | 0.925 | | 14.0 | | 7 | Y16 | 10.5 | R8-190 | 25 | | | | |
| LSp4 | CFA | 450 | 43 925 | 0.925 | | 14.0 | | 7 | Y16 | 10.5 | R8-190 | 25 | | | | |
| LSp5 | CFA | 450 | 43 925 | 0.925 | | 14.0 | | 7 | Y16 | 10.5 | R8-190 | 25 | | | | |
| LSp6 | CFA | 450 | 43 925 | 0.925 | | 14.0 | | 7 | Y16 | 10.5 | R8-190 | 25 | | | | |
| LSp7 | CFA | 450 | 43 925 | 0.925 | | 14.0 | | 7 | Y16 | 10.5 | R8-190 | 25 | | | | |
| LSp8 | CFA | 450 | 43 925 | 0.925 | | 14.0 | | 7 | Y16 | 10.5 | R8-190 | 25 | | | | |
| SCp1 | CFA | 350 | 45 025 | 0.675 | | 10.5 | | 7 | Y12 | 9.00 | R8-140 | 25 | | | | |
| SCp2 | CFA | 350 | 45 025 | 0.675 | | 10.5 | | 7 | Y12 | 9.00 | R8-140 | 25 | | | | |
| SCp3 | CFA | 350 | 45 025 | 0.675 | | 10.5 | | 7 | Y12 | 9.00 | R8-140 | 25 | | | | |
| SCp4 | CFA | 350 | 45 025 | 0.675 | | 10.5 | | 7 | Y12 | 9.00 | R8-140 | 25 | | | | |
| SCp5 | CFA | 350 | 45 025 | 0.675 | | 10.5 | | 7 | Y12 | 9.00 | R8-140 | 25 | | | | |
| SCp6 | CFA | 350 | 45 025 | 0.675 | | 10.5 | | 7 | Y12 | 9.00 | R8-140 | 25 | | | | |
| SCp7 | CFA | 350 | 45 025 | 0.675 | | 10.5 | | 7 | Y12 | 9.00 | R8-140 | 25 | | | | |
| SCp8 | CFA | 350 | 45 025 | 0.675 | | 10.5 | | 7 | Y12 | 9.00 | R8-140 | 25 | | | | |
| RW6p1 | CFA | 350 | 45 475 | 0.225 | | 11.0 | | 5 | Y16 | 9.00 | R8-190 | 25 | | | | |
| RW6p2 | CFA | 350 | 45 475 | 0.225 | | 10.0 | | 7 | Y12 | 9.00 | R8-140 | 25 | | | | |
| RW6p3 | CFA | 350 | 45 475 | 0.225 | | 10.0 | | 7 | Y12 | 9.00 | R8-140 | 25 | | | | |
| RW6p4 | CFA | 350 | 45 475 | 0.225 | | 10.0 | | 7 | Y12 | 9.00 | R8-140 | 25 | | | | |
| RW7p1 | CFA | 350 | 44 625 | 0.225 | | 10.0 | | 7 | Y12 | 9.00 | R8-140 | 25 | | | | |
| RW7p2 | CFA | 350 | 44 625 | 0.225 | | 10.0 | | 7 | Y12 | 9.00 | R8-140 | 25 | | | | |
| RW7p3 | CFA | 350 | 44 625 | 0.225 | | 10.0 | | 7 | Y12 | 9.00 | R8-140 | 25 | | | | |
| RW8p1 | CFA | 350 | 45 475 | 0.225 | | 10.0 | | 7 | Y12 | 9.00 | R8-140 | 25 | | | | |
| RW8p2 | CFA | 350 | 45 475 | 0.225 | | 10.0 | | 7 | Y12 | 9.00 | R8-140 | 25 | | | | |
| RW8p3 | CFA | 350 | 45 475 | 0.225 | | 10.0 | | 7 | Y12 | 9.00 | R8-140 | 25 | | | | |
| RW8p4 | CFA | 350 | 45 475 | 0.225 | | 10.0 | | 7 | Y12 | 9.00 | R8-140 | 25 | | | | |
| RW8p5 | CFA | 350 | 45 475 | 0.225 | | 10.0 | | 7 | Y12 | 9.00 | R8-140 | 25 | | | | |
| RW8p6 | CFA | 350 | 45 475 | 0.225 | | 11.0 | | 5 | Y16 | 9.00 | R8-190 | 25 | | | | |
| RW8p7 | CFA | 350 | 45 475 | 0.225 | | 10.0 | | 7 | Y12 | 9.00 | R8-140 | 25 | | | | |
| RW8p8 | CFA | 350 | 45 475 | 0.225 | | 10.0 | | 7 | Y12 | 9.00 | R8-140 | 25 | | | | |
| RW8p9 | CFA | 350 | 45 475 | 0.225 | | 11.0 | | 5 | Y16 | 9.00 | R8-190 | 25 | | | | |
| RW8p10 | CFA | 350 | 45 475 | 0.225 | | 10.0 | | 7 | Y12 | 9.00 | R8-140 | 25 | | | | |
| RW8p11 | CFA | 350 | 45 475 | 0.225 | | 10.0 | | 7 | Y12 | 9.00 | R8-140 | 25 | | | | |



DRENNAN MAUD (PTY) LTD
GEOTECHNICAL ENGINEERS AND ENGINEERING GEOLOGISTS

T: +27 31 201 8992

Reg. No. 2014/038872/07

| | | | |
|----------------------------|---------------------|----------------------|----------------------------|
| Project No: | WIMS 044044 / 31319 | Project Name: | New Psych. Ward, PS Hospl. |
| Client: | DOH c/o DOPW | Contractor: | _____ |
| Contract No: | _____ | Foreman: | _____ |
| Weather conditions: | _____ | Signature: | _____ |
| | | Date: | _____ |

PILING RECORD - FOUNDATION PILES

| PILE | | | LEVELS | | | | | REINFORCEMENT | | | | CONCRETE | | | | NOTES |
|-----------|------|--------|---------|----------|------------------------|-----------------|----------------|---------------|-----|-----------------|--------|----------------|----------------------|--------------------------|---------|-------|
| Name / No | Type | Ø (mm) | Cut-off | Trim (m) | Groundwater (bel. EGL) | Pile Length (m) | Soil Sample No | No bars | Ø | Cage length (m) | Links | Strength (Mpa) | Batch No / Date Cast | Volume (m ³) | Cube No | |
| RW8p12 | CFA | 350 | 45 475 | 0.225 | | 10.0 | | 7 | Y12 | 9.00 | R8-140 | 25 | | | | |
| RW8p13 | CFA | 350 | 45 475 | 0.225 | | 10.0 | | 7 | Y12 | 9.00 | R8-140 | 25 | | | | |
| RW8p14 | CFA | 350 | 45 475 | 0.225 | | 10.0 | | 7 | Y12 | 9.00 | R8-140 | 25 | | | | |



DRENNAN MAUD (PTY) LTD
GEOTECHNICAL ENGINEERS AND ENGINEERING GEOLOGISTS

T: +27 31 201 8992

Reg. No. 2014/038872/07

Project No: 31319
 Client: eThekweni Municipality
 Contract No: WIMS 044044
 Weather conditions: _____

Project Name: New Psych Ward, PS Hospital
 Contractor: _____
 Foreman: _____
 Signature: _____
 Date: _____

SOIL NAIL QUALITY CONTROL SHEET

| REFERENCE | | | | | INSTALLATION | | | | | GROUT | | | | | LOAD TEST | | | NOTES | |
|-----------|----------|------------|-------------------|------------------------------|----------------|----------------------------------|-----------|----------------------|-------------|--------------|------------------------|--------------------|----------------|---------|-------------------------|-----------|--------|-------|--|
| Name / No | Bar Type | Bar Ø (mm) | Design Length (m) | Installation Inclination (°) | Date Installed | Material Encountered (soil/rock) | Sample No | Hole/Drill Depth (m) | Hole Ø (mm) | Date Grouted | Volume of Grout (ℓ/m³) | Flow Test time (s) | Strength (MPa) | Cube No | Cement Manufacture Date | Test Date | Result | | Approved by Engineer |
| A100 | DYWI SDA | 32-250 | 15.0 | 15 | | | | | 130 | | | | 35 | | | | | | All information regarding obstructions and any other information regarding interruptions and delays in the sequence of work. Any circumstance that would effect load-carrying capacity e.g. groundwater, hole collapse, etc. |
| A101 | DYWI SDA | 32-250 | 15.0 | 15 | | | | | 130 | | | | 35 | | | | | | |
| A102 | DYWI SDA | 32-250 | 15.0 | 15 | | | | | 130 | | | | 35 | | | | | | |
| A103 | DYWI SDA | 32-250 | 15.0 | 15 | | | | | 130 | | | | 35 | | | | | | |
| A104 | DYWI SDA | 32-250 | 15.0 | 15 | | | | | 130 | | | | 35 | | | | | | |
| A105 | DYWI SDA | 32-250 | 15.0 | 15 | | | | | 130 | | | | 35 | | | | | | |
| A106 | DYWI SDA | 32-250 | 15.0 | 15 | | | | | 130 | | | | 35 | | | | | | |
| A107 | DYWI SDA | 32-250 | 15.0 | 15 | | | | | 130 | | | | 35 | | | | | | |
| A108 | DYWI SDA | 32-250 | 15.0 | 15 | | | | | 130 | | | | 35 | | | | | | |
| A109 | DYWI SDA | 32-250 | 15.0 | 15 | | | | | 130 | | | | 35 | | | | | | |
| A110 | DYWI SDA | 32-250 | 15.0 | 15 | | | | | 130 | | | | 35 | | | | | | |
| A111 | DYWI SDA | 32-250 | 15.0 | 15 | | | | | 130 | | | | 35 | | | | | | |
| A112 | DYWI SDA | 32-250 | 15.0 | 15 | | | | | 130 | | | | 35 | | | | | | |
| A113 | DYWI SDA | 32-250 | 15.0 | 15 | | | | | 130 | | | | 35 | | | | | | |
| A114 | DYWI SDA | 32-250 | 15.0 | 15 | | | | | 130 | | | | 35 | | | | | | |
| A115 | DYWI SDA | 32-250 | 15.0 | 15 | | | | | 130 | | | | 35 | | | | | | |
| A116 | DYWI SDA | 32-250 | 15.0 | 15 | | | | | 130 | | | | 35 | | | | | | |
| A117 | DYWI SDA | 32-250 | 15.0 | 15 | | | | | 130 | | | | 35 | | | | | | |
| A118 | DYWI SDA | 32-250 | 15.0 | 15 | | | | | 130 | | | | 35 | | | | | | |
| A119 | DYWI SDA | 32-250 | 15.0 | 15 | | | | | 130 | | | | 35 | | | | | | |
| A120 | DYWI SDA | 32-250 | 15.0 | 15 | | | | | 130 | | | | 35 | | | | | | |
| A121 | DYWI SDA | 32-250 | 15.0 | 15 | | | | | 130 | | | | 35 | | | | | | |
| A122 | DYWI SDA | 32-250 | 15.0 | 15 | | | | | 130 | | | | 35 | | | | | | |
| A123 | DYWI SDA | 32-250 | 15.0 | 15 | | | | | 130 | | | | 35 | | | | | | |
| A124 | DYWI SDA | 32-250 | 15.0 | 15 | | | | | 130 | | | | 35 | | | | | | |
| A125 | DYWI SDA | 32-250 | 15.0 | 15 | | | | | 130 | | | | 35 | | | | | | |
| A126 | DYWI SDA | 32-250 | 15.0 | 15 | | | | | 130 | | | | 35 | | | | | | |
| A127 | DYWI SDA | 32-250 | 15.0 | 15 | | | | | 130 | | | | 35 | | | | | | |
| A128 | DYWI SDA | 32-250 | 15.0 | 15 | | | | | 130 | | | | 35 | | | | | | |
| A129 | DYWI SDA | 32-250 | 15.0 | 15 | | | | | 130 | | | | 35 | | | | | | |
| A200 | DYWI SDA | 32-210 | 12.0 | 25 | | | | | 130 | | | | 35 | | | | | | |
| A201 | DYWI SDA | 32-210 | 12.0 | 25 | | | | | 130 | | | | 35 | | | | | | |
| A202 | DYWI SDA | 32-210 | 12.0 | 25 | | | | | 130 | | | | 35 | | | | | | |
| A203 | DYWI SDA | 32-210 | 12.0 | 25 | | | | | 130 | | | | 35 | | | | | | |



DRENNAN MAUD (PTY) LTD
GEOTECHNICAL ENGINEERS AND ENGINEERING GEOLOGISTS

Reg. No. 2014/038872/07

T: +27 31 201 8992

PULL-OUT TEST RECORD SHEET

Project №: 31319 **Project Name:** New Psychiatric Ward, Port Shepstone Hospital
Client: DoH c/o DoPW **Contract №:** WIMS 044044
Contractor: _____
Foreman: _____ **Witnessed by:** _____
Signature: _____ **Signature:** _____
Date: _____ **Date:** _____

Soil Nail Name / № _____ **A1--**

Working Load WL (kN) = _____ **120**

| Step | Loading (%) | Applied Load (kN) | Applied Pressure (Mpa) | Hold Time (min) | Bar Elongation (mm) | Jack Deflection into Ground (mm) |
|------|-------------|-------------------|------------------------|-----------------|---------------------|----------------------------------|
| 1 | 25 | 30 | | 5 | | |
| 2 | 50 | 60 | | 5 | | |
| 3 | 75 | 90 | | 5 | | |
| 4 | 100 | 120 | | 5 | | |
| 5 | 125 | 150 | | 5 | | |

The system shall be deemed to have failed if rapid or movements in excess of 30mm occur.

Lock-off Load 90%WL (kN) = _____ **108**



DRENNAN MAUD (PTY) LTD
GEOTECHNICAL ENGINEERS AND ENGINEERING GEOLOGISTS

Reg. No. 2014/038872/07

T: +27 31 201 8992

PULL-OUT TEST RECORD SHEET

Project №: 31319 **Project Name:** New Psychiatric Ward, Port Shepstone Hospital
Client: DoH c/o DoPW **Contract №:** WIMS 044044
Contractor: _____
Foreman: _____ **Witnessed by:** _____
Signature: _____ **Signature:** _____
Date: _____ **Date:** _____

Soil Nail Name / № _____ **A2--**

Working Load WL (kN) = _____ **88**

| Step | Loading (%) | Applied Load (kN) | Applied Pressure (Mpa) | Hold Time (min) | Bar Elongation (mm) | Jack Deflection into Ground (mm) |
|------|-------------|-------------------|------------------------|-----------------|---------------------|----------------------------------|
| 1 | 25 | 22 | | 5 | | |
| 2 | 50 | 44 | | 5 | | |
| 3 | 75 | 66 | | 5 | | |
| 4 | 100 | 88 | | 5 | | |
| 5 | 125 | 110 | | 5 | | |

The system shall be deemed to have failed if rapid or movements in excess of 30mm occur.

Lock-off Load 90%WL (kN) = _____ **79**