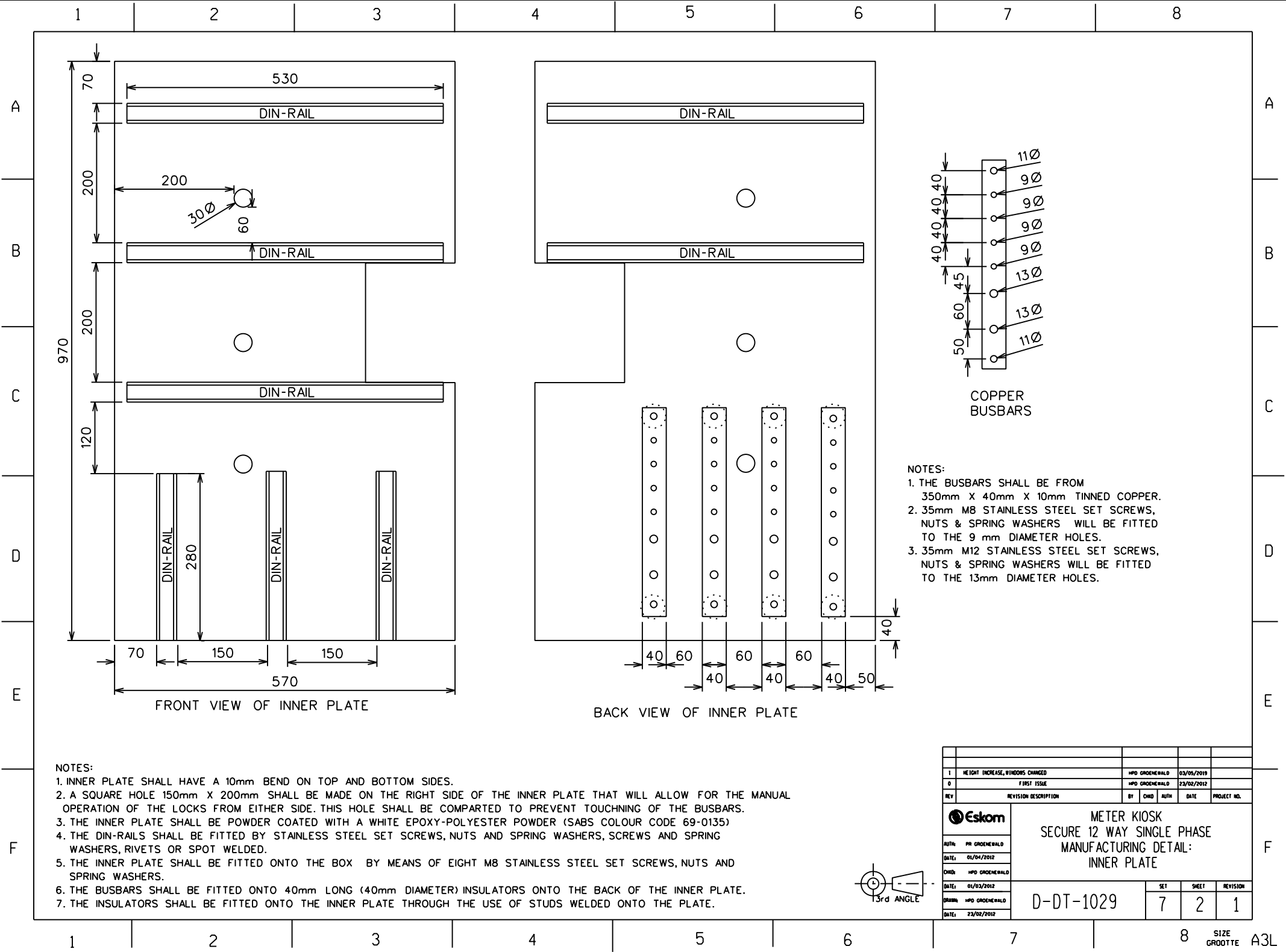


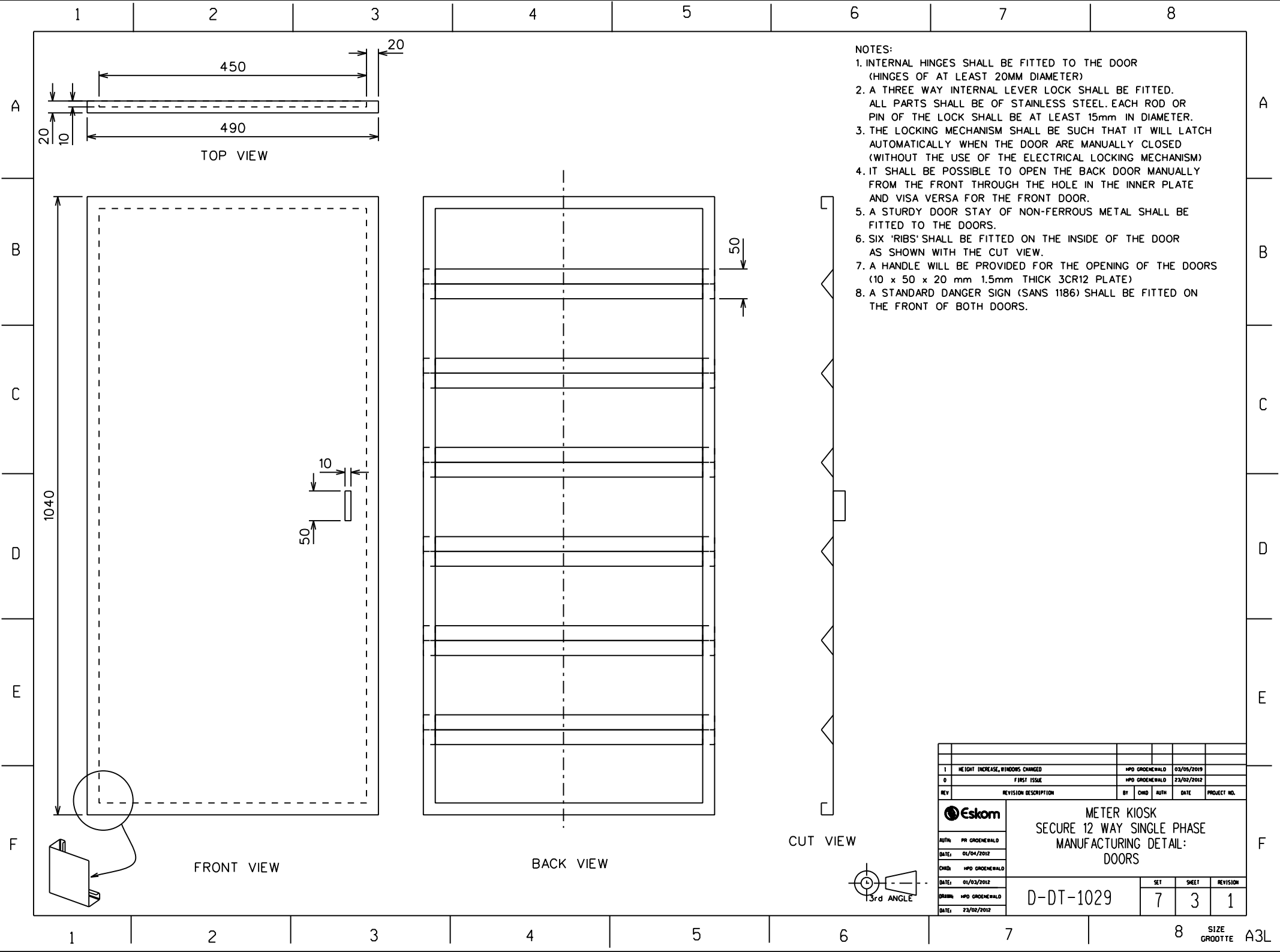
NOTES:

1. THE ENTIRE KIOSK SHALL BE MANUFACTURED FROM 3mm 3CR12.
2. THE DOOR SURROUNDS SHALL INCORPORATE A SPLASH PROOF 15mm LIP AROUND THE ENTIRE PERIMETER.
3. THE DOORS SHALL BE MOUNTED FLUSH TO THE KIOSK DOOR SIL.
4. 50 x 800mm SUPPORTING BRACKETS SHALL BE WELDED ONTO THE LEFT AND RIGHT SIDES OF THE DOOR SIL TO IMPROVE RIGIDITY. 50 x 200mm SUPPORTING BRACKETS SHALL BE WELDED ONTO THE TOP AND BOTTOM SIDES.
5. LIFTING LUGS SHALL BE PROVIDED AS INDICATED.
6. THE DOORS SHALL BE HINGED WITH THREE HINGES (BULLET OR SIMILAR) AND SHALL BE AT LEAST 20mm IN DIAMETER.
7. BOTH DOORS SHALL BE HINGED ON THE LEFT SIDE OF THE KIOSK (SAME SIDE)
8. THE EARTH STUDS SHALL BE M12 50mm STAINLESS STEEL SET SCREW, NUT AND SPRING WASHER AND THE SET SCREW SHALL BE WELDED ONTO THE BOTTOM OF THE KIOSK
9. THE INNER PLATE SHALL BE MOUNTED 50mm AWAY FROM THE TOP OF THE KIOSK.
10. THE BOTTOM OF THE KIOSK SHALL BE RESESSED BY 15mm INWARDS TO ALLOW FOR A SKIRT WHICH SHALL FIT OVER THE BASE TO CLOSE THE GAP BETWEEN KIOSK AND BASE.
11. 22mm DIAMETER HOLES SHALL BE FITTED TO BOTH SIDES OF THE KIOSK TO ALLOW FOR THE INSTALLATION OF EXTERNAL ANTENNAS WHEN REQUIRED. A BOXED COVER WITH OPENINGS ON THE SIDES SHALL BE WELDED ON THE INSIDE OVER THE HOLE TO PROTECT ENTRY TO THE KIOSK. A PLASTIC / RUBBER COVER SHALL ALSO BE INSTALLED TO THE HOLE.
12. THE KIOSK SHALL BE POWDER COATED WITH LIGHT NAVY GREY POLYESTER POWDER (SABS COLOUR CODE G35).

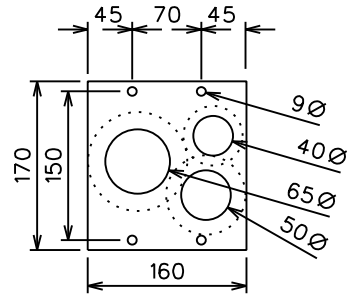
[illegible]



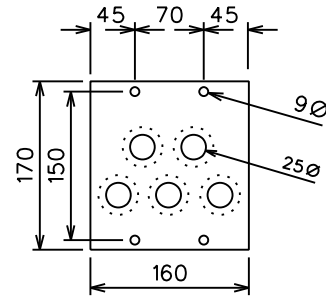
1	HEIGHT INCREASE, WINDOWS CHANGED	HPD GROENEHALD	03/05/2019		
0	FIRST ISSUE	HPD GROENEHALD	23/02/2012		
REV	REVISION DESCRIPTION	BY	CHKD	AUTH	DATE
					PROJECT NO.
Eskom					
AUTH:	PR GROENEHALD				
DATE:	01/04/2012				
CHKD:	HPD GROENEHALD				
DATE:	01/03/2012				
DRWN:	HPD GROENEHALD				
DATE:	23/02/2012				
		METER KIOSK SECURE 12 WAY SINGLE PHASE MANUFACTURING DETAIL: INNER PLATE			
D-DT-1029		SET	SHEET	REVISION	
		7	2	1	



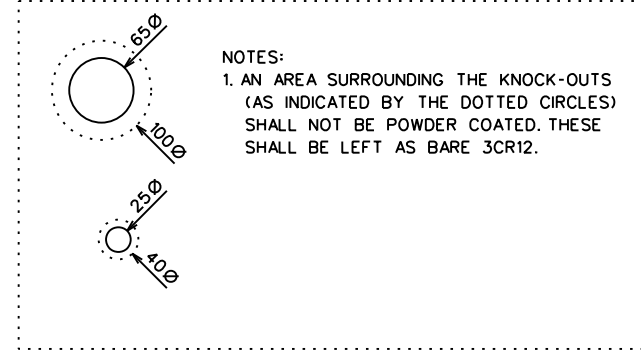
1	HEIGHT INCREASE, WINDOWS CHANGED	HPD GROENEHALD	03/09/2019		
0	FIRST ISSUE	HPD GROENEHALD	23/02/2012		
REV	REVISION DESCRIPTION	BY	CHKD	AUTH	DATE
					PROJECT NO.
Eskom					
AUTH:	PR GROENEHALD	METER KIOSK SECURE 12 WAY SINGLE PHASE MANUFACTURING DETAIL: DOORS			
DATE:	01/04/2012				
CHKD:	HPD GROENEHALD				
DATE:	01/03/2012				
DRWN:	HPD GROENEHALD	D-DT-1029			
DATE:	23/02/2012				
		SET	SHEET	REVISION	
		7	3	1	



POWER CABLE
GLAND PLATE (x3)



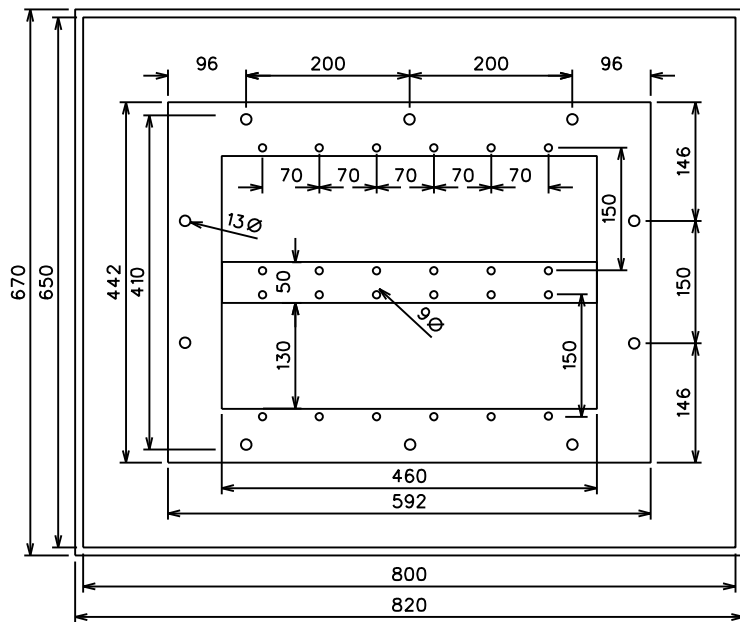
SERVICE CABLE
GLAND PLATE (x3)



NOTES:
1. AN AREA SURROUNDING THE KNOCK-OUTS
(AS INDICATED BY THE DOTTED CIRCLES)
SHALL NOT BE POWDER COATED. THESE
SHALL BE LEFT AS BARE 3CR12.

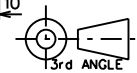
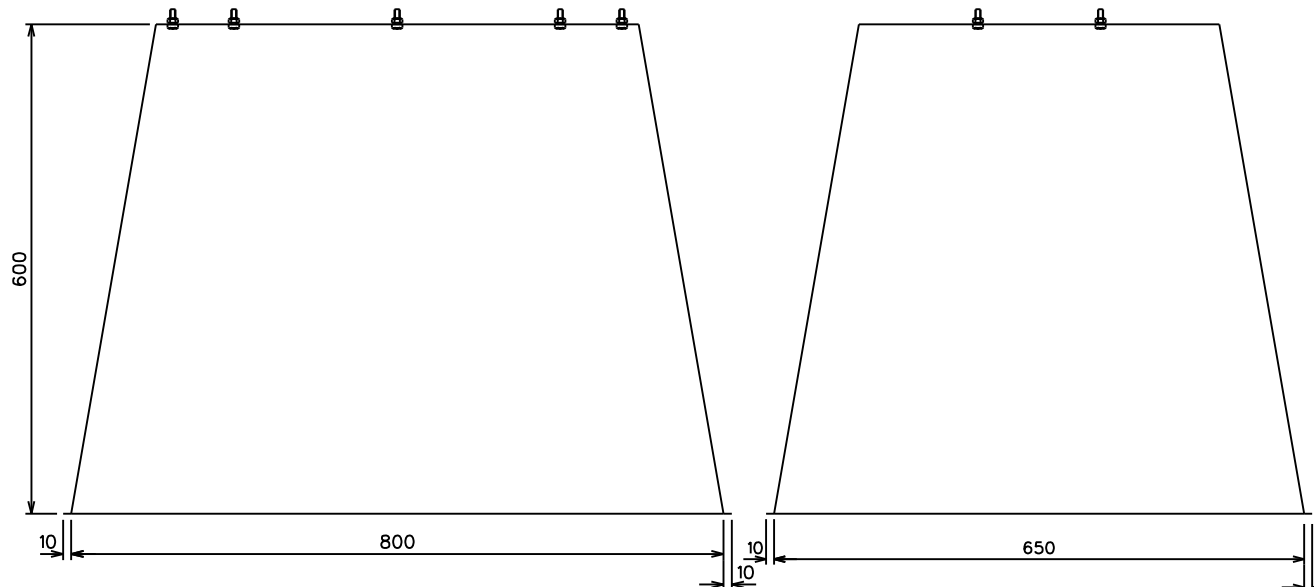
- NOTES:
1. THE GLAND PLATES SHALL BE MANUFACTURED FROM 2mm THICK 3CR12
 2. ALL OF THE HOLES SHALL BE FITTED WITH KNOCK-OUTS AND WILL ALLOW FOR EASY REMOVAL THAT WILL NOT DAMAGE THE KIOSK WHEN REMOVED.
 3. THE THREE POWER CABLE GLAND PLATES AND THREE SERVICE CABLE GLAND PLATES SHALL BE FITTED TO THE KIOSK BASE WITH M8 SET SCREWS, SPRING WASHERS AND NUTS


1	HEIGHT INCREASE, WINDOWS CHANGED	HPD GROENEHALD	03/05/2019		
0	FIRST ISSUE	HPD GROENEHALD	23/02/2012		
REV	REVISION DESCRIPTION	BY	CHKD	AUTH	DATE
				PROJECT NO.	
Eskom		METER KIOSK SECURE 12 WAY SINGLE PHASE MANUFACTURING DETAIL: GLAND PLATE			
AUTH:	PR GROENEHALD				
DATE:	01/04/2012				
CHKD:	HPD GROENEHALD				
DATE:	01/03/2012				
DRWN:	HPD GROENEHALD				
DATE:	23/02/2012				
D-DT-1029		SET	SHEET	REVISION	
		7	4	1	



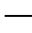
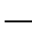
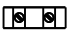

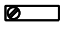



NOTES:

1. THE BASE SHALL BE SUPPLIED AS STANDARD WITH THE KIOSK.
2. THE BASE SHALL BE MANUFACTURED FROM 3mm 3CR12 AND POWDER COATED IN GREY.
3. THE BOTTOM SHALL HAVE A 10mm LIP ON ALL SIDES.
4. M12 STAINLESS STEEL SET SCREWS (20mm), NUTS AND SPRING WASHERS SHALL BE SUPPLIED FOR THE FITMENT OF THE KIOSK ONTO THE BASE.
13mm DIAMETER HOLES SHALL BE DRILLED OR PUNCHED IN THE BASE AND THE SET SCREWS SHALL THEN BE WELDED INSIDE THE BASE CENTERED OVER THE HOLES.
5. M8 STAINLESS STEEL SET SCREWS (20mm), NUTS AND SPRING WASHERS SHALL BE USED TO FIT THE GLAND PLATES ONTO THE BASE. 9mm DIAMETER HOLES SHALL BE DRILLED OR PUNCHED IN THE BASE AND THE SET SCREWS SHALL THEN BE WELDED INSIDE THE BASE CENTERED OVER THE HOLES.

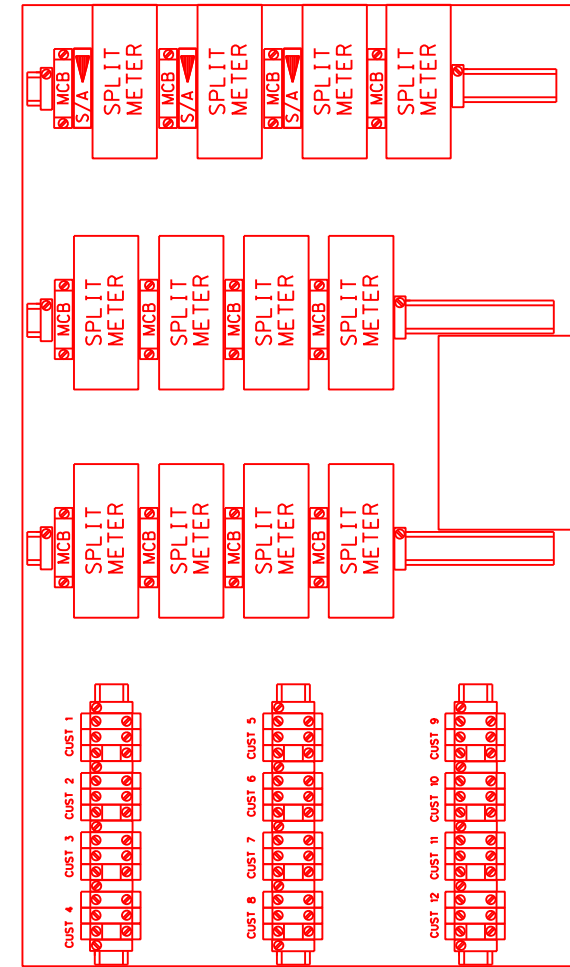


1	HEIGHT INCREASE, RIBBONS CHANGED	HPD	GRONHEWALD	03/05/2019		
0	FIRST ISSUE	HPD	GRONHEWALD	23/02/2012		
REV	REVISION DESCRIPTION	BY	CHKD	AUTH	DATE	PROJECT NO.
		<div>METER KIOSK SECURE 12 WAY SINGLE PHASE MANUFACTURING DETAIL: STANDARD BASE (TAPERED)</div>				
AUTH:	PH GRONHEWALD					
DATE:	04/04/2012					
CHKD:	HPD GRONHEWALD					
DATE:	01/03/2012	SET		SHEET		REVISION
DRSN:	HPD GRONHEWALD	7		5		1
DATE:	23/02/2012					

LEGEND	DESCRIPTION	20A SUPPLY POINTS	60A SUPPLY POINTS
	1 PHASE SPLIT PRE-PAYMENT METER	ESKOM APPROVED SPLIT PRE-PAYMENT METER 20A	ESKOM APPROVED SPLIT PRE-PAYMENT METER 60A
	CIRCUIT BREAKER HYDRAULIC MAGNETIC SINGLE PHASE	CBI: HY-MAG 20A TYPE QF1-18D or QF1-26D CURVE 1, DIN RAIL MOUNTED	CBI: HY-MAG 60A TYPE QF1-18D or QF1-26D CURVE 1, DIN RAIL MOUNTED
	WIRING: BUSBARS - MCB - METERS - TERMINALS	16mm SQUARE COLOUR CODED PVC INSULATED CABLE, RATED VOLTAGE 600/1000V, SABS 1507	
	WIRING: EARTH STUD TO TERMINALS (EARTH WIRING)	16mm SQUARE GREEN & YELLOW PVC INSULATED CABLE, RATED VOLTAGE 600/1000V, SABS 1507	
	TERMINAL 35mm	WEIDMULLER: TYPE WDU35N or KLEMSAN: TYPE AVK35 or ALSTOM ELMEX KUT35 PHOENIX CONTACT: TYPE UIK35 ABB: TYPE ZS35	
	BRIDGE BAR	WEIDMULLER WQV35/2 or KLEMSAN UK 35/2 or ALSTOM ELMEX CCLA 35K-2W PHOENIX CONTACT: TYPE FBI2-15 ABB: TYPE JB16-2	
	END STOP	WEIDMULLER EW35 or LEGRAND VIKING 3 39403 or ENTRELEC BAM or KLEMSAN KD3 or PHOENIX CONTACT: E/UK or CLIPFIX 35 ABB: TYPE BAZH1	
	SURGE ARRESTOR: I _{max} (8/20ms) 40kA or 65kA (4/20ms) 275V (SINGLE POLE DIN) SANS IEC 61643-1	CBI: TYPE QKL1-(13)D 275V 20/40kA (CBI BOM CODE QKLD0001) or SIMILAR	


NOTES:

1. THE WIRING BETWEEN BUSBARS TO MCB, MCCB TO METER AND METER TO TERMINALS SHALL BE 16mm SQUARE COLOUR CODED PVC INSULATED CABLES.
2. WIRING FROM THE BUSBARS ROUTED THROUGH THE HOLES IN THE INNER PLATE SHALL BE PROTECTED FROM SHAFING.
3. THE TOP SPLIT PREPAYMENT METERS SHALL BE SUPPLIED FROM THE RED PHASE BUSBAR, THE MIDDLE FROM THE WHITE PHASE BUSBAR AND THE BOTTOM FROM THE BLUE PHASE BUSBAR.
4. THE NEUTRAL CONDUCTOR WILL BE ROUTED FROM TO THE BUSBAR TO THE FIRST METER ON EACH BANK AND THEN PARALLELED TO THE OTHER METERS ON THAT BANK.
5. THE NEUTRAL CONDUCTOR WILL BE ROUTED TO THE FIRST NEUTRAL ON THE TERMINAL BANK AND THEN PARALLELED TO THE OTHER NEUTRAL TERMINALS.
6. THE GROUND TERMINALS WILL BE PARALLELED AND THEN CONNECTED TO THE EARTH STUD.
7. A 70mm SQUARE CABLE WILL ALSO BE INSTALLED FROM THE NEUTRAL BUSBAR TO THE EARTH STUD.
8. LABELS STATING CUSTOMER 1 TO 12 SHALL BE FITTED ONTO THE INNER PLATE



INNER PLATE LAYOUT

1	HEIGHT INCREASE, WINDOWS CHANGED	HPD GROENEHALD	03/04/2019		
0	FIRST ISSUE	HPD GROENEHALD	23/02/2012		
REV	REVISION DESCRIPTION	BY	CHD	AUTH	DATE
					PROJECT NO.

	METER KIOSK SECURE 12 WAY SINGLE PHASE MANUFACTURING DETAIL: OUTLAY & APPROVED EQUIPMENT			
AUTH: PR GROENEHALD				
DATE: 01/04/2012				
CHD: HPD GROENEHALD				
DATE: 01/03/2012				
DRWN: HPD GROENEHALD	D-DT-1029	SET	SHEET	REVISION
DATE: 23/02/2012		7	6	1

