

- NOTES:
1. The vent line of each pressure relief valve is safely routed from the valve outlet (near the ground) to the top of the building, where the line discharges directly to the atmosphere.
 2. The vent valves GA13-013, NH13-21 and GS13-039, are all dead man valves.
 3. Argon is only fed at the start-up of the plasma reactor. Thereafter, the system switches over to Nitrogen.
 4. The supplier to advise on pressure relief vave size during procurement based on nozzle area specified by NECSA.
 5. Pressure regulator to be supplied with local pressure indicators on the inlet and outlet sides of the valve.

REFERENCED P&IDs & DOCUMENTS		
ENS-NWPVR-PID-24005 : Reactor P&ID for the NW plasgas system		
ENS-NWPVR-PID-24006 : Feed system P&ID for the NW plasgas system		
ENS-NWPVR-PID-24002 : Scrubber P&ID for the NW plasgas system		
ENS-OWPVR-PID-24003 : Oil plasma gasification utilities		
ENS-OWPVR-PID-24008 : Oil plasma gasification P&ID		

FUNC.	NAME	DESIGNATION	SIGNATURE	DATE
PRP'D	P.S.Motau	SENIOR TECHNICIAN ENG		
REVIEW	G.Manuel	CHIEF ENGINEER CONTROL & INSTRUMENTATION		
REVIEW	S.Mngoma	CHIEF MECHANICAL ENGINEER		
REVIEW	W.vd Berg	CHIEF ELECTRICAL ENGINEER		
REVIEW	M.Correia	SENIOR PROCESS ENGINEER		
APPR'D	K.Moodley	CHIEF PROCESS ENGINEER		

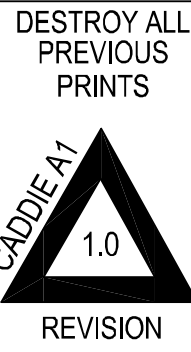
COPYRIGHT
THIS DRAWING IS THE PROPERTY OF THE SOUTH AFRICAN NUCLEAR ENERGY CORPORATION AND MAY NOT, WITHOUT THE WRITTEN AUTHORITY OF THE SOUTH AFRICAN NUCLEAR ENERGY CORPORATION BE COPIED OR USED EITHER WHOLLY OR IN PART FOR ANY PURPOSE OTHER THAN FOR WICH IT IS SUPPLIED.

REV	DESCRIPTION	PRP'D	DATE
0.1	Info Carried Over From AC-NWPVR-PID-21006	PSM	15/03/2024
0.2	Changes As Per ENS-NWPVR-ECP-24008	PSM	15/03/2024
0.3	Removal Of LPG Supply (ECP14)	B.M.K	20/03/2024
0.4	Modification of gas supply system	M.N	19/04/2024
0.5	Change due to ENS-NWPVR-ECP-24006	L.D	14/06/2024
1.0	First Issue	P.S.M	14/01/2024



SCALE - NTS
UNITS - N/A

PROJECT	NW PLASGAS		
TITLE	P&ID DIAGRAM		
DRG.No.	ENS-NWPVR-PID-24004		
SHEET	1 OF 1	TEAMCENTRE No.	-



ENS-NWPVR-PID-24004