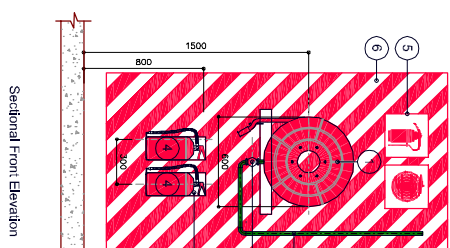
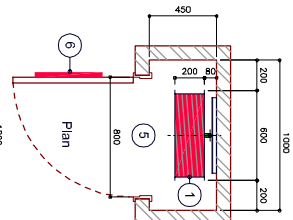


- Legend :
- 1 - 30 Metre fire hose reel
 - 2 - Ø25 fire hose reel supply pipe
 - 3 - Ø25 Stop Valve
 - 4 - 20x5.0kg DCP fire extinguishers
 - 5 - F22 Slings
 - 6 - F24 Slings
 - 7 - 15mm Inlet wooden backing Board to suit the extinguisher

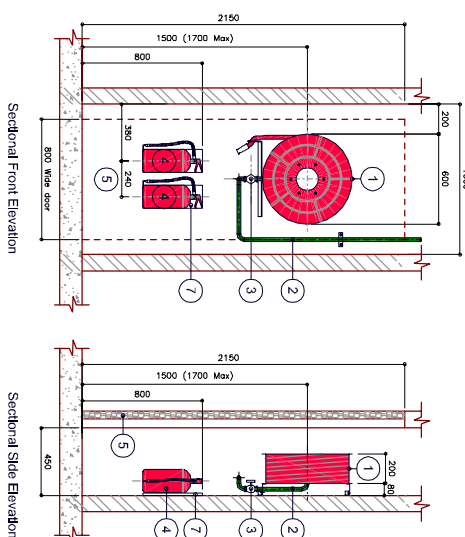


Typical Fire Hose Reel Mounting Detail

Detail
Scale 1:25

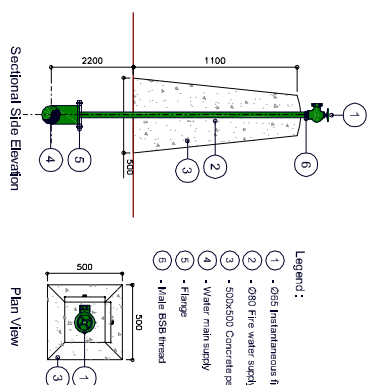


- Legend :**
- ① - 30 Metre fire hose reel
 - ② - Ø25 fire hose reel supply pipe
 - ③ - Ø25 Stop Valve
 - ④ - 2x2x4.5kg DCP fire extinguishers
 - ⑤ - 2150x800 wide cupboard door
 - ⑥ - F22 Signage on door
 - ⑦ - 15mm thick wooden backing board to suit the extinguisher



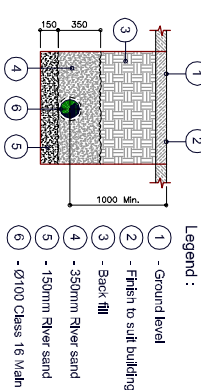
Typical Fire Hose Reel Cupboard Mounting Detail

Detail
Scale 1:25



- Legend:
- ① - Ø65 Instantaneous fire hydrant
 - ② - Ø80 Fire water supply pipe
 - ③ - 500x500 Concrete pedestal
 - ④ - Water main supply
 - ⑤ - Flange
 - ⑥ - Male BSB thread


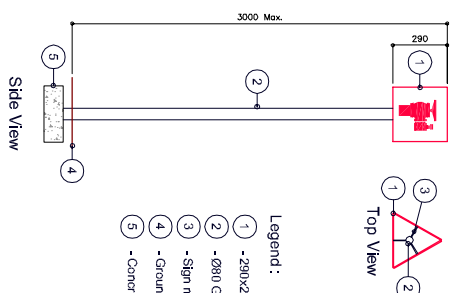
Ø65 Pillar Fire Hydrant
Detail
Scale NTS



- Legend :
- ① - Ground level
 - ② - Finish to suit building

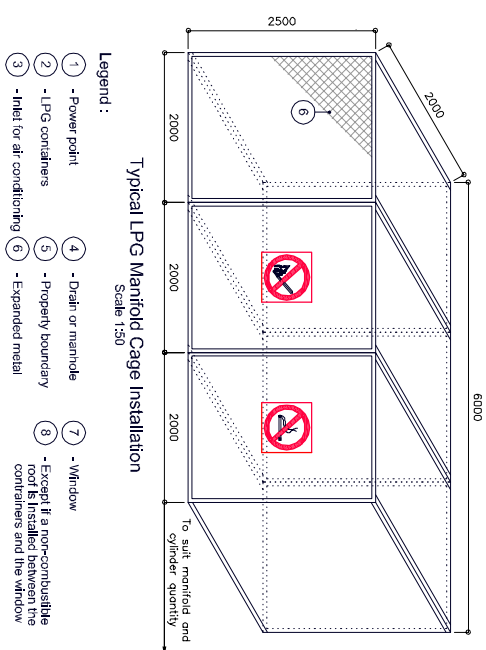
Typical Pipe in Trench Detail
(Trenching and back fill by building contractor)

Detail
Scale 1:50

A circular detail of a pipe with the number 5 inside.

- Legend:
- ① - 290x290 F30 Fire signage
 - ② - Ø80 Galvanised steel pole
 - ③ - Sign mounting brackets
 - ④ - Ground level
 - ⑤ - Concrete footing

Detail
Scale 1:10

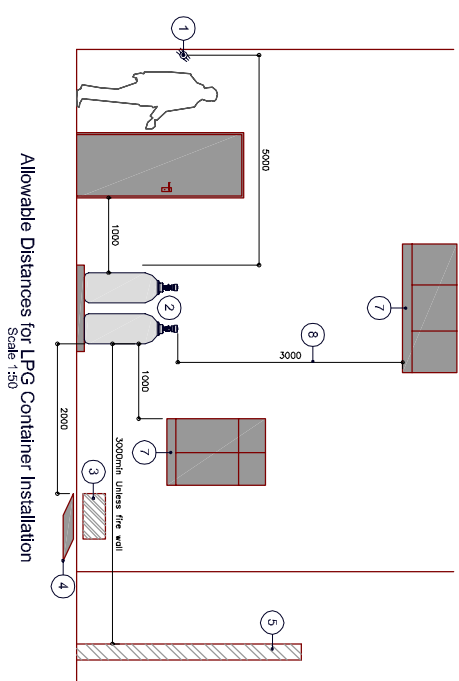


- Legend :**
- ① - Power point
 - ② - LPG containers
 - ③ - Inlet for air conditioning
 - ④ - Drain or manhole
 - ⑤ - Property boundary
 - ⑥ - Expanded metal
 - ⑦ - Window
 - ⑧ - Except if a non-combustible material is installed between the containers and the window

Typical Gas Manifold Installation Detail

Detail 

Scale 1:50



Scale 1:50

[illegible]

ISSUED FOR
REVIEW
2009/03/04
ISSUED FOR
PACKAGE 35 ONLY

