

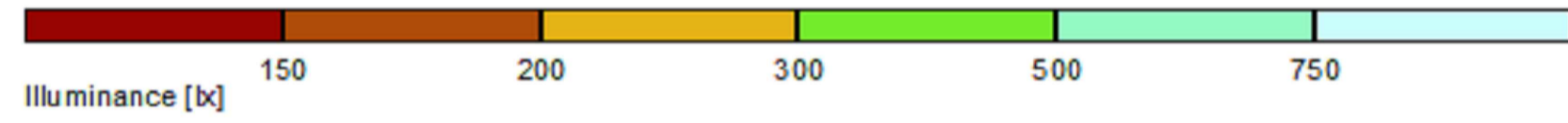
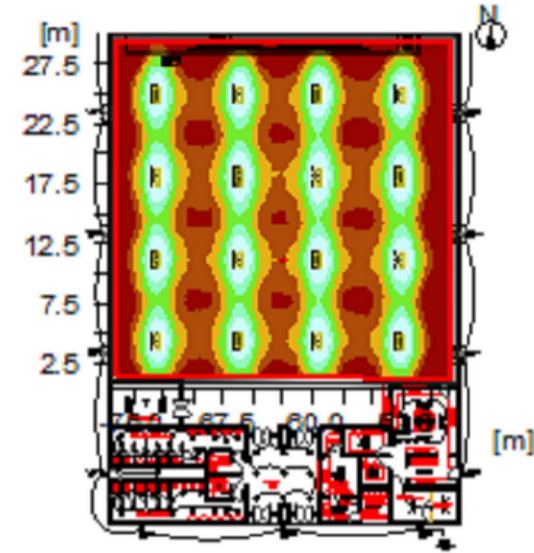
Installation : Multipurpose Hall
 Project number : CE0092
 Date : 20.03.2020



2 Hall

2.2 Summary, Hall

2.2.1 Result overview, Evaluation area 1



General
 Calculation algorithm used
 Maintenance factor
 Total luminous flux of all lamps
 Total power
 Total power per area (839.49 m²)

Average indirect fraction
 0.80
 313600.00 lm
 3680.0 W
 4.38 W/m² (1.36 W/m²/100lx)

Evaluation area 1

Reference plane 1.1
 H horizontal
 E_m
 E_{min}
 E_{min}/E_m (U₀)
 E_{min}/E_{max} (U_d)
 Position

322 lx
 46 lx
 0.14
 0.03
 0.75 m (rot: 0°/0.01°)

Major surfaces

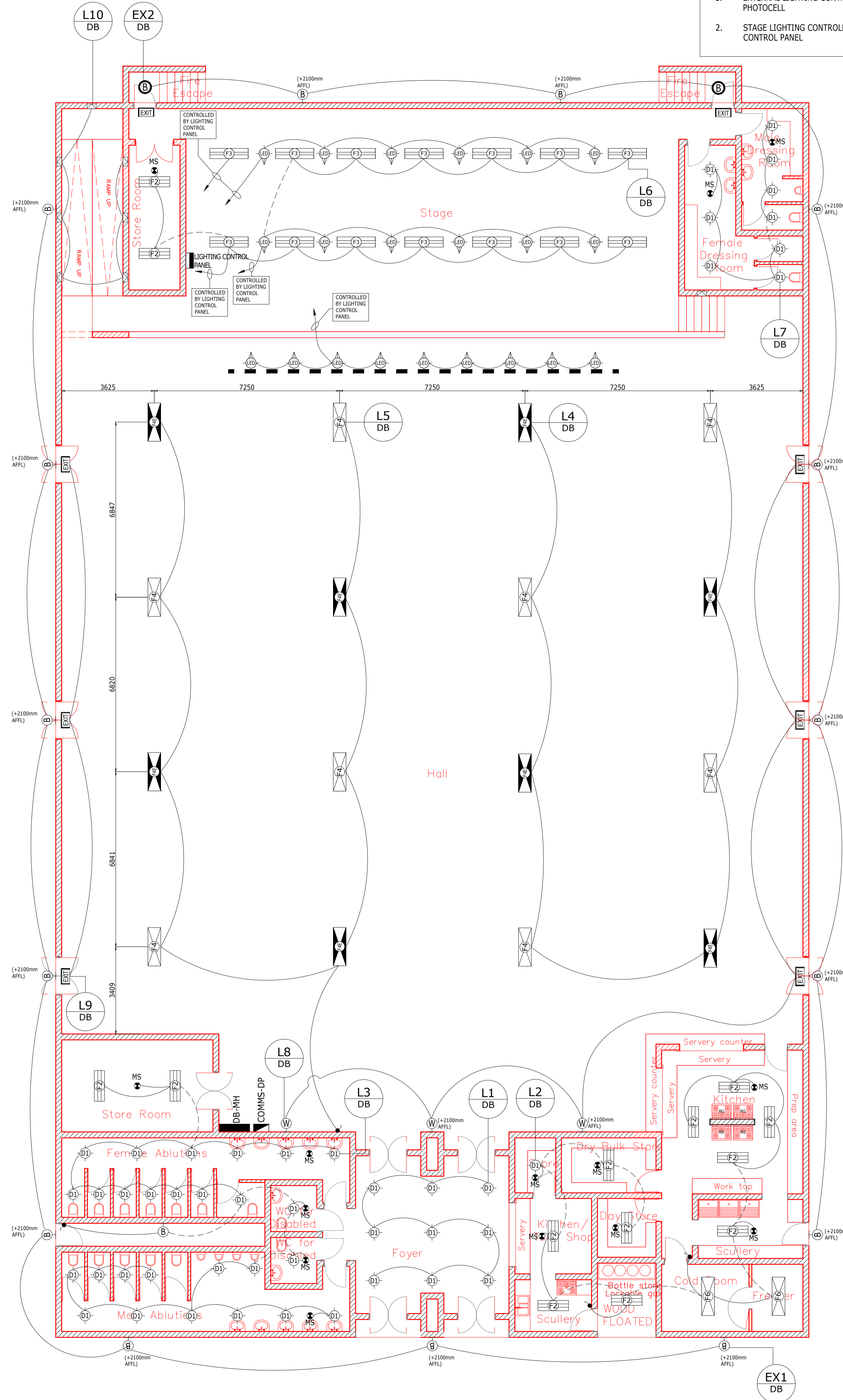
	E _m	U ₀
M 1.5 (Ceiling)	58 lx	0.45
M 1.1 (Wall)	73 lx	0.32
M 1.2 (Wall)	72 lx	0.37
M 1.3 (Wall)	118 lx	0.22
M 1.4 (Wall)	54 lx	0.44

NOTES:

- EXTERNAL LIGHTING CONTROLLED BY PHOTOCELL
- STAGE LIGHTING CONTROLLED BY LIGHTING CONTROL PANEL

LIGHTING LEGEND

- ELECTRICAL DISTRIBUTION BOARD
- ⊖ 1230mm 2x 18W LED OPEN CHANNEL BATTEN LUMINAIRE C/W ECG.
- ⊖ 1230mm 35W LED BATTEN LUMINAIRE WITH COVER
- ⊖ AS ABOVE BUT WITH EMG BATTERY BACKUP (50% FOR 1HR) AND SELF TEST INVERTER.
- ⊖ 1500mm SKY2LINE BATWING 110W LED WITH INDUSTRIAL WINGS ON P2000 TRUNKING
- ⊖ MEGABAY LIGHT FITTING WITH 4x 54W T5 LAMPS AND DIMMABLE ECG
- ⊖ AS ABOVE BUT WITH EMG BATTERY BACKUP (50% FOR 1HR) AND SELF TEST INVERTER.
- ⊖ COLD ROOM FLUORESCENT FITTING WITH 48W LED LAMPS
- ⊖ FREEZER ROOM FLUORESCENT FITTING WITH 48W LED LAMPS
- 220V LIGHT TRACK (SUSPENDED)
- ⊖ RECESSED FOOT LIGHT INSTALLED AT 300mm AFFL
- ⊖ LED SPOTLIGHTS ON P2000 TRUNKING
- ⊖ LIGHTING CONTROL PANEL
- ⊖ 14W LED DOWNLIGHTER.
- ⊖ WALL MOUNTED LED BULKHEAD FITTING WITH 24W LED LAMP.
- ⊖ WALL MOUNTED BRACKET LIGHT FITTING
- ⊖ CEILING / SOFFIT MOUNTED LED BULKHEAD FITTING WITH 24W LED LAMP.
- ⊖ AS ABOVE BUT WITH EMG BATTERY BACKUP (50% FOR 1HR) AND SELF TEST INVERTER.
- ⊖ MOTION SENSOR FOR CONTROL OF LOCAL LIGHTING (SET TO 30min).
- ⊖ LIGHT SWITCH MOUNTED AT 1000mm AFFL TO CENTRE 100mm AWAY FROM DOOR FRAME.



LIGHTING LAYOUT
 1:50

CONSTRUCTION

No.	DATE	AMENDMENT	
A	11/5/21	ISSUED FOR TENDER	D.A.
B	1/10/21	UPDATED FOR TENDER	D.A.

Copyright vests in the Department of Public Works

as-built drawings

certified as-built drawings as per Centralised Drawing Archive AS-BUILT DRAWING REQUIREMENTS

name: _____
 date: _____
 professional registration no.: _____

cad file name: E6(17)(b) page type: A 1

Department: Public Works
 REPUBLIC OF SOUTH AFRICA

DIRECTOR-GENERAL
 MR. MZIWONKE DLABANTU

consultant

discipline: **ELECTRICAL**

service

**TROMPSBURG
 SPECIAL NEEDS SCHOOL
 ELECTRICAL AND ELECTRONIC**

WCS number: **EDIT**

drawing title

**MULTI-PURPOSE HALL
 LIGHTING LAYOUT**

ref.no. **EDIT** designed **K.NEL**
 scale **1:100** drawn **D.ALBIN**
 date **2018.11.02** checked **K.NEL**
 DPW drawing number

E6(17)(b)