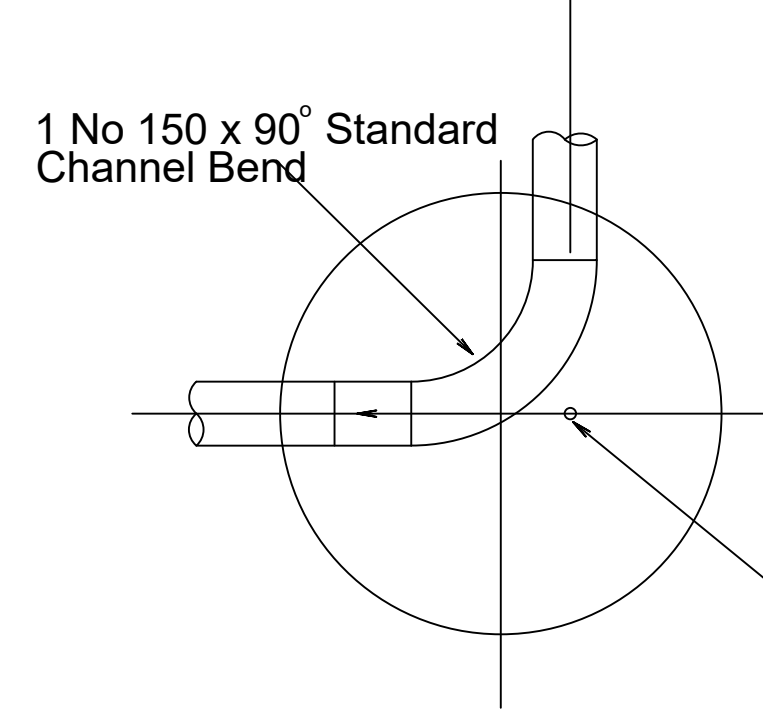


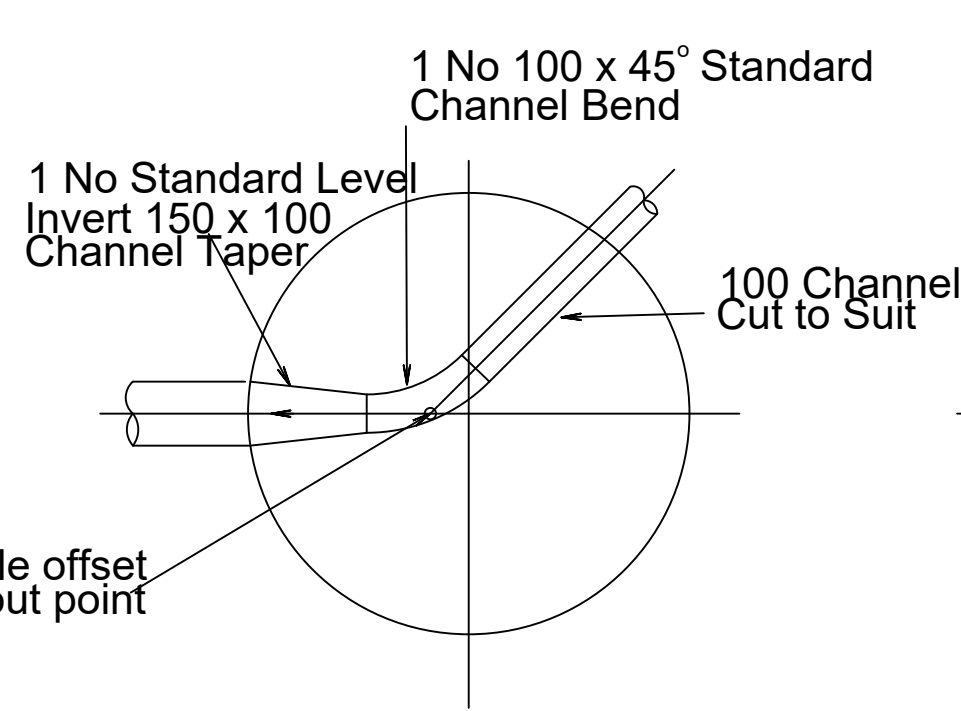
600 x 800 SQUARE BRICK SEWER MANHOLE

SCALE 1:25



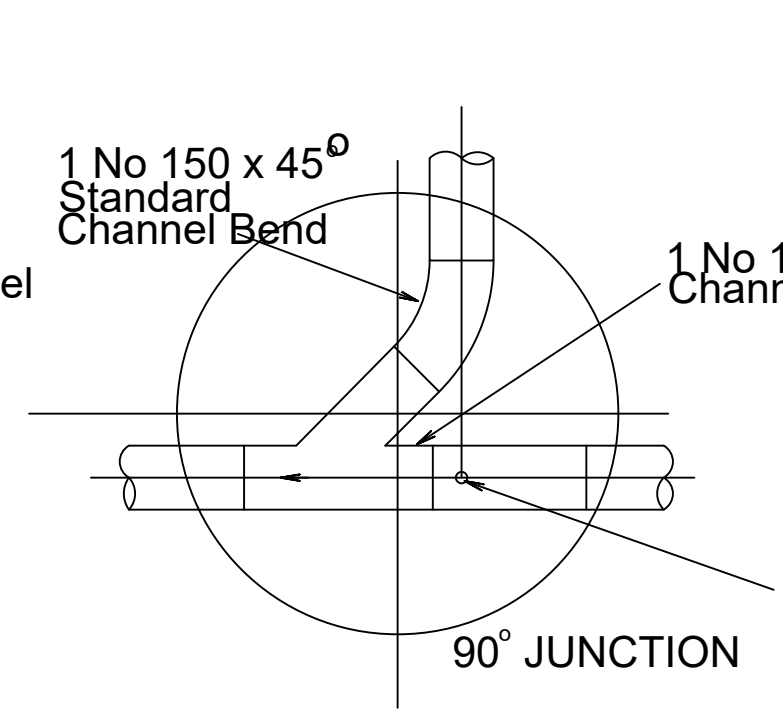
(45° & 22.5° Bends are similar)

BENDS



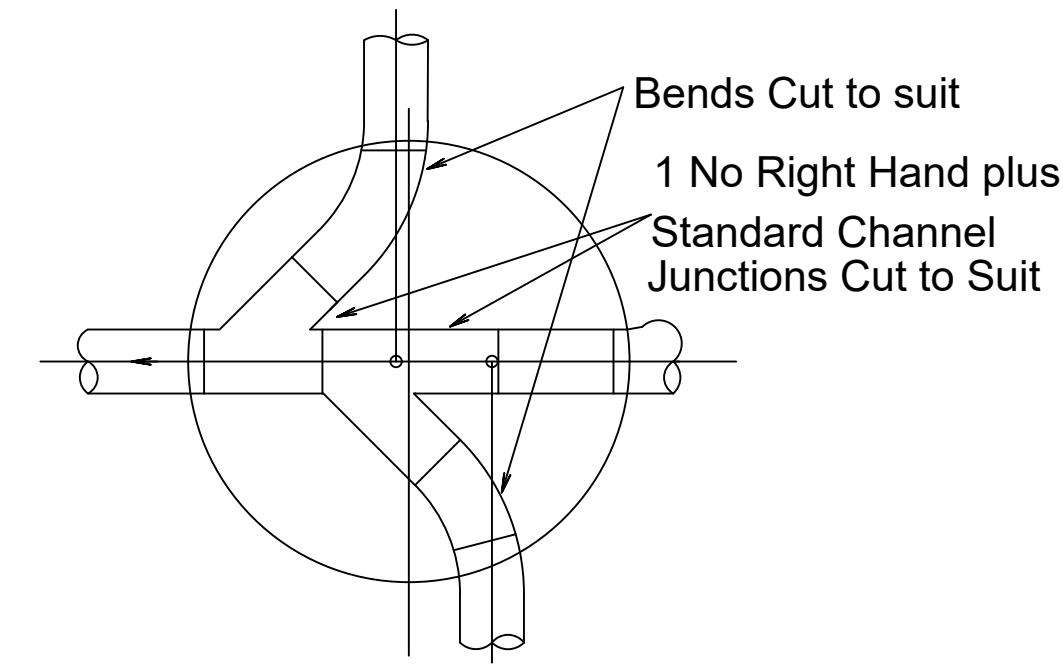
(90° & 22.5° Bends are similar)

TERMINAL BENDS

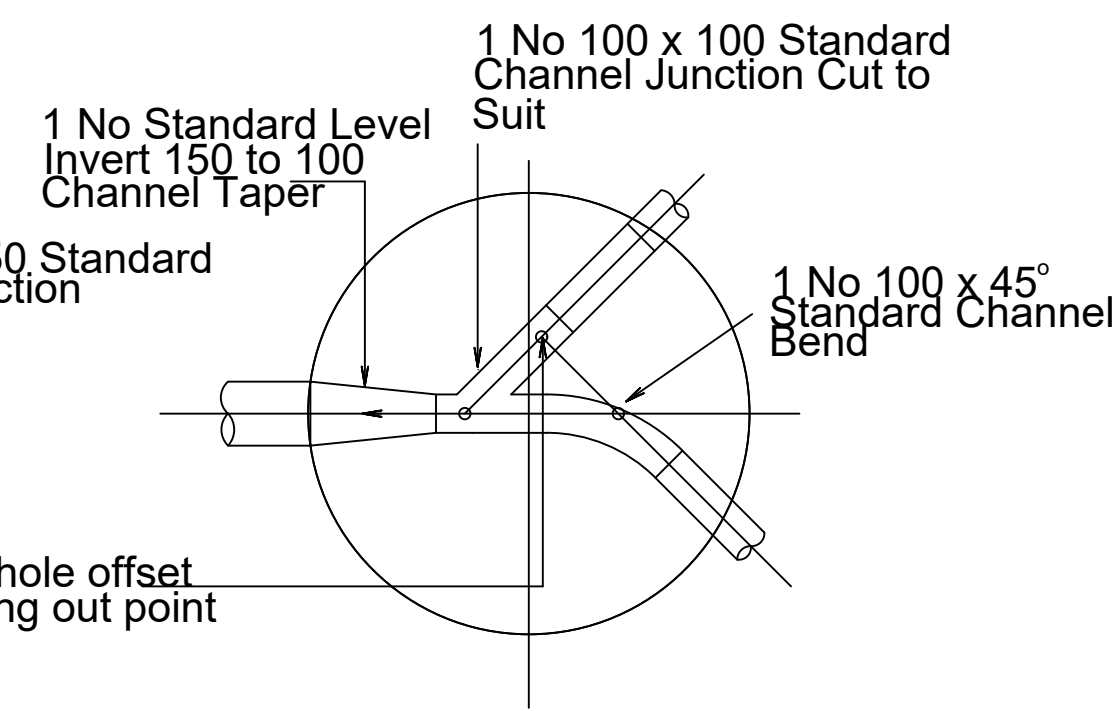


(60° & 45° Junctions are similar)

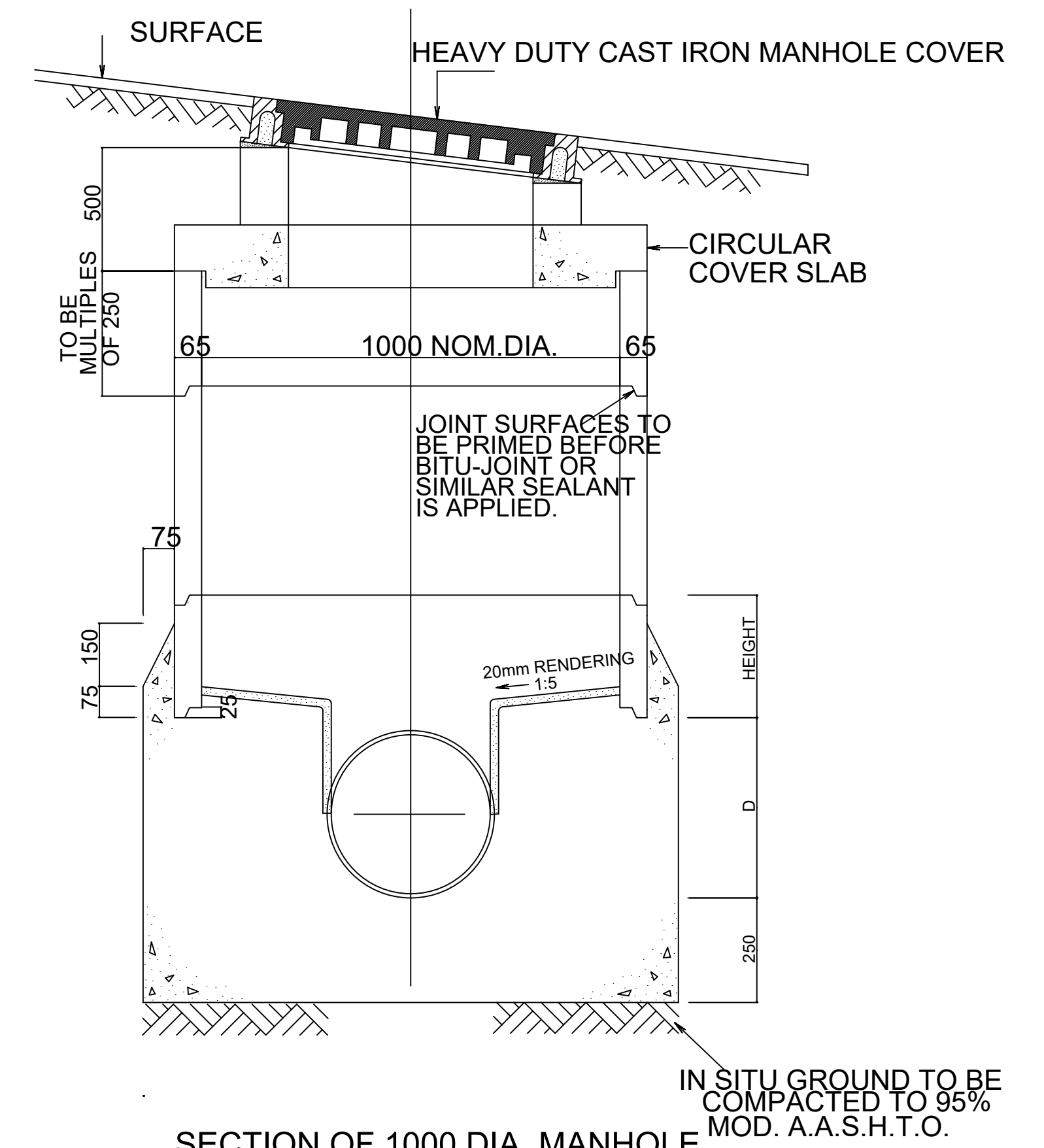
SINGLE JUNCTION



DOUBLE JUNCTION

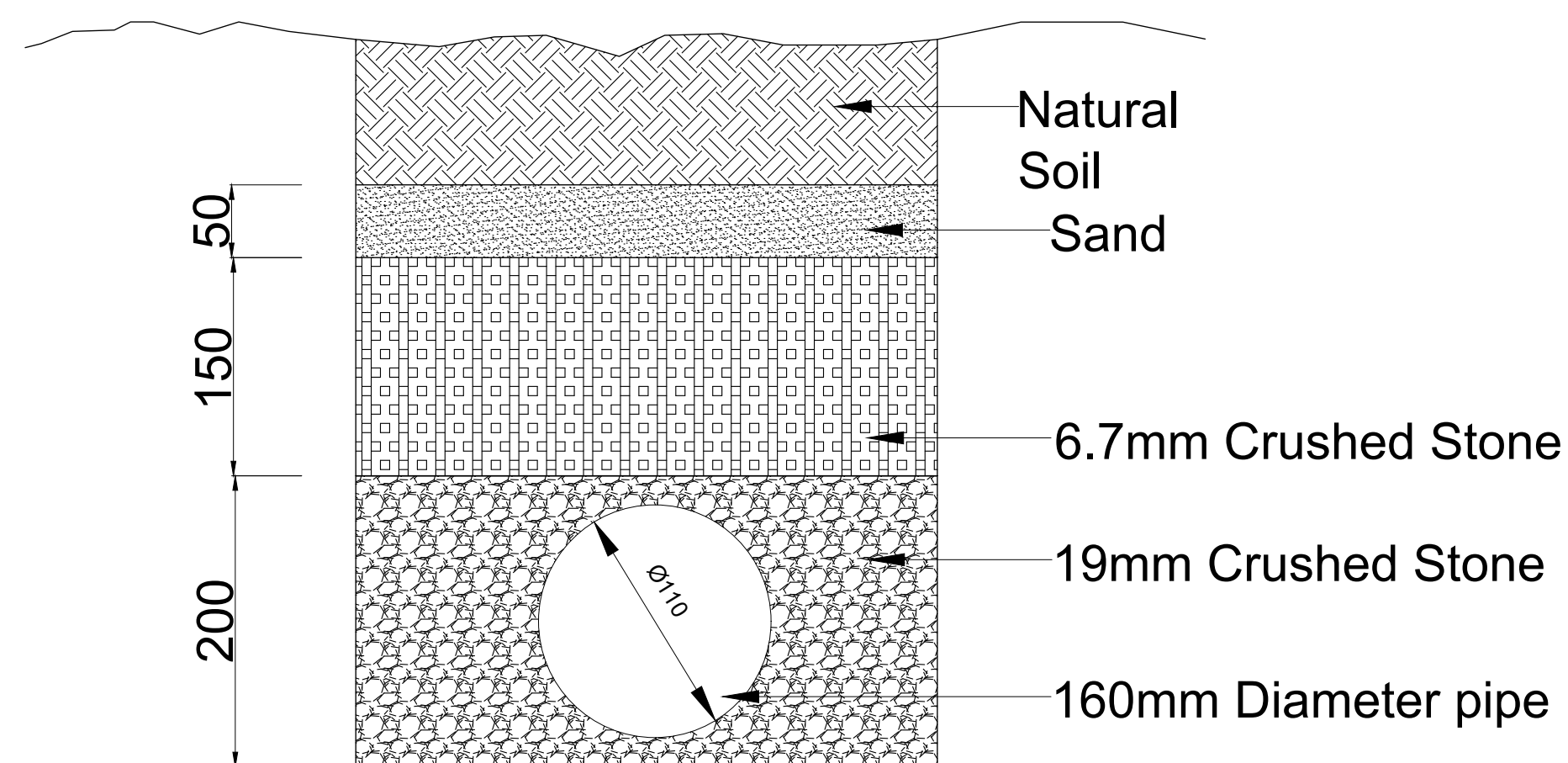


TERMINAL JUNCTION



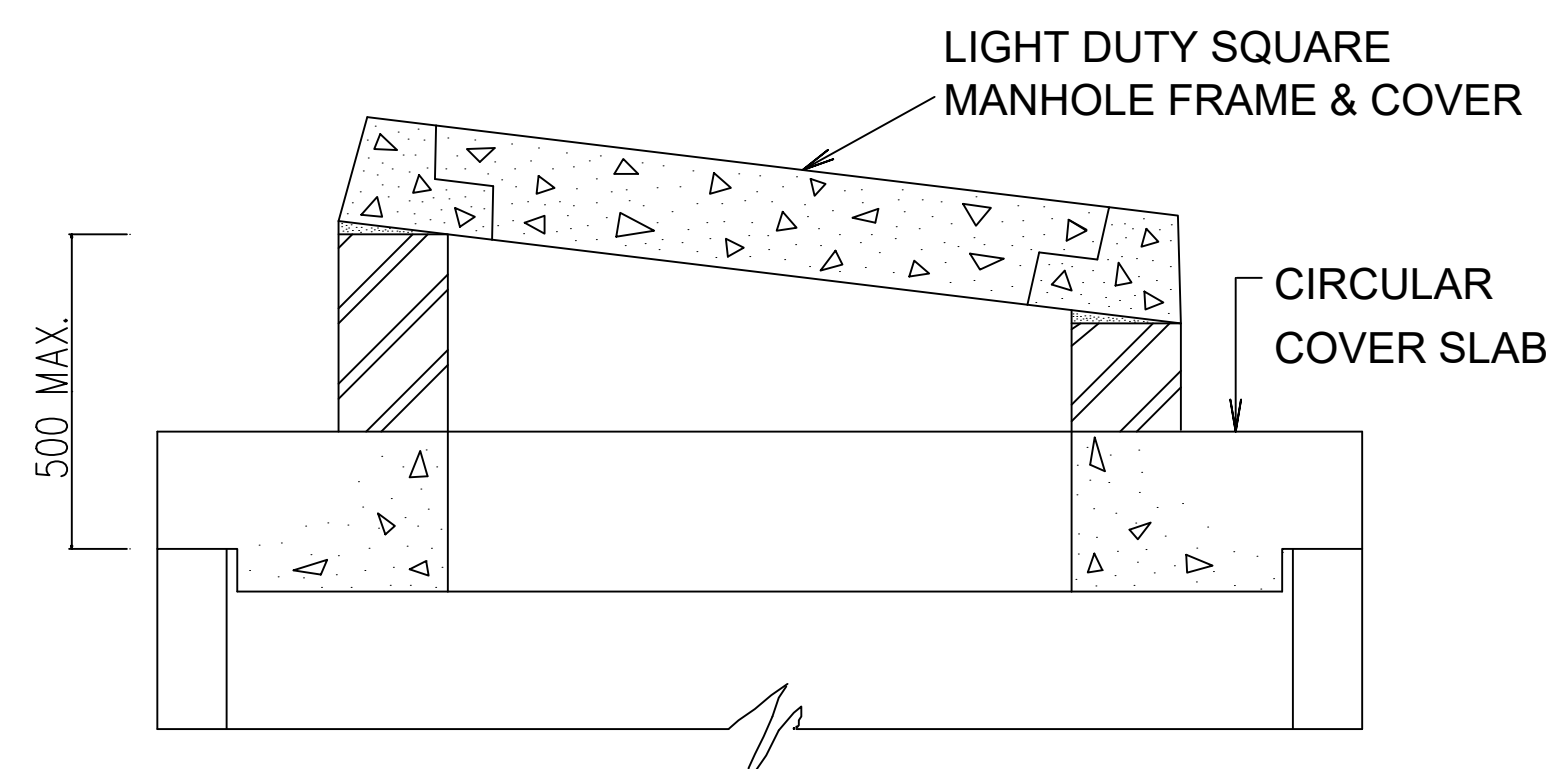
STANDARD CHANNELLING IN PRECAST CONCRETE MANHOLES

NOT TO SCALE



PIPE BEDDING DETAIL

SCALE 1:10



SECTION OF LIGHT DUTY SQUARE MANHOLE FRAME AND COVER

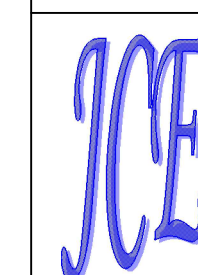
NOTES:

- ALL PRECAST CONCRETE MANHOLE COMPONENTS TO COMPLY WITH THE REQUIREMENTS OF S.A.B.S.1294 (WHERE APPLICABLE)
- LENGTHS OF INDIVIDUAL WALL UNITS ARE TO VARY IN MULTIPLES OF 250mm.
- RENDERING FOR MANHOLE BENCHING SHALL CONSIST OF 1 PART H.A.C. TO 2 PARTS SAND THOROUGHLY MIXED AND APPLIED TO CONCRETE SURFACES WHILE THE LATTER ARE STILL GREEN. RENDERING SHALL BE AT LEAST 20mm THICK.
- ALL PIPES BUILT INTO MANHOLES SHALL NOT EXCEED 1.0 m IN LENGTH AND THE ADJOINING PIPE SHALL NOT EXCEED 2.0m IN LENGTH.
- EVERY u.P.V.C. PIPE BUILT INTO A MANHOLE SHALL HAVE CLEAN DRY SAND (TO S.A.B.S. 1083 TABLE 1.) GLUED TO ITS OUTSIDE AS RECOMMENDED BY PIPE MANUFACTURER USING SPECIAL PVC CEMENT (HENKEL S.A. PTY. LTD. TANGIT OR SIMILAR) TO ENSURE GOOD ADHESION TO BASE CONCRETE.
- IN LOCATIONS DEFINED BY THE ENGINEER AS SUBJECT TO FLOODING, C.I. MANHOLE COVERS AND JOINTS SEALED WITH BOSTIK BUTYL TAPE OR SIMILAR, SHALL BE USED.

DESIGNED BY:	M.M.S	INFORMATION Full Signatures For Client For Consulting Engineer Consultant's Drawing No.:	APPROVED For Client 20 / / For Consulting Engineer 20 / /	NO.	REVISION DETAILS	REV NO.	DATE	REVISED BY	APPRVD BY
DRAWN BY:	TM			0	ISSUED FOR TENDER PURPOSES	0	APR. 2023		
CHECKED BY:	M.M.S								
ISSUED BY:	M.M.S								



CITY OF MBOMBELA
P. O Box 45
Mbombela
1200
Tel: +27 (0) 13 759 2041
Fax: +27 (0) 13 759 2274



CONSULTING ENGINEERS
Jamela Consulting Engineering and Project Management
1999/015744/23
16A Allie van Bergen Street
P.O. Box 419
WHITE RIVER, 1240
Tel: (013) 750 0160
Fax: (013) 751 1980
Email: jamela@jamela.co.za

BID NUMBER: COM44/2023	SHEET 2 OF 2
UPGRADING OF UMJINDI SOLID WASTE DISPOSAL SITE & ANCILLARY SERVICES IN UMJINDI, BARBERTON	SCALE: AS SHOWN
SEWER TYPICAL DETAILS	DRAWING NO: COM44/2023/SEW002
	REVISION 00