

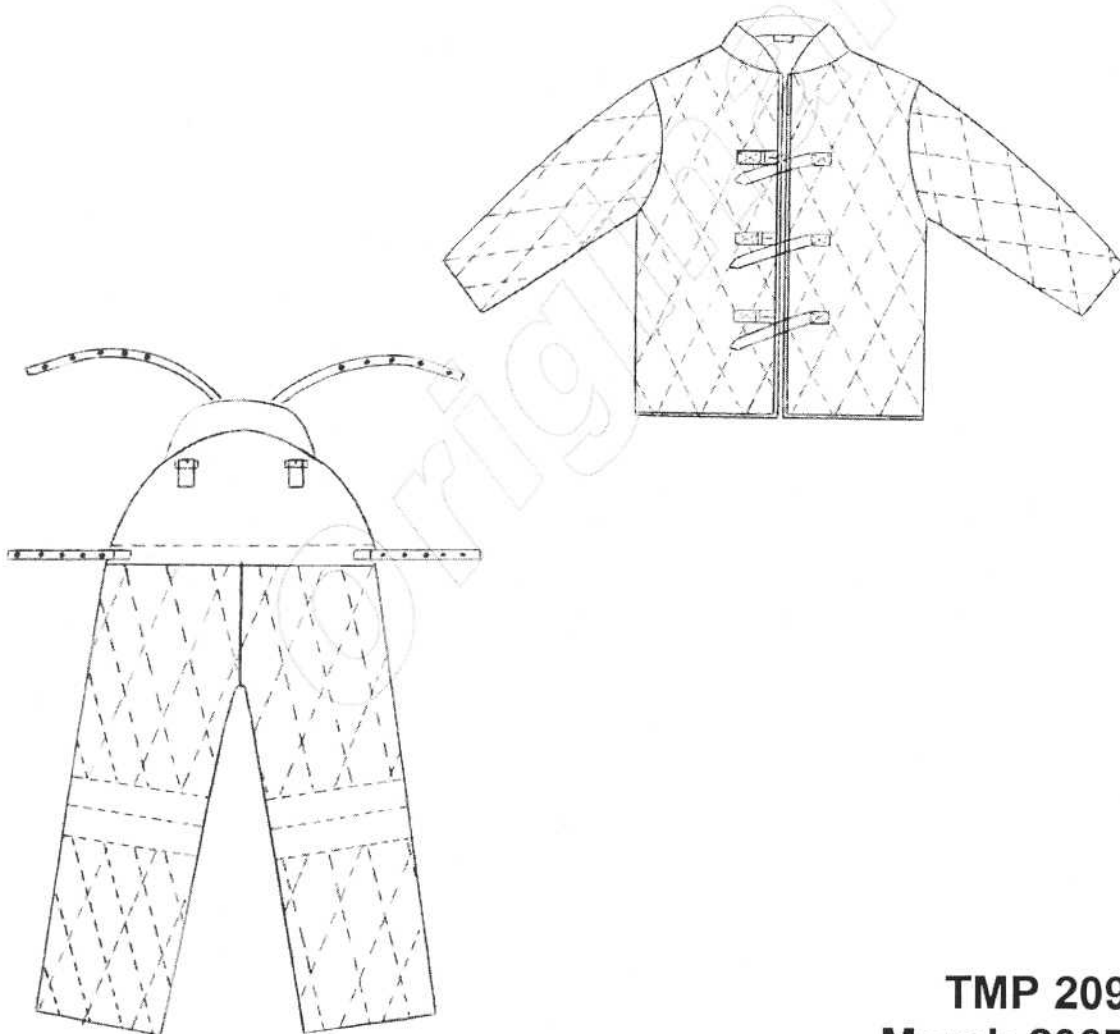
Item 5 - 3.1.5.1- Nr 1 - Annexure E1 - Canine K9 Attack Suit

**PRIVATE SPECIFICATION**

prepared for the

**TSHWANE METRO POLICE**

**ATTACK SUIT**



**TMP 209**  
**March 2007**

## 1. Scope

This specification covers the material, cut, make and trim of attack suit for use by dog handling personnel of the Tshwane Metro Police.

## 2. Definitions

For the purpose of this specification the definitions given in SANS 10371 "Terms and definitions for clothing" and the following shall apply:

**Acceptable:** Acceptable to the Tshwane Metro Police.

**Nominal:** Subject to the tolerances normal to good manufacturing practice.

**SANS:** South African National Standards.

## 3. Style

### **Jacket**

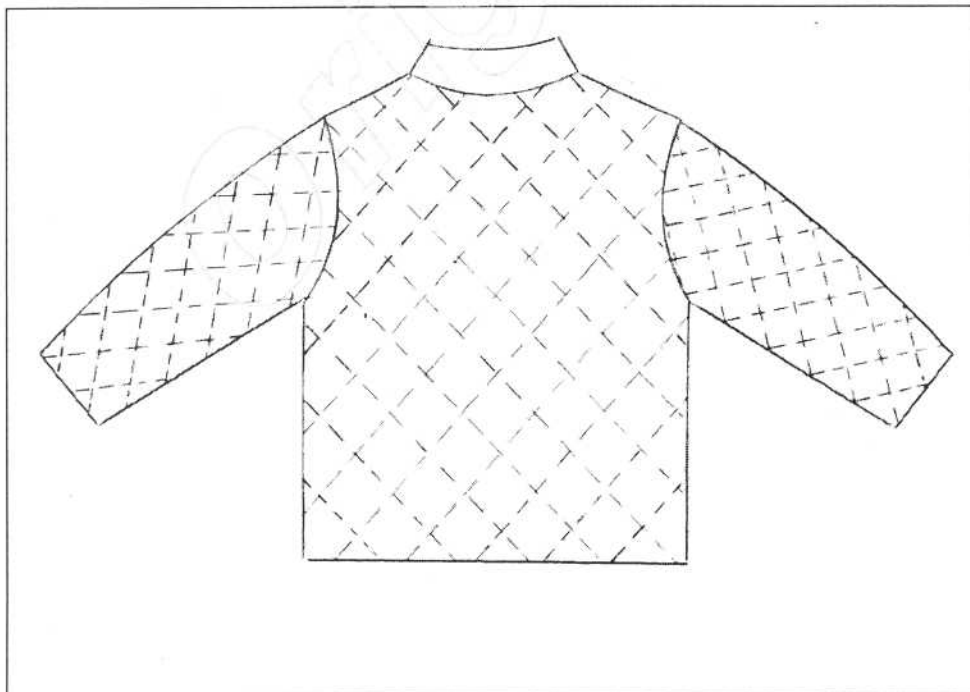
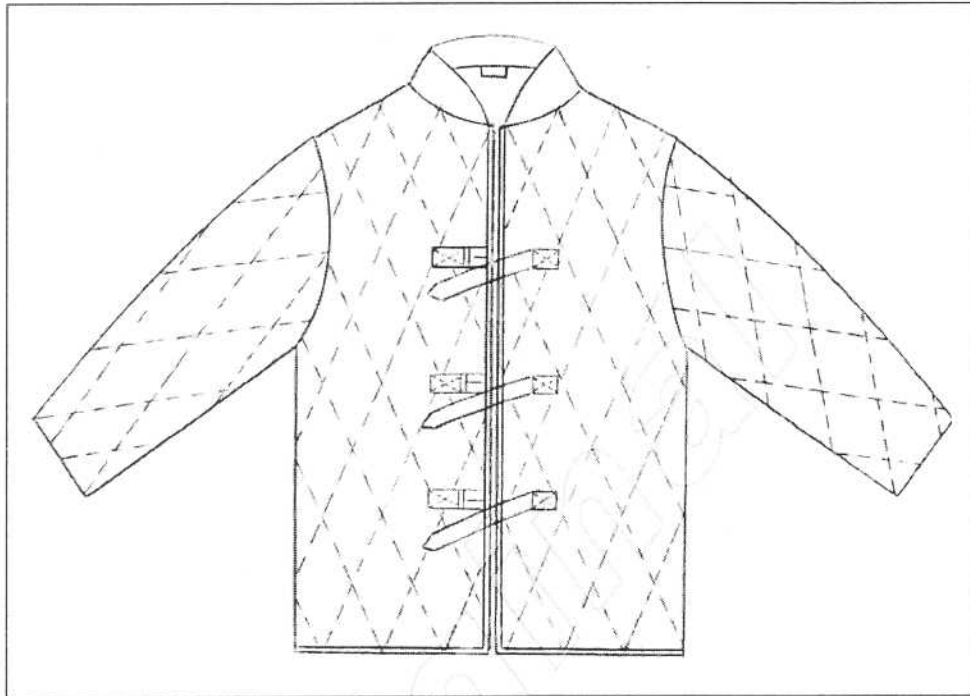
- ◆ front closure with webbing straps and buckles
- ◆ long sleeves

### **Trousers**

- ◆ to have an opening at each side waist and buckle closure
- ◆ to be fitted with webbing braces

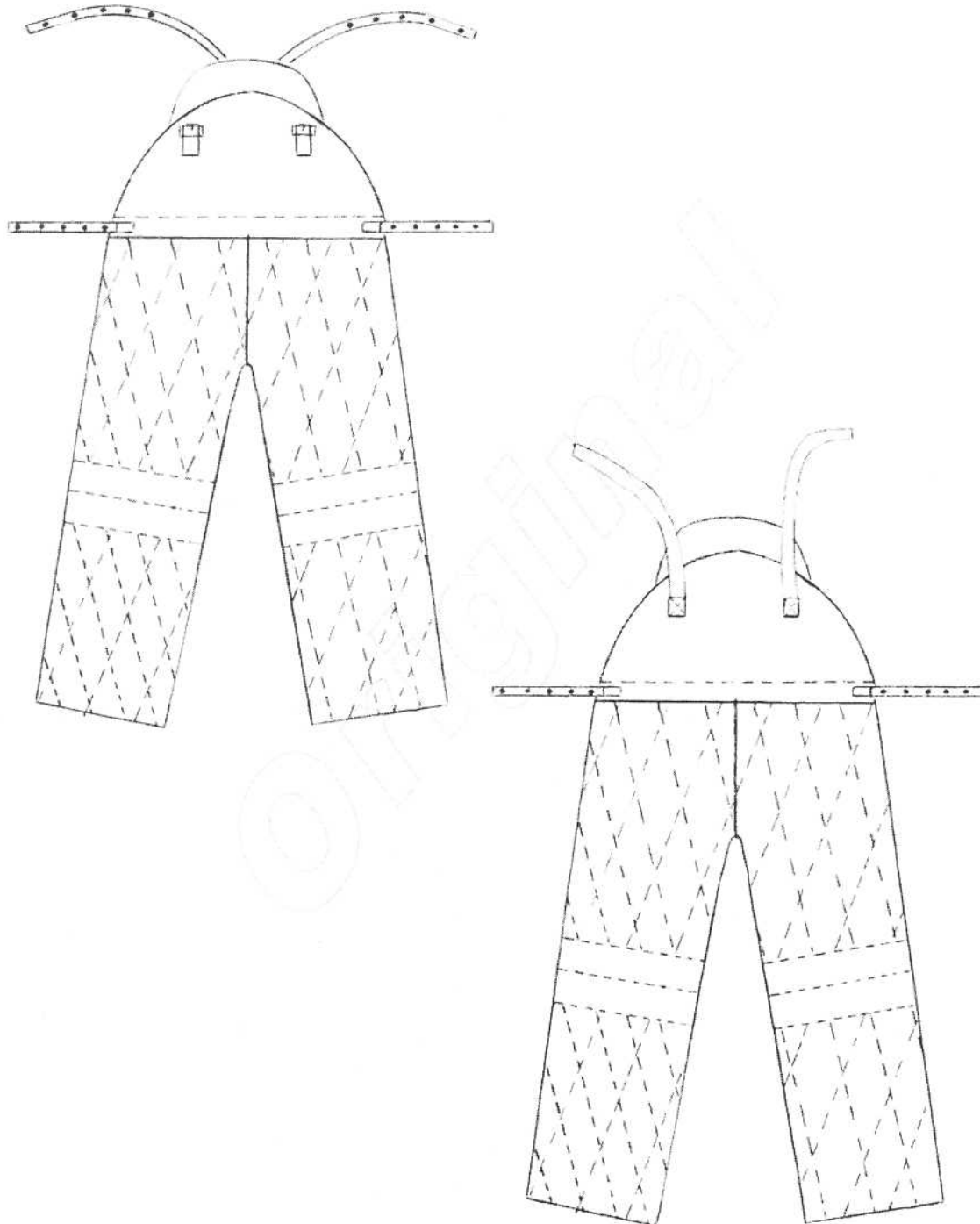
Responsibility	Doc Issue	Page	No of pages
Tshwane Metro Police	1	2	15

## 4. Illustration



Responsibility	Doc Issue	Page	No of pages
Tshwane Metro Police	1	3	15

## 4. Illustration



Responsibility	Doc Issue	Page	No of pages
Tshwane Metro Police	1	4	15

## 5. Materials - General

No materials will be supplied by the Tshwane Metro Police (unless otherwise specified in the order or contract).

- ♦ The materials specified in 6 and 7 are to be supplied and used by the manufacturer

A trim chart containing a sample of each component material (as given in 7) must accompany the pre-production samples

## 6. Outer material

Outer material to:

- ♦ be an acceptable plain weave hessian fabric

## 7. Component materials

### 7.1 Lining

- ♦ an acceptable woven fabric
- ♦ surface to be brushed

### 7.2 Padding

- ♦ a double layer of an acceptable non-woven hessian fabric
- ♦ with a nominal thickness 10 mm

### 7.3 Webbing

- ♦ an acceptable webbing strap
- ♦ a nominal width 25 mm

### 7.4 Buckles

- ♦ metal buckles that will acceptably accommodate webbing width of 25 mm

### 7.5 Binding

- ♦ of outer material

Responsibility	Doc Issue	Page	No of pages
Tshwane Metro Police	1	5	15

## 7.6 Eyelets

- ♦ to be metal
- ♦ that will acceptably accommodate the prong of the buckle
- ♦ washers to be of nickel-plated metal
  - to fit the eyelets

## 7.7 Threads

- ♦ to comply with relevant requirements of SANS 1362 "Sewing threads"
- ♦ colour to be an acceptable match to the colour of the material with which they are used
- ♦ polyester-and-cotton core-spun
  - ticket No. 20

## 8. Workmanship

### The suits to be:

- ♦ cut and made with first-class workmanship throughout
- ♦ of uniform and acceptable make, colour and finish

### To be free from:

- ♦ defects, that affect their appearance or may affect their serviceability (or both)
- ♦ marks
- ♦ spots
- ♦ stains, incurred in the making-up

### Seams and stitches to be:

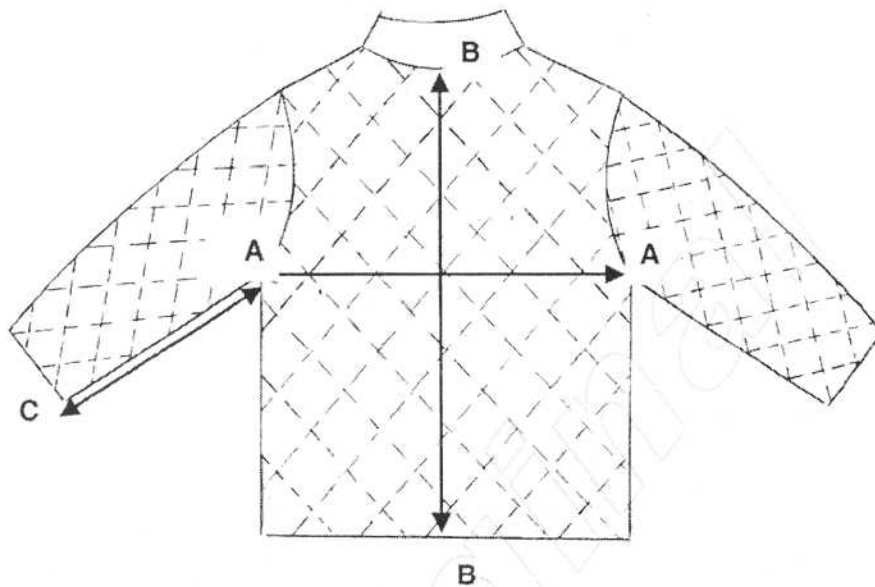
- ♦ smooth and uniform
- ♦ free from twists, pleats and puckers
- ♦ sufficiently extensible to avoid seam cracking and undue shrinkage in use

### Ends of sewing to be:

- ♦ trimmed and loose threads removed
- ♦ back-tacked if unsecured

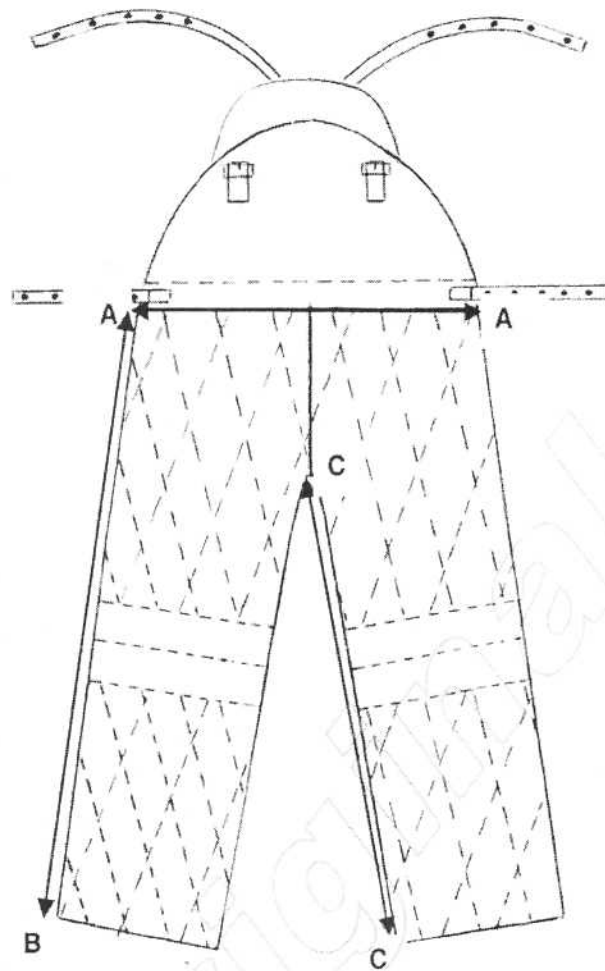
Responsibility	Doc Issue	Page	No of pages
Tshwane Metro Police	1	6	15

## 9. Sizes



### Jacket measurements:

MEASURING POINT		DESCRIPTION
A - A	Chest circumference	Measure across the width of the garment at the base of the scye, with garment spread completely flat, and multiply by two.
B - B	Back length	Measure the length from the centre neck point to the bottom edge of the garment.
A - C	Underarm sleeve length	Measure from the base of the scye along the underarm seam to the bottom edge of the sleeve.



**Trouser measurements:**

MEASURING POINT		DESCRIPTION
A - A	Waist circumference	Measure across the top edge of the waistband (front and back top edges aligned) and multiply by two.
B - B	Outside leg length	Measure from the top edge of the waistband to the bottom of the garment.
A- C	Inside leg length	Measure from the crotch seam to the bottom edge of the garment.



Table 1 – Size range

1	2	3	4	5	6	7
Size designation	Nominal finished measurements, cm					
	JACKET			TROUSER		
	Chest	Length	Sleeve length	Waist	Outside leg length	Inside leg length
ONE SIZE	126	80	45	104	105	80
The attach suit to be made in one size only and this are the control measurements.						

## 10. Make

Illustrations are not to scale and are for guidance only, and unless inconsistent with the text, all measurements are nominal.

### 10.1 JACKET

#### 10.1.1 Body

- ♦ of outer material, fully interlined and padding
  - to be quilted in a diamond pattern with rows of stitching 80 mm apart
  - to be lined with lining
  - to be bound at the hem
  - to consist of two foreparts and a back

#### 10.1.2 Foreparts

- ♦ to be seamed together at the sides and shoulders
- ♦ to be fully interlined with padding
- ♦ of outer material
  - to be padded

##### Left forepart

- ♦ to have three straps of webbing
  - of finished length 18 cm
  - spaced equidistantly and box-tacked through the outer material, the padding and the lining
  - the free section of the straps to be of length 14 cm and to have five eyelets

##### Right forepart

- ♦ to have three loops of webbing of finished length 60 mm
  - each securing a buckle
  - boxed-tacked through the outer material, the padding and the lining
  - to correspond with the straps on the left forepart

Responsibility	Doc Issue	Page	No of pages
Tshwane Metro Police	1	9	15

### 10.1.3 Sleeves

- ♦ to be one-piece set-in sleeves
- ♦ fully interlined with padding
- ♦ fully quilted in a diamond pattern with rows of stitching
  - 80 mm apart
- ♦ to be hemmed 10 mm at the cuffs
  - fully lined with lining

### 10.1.4 Collar

- ♦ to be a stand collar
- ♦ of outer material
- ♦ to be lined with lining
- ♦ of finished width 80 mm
  - measured at the centre back, tapering to nothing at the centre front

## 10.2 TROUSER

### 10.2.1 Front and back

- ♦ of outer material interlining with padding
- ♦ interlined with padding
- ♦ lined with lining
- ♦ the outer material and the padding to be quilted in a diamond pattern with rows of stitching 80 mm apart except the knee area
  - the plain knee area to be a finished depth of 14 cm, that is divided by a rows of stitches
- ♦ bottom hem to be bound with binding of outer material
- ♦ the outside leg seams to be open 20 cm at the top and hemmed, for waist adjustment purpose

### 10.2.2 Front

- ♦ to have a shaped bib
  - of outer material
  - lined with lining
  - of length 30 cm
  - to have two loops of webbing each securing a buckle
    - > 22 cm apart and 50 mm from the shaped top edge
    - > to be box-tacked to the front bib
  - to have a webbing strap on each side of the bib of finish length 21 cm
    - > box-tacked
    - > positioned at the bottom of the bib, through the waist, as to leave a section of 12 cm
    - > to have five equidistantly spaced eyelets

### 10.2.3 Back

- ♦ to have a shaped bib
  - of outer material
  - lined with lining
  - of length 36 cm
  - to have a loop of webbing of finished length 70 mm and securing a buckle, to be box-tacked to each side at the bottom, to correspond with the strap on the front bib
  - to have two webbing straps
    - > of finished length 72 cm
    - > to be securely box-tacked to the back bib
    - > positioned 12 cm apart and 10 cm from the shaped top edge
    - > each strap to have five eyelets at 40 mm interval, with the last eyelet 60 mm from the free end of the strap

Responsibility	Doc Issue	Page	No of pages
Tshwane Metro Police	1	10	15

## 11. Stitches, seams and stitchings

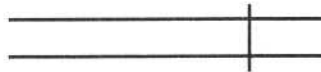
### 11.1 Stitches

Single needle lock stitch

### 11.2 Seams

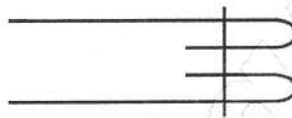
Seams to be at least 10 mm wide

**Side seam:** seam type SSa



Superimpose two or more plies of material and seam with the appropriate number of rows of stitches positioned at the specified distance(s) from the aligned edges.

**Other seams:** seam type SSc-2



Superimpose two plies of material, turn in the specified width at the edge of each ply and seam through the turned edges with the appropriate number of rows of stitches (positioned at the specified distance (s) from the edges).

### 11.3 Number of stitches

**Seams:**  $20 \pm 2$  per 10 cm

## 12. Packing and marking

### 12.1 Packing

The attack suits to be:

- ♦ delivered in a commercially dry condition
- ♦ so packed that they will not be damaged in transit or in storage
- ♦ individually packed in a plastics envelope of suitable size and shape
- ♦ unless otherwise specified in the order or contract, acceptably packed for transportation in bulk containers

Responsibility	Doc Issue	Page	No of pages
Tshwane Metro Police	1	11	15

## 12.2 Marking

Each bulk container to have a label securely attached to the outside. This label to be visible when the containers are stacked and to provide the following information in legible and indelible marking:

- ◆ the manufacturer's name or trade mark or both
- ◆ the designation, i.e. "Attack suit"
- ◆ the quantity
- ◆ the year of manufacture

## 12.3 Additional marking

When so required by the Tshwane Metro Police, attack suit, envelopes or bulk containers (or any combination of these) to bear information additional to that specified above.

### Item 5 - 3.1.5.1- Nr 1 - Annexure E1 - Canine K9 Attack Suit

Responsibility	Doc Issue	Page	No of pages
Tshwane Metro Police	1	12	15

## 13. Normative references

The following standards contain provisions which, through reference in this text, constitute provisions of this specification. All standards are subject to revision and, since any reference to a standard is deemed to be a reference to the latest edition of a standard, parties to agreements based on this specification are encouraged to take steps to ensure the use of the most recent editions of the standards indicated below. Information on currently valid national and international standards may be obtained from Standards South Africa.

**SANS 1362**, *Sewing threads*.

**SANS 10371**, *Terms and definitions for clothing*.

Responsibility	Doc Issue	Page	No of pages
Tshwane Metro Police	1	13	15

**Annex A**  
(Normative)

**Special conditions of tender**

**A-1** Unless otherwise stated, the South African Bureau of Standards shall be the inspecting authority.

**A-2** Three pre-production sample attack suits, shall have been inspected, tested and approved by the inspecting authority before bulk production is commenced. Each one of these samples shall be accompanied by a trim chart containing a sample of each component material (as given in 7) and the relevant certificates. It shall be the duty of the manufacturer to give adequate notice to the inspecting authority of the availability of these samples.

**A-3** The attack suit shall be subject to inspection during the course of manufacture. The inspector shall, during normal working hours, be given all reasonable facilities for carrying out his duties and shall have the right of entry into the contractor's factory and the factory or works of any subcontractor where work on attack suit supplied to this specification may be in progress.

**A-4** The contractor shall inspect the finished attack suit for compliance with the specification before submitting them to the inspecting authority for final inspection.

**A-5** Before acceptance, the attack suit shall have been inspected and tested by the inspecting authority and found to comply with the requirements of the specification.

**Item 5 - 3.1.5.1- Nr 1 - Annexure E1 - Canine K9 Attack Suit**

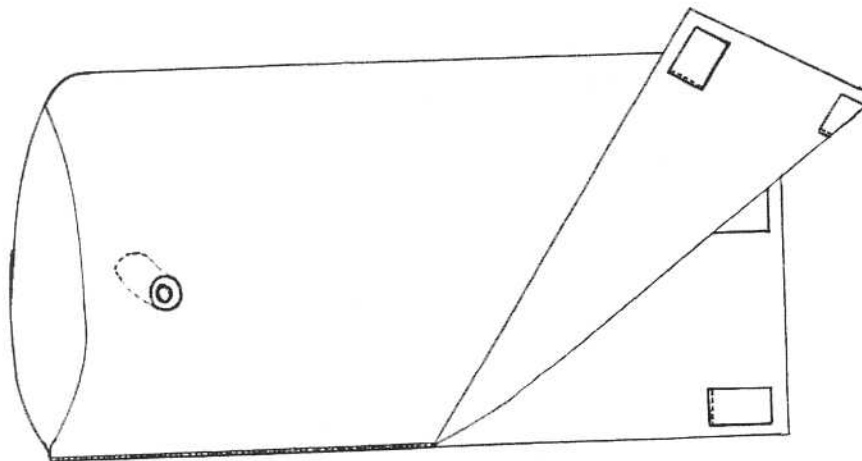
Responsibility	Doc Issue	Page	No of pages
Tshwane Metro Police	1	14	15

**PRIVATE SPECIFICATION**

prepared for the

**TSHWANE METRO POLICE**

**BITE ARM (WITHOUT VISOR)**



**TMP 210**  
**September 2005**

## 1. Scope

This specification covers the material, cut and make of bite arm (without visor) for dog handling personnel of the Tshwane Metro Police.

## 2. Definitions

For the purpose of this specification the definitions given in SANS 10371 "Terms and definitions for clothing" and the following shall apply:

**Acceptable:** acceptable to the Tshwane Metro Police.

**Nominal:** subject to the tolerances normal to good manufacturing practice.

## 3. Style

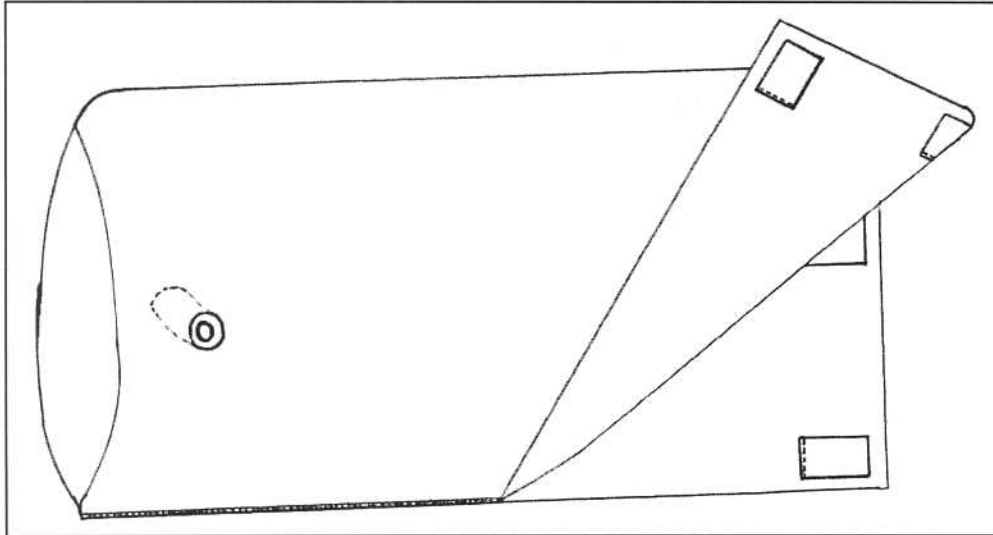
- ♦ cylindrical shape
- ♦ padded
- ♦ hand grip

Item 5 - 3.1.5.1- Nr 2 - Annexure E2 - Canine K9 Bite Arm Without Visor

Ref. No	Date	Responsibility	Doc Issue	Page	No of pages
TMD 210	September 2005	TMD	1	2	11



## 4. Illustration



Item 5 - 3.1.5.1- Nr 2 - Annexure E2 - Canine K9 Bite Arm Without Visor

Ref. No	Date	Responsibility	Doc Issue	Page	No of pages
TMD 210	September 2005	TMD	1	2	11

## 5. Materials - General

No materials will be supplied by the Tshwane Metro Police (unless otherwise specified in the order or contract).

- ♦ The materials specified in 6 and 7 are to be supplied and used by the manufacturer

A trim chart containing a sample of each component material (as given in 7) must accompany the pre-production samples

## 6. Outer material

Outer material to:

- ♦ be an acceptable 2/2 twill hessian fabric

## 7. Component materials

### 7.1 Lining

- ♦ an acceptable plain woven hessian fabric

### 7.2 Padding

- ♦ an acceptable foam backed cotton
  - of nominal thickness 10 mm
- ♦ an acceptable PVC coated fabric
  - backed with a felted hessian material
  - of nominal thickness 10 mm

### 7.3 Webbing

- ♦ an acceptable webbing strap
- ♦ of nominal width 35 mm

### 7.4 Threads

- ♦ to comply with relevant requirements of SANS 1362 "Sewing threads"
- ♦ polyester-and-cotton core-spun,
  - ticket No. 20

Ref. No	Date	Responsibility	Doc Issue	Page	No of pages
TMP 210	September 2005	TMP	1	1	11

## 8. Workmanship

### The bite arms to be:

- ♦ cut and made with first-class workmanship throughout
- ♦ of uniform and acceptable make, colour and finish

### To be free from:

- ♦ defects, that affect their appearance or may affect their serviceability (or both)
- ♦ marks
- ♦ spots
- ♦ stains, incurred in the making-up

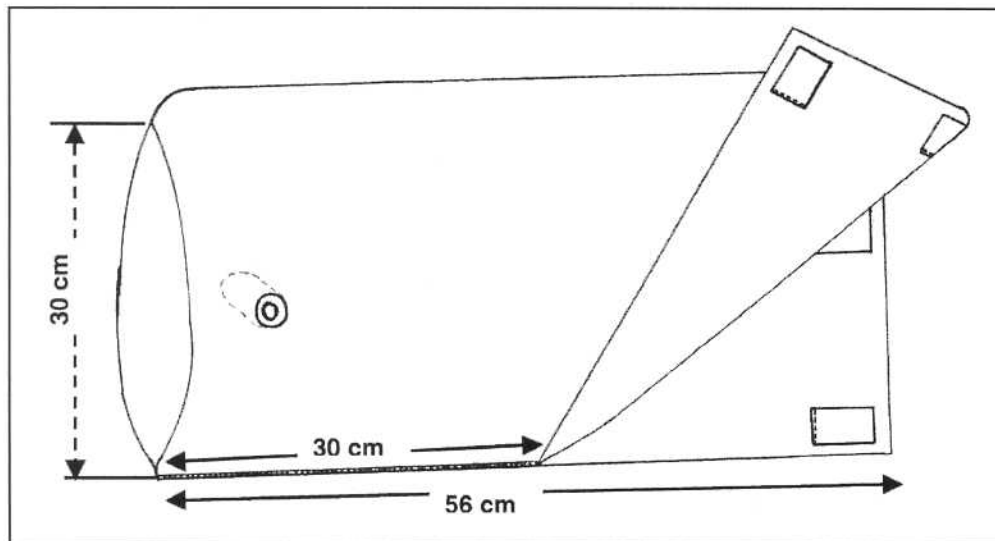
### Seams and stitches to be:

- ♦ smooth and uniform
- ♦ free from twists, pleats and puckers
- ♦ sufficiently extensible to avoid seam cracking and undue shrinkage in use

### Ends of sewing to be:

- ♦ trimmed and loose threads removed
- ♦ back-tacked if unsecured

## 9. Sizes



- ♦ bite arms (without visor) to be made in one size only

Item 5 - 3.1.5.1- Nr 2 - Annexure E2 - Canine K9 Bite Arm Without Visor

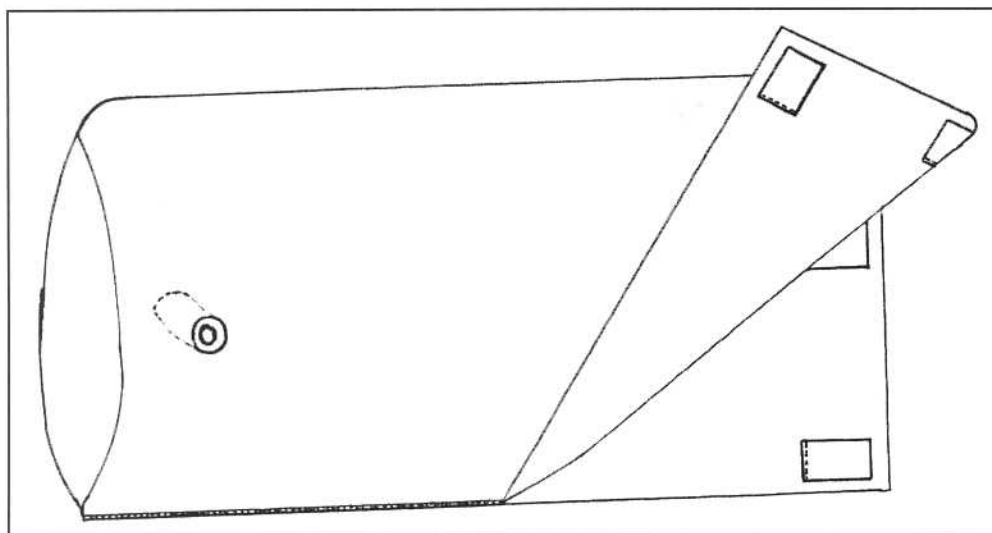
Ref. No	Date	Responsibility	Doc Issue	Page	No of pages
TMP 210	September 2005	TMD	1	6	11

## 10. Make

Illustrations are not to scale and are for guidance only, and unless inconsistent with the text, all measurements are nominal.

### 10.1 Bite arm

- ♦ to be a 60 cm width of outer material
  - lined with lining
  - and folded double
- ♦ a length of padding
  - of width 10 cm
  - so sewn centrally to the inside of the fold that the top end is 18 cm from the top of the arm and the lower end is 50 mm from the other end
- ♦ two lengths of padding
  - of width 14 cm
  - sewn to the arm (over the same length), one on each side of the first padding
- ♦ to be sewn together at the side edges of the arm
  - for a distance of 30 cm from the lower end
  - to have a 50 mm dart at the lower end of the folded side
- ♦ at the top end of the arm, to have five equidistantly spaced lengths of webbing
  - positioned on the inside
  - each sewn to the arm at the top end then turned over and sewn down at the lower end, to give a finished length of 60 mm
- ♦ to have a cylindrical bar
  - with a finished length of 10 cm
  - a diameter of 25 mm
  - of an acceptable plastics material
  - covered with PVC coated fabric
  - to be so positioned between the two side paddings that it is 90 mm from the lower end of the arm and 13 cm from the side seam
  - to be attached to the arm with two steel screws
    - > that are inserted from the outside of the arm to form a hand grip



## 11. Stitches and seams

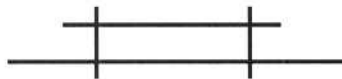
### 11.1 Stitches

Single needle lock stitch

### 11.2 Seams

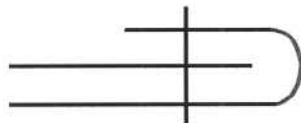
Seams shall be at least 10 mm wide

**Attaching of padding:** seam type SSau



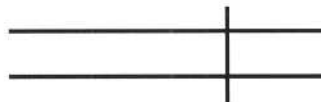
Superimpose a strip on a ply of material and seam with the appropriate number of rows of stitches.

**Ends of lining:** seam type SSbc



Superimpose two plies of material, turn the specified width at the edge of one ply over the edge of the second ply, and seam with the appropriate number of rows of stitches.

**Other seams:** seam type SSa-1



Superimpose two or more plies of material and seam with the appropriate number of rows of stitches positioned at the specified distance(s) from the aligned edges.

### 11.3 Number of stitches

**Seams:**  $20 \pm 2$  per 10 cm

## 12. Packing and marking

### 12.1 Packing

The bite arms to be:

- ♦ delivered in a commercially dry condition
- ♦ so packed that they will not be damaged in transit or in storage
- ♦ individually packed in a plastics envelope of suitable size and shape
- ♦ unless otherwise specified in the order or contract, acceptably packed for transportation in bulk containers

### 12.2 Marking

Each bulk container to have a label securely attached to the outside. This label to be visible when the containers are stacked and to provide the following information in legible and indelible marking:

- ♦ the manufacturer's name or trade mark or both
- ♦ the designation, i.e. "Bite arms (without visor)"
- ♦ the quantity
- ♦ the year of manufacture

### 12.3 Additional marking

When so required by the Tshwane Metro Police, bite arms, envelopes or bulk containers (or any combination of these) to bear information additional to that specified above.

Ref. No	Date	Responsibility	Doc Issue	Page	No of pages
TMP 210	September 2005	TMP	1	a	11

## 13. Normative references

The following standards contain provisions which, through reference in this text, constitute provisions of this specification. All standards are subject to revision and, since any reference to a standard is deemed to be a reference to the latest edition of a standard, parties to agreements based on this specification are encouraged to take steps to ensure the use of the most recent editions of the standards indicated below. Information on currently valid national and international standards may be obtained from Standards South Africa.

**SANS 1362**, *Sewing threads*.

**SANS 10371**, *Terms and definitions for clothing*.

Ref. No	Date	Responsibility	Doc Issue	Page	No of pages
TMD 210	September 2005	TMD	1	10	11



**Annex A**  
(Normative)

ORIGINAL

**Special conditions of tender**

**A-1** Unless otherwise stated, the South African Bureau of Standards shall be the inspecting authority.

**A-2** Three pre-production sample bite arms, shall have been inspected, tested and approved by the inspecting authority before bulk production is commenced. Each one of these samples shall be accompanied by a trim chart containing a sample of each component material (as given in 6) and the relevant certificates. It shall be the duty of the manufacturer to give adequate notice to the inspecting authority of the availability of these samples.

**A-3** The bite arms shall be subject to inspection during the course of manufacture. The inspector shall, during normal working hours, be given all reasonable facilities for carrying out his duties and shall have the right of entry into the contractor's factory and the factory or works of any subcontractor where work on bite arms supplied to this specification may be in progress.

**A-4** The contractor shall inspect the finished bite arms for compliance with the specification before submitting them to the inspecting authority for final inspection.

**A-5** Before acceptance, the bite arms shall have been inspected and tested by the inspecting authority and found to comply with the requirements of the specification.

Item 5 - 3.1.5.1- Nr 2 - Annexure E2 - Canine K9 Bite Arm Without Visor

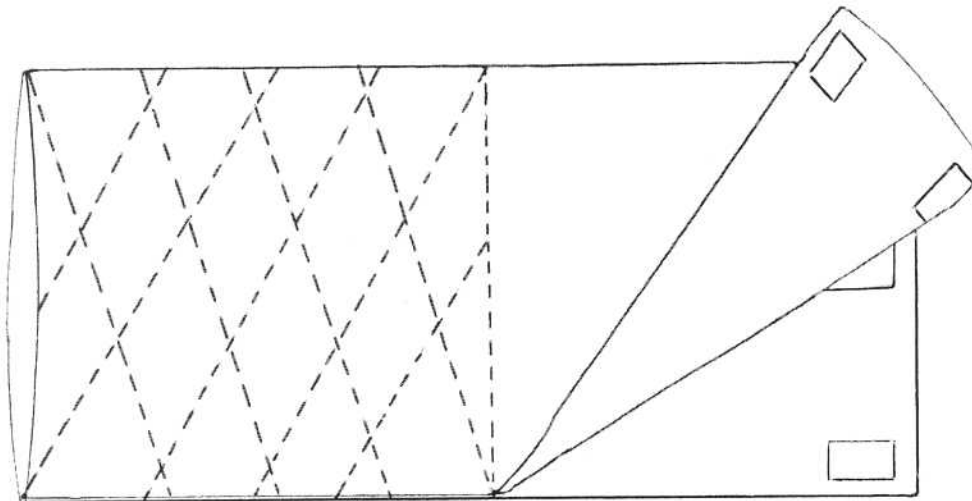
Ref. No	Date	Responsibility	Doc Issue	Page	No of pages
TMP 210	September 2005	TMP	1	11	11

**PRIVATE SPECIFICATION**

prepared for the

**TSHWANE METRO POLICE**

**BITE COVER, STRONG**



**TMP 212**  
**October 2005**

## 1. Scope

This specification covers the material, cut and make of bite covers for use by dog handling personnel of the Tshwane Metro Police.

## 2. Definitions

For the purpose of this specification the definitions given in SANS 10371 "Terms and definitions for clothing" and the following shall apply:

**Acceptable:** acceptable to the Tshwane Metro Police.

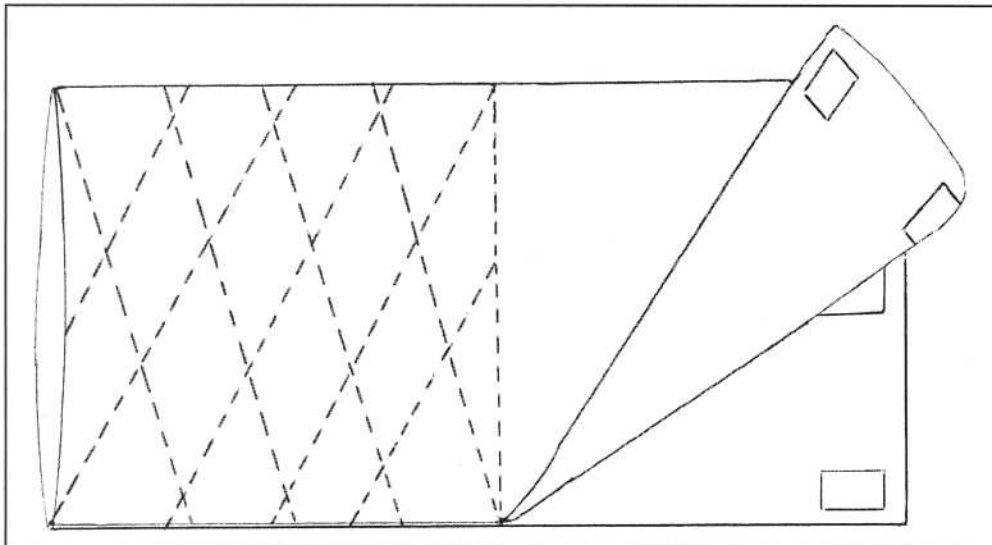
**Nominal:** subject to the tolerances normal to good manufacturing practice.

## 3. Style

- ♦ cylindrical shape
- ♦ padded
- ♦ quilted

Ref. No	Date	Responsibility	Doc Issue	Page	No of pages
TMP 212	October 2005	TMP	1	2	11

## 4. Illustration



Item 5 - 3.1.5.1- Nr 3 - Annexure E3 - Canine K9 Bite Cover Strong

Ref. No	Date	Responsibility	Doc Issue	Page	No of pages
TMP 212	October 2005	TMP	1	2	11

## 5. Materials - General

No materials will be supplied by the Tshwane Metro Police (unless otherwise specified in the order or contract).

- ◆ The materials specified in 6 and 7 are to be supplied and used by the manufacturer

A trim chart containing a sample of each component material (as given in 7) must accompany the pre-production samples

## 6. Outer material

Outer material to:

- ◆ be an acceptable 2/2 twill hessian fabric

## 7. Component materials

### 7.1 Lining

- ◆ an acceptable plain woven hessian fabric

### 7.2 Padding

- ◆ an acceptable felted material
- ◆ of nominal thickness 5 mm

### 7.3 Webbing strap

- ◆ an acceptable webbing strap
- ◆ of nominal width 35 mm

### 7.4 Interlining

- ◆ a double layer of an acceptable plain woven hessian fabric

### 7.5 Threads

- ◆ to comply with relevant requirements of SANS 1362 "Sewing threads"
- ◆ polyester-and-cotton core-spun,
  - ticket No. 20

Ref. No	Date	Responsibility	Doc Issue	Page	No of pages
TMP 212	October 2005	TMP	1	1	11

## 8. Workmanship

### The bite covers to be:

- ♦ cut and made with first-class workmanship throughout
- ♦ of uniform and acceptable make, colour and finish

### To be free from:

- ♦ defects, that affect their appearance or may affect their serviceability (or both)
- ♦ marks
- ♦ spots
- ♦ stains, incurred in the making-up

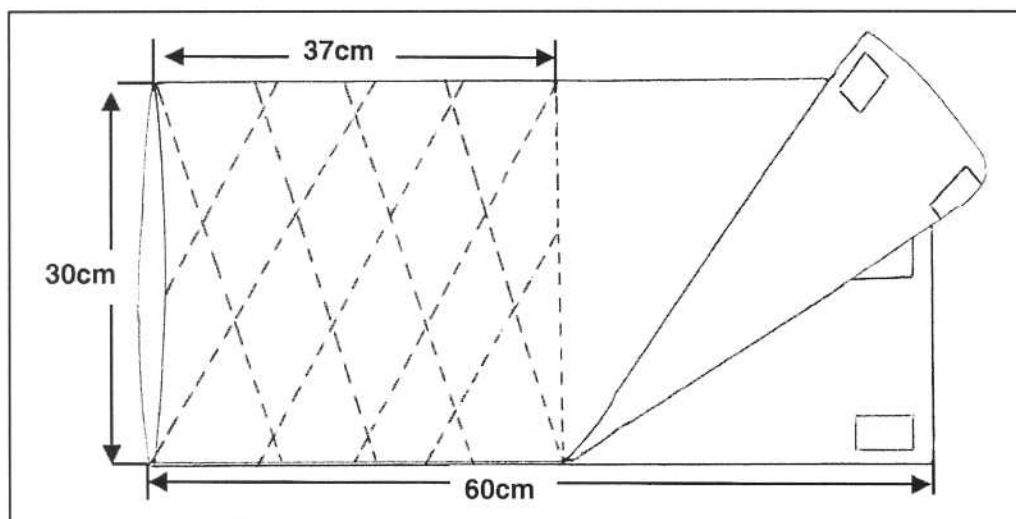
### Seams and stitches to be:

- ♦ smooth and uniform
- ♦ free from twists, pleats and puckers
- ♦ sufficiently extensible to avoid seam cracking and undue shrinkage in use

### Ends of sewing to be:

- ♦ trimmed and loose threads removed
- ♦ back-tacked if unsecured

## 9. Sizes



♦ bite covers to be made in one size only

Item 5 - 3.1.5.1- Nr 3 - Annexure E3 - Canine K9 Bite Cover Strong

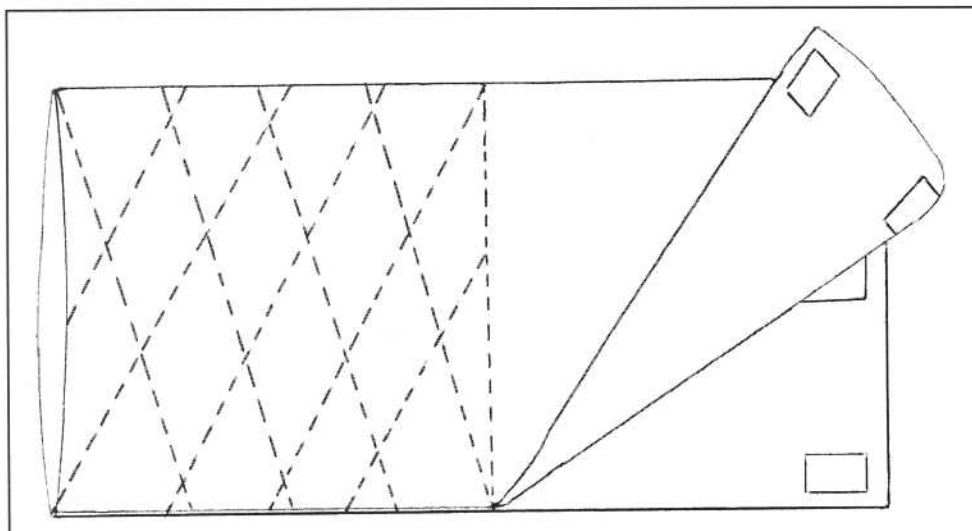
Ref. No	Date	Responsibility	Doc Issue	Page	No of pages
TMD 212	October 2005	TMD	1	6	11

## 10. Make

Illustrations are not to scale and are for guidance only, and unless inconsistent with the text, all measurements are nominal.

### 10.1 Bite covers

- ◆ to be a 60 cm width of outer material
  - lined with lining over its full length and width
  - interlined with interlining for a distance of 37 cm from the lower end, and to within 50 mm of each side edge
- ◆ interlining to contain padding
  - of length 37 cm
  - of width 34 cm
  - positioned centrally in the width of the bite cover
- ◆ to be quilted in a diamond pattern
  - with rows of stitching 80 mm apart, for a distance of 37 cm from the lower end
- ◆ side edges of the arm to be sewn together for a distance of 37 cm from the lower end
- ◆ to have webbing straps
  - five equidistantly spaced lengths
  - sewn to the top end
  - sewn on the inside, then turned over and sewn down at the lower end
    - > to give a finished length of 80 mm





## 11. Stitches and seams

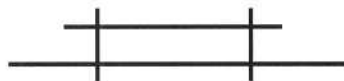
### 11.1 Stitches

Single needle lock stitch

### 11.2 Seams

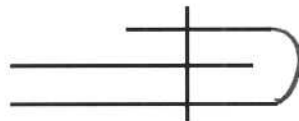
Seams shall be at least 10 mm wide

**Attaching of padding:** seam type SSau



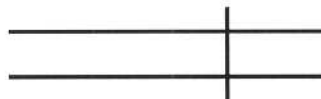
Superimpose a strip on a ply of material and seam with the appropriate number of rows of stitches.

**Ends of lining:** seam type SSbc



Superimpose two plies of material, turn the specified width at the edge of one ply over the edge of the second ply, and seam with the appropriate number of rows of stitches.

**Other seams:** seam type SSa-1



Superimpose two or more plies of material and seam with the appropriate number of rows of stitches positioned at the specified distance(s) from the aligned edges.

### 11.3 Number of stitches

**Seams:**  $15 \pm 1$  per 10 cm

Ref. No	Date	Responsibility	Doc Issue	Page	No of pages
TMP 212	October 2005	TMP	1	6	11

## 12. Packing and marking

### 12.1 Packing

The bite covers to be:

- ♦ delivered in a commercially dry condition
- ♦ so packed that they will not be damaged in transit or in storage
- ♦ individually packed in a plastics envelope of suitable size and shape
- ♦ unless otherwise specified in the order or contract, acceptably packed for transportation in bulk containers

### 12.2 Marking

Each bulk container to have a label securely attached to the outside. This label to be visible when the containers are stacked and to provide the following information in legible and indelible marking:

- ♦ the manufacturer's name or trade mark or both
- ♦ the designation, i.e. "Bite covers, strong"
- ♦ the size designation
- ♦ the quantity
- ♦ the year of manufacture

### 12.3 Additional marking

When so required by the Tshwane Metro Police, bite covers, envelopes or bulk containers (or any combination of these) to bear information additional to that specified above.

Ref. No	Date	Responsibility	Doc Issue	Page	No of pages
TMP 212	October 2005	TMP	1	0	11

## 13. Normative references

The following standards contain provisions which, through reference in this text, constitute provisions of this specification. All standards are subject to revision and, since any reference to a standard is deemed to be a reference to the latest edition of a standard, parties to agreements based on this specification are encouraged to take steps to ensure the use of the most recent editions of the standards indicated below. Information on currently valid national and international standards may be obtained from Standards South Africa.

**SANS 1362**, *Sewing threads*.

**SANS 10371**, *Terms and definitions for clothing*.

Ref. No	Date	Responsibility	Doc Issue	Page	No of pages
TMP 212	October 2005	TMP	1	10	11

**Annex A**  
(Normative)

ORIGINAL

## **Special conditions of tender**

**A-1** Unless otherwise stated, the South African Bureau of Standards shall be the inspecting authority.

**A-2** Three pre-production sample bite covers, shall have been inspected, tested and approved by the inspecting authority before bulk production is commenced. Each one of these samples shall be accompanied by a trim chart containing a sample of each component material (as given in 7) and the relevant certificates. It shall be the duty of the manufacturer to give adequate notice to the inspecting authority of the availability of these samples.

**A-3** The bite covers shall be subject to inspection during the course of manufacture. The inspector shall, during normal working hours, be given all reasonable facilities for carrying out his duties and shall have the right of entry into the contractor's factory and the factory or works of any subcontractor where work on bite covers supplied to this specification may be in progress.

**A-4** The contractor shall inspect the finished bite covers for compliance with the specification before submitting them to the inspecting authority for final inspection.

**A-5** Before acceptance, the bite covers shall have been inspected and tested by the inspecting authority and found to comply with the requirements of the specification.

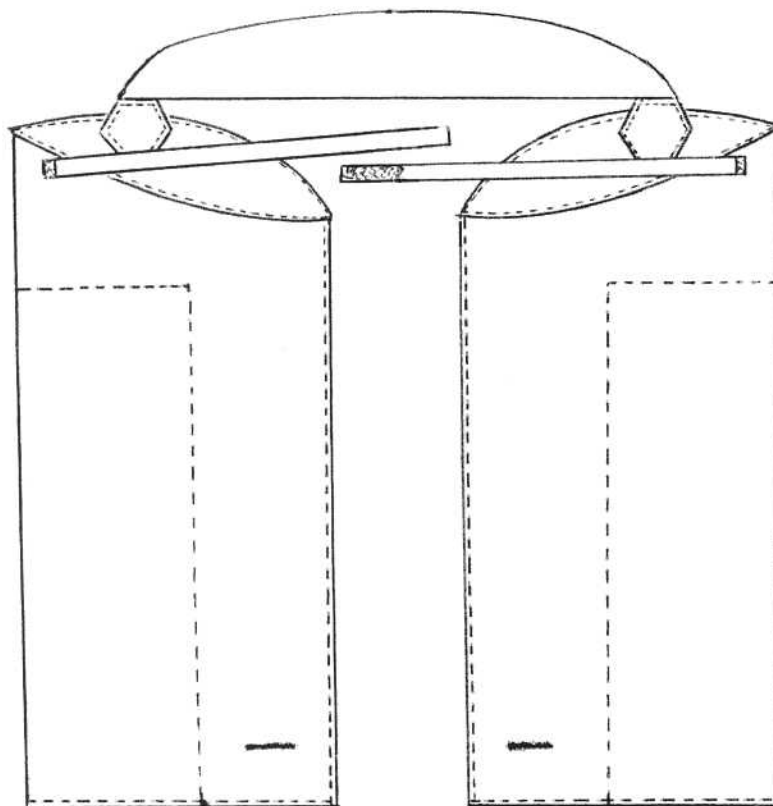
Ref. No	Date	Responsibility	Doc Issue	Page	No of pages
TMP 212	October 2005	TMP	1	11	11

**PRIVATE SPECIFICATION**

prepared for the

**TSHWANE METRO POLICE**

**DOUBLE BITE ARM, WITH YOKE**



**TMP 211**  
**September 2005**

## 1. Scope

This specification covers the material, cut and make of double bite arm, with yoke for dog handling personnel of the Tshwane Metro Police.

## 2. Definitions

For the purpose of this specification the definitions given in SANS 10371 "Terms and definitions for clothing" and the following shall apply:

**Acceptable:** acceptable to the Tshwane Metro Police.

**Nominal:** subject to the tolerances normal to good manufacturing practice.

## 3. Style

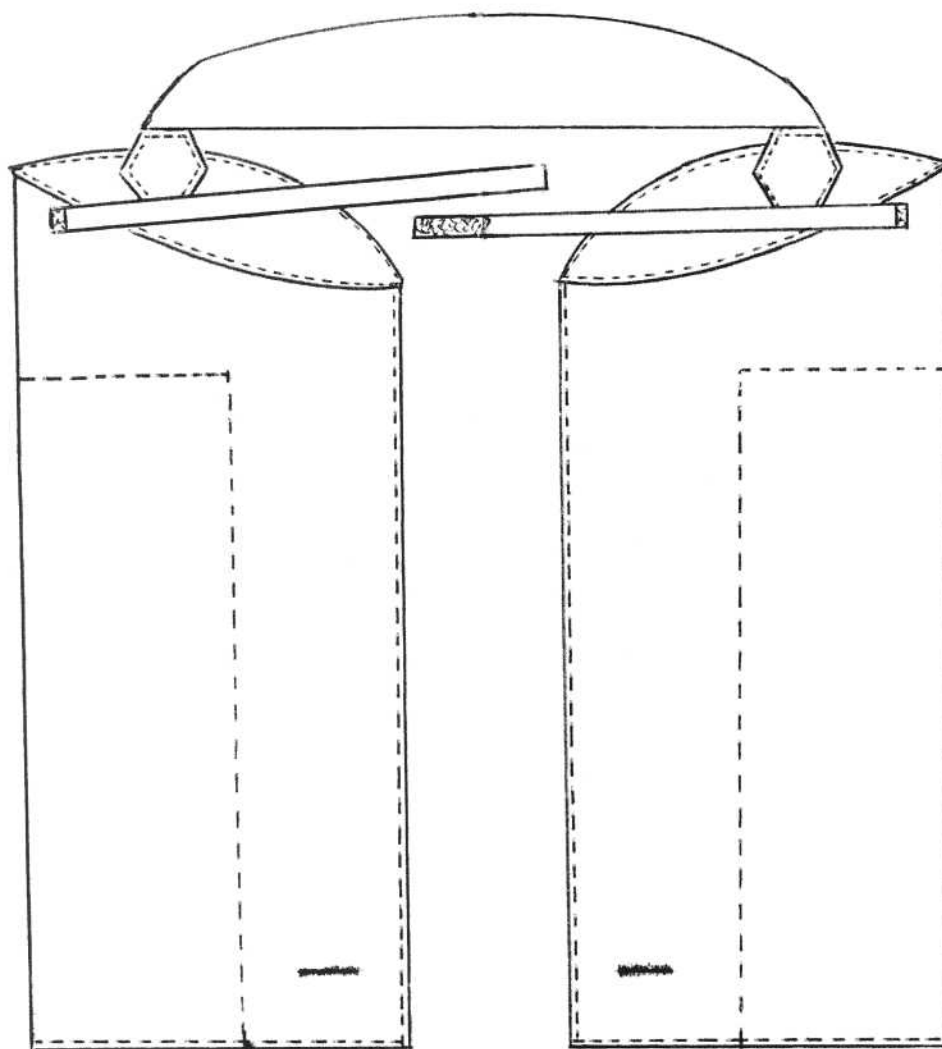
- ◆ each arm to be fully interlined with padding
- ◆ an extra double layer of padding
- ◆ webbing straps
- ◆ hand grips

Item 5 - 3.1.5.1- Nr 4 - Annexure E4 - Canine K9 Double Bite Arm with Yoke

Ref. No	Date	Responsibility	Doc Issue	Page	No of pages
TMP 211	September 2005	TMP	1	2	12

ORIGINAL

## 4. Illustration



Item 5 - 3.1.5.1- Nr 4 - Annexure E4 - Canine K9 Double Bite Arm with Yoke

Ref. No	Date	Responsibility	Doc Issue	Page	No of pages
TMP 211	September 2005	TMP	1	2	12

## 5. Materials - General

No materials will be supplied by the Tshwane Metro Police (unless otherwise specified in the order or contract).

- ♦ The materials specified in 6 and 7 are to be supplied and used by the manufacturer

A trim chart containing a sample of each component material (as given in 7) must accompany the pre-production samples

## 6. Outer material

Outer material to:

- ♦ be an acceptable plain weave hessian fabric

## 7. Component materials

### 7.1 Lining

- ♦ an acceptable woven fabric
- ♦ surface to be brushed

### 7.2 Padding

- ♦ a double layer of an acceptable non-woven hessian
- ♦ of nominal thickness 10 mm

### 7.3 Webbing

- ♦ an acceptable webbing strap
- ♦ of nominal width 25 mm

### 7.4 Touch and close fasteners

- ♦ to comply with the requirements of SANS 1823 "Touch and close fasteners"
- ♦ of finished width 25 mm

Ref. No	Date	Responsibility	Doc Issue	Page	No of pages
TMP 211	September 2005	TMP	1	4	12





## **7.5 Leather**

- ♦ an acceptable leather strap
- ♦ of finished width 25 mm
- ♦ of thickness 6 mm

## **7.6 Threads**

- ♦ to comply with relevant requirements of SANS 1362 "Sewing threads"
- ♦ polyester-and-cotton core-spun
  - ticket No. 20

Ref. No	Date	Responsibility	Doc Issue	Page	No of pages
TMP 211	September 2005	TMP	1	5	12

## 8. Workmanship

### The double bite arms to be:

- ◆ cut and made with first-class workmanship throughout
- ◆ of uniform and acceptable make, colour and finish

### To be free from:

- ◆ defects, that affect their appearance or may affect their serviceability (or both)
- ◆ marks
- ◆ spots
- ◆ stains, incurred in the making-up

### Seams and stitches to be:

- ◆ smooth and uniform
- ◆ free from twists, pleats and puckers
- ◆ sufficiently extensible to avoid seam cracking and undue shrinkage in use

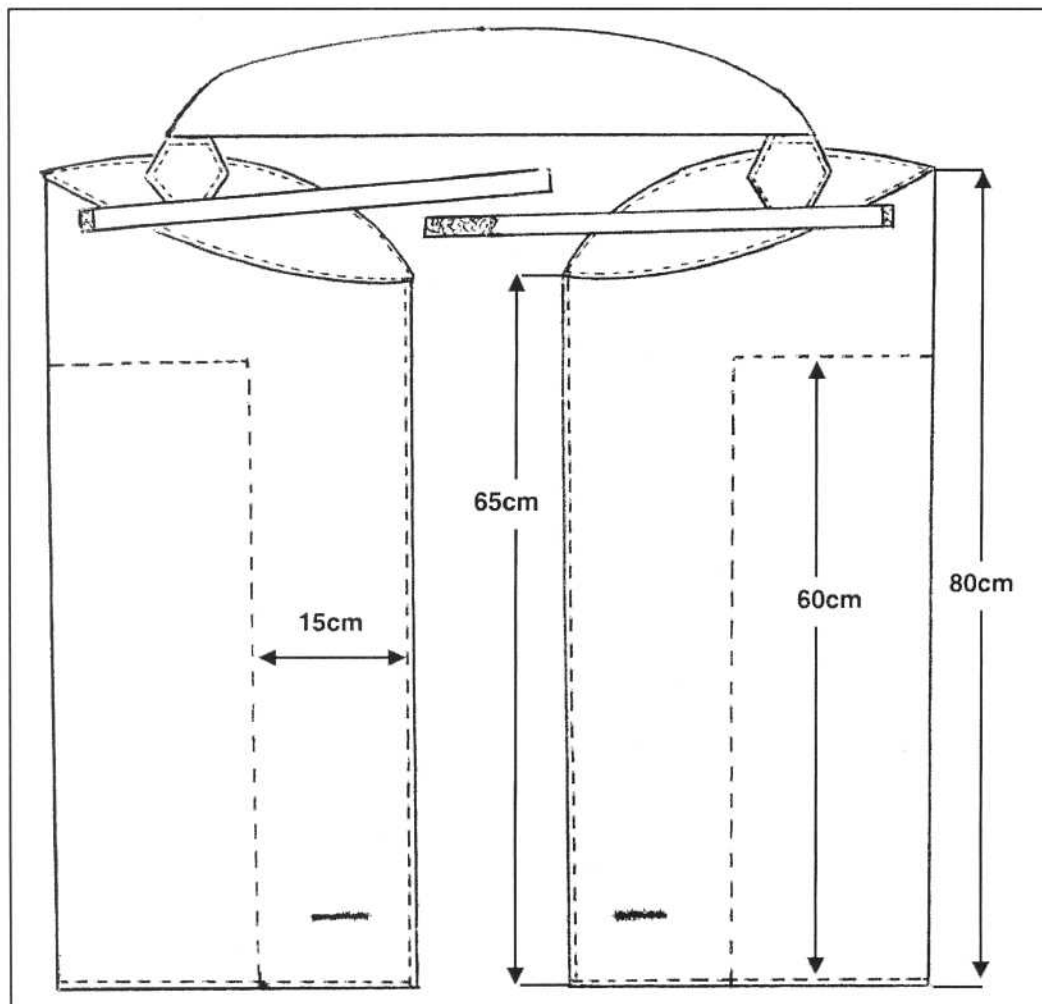
### Ends of sewing to be:

- ◆ trimmed and loose threads removed
- ◆ back-tacked if unsecured

Item 5 - 3.1.5.1- Nr 4 - Annexure E4 - Canine K9 Double Bite Arm with Yoke

Ref. No	Date	Responsibility	Doc Issue	Page	No of pages
TMP 211	September 2005	TMP	1	6	12

## 9. Sizes



- ♦ double bite arms to be made in one size only

Item 5 - 3.1.5.1- Nr 4 - Annexure E4 - Canine K9 Double Bite Arm with Yoke

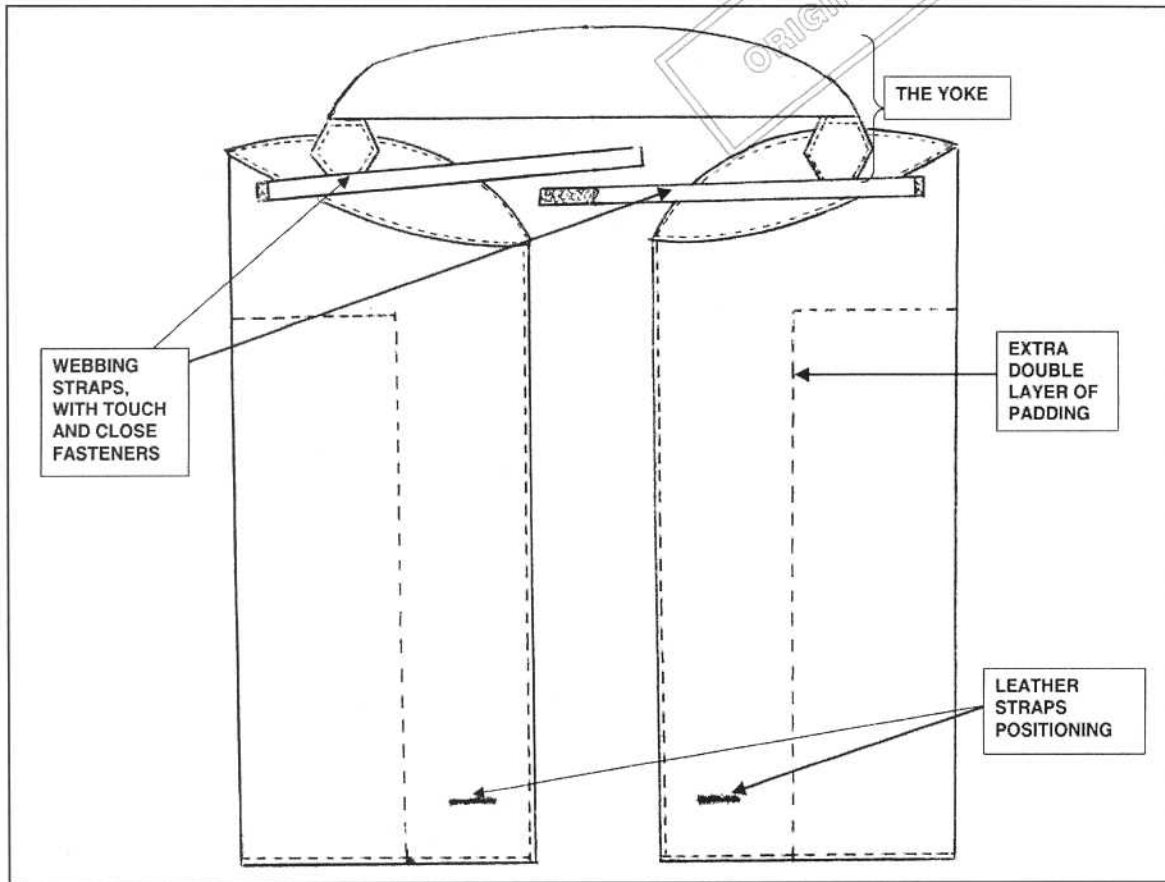
Ref. No	Date	Responsibility	Doc Issue	Page	No of pages
TMP 211	September 2005	TMP	1	7	10

## 10. Make

Illustrations are not to scale and are for guidance only, and unless inconsistent with the text, all measurements are nominal.

### 10.1 Double bite arms, with yoke

- ◆ of outer material
  - interlined with padding
  - lined with lining
  - of circumference 65 cm
- ◆ to have an extra double layer of padding
  - of width 35 cm
  - secured centrally in each arm
  - of finished length 60 cm from the bottom end of the arm
- ◆ a yoke
  - of finished length 63 cm
  - of finished depth 15 cm
  - to be sewn to the shaped section at the top of each arm
- ◆ to have a webbing strap
  - sewn to each arm, 10 cm forward of the front edge of the yoke
  - of finished length 21 cm
  - on the right arm to have a 10 cm length of the male part of touch and close fastener
    - > sewn to the underside of the strap
  - on the left arm to have a 10 cm length of the female part of touch and close fastener
    - > sewn on the outside of the strap
- ◆ to be fitted with a leather strap
  - of finished length 15 cm
  - of finished width 25 mm
  - and thickness of 6 mm
  - centrally secured in a tube of outer material of finished length 23 cm
- ◆ to have a tube
  - securely attached to the inside of each arm
  - through the lining, the padding and the outer material to form a hand grip, that each end is 90 mm either side of the seam closing the side of the arm and 90 mm from the seam closing the end of the arm



## 11. Stitches and seams

### 11.1 Stitches

Single needle lock stitch

### 11.2 Seams

Seams shall be at least 10 mm wide

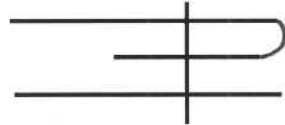
**Attaching of padding and yoke:** seam type SSau



Superimpose a strip on a ply of material and seam with the appropriate number of rows of stitches.

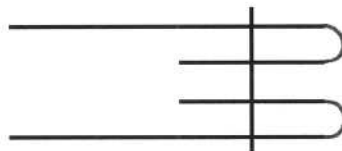
Ref. No	Date	Responsibility	Doc Issue	Page	No of pages
TMP 211	September 2005	TMP	1	6	12

**Attaching of lining:** seam type SSb



Turn in the specified width at the edge of one ply of material, superimpose it on a second ply, and seam through the turned edge with the appropriate number of rows of stitches.

**Other seams:** seam type SSc



Superimpose two plies of material, turn in the specified width at the edge of each ply and seam through the turned edges with the appropriate number of rows of stitches (positioned at the specified distance (s) from the edges).

## 11.3 Number of stitches

**Seams:**  $20 \pm 2$  per 10 cm

# 12. Packing and marking

## 12.1 Packing

The double bite arms to be:

- ◆ delivered in a commercially dry condition
- ◆ so packed that they will not be damaged in transit or in storage
- ◆ individually packed in a plastics envelope of suitable size and shape
- ◆ unless otherwise specified in the order or contract, acceptably packed for transportation in bulk containers

Item 5 - 3.1.5.1- Nr 4 - Annexure E4 - Canine K9 Double Bite Arm with Yoke

Ref. No	Date	Responsibility	Doc Issue	Page	No of pages
TMP 211	September 2005	TMP	1	10	12

## **12.2 Marking**

Each bulk container to have a label securely attached to the outside. This label to be visible when the containers are stacked and to provide the following information in legible and indelible marking:

- ♦ the manufacturer's name or trade mark or both
- ♦ the designation, i.e. "Double bite arms, with yoke"
- ♦ the quantity
- ♦ the year of manufacture

## **12.3 Additional marking**

When so required by the Tshwane Metro Police, bite arms, envelopes or bulk containers (or any combination of these) shall bear information additional to that specified above.

Item 5 - 3.1.5.1- Nr 4 - Annexure E4 - Canine K9 Double Bite Arm with Yoke

Ref. No	Date	Responsibility	Doc Issue	Page	No of pages
TMP 211	September 2005	TMP	1	11	12



## 13. Normative references

The following standards contain provisions which, through reference in this text, constitute provisions of this specification. All standards are subject to revision and, since any reference to a standard is deemed to be a reference to the latest edition of a standard, parties to agreements based on this specification are encouraged to take steps to ensure the use of the most recent editions of the standards indicated below. Information on currently valid national and international standards may be obtained from Standards South Africa.

**SANS 1362**, *Sewing threads*.

**SANS 1823**, *Touch and close fasteners*.

**SANS 10371**, *Terms and definitions for clothing*.

Item 5 - 3.1.5.1- Nr 4 - Annexure E4 - Canine K9 Double Bite Arm with Yoke

Ref. No	Date	Responsibility	Doc Issue	Page	No of pages
TMP 211	September 2005	TMP	1	12	12



**Annex A**  
(Normative)

ORIGINAL

**Special conditions of tender**

**A-1** Unless otherwise stated, the South African Bureau of Standards shall be the inspecting authority.

**A-2** Three pre-production sample double bite arms, shall have been inspected, tested and approved by the inspecting authority before bulk production is commenced. Each one of these samples shall be accompanied by a trim chart containing a sample of each component material (as given in 7) and the relevant certificates. It shall be the duty of the manufacturer to give adequate notice to the inspecting authority of the availability of these samples.

**A-3** The double bite arms shall be subject to inspection during the course of manufacture. The inspector shall, during normal working hours, be given all reasonable facilities for carrying out his duties and shall have the right of entry into the contractor's factory and the factory or works of any subcontractor where work on double bite arms supplied to this specification may be in progress.

**A-4** The contractor shall inspect the finished double bite arms for compliance with the specification before submitting them to the inspecting authority for final inspection.

**A-5** Before acceptance, the double bite arms shall have been inspected and tested by the inspecting authority and found to comply with the requirements of the specification.

Item 5 - 3.1.5.1- Nr 4 - Annexure E4 - Canine K9 Double Bite Arm with Yoke

Ref. No	Date	Responsibility	Doc Issue	Page	No of pages
TMP 011	September 2005	TMP	1	12	12

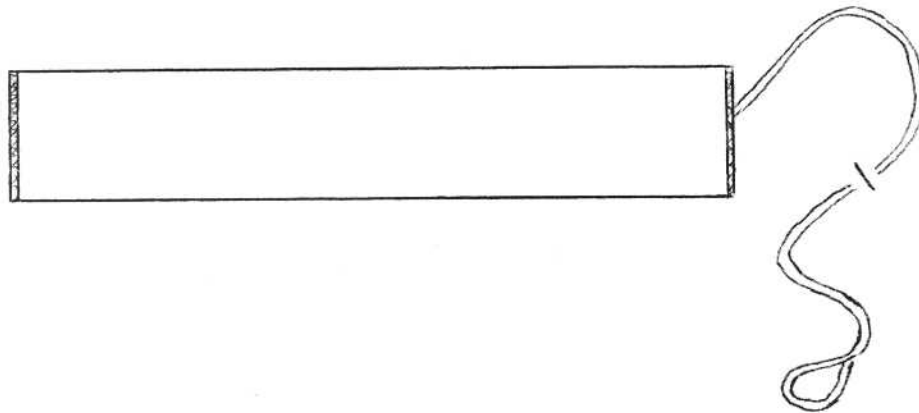
Item 5 - 3.1.5.1- Nr 5 - Annexure E5 - Canine K9 Sausage 25cm

**PRIVATE SPECIFICATION**

prepared for the

**TSHWANE METRO POLICE**

**SAUSAGE, 25 CM**



**TMP 213**  
**September 2005**

## 1. Scope

This specification covers the material and make of training sausages for use by dog handling personnel of the Tshwane Metro Police.

## 2. Definitions

For the purpose of this specification the definitions given in SANS 10371 "Terms and definitions for clothing" and the following shall apply:

**Acceptable:** acceptable to the Tshwane Metro Police.

**Nominal:** subject to the tolerances normal to good manufacturing practice.

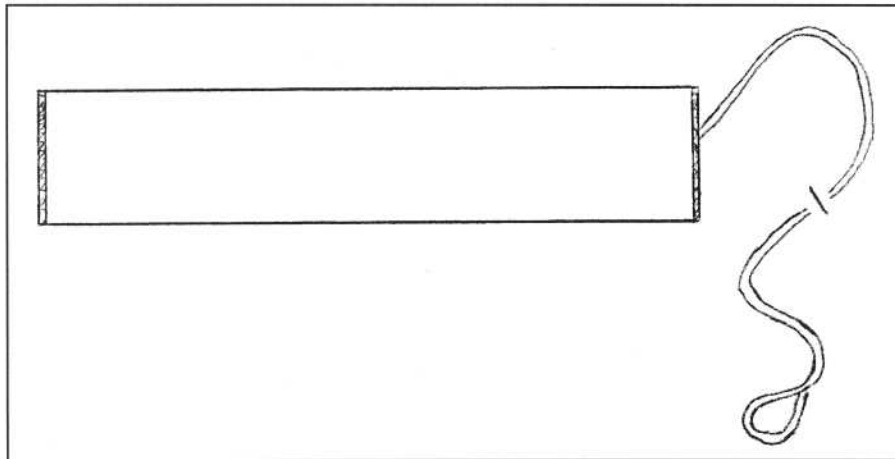
## 3. Style

- ♦ fully padded
- ♦ one end with rope
- ♦ shape of a sausage

Item 5 - 3.1.5.1- Nr 5 - Annexure E5 - Canine K9 Sausage 25cm

Ref. No	Date	Responsibility	Doc Issue	Page	No of pages
TMP 213	September 2005	TMP	1	2	11

## 4. Illustration



Item 5 - 3.1.5.1- Nr 5 - Annexure E5 - Canine K9 Sausage 25cm

Ref. No	Date	Responsibility	Doc Issue	Page	No of pages
TMD 213	September 2005	TMD	1	2	11

## 5. Materials - General

No materials will be supplied by the Tshwane Metro Police (unless otherwise specified in the order or contract).

- ♦ The materials specified in 6 and 7 are to be supplied and used by the manufacturer

A trim chart containing a sample of each component material (as given in 7) must accompany the pre-production samples

## 6. Outer material

Outer material to:

- ♦ be an acceptable 3/1 twill hessian fabric

## 7. Component materials

### 7.1 Padding

- ♦ an acceptable foam backed wadding
- ♦ of nominal thickness 10 mm

### 7.2 Rope

- ♦ an acceptable plaited polyethelene
- ♦ of nominal diameter 5 mm

### 7.3 Threads

- ♦ to comply with relevant requirements of SANS 1362 "Sewing threads"
- ♦ colour to be an acceptable match to the colour of the material with which they are used
- ♦ polyester-and-cotton core-spun
  - ticket No. 20

## 8. Workmanship

### The sausages to be:

- ♦ cut and made with first-class workmanship throughout
- ♦ of uniform and acceptable make, colour and finish

### To be free from:

- ♦ defects, that affect their appearance or may affect their serviceability (or both)
- ♦ marks
- ♦ spots
- ♦ stains, incurred in the making-up

### Seams and stitches to be:

- ♦ smooth and uniform
- ♦ free from twists, pleats and puckers
- ♦ sufficiently extensible to avoid seam cracking and undue shrinkage in use

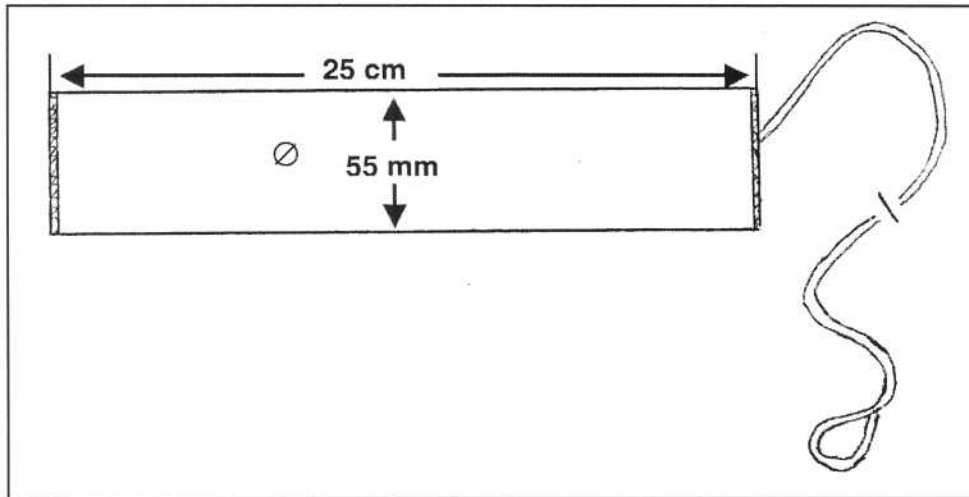
### Ends of sewing to be:

- ♦ trimmed and loose threads removed
- ♦ back-tacked if unsecured

Item 5 - 3.1.5.1- Nr 5 - Annexure E5 - Canine K9 Sausage 25cm

Ref. No	Date	Responsibility	Doc Issue	Page	No of pages
TMP 213	September 2005	TMP	1	5	11

## 9. Sizes



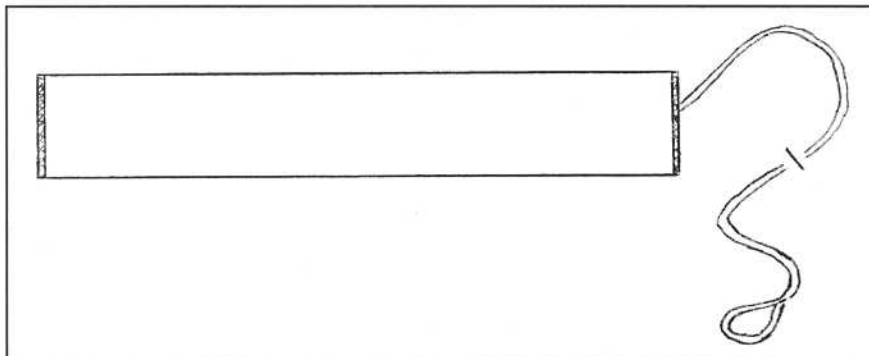


## 10. Make

Illustrations are not to scale and are for guidance only, and unless inconsistent with the text, all measurements are nominal.

### 10.1 Sausage

- ♦ be a piece of outer material
  - of nominal width 16 cm
  - doubled and seamed down the side and completely filled with padding that is rolled into a cylindrical shape to form the shape of the sausage
  - the ends to be seamed closed and one end to be centrally secured and one end to have a rope
- ♦ rope
  - to be inserted on the full length of the sausage
    - > through the padding
  - free section to be of finished length 2 m
    - > after the free end has been securely spliced or knotted to form a loop of 25 cm



## 11. Stitches, seams and stitchings

### 11.1 Stitches

Single needle lock stitch

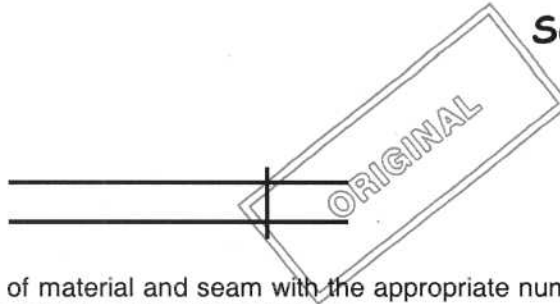
### 11.2 Seams

Seams to be at least 10 mm wide

Ref. No	Date	Responsibility	Doc Issue	Page	No of pages
TMP 213	September 2005	TMP	1	7	11



**Side seam:** seam type SSa



Superimpose two or more plies of material and seam with the appropriate number of rows of stitches positioned at the specified distance(s) from the aligned edges.

**Other seams:** seam type SSc-2



Superimpose two plies of material, turn in the specified width at the edge of each ply and seam through the turned edges with the appropriate number of rows of stitches (positioned at the specified distance(s) from the edges).

## 11.3 Number of stitches

**Seams:**  $20 \pm 2$  per 10 cm

# 12. Packing and marking

## 12.1 Packing

**The sausages to be:**

- ◆ delivered in a commercially dry condition
- ◆ so packed that they will not be damaged in transit or in storage
- ◆ individually packed in a plastics envelope of suitable size and shape
- ◆ unless otherwise specified in the order or contract, acceptably packed for transportation in bulk containers

## 12.2 Marking

Each bulk container to have a label securely attached to the outside. This label to be visible when the containers are stacked and to provide the following information in legible and indelible marking:

- ◆ the manufacturer's name or trade mark or both
- ◆ the designation, i.e. "Sausages, 25 cm"
- ◆ the quantity
- ◆ the year of manufacture

Ref. No	Date	Responsibility	Doc Issue	Page	No of pages
TMP 213	September 2005	TMP	1	8	11

### **12.3 Additional marking**

When so required by the Tshwane Metro Police, sausages, envelopes or bulk containers (or any combination of these) to bear information additional to that specified above.



Item 5 - 3.1.5.1- Nr 5 - Annexure E5 - Canine K9 Sausage 25cm

Ref. No	Date	Responsibility	Doc Issue	Page	No of pages
TMD 213	September 2005	TMD	1	0	11

## 13. Normative references

The following standards contain provisions which, through reference in this text, constitute provisions of this specification. All standards are subject to revision and, since any reference to a standard is deemed to be a reference to the latest edition of a standard, parties to agreements based on this specification are encouraged to take steps to ensure the use of the most recent editions of the standards indicated below. Information on currently valid national and international standards may be obtained from Standards South Africa.

**SANS 1362**, *Sewing threads*.

**SANS 10371**, *Terms and definitions for clothing*.

Ref. No	Date	Responsibility	Doc Issue	Page	No of pages
TMP 213	September 2005	TMP	1	10	11

**Annex A**  
(Normative)

ORIGINAL

## **Special conditions of tender**

**A-1** Unless otherwise stated, the South African Bureau of Standards shall be the inspecting authority.

**A-2** Three pre-production sample sausages, shall have been inspected, tested and approved by the inspecting authority before bulk production is commenced. Each one of these samples shall be accompanied by a trim chart containing a sample of each component material (as given in 7) and the relevant certificates. It shall be the duty of the manufacturer to give adequate notice to the inspecting authority of the availability of these samples.

**A-3** The sausages shall be subject to inspection during the course of manufacture. The inspector shall, during normal working hours, be given all reasonable facilities for carrying out his duties and shall have the right of entry into the contractor's factory and the factory or works of any subcontractor where work on sausages supplied to this specification may be in progress.

**A-4** The contractor shall inspect the finished sausages for compliance with the specification before submitting them to the inspecting authority for final inspection.

**A-5** Before acceptance, the sausages shall have been inspected and tested by the inspecting authority and found to comply with the requirements of the specification.

Ref. No	Date	Responsibility	Doc Issue	Page	No of pages
TMP 213	September 2005	TMP	1	11	11