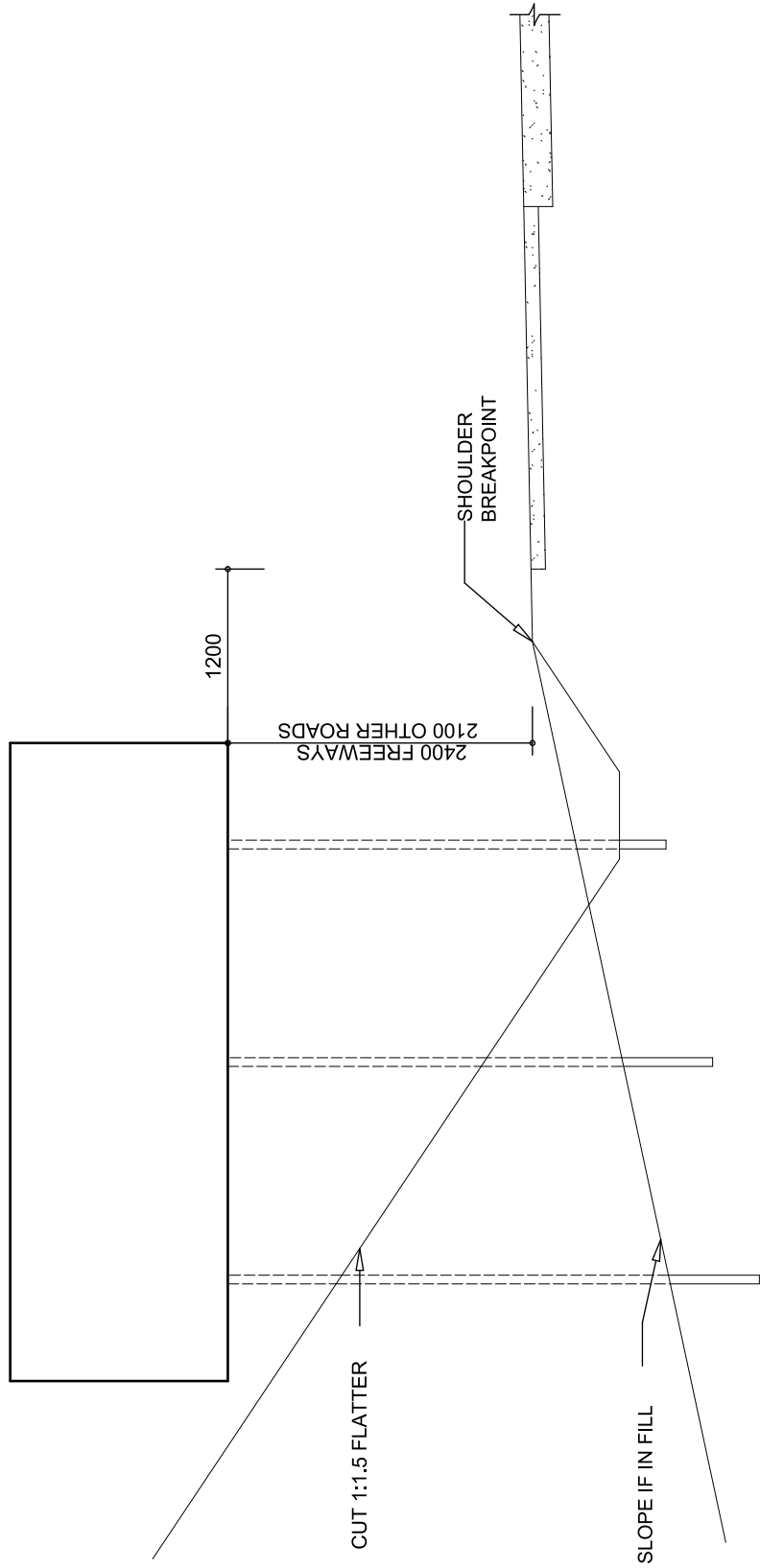
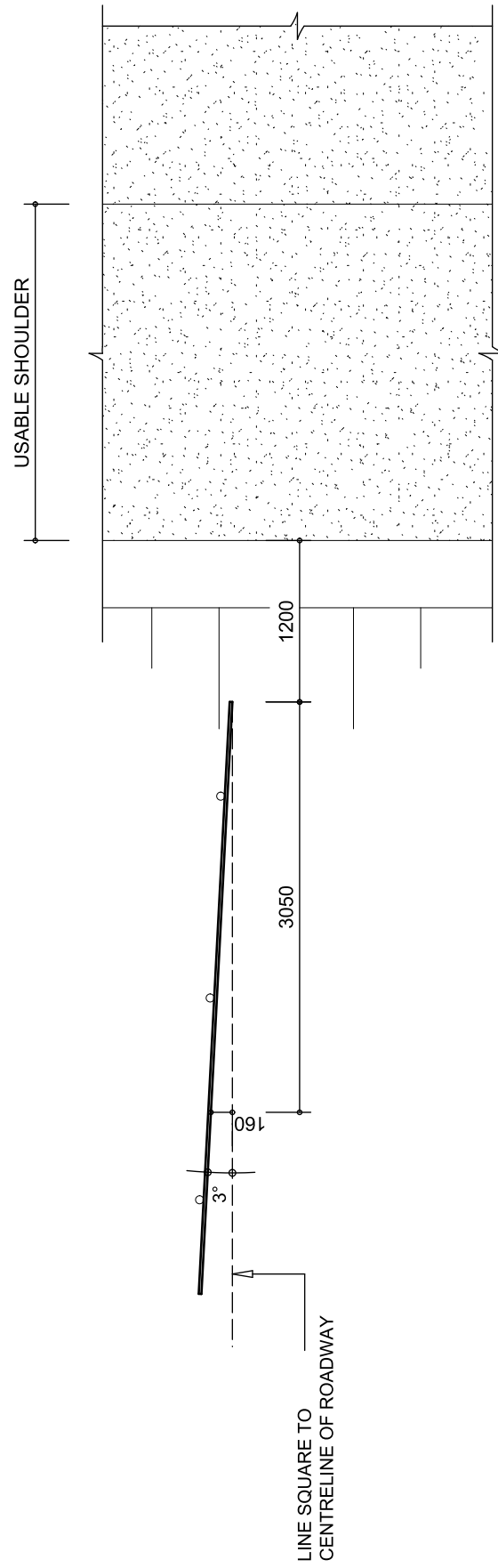


SHOULDER (NO KERB LINE)

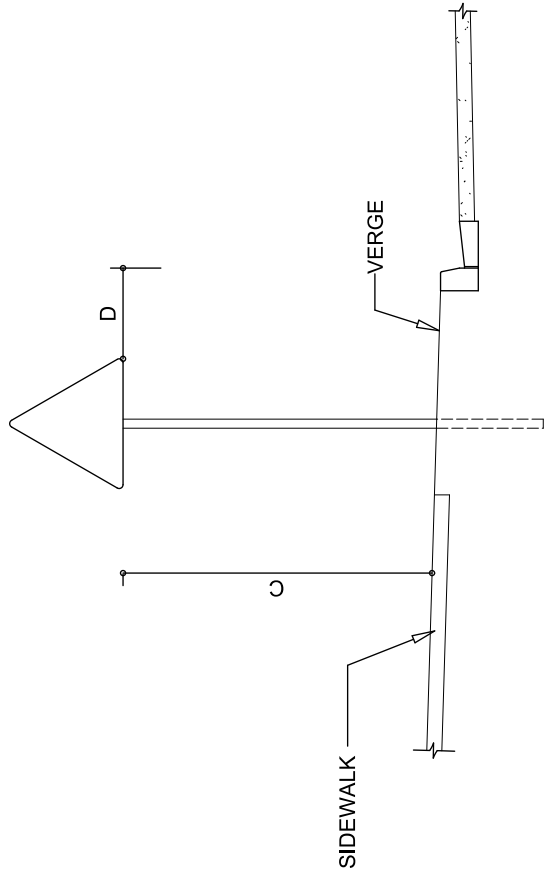


ELEVATION

	MAXIMUM	PREFERRED	MINIMUM
A	2400	2100	750
B	1800	900	600
C	2400	2100	750
D	-	600	300



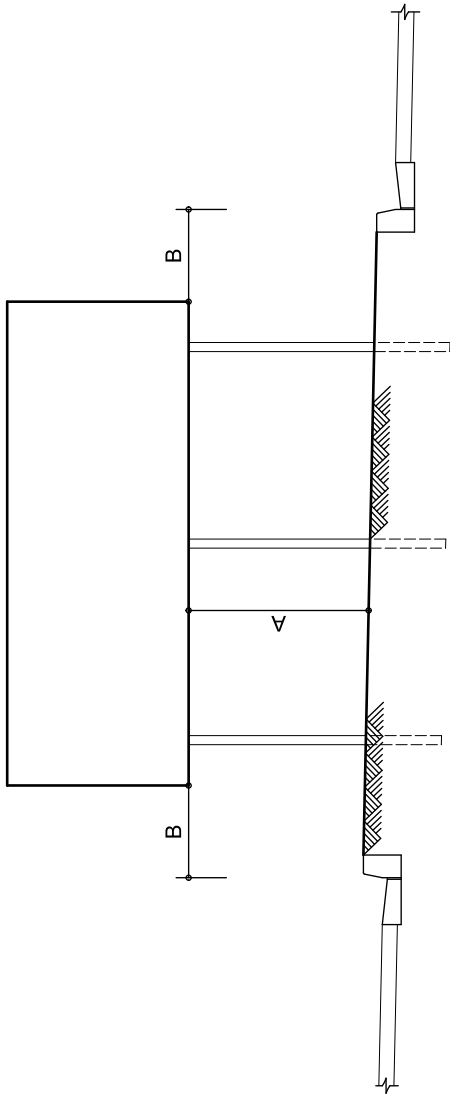
GROUND-MOUNTED SHOULDER SIGN



KERB

NOTE:
IF THE SIDEWALK IS AGAINST THE KERB THEN PLACE THE SIGN BEHIND THE SIDEWALK.

GROUND-MOUNTED GENERAL CASES



PLAN

GROUND-MOUNTED GORE SIGN

LIST OF DRAWING:

CLEARANCES DRAWING No. ER 2203/117.
SUPPORTS AND FOUNDATIONS - GENERAL DETAILS - DRAWING No. ER 2203/118.
SUPPORTS AND FOUNDATIONS - DETERMINATION OF SIZES - DRAWING No. ER 2203/119.
DETAIL OF ROAD SIGN FACE - DRAWING No. ER 2203/120.
DETAIL OF ROAD SIGN PROFILE AND JOINT - DRAWING No. ER 2203/121.
DETAIL OF SMALLER ROAD SIGNS - DRAWING No. ER 2203/122.

NOTE:

INFORMATION SHOWN ON THIS DRAWING IS REPRODUCED FROM SARTSM - JUNE 1999

[illegible]