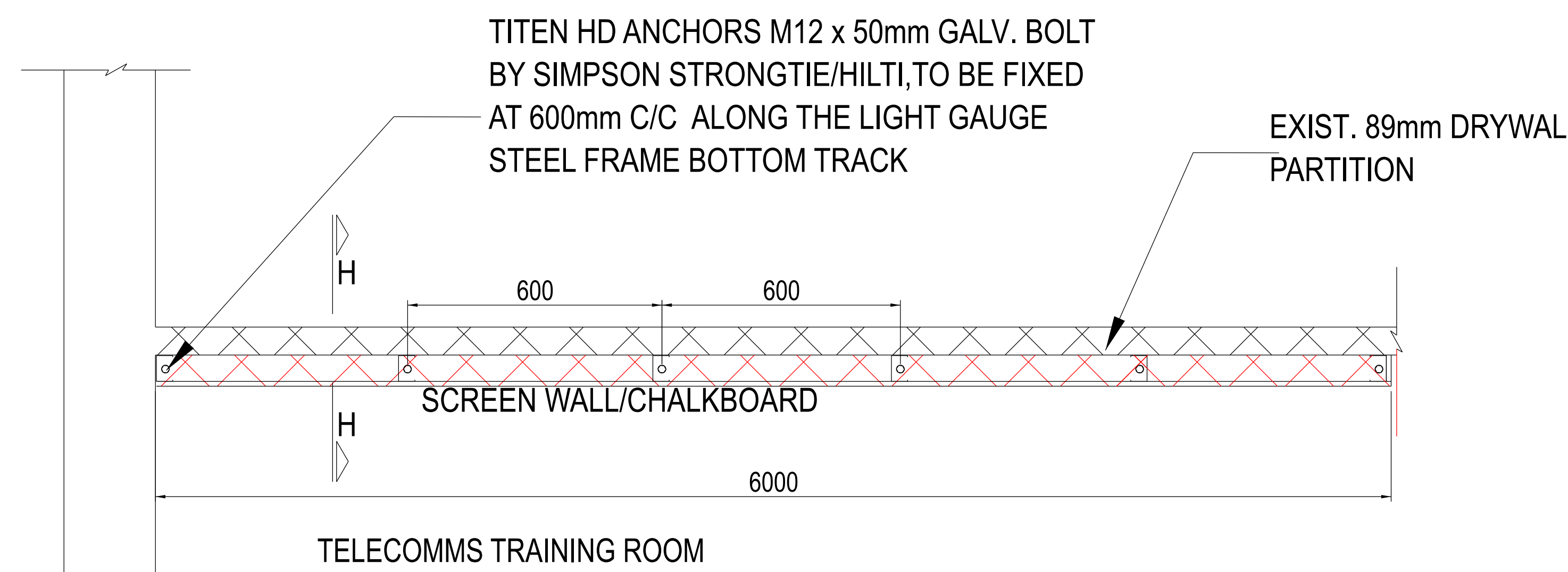


1 2 3 4 5 6 7 8 9 10 11 12

A
B
C
D
E
F
G
H



LIGT GAUGE STEEL FRAME DETAIL

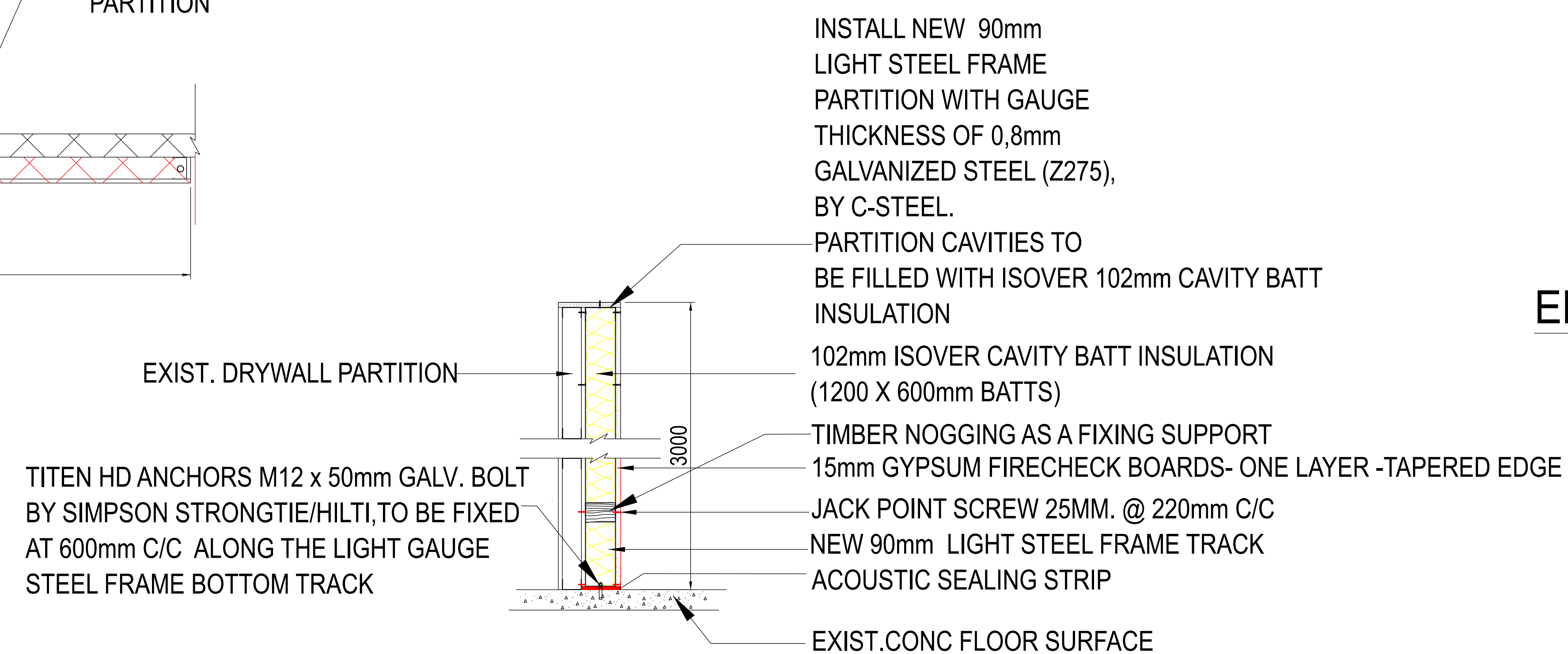
1:25

LIGHT GAUGE STEEL FRAME

- MATERIALS:**
 LIGHT STEEL FRAME :90X41x0.8mm (Z275) GALV STEEL STUDS,
 NOGGINGS & TRACKS - LOAD BEARING
 15mm GYPSUM FIRECHECK BOARDS- ONE LAYER -TAPERED EDGE
 ADHESIVE SEALING STRIP
 25mm JACK POINT SCREWS
 JOINTING PLASTER
 45m FIBA TAPE
 102mm ISOVER CAVITY BATTS INSULATION
 TITEN HD ANCHOR BOLTS
 DRYWALL CORNER BEADS
 THICKNESS :105mm = 90mm WALL PANEL + ONE LAYER OF 15mm GYPSUM BOARD
 90mm LIGHT STEEL FRAME WALL PANEL(PRE-ASSEMBLED)
 15mm GYPSUM FIRECHECK BOARDS-TAPERED-EDGE RHINO

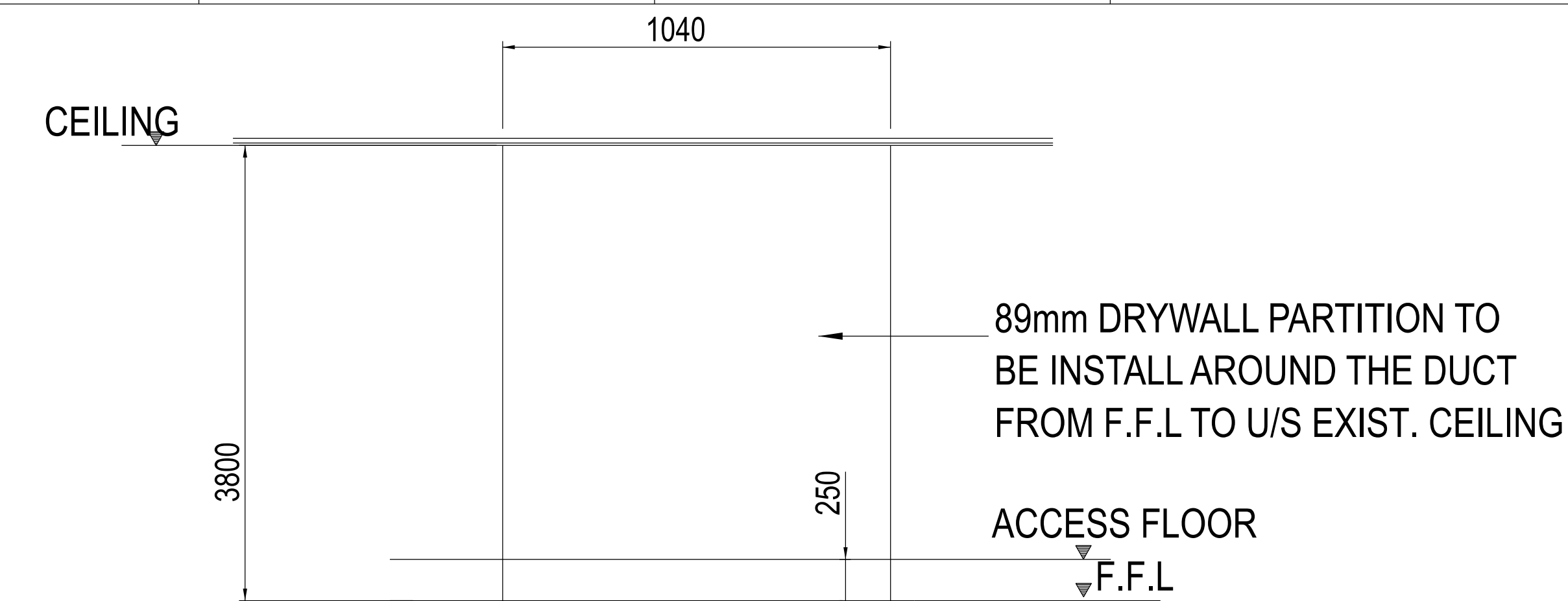
APPLICATION

SET LIGHT STEEL FRAME PANEL(PRE -ASSEMBLED AS A FULL WALL)
 ONTO THE FLOOR AND MARK WITH CONSTRUCTION PENCIL POSITIONS OF
 THE ANCHOR BOLTS.
 REMOVE THE WALL PANEL AFTER MARKING.
 PRE DRILL THE HOLES AT 600mm C/C,BLOW OUT THE DUST
 PLACE ADHESIVE SEALING STRIP ALONG THE BOTTOM TRACK OF THE WALL FRAME.
 POSITION WALL PANEL FOR INSTALLATION ENSURING LEVELING & SQUIRENESS,USING
 STEEL SQUARE RULER AND SPIRIT LEVEL.
 WHEN ALL IS GOOD, INSERT ANCHOR PLUGS/SPRAY ANCHOR FOAM.
 PLACE ANCHOR BOLTS AND DRILL THEM IN,UNTIL THE WALL IS WELL SECURED.DO THE SAME
 ALONG THE VERTICAL BRICK WALL.
 USE 25mm JACK POINT SCREWS TO SECURE THE WALL AGAINST THE EXIST DRYWALL.
 IF THERE WILL BE A TV SCREEN/CHALKBOARDS TO BE FIXED ONTO THE WALL,THEN MEASURE
 THEIR SIZES AND MARK POSITIONS WHERE REQUIRED.ONCE DONE,THEN INSERT TIMBER NOGGINS
 WHERE FIXING IS REQUIRED,TO ENSURE SUPPORT .
 AFTER THE TIMBER NOGGINS ARE FIXED IN POSITION,THEN INSERT
 102mm CAVITY BATT INSULATION BETWEEN STEEL FRAME CAVITIES.
 INSTALL ANY ELECTRICAL WIRING AS WELL IF REQUIRED.
 WHEN ALL IS GOOD,THEN CLOSE THE FRAME WITH 15mm GYPSUM FIRECHECK BOARDS
 POSITION THE BOARD EITHER VERTICAL OR HORIZONTAL,FIX BOARDS ONTO THE WALL FRAME USING
 25mm JACK POINT SCREWS AT 220mm C/C ALONG THE VERTICAL LIGHT STEEL FRAME STUDS.
 AFTER THE BOARDS ARE FULLY SECURED ON THE WALL FRAME,APPLY FIBATAPE ALONG THE BOARD
 JOINTS AND SEAL THE JOINTS BETWEEN THE BOARDS AND AROUND THE SCREW HEADS WITH
 JOINTING PLASTER
 ALLOW JOINTING PLASTER TO DRY AND USE SANDING PAPER TO SAND OFF THE ROUGHNESS OF THE DRY
 PLASTER UNTIL SMOOTH,TO ENSURE GOOD AESTHETICS.
 APPLY PRIMER AND 2 COATS OF PAINT TO MATCH EXISTING COLOUR

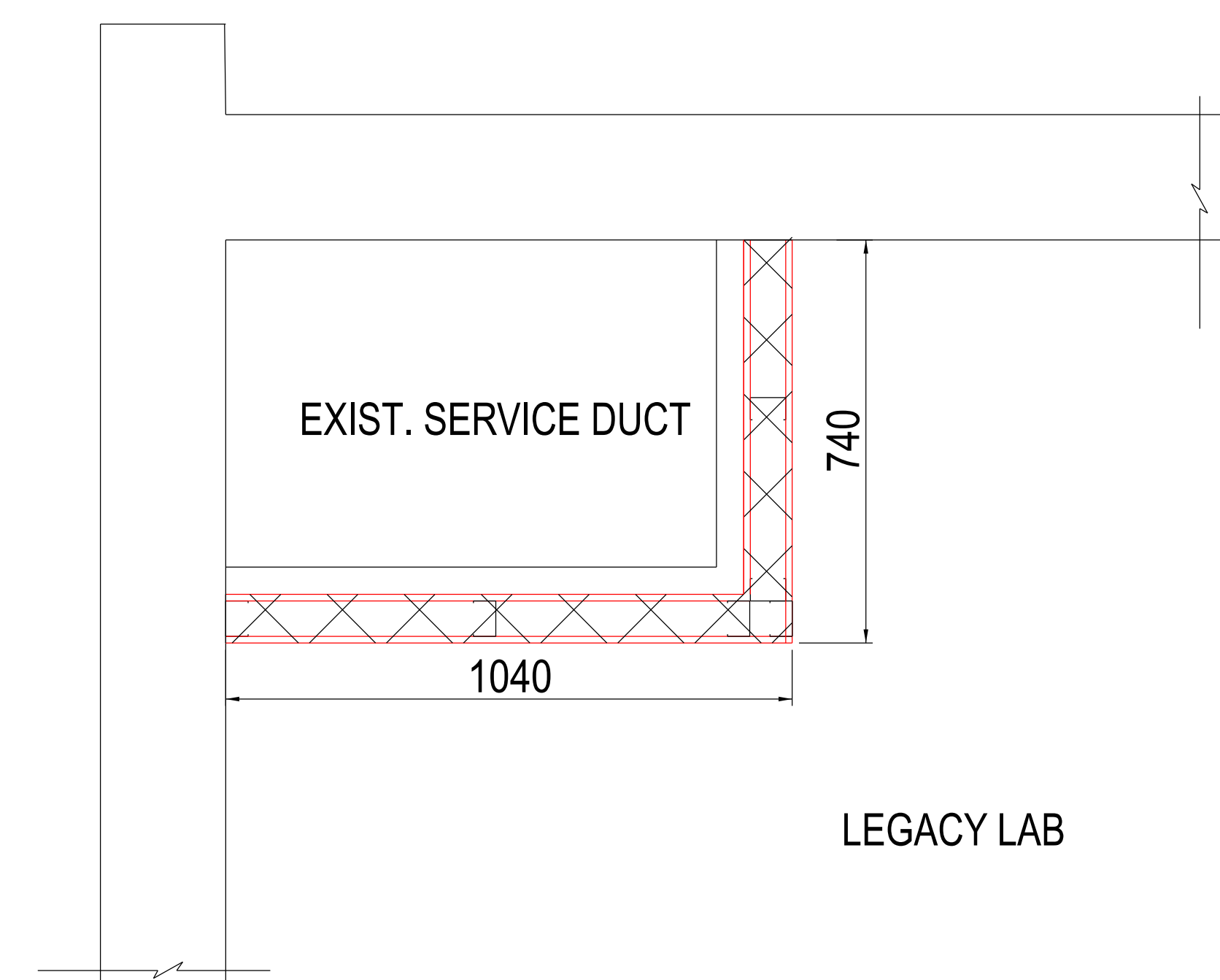


SECTION H-H (DRYWALL & LIGHT STEEL FRAME DRY-LINNING DETAIL)

1:20



ELEVATION ON FRONT (EXIST. SERVICE DUCT)



EXIST. SERVICE DUCT DETAIL-PLAN

1:20

DRYWALL

DRYWALL MATERIALS:

- STEEL STUD DRYWALL - NON LOAD BEARING 12,5mm RHINO WALLBOARD - ONE LAYER EACH SIDE
 THICKNESS 89mm
 63,5mm DRYWALL STEEL TRACK FIXED TO FLOOR
 63,5mm DRYWALL STEEL STUD
 12,5mm TAPER-EDGE RHINO WALLBOARD
 25mm DRYWALL SCREWS
 RHINO DRYWALL JOINT SYSTEM

APPLICATION

SET DRYWALL STEEL STUDS SPACED 600mm CRS. INTO EQUIVALENT
 DRYWALL STEEL TRACK AT FLOOR AND CEILING
 APPLY A SINGLE LAYER 12,5mm GYPSUM WALLBOARD TO ONE SIDE
 USING 25mm DRYWALL SCREWS SPACED AT 220mm CRS.
 INSTALL FLEXIBLE CORNER BEADS OR ALUMINIUM CORNER TRIM.
 TAPE AND JOINT ACCORDING TO SPECIFICATION DW14/96
 REFER TO STD. SPECIFICATION DW1/96
 PAINT TWO COATS PROMINENT SHEEN - WHITE CLOUD

08	FINISHES SCHEDULE
07	FIRE PROTECTION & SAFETY SIGNS
06	ACCESS FLOOR SPECIFICATIONS
05	DRYWALL SPECIFICATIONS
04	WINDOWS AND DOOR SCHEDULE
03	SECTIONS AND DETAILS
02	PLAN,ELEVATIONS AND DETAIL
01	DEMOLITION PLAN

REV	REVISION DESCRIPTION	DRAWN	CHKD	AUTH	DATE	SHT.no	REFERENCE DRAWINGS
APPROVED BY <i>T Mathe</i> T Mathe				National Transmission Company South Africa SOC Ltd Reg No 2021/539129/30			
CHECKED BY: S. SIBIYA DATE 25-11-2025		SIMMERPAN COMPLEX					
DRAWN BY: M.J. MATHEKGA DATE:28/10/2025		PTM& C LAB REFURBISHMENTS ENGINEERING BUILDING LABS(TELECOMS,LEGACY AND PHASE 6) DRYWALL DETAILS AND SPECIFICATIONS					
SCALE:As Shown		SIMCOP25P02-SE-D50		05		0	

DETAILED DESIGN FOR CONSTRUCTION

1 2 3 4 5 6 7 8 9 10 11 12

SIZE A2L
GRUOTE