

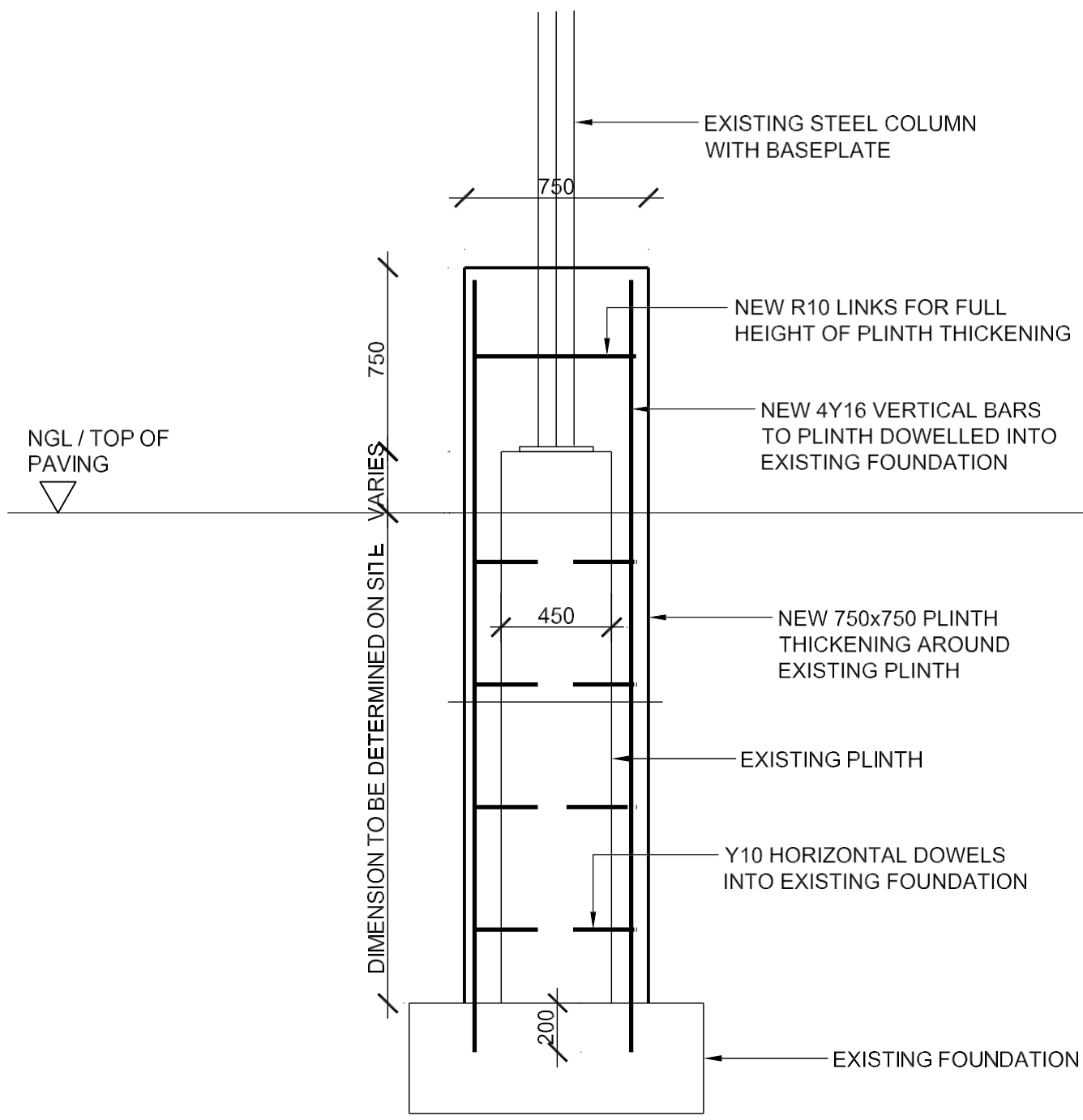
www.prasa.com

Be moved

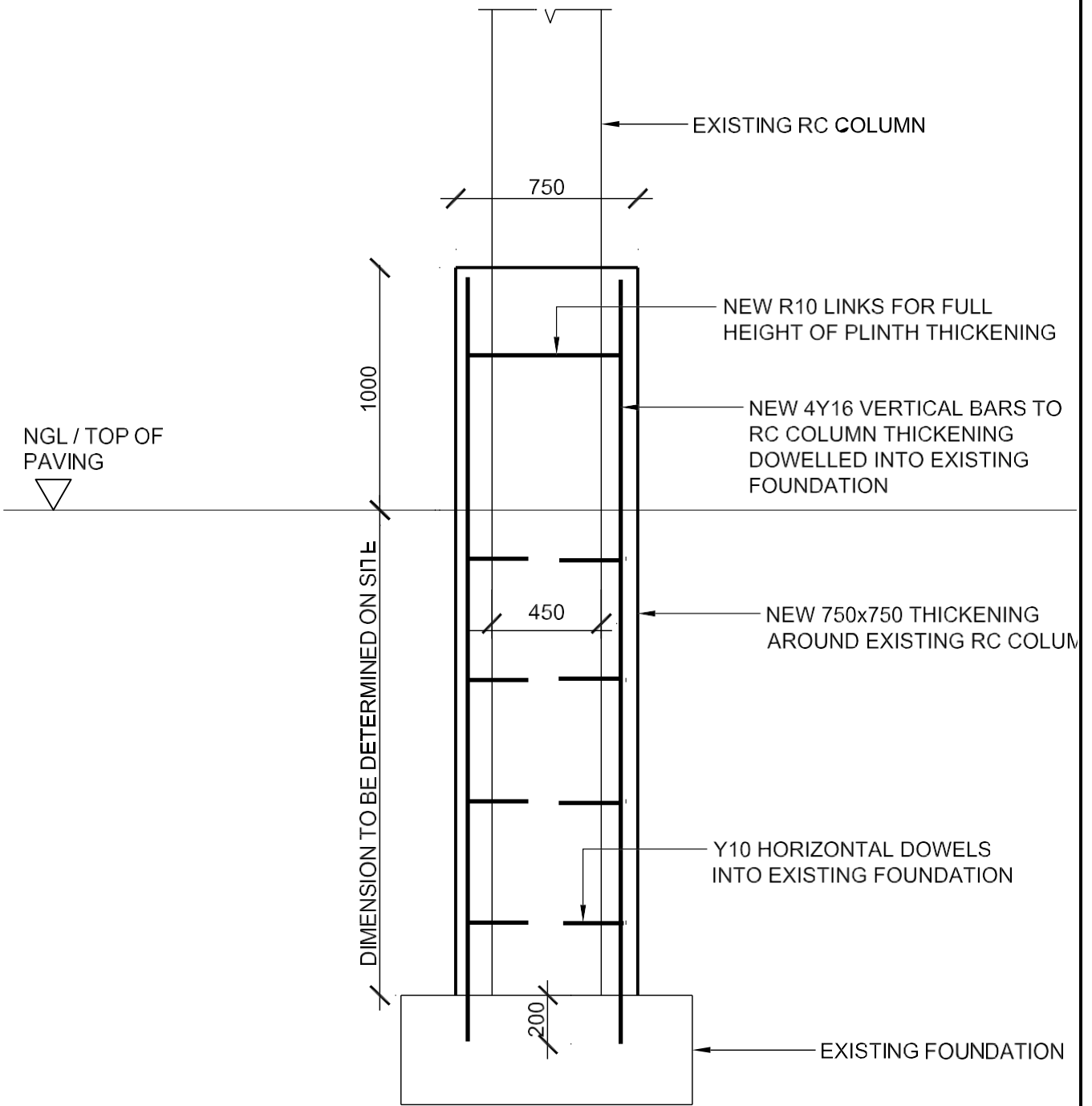


prasa

PASSENGER RAIL AGENCY
OF SOUTH AFRICA



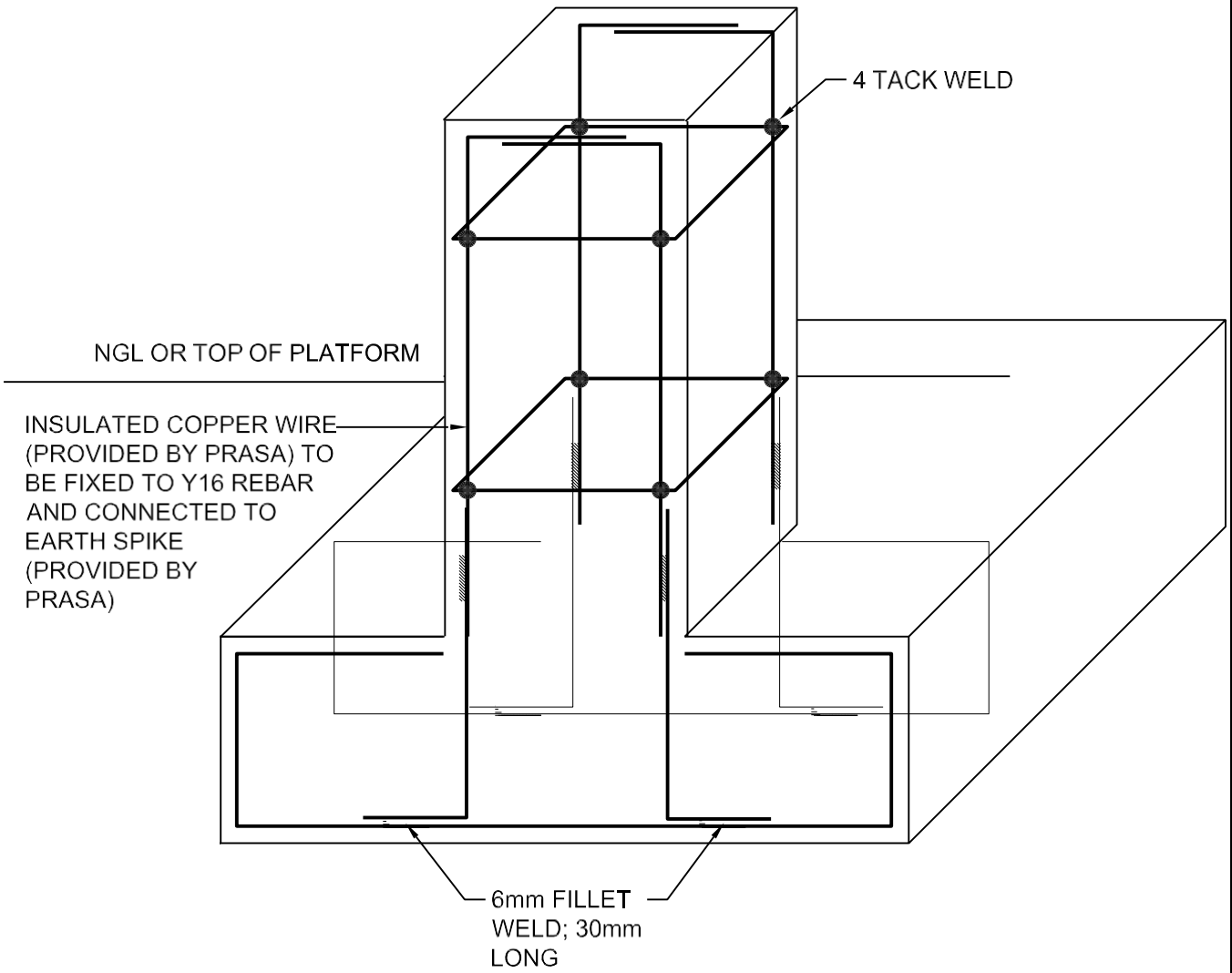
STEEL COLUMN PLINTH REHABILITATION DETAIL




RC COLUMN REHABILITATION DETAIL

<p>Be moved prasa PASSENGER RAIL AGENCY OF SOUTH AFRICA</p>	Drawing Title		RFQ
	PRASA TENDER No.		
SCALE	DATE	DRAWING NO.	
1: 25	18/05/2026		

TACK WELD = 8 No. OFF
 FILLET WELD = 8 No. OFF



RC COLUMN EARTHING AND BONDING DETAIL

<p>Be moved</p>  <p>prasa PASSENGER RAIL AGENCY OF SOUTH AFRICA</p>	Drawing Title		RFQ	
	PRASA TENDER No.			
SCALE	DATE	DRAWING NO.		
NTS	18/05/2026			