
TRANSNET SOC LTD

TENDER NUMBER: TNPA/2024/02/0029/56327/RFP

ADDENDUM NO: 03

DATED: 03 October 2025

The following information is furnished in addition to, in amplification and substitution of, matters contained in the tender documents issued in respect of the abovementioned work.

1. Drawings

The drawings 10777 - 001 (Steel Panel Item 1) provided in the previous RFP in the market have been replaced by the attached Annexure A drawings.

This addendum must be signed and submitted with your tender.

Prepared By: Phelokazi Madaki

A handwritten signature in black ink, appearing to read "Phelokazi Madaki", positioned above a horizontal line.

Date: 03 October 2025

Approved By: Michael Hogg

A handwritten signature in black ink, appearing to read "Michael Hogg", positioned above a horizontal line.

Date: 03 October 2025

FROM: _____

DATE: _____

TENDER NUMBER: TNPA/2024/02/0029/56327/RFP
SUPPLY AND DELIVERY OF RUBBER CYLINDRICAL AND SUPERCONE MARINE FENDERS
TO THE PORT OF CAPE TOWN FOR A PERIOD OF TEN (10) MONTHS.

Dear Sir / Madam

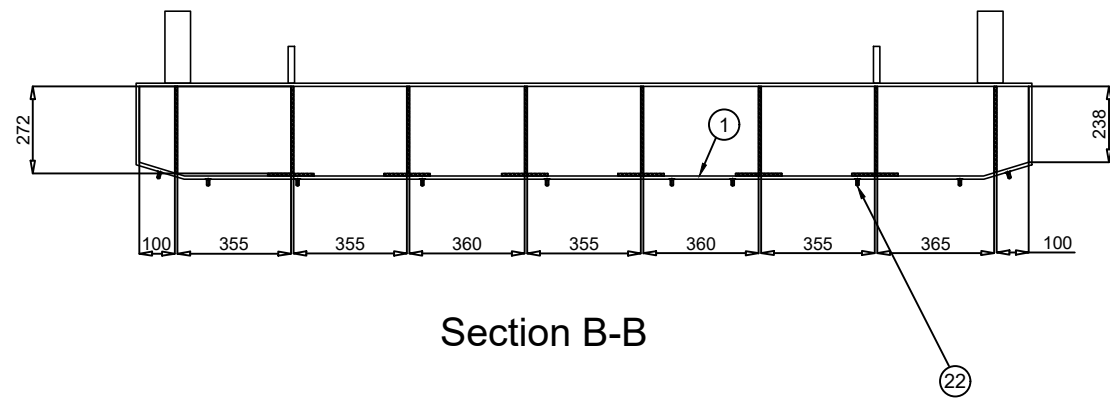
Receipt of **Addendum No. 03** dated **03 October 2025** is hereby acknowledged.

Kind regards

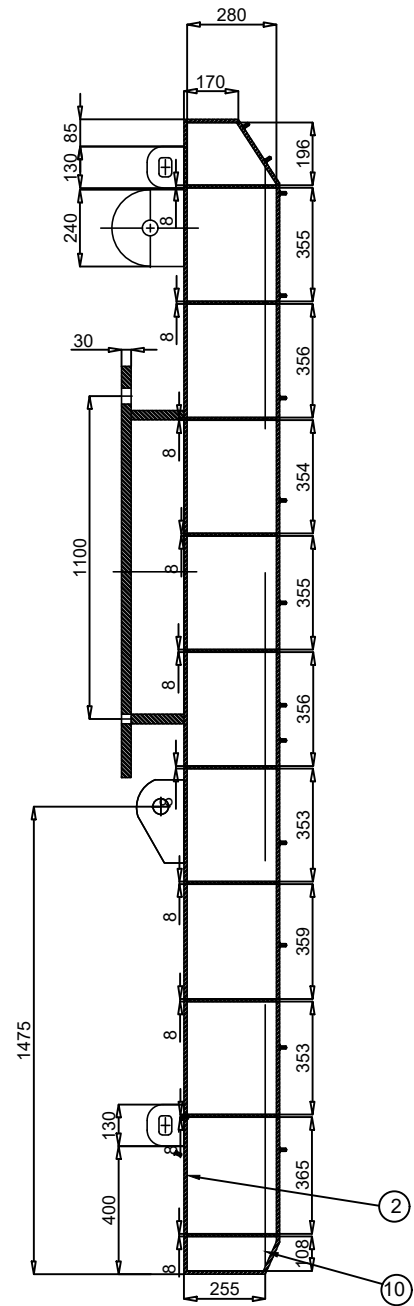
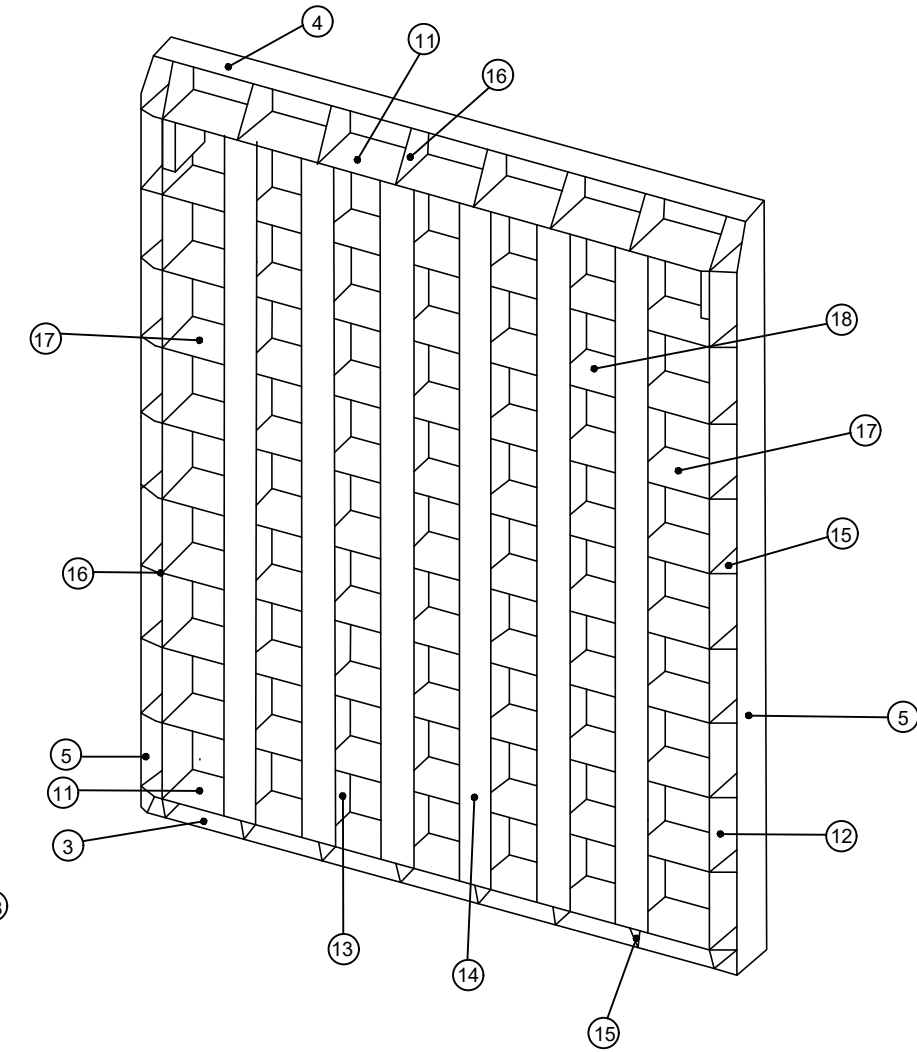
TENDERER

NOTE: The undersigned confirm that the following communications received from the Employer before the submission of this tender offer, amending the tender documents, have been taken into account in this tender offer.

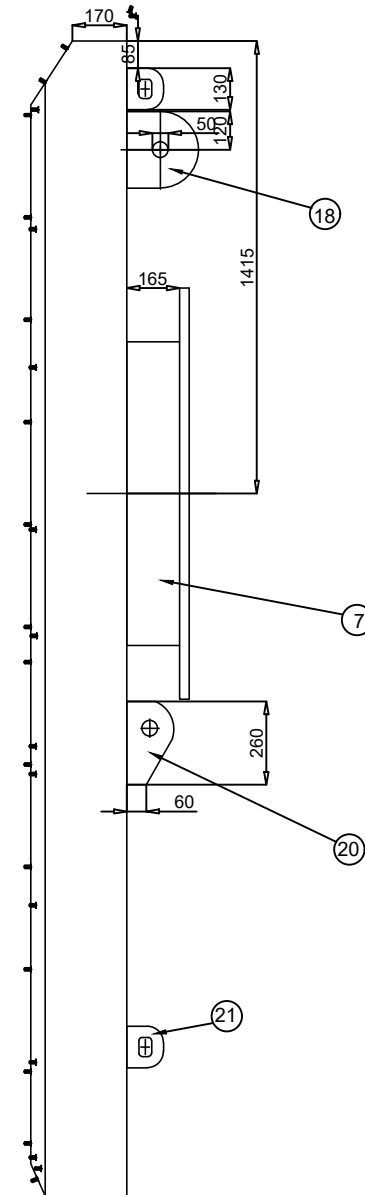
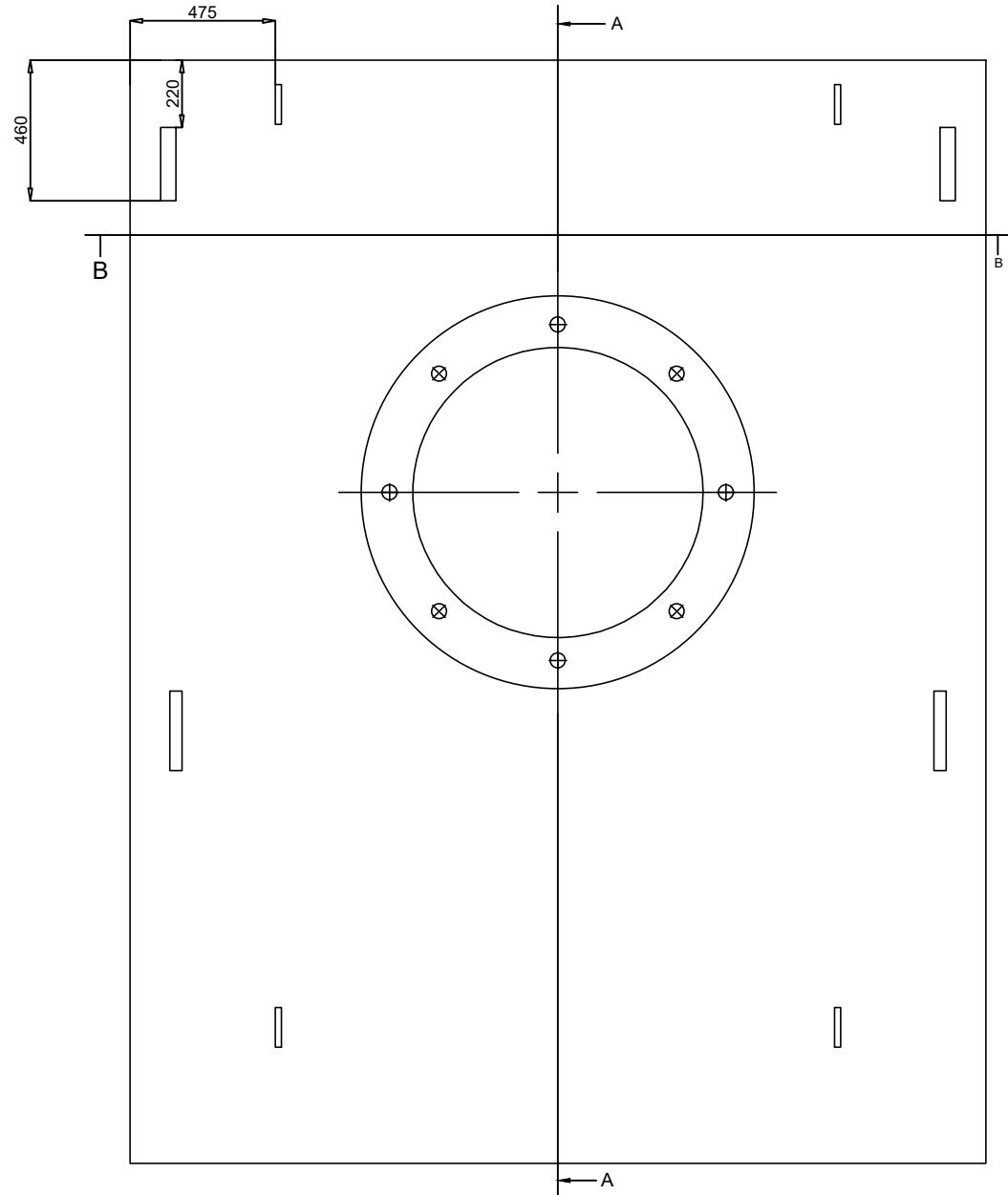
ANNEXURE A



Section B-B



Section A-A



BILL OF MATERIALS FOR ONE (1) FENDER PANEL				
Item	Description	Quantity	Dimensions	Material
1	STEEL PLATE	1	10x3590x2780	S355J2
2	STEEL PLATE	1	10x3310x2500	S355J2
3	STEEL PLATE	1	10x2780x240	S355J2
4	STEEL PLATE	1	10x2780x160	S355J2
5	STEEL PLATE	2	10x3590x240	S355J2
6	STEEL TUBE	1	Ø950xØ920x165	S355J2
7	STEEL PLATE	1	Ø1285x30	S355J2
8	STEEL PLATE	1	10x2780x225	S355J2
9	STEEL PLATE	2	10x3400x58.5	S355J2
10	STEEL PLATE	1	10x2780x58.5	S355J2
11	STEEL PLATE	2	8x2560x280	S355J2
12	STEEL PLATE	2	8x3290x280	S355J2
13	STEEL PLATE	6	8x3274x272	S355J2
14	STEEL PLATE	6	8x3274x148	S355J2
15	STEEL PLATE	28	8x270x99	S355J2
16	STEEL PLATE	8	8x270x199	S355J2
17	STEEL PLATE	16	8x280x272	S355J2
18	STEEL PLATE	40	8x357x272	S355J2
19	STEEL PLATE	2	50x225x240	S355J2
20	STEEL PLATE	2	40x260x145	S355J2
21	STEEL PLATE	4	20x130x110	S355J2
22	WELD STUD	140	M20x35	SS316
TOTAL WEIGHT = 3405kg				

NOTES:

DIMENSIONS:

- Supplier is to verify all dimensions with an existing unit prior to any manufacturing activities.
- Placement of the weld studs is to be verified using an existing unit with the PE pads used as the template.

TOLERANCE:

- As per EN ISO 13920, Class-C.

WELDING UNLESS OTHERWISE STATED:

- Welding Class C
- Fillet Welds: $a = 0.7 \times \text{Plate Thickness}$.
- Butt Welds: Single V-Butt Welds, Full Penetration.

SURFACE PREPARATION:

- Abrasive blast clean to SA 2.5 (ISO 8501-1:2007).
- The surface to be painted shall be smooth and rough welds and corners shall be treated, porsity, spatter etc shall be adjusted.

PAINTING:

- According to ISO 12944-9:2018, Corrosivity Category CX (IM4).
- Total Dry Film Thickness: 450 micron.
- Colour: Blue (RAL 5005).

HYDROSTATIC TEST PROCEDURE:

- The panel is to be pressure tested to a minimum of 7.5 psi (50kPa) and shall be maintained for 15 minutes. Each panel is to be accompanied by a pressure testing certificate.

ROOM 206
NPA HOUSE
PORT OF CAPE TOWN
P. O. BOX 4245
8000
TEL. (021) 449 - 2134

PORT OF CAPE TOWN

SUPERCONE STEEL FENDER PANEL

DRAWN	N.Jiya	CHECKED	T.Huma
SCALE	NTS		
No.			
DATE	30 Sep 2025	SHEET	
CAD. REF.			
FILE		AMENDMENT	