

PRIVATE SPECIFICATION

Prepared for the



SOUTH AFRICAN AIRWAYS

A STAR ALLIANCE MEMBER 

WINTER COAT, MEN



Item Number: CO18
Document Number: SAA1008
Version 02.0/April 2014

1. Scope

This specification¹ covers the material, make and design of winter coats for male personnel of the South African Airways ground crew.

2. Definitions and Abbreviations

For the purpose of this specification the definitions given in SANS 10371 "Terms and definitions for clothing" and the following shall apply:

acceptable: acceptable to the South African Airways

nominal: subject to the tolerances normal to good manufacturing practice

SANS: South African National Standard

3. Style

The style is as follows:

- ◆ single breasted
- ◆ four buttons on the right forepart
- ◆ four buttonholes on the left forepart
- ◆ step collar and lapel
- ◆ square front bottom edges
- ◆ fronts to have waist suppression darts
- ◆ side body panel to extend from the front to the back
- ◆ back panel to have a centre back seam with bottom vent
- ◆ two piece long sleeves with plain cuffs
- ◆ left front to have a slanted welted breast pocket
- ◆ two single jetted side pockets with flaps
- ◆ fully lined
- ◆ lining fronts to each be fitted with a single jetted breast pocket

¹ This private specification has been compiled by National Private Specifications (Pty) Ltd. privatespecs@vodamail.co.za

Doc No	Item No	Date	Version	Page	No of pages
SAA2007	CO18	April 2014	02.0	2	20

4. Illustrations

Illustrations are not to scale and are for guidance only.

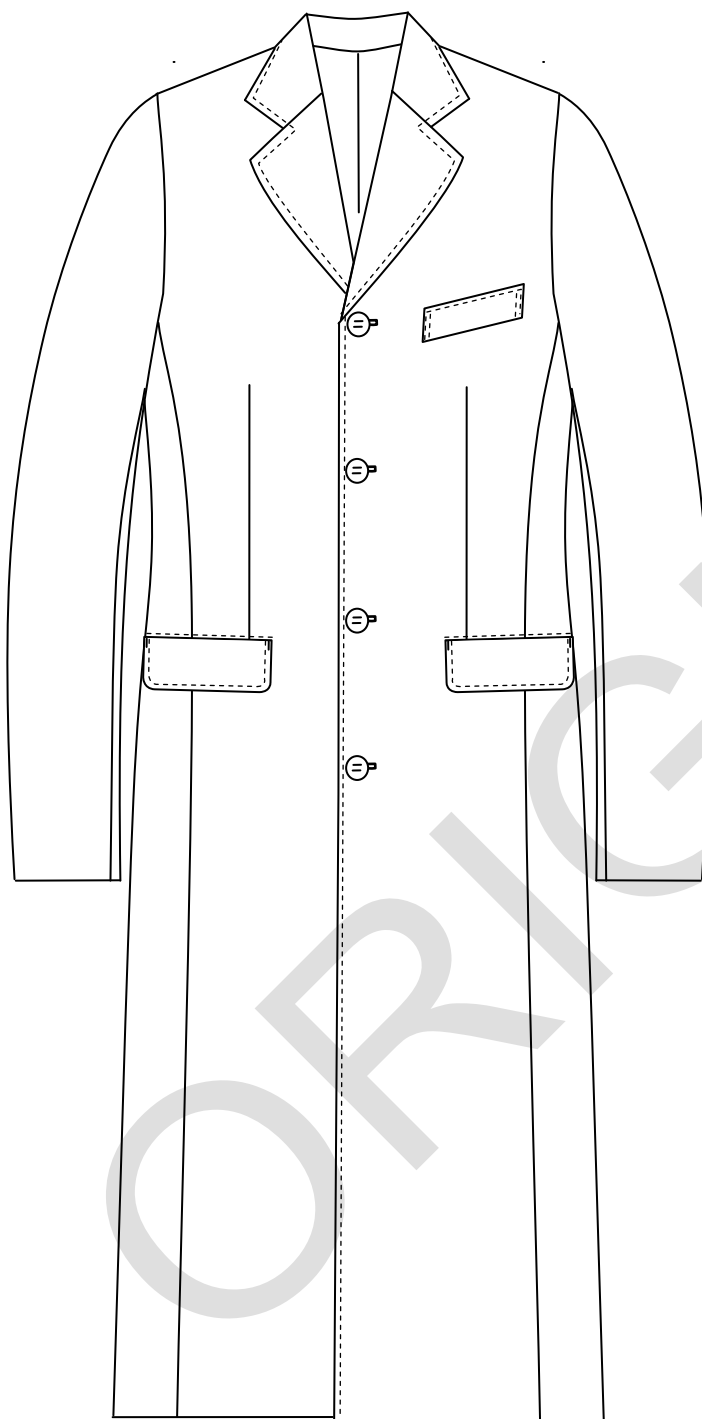


Figure 1 – Front

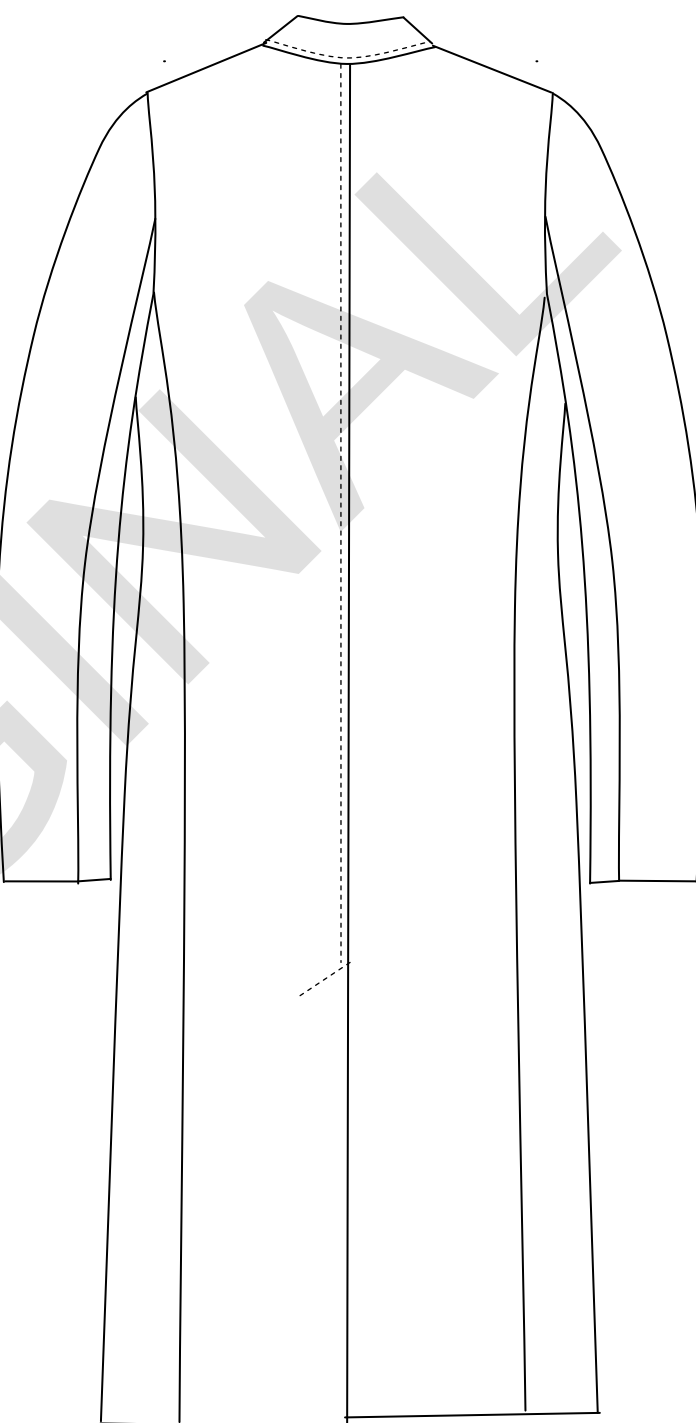


Figure 2 - Back

Doc No	Item No	Date	Version	Page	No of pages
SAA2007	CO18	April 2014	02.0	3	20

5. Client Furnished Materials

No materials will be supplied by the South African Airways.

6. Component Materials

The following materials shall be supplied and used by the manufacturer. Trim charts shall also be submitted by the manufacturer (see Annex A).

NOTE: All components listed below shall be manufactured in the Republic of South Africa. In instances where the raw material and/or finished components are not available in the Republic of South Africa, the onus shall be on the bidder to apply for exemption certificates from DTI. Exemption certificates, where relevant, shall be submitted together with each bid.

6.1 Outer material

- ♦ to comply with the requirements as given in table 1
- ♦ colour shall be a match, in terms of SANS 10076-5, "The assessment of defects in textile piece-goods and made-up articles- Part 5: Defects in woven woollen and worsted piece-goods" to CKS 129 Colour No. 632c-2014 "SAA Melton"
- ♦ to be treated with a fabric protector (water-repellent, oil-and-soil repellent, breathable, washable and dry-cleanable)
 - Ruco-guard² is a typical example of a suitable product
 - manufacturer to submit a certificate of the relevant product used
- ♦ **Mothproofing:**
When tested in accordance with WTC TM 27 after exposure to dry cleaning and light in accordance with WTC TM 28, the efficacy of the mothproofing treatment and the durability of the mothproofing treatment after washing and light exposure shall comply with the requirements for South Africa (i.e. Level 3) given in Woolmark specification CP-4, "Products for the insect resist treatment of wool products."
- ♦ **Freedom from defects:**
The assessment and stringing of defects, and the deductions to be made for strung and unstrung defects, shall be in accordance with SANS 10076-5, and shall be based on the following LAQs:
 - for pieces: 10
 - for a lot: 8

6.2 Interlining

- ♦ fusible woven or non-woven interlining
- ♦ complies with the requirements of CKS 627 "Fusible interlinings"
- ♦ suitable for use in garments which may be dry-cleaned
 - capable of withstanding the same washing and drying procedures as specified for the outer material

The selection of interlining of appropriate mass per unit area to be determined by consultation with the supplier of the interlining.

² Ruco-Guard® is the trade name of a product supplied by the Rudolf Group™. This information is given for the convenience of users of this private specification and does not constitute an endorsement by the South African Airways of the product named. Equivalent products may be used if they can be shown to lead to the same results.

Doc No	Item No	Date	Version	Page	No of pages
SAA2007	CO18	April 2014	02.0	4	20

Table 1 – Outer material requirements

1	2	3
Property	Requirement	SANS number (unless otherwise indicated)
Composition, %		1833-1 and 1833-4
Wool	92 ± 3	
Nylon	8 ± 3	
Usable width, cm, range	148	81
Weave	See figure A	Visual examination and physical analysis
Number of threads per centimetre^a, min.		7211-2
Warp	16,0	
Weft	8,5	
Mass per area (free from non-fibrous material), g/m ² , min.	320	79
Breaking strength, N, min.		13934-1
Warp	300	
Weft.....	180	
Resistance to pilling^b, rating, min.	3 – 4 (slight to moderate)	6116
Dimensional changes, %, max.		
Dry cleaning		ISO 3175-2
Warp and weft direction	-2	
Colour fastness to:		
Dry cleaning, rating, min.		105-D01
Change in colour	4	
Staining of solvent	4	
Perspiration, rating, min.		105-E04
Change in colour	4	
Staining of solvent	4	
Rubbing, rating, min.		105-X12
Dry	4 – 5	
Wet	4	
Light, rating, min.	5 – 6	105-B02
^a Recommended yarn linear densities, Warp: 2/24nm; Weft: 1/07nm.		
^b Tested after dry cleaning in accordance with SANS 6026:2005, procedure B.		

6.3 Lining

6.3.1 General

- ♦ lining shall be treated with an anti-static finish
- ♦ colour to be an acceptable match to the outer material
- ♦ to comply with one of the types as given 6.3.2 and 6.3.3 (both types will be regarded as acceptable)

6.3.2 Type 1 lining

- ♦ to comply with the requirements for type L61P of SANS 1387-7 "Woven cotton and similar apparel fabrics – Part 7: Jacket linings"

Doc No	Item No	Date	Version	Page	No of pages
SAA2007	CO18	April 2014	02.0	5	20

6.3.3 Type 2 lining

- ♦ to comply with the same requirements as specified for Type 1, but with the following deviations:
 - weave: to be a mock-leno weave
 - air permeability: to have a minimum requirement of 130 cfm³ at 12.5 mm (0.5 in) water pressure when tested in accordance with ASTM D737-96 “Standard Test method for air permeability of textile fabric”

6.4 Sleeve-head roll

- ♦ acceptable wadding (glazed on both sides)
- ♦ suitable to give the desired shape at the sleeve head
- ♦ to conform to the needs of the pattern

6.5 Buttons

- ♦ four-hole plastics
- ♦ nominal diameter of 25 mm
- ♦ to comply with the requirements of SANS 1457 “Plastics buttons”
- ♦ dope-dyed and fully impregnated
- ♦ colour to be an acceptable match to the colour of the outer material

6.6 Threads

- ♦ to comply with relevant requirements of SANS 1362 “Sewing threads”
- ♦ colour to be an acceptable match to the colour of the outer material
- ♦ polyester-and-cotton core-spun
- ♦ ticket No 80

7. Workmanship

The coats shall be:

- ♦ cut and made with first-class workmanship throughout
- ♦ of uniform and acceptable make, colour and finish

Shall be free from:

- ♦ defects, that affect their appearance or may affect their serviceability (or both)
- ♦ marks, spots, stains, incurred in the making-up

Seams and stitches shall be:

- ♦ smooth and uniform, free from twists, pleats and puckers
- ♦ sufficiently extensible to avoid seam cracking and undue shrinkage in use

Ends of sewing shall be:

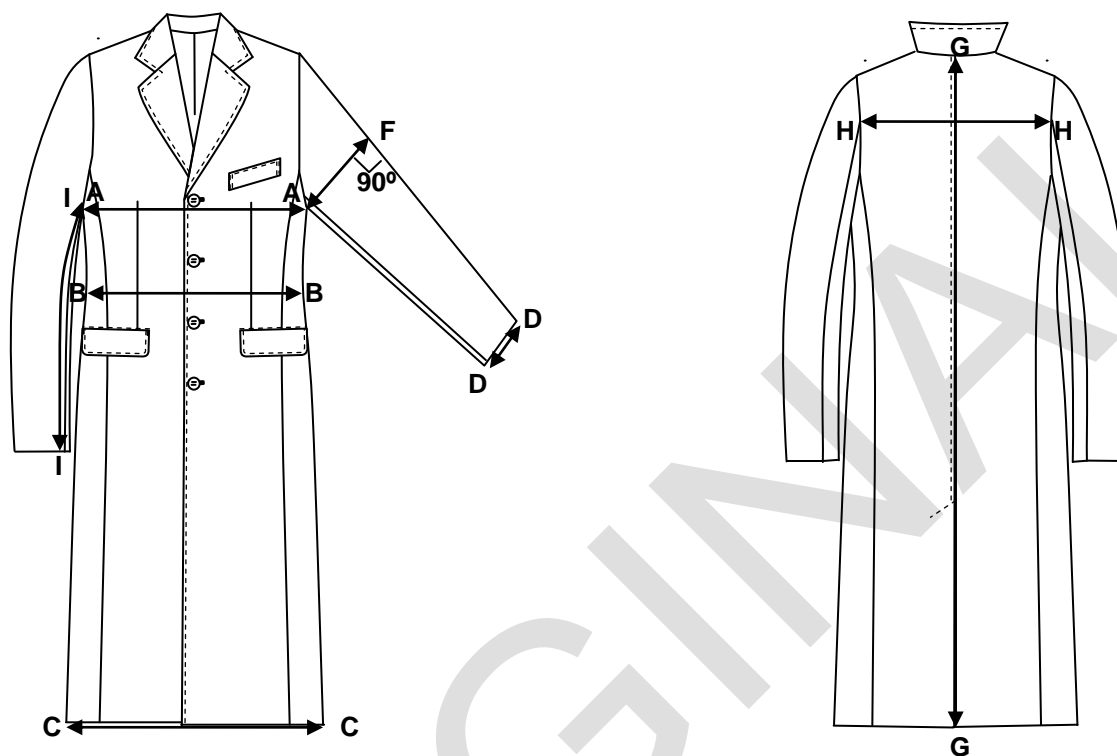
- ♦ trimmed and loose threads removed
- ♦ back-tacked if unsecured

³ cfm = cubic feet of air per minute per square foot of fabric (ft³/min/ft²)

Doc No	Item No	Date	Version	Page	No of pages
SAA2007	CO18	April 2014	02.0	6	20

8. Sizes

Coat measurements:



MEASURING POINT		DESCRIPTION
A – A	Chest circumference	Measure across the width of the coat, garment spread flat, with all buttons fastened, at the base of the scye, and multiply by two
B – B	Waist circumference	Measure across the width of the coat at the narrowest part of the body (natural waist) and multiply by two.
G – G	Back length	Measure from the centre back neck seam to the bottom edge of the coat.
H – H	Back width	Measure across the width of the back, at the hind-arm sleeve pitch level from one sleeve insertion seam to the other.
I – I	Sleeve length	Measure the length from the armhole to the outer edge of the cuff, along the FOREARM seam .
A – F	Bicep circumference	Measure across the sleeve from the base of the scye to the overarm at a 90° angle, and multiply by two.
D – D	Cuff circumference	Measure across the width of the cuff, and multiply by two.
C – C	Bottom hem circumference	Measure across the bottom hem, with the buttons fastened, and multiply by two.

Doc No	Item No	Date	Version	Page	No of pages
SAA2007	CO18	April 2014	02.0	7	20

Table 2 - Size range

1	2	3	4	5	6	7
Size designation ¹	Nominal finished garment measurements, cm					
	Circumference				Forearm sleeve length	Back length
	Chest	Waist	Bottom hem	Cuff		
30	94	85	106	31.6	42.5	109
32	99	90	111	32	43	110
34	104	95	116	32.4	43.5	111
36	109	100	121	32.8	44	112
38	114	105	126	33.2	44.5	113
40	119	110	131	33.6	45	114
42	124	115	136	34	45.5	115
44	129	120	141	34.4	46	116
46	134	125	146	34.8	46.5	117
48	139	130	151	35.2	47	118
50	144	135	156	35.6	47.5	119
52	149	140	161	36	48	120
54	154	145	166	36.4	48.5	121

1. Based on the chest circumference of the wearer in inches.

9. Make

Illustrations are not to scale and are for guidance only, and unless inconsistent with the text, all measurements are nominal.

9.1 Foreparts

- ◆ be single breasted
- ◆ to each have a front panel and a side body panel
 - front panel shall incorporate a waist dart and shall be fully interlined with interlining
 - side body panel shall extend from the front towards the back
- ◆ have single jetted side pockets with flaps
- ◆ have a lapel
 - of finished width 110 mm (measured horizontally from breakline of lapel to outer edge of lapel point, see figure 3)
 - lapel step of finish length 55 mm
- ◆ be fully lined
- ◆ have square front bottom edges
- ◆ have a separate facing
- ◆ be top-stitched 7 mm along the front edges

Right front shall:

- ◆ be fitted with four buttons

Doc No	Item No	Date	Version	Page	No of pages
SAA2007	CO18	April 2014	02.0	8	20

Left front shall:

- ◆ be fitted with four buttonholes
- ◆ be fitted with a welted breast pocket

9.2 Facings

9.2.1 Front facings

- ◆ of outer material
- ◆ interlined with interlining
- ◆ shall be of finished width 60 mm at the shoulder seam
- ◆ shaped to approximately 120 mm at the bottom hem and at the button/buttonhole position

9.2.2 Back neck facings

- ◆ of outer material
- ◆ interlined with interlining
- ◆ shall be of finished depth 60 mm at the shoulder seam and at centre back

9.3 Lining

- ◆ coat to be fully lined with lining
- ◆ body lining shall be so cut and made that it conforms to the shape of the coat
- ◆ be sewn to the outer garment at the sleeve and bottom hems, back neck facing, front facing and back bottom vent
- ◆ have a 20 mm deep knife pleat positioned below the centre back neck
 - extending from the bottom of the back neck facing to the waist position
- ◆ to have a pleat along the bottom hem of the jacket and cuff

Facing-to-lining seams:

- ◆ to be smooth
- ◆ be without undue fullness

9.4 Armholes

Armholes shall:

- ◆ be interlined with interlining at the front armhole section of the front side panel
- ◆ be stayed with a 10 mm wide strip of an acceptable tape around the armhole

9.5 Sleeves

Sleeves shall:

- ◆ be two-piece set-in type
- ◆ have plain cuffs
 - interlined with an 80 mm wide strip of a fusible interlining
 - have a hem of finished width 40 mm
- ◆ such that the sleeve head is fitted with a sleeve head roll
- ◆ fully lined
- ◆ bicep circumference to measure 47 cm on size 44 and graded proportionally on the other sizes (when measured in accordance with section 8)

Doc No	Item No	Date	Version	Page	No of pages
SAA2007	CO18	April 2014	02.0	9	20

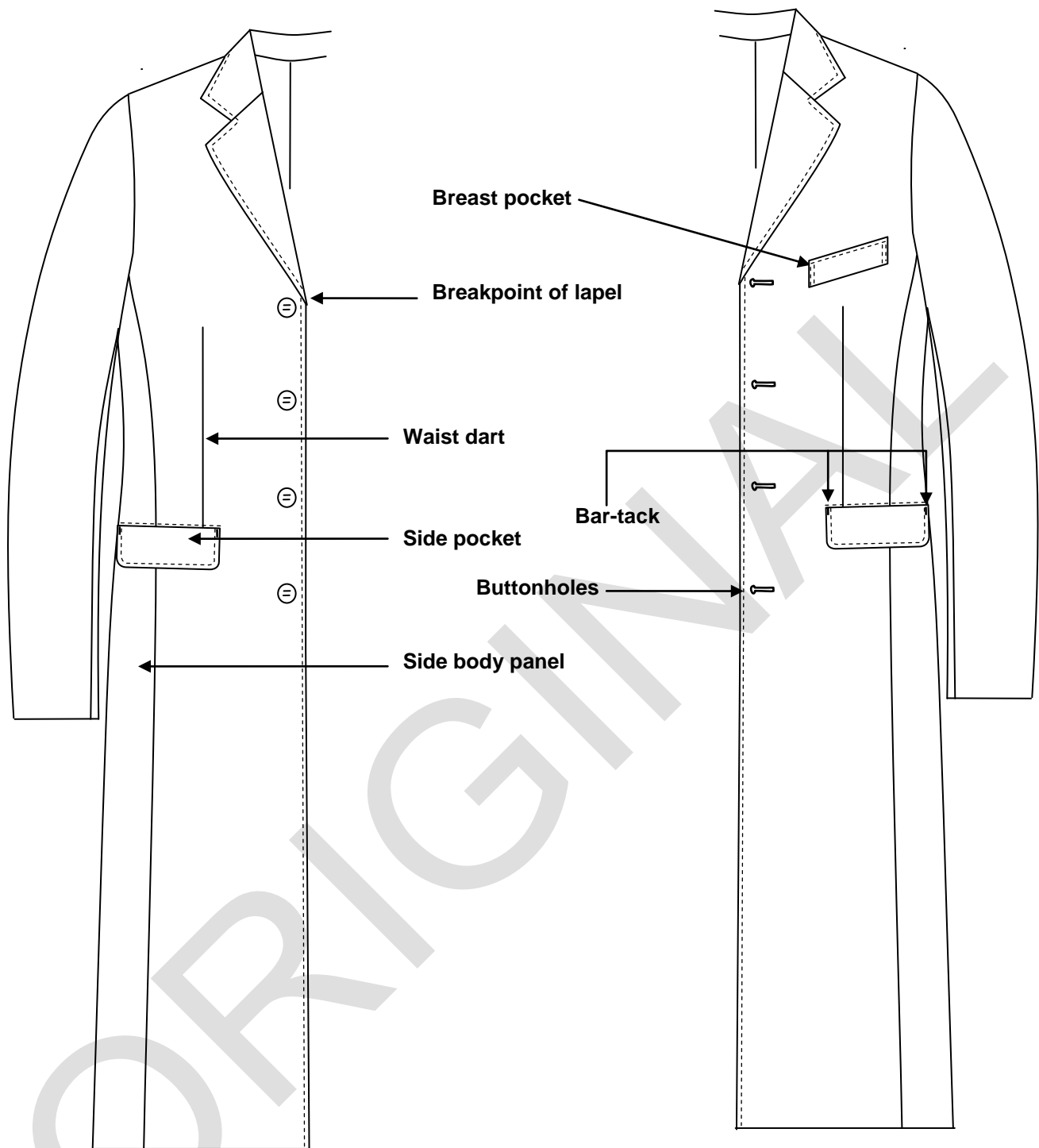


Figure 3 – Front design components

9.6 Back

Back shall:

- ◆ consist of two back panels, joined by a centre back seam and two side body panels
 - side body panels to extend from the forepart to the back
- ◆ a vent in the centre back seam
 - interlined with interlining
 - finished length 40 cm
 - finished width 65 mm
 - laps left over right

Doc No	Item No	Date	Version	Page	No of pages
SAA2007	CO18	April 2014	02.0	10	20

- tacked along the full width at the top edge of the vent with a slanted stitching
- raw edge of right underlapping panel to be sewn to the lining and stay-stitched
- ◆ fully lined
- ◆ centre back seam to be top-stitched 7 mm
- ◆ back width to measure 49 cm on size 44, and graded proportionally on the other sizes (when measured in accordance with section 8)

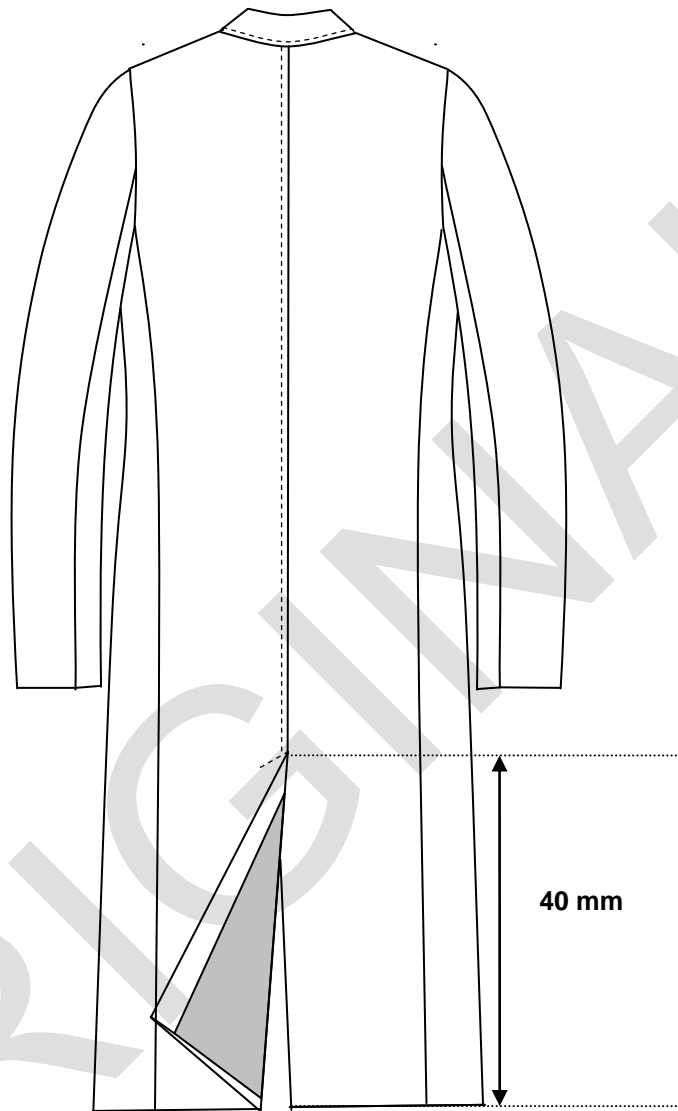


Figure 4 – Back

9.7 Collar

- ◆ be a one piece collar
 - of outer material
 - lined with outer material
 - interlined with interlining
- ◆ be flat (free from curl) and smooth
- ◆ be of finished depth 90 mm at the centre back
- ◆ have a collar step of 50 mm
- ◆ have a 7 mm top-stitching along the free edges

Doc No	Item No	Date	Version	Page	No of pages
SAA2007	CO18	April 2014	02.0	11	20

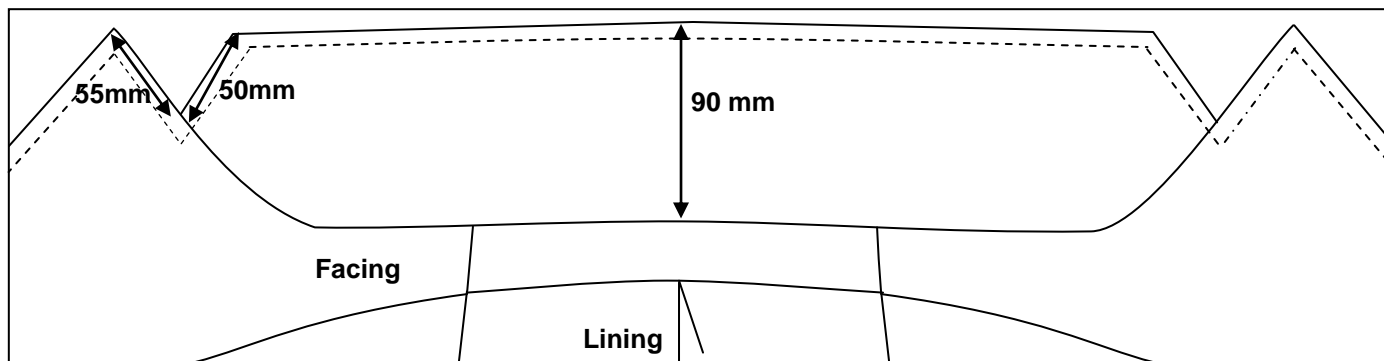


Figure 5 – Collar

9.8 Pockets

Each coat shall have:

- ◆ two side single jetted pockets with flaps
- ◆ one slanted welted breast pocket
- ◆ two inside lining pockets

9.8.1 Side pockets:

- ◆ positioned in the front panel
- ◆ positioned with the top of the pocket flap 80 mm below the waist level
- ◆ extend from the natural side seam towards the front
- ◆ be of finished length:
 - 15.5 cm on sizes 42/107 and smaller
 - 16.5 cm on sizes 44/112 and larger

Pocket mouth:

- ◆ single jetted pocket of width 5 mm - 7 mm
 - jet to be of double folded outer material and interlined with interlining
- ◆ concealed by a pocket flap

Pocket bags:

- ◆ pocket bag closer to the body of the wearer shall be of outer material
- ◆ top pocket bag shall be of lining
- ◆ of finished depth 18 cm (measured from the pocket mouth opening)

Pocket flap:

- ◆ shall be of outer material, interlined with interlining and sewn in with top edge of pocket mouth
- ◆ lined with outer material
- ◆ of finished depth 55 mm
- ◆ rounded at the bottom corners
- ◆ edge-stitched 7 mm along the free edges
- ◆ edge-stitched 2 mm along the top edge (stitching positioned on body of coat)
- ◆ bar-tacked vertically at the top outer edges with bar-tacks positioned 2 mm from the outer edges of the flap

Doc No	Item No	Date	Version	Page	No of pages
SAA2007	CO18	April 2014	02.0	12	20

9.8.2 Breast pocket:

- ♦ single welted slanted pocket
- ♦ of double folded outer material, interlined with interlining
- ♦ positioned appropriately on the left forepart
- ♦ welt to be of finished length 11 cm (on all sizes)
- ♦ welt to be of finished depth 25 mm - 30 mm (on all sizes)
- ♦ the side edge of the welt shall be at least 30 mm from the armhole
- ♦ pocket bags of lining
 - of finished depth 140 mm (excluding the welt)

9.8.3 Inside lining breast pockets:

- ♦ single welted pockets OR double jetted pockets of lining
- ♦ depth of finished welt to be 15 mm, or alternatively the double jets shall each be of finished width 5 mm
- ♦ interlined with interlining
- ♦ pocket mouth of finished length 120 mm (min.)
- ♦ top edge to be positioned approximately 20 mm below the base of the scye
- ♦ front edge to be sewn in with the lining-to-facing seam
- ♦ side edge to be properly secured along full width of welt/jets
- ♦ have a bearer of outer material of depth 40 mm
- ♦ pocket bag shall be of lining and of finished depth 170 mm (measured from the top of the pocket mouth opening)
 - lining attached to the bearer

9.9 Buttonholes

- ♦ four jacket type buttonholes in the left front
 - horizontal
 - equidistantly spaced
 - neatly made, gimped and barred
 - of such length as to neatly accommodate the buttons of diameter 25 mm
 - positioned 20 mm from front edge
 - top buttonhole to be positioned at the breakpoint of the lapel
 - remaining three buttonholes to be equidistantly spaced at 10-12 cm intervals

9.10 Buttons

- ♦ four buttons to be secured to the right front
 - in a corresponding position to that of the buttonholes
 - positioned 20 mm from the front edge (centres)
- ♦ one button to be placed in a plastics envelope and attached to the swing ticket

9.11 Hems

The bottom hem of the coat to be:

- ♦ of finished width 40 mm
- ♦ interlined with an acceptable fusible interlining
- ♦ sewn to the lining (lining to have pleat)

Doc No	Item No	Date	Version	Page	No of pages
SAA2007	CO18	April 2014	02.0	13	20

10. Stitches, Seams and Stitchings

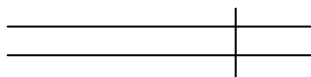
10.1 Stitches

Mains seaming: single needle lock stitch

10.2 Seams

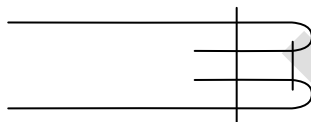
Seams to be at least 10 mm wide (unless otherwise stated):

Main seams: seam type SSa-1



Superimpose two or more plies of material and seam with the appropriate number of rows of stitches positioned at the specified distance(s) from the aligned edges.

Pocket flaps and collar: Seam type SSe-2



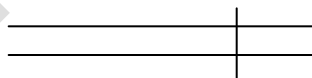
Form seam Type SSa-1, using two plies of material. Then turn back each ply at the seam and seam through the turned edges with the appropriate number of rows of stitches.

Front edges of coat: seam type SSae-3



Form seam Type SSa-1, using two plies of material. Then turn back each ply at the seam, stay-stitch the one layer, ensuring that when more than one row of stitches is used, one row passes through the folded edges. Then seam with one row of stitches through all layers.

Other seams: seam type SSa



Superimpose two or more plies of material and seam with the appropriate number of rows of stitches positioned at the specified distance(s) from the aligned edges.

10.3 Number of stitches

The determination of sewing stitches per unit length: use SANS 5278 "Sewing stitches per unit length"

Seaming and top-stitching: 40 ± 4 per 10 cm

buttons: 10-12 per button

buttonholes: 12 ± 1 per 1 cm

Doc No	Item No	Date	Version	Page	No of pages
SAA2007	CO18	April 2014	02.0	14	20

11. Garment labels

NOTE: Tender samples shall be fitted with a printed label displaying the manufacturer's name or trade mark and size.

11.1 Label identification

Each garment shall be fitted with the labels as given in table 3:

Table 3 – Label identification

Type		Requirements
1.	a woven logo jacquard label	See 11.2
2.	a woven jacquard size label	See 11.3
3.	a garment specific printed woven fabric label*	See 11.4
4.	a care-label*	See 11.5
5.	a paperboard swing tag	See 11.6

*These two labels may be separate labels or a single loop label.

11.2 Jacquard logo label

Each label shall:

- ♦ be a woven jacquard label
- ♦ edges to be properly finished to prevent fraying
- ♦ information to be in legible and indelible block letters of height at least 3 mm
- ♦ permanently secured and sewn to the lining at centre back on the inside
- ♦ be such that it shall outlast the garment
- ♦ include the following information:
 - the manufacturer's name or trade mark or both
 - the registered full-colour SAA logo at top of label (see figure below)



11.3 Jacquard size label

Each label shall:

- ♦ be a woven jacquard loop label
- ♦ edges to be properly finished to prevent fraying
- ♦ information to be in legible and indelible block letters of height at least 3 mm
- ♦ sewn together with the side edge of the jacquard logo label
- ♦ be such that it shall outlast the garment

11.4 Printed garment labels

Each label shall:

- ♦ be white woven rayon label that is printed
- ♦ comply with SANS 1309 "Printed labels for textiles"

Doc No	Item No	Date	Version	Page	No of pages
SAA2007	CO18	April 2014	02.0	15	20

- information to be in legible and indelible block letters of height at least 3 mm
- ♦ permanently secured and sewn to the back facing
- ♦ be such that they outlast the garments (including the markings)
- ♦ include the following information:
 - the item number
 - order number
 - the year and month of manufacture
 - the VAT no of the contractor
 - the country of origin, i.e. "Made in the RSA"

11.5 Printed care-labelling

Each label shall:

- ♦ be white woven rayon label that is printed
- ♦ comply with SANS 1309 "Printed labels for textiles"
 - information to be in legible and indelible block letters of height at least 3 mm
- ♦ permanently secured to the side seam
- ♦ be such that they outlast the garments (including the markings)
- ♦ to provide appropriate care instructions (in accordance with SANS 10011 "Care-labelling of textile piece-goods, textile articles and clothing") in words and symbols
- ♦ provide the fibre composition of the fabric in accordance with the requirements of SANS 10235 "Fibre content labelling of textiles and textile products"

11.6 Printed swing tags

Each swing tag shall:

- ♦ be a white cardboard printed label
- ♦ information to be in legible and indelible block letters of height at least 3 mm
- ♦ include the following information:
 - the size designation
 - the item number
 - the item description
 - the month and year of manufacture
 - the order number

12. Packaging and marking of packaging

12.1 Packing

12.1.1 The coats shall be:

- ♦ delivered in a pressed and commercially dry condition
- ♦ so packed that they will not be damaged in transit or in storage
- ♦ individually placed on a hanger and packed in a plastics envelope of suitable size and shape
- ♦ unless otherwise specified in the order or contract, acceptably packed for transportation in bulk containers

12.1.2 Coats:

- ♦ of the same size designation to be packed together in a bulk container (unless quantities ordered are such that packing together of the same size only is not justified)
- ♦ of different size designations may also be packed together to accommodate the last part of an order or contract

Doc No	Item No	Date	Version	Page	No of pages
SAA2007	CO18	April 2014	02.0	16	20

12.2 Marking

12.2.1 Plastics envelopes

Each envelope to be clearly marked with the following information:

- ◆ the item number
- ◆ the item description
- ◆ size designation
- ◆ the order number
- ◆ month and year of manufacture

12.2.2 Bulk containers

Each bulk container shall have a label securely attached to the outside. This label shall be visible when the containers are stacked and shall provide the information in legible and indelible markings as follows:

- ◆ the manufacturer's name or trade mark or both
- ◆ the order number or contract number
- ◆ the item description
- ◆ the item number
- ◆ the size designation
- ◆ the quantity of the item
- ◆ the **month and year** of manufacture
- ◆ the order number
- ◆ the box number, e.g. "1 of 5"
- ◆ the total mass of the packed container
- ◆ the Inspection Certificate Number

12.3 Additional marking

When so required by the South African Airways, coats, plastics envelopes or containers (or any combination of these) to bear information additional to that specified above.

Doc No	Item No	Date	Version	Page	No of pages
SAA2007	CO18	April 2014	02.0	17	20

13. Normative References

The following documents contain provisions which, through reference in this text, constitute provisions of this specification. All documents are subject to revision and, since any reference to a document is deemed to be a reference to the latest edition of that document, parties to agreements based on this specification are encouraged to take steps to ensure the use of the most recent editions of the documents indicated below. Information on currently valid national, international and CKS documents may be obtained from the South African Bureau of Standards⁴.

CKS 627, *Fusible interlinings.*

ISO 3175-2, *Textiles - Professional care, drycleaning and wetcleaning of fabrics and garments -- Part 2: Procedure for testing performance when cleaning and finishing using tetrachloroethene.*

SANS 79, *Textiles – Mass per unit area of conditioned fabrics.*

SANS 81, *Width of a textile fabric sample.*

SANS 105-B02/ISO 105-B02, *Textiles – Tests for colour fastness – Part B02: Colour fastness to artificial light: Xenon arc fading lamp.*

SANS 105-D01, *Textiles - Tests for colour fastness Part D01: Colour fastness to dry cleaning.*

SANS 105-E04/ISO 105-E04, *Textiles – Tests for colour fastness – Part E04: Colour fastness to perspiration.*

SANS 105-X12, *Textiles - Tests for colour fastness Part X12: Colour fastness to rubbing.*

SANS 1309, *Printed labels for textiles.*

SANS 1362, *Sewing threads.*

SANS 1387-7, *Woven cotton and similar apparel fabrics – Part 7: Jacket linings.*

SANS 1457, *Plastics buttons.*

SANS 1833-1, *Textiles - Quantitative chemical analysis Part 1: General principles of testing.*

SANS 1833-4, *Textiles - Quantitative chemical analysis Part 4: Mixtures of certain protein and certain other fibres (method using hypochlorite).*

SANS 5113, *Non-fibrous material content of wool.*

SANS 5278, *Sewing stitches per unit length.*

SANS 5726, *Seaming properties of woven textile fabrics.*

SANS 6116, *Resistance of textile fabrics to pilling and fuzzing (Random tumble method).*

SANS 6026:2005, *Dry-cleaning pretreatment of textile fabrics.*

SANS 10011, *Care-labelling of textile piece-goods, textile articles and clothing.*

SANS 10076-5, *The assessment of defects in textile piece-goods and made-up articles Part 5: Defects in woven woollen and worsted piece-goods.*

SANS 10235, *Fibre-content labelling of textiles and textile products.*

SANS 10371, *Terms and definitions for clothing.*

SANS 13934-1/ISO 13934-1, *Tensile properties of fabrics, Part 1: Determination of maximum force and elongation at maximum force using the strip method.*

⁴ **SABS: Tel. +27 (0) 12 4287911**
www.sabs.co.za

Doc No	Item No	Date	Version	Page	No of pages
SAA2007	CO18	April 2014	02.0	18	20

ANNEX A

(Normative)

Special conditions of tender

A-1 GENERAL

A-1.1 Unless otherwise stated, the South African Bureau of Standards shall be the inspecting authority.

Any applications for deviations from drawings or the specification, or any laid down process, treatment or procedures as set out in this specification, must be made to the SA Airways and verified by the SABS⁵. All applications must be submitted in writing.

A-1.2 Three pre-production sample coats of different size designations, shall have been inspected, tested and approved by the inspecting authority before bulk production is commenced. Each one of these samples shall be accompanied by a trim chart containing a sample of each component material (as given in 6) and the relevant certificates. It shall be the duty of the manufacturer to give adequate notice to the inspecting authority of the availability of these samples.

A-1.3 The coats shall be subject to inspection during the course of manufacture. The inspector shall, during normal working hours, be given all reasonable facilities for carrying out his duties and shall have the right of entry into the contractor's factory and the factory or works of any subcontractor where work on coats supplied to this specification may be in progress

A-1.4 The contractor shall inspect the finished coats for compliance with the specification before submitting them to the inspecting authority for final inspection.

A-1.5 Before acceptance, the coats shall have been inspected and tested by the inspecting authority and found to comply with the requirements of the specification.

A-2 DOCUMENTATION

One container of each consignment shall be marked "DOCUMENTS" and in addition to the coats, shall contain the following:

- a) The packaging slip or delivery note;
- b) where applicable the inspection certificate(s);
- c) a copy of the invoice containing the following information:
 - the order number
 - the financial authority number
 - a full description of the consignment, i.e. Item Number, quantity, etc

⁵ SABS Inspection Authority: (Tel) 012 4287371.

Doc No	Item No	Date	Version	Page	No of pages
SAA2007	CO18	April 2014	02.0	19	20

ANNEX B
(Normative)
CKS 129 Colours

Due to the fact that colours can change over a period of time, any colour standard which has been registered for a period of SEVEN YEARS or more shall be considered obsolete. These standards shall then be allocated an archived status (as opposed to current status) and re-registration shall be required.

A. The following scenarios require a submission of three metres of fabric from the successful tenderer:

1. A colour standard is archived.
2. First time registration is required (CKS 129 colour number does not exist).
3. Colour swatch stock at the SABS is no longer available.

B. Requirements for the submission of fabric as identified in A:

1. The colour shall be as agreed upon between the South African Airways and the successful bidder.
2. The fabric shall be used to make new colour swatches which shall be the responsibility of the SABS.
3. The cost of the three metres of fabric shall be incorporated in the relevant bid submission.

HISTORY SHEET				
DOC ISSUE	DATE	AMENDMENTS/HISTORY	CHECKED	
			NAME	INIT.
1	April 2010	First release		
2	April 2014	Align design with new sample New size chart Omit cuff buttons Add waist measurement Add bicep circumference on size 44 Add back width on size 44 Add two lining options New outer material Amend measuring point of sleeve and amend sleeve length		

Doc No	Item No	Date	Version	Page	No of pages
SAA2007	CO18	April 2014	02.0	20	20