

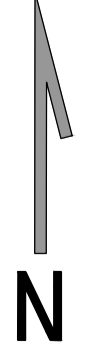
SHEET 2

SHEET 1

KEY PLAN  
N.T.S

FUTURE BUILDINGS,  
NOT PART OF THE SCOPE

FUTURE BUILDINGS,  
NOT PART OF THE SCOPE



HIGH MAST LIGHT FITTINGS CO-ORDINATES			
ID	TYPE	LATITUDE	LONGITUDE
HM 01	2	26° 7'46.35"S	28° 13'51.00"E
HM 02	1	26° 7'47.74"S	28° 13'51.00"E
HM 03	2	26° 7'43.47"S	28° 13'53.82"E
HM 04	1	26° 7'46.43"S	28° 13'47.71"E
HM 05	1	26° 7'48.81"S	28° 13'45.48"E
HM 06	1	26° 7'50.63"S	28° 13'51.37"E
HM 07	1	26° 7'52.07"S	28° 13'46.71"E
HM 08	1	26° 7'54.36"S	28° 13'45.78"E
HM 09	1	26° 7'53.72"S	28° 13'43.91"E
HM 10	1	26° 7'51.16"S	28° 13'44.26"E
HM 11	1	26° 7'51.27"S	28° 13'41.37"E
HM 12	1	26° 7'54.11"S	28° 13'39.80"E
HM 13	1	26° 7'56.64"S	28° 13'38.52"E
HM 14	1	26° 7'58.23"S	28° 13'41.02"E
HM 15	1	26° 7'56.28"S	28° 13'40.56"E
HM 16	1	26° 7'56.09"S	28° 13'44.15"E
HM 17	2	26° 7'53.68"S	28° 13'49.55"E

LUMINAIRE LOCATION SUMMARY				
LUM NO	LABEL	HEIGHT	ORIENT	TILT
1	HM04	32	317,23	0
2	HM04	32	74,49	0
3	HM04	32	192,17	0
4	HM04	32	254,98	0
5	HM04	32	16,52	0
6	HM04	32	133,02	0
7	HM01	32	317,23	0
8	HM01	32	74,49	0
9	HM01	32	192,17	0
10	HM01	32	254,98	0
11	HM01	32	16,52	0
12	HM01	32	133,02	0
13	HM03	32	317,23	0
14	HM03	32	74,49	0
15	HM03	32	192,17	0
16	HM03	32	254,98	0
17	HM03	32	16,52	0
18	HM03	32	133,02	0
19	HM02	32	317,23	0
20	HM02	32	74,49	0
21	HM02	32	192,17	0
22	HM02	32	254,98	0
23	HM02	32	16,52	0
24	HM02	32	133,02	0
25	HM06	32	317,23	0
26	HM06	32	74,49	0
27	HM06	32	192,17	0
28	HM06	32	254,98	0
29	HM06	32	16,52	0
30	HM06	32	133,02	0
31	HM05	32	317,23	0
32	HM05	32	74,49	0
33	HM05	32	192,17	0
34	HM05	32	254,98	0
35	HM05	32	16,52	0
36	HM05	32	133,02	0
37	HM07	32	317,23	0
38	HM07	32	74,49	0
39	HM07	32	192,17	0
40	HM07	32	254,98	0
41	HM07	32	16,52	0
42	HM07	32	133,02	0
43	HM17	32	317,23	0
44	HM17	32	74,49	0
45	HM17	32	192,17	0
46	HM17	32	254,98	0
47	HM17	32	16,52	0
48	HM17	32	133,02	0
49	HM08	32	317,23	0
50	HM08	32	74,49	0
51	HM08	32	192,17	0
52	HM08	32	254,98	0
53	HM08	32	16,52	0
54	HM08	32	133,02	0
55	HM09	32	317,23	0
56	HM09	32	74,49	0
57	HM09	32	192,17	0
58	HM09	32	254,98	0
59	HM09	32	16,52	0
60	HM09	32	133,02	0
61	HM16	32	317,23	0
62	HM16	32	74,49	0
63	HM16	32	192,17	0
64	HM16	32	254,98	0
65	HM16	32	16,52	0
66	HM16	32	133,02	0
67	HM14	32	317,23	0
68	HM14	32	74,49	0
69	HM14	32	192,17	0
70	HM14	32	254,98	0
71	HM14	32	16,52	0
72	HM14	32	133,02	0
73	HM13	32	317,23	0
74	HM13	32	74,49	0
75	HM13	32	192,17	0
76	HM13	32	254,98	0
77	HM13	32	16,52	0
78	HM13	32	133,02	0
79	HM15	32	317,23	0
80	HM15	32	74,49	0
81	HM15	32	192,17	0
82	HM15	32	254,98	0
83	HM15	32	16,52	0
84	HM15	32	133,02	0
85	HM12	32	317,23	0
86	HM12	32	74,49	0
87	HM12	32	192,17	0
88	HM12	32	254,98	0
89	HM12	32	16,52	0
90	HM12	32	133,02	0
91	HM11	32	317,23	0
92	HM11	32	74,49	0
93	HM11	32	192,17	0
94	HM11	32	254,98	0
95	HM11	32	16,52	0
96	HM11	32	133,02	0
97	HM10	32	317,23	0
98	HM10	32	74,49	0
99	HM10	32	192,17	0
100	HM10	32	254,98	0
101	HM10	32	16,52	0
102	HM10	32	133,02	0

HIGH MASTS LIGHTING LAYOUT  
SCALE: 1:1000



**LEGEND:**

ICON	DESCRIPTION
	6 X 463 W BEKA OMNISTAR, AKZO 900 GREY SANDED, COMPLETE WITH DROP-DOWN HIGH MAST POLE OR SIMILAR APPROVED
	6 X 463 W BEKA OMNISTAR, AKZO 900 GREY SANDED, COMPLETE WITH SCISSOR HIGH MAST POLE OR SIMILAR APPROVED
	DISTRIBUTION BOARD
	HIGH MAST LIGHTING KIOSK
	MINIATURE SUBSTATION

**TENDER**

Rev	Date	Description of changes	By
A	01-02-2019	ISSUED FOR TENDER	AR

REVISIONS

Client

**AIRPORTS COMPANY SOUTH AFRICA**

Consultant

**DELTA**  
built environment consultants

P O BOX 35703  
MENLO PARK  
0102

TEL: +27-12-368-1850  
FAX: +27-12-348-4738

APPROVED

THE MASTER HELD AT DELTA BUILT ENVIRONMENT CONSULTANTS BEARS THE ORIGINAL SIGNATURE OF APPROVAL.

DocuSigned by:

SIGNATURE: A. RINGELMANN NAME: DATE: 01/02/2019

Project

**OR TAMBO APRON LIGHTING**

Project Description

**UPGRADE OF THE HIGHMAST LIGHTING**

Drawing Title

**LANDSIDE HIGH MASTS LIGHTING LAYOUT - SHEET 1**

Drawing Units	METERS	Drawing Size	A1
Date	FEBRUARY 2019	Scale	AS SHOWN
Designed By	N. MKASI	Checked By	H. MALAN
Drawn By	N. MKASI	Approved By	A. RINGELMANN
Drawing No.	P18051-TN-02-ELE-901	Rev	A