

CITY OF MBOMBELA

TENDER NUMBER: COM 08/2023

UPGRADING OF MASOYI POLICE STATION TO DINGINDODA ROAD

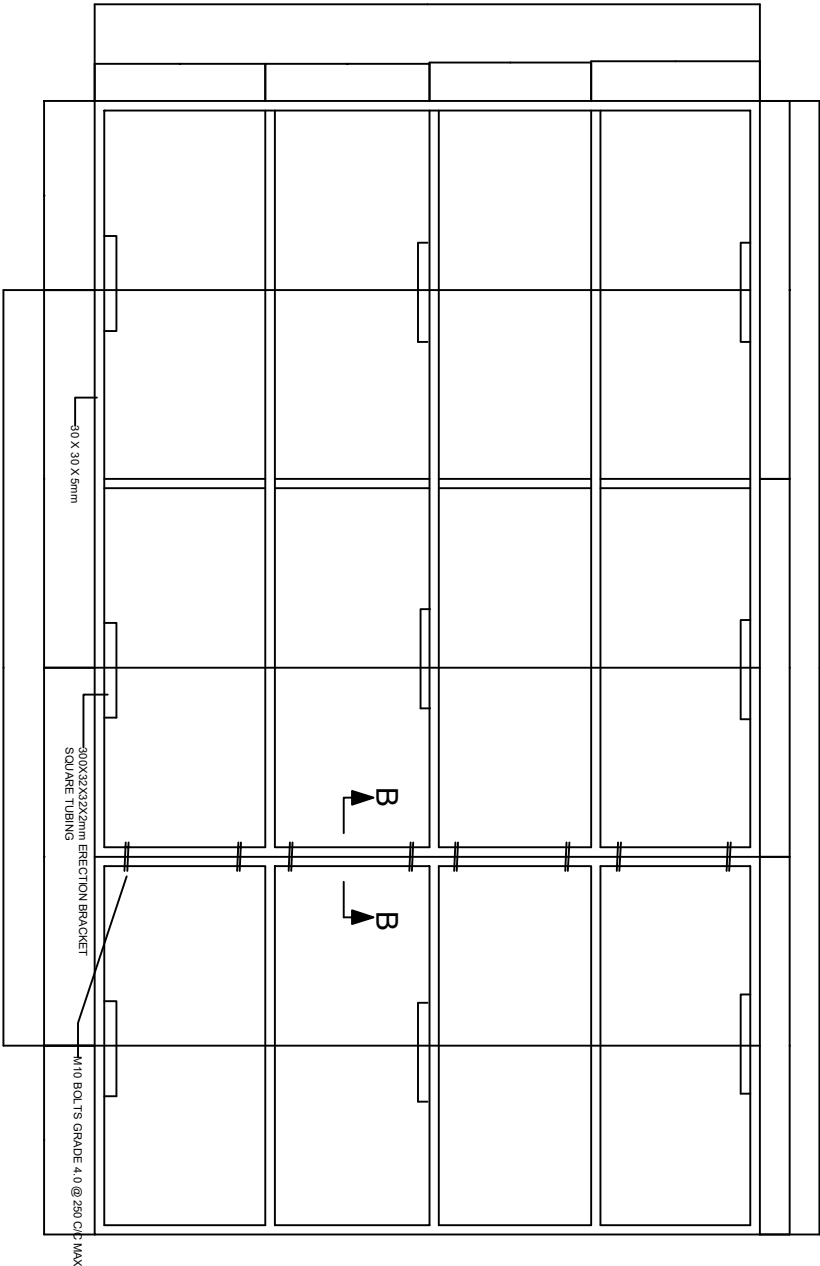
WARD 6

CONSULTING ENGINEERS: TEL. (013) 750 0620

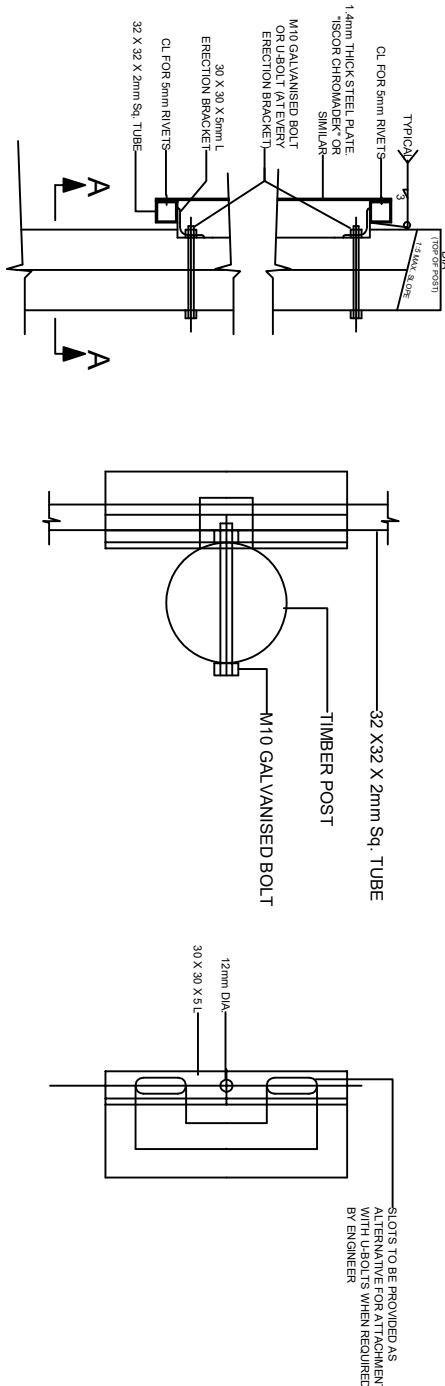
JAMELA CONSULTING ENGINEERING AND PROJECT MANAGEMENT

CONTRACTOR: TEL. (NUMBER)

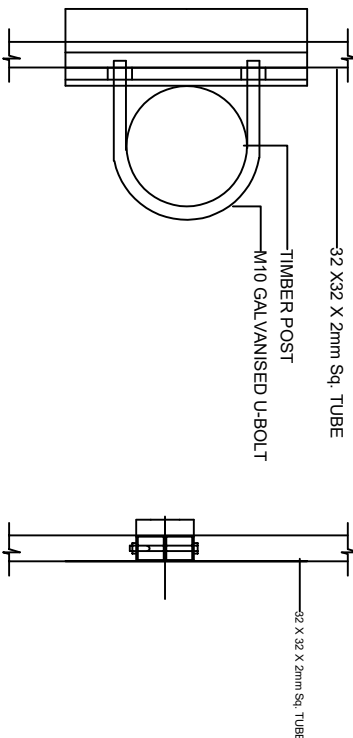
(REGISTERED NAME - SEE NOTE 6 (b))



FRONT ELEVATION  
1:10



REAR SIDE BRACING  
1:10



SIDE  
ELEVATION  
NTS

SECTION A-A  
NTS

ELEVATION OF  
ERECTION BRACKET  
NTS

SECTION A-A  
(WITH U-BOLT)  
NTS

SECTION B-B  
(AT JOINT OF SIGN)  
NTS

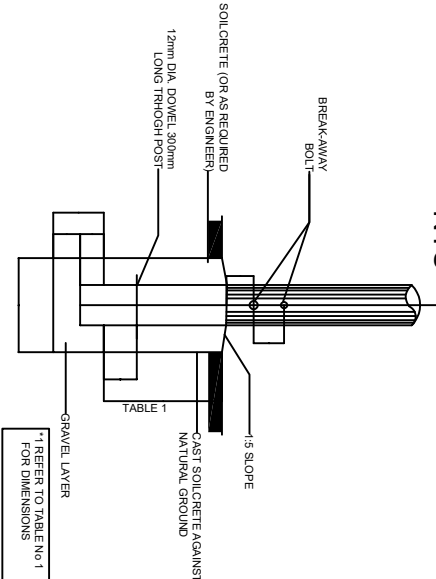
SIDE ELEVATION OF ROAD  
SIGN  
NTS

TABLE 1: DETERMINATION OF POSTS AND FOOTINGS			
ERECTION DETAILS			
TYPE OF POST	U/RIGHT STAY D	B(DIA)	
TIMBER POST AND STAY	100mm	80mm	850mm
TIMBER POST	180mm	-	1000mm
HOLLOW SECTION STEEL POST	100mm x 4mm	-	1450mm

NOTES:

- EMBLEM:  
1. ALL EMBLEMS TO BE DISPLAYED IN FULL COLOUR ON A SEMI MATT BACKGROUND.  
LETTERS AND NUMBERS:  
2. DESCRIPTION: MATT BLACK, SERIES DIN B LETTERS AND NUMBERS ON A SEMI MATT SMOKE GREY BACKGROUND.  
BORDERS:  
3. BORDER: GREEN NON REFLECTORIZED.  
QUANTITY:  
4. TWO SIGN BOARDS, SHALL BE ERECTED AT POSITIONS AS DETERMINED BY THE ENGINEER.  
DESCRIPTION:  
5. DESCRIPTION OF WORK (NUMBER OF KILOMETRES AND TYPE OF WORK, eg. "13.5 km RECONSTRUCTION OF ROAD 2854", "DESCRIPTION START CENTERED ON THE LEFT-HAND SIDE AND THE FIRST 105mm DIMENSION BELOW "NORTHERN"  
6. SAFECED EBLEM ONLY IF CONTRACTOR IS A MEMBER OTHERWISE BLANK.  
7. NEW SPACE LOGO TO BE OBTAINED FROM SPACE, JOHANNESBURG.

DETERMINATION OF BREAK-AWAY HOLES	
POLE DIA (mm)	HOLE DIA (mm)
< 140	NONE
141 - 170	40
171 - 200	50
201 - 225	65



FOUNDATION DETAIL  
NTS

DESIGNED BY:	M.A.S	INFORMATION		APPROVED		NO.	REVISION DETAILS		REV. NO.	DATE	REVISED BY	APPROVED BY	CITY OF MBOMBELA		CONSULTING ENGINEERS		TENDER NUMBER: COM 08/2023		SHEET 1 OF 1	
DRAWN BY:	TM	Full Signatures		For Client		0	ISSUED FOR TENDER PURPOSES		0	FEB. 2023			P. O Box 45		Jameela Consulting Engineering and Project Management		UPGRADING OF MASOYI POLICE STATION TO DINGINDODA ROAD		SCALE: AS SHOWN	
CHECKED BY:	M.A.S	For Consulting Engineer		20 / /									Mbombela		1599/0539423		WARD 6		DRAWING NO:	
ISSUED BY:	M.A.S	Consultants Drawing No.		20 / /									164 Allee van Bergen Street		Tel: (013) 750 0160		INFORMATION BOARD DETAILS		COM 08/2023/014	
													WATERFINDER 1240		Email: <a href="mailto:info@jameela.co.za">info@jameela.co.za</a>				REVISION 00	