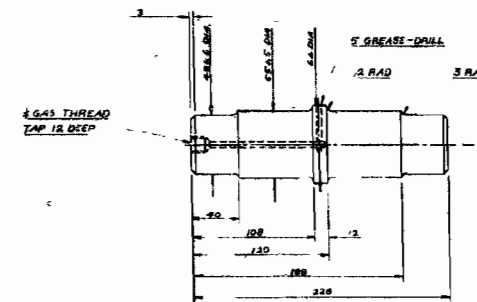
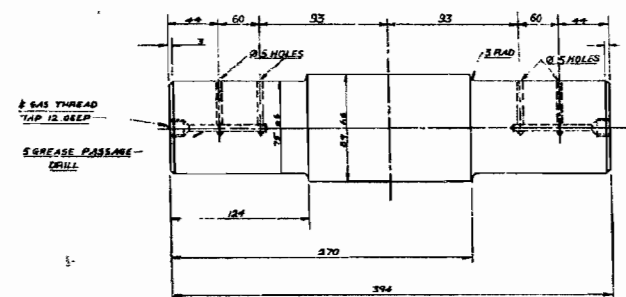


ASSEMBLY OF SUPPORTING ROLLER UNIT



ITEM ④ DETAIL OF SUPPORTING ROLLER SHAFT

MATERIAL - GRADE EN8 STEEL
 ④ 8-OFF REQUIRED

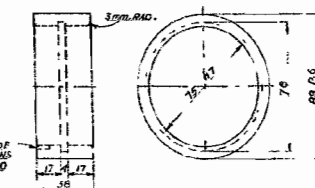


ITEM ⑥ DETAIL OF SIDE BRACKETS

MATERIAL - MILD STEEL
 ⑥ 8-OFF REQUIRED

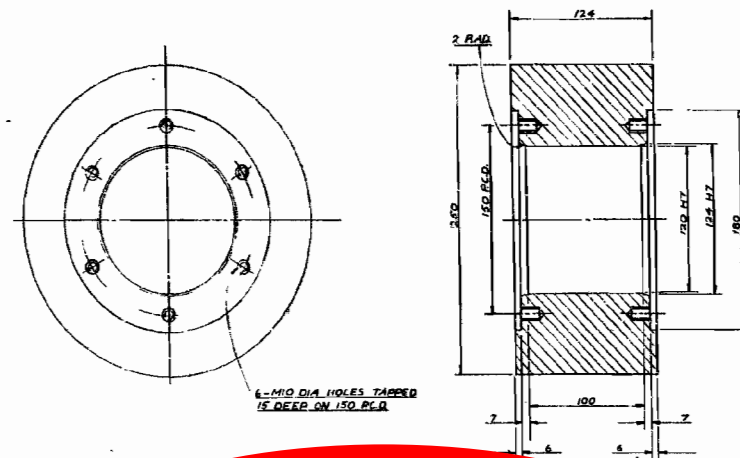
ITEM ⑤ DETAIL OF SWIVEL SHAFT

MATERIAL - GRADE EN8 STEEL
 ⑤ 4-OFF REQUIRED



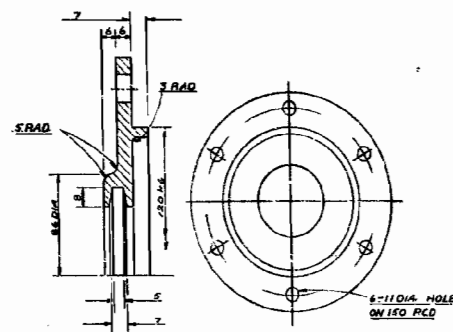
ITEM ⑩ DETAILS OF SLEEVE BEARING

MATERIAL - P.H. BRONZE
 ⑩ 8-OFF REQD.
 TO BE LOCATED ON ITEM 5



ITEM ① DETAIL SUPPORTING ROLLER BODY

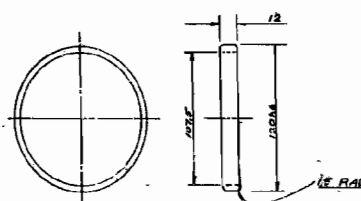
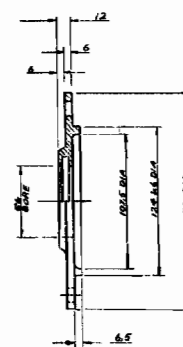
MATERIAL - GRADE EN.33 STEEL
 CASE HARDENED.
 ① 8-OFF REQD



DETAIL OF GROOVE FOR SKF F12 FELT WASHER

ITEM ③ DETAILS OF M.S. COVER

③ 16-OFF REQUIRED



ITEM ③ DETAIL OF M.S. SPACER

③ 8-OFF REQUIRED

SCHEDULE				
ITEM	QUANTITY	DESCRIPTION	MATERIAL	REMARKS
1	8	RIDING ROLLER BODY	EN.33	CASE HARDENED
2	16	END CAP	M.S.	
3	8	SPACER	M.S.	
4	8	ROLLER SHAFT	EN.8	
5	4	SWIVEL SHAFT	EN.8	
6	8	SIDE BRACKET	M.S.	
7	4	ROLLER BRACKET	M.S.	
8	8	SPLIT BEARING	PH. BRONZE	
9	8	BEARING CAP	M.S.	
10	16	SKF BEARING 22311C		
11	96	M 16 SET SCREWS 20 LONG AND WASHERS		
12	16	SKF FELT WASHERS NO. F12		
13	16	M 16 BOLTS AND NUTS 58 LONG & WASHERS		
14	16	GREASE NIPPLES 1/4" G45		
15	8	SLEEVE BEARING	PH. BRONZE	

NOTE: GREASE NIPPLES TO BE GROUPED ON PANEL FIXED TO FOUNDATION STEELWORK TOLERANCES TO BS 4500

QUANTITIES FOR ONE SLAKER

SEE DRG. No. 7943 FOR DETAILS OF ITEMS ⑦ ⑧ ⑨

RAND WATER BOARD

ZUIKE-BOSC - PUMPING 5.411.1.

JME PLANT - No. 3 SLAKER HOUSE

ASSEMBLY AND DETAILS OF SUPPORTING ROLLER UNIT FOR ROTARY SLAKER

DRG. No. 7944

J.H. JAMES
 P. Eng.
 CHIEF ENGINEER

No	CHECKED	DATE	APPROVED	REVISION	DETAILED	DETAILS OF ROTARY SLAKER BED PLATE	REFERENCES	DATE	BY
1	✓	18-7-80	✓	NOT ADD.	7931	GIRTH GEAR AND RIDING RINGS	7931	27/5/1980	MEG G
2	✓	18-7-80	✓	MATERIAL CHANGES	7932	DETAILS OF GEAR SLIDER	7932		
3	✓	18-7-80	✓	QUANTITIES FOR ONE SLAKER	7933	END COVER FOR SLAKER	7933		
4	✓	18-7-80	✓	DETAILS OF ROTARY SLAKER SHELL	7934	DETAILS OF ROTARY SLAKER SHELL	7934		
5	✓	18-7-80	✓	ARMY OF ROTARY SLAKER	7935	ARMY OF ROTARY SLAKER	7935		
6	✓	18-7-80	✓	ASSEMBLY OF SUPPORTING ROLLER	7936	ASSEMBLY OF SUPPORTING ROLLER	7936		
7	✓	18-7-80	✓	DETAILS OF BEARING AND BEARINGS	7937	DETAILS OF BEARING AND BEARINGS	7937		

NTS