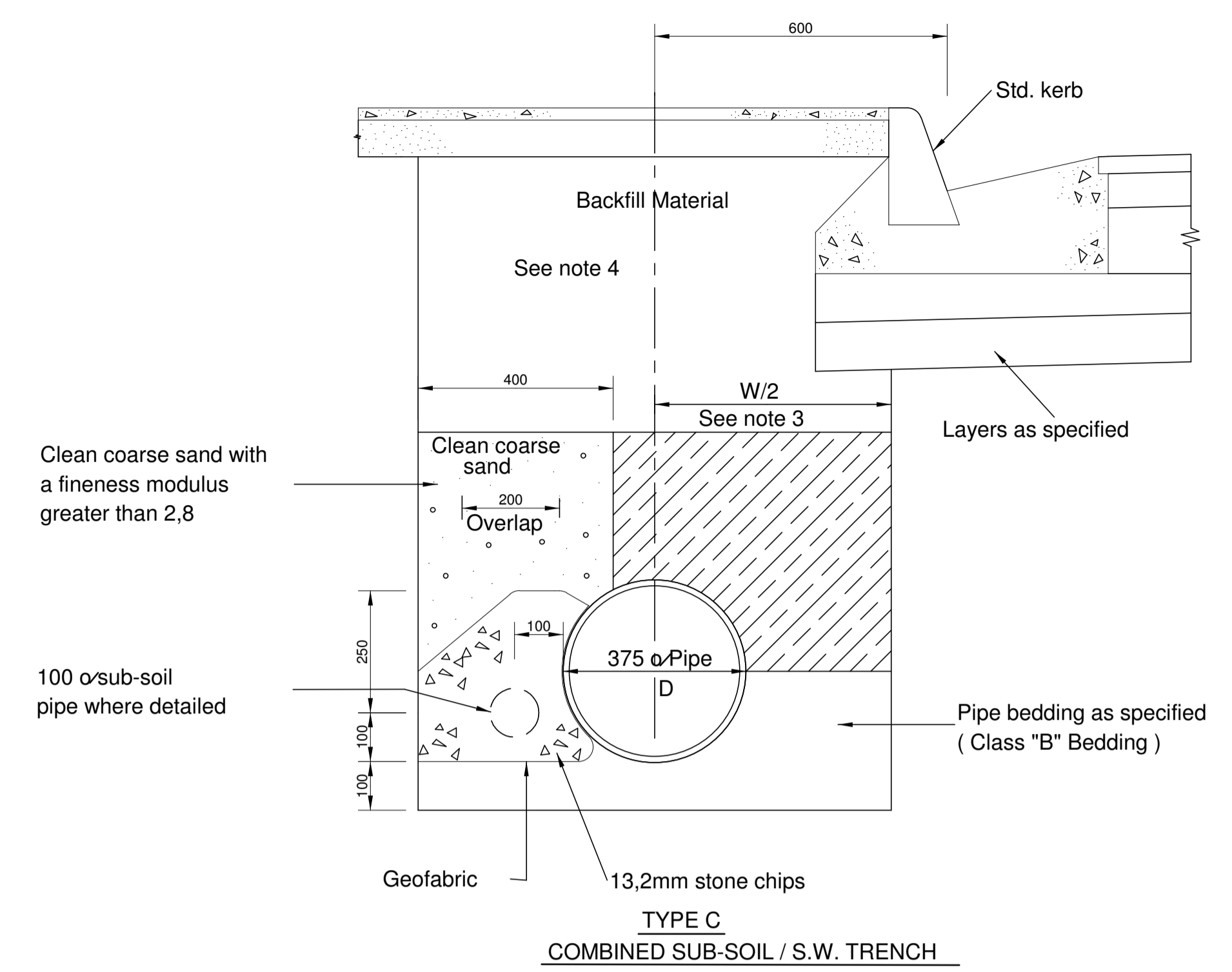
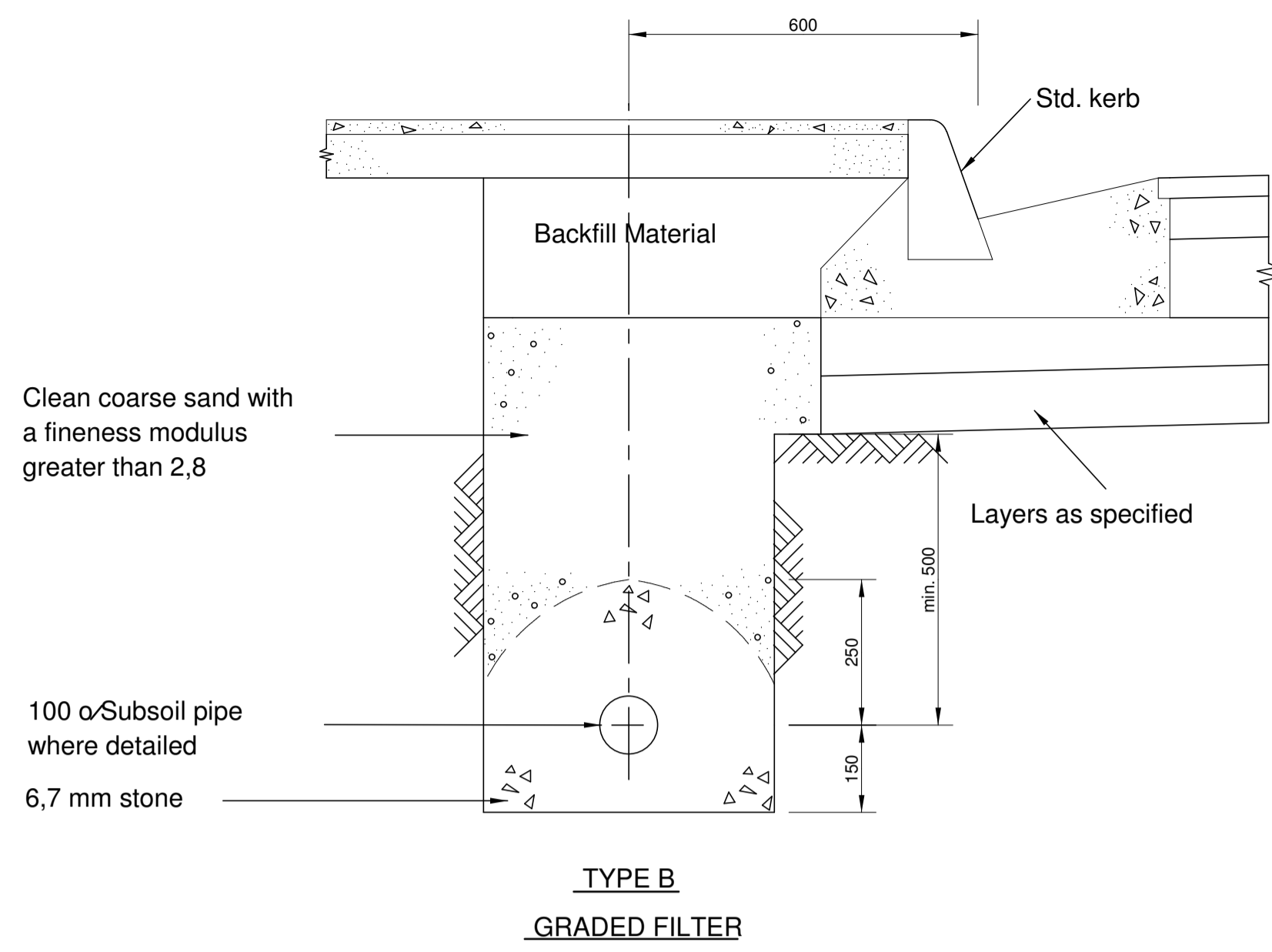
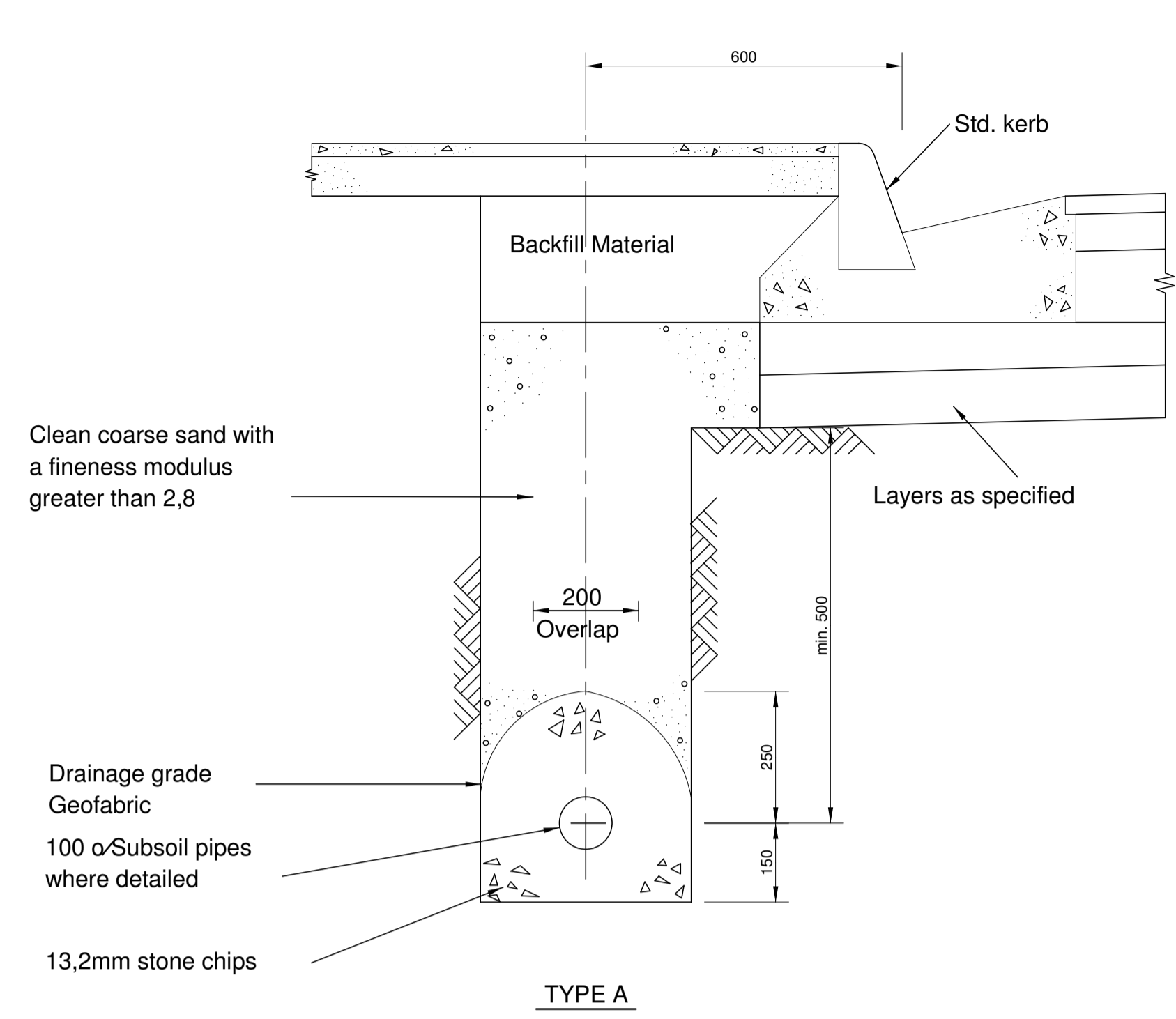
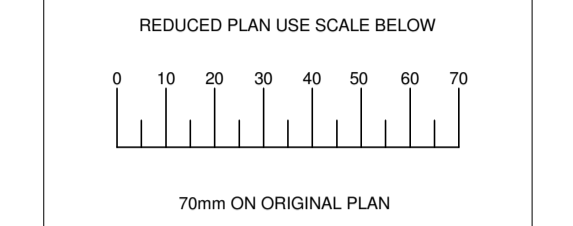


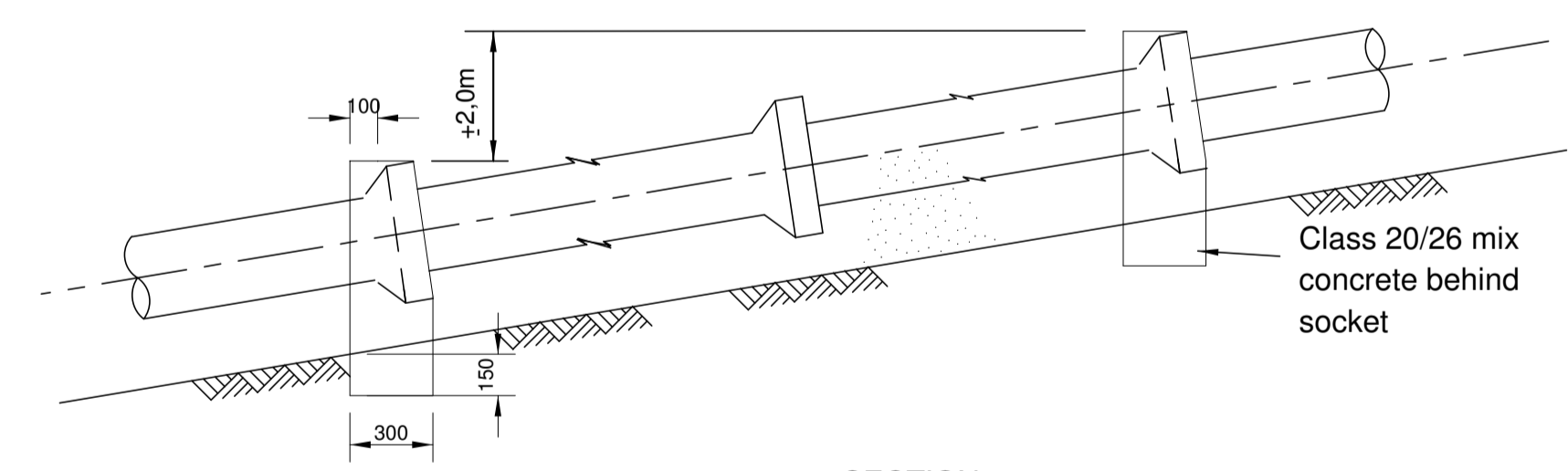
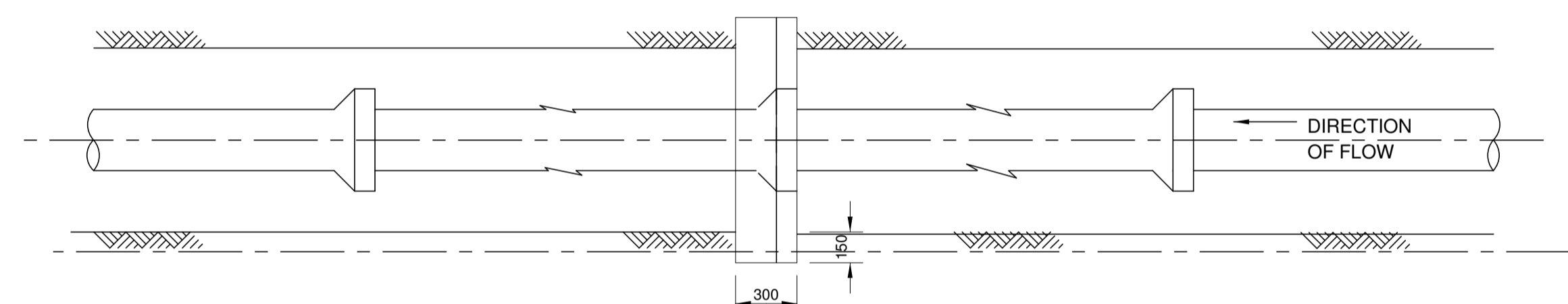


PLAN DESCRIPTION	DWG. NO.
CONTINUED FROM	
CONTINUED ON	
CROSS SECTIONS	
TYPICAL CROSS SECTION	
SURVEY LAYOUT	



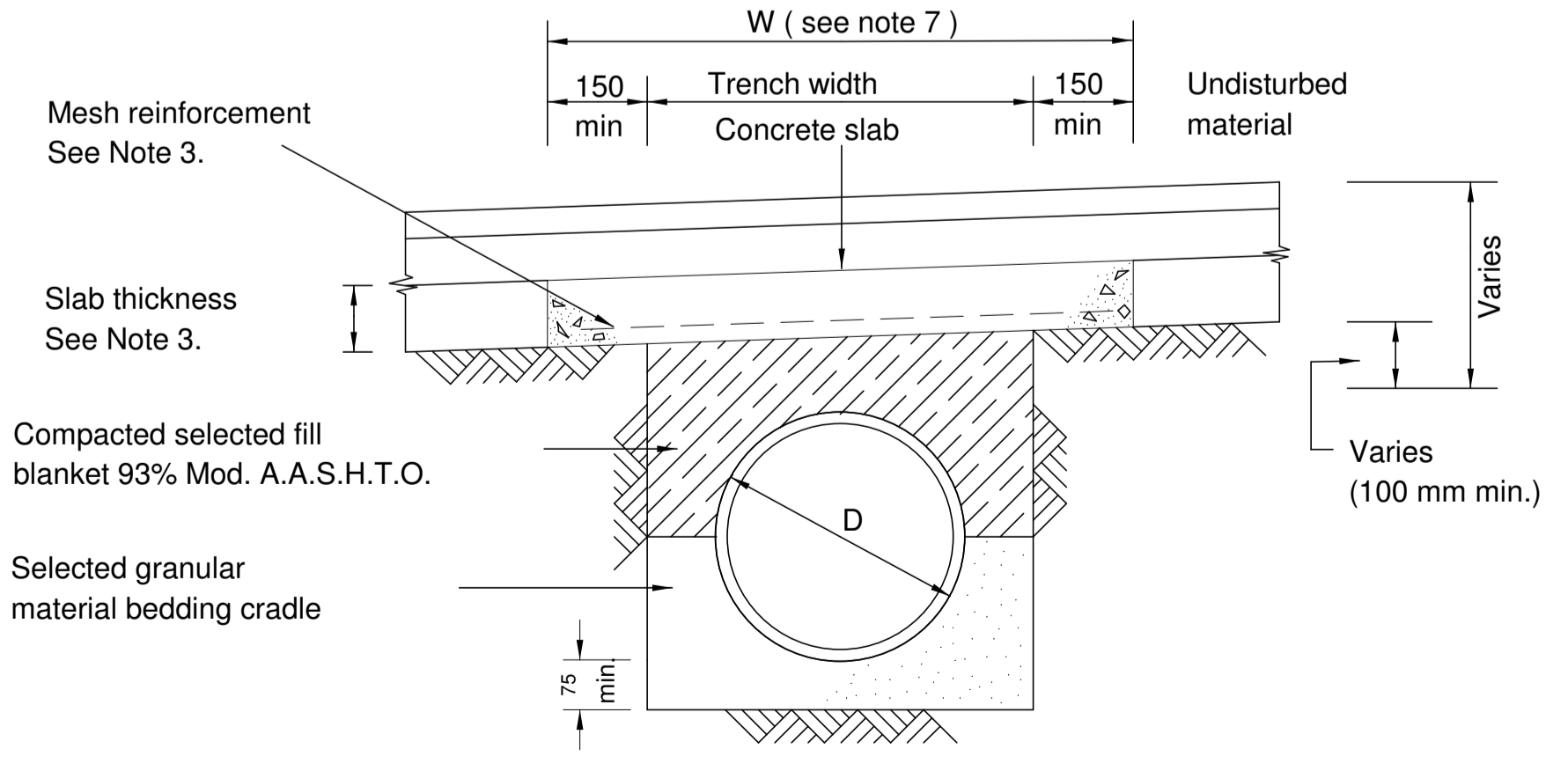
SUB-SOIL DRAIN DETAILS
SCALE: 1:10

- NOTE:
- Sand, stone, geofabric and pipe required for the sub-soil drains are to comply with the requirements of Clause P.G.3 of the specification
 - Unless otherwise specified the sub-soil drains are to be laid at the min. depths indicated. Min grade of the drain is to be 1%.
 - W = Pay width
D = O.D. of pipe
 - Where detailed by Engineer clean coarse sand layer shall be extended to the edge of the road and / or raised to the level indicated for types A and B.



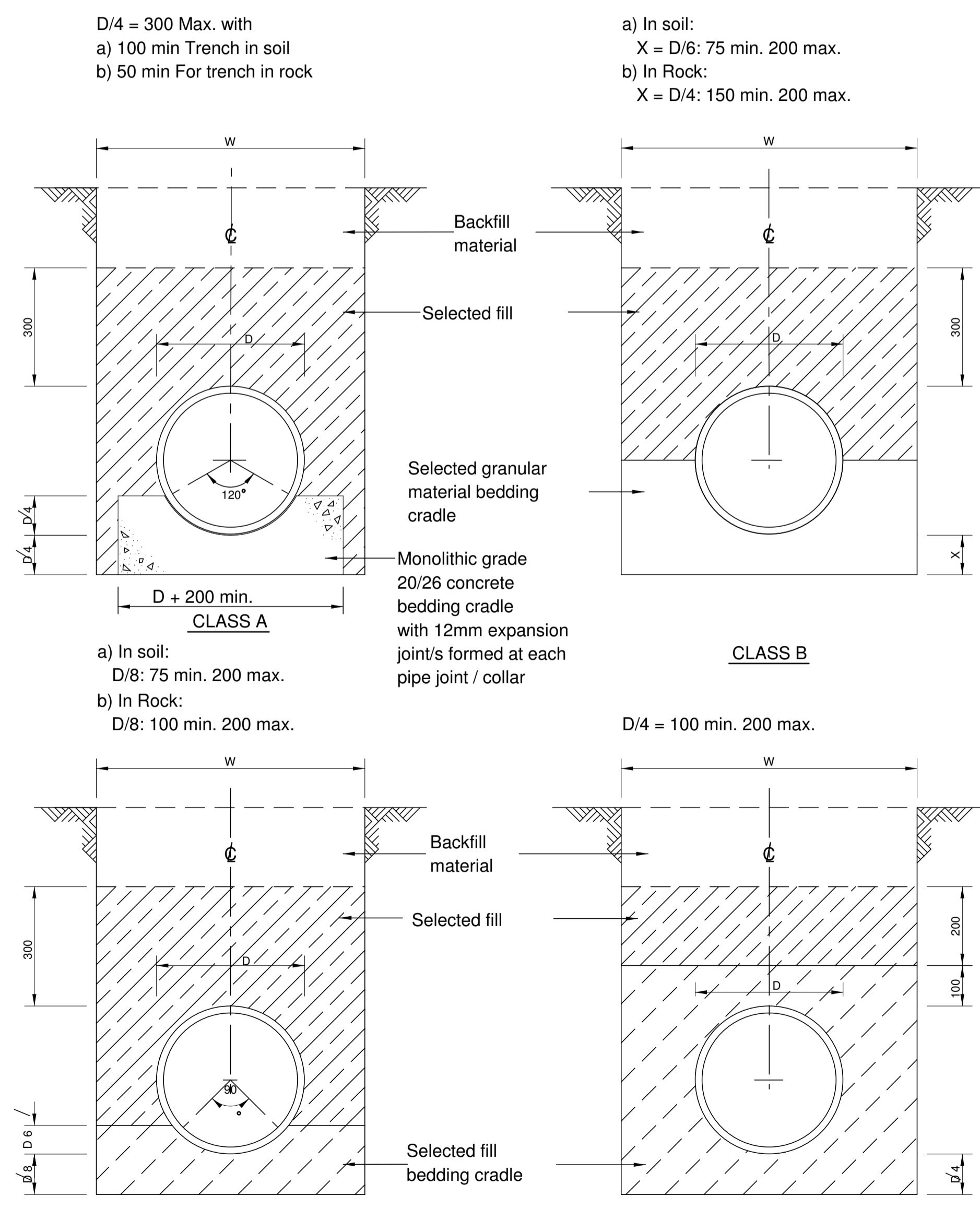
ANCHOR BLOCK DETAILS
SCALE 1:25

- NOTE:
- Sides and bottom of anchor blocks to be embedded to a min. depth of 150mm into undisturbed in situ material.
 - No anchor blocks required where flexible pipes are used ie. H.D. u.p.v.c. pipes.



DETAILS OF PIPE PROTECTION FOR REDUCED DEPTH OF COVER
SCALE 1:10

- NOTE
- This detail applies where cover is less than 300mm in servitudes and less than 600mm in road reserves.
 - Class "B" Bedding is shown.
 - Slab thickness and reinforcing details will be confirmed by the engineer.
 - Slab is to consist of grade 20/26 concrete.
 - Cover to reinforcement is to be 35mm.
 - Construction joints are to be formed in the slab at intervals not exceeding 5.0m.
 - W=Trench width + 300mm in undisturbed material.



PIPE BEDDING DETAILS
SCALE: 1:10

Revision	Date	Description
NOTE: No construction work to commence until land and servitude acquisitions have been completed		
Acquisitions completed		
NORTH POINT		
UNDERGROUND SERVICES CHECKED		
S.W. DRAINS	DATE	SIGNATURE
SEWERS		
WATER MAINS		
G.P.O. CABLES		
ELECTRIC CABLES		
S.A.R. CABLES		
E.S.C. CABLES		
OIL PIPE LINE		

Contract No.	
Project Title	
STANDARD DRAWING	
Drawing Title	
SUB-SOIL DRAIN, PIPE BEDDING AND PIPE PROTECTION DETAILS	
Scales	DATE OF ISSUE
AS SHOWN	FEBRUARY 1990
Designed	Date
G.J.P.	1995-12-05
Checked	Drawn
	W.R.BURNETT
Manager RD(N)	
Director - Roads	
R.A.Moore	Executive Director
Drawing No	Sheet
38575	
	of Sheets