

GENERAL NOTES

This drawing is issued for Electrical purposes only, and should be read in conjunction with the Electrical Specification. Setting out of Electrical and Electronic accessories are to be as indicated on Architects details.

Refer to Architects and Structural Drawings for all building dimensions, latest building revisions and services.

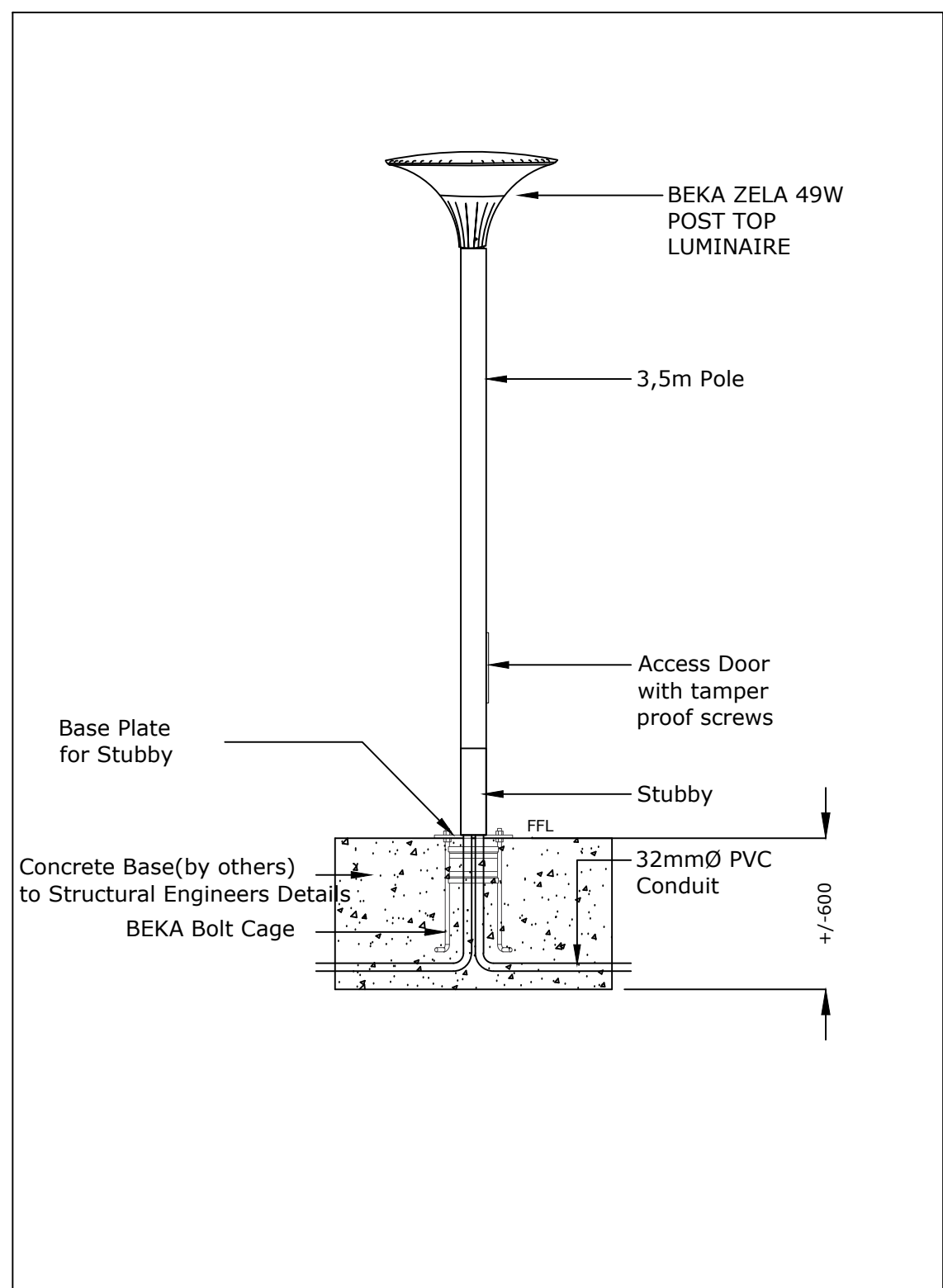
Do not scale this drawing.

All work to comply with relevant Standards, Codes of Practice, Specification and Regulations.

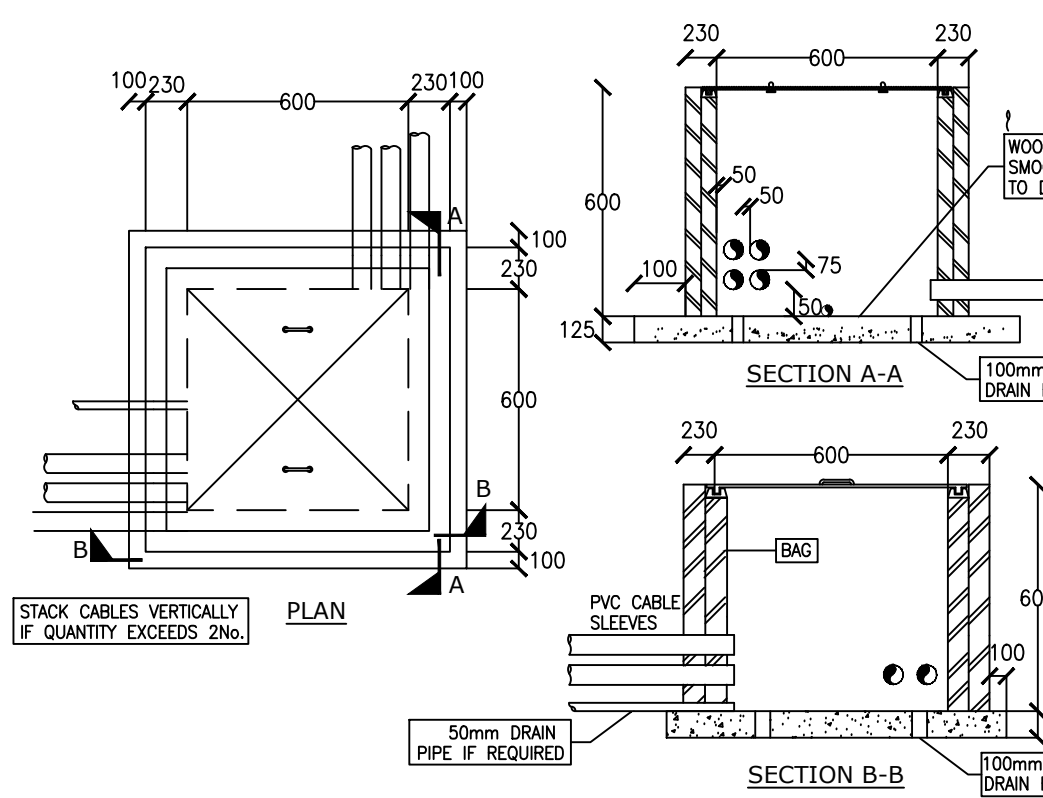
Notwithstanding anything to the contrary, all rights reserved. No part of this drawing may be reproduced in any material form (including photo-copying or storage in any medium or by electronic means and whether or not transiently or incidentally to some other use of this drawing). In addition, this drawing may not be used for any purpose or reason other than for which it was originally issued, without written permission of the author.

DRAWING NOTES

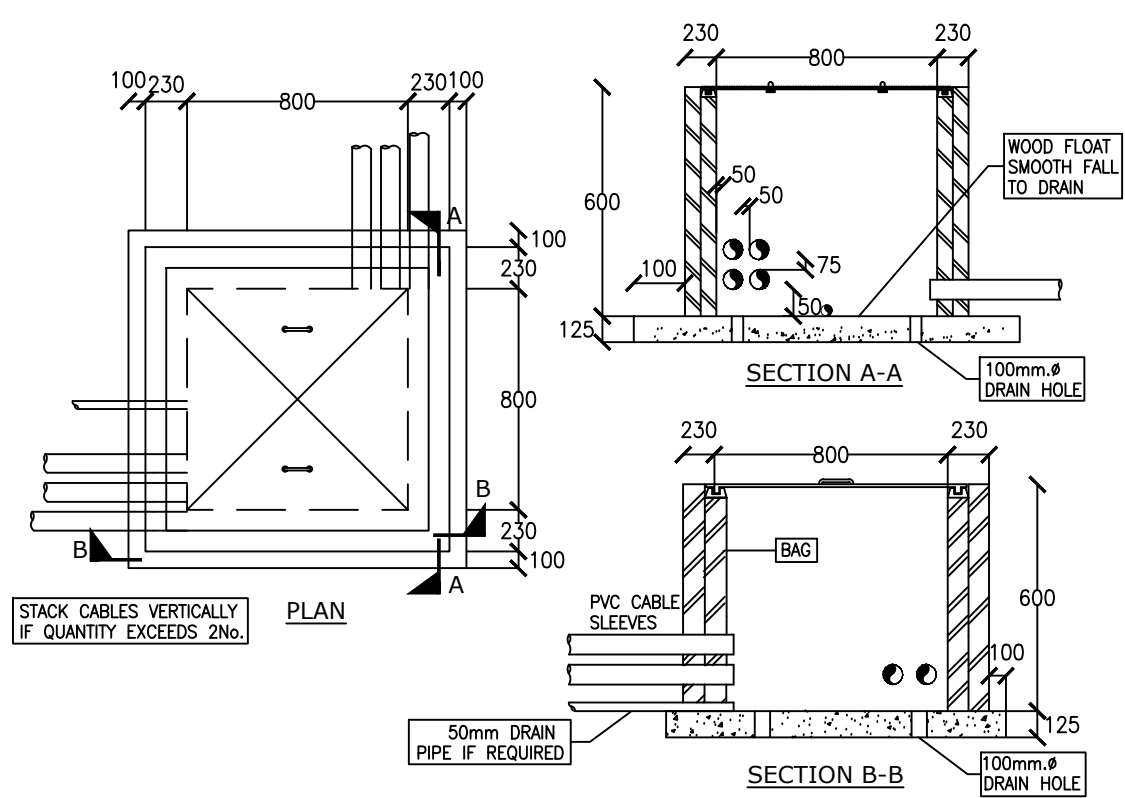
- 800x800mm WIDE ELECTRICAL MANHOLE
- 600x600 MANHOLE FOR DATA SERVICES



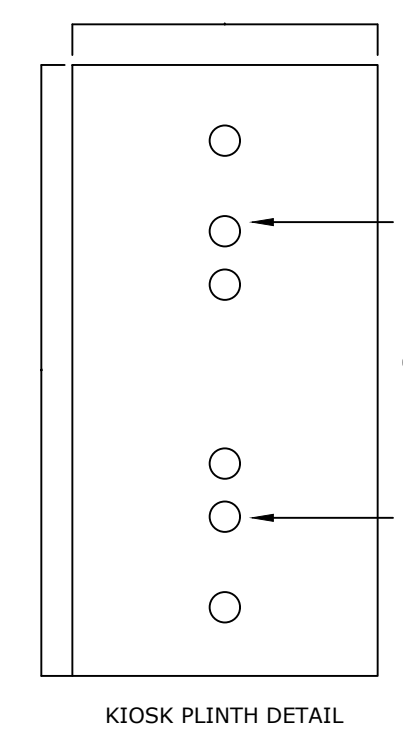
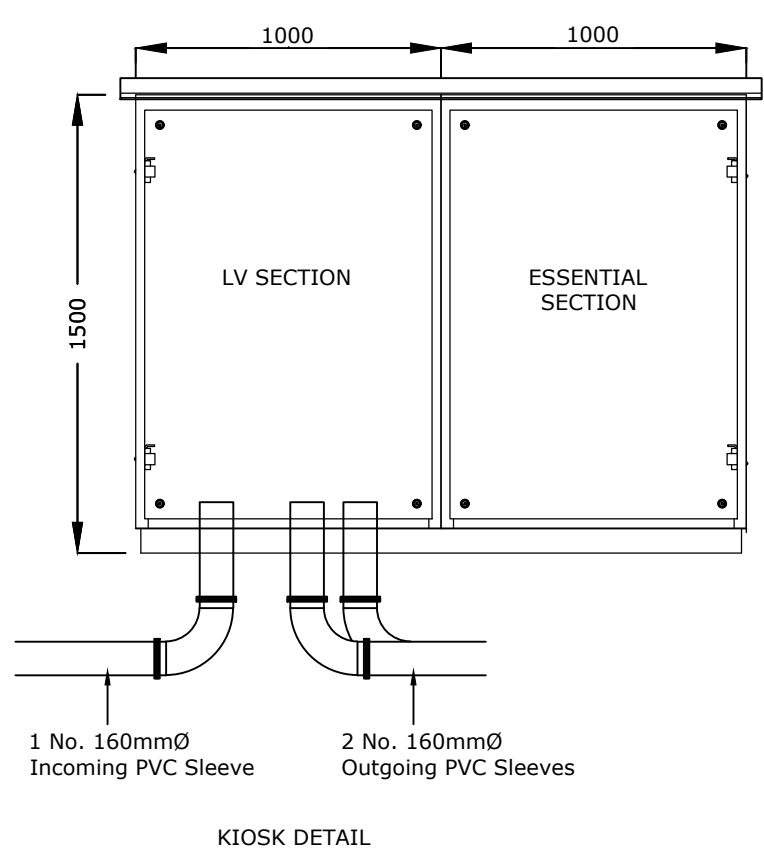
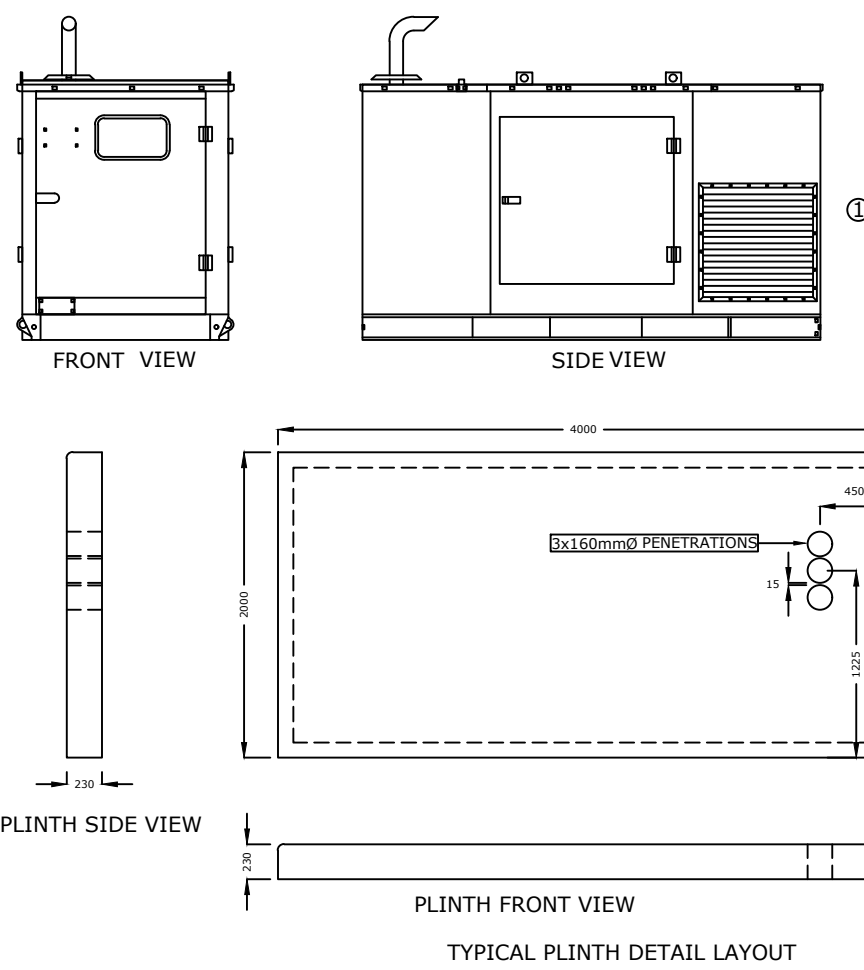
POLE MOUNTED LIGHT DETAIL  
SCALE: NTS



STANDARD MANHOLE FOR TELKOM CABLING



STANDARD MANHOLE FOR L.V. CABLING



REV	DATE	BY	REVISIONS
A	11/11/24	CW	Revised to Clients Request
B	13/09/24	CW	Original Issue

Approved in Principle  
Justin Mckelvie-King  
Pr Eng : 20120548



PROJECT/SERVICES	0
0	Makhaza Police Station Electrical Installation
DATE	11/11/24
ENGINEER	MK
DRAWN BY	CW
CHECKED BY	11/200
SCALE	A0
PROJECT No.	32307
DRAWING No.	001
SHEET	1
REV	A

NOTES: (1) – Contractor to ensure max distance between draw boxes 20 metres notwithstanding anything to contrary. (2) – Draw boxes required after every second 90 deg. bend or 180 deg. total of slow bends. (3) – All unwired conduits to be provided with draw wires. These will be withdrawn and checked at random. (4) – Cast in conduits to be spaced 35mm. minimum.	100x100 CONDUIT BOX	ROUND DRAW BOX	ROUND CONDUIT BOX FOR: DM – CAMERA, DM – ACCESS CONTROL, DM – COMMUNICATION/INTERCOM, DM – BACK GROUND MUSIC, DM – ELECTRIC LOCK/STRIKE, DM – SHOCK DETECTOR, DM – HEAT DETECTOR	20mm. DIA. CONDUIT, 25mm. DIA. CONDUIT, 32mm. DIA. CONDUIT, 50mm. DIA. CONDUIT, SECTION OF CONDUIT OMITTED FOR CLARITY, SURF, TWIN AND EARTH, CABLE ROUTE	OVERHEAD CAST-IN, OVERHEAD ON SURFACE OR LAID ON CEILING, FLOOR SLAB CAST-IN, POWER SHORTING, CABLE SLEEVE, CABLE TRAY/LADDER	SQUARE GALV. STEEL DRAW TRAY SIZE AS SHOWN, TELEPHONE JUNCTION BOX, INTERCOM JUNCTION BOX, DATA/COMMS JUNCTION BOX, SECURITY, ETC. JUNCTION BOX, DISTRIBUTION BOARD POSITION, DB-1 BOARD DESIGNATION NUMBER	16AMP. SWITCHED SOCKET OUTLET (SSO), 250. DOUBLE 16AMP. SSO, 16AMP. SSO ON PEDESTAL, 16AMP. CLEAN SSO WITH RED COVER PLATE, SQUARE EARTH AND FUSE TOP, 16AMP. CLEAN SSO WITH RED COVER PLATE, SQUARE EARTH AND FUSE TOP ON PEDESTAL, 3 PHASE SSO, 16AMP. SQUARE PIN SSO, 5AMP. 3 PIN UNSWITCHED SOCKET OUTLET	INTERMEDIATE LIGHT SWITCH, SINGLE LEVER ONE WAY LIGHT SWITCH, TWO WAY LIGHT SWITCH, LIGHT SWITCH WITH MOTION SENSOR	FLUORESCENT LUMINAIRE, BULBHEAD/DOWNLIGHTER, ETC., WALL MOUNTED LUMINAIRE, POLE MOUNTED LUMINAIRE	TWO POLE ISOLATOR, THREE POLE ISOLATOR, FOUR POLE ISOLATOR, HOT WATER CYLINDER, AIR CONDITIONING	TELEPHONE POINT, TELEPHONE POINT ON PEDESTAL, DIRECT OUTSIDE LINE TELEPHONE POINT (CALL BOX), TV OUTLET, DATA/COMMS OUTLET, INTERCOM REDIFFUSION SPEAKER POSITION	BELL PUSH, BELL OUTLET, SIGN POINT, CLOCK OUTLET, PHOTOCELL	REFERENCE TO QUANTITY i.e. 3No. REFERENCE TO A DETAIL i.e. DETAIL 2, REFERENCE TO AN ELECTRICAL NOTE i.e. NOTE 4, REFERENCE TO A STANDARD DRAWING i.e. STANDARD DRAWING No.34	CABLE NUMBER – REFER CABLE SCHEDULE FOR DETAILS, LUMINAIRE TYPE i.e. TYPE 'B' – REFER LUMINAIRE SCHEDULE
---	---------------------	----------------	--	---	---	---	---	---	---	--	---	---	---	--