

HYGIA BOXED C/W FITTINGS  
MEDICAL BASIN

703600WH  
CHYBABFI-2CO  
6005826060836

585x435mm wall hung medical basin with 2 tapholes, supplied with 1/4 turn wrist action mixer, CP waste, standing overflow tube, 2 fixing screws, plugs and CP caps.

OPTIONAL ITEMS

- 308  
32mm basin waste, unslotted
- 340  
CP Bottle trap

SPARES FOR PRODUCT

- 703602WH  
Hygia basin
- 515/055H-21  
Medical mixer
- 8630Z000  
CP standing overflow tube
- 8513Z000  
Hygia fixing screw set

INSTALLATION INSTRUCTIONS

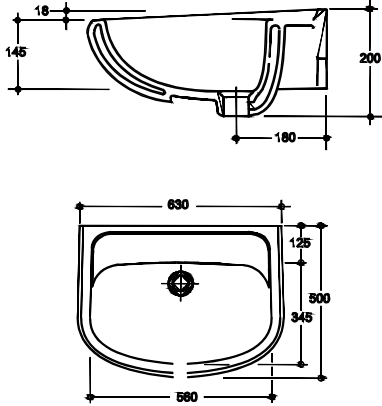
- Determine position where basin is to be installed.
- Mark position of holes to be drilled for fixing screws.
- Drill holes to correct size and depth.
- Place basin against holes for push-through installation for concrete, solid bricks and hollow blocks.
- Insert screws and tighten with number 10 hexagonal spanner.
- Press the c.p. caps onto head of screw and over the exposed section of the plug

up against basin splashback.

NOTE: Maximum load bearing capacity of the fixing is achieved only if the screw projects through the plug tip by at least 1 x screw diameter, and the plug expands in the wall with its whole anchoring depth. Tiles and plaster are considered to be non-load bearing.

SPECIAL RECOMMENDATION

Always use silicone sealant or equivalent between basin and finished wall surface area for secure and neat installation.



SOLA 630  
MEDICAL BASIN

702800WH  
CSO63JNN-2CO0413  
6005826069037

630x500mm wall hung rectangular medical basin with no tapholes, integrated overflow or chainstay hole.

OPTIONAL ITEMS

- 8448Z000  
10mm fixing bolt set
- 8131Z300  
Sola/Weaver basin bracket
- 308  
32mm basin waste unslotted
- 340  
CP Bottle trap
- 8630Z000  
CP standing overflow tube

INSTALLATION INSTRUCTIONS

The basin may be installed by alternative methods:

- Bolted to the wall using two 10 mm bolts (code 8448Z0).  
or
- Using a concealed wall bracket (code 8131Z3), and three 10 mm bolts (code 8448Z0).

Option 1:

Place basin level against finished wall surface at correct height and mark fixing hole positions. Remove basin and drill holes. Attach bolts to wall, fit basin, and secure. NOTE: Do not over tighten.

Option 2:

Place basin level against finished wall surface at correct height and mark fixing hole positions. Remove basin and drill holes. Loosely attach concealed bracket to basin waste. Attach bolts to wall, fit basin and secure bracket to basin waste.

SPECIAL RECOMMENDATION

Always use silicone sealant or equivalent between basin and finished wall surface area for secure and neat installation.

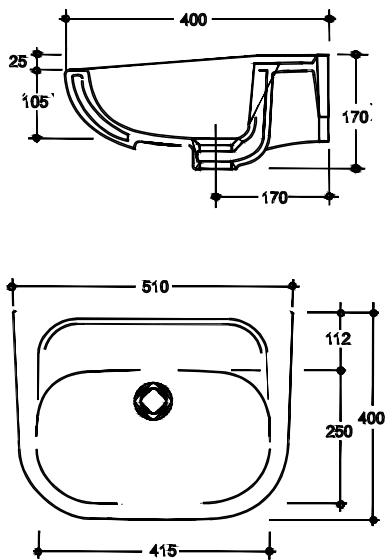
MEDICAL - TAPS - MEDICAL MIXERS - CHROME  
CODE: 515/055-21



Medical elbow-action, wall-type mixer, chrome.

Includes: 1/4" turn ceramic disc, 1/2" BSP male inlet, aerated swan-neck swivel outlet, fixed centre bent

inlet connections, and hook for swivel outlet. SANS 226 Type 2.



SOLA 510  
MEDICAL BASIN

703700WH  
CSO51JNN-2CO0413  
6005826002461

510x400mm wall hung semi-rectangular medical basin with no tapholes, integrated overflow or chainstay hole.

OPTIONAL ITEMS

- 8448Z000  
10mm fixing bolt set
- 8131Z300  
Sola/Weaver basin bracket
- 308  
32mm basin waste unslotted
- 340  
CP Bottle trap
- 8630Z000  
CP standing overflow tube

INSTALLATION INSTRUCTIONS

The basin may be installed by alternative methods:

- Bolted to the wall using two 10 mm bolts (code 8448Z0).  
or
- Using a concealed wall bracket (code 8131Z3), and three 10 mm bolts (code 8448Z0).

Option 1:

Place basin level against finished wall surface at correct height and mark fixing hole positions. Remove basin and drill holes. Attach bolts to wall, fit basin, and

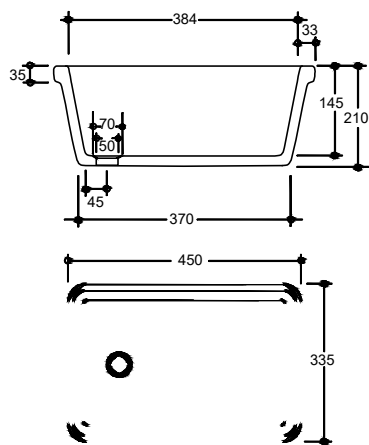
secure. NOTE: Do not over tighten.

Option 2:

Place basin level against finished wall surface at correct height and mark fixing hole positions. Remove basin and drill holes. Loosely attach concealed bracket to basin waste. Attach bolts to wall, fit basin and secure bracket to basin waste.

SPECIAL RECOMMENDATION

Always use silicone sealant or equivalent between basin and finished wall surface area for secure and neat installation.



LAB SINK 450  
LABORATORY SINK

234501WH  
CLA43J43-2CO0344  
6005826070385

450 x 335 x 180mm rectangular sink with centre end waste outlet and no integrated overflow.

OPTIONAL ITEMS

- 8790Z000  
38mm Acid resistant waste
- 8794Z000  
32mm CP waste
- 8102Z000  
Wall hung Sink brackets x2
- 8109Z000  
Under mount sink brackets x2

INSTALLATION INSTRUCTIONS

Sink may be installed by alternative methods:

- Fitted to the wall on two semi-concealed brackets (code8102Z000)  
or
- Fixed underneath a slab using two adjustable underslung brackets (code 8109Z000)

Option 1:

Position brackets and mark fixing holes. Fix brackets to wall and place sink into position. Always use silicone sealant or equivalent between the brackets and the underside of the sink for a secure and neat installation.

Option 2:

Position sink under rectangular cut-out of slab ensuring that overhang is even all round (±10 mm). With sink correctly positioned, mark hole positions of brackets. Remove sink and drill previously marked bracket screw holes. Attach bracket to slab. Apply a liberal layer of silicone sealant or equivalent to contact area of sink rim and slab. Tighten securing stud so as to ensure a watertight seal between sink and underside of slab. Wipe off excess sealant and allow to dry.



BMS Electronic Stamping Space

Revisions:

The copyright of this drawing vests in the eThekweni Municipality as represented by the Architecture Department, and may not be reproduced without the written approval of the D/H Architecture.



ENGINEERING UNIT  
Architecture Department

166 K.E. Masinga Road, Durban 4001  
P.O. Box 1548, Durban 4000  
Tel: 031 311 7783 Fax: 031 311 7111  
www.durban.gov.za

ETHEKWINI MUNICIPALITY  
HUMAN SETTLEMENTS,  
ENGINEERING SERVICES &  
TRANSPORT AUTHORITY CLUSTER  
ENGINEERING UNIT  
ARCHITECTURE DEPARTMENT

Project Description :

**CSA 3254 : NEW OCCUPATIONAL  
HEALTH & SAFETY PARKHOME  
CLINIC ON ERF 912: 151  
CANEHAVEN DRIVE, CANESIDE  
DEPOT, PHOENIX**

Contract No.

Drawing Title :

- **SANITARY SCHEDULE**

Designed LD	Checked
Drawn LD	Approved

Scale/s N/A	Paper Size: A2	Date August 2021
CSA3254-03		Revision