

ITEM NO.

BT DRW. REV_0

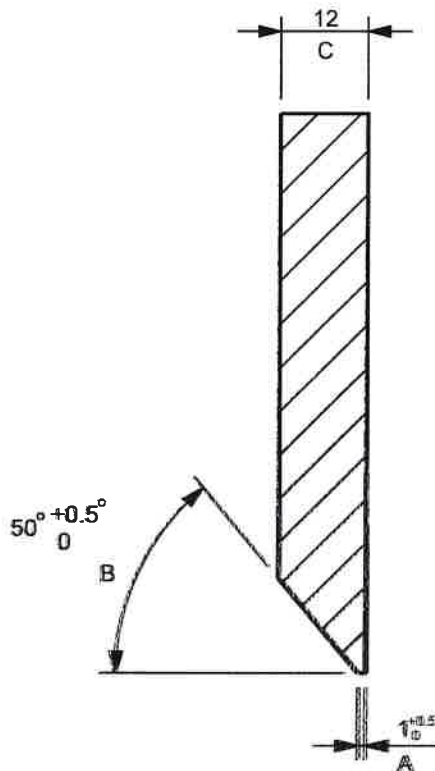
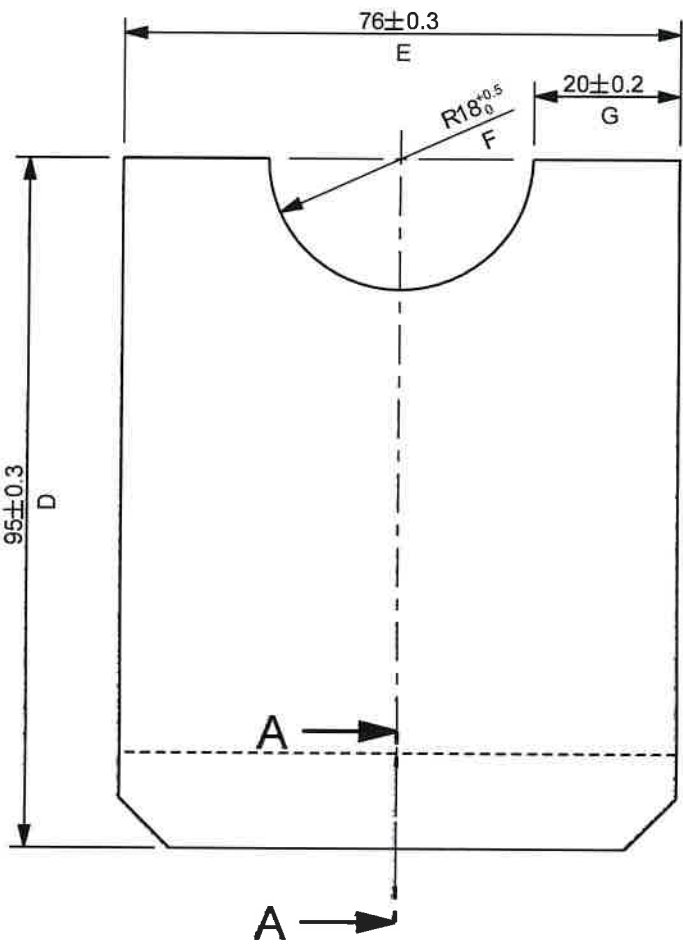
FOR UNTOLERANCED DIMENSIONS SEE ISO 2768-1: DESIGNATION
FOR GENERAL TOLERANCE ON WELDED CONSTRUCTIONS SEE ISO 13920: CLASS

M
A E

2D STATUS IN WORK

GENERAL TOLERANCES	
ISO 14405-1 DIMENSIONAL TOLERANCING	ISO 13920-B F WELDMENTS
ISO 8015 TOLERANCING	EN 10243-F FORGING
ISO 2768-mK-E LINEAR DIMENSIONS, SYMMETRY	DIN 6935 COLD BENDING
ISO 9013-422 THERMAL CUTTING	DIN 6930-m STAMPING
ISO 8062 CASTING	

GROUP 10.6



SECTION A-A



12.5 ✓



PART EDGES ISO 13715

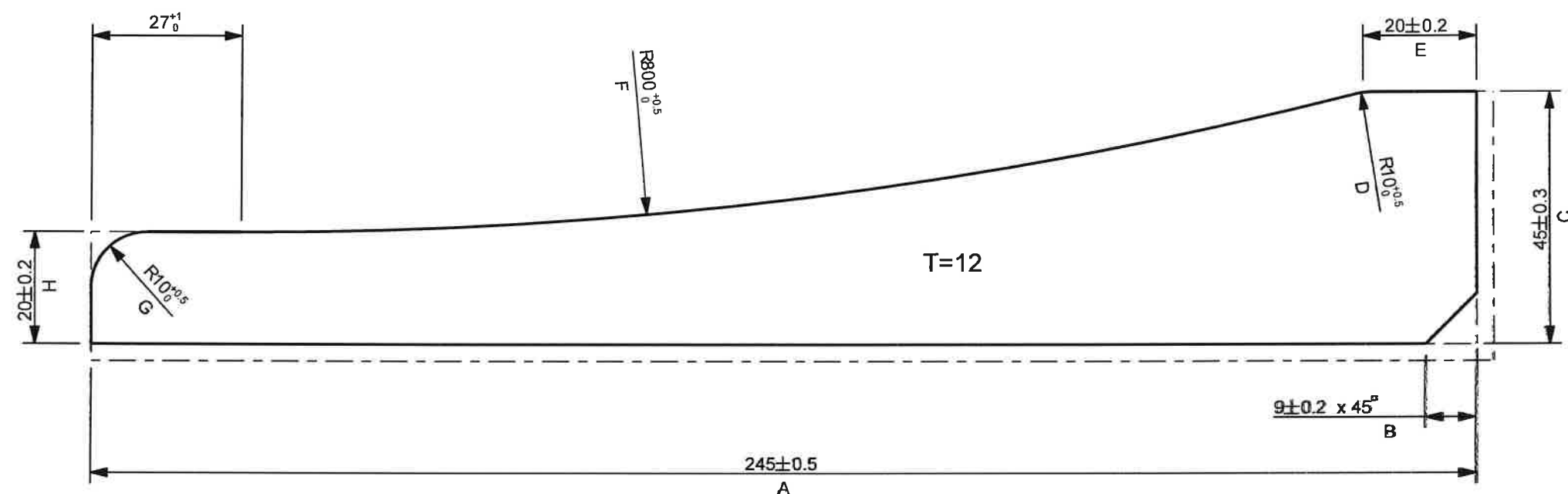
REV 3 DRAWING UPDATED PD_PEL_KLP_DRW_23E 2016-02-19 M.J.M.
REV 2 TOLERANCES ALTERED PD_PEL_KLP_DRW_23E 2015-11-11 M.J.M.
REV 1 LETTERS ADDED FOR SOP. PD_PEL_KLP_DRW_23E. 2015-08-13 M.J.M.
AMENDMENTS
MASS 0.59 Kg

<p>COPYRIGHT THIS DRAWING TOGETHER WITH THE COPYRIGHT IS THE PROPERTY OF TRANSNET THIS DRAWING OR ANY PART THEREOF IS NOT TO BE COPIED OR OTHERWISE REPRODUCED OR USED FOR MANUFACTURE OR ANY OTHER PURPOSE WITHOUT THE WRITTEN PERMISSION FROM CHIEF EXECUTIVE, TRANSNET ENGINEERING</p>	ASSEMBLY DRG No. -	DRAWN M.J.M.	<p>KILNER PARK LOCOMOTIVES</p> <p>RIB</p> <p>DERAILMENT PROTECTION BAR</p>	<p>MATERIAL</p> <p>STEEL SANS 50025 GRADE S355 J2+N PLATE 12 95 x 76</p>
	CLASS 23E	CHECKED M.N.N.		
	TYPE ELECTRIC LOCOMOTIVE	APPROVED B.E.D.		
	DATE -	SCALE 1:1		
A-3 PROJECTION	DOCUMENT REFERENCE No. PD_PEL_KLP_DRW_23E	TRANSNET ENGINEERING	No. MAC 66A0208	REV. -3

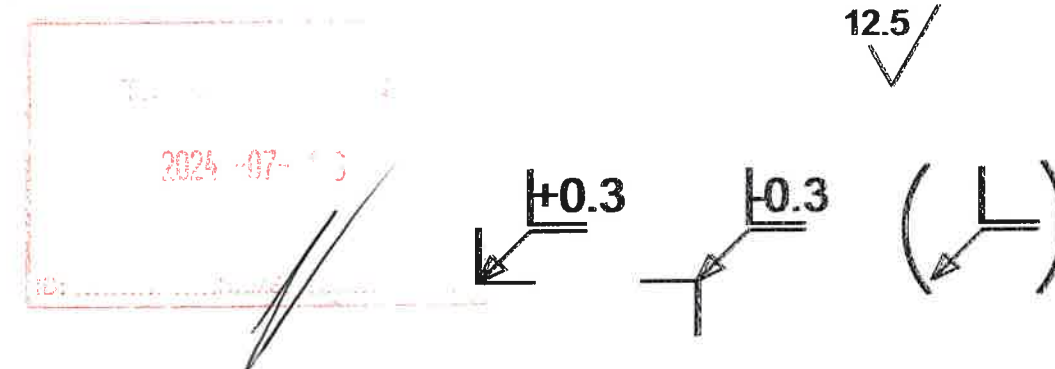
ITEM NO.		FOR UNTOLERANCED DIMENSIONS SEE ISO 2768-1:		DESIGNATION		M		2D STATUS		IN WORK	
BT DRW. REV_0		FOR GENERAL TOLERANCE ON WELDED CONSTRUCTIONS SEE ISO 13920: CLASS				A E		GENERAL TOLERANCES			
GROUP 10. 6						ISO 14405-1		ISO 13920-B F			
						DIMENSIONAL TOLERANCING		WELDMENTS			
						ISO 8015		EN 10243-F			
						TOLERANCING		FORGING			
						ISO 2768-mK-E		DIN 6935			
LINEAR DIMENSIONS, SYMMETRY		COLD BENDING									
ISO 9013-422		DIN 6930-m									
THERMAL CUTTING		STAMPING									
ISO 8062											
CASTING											
						REV_1					
						TOLERANCES ALTERED					
						PD_PEL_KLP_DRW_23E					
						2015-11-11 M.J.M.					
						AMENDMENTS					
MASS		0.63 Kg									
COPYRIGHT		ASSEMBLY DRG No. -		DRAWN		M.J.M.		KILNER PARK		LOCOMOTIVES	
THIS DRAWING TOGETHER WITH THE COPYRIGHT				CHECKED		M.N.N.		RIB		MATERIAL	
IS THE PROPERTY OF				APPROVED		B.E.D.					
TRANSNET				DATE							
THIS DRAWING OR ANY PART THEREOF IS NOT		CLASS 23E		TYPE ELECTRIC LOCOMOTIVE		SCALE		1:1		STEEL	
TO BE COPIED OR OTHERWISE REPRODUCED										SANS 50025 GRADE S355 J2+N	
OR USED FOR MANUFACTURE OR ANY OTHER										PLATE 12	
PURPOSE WITHOUT THE WRITTEN PERMISSION										95 x 76	
FROM										SHEET 1 OF 1	
CHIEF EXECUTIVE,										TRANSNET ENGINEERING	
TRANSNET ENGINEERING										No.	
A-3 PROJECTION		DOCUMENT REFERENCE No.		PD_PEL_KLP_DRW_23E		TRANSNET ENGINEERING		CUT_66A0208		REV. -1	

ITEM NO.		FOR UNTOLERANCED DIMENSIONS SEE ISO 2768-1:		DESIGNATION		M		2D STATUS		IN WORK	
BT DRW. REV_B		FOR GENERAL TOLERANCE ON WELDED CONSTRUCTIONS SEE ISO 13920: CLASS				A E		GENERAL TOLERANCES			
GROUP 10.7								ISO 14405-1 DIMENSIONAL TOLERANCING		ISO 13920-B F WELDMENTS	
								ISO 8015 TOLERANCING		EN 10243-F FORGING	
								ISO 2768-mK-E LINEAR DIMENSIONS, SYMMETRY		DIN 6935 COLD BENDING	
								ISO 9013-422 THERMAL CUTTING		DIN 6930-m STAMPING	
								ISO 8062 CASTING			
								PART EDGES ISO 13715			
<p>COPYRIGHT THIS DRAWING TOGETHER WITH THE COPYRIGHT IS THE PROPERTY OF TRANSNET THIS DRAWING OR ANY PART THEREOF IS NOT TO BE COPIED OR OTHERWISE REPRODUCED OR USED FOR MANUFACTURE OR ANY OTHER PURPOSE WITHOUT THE WRITTEN PERMISSION FROM CHIEF EXECUTIVE, TRANSNET ENGINEERING</p>		ASSEMBLY DRG No. -		DRAWN		M.J.M.		KILNER PARK		LOCOMOTIVES	
				CHECKED		M.N.N.		PLATE DERAILMENT PROTECTION BAR		MATERIAL STEEL SANS 50025 GRADE S355 J2+N PLATE 12 300 x 240	
		CLASS 23E		APPROVED		B.E.D.					
		TYPE ELECTRIC LOCOMOTIVE		DATE		-					
				SCALE		1:1		SHEET 1 OF 1			
A-3		PROJECTION		DOCUMENT REFERENCE No.		PD_PEL_KLP_DRW_23E		TRANSNET ENGINEERING		No. MAC 66A0209	
										REV. -	

REV. -1



NOTE:
FOR CUTTING, REFER TO DRAWING NO: CUT_66A0210



REV_1
TOLERANCES ALTERED
PD_PEL_KLP_DRW_23E
2015-02-08 M.J.M.

AMENDMENTS
MASS 0.66 Kg

ITEM NO.		FOR UNTOLERANCED DIMENSIONS SEE ISO 2768-1:		DESIGNATION		2D STATUS		IN WORK			
BT DRW. REV_0		FOR GENERAL TOLERANCE ON WELDED CONSTRUCTIONS SEE ISO 13920: CLASS		M A E		GENERAL TOLERANCES					
GROUP 10.8		ISO 14405-1 DIMENSIONAL TOLERANCING		ISO 13920-B F WELDMENTS							
		ISO 8015 TOLERANCING		EN 10243-F FORGING							
		ISO 2768-mK-E LINEAR DIMENSIONS, SYMMETRY		DIN 6935 COLD BENDING							
		ISO 9013-422 THERMAL CUTTING		DIN 6930-m STAMPING							
		ISO 8062 CASTING									
PART EDGES ISO 13715											
COPYRIGHT THIS DRAWING TOGETHER WITH THE COPYRIGHT IS THE PROPERTY OF TRANSNET THIS DRAWING OR ANY PART THEREOF IS NOT TO BE COPIED OR OTHERWISE REPRODUCED OR USED FOR MANUFACTURE OR ANY OTHER PURPOSE WITHOUT THE WRITTEN PERMISSION FROM CHIEF EXECUTIVE, TRANSNET ENGINEERING		ASSEMBLY DRG No. -		DRAWN		M.J.M.		KILNER PARK LOCOMOTIVES RIB DERAILMENT PROTECTION BAR		MATERIAL STEEL SANS 50025 GRADE S355 J2+N PLATE 12 248 x 48	
				CHECKED		M.N.N.					
		CLASS 23E		APPROVED		B.E.D.					
		TYPE ELECTRIC LOCOMOTIVE		DATE		-					
				SCALE		1:1		SHEET 1 OF 1			
A-3 PROJECTION		DOCUMENT REFERENCE No.		PD_PEL_KLP_DRW_23E		TRANSNET ENGINEERING		No.		REV. -2	
								CUT 66A0210			

ITEM NO.		FOR UNTOLERANCED DIMENSIONS SEE ISO 2768-1:		DESIGNATION		M		2D STATUS		IN WORK	
BT DRW. REV_0		FOR GENERAL TOLERANCE ON WELDED CONSTRUCTIONS SEE ISO 13920: CLASS		A		E		GENERAL TOLERANCES			
GROUP 10.9		ISO 14405-1		ISO 13920-B F							
		DIMENSIONAL TOLERANCING		WELDMENTS							
		ISO 8015		EN 10243-F							
		TOLERANCING		FORGING							
		ISO 2768-mK-E		DIN 6935							
LINEAR DIMENSIONS, SYMMETRY		COLD BENDING									
ISO 9013-422		DIN 6930-m									
THERMAL CUTTING		STAMPING									
ISO 8062											
CASTING											

REV 3
TOLERANCE REMOVED
FROM PLATE THICKNESS
PD_PEL_KLP_DRW_23E
2016-07-21 S.W.S

REV 2
TOLERANCES ALTERED
PD_PEL_KLP_DRW_23E
2015-11-11 M.J.M.

REV 1
LETTERS ADDED FOR
SOP.
PD_PEL_KLP_DRW_23E.
2015-08-13 M.J.M.

AMENDMENTS

MASS 2.19 Kg

COPYRIGHT THIS DRAWING TOGETHER WITH THE COPYRIGHT IS THE PROPERTY OF TRANSNET THIS DRAWING OR ANY PART THEREOF IS NOT TO BE COPIED OR OTHERWISE REPRODUCED OR USED FOR MANUFACTURE OR ANY OTHER PURPOSE WITHOUT THE WRITTEN PERMISSION FROM CHIEF EXECUTIVE, TRANSNET ENGINEERING		ASSEMBLY DRG No. -		DRAWN M.J.M.		KILNER PARK LOCOMOTIVES		MATERIAL	
				CHECKED M.N.N.		RIB		STEEL	
		CLASS 23E		APPROVED B.E.D.		CONSOLE PROTECTION BAR		SANS 50025 GRADE S355 J2+N	
		TYPE ELECTRIC LOCOMOTIVE		DATE -		DERAILMENT PROTECTION BAR		PLATE 16	
				SCALE 1:2		SHEET 1 OF 1		260 x 111	
A-3 PROJECTION		DOCUMENT REFERENCE No.		PD_PEL_KLP_DRW_23E		TRANSNET ENGINEERING		No.	
								MAC 66A0302	
								REV. - 3	

ITEM NO.		FOR UNTOLERANCED DIMENSIONS SEE ISO 2768-1:		DESIGNATION		M		2D STATUS		IN WORK	
BT DRW. REV_0		FOR GENERAL TOLERANCE ON WELDED CONSTRUCTIONS SEE ISO 13920: CLASS		A		E		GENERAL TOLERANCES			
GROUP 10.9		ISO 14405-1		ISO 13920-B F							
		DIMENSIONAL TOLERANCING		WELDMENTS							
		ISO 8015		EN 10243-F							
		TOLERANCING		FORGING							
		ISO 2768-mK-E		DIN 6935							
LINEAR DIMENSIONS, SYMMETRY		COLD BENDING		ISO 9013-422		DIN 6930-m					
THERMAL CUTTING		STAMPING		ISO 8062							
CASTING											
<div>REV 3 DIMENSIONS ALTERED PD_PEL_KLP_DRW_23E 2017-08-21 S.W.S.</div> <div>REV 2 DIMENSIONS ALTERED PD_PEL_KLP_DRW_23E 2017-07-25 S.W.S.</div> <div>REV 1 TOLERANCES ALTERED PD_PEL_KLP_DRW_23E 2015-11-11 M.J.M.</div> <div>AMENDMENTS</div> <div>MASS 2.54 Kg</div>											
COPYRIGHT THIS DRAWING TOGETHER WITH THE COPYRIGHT IS THE PROPERTY OF TRANSNET THIS DRAWING OR ANY PART THEREOF IS NOT TO BE COPIED OR OTHERWISE REPRODUCED OR USED FOR MANUFACTURE OR ANY OTHER PURPOSE WITHOUT THE WRITTEN PERMISSION FROM CHIEF EXECUTIVE, TRANSNET ENGINEERING		ASSEMBLY DRG No. -		DRAWN M.J.M.		KILNER PARK		LOCOMOTIVES		MATERIAL	
				CHECKED M.N.N.		RIB				STEEL	
		CLASS 23E		APPROVED B.E.D.		CONSOLE PROTECTION BAR				SANS 50025 GRADE S355 J2+N	
		TYPE ELECTRIC LOCOMOTIVE		DATE -		DERAILMENT PROTECTION BAR				PLATE 16	
				SCALE 1:2						260 x 111	
A-3 PROJECTION		DOCUMENT REFERENCE No.		PD_PEL_KLP_DRW_23E		TRANSNET ENGINEERING		No.		CUT 66A0302	
										REV. -3	