

GENERAL NOTES

This drawing is issued for Electrical purposes only, and should be read in conjunction with the Electrical Specification. Setting out of Electrical and Electronic accessories are to be as indicated on Architects details.

Refer to Architects and Structural Drawings for all building dimensions, latest building revisions and services.

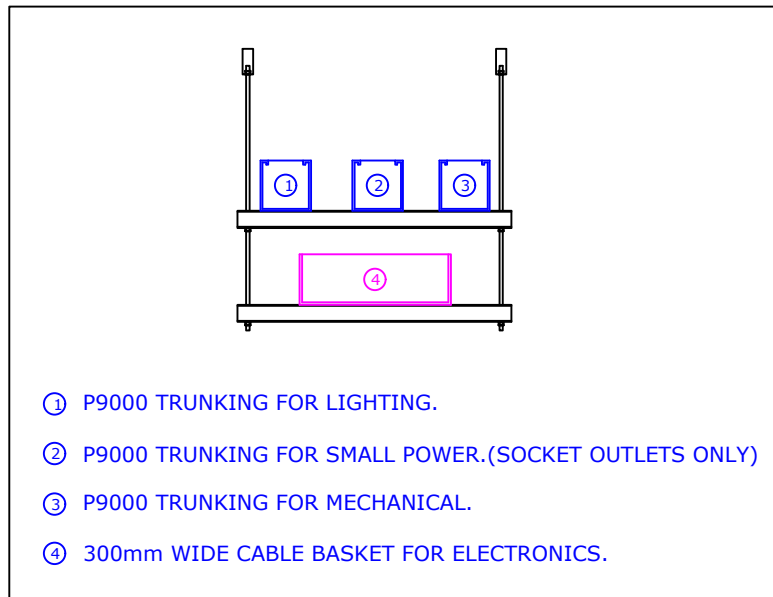
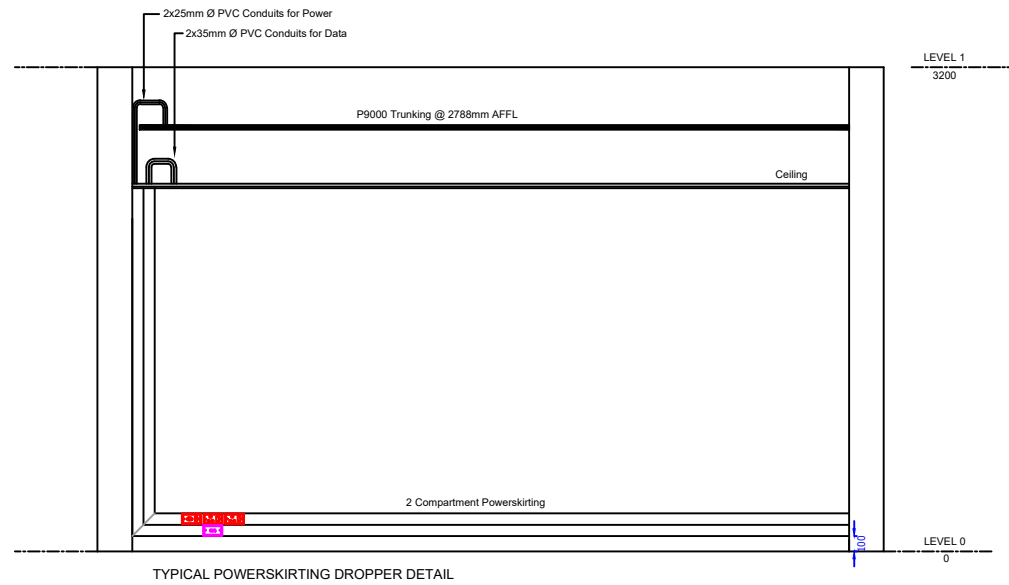
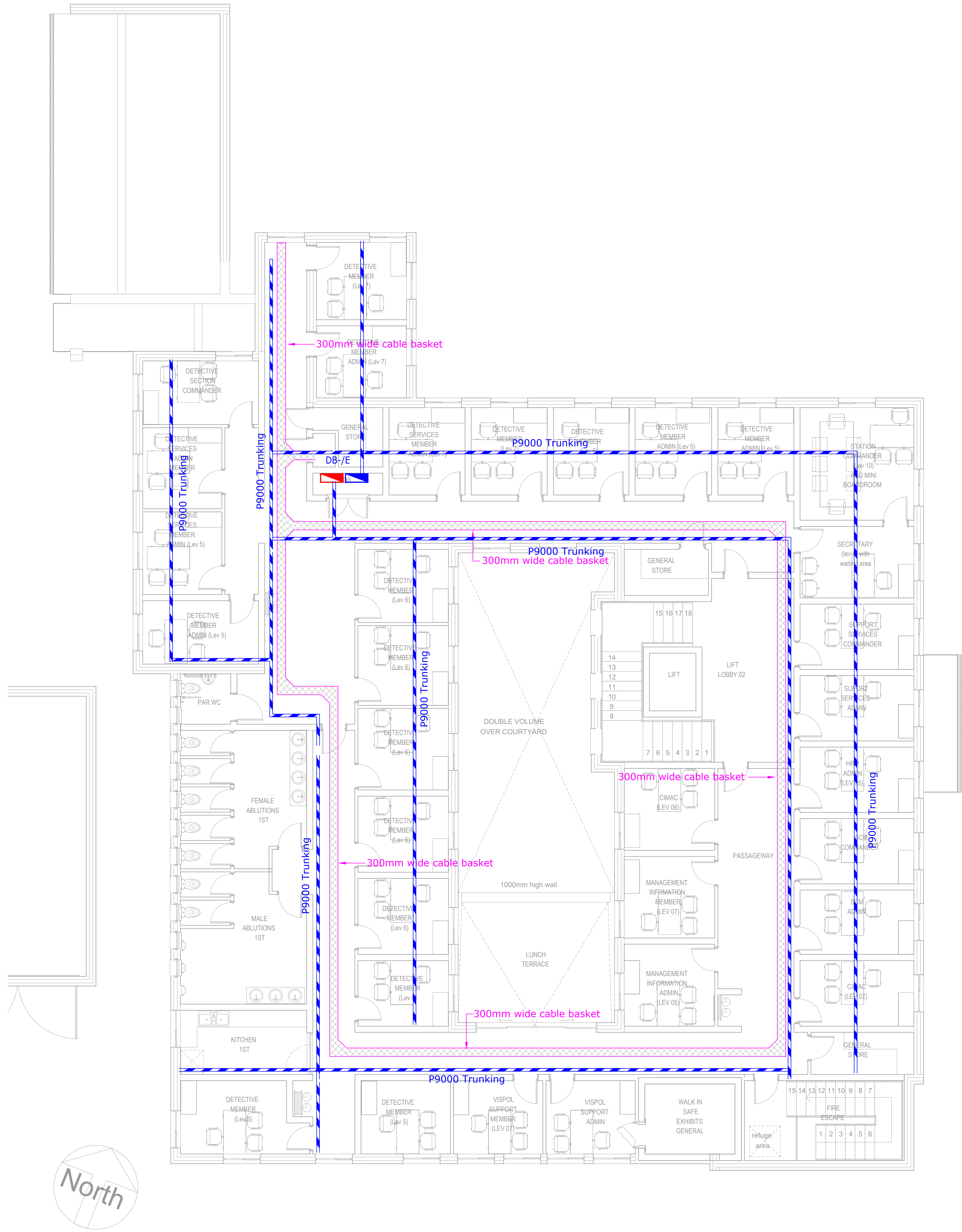
Do not scale this drawing.

All work to comply with relevant Standards, Codes of Practice, Specification and Regulations.

Notwithstanding anything to the contrary, all rights reserved.

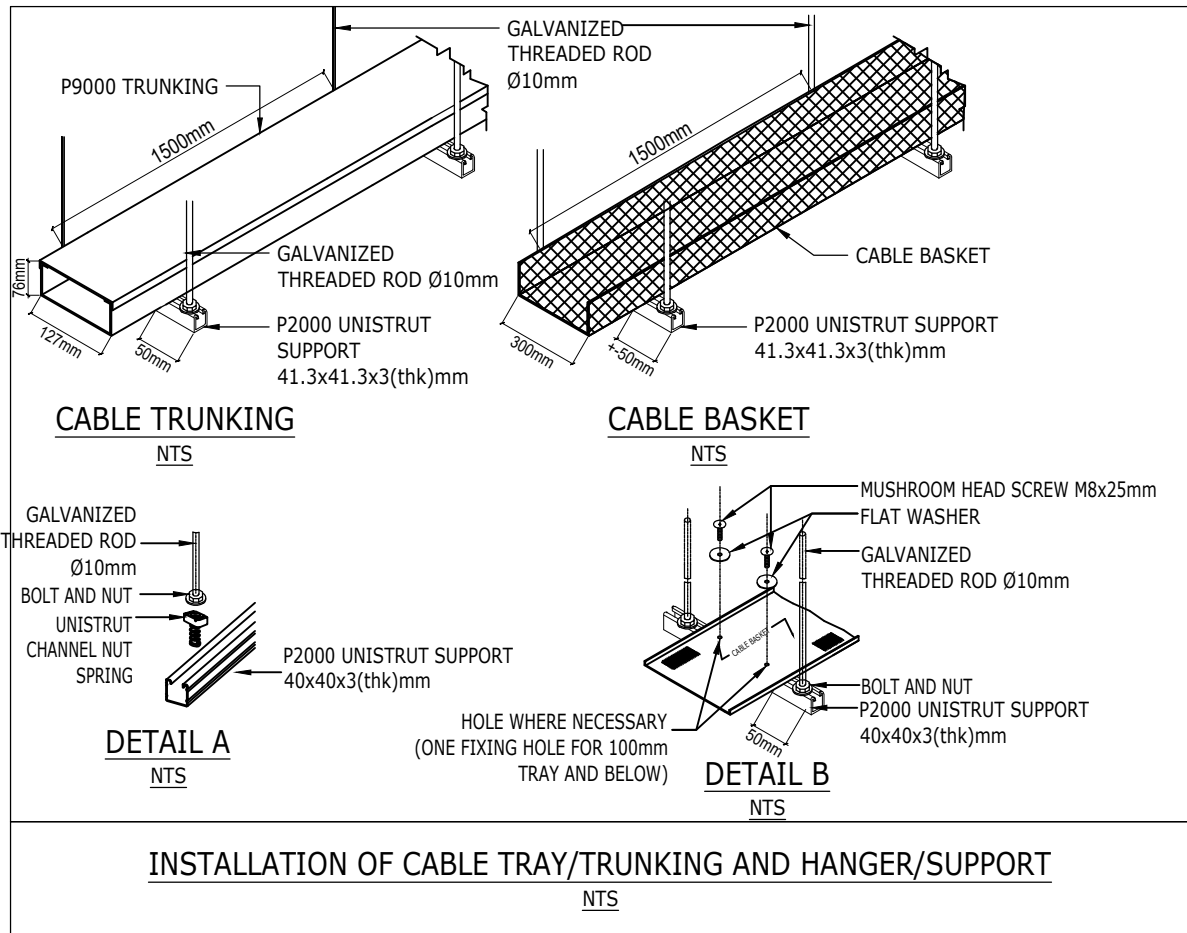
No part of this drawing may be reproduced in any material form (including photo-copying or storage in any medium or by electronic means and whether or not transiently or incidentally to some other use of this drawing). In addition, this drawing may not be used for any purpose or reason other than for which it was originally issued, without written permission of the author.

DRAWING NOTES



- P9000 TRUNKING FOR LIGHTING.
- P9000 TRUNKING FOR SMALL POWER (SOCKET OUTLETS ONLY)
- P9000 TRUNKING FOR MECHANICAL.
- 300mm WIDE CABLE BASKET FOR ELECTRONICS.

CEILING VOID CABLE LADDER/BASKET AND P9000 TRUNKING DETAIL



NOTES: (1) - Contractor to ensure max distance between draw boxes 20 metres notwithstanding anything to contrary.

1. 100/030 CONDUIT BOX.	2. 100/030 CONDUIT BOX AT 100/030.	3. 100/030 CONDUIT BOX AT 100/030.	4. 100/030 CONDUIT BOX AT 100/030.	5. 100/030 CONDUIT BOX AT 100/030.	6. 100/030 CONDUIT BOX AT 100/030.
7. 100/030 CONDUIT BOX AT 100/030.	8. 100/030 CONDUIT BOX AT 100/030.	9. 100/030 CONDUIT BOX AT 100/030.	10. 100/030 CONDUIT BOX AT 100/030.	11. 100/030 CONDUIT BOX AT 100/030.	12. 100/030 CONDUIT BOX AT 100/030.
13. 100/030 CONDUIT BOX AT 100/030.	14. 100/030 CONDUIT BOX AT 100/030.	15. 100/030 CONDUIT BOX AT 100/030.	16. 100/030 CONDUIT BOX AT 100/030.	17. 100/030 CONDUIT BOX AT 100/030.	18. 100/030 CONDUIT BOX AT 100/030.
19. 100/030 CONDUIT BOX AT 100/030.	20. 100/030 CONDUIT BOX AT 100/030.	21. 100/030 CONDUIT BOX AT 100/030.	22. 100/030 CONDUIT BOX AT 100/030.	23. 100/030 CONDUIT BOX AT 100/030.	24. 100/030 CONDUIT BOX AT 100/030.
25. 100/030 CONDUIT BOX AT 100/030.	26. 100/030 CONDUIT BOX AT 100/030.	27. 100/030 CONDUIT BOX AT 100/030.	28. 100/030 CONDUIT BOX AT 100/030.	29. 100/030 CONDUIT BOX AT 100/030.	30. 100/030 CONDUIT BOX AT 100/030.

1. 100/030 CONDUIT BOX.	2. 100/030 CONDUIT BOX AT 100/030.	3. 100/030 CONDUIT BOX AT 100/030.	4. 100/030 CONDUIT BOX AT 100/030.	5. 100/030 CONDUIT BOX AT 100/030.	6. 100/030 CONDUIT BOX AT 100/030.
7. 100/030 CONDUIT BOX AT 100/030.	8. 100/030 CONDUIT BOX AT 100/030.	9. 100/030 CONDUIT BOX AT 100/030.	10. 100/030 CONDUIT BOX AT 100/030.	11. 100/030 CONDUIT BOX AT 100/030.	12. 100/030 CONDUIT BOX AT 100/030.
13. 100/030 CONDUIT BOX AT 100/030.	14. 100/030 CONDUIT BOX AT 100/030.	15. 100/030 CONDUIT BOX AT 100/030.	16. 100/030 CONDUIT BOX AT 100/030.	17. 100/030 CONDUIT BOX AT 100/030.	18. 100/030 CONDUIT BOX AT 100/030.
19. 100/030 CONDUIT BOX AT 100/030.	20. 100/030 CONDUIT BOX AT 100/030.	21. 100/030 CONDUIT BOX AT 100/030.	22. 100/030 CONDUIT BOX AT 100/030.	23. 100/030 CONDUIT BOX AT 100/030.	24. 100/030 CONDUIT BOX AT 100/030.
25. 100/030 CONDUIT BOX AT 100/030.	26. 100/030 CONDUIT BOX AT 100/030.	27. 100/030 CONDUIT BOX AT 100/030.	28. 100/030 CONDUIT BOX AT 100/030.	29. 100/030 CONDUIT BOX AT 100/030.	30. 100/030 CONDUIT BOX AT 100/030.

(2) - Draw boxes required after every second 90 deg. bend or 180 deg. total of slow bends.

1. 100/030 CONDUIT BOX.	2. 100/030 CONDUIT BOX AT 100/030.	3. 100/030 CONDUIT BOX AT 100/030.	4. 100/030 CONDUIT BOX AT 100/030.	5. 100/030 CONDUIT BOX AT 100/030.	6. 100/030 CONDUIT BOX AT 100/030.
7. 100/030 CONDUIT BOX AT 100/030.	8. 100/030 CONDUIT BOX AT 100/030.	9. 100/030 CONDUIT BOX AT 100/030.	10. 100/030 CONDUIT BOX AT 100/030.	11. 100/030 CONDUIT BOX AT 100/030.	12. 100/030 CONDUIT BOX AT 100/030.
13. 100/030 CONDUIT BOX AT 100/030.	14. 100/030 CONDUIT BOX AT 100/030.	15. 100/030 CONDUIT BOX AT 100/030.	16. 100/030 CONDUIT BOX AT 100/030.	17. 100/030 CONDUIT BOX AT 100/030.	18. 100/030 CONDUIT BOX AT 100/030.
19. 100/030 CONDUIT BOX AT 100/030.	20. 100/030 CONDUIT BOX AT 100/030.	21. 100/030 CONDUIT BOX AT 100/030.	22. 100/030 CONDUIT BOX AT 100/030.	23. 100/030 CONDUIT BOX AT 100/030.	24. 100/030 CONDUIT BOX AT 100/030.
25. 100/030 CONDUIT BOX AT 100/030.	26. 100/030 CONDUIT BOX AT 100/030.	27. 100/030 CONDUIT BOX AT 100/030.	28. 100/030 CONDUIT BOX AT 100/030.	29. 100/030 CONDUIT BOX AT 100/030.	30. 100/030 CONDUIT BOX AT 100/030.

(3) - All un-wired conduits to be provided with draw wires. These will be withdrawn and checked at random.

1. 100/030 CONDUIT BOX.	2. 100/030 CONDUIT BOX AT 100/030.	3. 100/030 CONDUIT BOX AT 100/030.	4. 100/030 CONDUIT BOX AT 100/030.	5. 100/030 CONDUIT BOX AT 100/030.	6. 100/030 CONDUIT BOX AT 100/030.
7. 100/030 CONDUIT BOX AT 100/030.	8. 100/030 CONDUIT BOX AT 100/030.	9. 100/030 CONDUIT BOX AT 100/030.	10. 100/030 CONDUIT BOX AT 100/030.	11. 100/030 CONDUIT BOX AT 100/030.	12. 100/030 CONDUIT BOX AT 100/030.
13. 100/030 CONDUIT BOX AT 100/030.	14. 100/030 CONDUIT BOX AT 100/030.	15. 100/030 CONDUIT BOX AT 100/030.	16. 100/030 CONDUIT BOX AT 100/030.	17. 100/030 CONDUIT BOX AT 100/030.	18. 100/030 CONDUIT BOX AT 100/030.
19. 100/030 CONDUIT BOX AT 100/030.	20. 100/030 CONDUIT BOX AT 100/030.	21. 100/030 CONDUIT BOX AT 100/030.	22. 100/030 CONDUIT BOX AT 100/030.	23. 100/030 CONDUIT BOX AT 100/030.	24. 100/030 CONDUIT BOX AT 100/030.
25. 100/030 CONDUIT BOX AT 100/030.	26. 100/030 CONDUIT BOX AT 100/030.	27. 100/030 CONDUIT BOX AT 100/030.	28. 100/030 CONDUIT BOX AT 100/030.	29. 100/030 CONDUIT BOX AT 100/030.	30. 100/030 CONDUIT BOX AT 100/030.

(4) - Cast in conduits to be spaced 35mm, minimum.

1. 100/030 CONDUIT BOX.	2. 100/030 CONDUIT BOX AT 100/030.	3. 100/030 CONDUIT BOX AT 100/030.	4. 100/030 CONDUIT BOX AT 100/030.	5. 100/030 CONDUIT BOX AT 100/030.	6. 100/030 CONDUIT BOX AT 100/030.
7. 100/030 CONDUIT BOX AT 100/030.	8. 100/030 CONDUIT BOX AT 100/030.	9. 100/030 CONDUIT BOX AT 100/030.	10. 100/030 CONDUIT BOX AT 100/030.	11. 100/030 CONDUIT BOX AT 100/030.	12. 100/030 CONDUIT BOX AT 100/030.
13. 100/030 CONDUIT BOX AT 100/030.	14. 100/030 CONDUIT BOX AT 100/030.	15. 100/030 CONDUIT BOX AT 100/030.	16. 100/030 CONDUIT BOX AT 100/030.	17. 100/030 CONDUIT BOX AT 100/030.	18. 100/030 CONDUIT BOX AT 100/030.
19. 100/030 CONDUIT BOX AT 100/030.	20. 100/030 CONDUIT BOX AT 100/030.	21. 100/030 CONDUIT BOX AT 100/030.	22. 100/030 CONDUIT BOX AT 100/030.	23. 100/030 CONDUIT BOX AT 100/030.	24. 100/030 CONDUIT BOX AT 100/030.
25. 100/030 CONDUIT BOX AT 100/030.	26. 100/030 CONDUIT BOX AT 100/030.	27. 100/030 CONDUIT BOX AT 100/030.	28. 100/030 CONDUIT BOX AT 100/030.	29. 100/030 CONDUIT BOX AT 100/030.	30. 100/030 CONDUIT BOX AT 100/030.

(5) - Cable number - refer cable schedule for details.

1. 100/030 CONDUIT BOX.	2. 100/030 CONDUIT BOX AT 100/030.	3. 100/030 CONDUIT BOX AT 100/030.	4. 100/030 CONDUIT BOX AT 100/030.	5. 100/030 CONDUIT BOX AT 100/030.	6. 100/030 CONDUIT BOX AT 100/030.
7. 100/030 CONDUIT BOX AT 100/030.	8. 100/030 CONDUIT BOX AT 100/030.	9. 100/030 CONDUIT BOX AT 100/030.	10. 100/030 CONDUIT BOX AT 100/030.	11. 100/030 CONDUIT BOX AT 100/030.	12. 100/030 CONDUIT BOX AT 100/030.
13. 100/030 CONDUIT BOX AT 100/030.	14. 100/030 CONDUIT BOX AT 100/030.	15. 100/030 CONDUIT BOX AT 100/030.	16. 100/030 CONDUIT BOX AT 100/030.	17. 100/030 CONDUIT BOX AT 100/030.	18. 100/030 CONDUIT BOX AT 100/030.
19. 100/030 CONDUIT BOX AT 100/030.	20. 100/030 CONDUIT BOX AT 100/030.	21. 100/030 CONDUIT BOX AT 100/030.	22. 100/030 CONDUIT BOX AT 100/030.	23. 100/030 CONDUIT BOX AT 100/030.	24. 100/030 CONDUIT BOX AT 100/030.
25. 100/030 CONDUIT BOX AT 100/030.	26. 100/030 CONDUIT BOX AT 100/030.	27. 100/030 CONDUIT BOX AT 100/030.	28. 100/030 CONDUIT BOX AT 100/030.	29. 100/030 CONDUIT BOX AT 100/030.	30. 100/030 CONDUIT BOX AT 100/030.

(6) - Cable number - refer cable schedule for details.

1. 100/030 CONDUIT BOX.	2. 100/030 CONDUIT BOX AT 100/030.	3. 100/030 CONDUIT BOX AT 100/030.	4. 100/030 CONDUIT BOX AT 100/030.	5. 100/030 CONDUIT BOX AT 100/030.	6. 100/030 CONDUIT BOX AT 100/030.
7. 100/030 CONDUIT BOX AT 100/030.	8. 100/030 CONDUIT BOX AT 100/030.	9. 100/030 CONDUIT BOX AT 100/030.	10. 100/030 CONDUIT BOX AT 100/030.	11. 100/030 CONDUIT BOX AT 100/030.	12. 100/030 CONDUIT BOX AT 100/030.
13. 100/030 CONDUIT BOX AT 100/030.	14. 100/030 CONDUIT BOX AT 100/030.	15. 100/030 CONDUIT BOX AT 100/030.	16. 100/030 CONDUIT BOX AT 100/030.	17. 100/030 CONDUIT BOX AT 100/030.	18. 100/030 CONDUIT BOX AT 100/030.
19. 100/030 CONDUIT BOX AT 100/030.	20. 100/030 CONDUIT BOX AT 100/030.	21. 100/030 CONDUIT BOX AT 100/030.	22. 100/030 CONDUIT BOX AT 100/030.	23. 100/030 CONDUIT BOX AT 100/030.	24. 100/030 CONDUIT BOX AT 100/030.
25. 100/030 CONDUIT BOX AT 100/030.	26. 100/030 CONDUIT BOX AT 100/030.	27. 100/030 CONDUIT BOX AT 100/030.	28. 100/030 CONDUIT BOX AT 100/030.	29. 100/030 CONDUIT BOX AT 100/030.	30. 100/030 CONDUIT BOX AT 100/030.

(7) - Cable number - refer cable schedule for details.

1. 100/030 CONDUIT BOX.	2. 100/030 CONDUIT BOX AT 100/030.	3. 100/030 CONDUIT BOX AT 100/030.	4. 100/030 CONDUIT BOX AT 100/030.	5. 100/030 CONDUIT BOX AT 100/030.	6. 100/030 CONDUIT BOX AT 100/030.
7. 100/030 CONDUIT BOX AT 100/030.	8. 100/030 CONDUIT BOX AT 100/030.	9. 100/030 CONDUIT BOX AT 100/030.	10. 100/030 CONDUIT BOX AT 100/030.	11. 100/030 CONDUIT BOX AT 100/030.	12. 100/030 CONDUIT BOX AT 100/030.
13. 100/030 CONDUIT BOX AT 100/030.	14. 100/030 CONDUIT BOX AT 100/030.	15. 100/030 CONDUIT BOX AT 100/030.	16. 100/030 CONDUIT BOX AT 100/030.	17. 100/030 CONDUIT BOX AT 100/030.	18. 100/030 CONDUIT BOX AT 100/030.
19. 100/030 CONDUIT BOX AT 100/030.	20. 100/030 CONDUIT BOX AT 100/030.	21. 100/030 CONDUIT BOX AT 100/030.	22. 100/030 CONDUIT BOX AT 100/030.	23. 100/030 CONDUIT BOX AT 100/030.	24. 100/030 CONDUIT BOX AT 100/030.
25. 100/030 CONDUIT BOX AT 100/030.	26. 100/030 CONDUIT BOX AT 100/030.	27. 100/030 CONDUIT BOX AT 100/030.	28. 100/030 CONDUIT BOX AT 100/030.	29. 100/030 CONDUIT BOX AT 100/030.	30. 100/030 CONDUIT BOX AT 100/030.

(8) - Cable number - refer cable schedule for details.

1. 100/030 CONDUIT BOX.	2. 100/030 CONDUIT BOX AT 100/030.	3. 100/030 CONDUIT BOX AT 100/030.	4. 100/030 CONDUIT BOX AT 100/030.	5. 100/030 CONDUIT BOX AT 100/030.	6. 100/030 CONDUIT BOX AT 100/030.
7. 100/030 CONDUIT BOX AT 100/030.	8. 100/030 CONDUIT BOX AT 100/030.	9. 100/030 CONDUIT BOX AT 100/030.	10. 100/030 CONDUIT BOX AT 100/030.	11. 100/030 CONDUIT BOX AT 100/030.	12. 100/030 CONDUIT BOX AT 100/030.
13. 100/030 CONDUIT BOX AT 100/030.	14. 100/030 CONDUIT BOX AT 100/030.	15. 100/030 CONDUIT BOX AT 100/030.	16. 100/030 CONDUIT BOX AT 100/030.	17. 100/030 CONDUIT BOX AT 100/030.	18. 100/030 CONDUIT BOX AT 100/030.
19. 100/030 CONDUIT BOX AT 100/030.	20. 100/030 CONDUIT BOX AT 100/030.	21. 100/030 CONDUIT BOX AT 100/030.	22. 100/030 CONDUIT BOX AT 100/030.	23. 100/030 CONDUIT BOX AT 100/030.	24. 100/030 CONDUIT BOX AT 100/030.
25. 100/030 CONDUIT BOX AT 100/030.	26. 100/030 CONDUIT BOX AT 100/030.	27. 100/030 CONDUIT BOX AT 100/030.	28. 100/030 CONDUIT BOX AT 100/030.	29. 100/030 CONDUIT BOX AT 100/030.	30. 100/030 CONDUIT BOX AT 100/030.

(9) - Cable number - refer cable schedule for details.

1. 100/030 CONDUIT BOX.	2. 100/030 CONDUIT BOX AT 100/030.	3. 100/030 CONDUIT BOX AT 100/030.	4. 100/030 CONDUIT BOX AT 100/030.	5. 100/030 CONDUIT BOX AT 100/030.	6. 100/030 CONDUIT BOX AT 100/030.
7. 100/030 CONDUIT BOX AT 100/030.	8. 100/030 CONDUIT BOX AT 100/030.	9. 100/030 CONDUIT BOX AT 100/030.	10. 100/030 CONDUIT BOX AT 100/030.	11. 100/030 CONDUIT BOX AT 100/030.	12. 100/030 CONDUIT BOX AT 100/030.
13. 100/030 CONDUIT BOX AT 100/030.	14. 100/030 CONDUIT BOX AT 100/030.	15. 100/030 CONDUIT BOX AT 100/030.	16. 100/030 CONDUIT BOX AT 100/030.	17. 100/030 CONDUIT BOX AT 100/030.	18. 100/030 CONDUIT BOX AT 100/030.
19. 100/030 CONDUIT BOX AT 100/030.	20. 100/030 CONDUIT BOX AT 100/030.	21. 100/030 CONDUIT BOX AT 100/030.	22. 100/030 CONDUIT BOX AT 100/030.	23. 100/030 CONDUIT BOX AT 100/030.	24. 100/030 CONDUIT BOX AT 100/030.
25. 100/030 CONDUIT BOX AT 100/030.	26. 100/030 CONDUIT BOX AT 100/030.	27. 100/030 CONDUIT BOX AT 100/030.	28. 100/030 CONDUIT BOX AT 100/030.	29. 100/030 CONDUIT BOX AT 100/030.	30. 100/030 CONDUIT BOX AT 100/030.

Approved in Principle
Justin McKelvie-King
Pr Eng : 20120548



PROJECT/WORKSHEET
Samora Machel Police Station
Electrical Installation

TITLE
First Floor
Ceiling Power Layout

ENGINEER:	32308	211	1	A
PROJECT NO:	32308	211	1	A
DRAWING NO:	32308	211	1	A
SHEET:	32308	211	1	A
LAYERS:	32308	211	1	A