

18 Y16- 2 -150 (T1)
18 Y10- 3 -150 (B1)

4 Y16- 6 -(2T&B)

14 Y16- 4 -150 (T2)
14 Y10- 12 -150 (B2)



4 Y16- 5 -(2T&B)



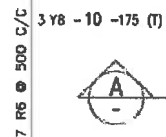
4 Y16- 5 -(2T&B)

4 Y16- 6 -(2T&B)

FOUNDATION
REINFORCEMENT LAYOUT
SCALE 1:25

14 Y12- 7 -250 (B1)

3 Y8 - 9 -175 (T)



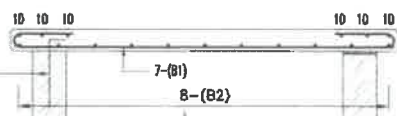
3 Y8 - 10 -175 (T)

12 Y8 - 8 -250 (B2)

3 Y8 - 10 -175 (T)

3 Y8 - 9 -175 (T)

ROOF SLAB
REINFORCEMENT LAYOUT
SCALE 1:25



7 R6 - 11 -500 (MIDDLE)
(HOLDING DOWN BARS PLACED
6 BRICK COURSES DEEP)

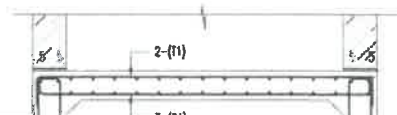
7-(B1)

8-(B2)



13-(B1)

14-(B2)



2-(T1)

3-(B1)

4-(T2) & 12-(B2)

33 R6 - 1 -300 (TOTAL LINKS)

SECTION A-A
SCALE 1:25

9 Y8 - 13 -250 (B1)

3 Y8 - 15 -175 (T)



3 Y8 - 16 -175 (T)



3 Y8 - 16 -175 (T)

9 Y8 - 14 -250 (B2)

3 Y8 - 15 -175 (T)

LOWER SLAB
REINFORCEMENT LAYOUT
SCALE 1:25

MEMBER	MARK	DIA	No OF	BARS PER MEMB	TOTAL NUM-BER	LENGTH	S C	B E N D I N G				
								A	B	C	D	E/r
HEAT PUMP ROOM	1	R08	1	33	33	1450	60	150	510			
	2	Y16	1	18	18	2450	35	2260				
	3	Y10	1	18	18	2550	35	2260				
	4	Y16	1	14	14	3150	35	2900				
	5	Y16	1	8	8	3150	35	2900				
	6	Y16	1	8	8	2500	35	2260				
	7	Y12	1	14	14	3450	36	400	90	2580	90	
	8	Y08	1	12	12	4050	36	400	60	3220	60	
	9	Y08	1	6	6	2800	35	2580				
	10	Y08	1	6	6	3450	35	3220				
	11	R06	1	7	7	750	37	600				
	12	Y10	1	14	14	3100	35	2900				
	13	Y8	1	9	9	2950	36	400	90	2050	90	
	14	Y8	1	9	9	2950	36	400	60	2050	60	
	15	Y8	1	6	6	2250	35	2050				
	16	Y8	1	6	6	2250	35	2050				
NOTE: QUANTITIES ARE FOR ONE HEAT PUMP ROOM ONLY												
	8	10	12	15	20	25	32	40	TOT	Detailed Checked Date	KF	
R kg	22	0	0	0	0	0	0	0	22	05-11-2015	SJK	
Y kg	66	54	43	211	0	0	0	0	373	Project No	E404	
										Ref. Des. No	E404-R-407	
DARK & SILVER CITY HOUSING BOT SITE - HEAT PUMP ROOM TYPICAL REINFORCEMENT DETAILS										Revision	0	
										Schedule No	E404-RS-407	


GENERAL NOTES:

- THIS DRAWING TO BE READ IN CONJUNCTION WITH ALL RELEVANT ARCHITECT'S DRAWINGS, ENGINEER'S DRAWINGS AND THE PROJECT TECHNICAL SPECIFICATION FOR STRUCTURAL CONCRETE.
- DIMENSIONS MUST NOT BE SCALED OR ASSUMED. AFTER NOTIFICATION, DISCREPANCIES OR MISSING DIMENSIONS WILL BE CORRECTED IN WRITING BY THE ENGINEER.
- CONCRETE STRENGTH AT 28 DAYS: FOUNDATION = 25MPa; ROOF SLAB = 30MPa.
- COVER TO REINFORCEMENT:
FOUNDATION: TOP & SIDES = 40mm; BOT = 50mm
ROOF SLAB: = 30mm

LEGEND.

EF - each face
ALT - alternate
STO - stagger
MF - near face
ABR - alternate bars reversed
PES - in pairs
EW - each way
B1 - 1st lowest layer
T1 - 1st top most layer
T2 - 2nd layer down etc
B2 - 2nd layer up etc
TF - top face
T - top
T&B - top & bottom
B - bottom

Rev.	Revised By	Revised Date	Revised Description	Rev.	Revised By	Revised Date	Revised Description
1	ISSUED FOR CONSTRUCTION	01/01/18		2	REVISED FOR REVISION	01/01/18	
3	REVISED FOR REVISION	01/01/18		4	REVISED FOR REVISION	01/01/18	
5	REVISED FOR REVISION	01/01/18		6	REVISED FOR REVISION	01/01/18	
7	REVISED FOR REVISION	01/01/18		8	REVISED FOR REVISION	01/01/18	
9	REVISED FOR REVISION	01/01/18		10	REVISED FOR REVISION	01/01/18	
11	REVISED FOR REVISION	01/01/18		12	REVISED FOR REVISION	01/01/18	
13	REVISED FOR REVISION	01/01/18		14	REVISED FOR REVISION	01/01/18	
15	REVISED FOR REVISION	01/01/18		16	REVISED FOR REVISION	01/01/18	
17	REVISED FOR REVISION	01/01/18		18	REVISED FOR REVISION	01/01/18	
19	REVISED FOR REVISION	01/01/18		20	REVISED FOR REVISION	01/01/18	
21	REVISED FOR REVISION	01/01/18		22	REVISED FOR REVISION	01/01/18	
23	REVISED FOR REVISION	01/01/18		24	REVISED FOR REVISION	01/01/18	
25	REVISED FOR REVISION	01/01/18		26	REVISED FOR REVISION	01/01/18	
27	REVISED FOR REVISION	01/01/18		28	REVISED FOR REVISION	01/01/18	
29	REVISED FOR REVISION	01/01/18		30	REVISED FOR REVISION	01/01/18	
31	REVISED FOR REVISION	01/01/18		32	REVISED FOR REVISION	01/01/18	
33	REVISED FOR REVISION	01/01/18		34	REVISED FOR REVISION	01/01/18	
35	REVISED FOR REVISION	01/01/18		36	REVISED FOR REVISION	01/01/18	
37	REVISED FOR REVISION	01/01/18		38	REVISED FOR REVISION	01/01/18	
39	REVISED FOR REVISION	01/01/18		40	REVISED FOR REVISION	01/01/18	
41	REVISED FOR REVISION	01/01/18		42	REVISED FOR REVISION	01/01/18	
43	REVISED FOR REVISION	01/01/18		44	REVISED FOR REVISION	01/01/18	
45	REVISED FOR REVISION	01/01/18		46	REVISED FOR REVISION	01/01/18	
47	REVISED FOR REVISION	01/01/18		48	REVISED FOR REVISION	01/01/18	
49	REVISED FOR REVISION	01/01/18		50	REVISED FOR REVISION	01/01/18	
51	REVISED FOR REVISION	01/01/18		52	REVISED FOR REVISION	01/01/18	
53	REVISED FOR REVISION	01/01/18		54	REVISED FOR REVISION	01/01/18	
55	REVISED FOR REVISION	01/01/18		56	REVISED FOR REVISION	01/01/18	
57	REVISED FOR REVISION	01/01/18		58	REVISED FOR REVISION	01/01/18	
59	REVISED FOR REVISION	01/01/18		60	REVISED FOR REVISION	01/01/18	
61	REVISED FOR REVISION	01/01/18		62	REVISED FOR REVISION	01/01/18	
63	REVISED FOR REVISION	01/01/18		64	REVISED FOR REVISION	01/01/18	
65	REVISED FOR REVISION	01/01/18		66	REVISED FOR REVISION	01/01/18	
67	REVISED FOR REVISION	01/01/18		68	REVISED FOR REVISION	01/01/18	
69	REVISED FOR REVISION	01/01/18		70	REVISED FOR REVISION	01/01/18	
71	REVISED FOR REVISION	01/01/18		72	REVISED FOR REVISION	01/01/18	
73	REVISED FOR REVISION	01/01/18		74	REVISED FOR REVISION	01/01/18	
75	REVISED FOR REVISION	01/01/18		76	REVISED FOR REVISION	01/01/18	
77	REVISED FOR REVISION	01/01/18		78	REVISED FOR REVISION	01/01/18	
79	REVISED FOR REVISION	01/01/18		80	REVISED FOR REVISION	01/01/18	
81	REVISED FOR REVISION	01/01/18		82	REVISED FOR REVISION	01/01/18	
83	REVISED FOR REVISION	01/01/18		84	REVISED FOR REVISION	01/01/18	
85	REVISED FOR REVISION	01/01/18		86	REVISED FOR REVISION	01/01/18	
87	REVISED FOR REVISION	01/01/18		88	REVISED FOR REVISION	01/01/18	
89	REVISED FOR REVISION	01/01/18		90	REVISED FOR REVISION	01/01/18	
91	REVISED FOR REVISION	01/01/18		92	REVISED FOR REVISION	01/01/18	
93	REVISED FOR REVISION	01/01/18		94	REVISED FOR REVISION	01/01/18	
95	REVISED FOR REVISION	01/01/18		96	REVISED FOR REVISION	01/01/18	
97	REVISED FOR REVISION	01/01/18		98	REVISED FOR REVISION	01/01/18	
99	REVISED FOR REVISION	01/01/18		100	REVISED FOR REVISION	01/01/18	

CLIENT				APPROVED BY: K. Muzamir PROF. ENGINEER 201370222 DATE: 25/06/2018		APPROVED BY: K. MUZAMIR ENGINEER CHECKED BY: S. MUDLOU DRAWN BY: S.W.K. Scale of Sheet: _____ Name: _____ Signature: _____ Date: 30-06-2018 30-06-2018 30-06-2018	
FREE STATE PROVINCIAL GOVERNMENT DEPARTMENT OF HUMAN SETTLEMENT				Project Name: DARK & SILVER CITY HOUSING DEVELOPMENT (BOTTOM SITE)		Project Number: E404	
Physical Address		Postal Address		Physical Address		Postal Address	
LTD HOUSE BUILDING 57 JORDAN STREET BLOEMFONTEIN		PO BOX 221 BLOEMFONTEIN 9001		LTE House Building 1 Office Park (Bolveters Place) 5 Egin Road, Sunning Hill 2157 Tel: +27 (0) 11 061 5700 2157		Postal Box No. 326 Private Bag X25 Sunninghill 2157	
DRAWING TITLE: HEAT PUMP ROOM TYPICAL REINFORCEMENT DETAILS				DRAWING NO: E404-R-407		Rev: 4	