



REPAIR OF MASEMOLA-MOLOTO STREET (PAVEMENT) (WARD 2)

LIST OF DRAWINGS

NO.	TITLE	DRG NO.	NO.	DRG NO.
1	BOOK OF DRAWINGS : COVER, LIST OF DRAWINGS, LOCALITY AND LAYOUT	BK0217-C-RD-01	4	PLAN VIEW LAYOUT: MOLOTO STREET CH+0.00 TO +270.00
2	PLAN VIEW LAYOUT: MASEMOLA STREET: SECTION 1: CH+0.00 TO +85.00	BK0217-C-RD-02	5	PLAN VIEW LAYOUT: MASEMOLA AND SITHOLE STREET INTERSECTION
3	PLAN VIEW LAYOUT: MASEMOLA STREET: SECTION 2: CH+0.00 TO +173.00	BK0217-C-RD-03	6	CONSTRUCTION SIGN BOARD

REVISION :
REV: DATE: COMMENTS: BY:

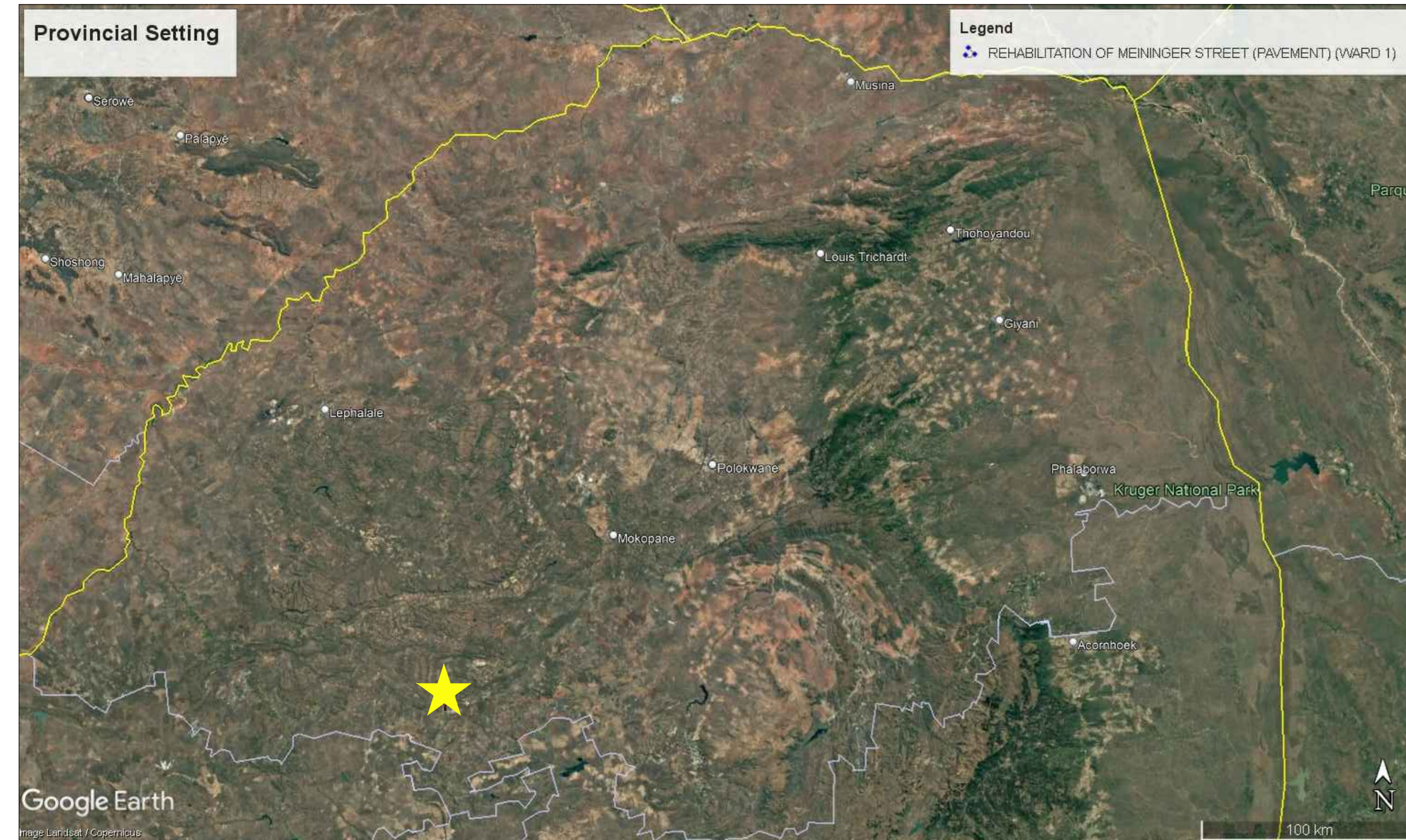
REV:	DATE:	COMMENTS:	BY:

CROSS REF. DRAWINGS:
DISCIPLINE: DRAWING NO. :

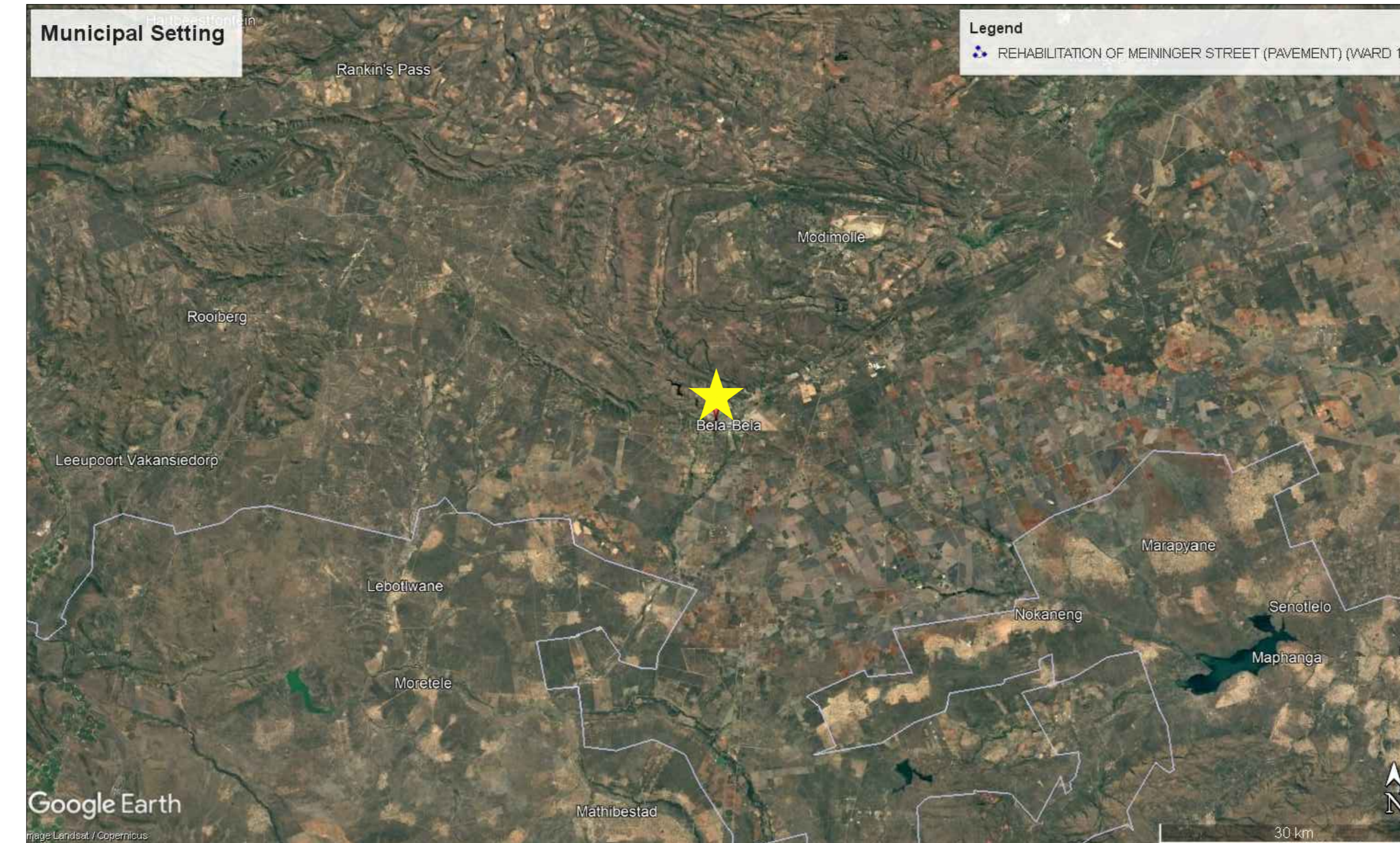
Confidentiality Note:
This drawing contains confidential information intended for a specific addressee and purpose. This information is private and protected by law. If you are not the intended recipient, you are hereby notified that any disclosure or distribution, or the taking of any action based on the contents of this information is strictly prohibited.

Stamp

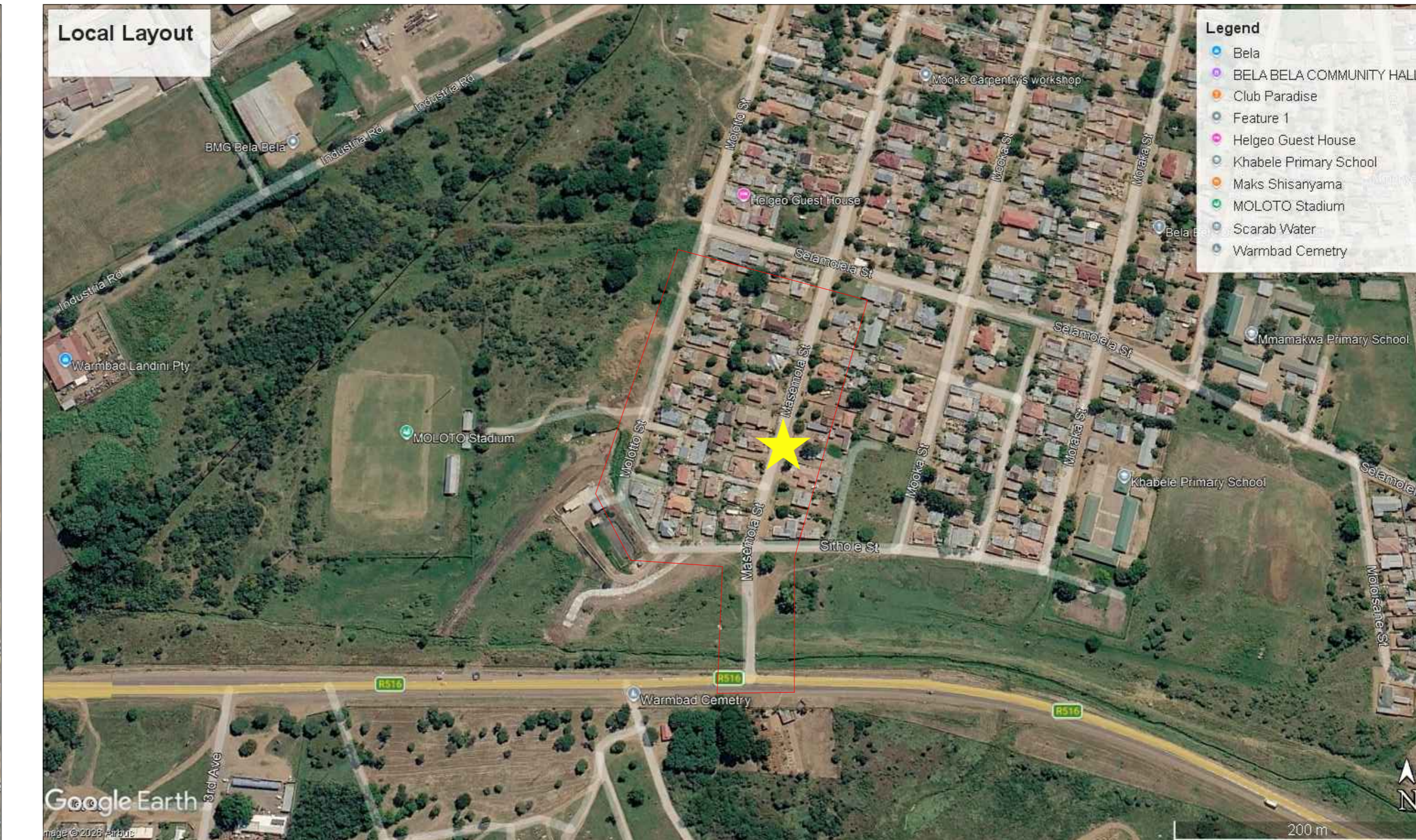
CONSULTING ENGINEER
Approved for distribution :
Prepared by: Vedanth Jugath (Pr Techni Eng. 2019600247) (Design Engineer)
Signature: *[Signature]*
Checked and Reviewed by: Thamisanqa Skele (Pr Tech Eng. 9970127) (Design Lead / Engineer)
Signature: *[Signature]*



PROVINCIAL SETTING
NTS



MUNICIPAL SETTING
NTS



LOCAL LAYOUT
NTS



PLAN VIEW LAYOUT
NTS

NOT FOR CONSTRUCTION / FOR TENDER PURPOSES ONLY

Municipality
BELA-BELA LOCAL MUNICIPALITY

Client
BELA-BELA LOCAL MUNICIPALITY
CHRIS HANI DRIVE
BELA-BELA 0480
Tel: 014 736 8000
Email: mojelam@belabela.gov.za

Consultant
Bakone Consulting Engineers
HEAD OFFICE :
581, Mendelsohn Street
Constatia Park, Pretoria
P.O. Box 72360, Lynnwood Ridge, 0040
Tel: 012 996 1225
Fax: 012 996 1169
Email: bakonepta@bakonegroup.co.za

Discipline
CIVIL ENGINEERING

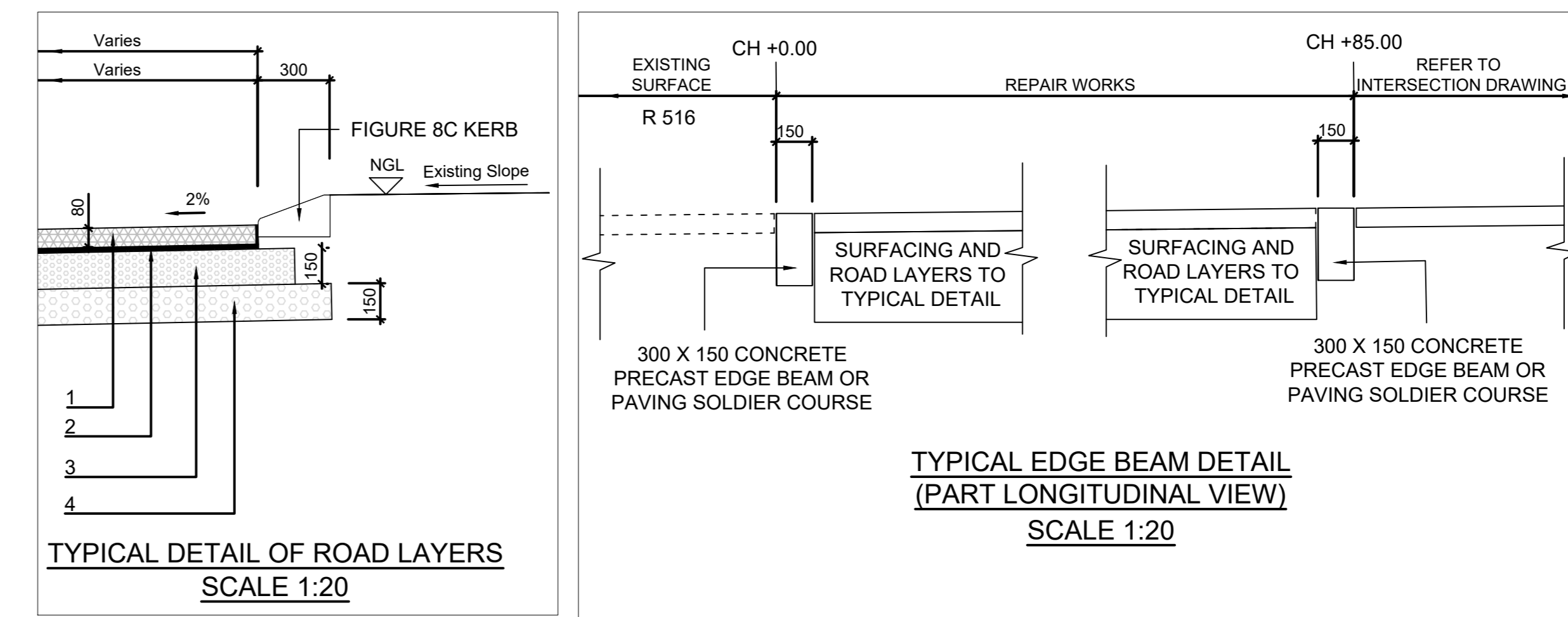
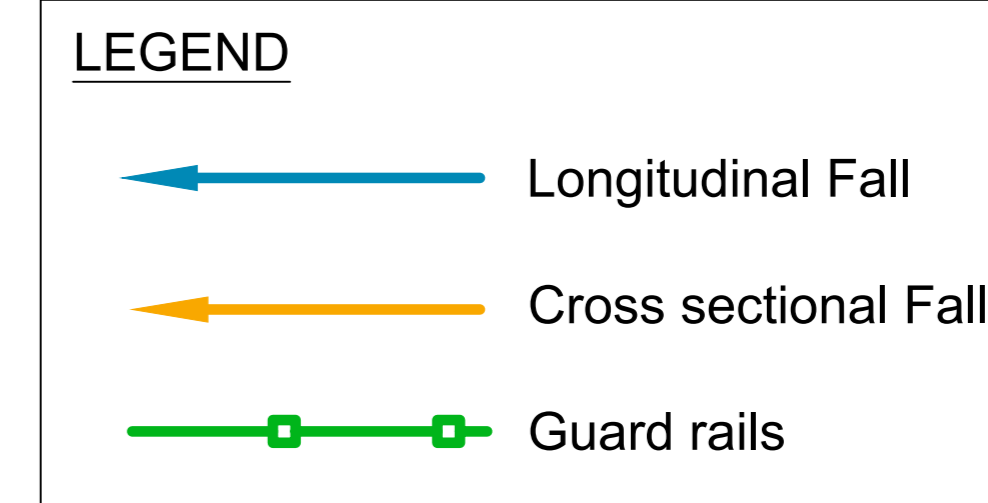
Project Description
REPAIR OF MASEMOLA-MOLOTO STREET (PAVEMENT) (WARD 2)

Client Project no.
9/3/1/436

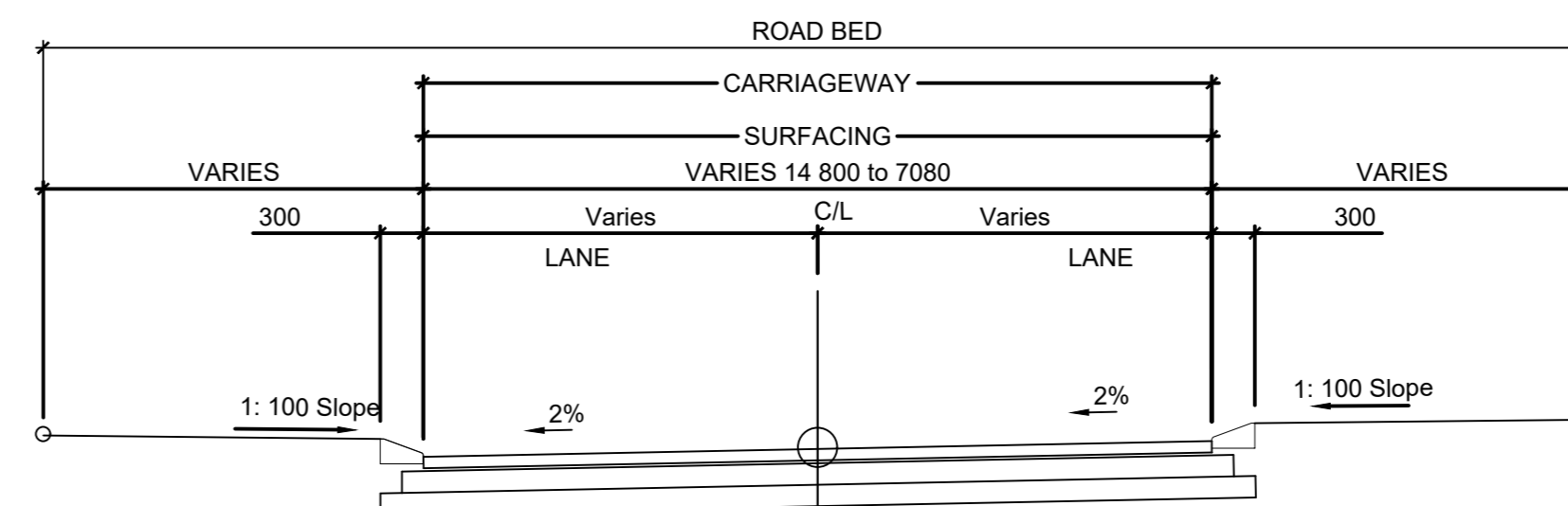
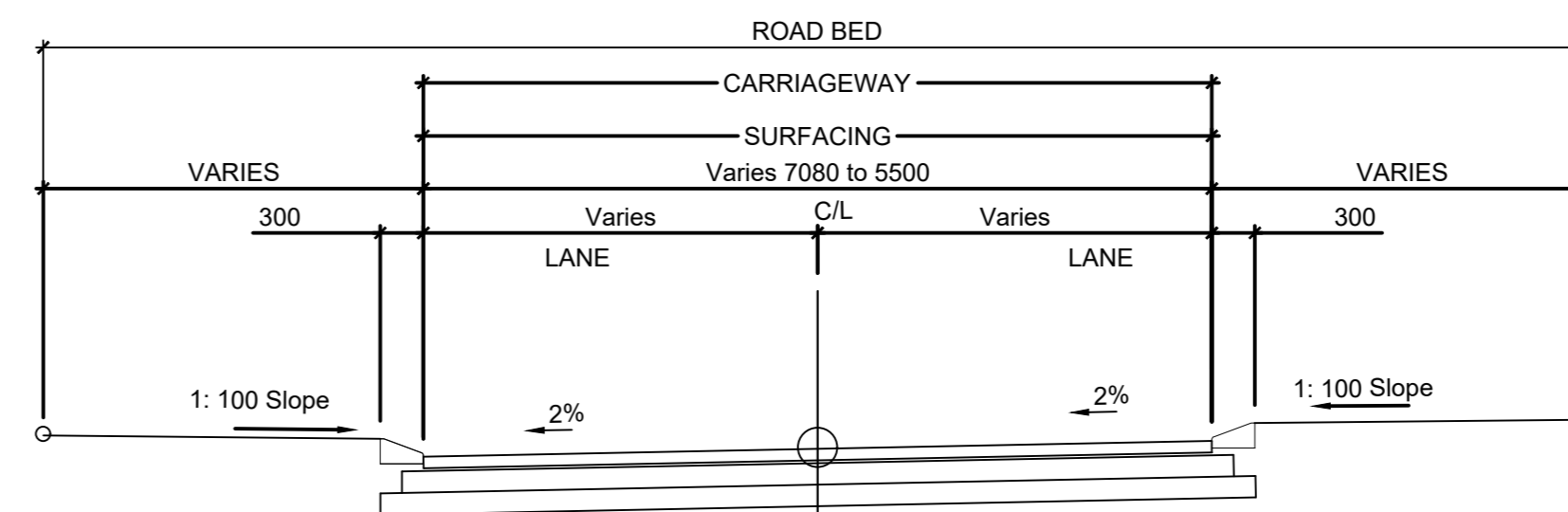
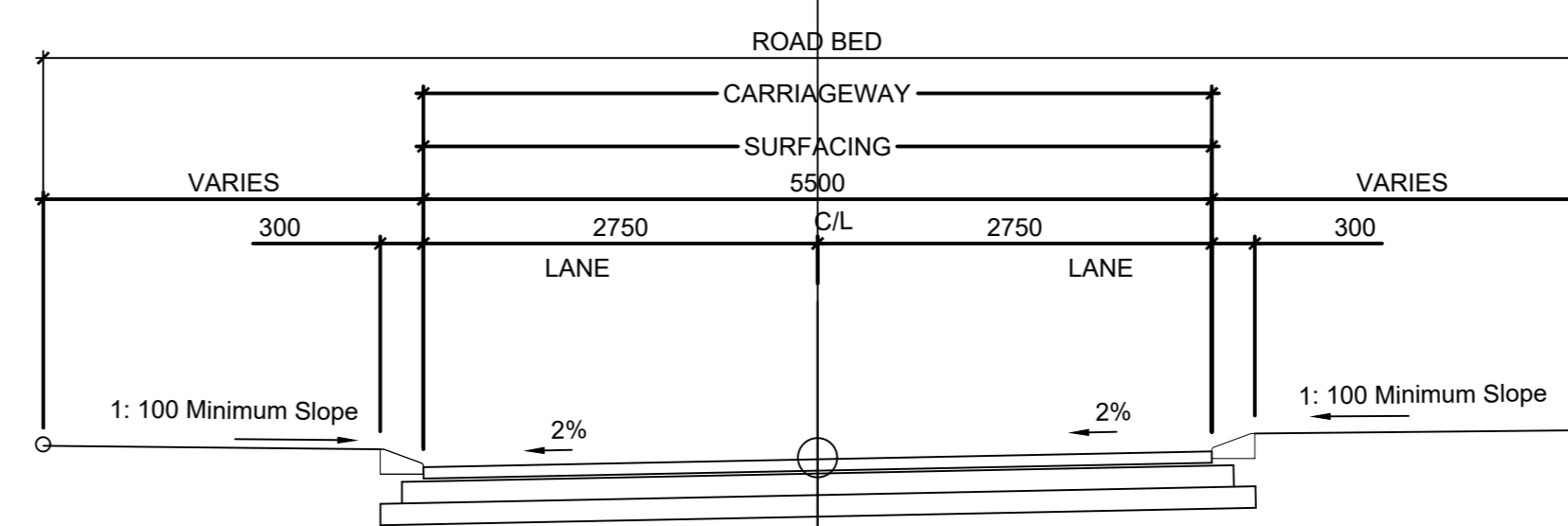
Drawing Title
BOOK OF DRAWINGS : COVER, LIST OF DRAWINGS, LOCALITY AND LAYOUT
Project Stage: STAGE 4
Scale: A0: AS SHOWN
Date: 23 MAY 2026
Drawing number: BK0217-C-RD-01
Designed: V.Y. JUGATH
Drawn: A. BUDHRAM
Checked: R. MATLALA
Checked: T.P. SKELE
Rev: 0



PLAN VIEW LAYOUT
SCALE 1:200



LAYER NO.	Thickness (mm)	Type	MATERIAL CLASS	COMPACTION (% OF MOD. AASHTO)
1	80	SURFACING	CONCRETE INTERLOCKING PAVING BLOCKS	
2	20	BEDDING	SAND BEDDING	97% to 100%
3	150	BASE	G5	94% to 96%
4	150	SUB BASE	G6	92% to 94%



REVISION :

REV:	DATE:	COMMENTS:	BY:
0	23.05.26	FOR TENDER PURPOSES ONLY	AB

CROSS REF. DRAWINGS:

DISCIPLINE:	DRAWING NO. :

Confidentiality Note:
This drawing contains confidential information intended for a specific addressee and purpose. This information is private and protected by law. If you are not the intended recipient, you are hereby notified that any disclosure or distribution, or the taking of any action based on the contents of this information is strictly prohibited.

Stamp

CONSULTING ENGINEER

Approved for distribution :

Prepared by: Vedanth Jugath (Pr Techni Eng. 2019600247) (Design Engineer)

Signature: *[Signature]*

Checked and Reviewed by: Thamisanga Skele (Pr Tech Eng. 9970127) (Design Lead / Engineer)

Signature: *[Signature]*

Municipality

BELA-BELA LOCAL MUNICIPALITY

Client

BELA-BELA LOCAL MUNICIPALITY

CHRIS HANI DRIVE
BELA-BELA 0480
Tel: 014 736 8000
Email: mojdlam@belabela.gov.za

Consultant

Bakone Consulting Engineers

HEAD OFFICE :
581, Mendelsohn Street
Constatia Park, Pretoria
P.O. Box 72360, Lynnwood Ridge, 0040
Tel: 012 998 1225
Fax: 012 998 1169
Email: bakonept@bakonegroup.co.za

Discipline
CIVIL ENGINEERING

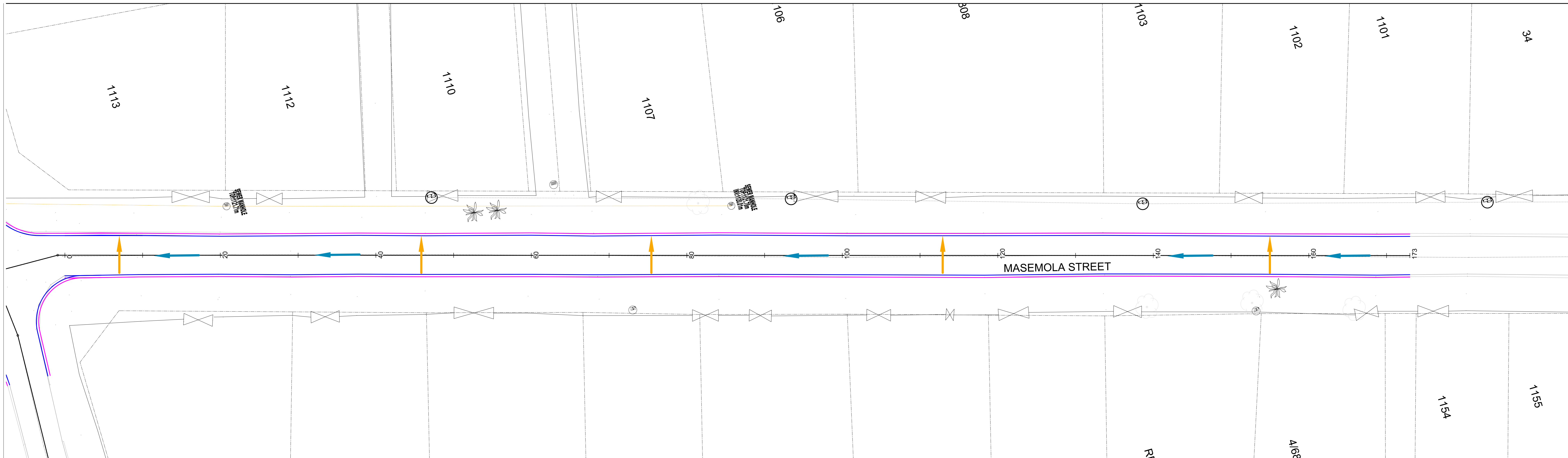
Project Description
REPAIR OF MASEBOLA-MOLOTO STREET (PAVEMENT) (WARD 2)

Client Project no. 9/3/1/436

Drawing Title
PLAN VIEW LAYOUT: MASEBOLA STREET SECTION 1 - CH+0.00 TO +85.00

Project Stage	Designed	Drawn
STAGE 4	V.Y. JUGATH	A. BUDHRAM
A0: AS SHOWN	R. MATLALA	T.P. SKELE
Date	23 MAY 2026	Checked
Drawing number	BK0217-C-RD-02	Rev
		0

NOT FOR CONSTRUCTION/ FOR TENDER PURPOSES ONLY



REVISION :

REV:	DATE:	COMMENTS:	BY:
0	23.05.26	FOR TENDER PURPOSES ONLY	AB

CROSS REF. DRAWINGS:

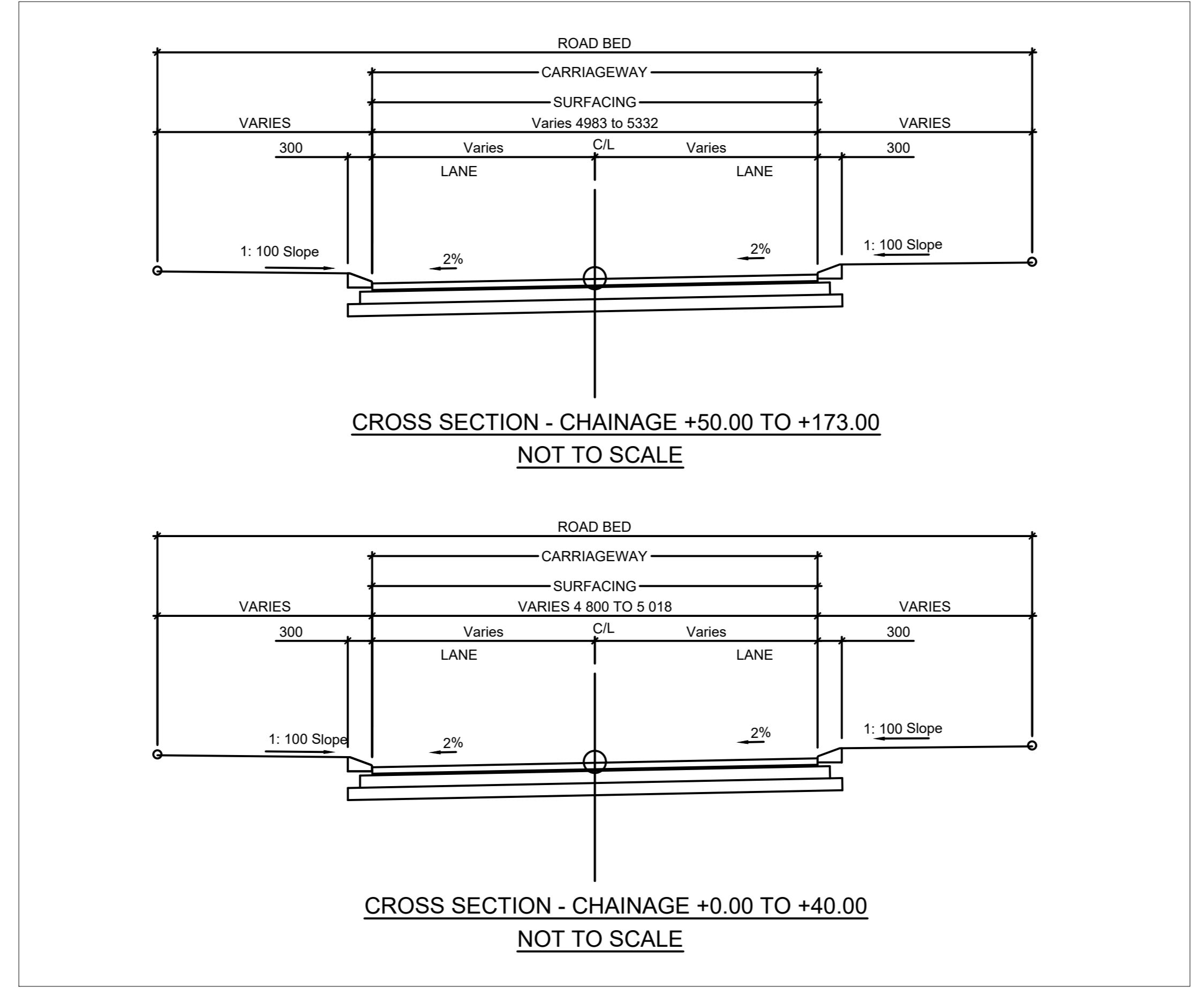
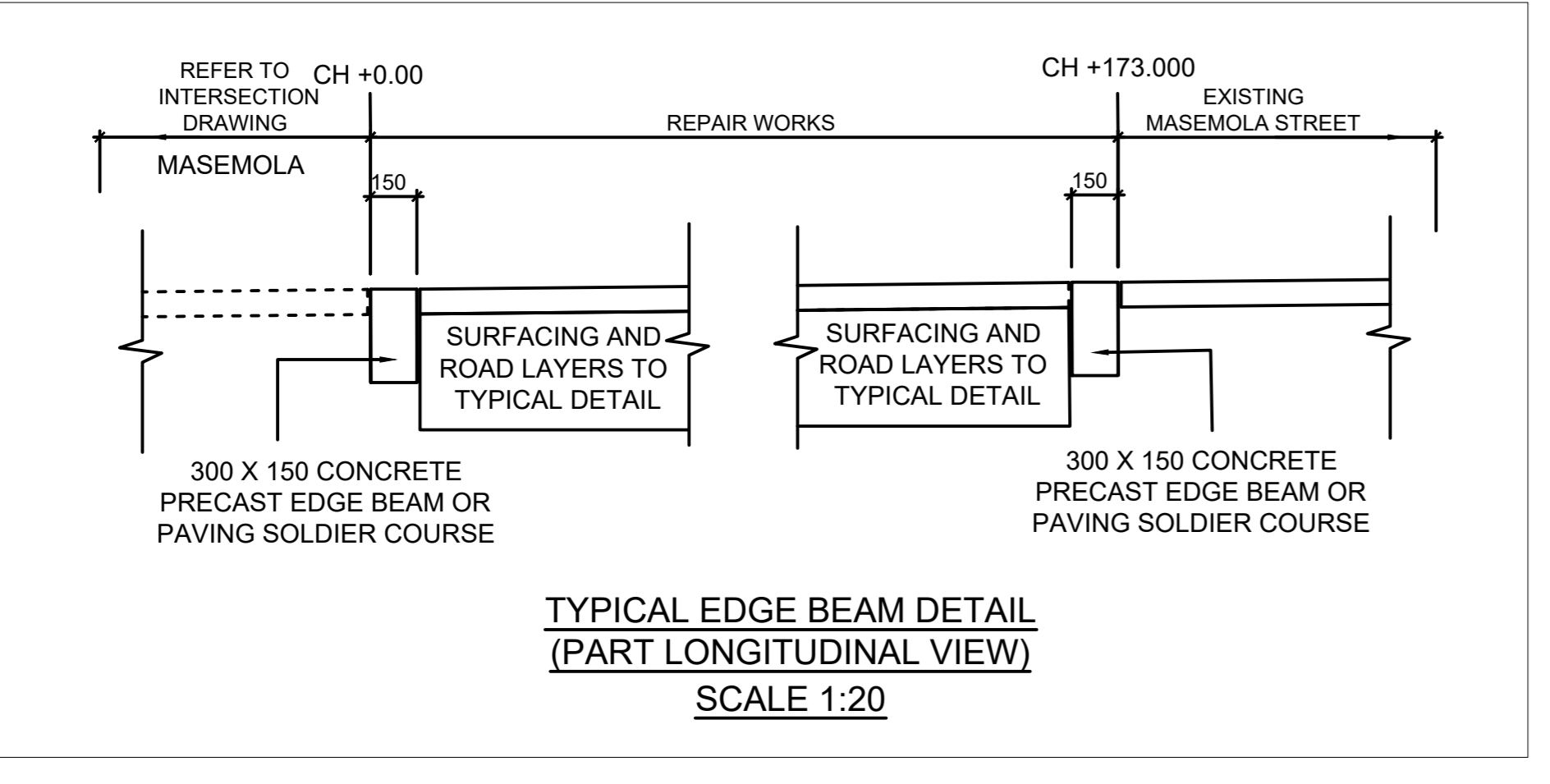
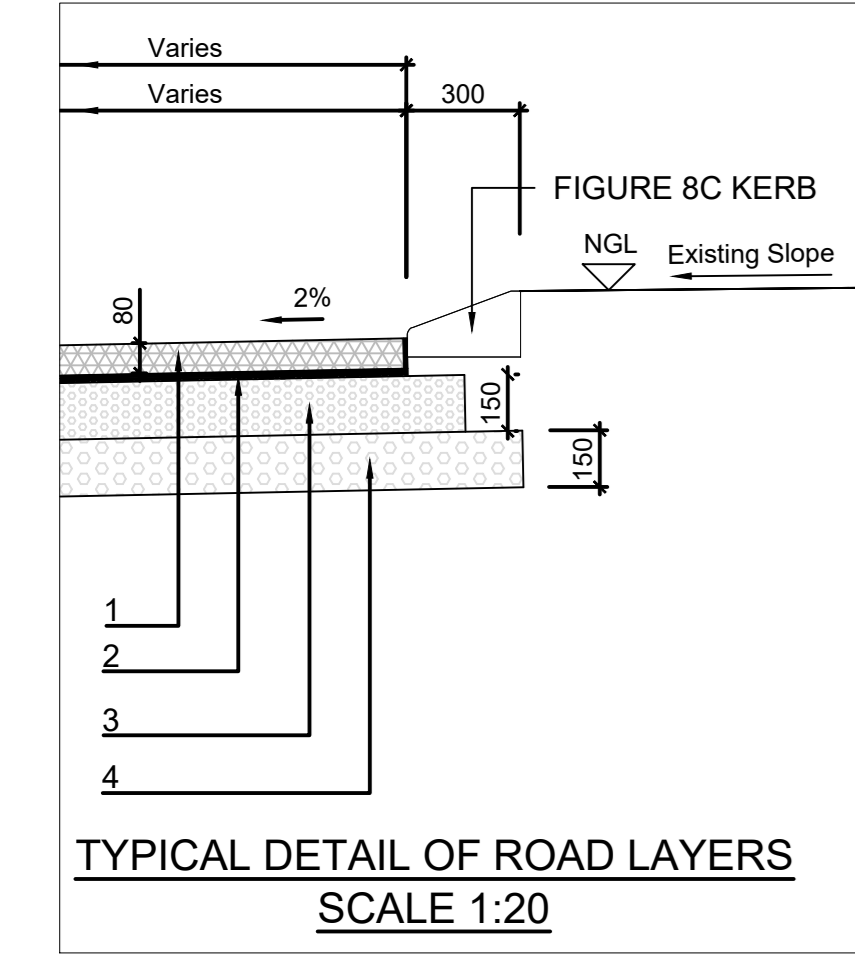
DISCIPLINE:	DRAWING NO. :

Confidentiality Note:
 This drawing contains confidential information intended for a specific addressee and purpose. This information is private and protected by law. If you are not the intended recipient, you are hereby notified that any disclosure or distribution, or the taking of any action based on the contents of this information is strictly prohibited.

**PLAN VIEW LAYOUT
SCALE 1:200**

LEGEND

- Longitudinal Fall
- Cross sectional Fall
- Guard rails



LAYER				
NO.	Thickness (mm)	Type	MATERIAL CLASS	COMPACTION (% OF MOD. AASHTO)
1	80	SURFACING	CONCRETE INTERLOCKING PAVING BLOCKS	
2	20	BEDDING	SAND BEDDING	97% to 100%
3	150	BASE	G5	94% to 96%
4	150	SUB BASE	G6	92% to 94%

Stamp

CONSULTING ENGINEER

Approved for distribution :

Prepared by:	Vedanth Jugath (Pr Techni Eng. 2019600247) (Design Engineer)
Signature:	
Checked and Reviewed by:	Thamisanga Skele (Pr Tech Eng. 9970127) (Design Lead / Engineer)
Signature:	

Municipality

BELA-BELA LOCAL MUNICIPALITY

Client

BELA-BELA LOCAL MUNICIPALITY

CHRIS HANI DRIVE
 BELA-BELA 0480
 Tel: 014 736 8000
 Email: mojelem@belabela.gov.za

Consultant

Bakone Consulting Engineers

HEAD OFFICE :
 581, Mendelsohn Street
 Constantia Park, Pretoria
 P.O. Box 72360, Lynnwood Ridge, 0040
 Tel: 012 998 1225
 Fax: 012 998 1169
 Email: bakonepta@bakonegroup.co.za

Discipline: **CIVIL ENGINEERING**

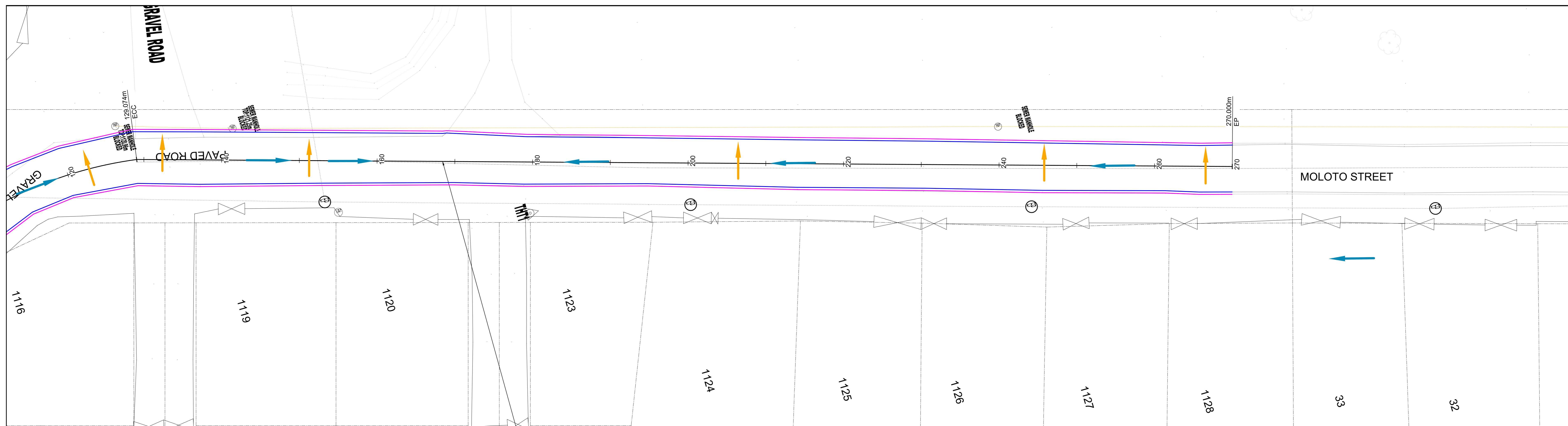
Project Description: **REPAIR OF MASEMOLA-MOLOTO STREET (PAVEMENT) (WARD 2)**

Client Project no. **9/3/1/436**

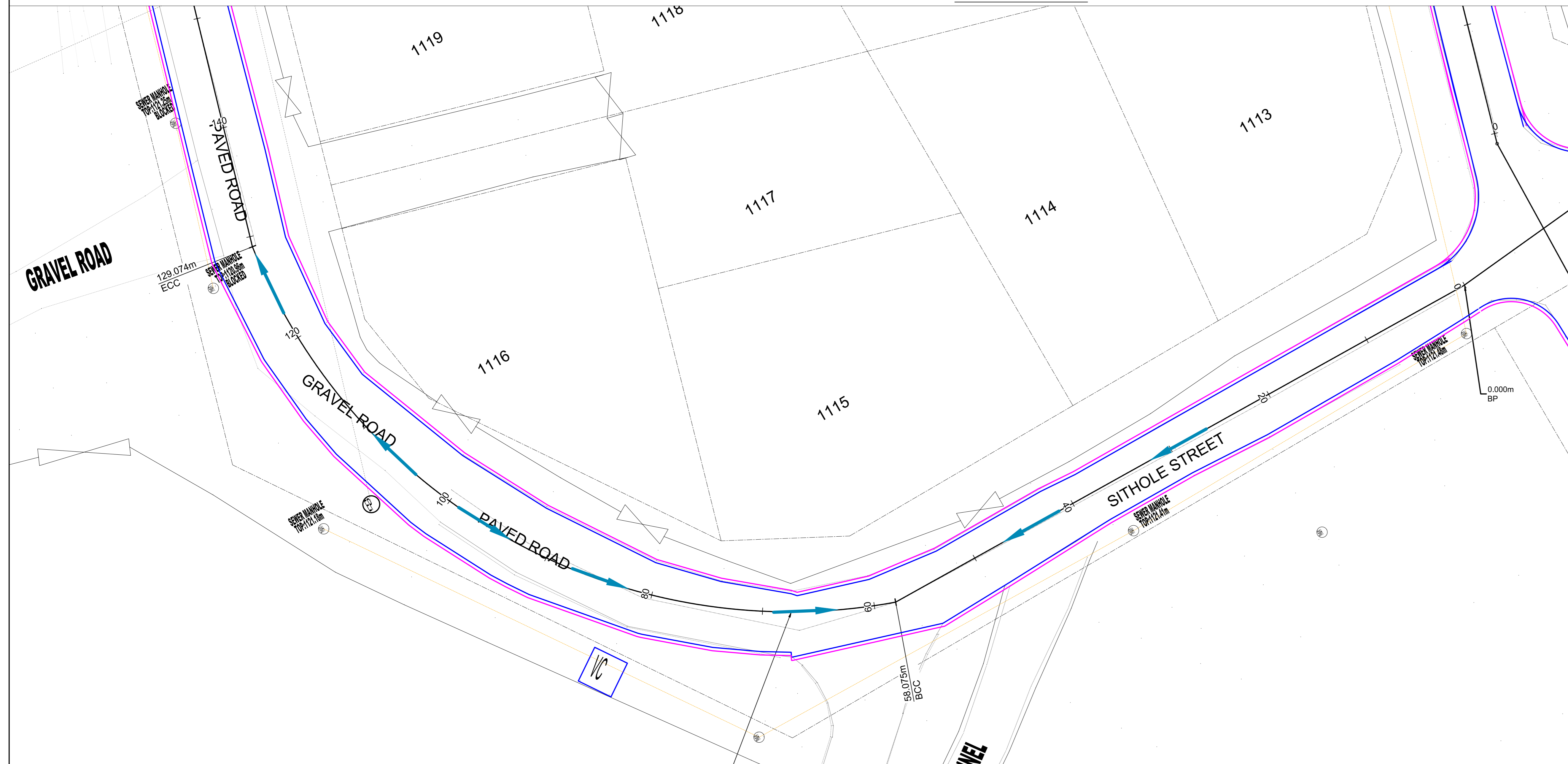
Drawing Title: **PLAN VIEW LAYOUT: MASEMOLA STREET SECTION 2 - CH+0.00 TO +173.00**

Project Stage:	STAGE 4	Designed:	V.Y. JUGATH
Scale:	A0: AS SHOWN	Drawn:	A. BUDHRAM
Date:	23 MAY 2026	Checked:	R. MATLALA
Drawing number:	BK0217-C-RD-03	Rev:	0

NOT FOR CONSTRUCTION/ FOR TENDER PURPOSES ONLY



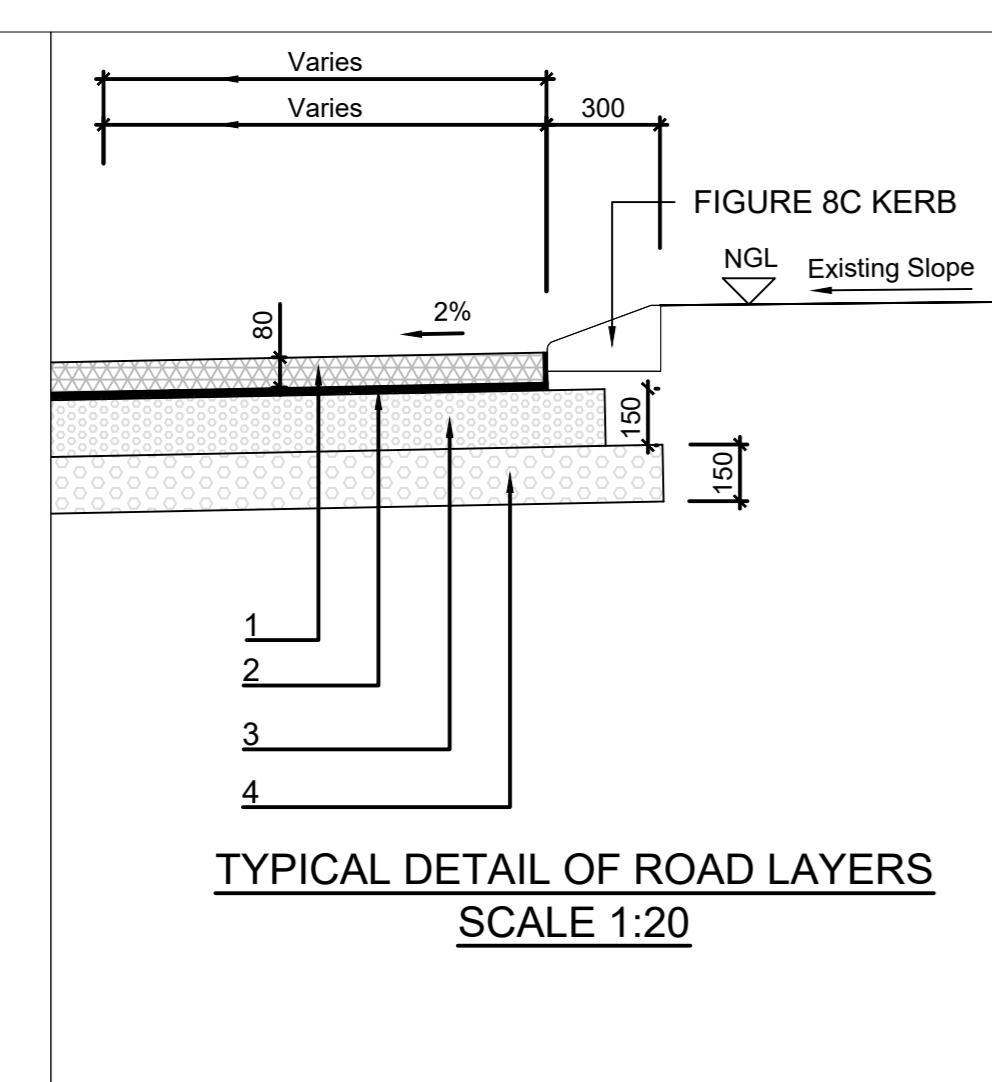
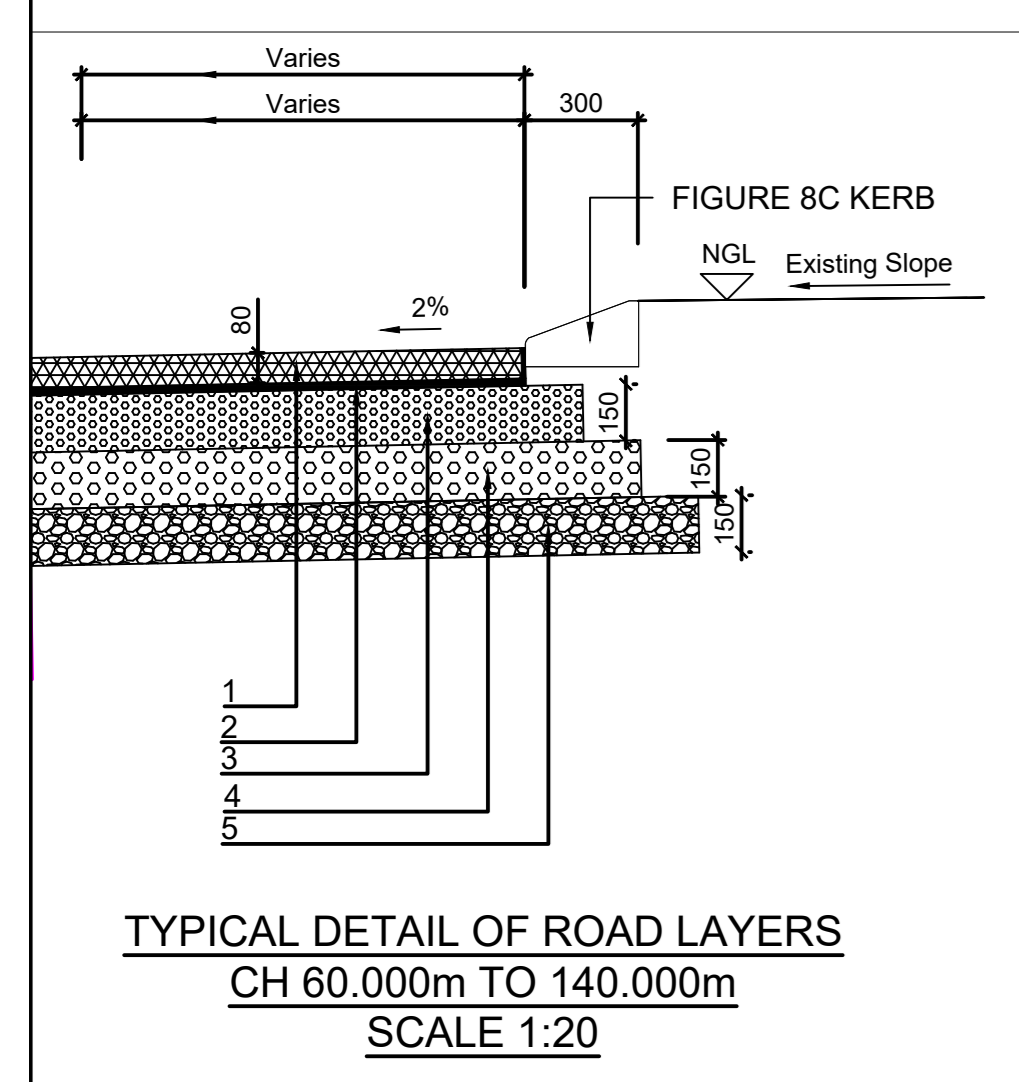
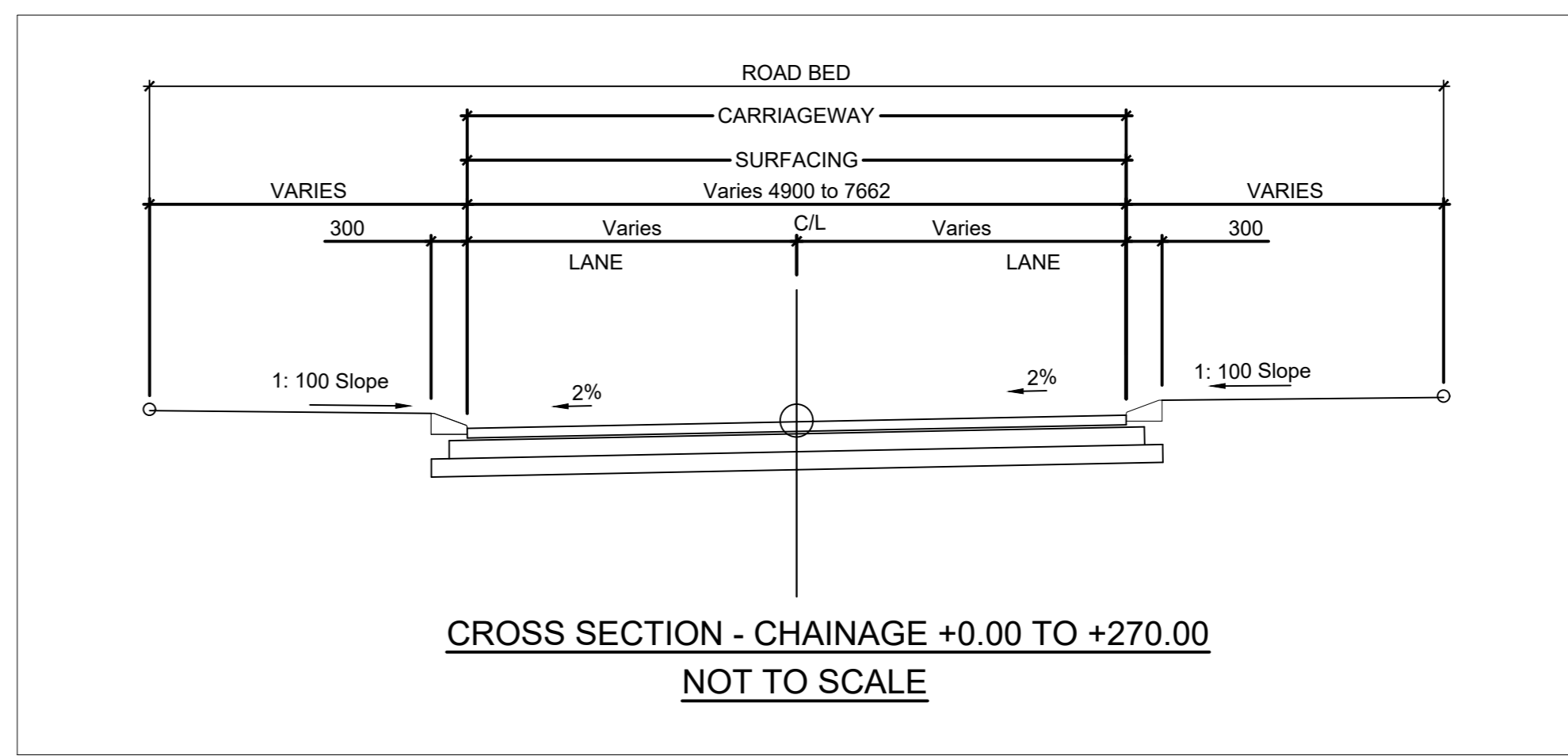
PLAN VIEW LAYOUT
SCALE 1:200



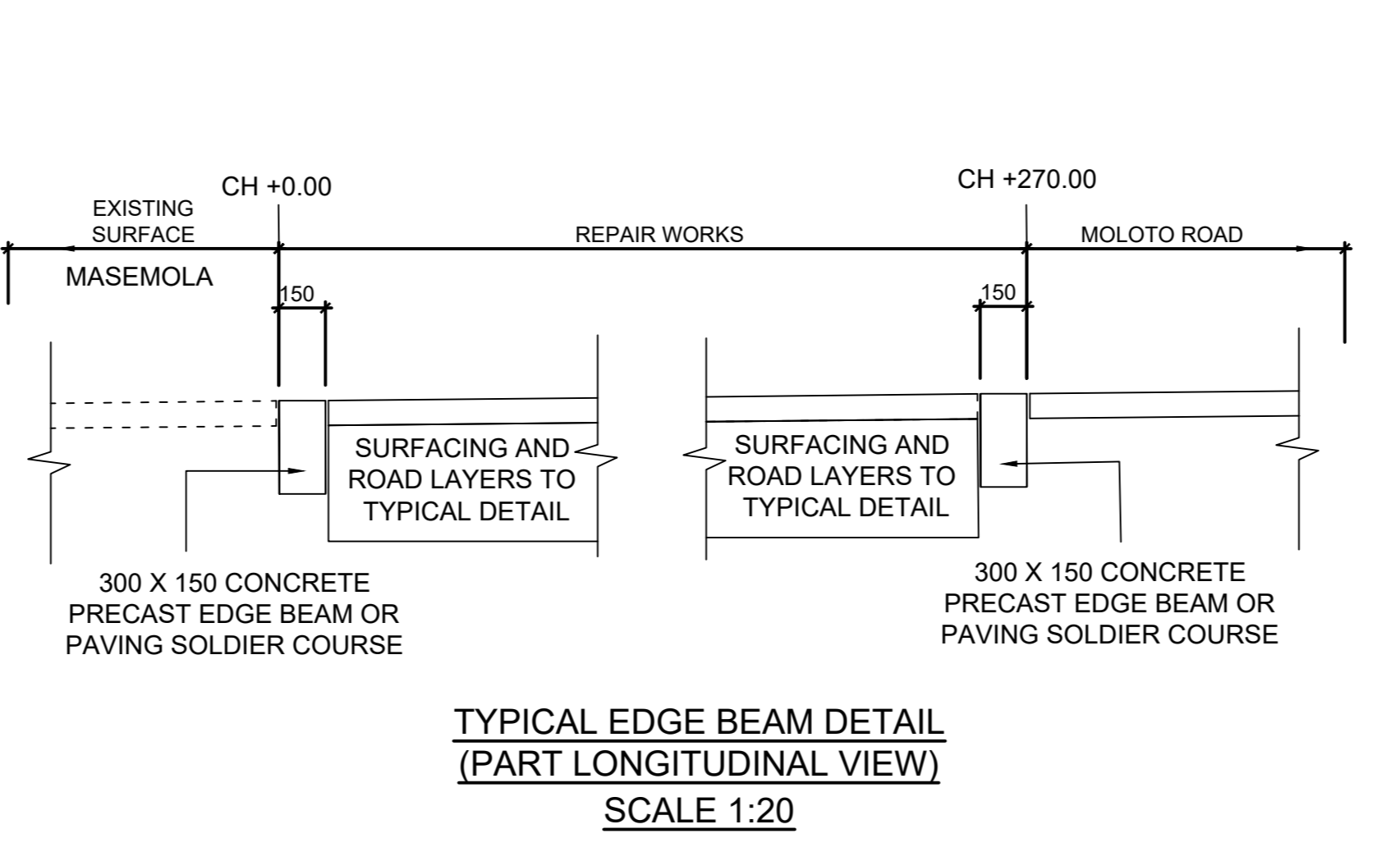
PLAN VIEW LAYOUT
SCALE 1:200

LEGEND

- Longitudinal Fall
- Cross sectional Fall
- Guard rails



NO.	THICKNESS (mm)	TYPE	MATERIAL CLASS	COMPACTION (% OF MOD. AASHTO)
1	80	SURFACING	CONCRETE INTERLOCKING PAVING BLOCKS	
2	30	BEDDING	SAND BEDDING	97% to 100%
3	150	BASE	C4	94% to 96%
4	150	SUB BASE	G5	92% to 94%



REVISION :

REV:	DATE:	COMMENTS:	BY:
0	23.05.26	FOR TENDER PURPOSES ONLY	AB

CROSS REF. DRAWINGS:

DISCIPLINE:	DRAWING NO. :

Confidentiality Note:
This drawing contains confidential information intended for a specific addressee and purpose. This information is private and protected by law. If you are not the intended recipient, you are hereby notified that any disclosure or distribution, or the taking of any action based on the contents of this information is strictly prohibited.

Stamp

CONSULTING ENGINEER

Approved for distribution :

Prepared by: Vedanth Jugath (Pr Techni Eng. 2019600247) (Design Engineer)

Signature:

Checked and Reviewed by: Thamisanga Skele (Pr Tech Eng. 9970127) (Design Lead / Engineer)

Signature:

Municipality

BELA-BELA LOCAL MUNICIPALITY

Client

BELA-BELA LOCAL MUNICIPALITY

CHRIS HANI DRIVE
BELA-BELA 0480
Tel: 014 736 8000
Email: mojlam@bela-bela.gov.za

Consultant

Bakone Consulting Engineers

HEAD OFFICE :
581, Mendelsohn Street
Constatia Park, Pretoria
P.O. Box 72360, Lynnwood Ridge, 0040
Tel: 012 998 1225
Fax: 012 998 1169
Email: bakone@bakonegroup.co.za

Discipline: **CIVIL ENGINEERING**

Project Description: **REPAIR OF MASEMOLA-MOLOTO STREET (PAVEMENT) (WARD 2)**

Client Project no.: 9/3/1/436

Drawing Title: PLAN VIEW LAYOUT: MOLOTO STREET CH+0.00 TO +270.00

Project Stage: STAGE 4

Scale: A0: AS SHOWN

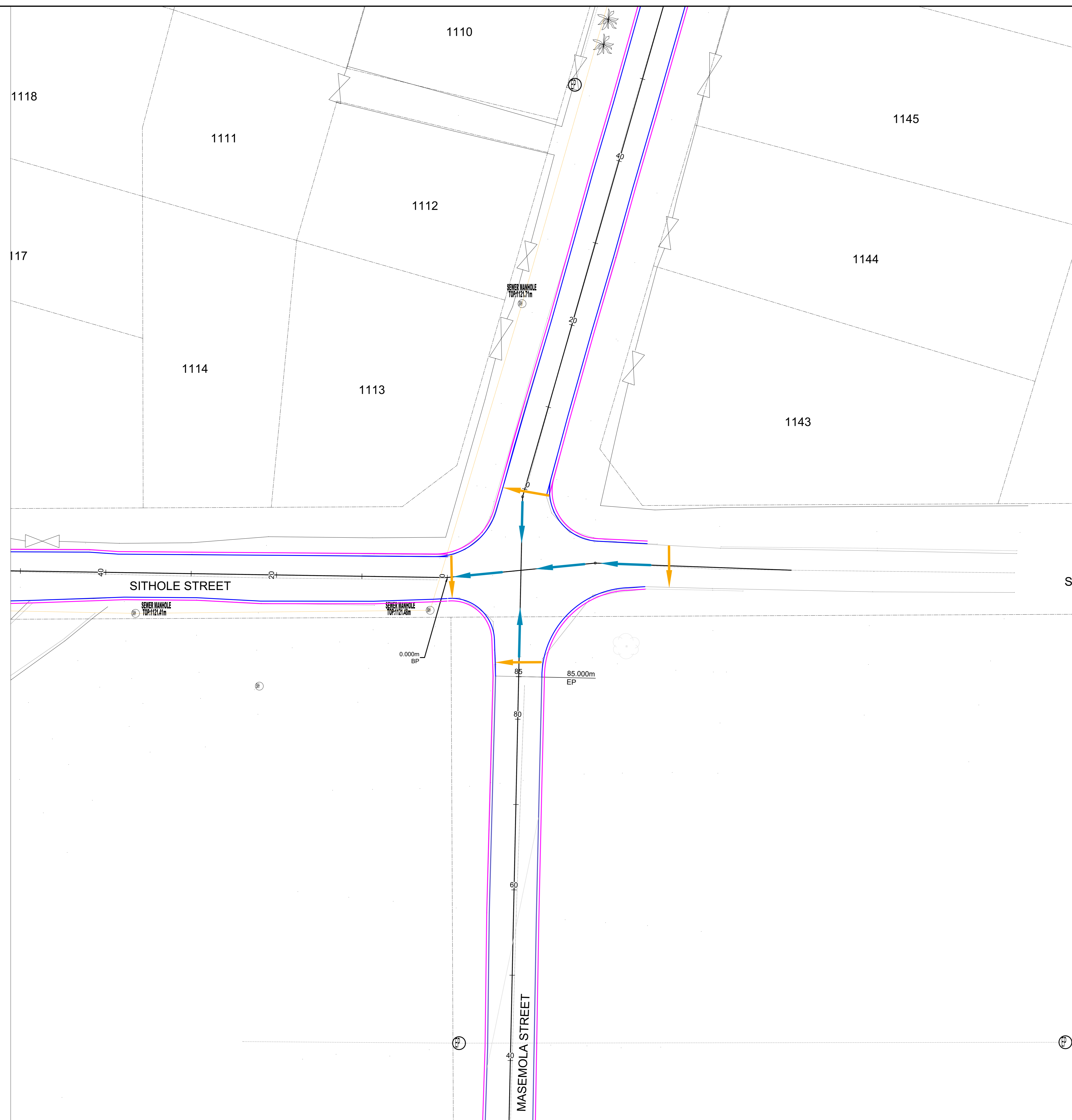
Date: 23 MAY 2026

Drawing number: BK0217-C-RD-04

Designed: V.V. JUGATH
Drawn: A. BUDHRAM
Checked: R. MATLALA
T.P. SKELE

Rev: 0

NOT FOR CONSTRUCTION/ FOR TENDER PURPOSES ONLY



LEGEND

- Longitudinal Fall
- Cross sectional Fall
- Guard rails

REVISION :

REV:	DATE:	COMMENTS:	BY:
0	23.05.26	FOR TENDER PURPOSES ONLY	AB

CROSS REF. DRAWINGS:

DISCIPLINE:	DRAWING NO. :

Confidentiality Note:
This drawing contains confidential information intended for a specific addressee and purpose. This information is private and protected by law. If you are not the intended recipient, you are hereby notified that any disclosure or distribution, or the taking of any action based on the contents of this information is strictly prohibited.

Stamp

CONSULTING ENGINEER

Approved for distribution :

Prepared by:	Vedanth Jugath (Pr Techni Eng. 2019600247) (Design Engineer)
Signature:	
Checked and Reviewed by:	Thamisanga Skele (Pr Tech Eng. 9970127) (Design Lead / Engineer)
Signature:	

Municipality

BELA-BELA LOCAL MUNICIPALITY

Client

BELA-BELA LOCAL MUNICIPALITY

CHRIS HANI DRIVE
BELA-BELA 0480
Tel: 014 736 8000
Email: mojlam@belabela.gov.za

Consultant

Bakone Consulting Engineers

HEAD OFFICE :
581, Mendelsohn Street
Constatia Park, Pretoria
P.O. Box 72360, Lynnwood Ridge, 0040
Tel: 012 998 1225
Fax: 012 998 1169
Email: bakonepta@bakonegroup.co.za

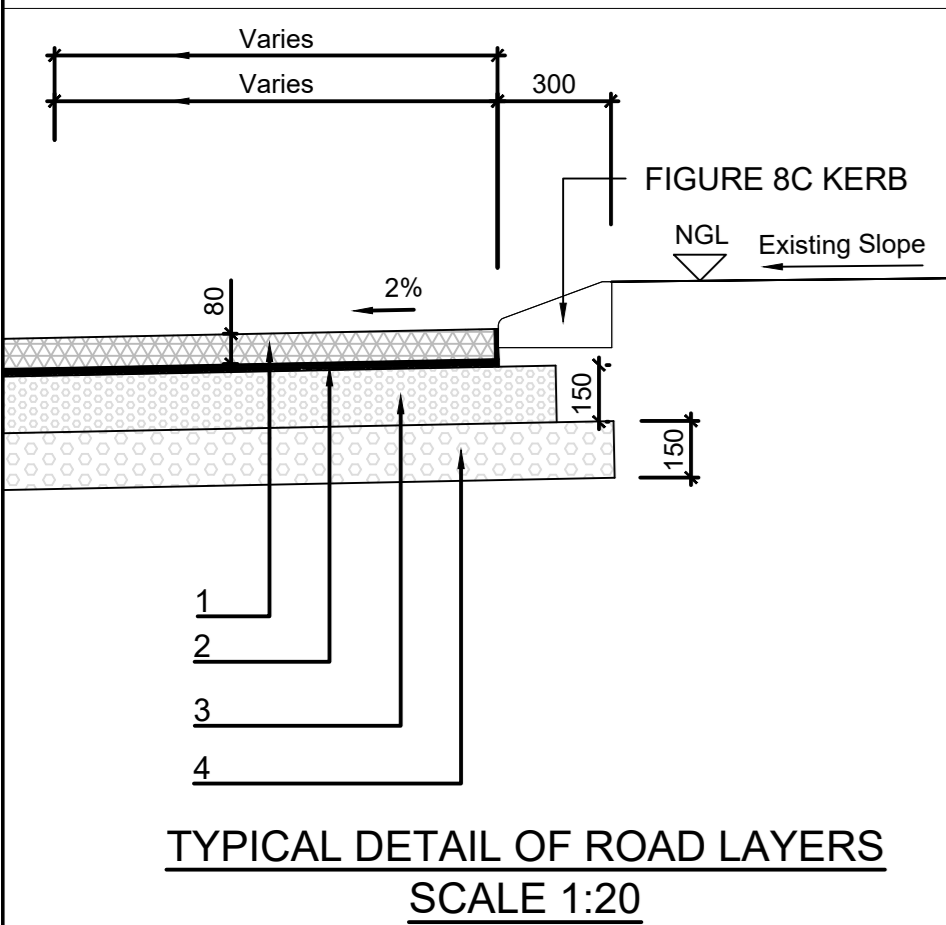
Discipline
CIVIL ENGINEERING

Project Description
REPAIR OF MASEMOLA-MOLOTO STREET (PAVEMENT) (WARD 2)

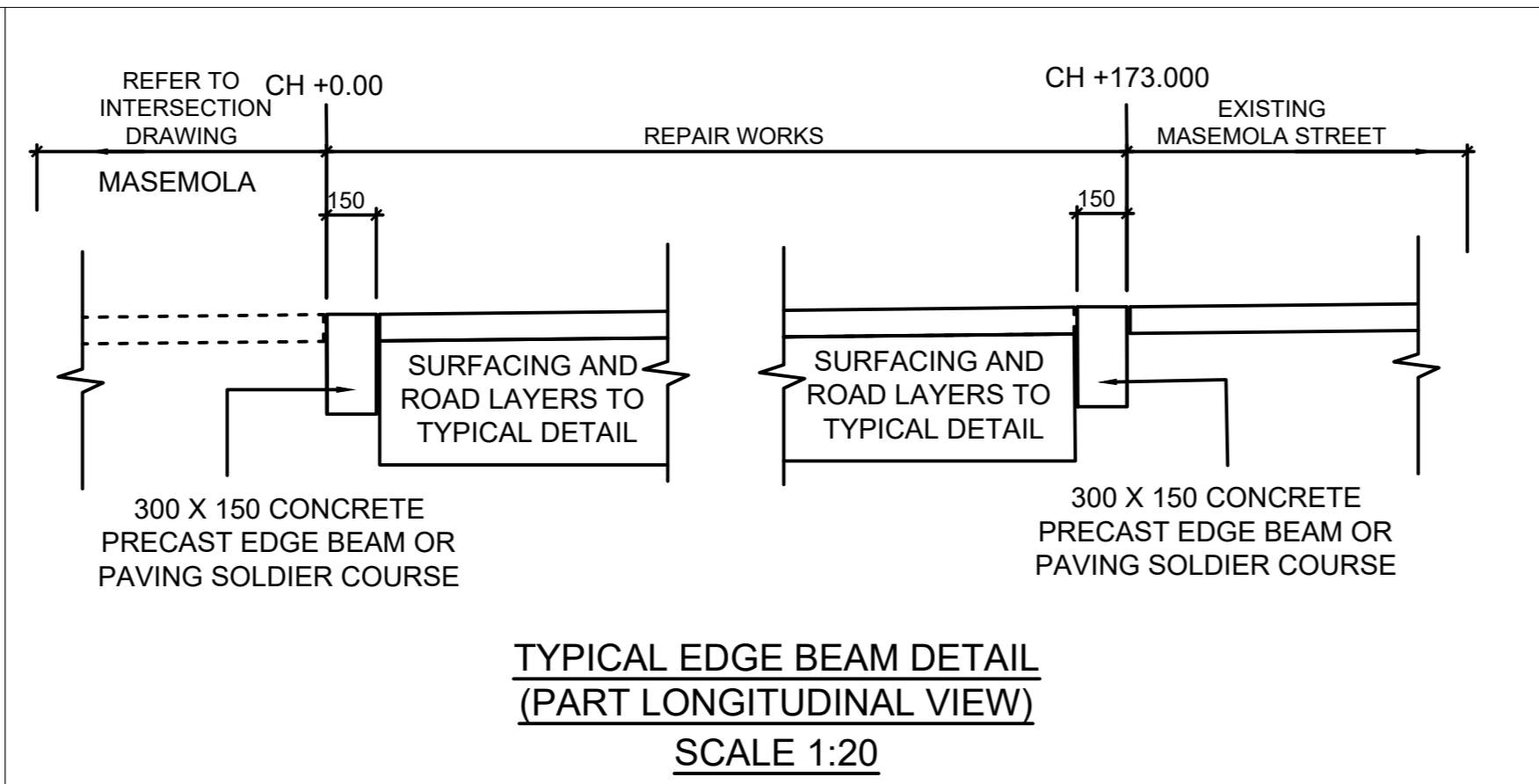
Client Project no. 9/3/1/436

Drawing Title
PLAN VIEW LAYOUT: MASEMOLA STREET SITHOLE STREET INTERSECTION

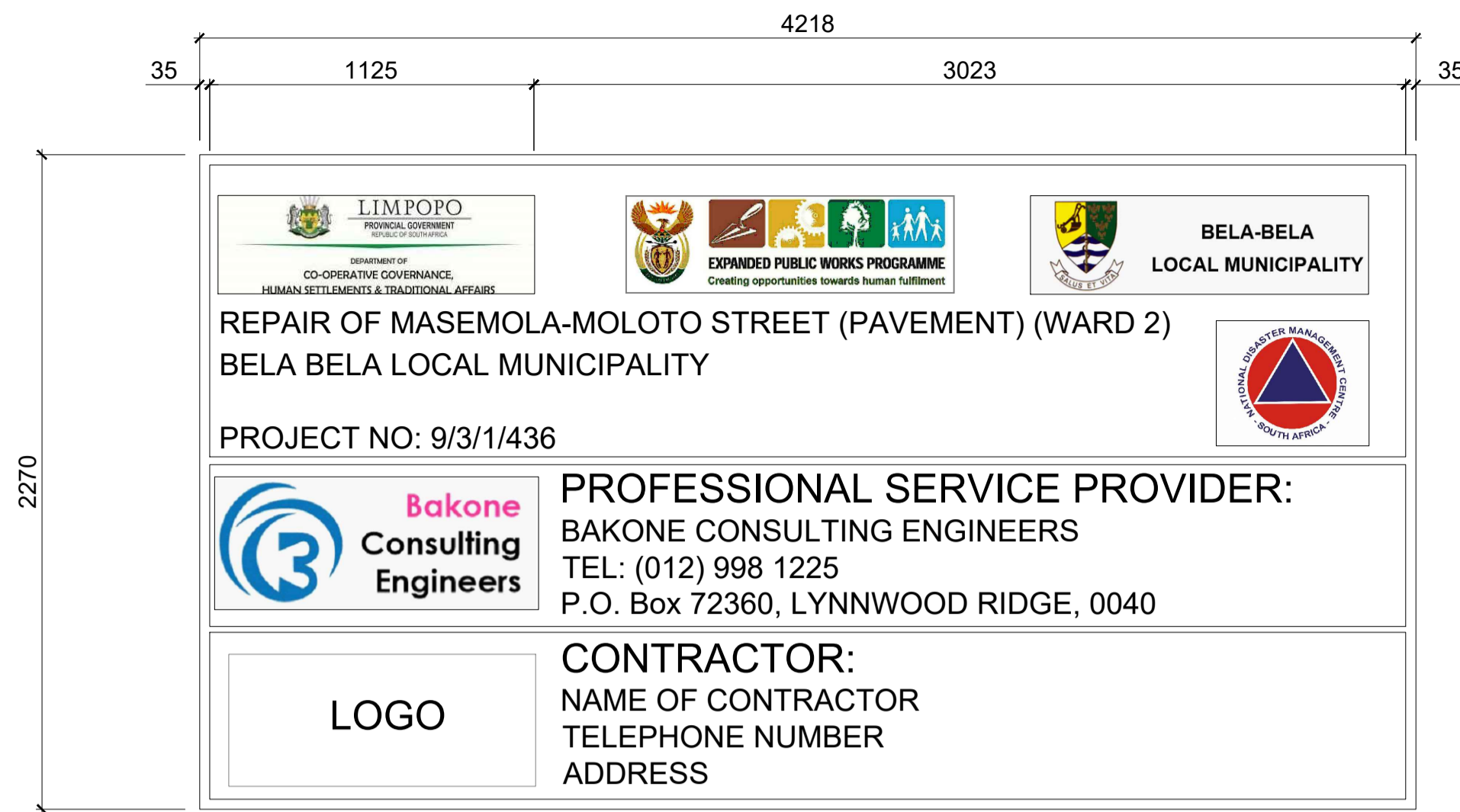
Project Stage:	STAGE 4	Designed:	V.Y. JUGATH
Scale:	A0: AS SHOWN	Drawn:	A. BUDHRAM
Date:	23 MAY 2026	Checked:	R. MATLALA
Drawing number:	BK0217-C-RD-05	Rev:	0



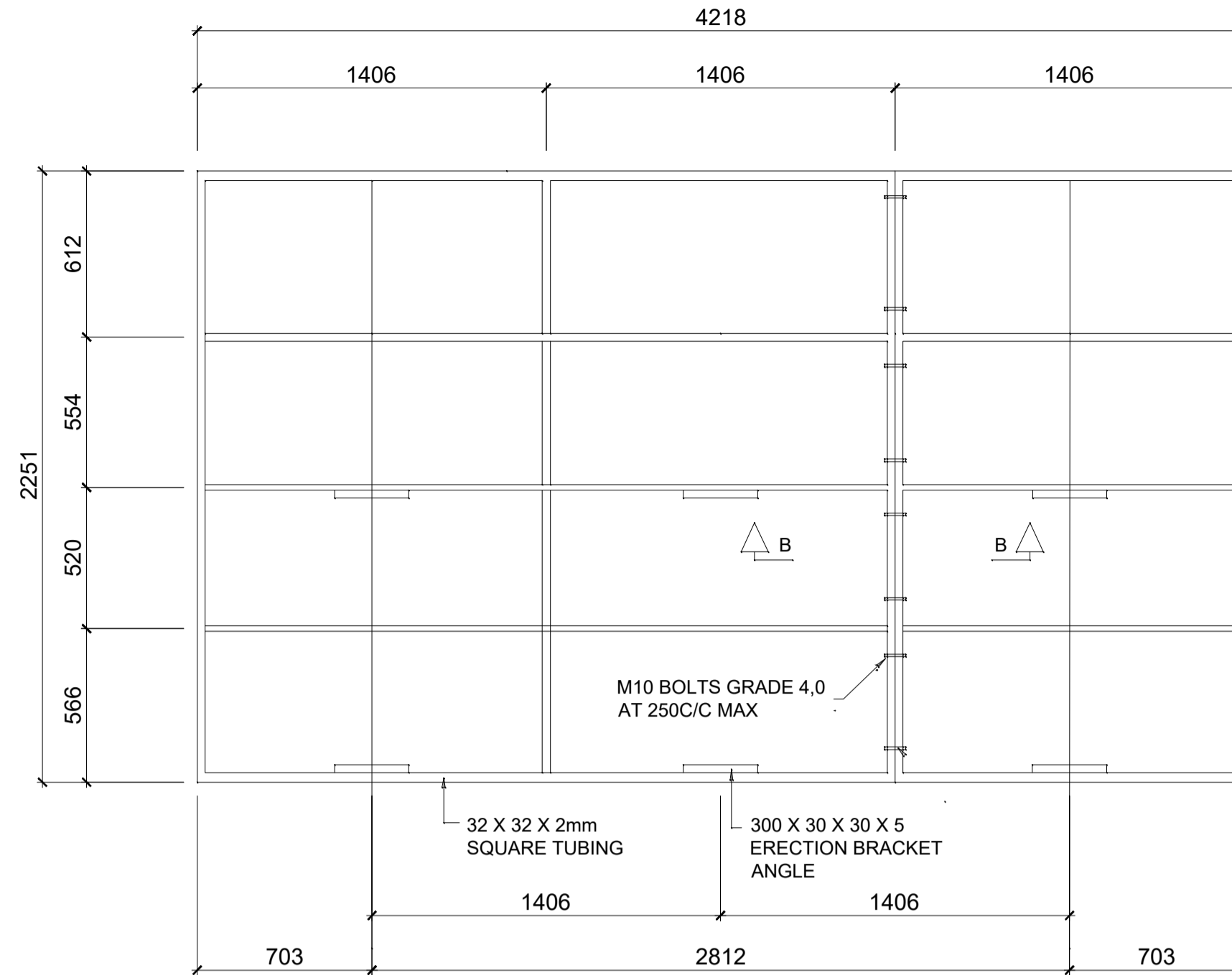
LAYER				
NO.	Thickness (mm)	Type	MATERIAL CLASS	COMPACTION (% OF MOD. AASHTO)
1	80	SURFACING	CONCRETE INTERLOCKING PAVING BLOCKS	
2	30	BEDDING	SAND BEDDING	97% to 100%
3	150	BASE	C4	94% to 96%
4	150	SUB BASE	G5	92% to 94%



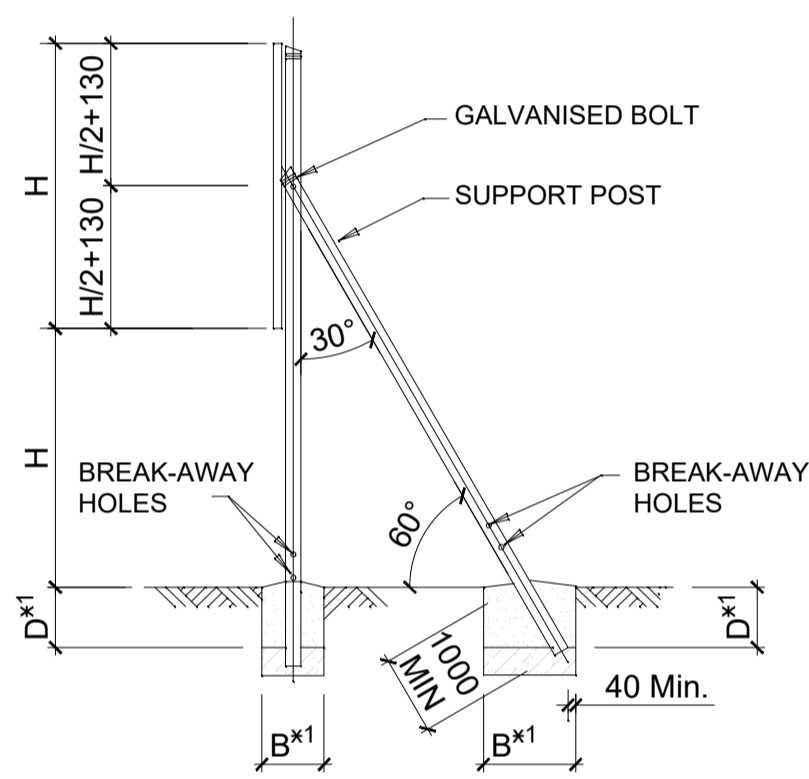
NOT FOR CONSTRUCTION/ FOR TENDER PURPOSES ONLY



FRONT ELEVATION
SCALE 1:20

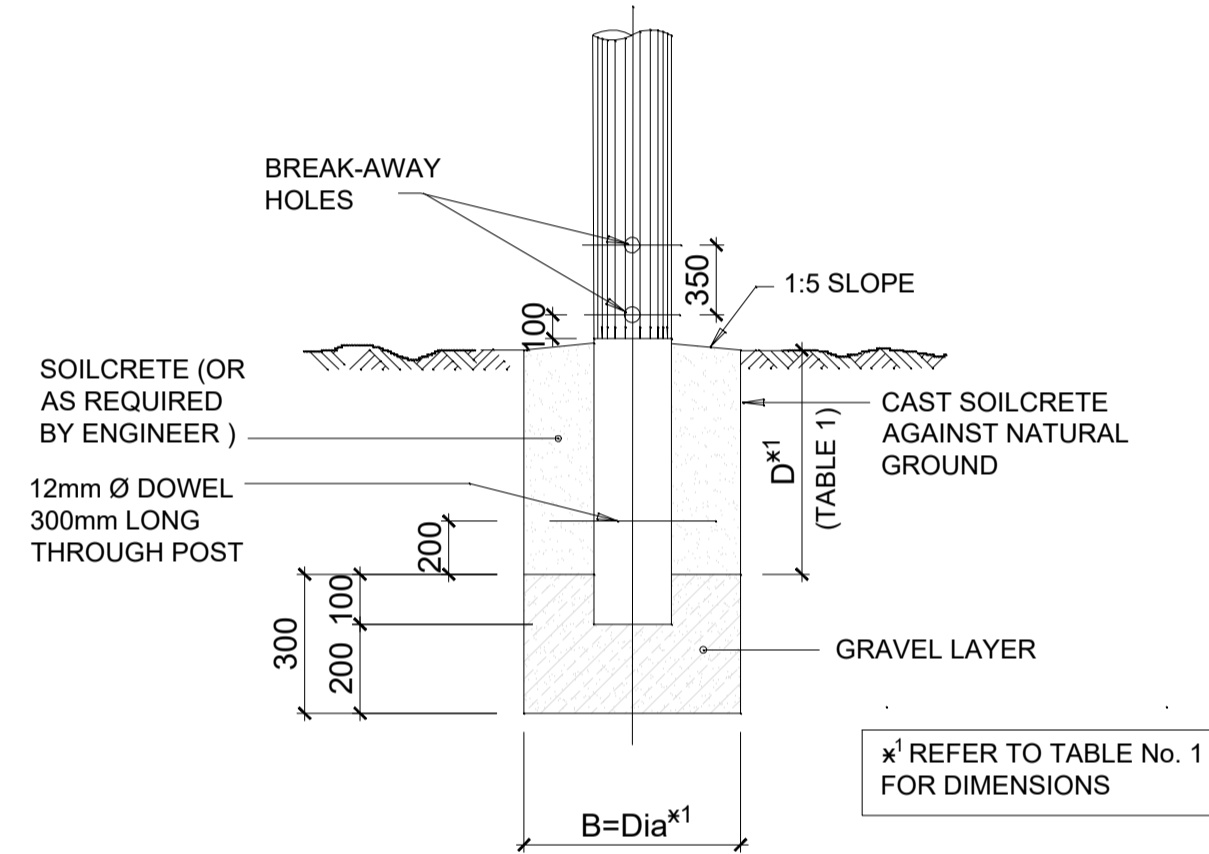


REAR SIDE BRACING



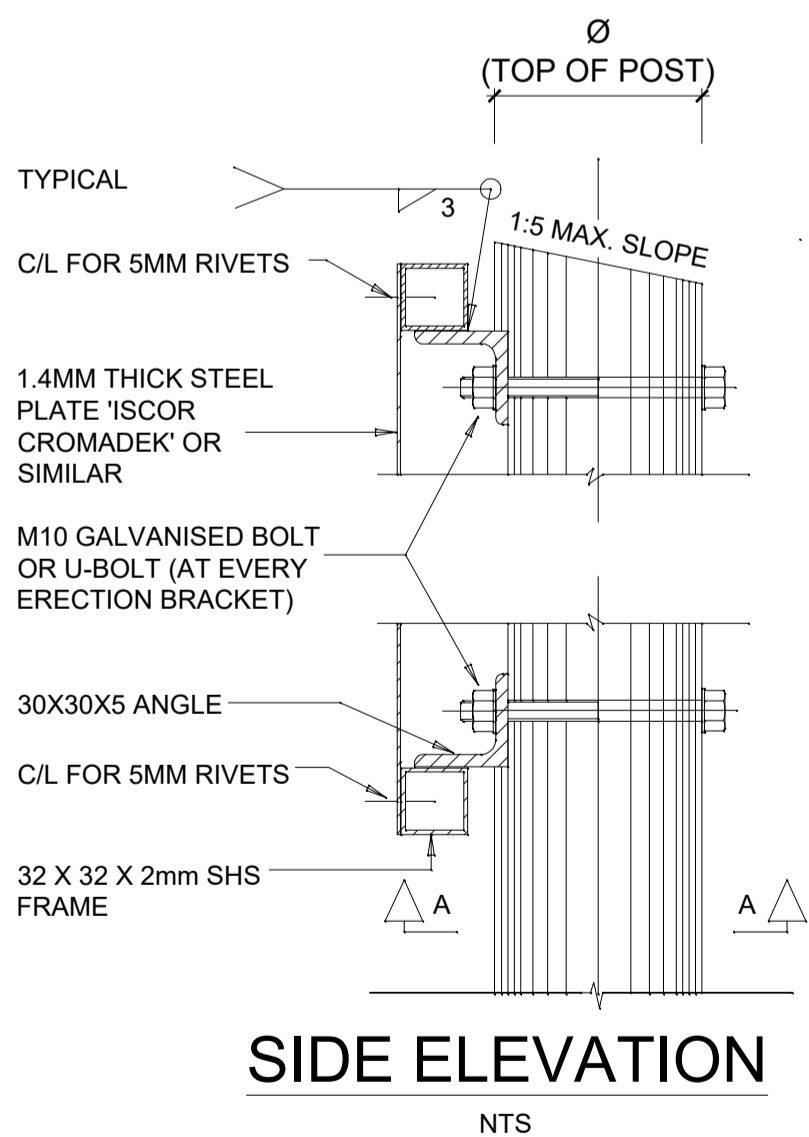
SIDE ELEVATION OF ROAD SIGN

DETERMINATION OF BREAK-AWAY HOLES	
POLE DIA (mm)	HOLE DIA (mm)
< - 140	NONE
141 - 170	40
171 - 200	50
201 - 225	65



FOUNDATION DETAIL

- NOTES:**
- EMBLEME:**
- ALL EMBLEMS TO BE DISPLAYED IN FULL COLOUR ON A SEMI-MATT SMOKE-GREY BACKGROUND
- LETTERS AND NUMBERS:**
- DESCRIPTION: MATT-BLACK, SERIES DIN B LETTERS AND NUMBERS ON A SEMI-MATT SMOKE-GREY BACKGROUND
- BORDERS:**
- BORDER: GREEN NON-REFLECTORIZED
- QUANTITY**
- TWO SIGN BOARDS, SHALL BE ERECTED AT POSITIONS DETERMINED BY THE ENGINEER
- DESCRIPTION**
- DESCRIPTION OF WORK (NUMBER OF KILOMETERS AND TYPE OF WORK, eg '13.5km RECONSTRUCTION OF ROAD 1974.' DESCRIPTION STARTS CENTERED ON THE LEFT-HAND SIDE AND THE FIRST 105mm DIMENSIONS BELOW 'ROADS AGENCY LIMPOPO'
 - SAFCEC EMBLEM ONLY IF CONTRACTOR IS A MEMBER OTHERWISE BLANK.
 - NEW SAACE LOGO TO BE OBTAINED FROM SAACE, JOHANNESBURG



SIDE ELEVATION

SECTION A-A (WITH BOLT)

ELEVATION OF ERECTION BRACKET

SECTION A-A (WITH U-BOLT)

SECTION B-B (AT JOINT OF SIGN)

FIXING DETAIL FOR SIGN BOARDS

TABLE 1: DETERMINATION OF POSTS AND FOOTINGS ERECTION DETAILS				
TYPE OF POST	UPRIGHT	STAY	D	B(DIA)
TIMBER POST AND STAY	100mm	80mm	600mm	850mm
TIMBER POST	180mm	-	1000mm	1450mm
D SECTION STEEL POST	100mm X 4mm	-	1000mm	1450mm

NOT FOR CONSTRUCTION FOR TENDER PURPOSES ONLY

REVISION :			
REV:	DATE:	COMMENTS:	BY:
0	23.05.26	FOR TENDER PURPOSES ONLY	AB

Stamp

CONSULTING ENGINEER	
Approved for distribution :	
Prepared by:	Vedanth Jugath (Pr Techni Eng. 2019600247) (Design Engineer)
Signature:	
Checked and Reviewed by:	Thamisanqa Skele (Pr Tech Eng. 9970127) (Design Lead / Engineer)
Signature:	

Municipality

BELA-BELA LOCAL MUNICIPALITY

Client

BELA-BELA LOCAL MUNICIPALITY

CHRIS HANI DRIVE
BELA BELA 0480
Tel: 014 736 8000
Email: mojlam@belabela.gov.za

Consultant

Bakone Consulting Engineers

HEAD OFFICE :
581, Mendelssohn Street
Constantia Park, Pretoria
P.O. Box 72360, Lynnwood Ridge, 0040
Tel: 012 998 1225
Fax: 012 998 1169
Email: bakonepta@bakonegroup.co.za

Discipline
CIVIL ENGINEERING

Project Description
REPAIR OF MASEMOLA-MOLOTO STREET (PAVEMENT) (WARD 2)

Client Project no.	9/3/1/436
Drawing Title	CONSTRUCTION SIGN BOARD
Project Stage.	STAGE 4
Scale	A0: AS SHOWN
Date	23 MAY 2026
Drawing number	BK0217-C-RD-06
Designed	V.Y. JUGATH
Drawn	A. BUDHRAM
Checked	R. MATLALA
	T.P. SKELE
Rev	0