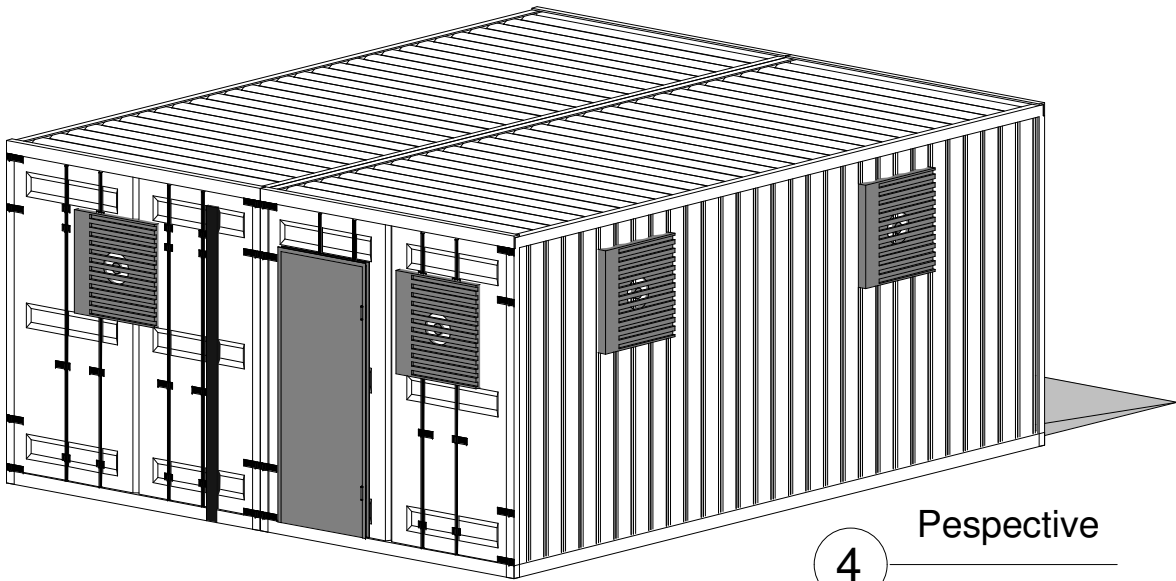
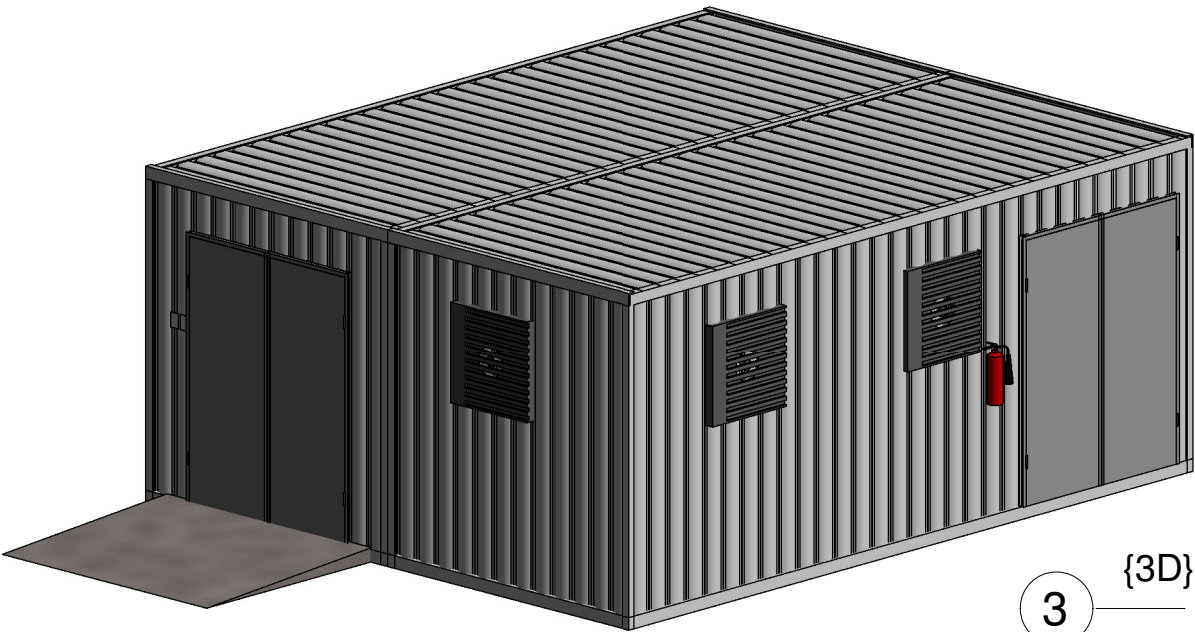
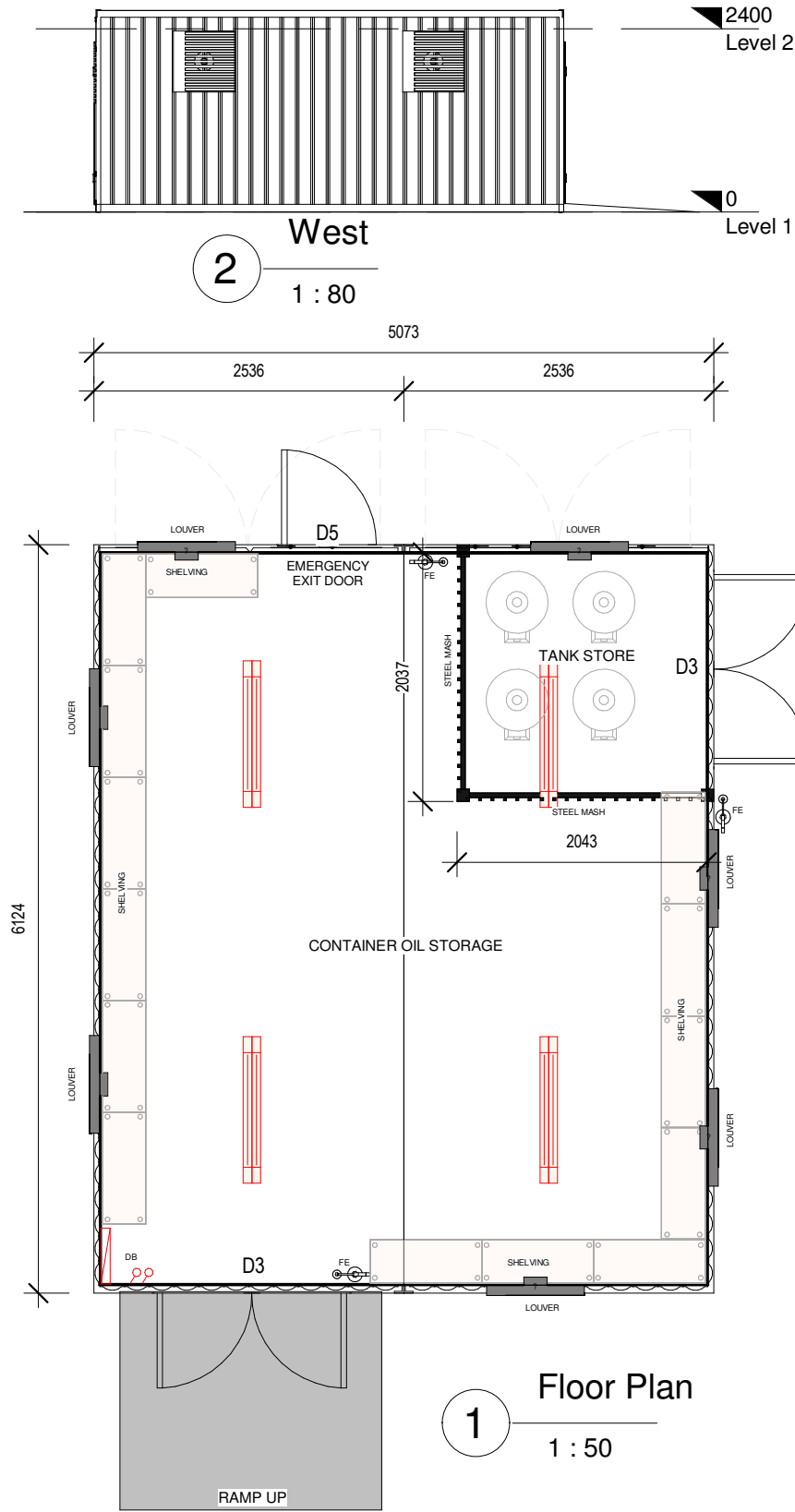


SYM	DESCRIPTION	QTY
FOUNDATION		
	25MPA CONCRETE	-
	SUSPENDED FLOOR	-
DOOR		
D1	SINGLE PANEL DOOR	-
D2	SINGLE PANEL DOOR INTERNAL	-
D3	DOUBLE DOOR HINGE	02
D4	DOUBLE PANEL DOOR with VIEWING PANEL	-
D5	EMERGENCY DOOR with PUSH BAR	01
D6	DOUBLE DOOR GLASS	-
D8	2100x2000mm ROLLER SHUTTER DOOR	-
WINDOWS		
A	500x600mm TOP HUNG ALUMINIUM WINDOW OBS	-
B	900x900mm TOP HUNG ALUMINIUM WINDOW	-
C	900x1200mm TOP HUNG ALUMINIUM WINDOW	-
D	900x900mm SLIDING ALUMINIUM WINDOW	-
E	900x1200mm SLIDING ALUMINIUM WINDOW	-
F	1800x900mm SLIDING ALUMINIUM WINDOW	-
G	900x900mm FIXED ALUMINIUM WINDOW	-
H	900x1200mm FIXED ALUMINIUM WINDOW	-
I	1800x900mm FIXED ALUMINIUM WINDOW	-
ELECTRICAL		
	DISTRIBUTION BOARD	01
	1.2m DOUBLE FLOURESCENT LIGHT WITH GLOBES	04
	EXTERNAL BULK HEAD LIGHT	03
	BOWL TYPE FITTING LIGHT	-
	CEILING LIGHT WITH FAN	-
	LIGHT SWITCH 1 LEVER	02
	LIGHT SWITCH 2 LEVER	-
	STOVE POINT	-
	DOUBLE PLUG 16amp	-
	3 PHASE PLUG 380V	-
	ISOLATOR POINT	-
	POWER SKIRTING	-
	LOUVERS	07
	WATER CONNECTION POINT	-
	GASS CONNECTION POINT	-
PLUMBING		
WC	PORCELAIN CLOSE COUPLE TOILET	-
UR	PORCELAIN URINAL	-
WHB	STAINLESS STEEL HAND WASH BASIN	-
DS	DOUBLE SINK WITH SINK MIXER	-
SS	SINGLE SINK WITH SINK MIXER	-
SH	SHOWER TRAY	-
SH1	BUILT IN SHOWER	-
SC	SHOWER CURTAIN	-
CE	CORNER ENTRY SHOWER CUBICLE	-
FD	FLOOR DRAIN	-
ROOF		
	MONO PITCH ROOF & WHITE SPAN SHEETING	-
	LSF TRUSSES & WHITE SPAN SHEETING	-
OPTIONAL EXTRAS		
FLOOR COVER		
CT	CERAMIC FLOOR TILES	-
CF	EPOXY FLOORING	-
VT	VINYL TILES	-
PF	CONCRETE PAINTED FLOORING	-
RF	RUBBERISED FLOORING (HEAVY DUTY)	31m²
CEILING		
40C	40mm SANDWICH CROMADEK PANEL CEILING	-
60C	60mm SANDWICH CROMADEK PANEL CEILING	-
SUC	SUSPENDED CEILING	-
PVC	PVC CEILING	-
AIRCONS		
BTU9	9000 BTU AIR-CONDITIONER (COOLING & HEATING)	-
BTU12	12000 BTU AIR-CONDITIONER (COOLING & HEATING)	-
BTU18	18000 BTU AIR-CONDITIONER (COOLING & HEATING)	-
BTU24	24000 BTU AIR-CONDITIONER (COOLING & HEATING)	-
GEYSERS		
50l	WATER HEATER 50 LITRE	-
100l	WATER HEATER 100 LITRE	-
150l	WATER HEATER 150 LITRE	No
200l	WATER HEATER 200 LITRE	-
250l	WATER HEATER 250 LITRE	-
ACCESSORIES		
Ver	1500mm VERANDA	No
SG	SECURITY GATES	No
SG	RAIN WATER GOODS	No
FS	FLY SCREENS	No
BL	BLINDS	No
AW	AWNINGS	No
FE	FIRE EXTINGUISHER	03



Perspective

DRNG PROJECTS
Pty Ltd

The information contained herein is proprietary and confidential.
This is a controlled drawing & unauthorized copying is not
permissible.

Building System Type :

CONTAINER SYSTEM

Building Code :

CC-S001-A1

Rev

PROJECT NAME

Client Name: Gibela -Rail Transport Consortium
Project Address: Walmerton Site

DRAWING DESCRIPTION

Building Description:

Oil Storage TSSSA

Drawing Description: Architectural Layout

NOTE:

Drawing is for illustration purposes only not for
construction, dimensions & specifications may vary.
1. All drawings to be approved by client for
construction.
2. All site clearing and leveling is to be done by
client unless quoted for.
3. All Furniture & Equipment Is for Illustration purpose
only And May be subject to change to
Accommodate Client's & Site Requirements