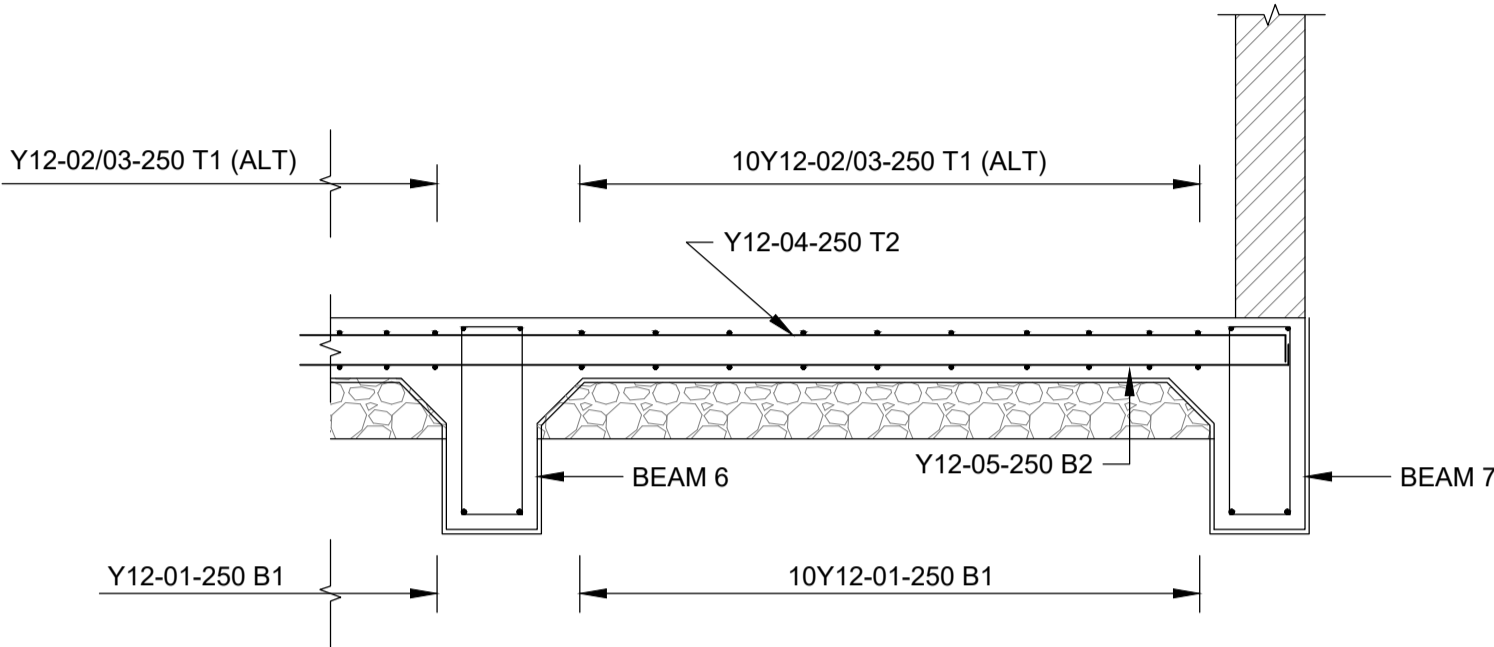


GENERAL AND TYRE STORAGE FOUNDATION REINFORCEMENT LAYOUT
SCALE 1:50



SECTION A-A
SCALE 1:25

MEMBER	No. Off	REINFORCEMENT					BENDING DIMENSIONS					
		Type & Dia	Mark	No in Each	Total No.	Length mm	Shape Code	A mm	B mm	C mm	D mm	E/R mm
200mm THICK RC FLOOR SLAB	1	Y12	01	60	60	2540	37	140	2425			
		Y12	02	30	30	1730	37	140	1615			
		Y12	03	30	30	3340	37	140	3230			
		Y12	04	30	30	4410	37	130	4305			
		Y12	05	15	15	2970	37	130	2870			
		Y12	06	15	15	5840	37	130	5740			
		Y10	ST1	38	38	820	83	250	85	250	250	
BEAM 1 (700Dx 300W)	1	Y12	07	2	2	8440	38	150	8200	150		
		Y16	08	2	2	8520	38	200	8200	200		
		R10	SA1	32	32	1730	60	600	200			
BEAMS 2 & 3 (700Dx 300W)	2	Y12	09	2	4	8210	38	150	7970	150		
		Y16	10	2	4	8290	38	200	7970	200		
		R10	SA1	31	62	1730	60	600	200			
BEAMS 4, 5, 6 & 7 (700Dx 300W)	4	Y12	11	2	8	4450	38	150	4205	150		
		Y16	12	2	8	4530	38	200	4205	200		
		R10	SA1	16	64	1730	60	600	200			

GENERAL NOTES

- All work to be in accordance with the NATIONAL BUILDING REGULATIONS and STANDARDS ACT No. 103 of 1977
- All drawings to be read in conjunction with the Architect's relevant drawings.
- All dimensions to be checked on site and any discrepancies to be reported before construction commences.
- No concrete to be poured without the Engineer's consent.
- No structural alterations to be made without amended drawings
- TD = To detail, INV = Inverted, TAD = To arch. detail
- Sleeves and ducts must be provided for all pipes and services.

NOTES ON FOUNDATION CONSTRUCTION

- Foundations are subject to alterations as excavations proceed.
- No foundations are to be cast until excavations have been approved.
- A 50mm thick blinding layer of 1:3:6 conc. to be cast in all foundations excavated. This 50mm thick layer is not included in the thickness of foundations shown on drawing.

NOTES ON R.C. CONSTRUCTION

- The Contractor is to maintain the reinforcing steel in the correct position.
- Minimum cover to steel reinforcing: Slabs: 30mm Beams: 30mm Columns: 40mm Foundations: 50mm
- Concrete or Tile spacer blocks to be used to maintain adequate cover.
- The contractor is to arrange for cube crushing tests to be as and when requested by the engineer.
- Breaks in concrete are only to be made where approved by the engineer.

NOTES ON CONCRETE

- Beam depth given first and includes slab thickness.
- Concrete works cube strength is at 28 days to be as follows: Foundations, Beams & Slabs, Pile Caps, Columns: 30 MPa, unless stated otherwise on the R.C. drawing.
- All concrete to be machine mixed, vibrated and damp cured.
- Reinforcement is listed elsewhere on bending schedules.
- All reinforcement must be inspected by the engineer prior to pouring concrete.

DRAWING REFERENCE

TITLE

NOTES

REVISIONS

CLIENT
**SOUTH AFRICAN
POLICE SERVICE**



Thekwini Geocivils cc T/A
TGC Engineers
Geotechnical & Civil Engineers
Waste Disposal Consultants • Project Managers

Suite 6
4 The Crescent
Westway Office Park
Westville
3611
Telephone 265-1777



P.O. Box 446
PAVILION
3611
Telefax 265-2727
E-mail: tgc@tgcengineers.co.za

PROJECT

**NEW SAPS
IKAGENG POLICE STATION:
NORTH WEST**

TITLE
**GENERAL AND TYRE STORAGE
FOUNDATION REINFORCEMENT
LAYOUT AND DETAILS**

CONSULTING ENGINEER	DESIGNED :	M.S.M
	DRAWN :	R.M.Y
SIGNATURE:.....	CHECKED :	M.S.M
	SCALE :	AS SHOWN
PR. NO.:.....	DATE :	MAY 2024
	ORIGINAL SIZE:	A1
REFERENCE NO. 51660	FIGURE NO. 130	REVISION A
CAD FILE: S/.....		

ISSUED FOR TENDER