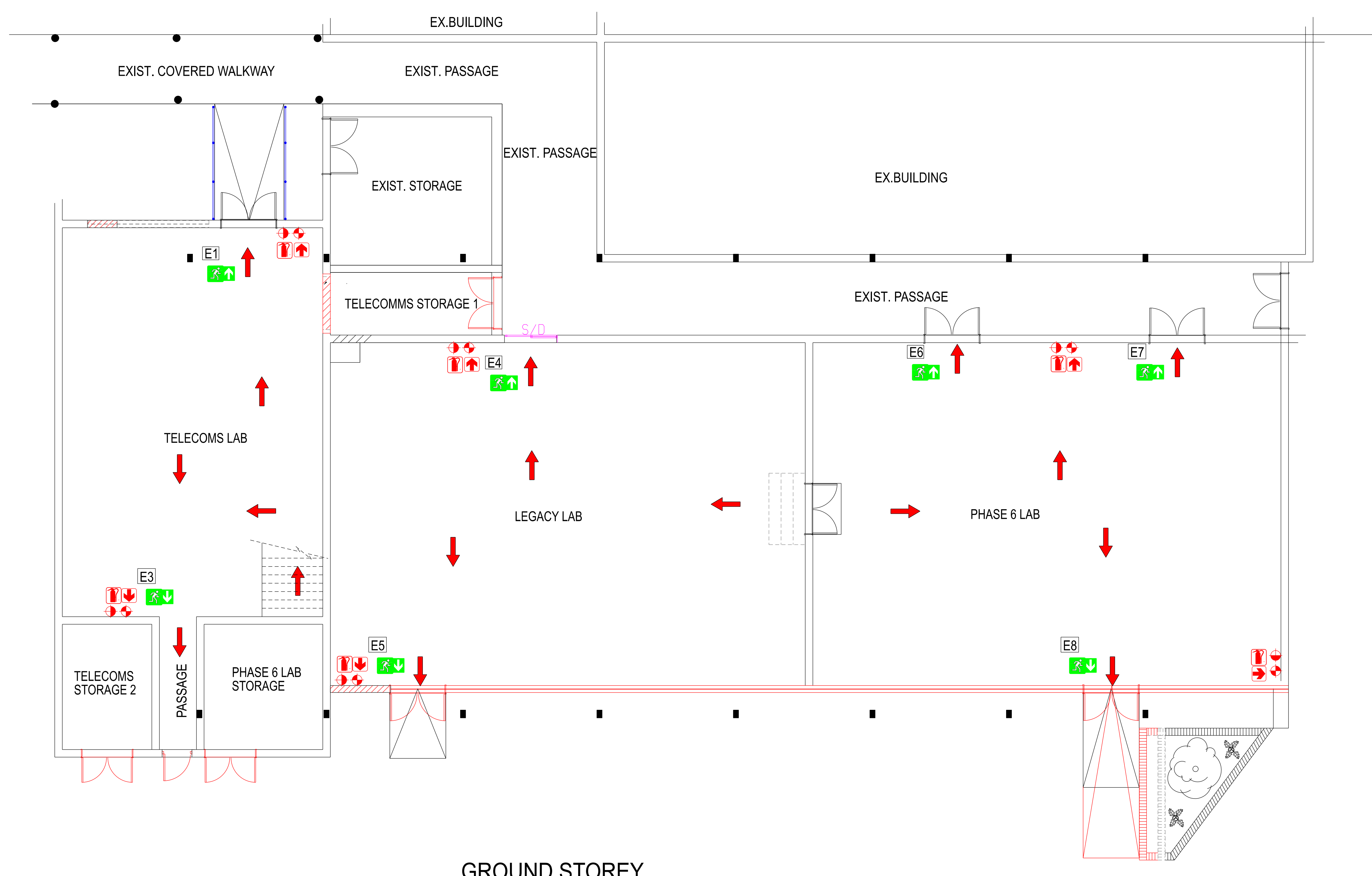
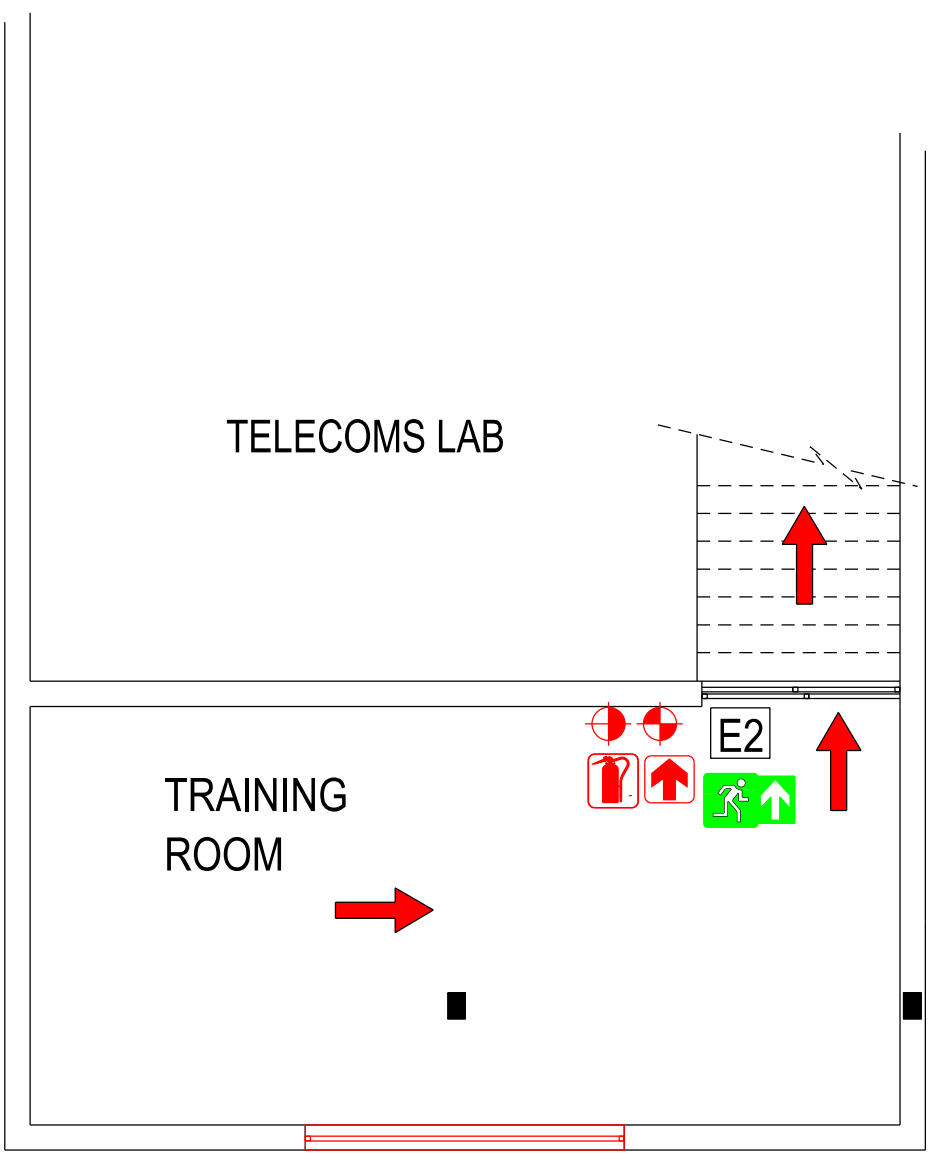


1 2 3 4 5 6 7 8 9 10 11 12 13 14 15 16

A  
B  
C  
D  
E  
F  
G  
H  
J  
K  
L  
M



**GROUND STOREY**  
SCALE: 1:00



**FIRST FLOOR - TRAINING ROOM PLAN**  
SCALE: 1:00

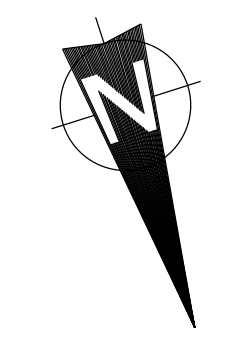
**LEGEND**

- 9kg DCP EXTINGUISHER
- 9kg CO2 EXTINGUISHER
- DIRECTION OF ESCAPE ROUTE
- FIRE EXTINGUISHER SIGN
- FIRE ESCAPE SIGN ABOVE DOOR
- E1 ESCAPE DOOR NUMBER
- UNAUTHORISED ENTRY PROHIBITED
- UNAUTHORISED ENTRY ON ENTRANCE DOOR TO CONTROL AND BATTERY ROOMS
- 120 MIN. FIREWALL BUILT UP TO ROOF COVER
- D1 46mm STEEL FIRE DOOR

**GENERAL NOTES.**

1. ALL WORK AND INSTALLATIONS TO SANS 10400-PART T SPECIFICATIONS
2. THIS DRAWING COMPLIES WITH SANS 10400 PART T
3. ALL REFERENCES MADE IN NOTES REFER TO SANS 10400 PART T
4. ALL SIGNS TO BE IN ACCORDANCE WITH THE ESKOM STATUTORY SAFETY SIGNS IN TRANSMISSION SUB STATIONS AND BUILDINGS - UNIQUE IDENTIFIER TST41-134
5. ALL FIRE EXTINGUISHERS TO BE INSTALLED WHERE SHOWN ON 25mm NOMINAL THICKNESS HARDWOOD BACKING BOARDS WITH CHAMFERED EDGES, PLUGGED & SCREWED TO WALL. HOOK HEIGHT TO BE 1m ABOVE FLOOR.
6. FIRE EXTINGUISHERS TO BE SUPPLIED AND FITTED BY CONTRACTOR.
7. LONGEST TRAVEL DISTANCE TO AN ESCAPE DOOR IS 10m AND COMPLY TO PART T 4.16.2. NO EMERGENCY ROUTE REQUIRED.
8. EXIT DOORS LEAD DIRECT INTO A COMMON PATH OF TRAVEL AND IS LESS THAN 30m. PART T 4.16.6
9. EXIT DOORS LOCKING DEVICES IS A KNOB CYLINDER AND IS CAPABLE OF BEING OPERATED IN A SINGLE MOVEMENT WITHOUT THE USE OF A KEY.
10. EXIT DOORS COMPLY WITH PART T 4.17.1
11. FOR EMERGENCY LIGHTING SEE DRAWING 0.68/2849 SHT. 1
12. FIRE DETECTION AND ALARMS IS NOT REQUIRED. BUILDING CLASSIFICATION - D4. PART T 4.31.1
13. HIGH VOLTAGE ELECTRICAL EQUIPMENT IN ROOM. NO WATER RETICULATION TO HOSE REELS ALLOWED.

08	FINISHES SCHEDULE
07	FIRE PROTECTION & SAFETY SIGNS
06	ACCESS FLOOR SPECIFICATIONS
05	DRYWALL SPECIFICATIONS
04	WINDOWS AND DOOR SCHEDULE
03	SECTIONS AND DETAILS
02	PLAN, ELEVATIONS AND DETAIL
01	DEMOLITION PLAN



**DETAILED DESIGN  
NOT FOR CONSTRUCTION**

APPROVED BY:  T Mathe DATE: 02/02/2026	 <b>Eskom</b> National Transmission Company South Africa™	National Transmission Company South Africa SOC Ltd Reg No 2021/539129/30
CHECKED BY:  S. SIBANYONI DATE: 26-11-2025	<b>SIMMERPAN COMPLEX</b> PTM& C LAB REFURBISHMENTS ENGINEERING BUILDING LABS (TELECOMS, LEGACY AND PHASE 6) FIRE PROTECTION AND SAFETY SIGNS	
DRAWN BY:  J. MATHEXGA DATE: 20/08/2025	SCALE: As Shown	SHEET NUMBER: <b>07</b> REVISION: <b>0</b>
SIMCOP25P02-SE-D50		SIZE: A11

1 2 3 4 5 6 7 8 9 10 11 12 13 14 15 16