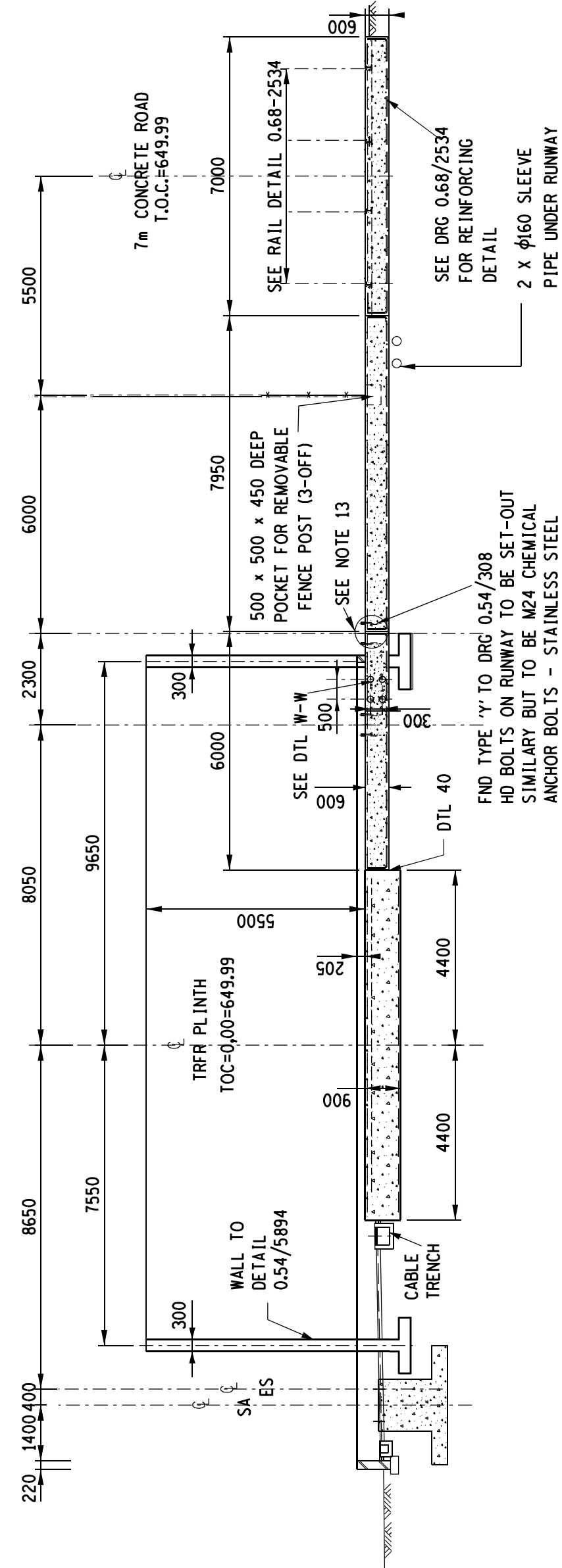
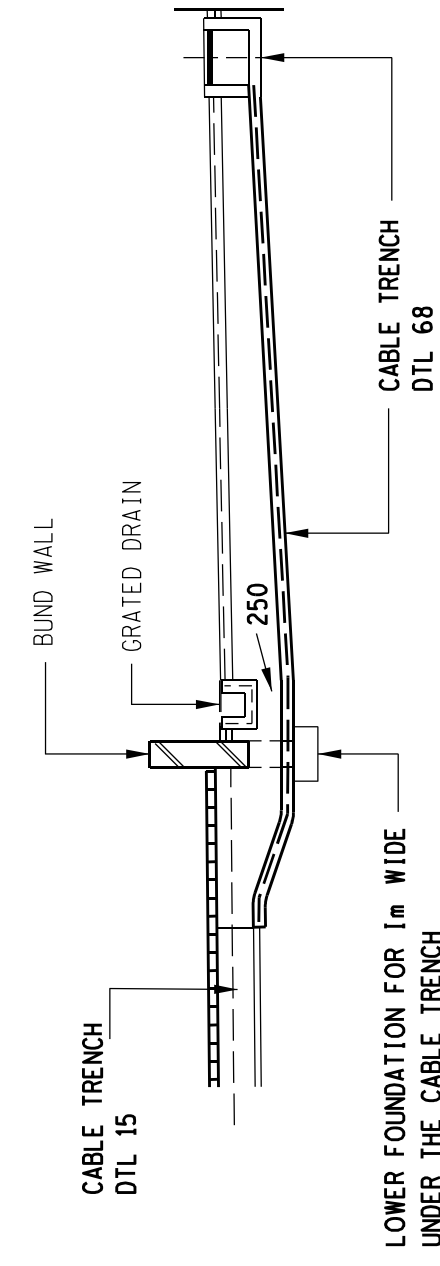


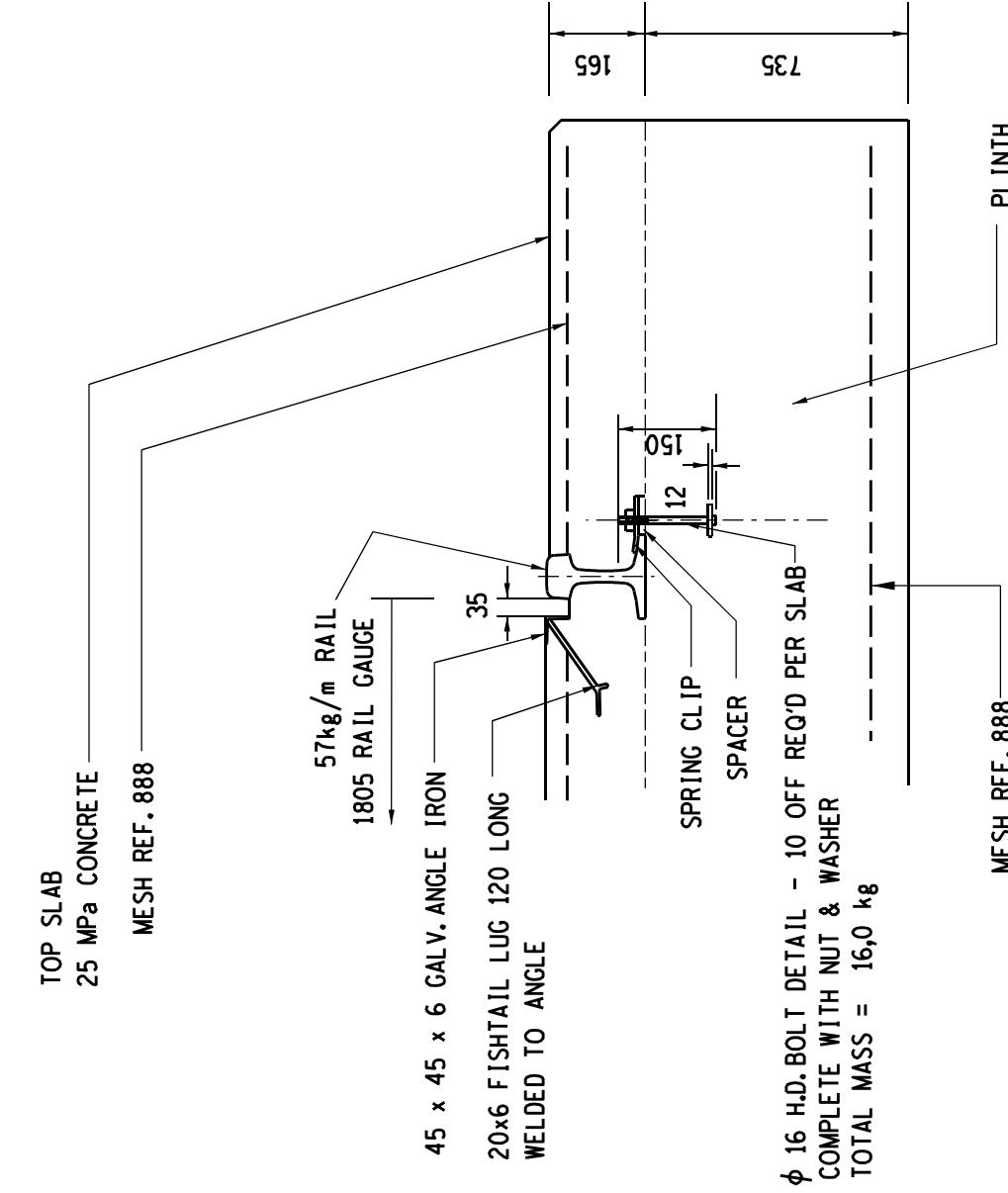
SECTION A-A



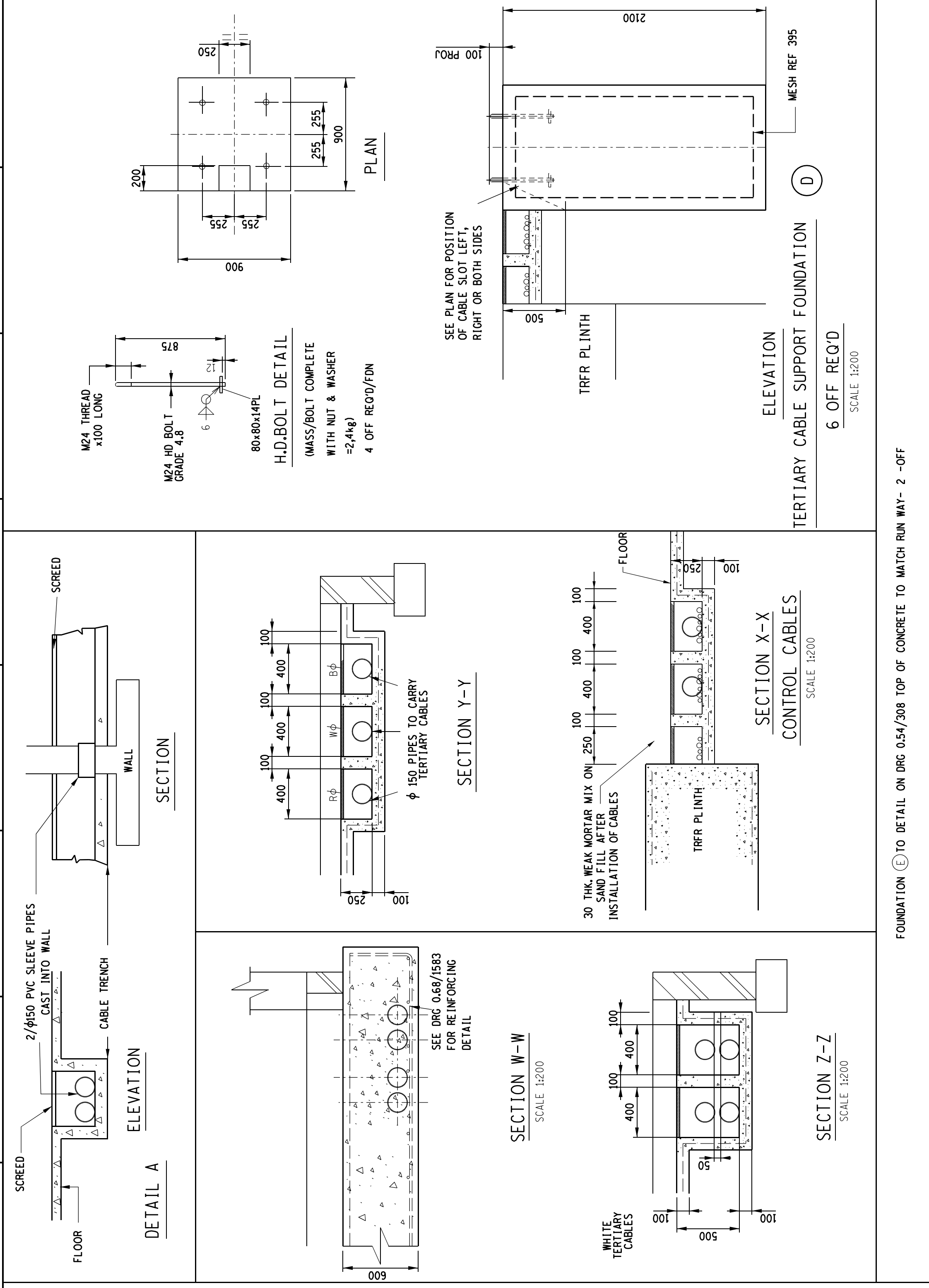
SECTION B-B



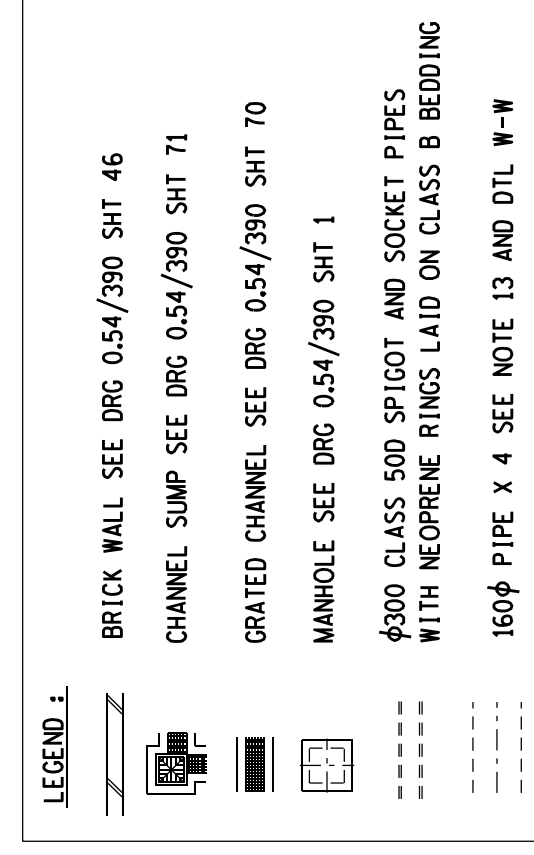
DETAIL B  
CABLE TRENCH UNDER CHANNEL



### PLINTH DETAIL



FOUNDATION (E) TO DETAIL ON DRG 0.54/308 TOP OF CONCRETE TO MATCH RUN WAY- 2 -OFF



NOTES:

1. CONSTRUCTION MUD TO COMPLY WITH S.A.B.S. 1200
2. CONCRETE MIX TO GRADE 25 MPa
3. MINIMUM CONCRETE COVER TO BE INCREMENTED TO 50MM
4. REINFORCEMENT TO BE INCREASED AND/OR DEPTH OF PLINTH TO BE INCREASED AND/OR REINFORCEMENT ADDED IF SITE CONDITIONS REQUIRE
5. ALL TOP EDGES OF CONCRETE ABOVE C.L. TO HAVE 25 mm CHAMFER AT 45°
6. ALL REINFORCING BARS TO BE 16MM AND WASHERS TO BE 16MM THICK
7. ALL REINFORCING BARS TO BE SET WITH 25MM SETTING BED-BOATS
8. 75% TEST TEMPERATURE TO BE USED FOR SETTING BED-BOATS
9. FOR CIVIL CONSTRUCTION DETAILS SEE 0.54/390
10. REINFORCING BARS TO BE USED IN ALL CONCRETE PERIODS
11. REINFORCING BARS TO BE USED IN ALL CONCRETE PERIODS ON BRG 0.54/390 SH-46
12. ALL CONCRETE TO BE CASTED IN ONE LIFT
13. BUILT UP RAFTER TO BE INSTALLED IN STRAIGHT BRICK JOINTS
14. BRICK-AND-FLUTE TO FALL AT A MIN. SLOPE OF 1:50 TOWARDS GROUND OR DRAIN
15. SEE 0.54/390 FOR DETAILS OF RAFTER OR PLINTH POSITION
16. SEE 0.54/390 FOR DETAILS OF RAFTER OR PLINTH POSITION
17. SEE 0.54/390 FOR DETAILS OF RAFTER OR PLINTH POSITION
18. SEE 0.54/390 FOR DETAILS OF RAFTER OR PLINTH POSITION
19. SEE 0.54/390 FOR DETAILS OF RAFTER OR PLINTH POSITION
20. SEE 0.54/390 FOR DETAILS OF RAFTER OR PLINTH POSITION
21. SEE 0.54/390 FOR DETAILS OF RAFTER OR PLINTH POSITION
22. SEE 0.54/390 FOR DETAILS OF RAFTER OR PLINTH POSITION
23. SEE 0.54/390 FOR DETAILS OF RAFTER OR PLINTH POSITION
24. SEE 0.54/390 FOR DETAILS OF RAFTER OR PLINTH POSITION
25. SEE 0.54/390 FOR DETAILS OF RAFTER OR PLINTH POSITION
26. SEE 0.54/390 FOR DETAILS OF RAFTER OR PLINTH POSITION
27. SEE 0.54/390 FOR DETAILS OF RAFTER OR PLINTH POSITION
28. SEE 0.54/390 FOR DETAILS OF RAFTER OR PLINTH POSITION
29. SEE 0.54/390 FOR DETAILS OF RAFTER OR PLINTH POSITION
30. SEE 0.54/390 FOR DETAILS OF RAFTER OR PLINTH POSITION
31. SEE 0.54/390 FOR DETAILS OF RAFTER OR PLINTH POSITION
32. SEE 0.54/390 FOR DETAILS OF RAFTER OR PLINTH POSITION
33. SEE 0.54/390 FOR DETAILS OF RAFTER OR PLINTH POSITION
34. SEE 0.54/390 FOR DETAILS OF RAFTER OR PLINTH POSITION
35. SEE 0.54/390 FOR DETAILS OF RAFTER OR PLINTH POSITION
36. SEE 0.54/390 FOR DETAILS OF RAFTER OR PLINTH POSITION
37. SEE 0.54/390 FOR DETAILS OF RAFTER OR PLINTH POSITION
38. SEE 0.54/390 FOR DETAILS OF RAFTER OR PLINTH POSITION
39. SEE 0.54/390 FOR DETAILS OF RAFTER OR PLINTH POSITION
40. SEE 0.54/390 FOR DETAILS OF RAFTER OR PLINTH POSITION
41. SEE 0.54/390 FOR DETAILS OF RAFTER OR PLINTH POSITION
42. SEE 0.54/390 FOR DETAILS OF RAFTER OR PLINTH POSITION
43. SEE 0.54/390 FOR DETAILS OF RAFTER OR PLINTH POSITION
44. SEE 0.54/390 FOR DETAILS OF RAFTER OR PLINTH POSITION
45. SEE 0.54/390 FOR DETAILS OF RAFTER OR PLINTH POSITION
46. SEE 0.54/390 FOR DETAILS OF RAFTER OR PLINTH POSITION
47. SEE 0.54/390 FOR DETAILS OF RAFTER OR PLINTH POSITION
48. SEE 0.54/390 FOR DETAILS OF RAFTER OR PLINTH POSITION
49. SEE 0.54/390 FOR DETAILS OF RAFTER OR PLINTH POSITION
50. SEE 0.54/390 FOR DETAILS OF RAFTER OR PLINTH POSITION
51. SEE 0.54/390 FOR DETAILS OF RAFTER OR PLINTH POSITION
52. SEE 0.54/390 FOR DETAILS OF RAFTER OR PLINTH POSITION
53. SEE 0.54/390 FOR DETAILS OF RAFTER OR PLINTH POSITION
54. SEE 0.54/390 FOR DETAILS OF RAFTER OR PLINTH POSITION
55. SEE 0.54/390 FOR DETAILS OF RAFTER OR PLINTH POSITION
56. SEE 0.54/390 FOR DETAILS OF RAFTER OR PLINTH POSITION
57. SEE 0.54/390 FOR DETAILS OF RAFTER OR PLINTH POSITION
58. SEE 0.54/390 FOR DETAILS OF RAFTER OR PLINTH POSITION
59. SEE 0.54/390 FOR DETAILS OF RAFTER OR PLINTH POSITION
60. SEE 0.54/390 FOR DETAILS OF RAFTER OR PLINTH POSITION
61. SEE 0.54/390 FOR DETAILS OF RAFTER OR PLINTH POSITION
62. SEE 0.54/390 FOR DETAILS OF RAFTER OR PLINTH POSITION
63. SEE 0.54/390 FOR DETAILS OF RAFTER OR PLINTH POSITION
64. SEE 0.54/390 FOR DETAILS OF RAFTER OR PLINTH POSITION
65. SEE 0.54/390 FOR DETAILS OF RAFTER OR PLINTH POSITION
66. SEE 0.54/390 FOR DETAILS OF RAFTER OR PLINTH POSITION
67. SEE 0.54/390 FOR DETAILS OF RAFTER OR PLINTH POSITION
68. SEE 0.54/390 FOR DETAILS OF RAFTER OR PLINTH POSITION
69. SEE 0.54/390 FOR DETAILS OF RAFTER OR PLINTH POSITION
70. SEE 0.54/390 FOR DETAILS OF RAFTER OR PLINTH POSITION
71. SEE 0.54/390 FOR DETAILS OF RAFTER OR PLINTH POSITION
72. SEE 0.54/390 FOR DETAILS OF RAFTER OR PLINTH POSITION
73. SEE 0.54/390 FOR DETAILS OF RAFTER OR PLINTH POSITION
74. SEE 0.54/390 FOR DETAILS OF RAFTER OR PLINTH POSITION
75. SEE 0.54/390 FOR DETAILS OF RAFTER OR PLINTH POSITION
76. SEE 0.54/390 FOR DETAILS OF RAFTER OR PLINTH POSITION
77. SEE 0.54/390 FOR DETAILS OF RAFTER OR PLINTH POSITION
78. SEE 0.54/390 FOR DETAILS OF RAFTER OR PLINTH POSITION
79. SEE 0.54/390 FOR DETAILS OF RAFTER OR PLINTH POSITION
80. SEE 0.54/390 FOR DETAILS OF RAFTER OR PLINTH POSITION
81. SEE 0.54/390 FOR DETAILS OF RAFTER OR PLINTH POSITION
82. SEE 0.54/390 FOR DETAILS OF RAFTER OR PLINTH POSITION
83. SEE 0.54/390 FOR DETAILS OF RAFTER OR PLINTH POSITION
84. SEE 0.54/390 FOR DETAILS OF RAFTER OR PLINTH POSITION
85. SEE 0.54/390 FOR DETAILS OF RAFTER OR PLINTH POSITION
86. SEE 0.54/390 FOR DETAILS OF RAFTER OR PLINTH POSITION
87. SEE 0.54/390 FOR DETAILS OF RAFTER OR PLINTH POSITION
88. SEE 0.54/390 FOR DETAILS OF RAFTER OR PLINTH POSITION
89. SEE 0.54/390 FOR DETAILS OF RAFTER OR PLINTH POSITION
90. SEE 0.54/390 FOR DETAILS OF RAFTER OR PLINTH POSITION
91. SEE 0.54/390 FOR DETAILS OF RAFTER OR PLINTH POSITION
92. SEE 0.54/390 FOR DETAILS OF RAFTER OR PLINTH POSITION
93. SEE 0.54/390 FOR DETAILS OF RAFTER OR PLINTH POSITION
94. SEE 0.54/390 FOR DETAILS OF RAFTER OR PLINTH POSITION
95. SEE 0.54/390 FOR DETAILS OF RAFTER OR PLINTH POSITION
96. SEE 0.54/390 FOR DETAILS OF RAFTER OR PLINTH POSITION
97. SEE 0.54/390 FOR DETAILS OF RAFTER OR PLINTH POSITION
98. SEE 0.54/390 FOR DETAILS OF RAFTER OR PLINTH POSITION
99. SEE 0.54/390 FOR DETAILS OF RAFTER OR PLINTH POSITION
100. SEE 0.54/390 FOR DETAILS OF RAFTER OR PLINTH POSITION

FDN No	T.L.	T.O.C.	FOUNDING LEVEL
C1	649.83	649.98	648.28
C2	649.83	649.98	648.28
C3	649.83	649.98	648.28
0.54/6490	649.61	650.04	649.14
0.54/6468	649.61	650.04	648.64

[illegible]